

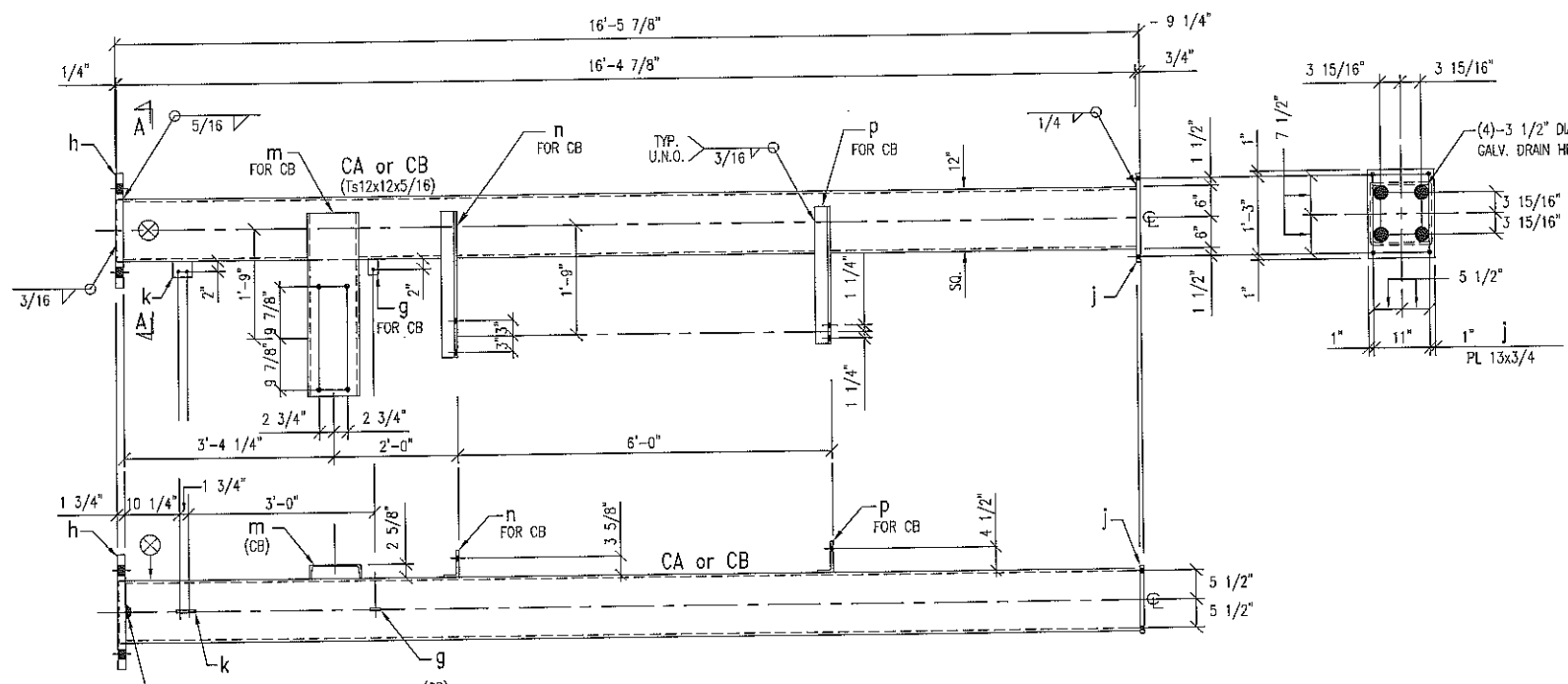
SHIPPING LIST						
NO. PCS.	MATERIAL	LENGTH		MARK	REMARKS	WGT.
		FT.	IN.			
MATERIAL FOR ONE STRUCTURE						
ONE	TRUSS			TA		
2	C 9 X 13.4	17	0	A	9x2.3/8	455.6
8	L 2 1/2 X 2 X 3/16	8	1 5/8	B		179.0
14	L 3 1/2 X 3 X 1/4	0	5	C		31.5
2	Ts 8 X 8 X 3/16	7	8 1/4	BA		301.0
2	PL 13 X 3/4	1	5	d		94.1
8	L 3 X 3 X 1/2	0	7	f		43.9
SHOP WELD INTO						
2-BA						
1,105.9 #						
46-1/4, 18-2, 4-1/4 RF.						

MAKE THIS SHEET - 2 TIMES
SUFFIX ALL PIECE MARKS WITH NUMBER 7
THUS PIECE MARK BA BECOMES BA7

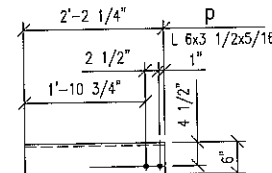
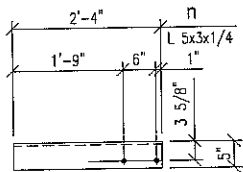
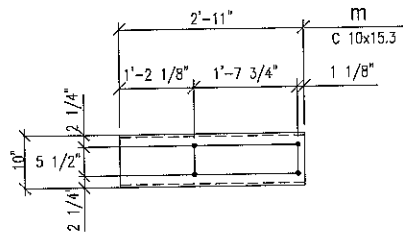
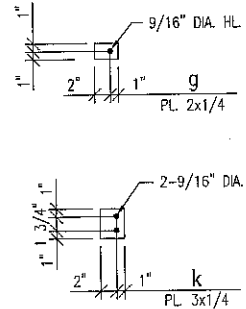
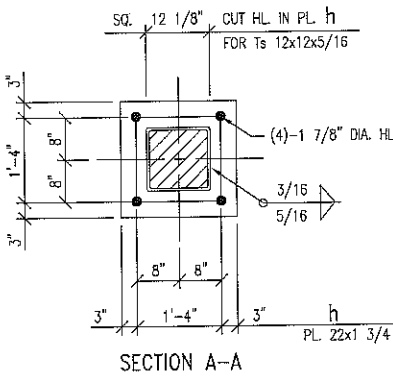
- NOTES:
- ⊗ MARK INDICATES PROPER ORIENTATION OF STRUCTURAL PIECES.
 - ALL ASTM A36 OR A992/A572 GR. 50 STEEL UNLESS NOTED.
ALL TUBING - ASTM A500 GRADE B.
 - ASTM A325 ERECTION BOLTS. USE THE SHORTEST BOLT THAT WILL ALLOW A HARDENED F. WA., A FULL NUT AND A FIELD INSTALLED PALMUT
 - ALL HOT DIP GALVANIZED AFTER FABRICATION (ASTM A123).
 - ALL HOLES 11/16" DIA. FOR 5/8" DIA. BOLTS UNLESS NOTED.
 - MINIMUM EDGE DISTANCE AS NOTED.
 - PIECE MARK STAMPED INTO METAL WITH NOT LESS THAN 3/8" HIGH CHARACTERS BEFORE GALVANIZING.
 - ALL WELDING ELECTRODES SHALL BE E70.

HAMBY YOUNG DWG S12-227-07

REVISION A 3/20/2013 Estim. Block	THE INFORMATION ON THIS DOCUMENT WAS CREATED BY EATON ELECTRICAL. IT WAS DISCLOSED IN CONFIDENCE AND IS ONLY TO BE USED FOR THE PURPOSE IN WHICH IT WAS SUPPLIED.		DATE 3/20/2013	Eaton Electrical Services & Systems	
	CAD FILENAME M-0001	PRODUCT CODE X	REVISION A	DATE 3/20/2013	TITLE THIRD TAXING DISTRICT FITCH STREET STATION
SCALE NONE			TYPE 138 KV 3-Ph High Switch Stand Item 107-Steel Details		Mechanical
G.O. EMP00441			DWG S-50-006		SHEET 1 OF 1



COL. CA } AS NOTED
COL. CB }



SHIPPING LIST

NO. PCS.	MATERIAL	LENGTH		MARK	REMARKS	WGT.
		FT.	IN.			
SHIP KNOCKED DOWN						
MATERIAL FOR ONE STRUCTURE						
ONE	COL.			CA		
1	Ts 12 X 12 X 5/16	16	4 7/8	CA		801.6
1	PL 22 X 1 3/4	1	10	h		240.0
1	PL 13 X 3/4	1	5	j		47.0
1	PL 3 X 1/4	0	3 3/4	k		0.8
	SHOP WELD					1,088.4 #
SHOP ASSEMBLE						
ONE	COL.			CB		
1	Ts 12 X 12 X 5/16	16	4 7/8	CB		801.6
1	PL 2 X 1/4	0	3	g		0.4
1	PL 22 X 1 3/4	1	10	h		240.0
1	PL 13 X 3/4	1	5	i		47.0
1	PL 3 X 1/4	0	3 3/4	k		0.8
1	C 10 X 15.3	2	11	m	10x2 5/8	44.6
1	L 5 X 3 X 1/4	2	4	n		15.4
1	L 6 X 3 1/2 X 5/16	2	2 1/4	p		21.4
	SHOP WELD					1,171.2 #
						2,292.4 #
BOLTS						
FIELD	SHOP					
-	46	5/8\"		A325		16.2
-	16	5/8\"		A325		6.0
9	-	5/8\"		A325		4.0
9	62	5/8\"		A563 DH		
-	4	5/8\"		1/4\"	THK.	0.3
9	62	5/8\"		1/8\"	THK.	2.6
75	-	5/8\"				2.7
						31.8 #
TOTAL BLK. WGT. = 3,300.3 #						
GALV. WGT. = 3,517.2 #						

MAKE THIS SHEET - 2 TIMES

SUFFIX ALL PIECE MARKS WITH NUMBER 8
THUS PIECE MARK CA BECOMES CA8

NOTES:

- ⊗ MARK INDICATES PROPER ORIENTATION OF STRUCTURAL PIECES.
- ALL ASTM A36 OR A992/A572 GR. 50 STEEL UNLESS NOTED. ALL TUBING - ASTM A500 GRADE B.
- ASTM A325 ERECTION BOLTS. USE THE SHORTEST BOLT THAT WILL ALLOW A HARDENED F. WA., A FULL NUT AND A FIELD INSTALLED PALNUT
- ALL HOT DIP GALVANIZED AFTER FABRICATION (ASTM A123).
- ALL HOLES 1 1/16\"
- MINIMUM EDGE DISTANCE AS NOTED.
- PIECE MARK STAMPED INTO METAL WITH NOT LESS THAN 3/8\"

HAMBY YOUNG DWG S12-227-08

THE INFORMATION ON THIS DOCUMENT WAS CREATED BY EATON ELECTRICAL. IT WAS DISCLOSED IN CONFIDENCE AND IS ONLY TO BE USED FOR THE PURPOSE IN WHICH IT WAS SUPPLIED.

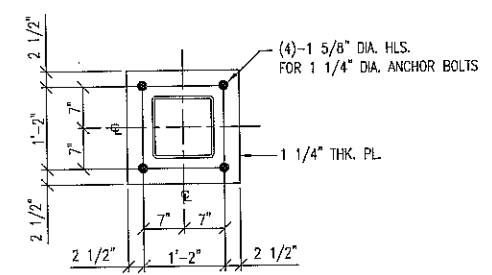
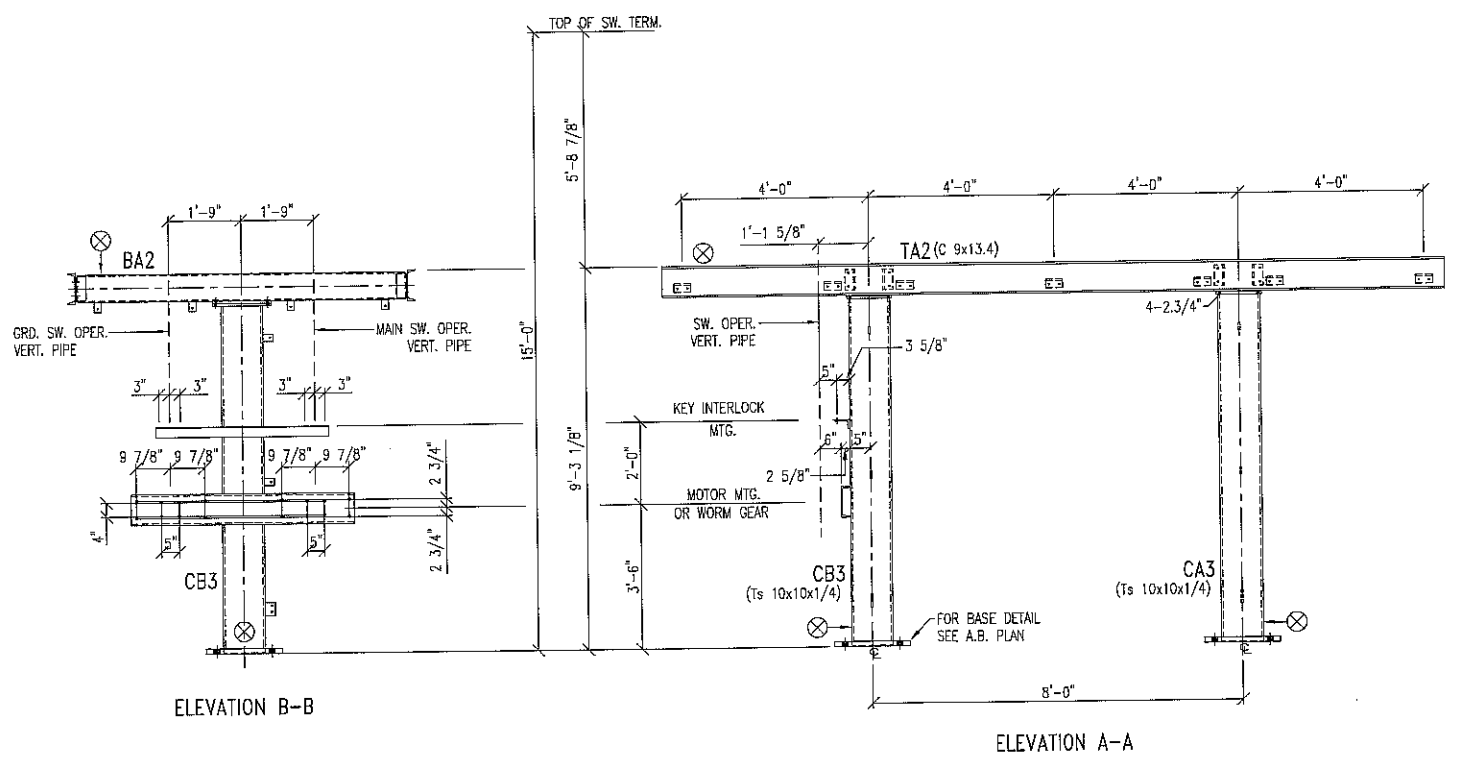
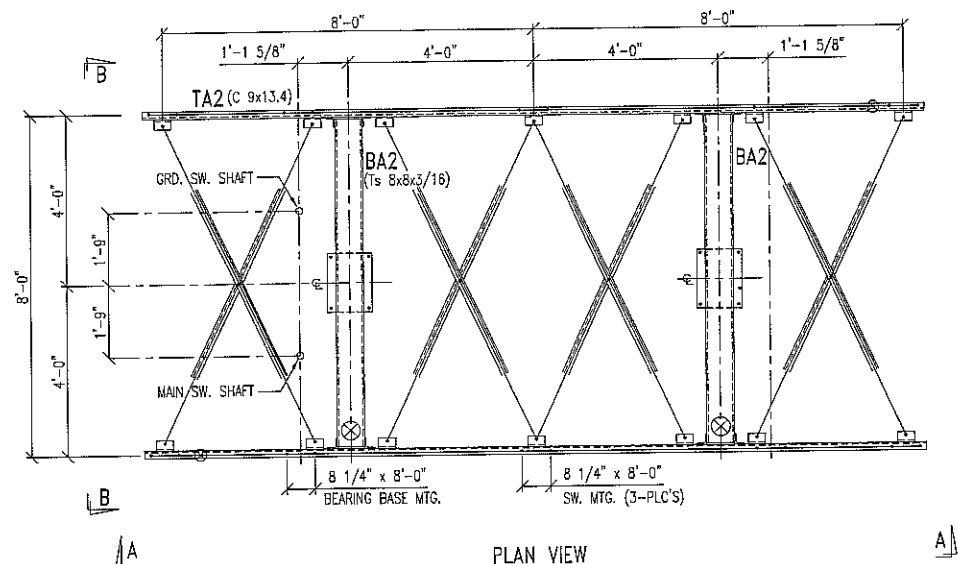
DFTR	DATE
CBE	3/20/2013
ENGR	DATE
CBE	3/20/2013
SCALE	NONE

Eaton | Electrical Services & Systems

TITLE THIRD TAXING DISTRICT
FITCH STREET STATION

TYPE 138kV 3-Ph High Switch Stand Item 107-Steel Details
Structural

CAD FILENAME	PRODUCT CODE	REVISION	G.O.	DWG	SHEET
M-0001	X	A	EMP00441	S-50-007	1 OF 1



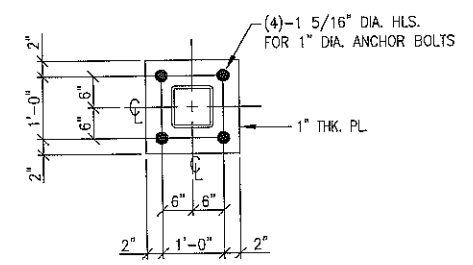
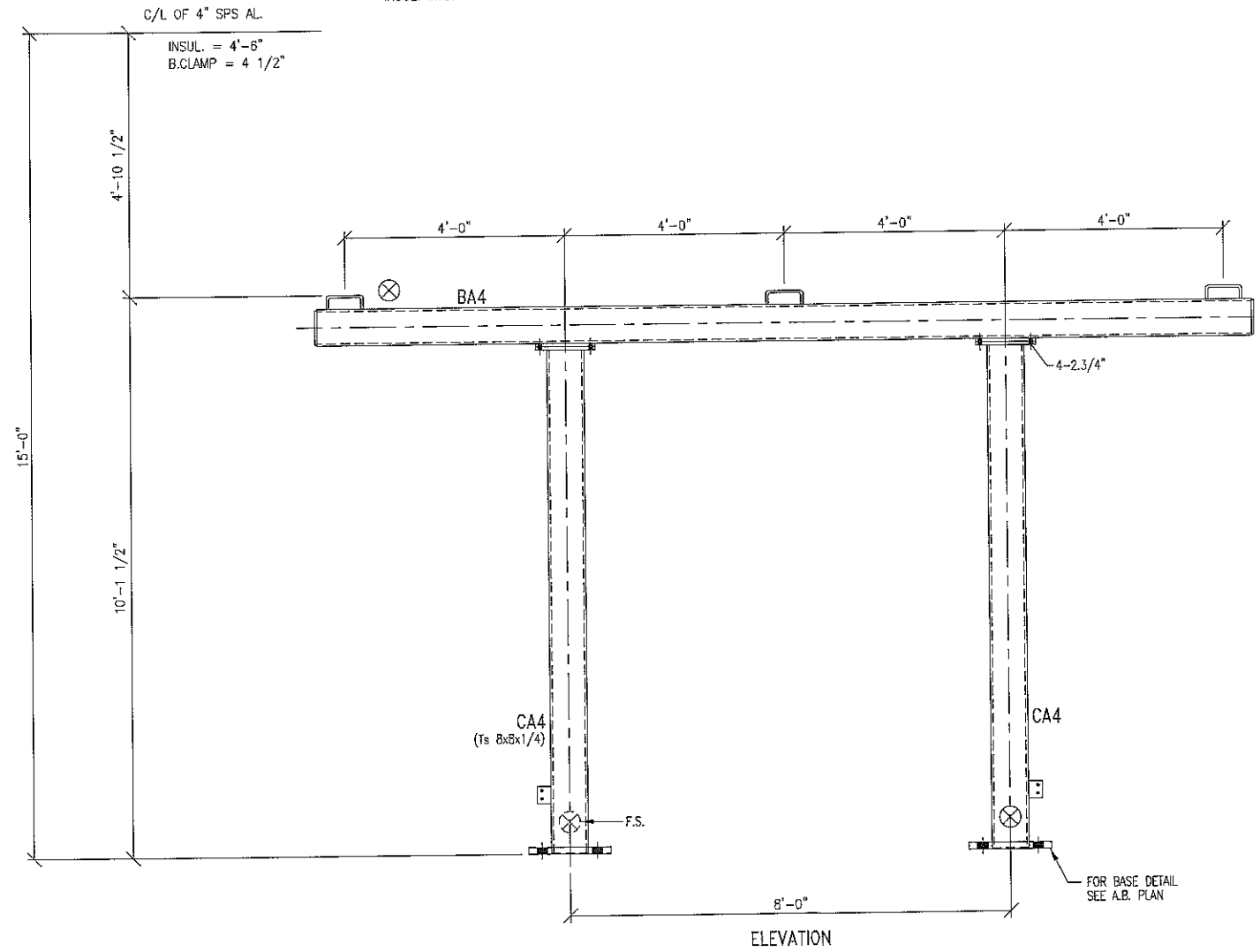
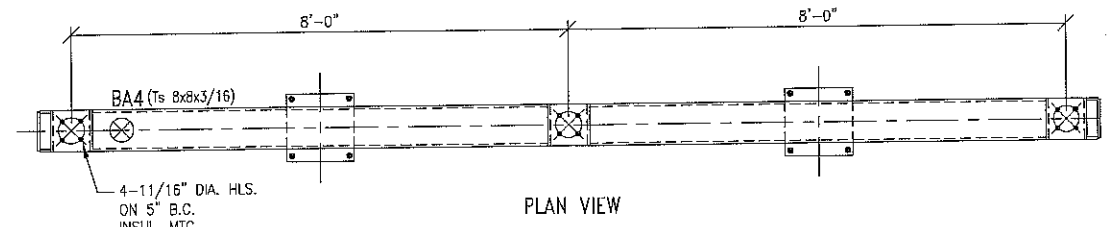
FIELD : INSTALL ALL PALNUTS

MAKE THIS SHEET - 2 TIMES
SEE DWG. NO. S12-227-02 & 03
STEEL DETAILS & SHIPPING LIST

- NOTES:
- ⊗ MARK INDICATES PROPER ORIENTATION OF STRUCTURAL PIECES.
 - ALL ASTM A36 OR A992/A572 GR. 50 STEEL UNLESS NOTED. ALL TUBING - ASTM A500 GRADE B.
 - ASTM A325 ERECTION BOLTS. USE THE SHORTEST BOLT THAT WILL ALLOW A HARDENED F. WA., A FULL NUT AND A FIELD INSTALLED PALNUT.
 - ALL HOT DIP GALVANIZED AFTER FABRICATION (ASTM A123).
 - ALL HOLES 11/16" DIA. FOR 5/8" DIA. BOLTS UNLESS NOTED.
 - MINIMUM EDGE DISTANCE AS NOTED.
 - PIECE MARK STAMPED INTO METAL WITH NOT LESS THAN 3/8" HIGH CHARACTERS BEFORE GALVANIZING.
 - ALL WELDING ELECTRODES SHALL BE E70.

HAMBY YOUNG DWG. S12-227-E1

REVISION A 3/20/2013 Eaton Black	THE INFORMATION ON THIS DOCUMENT WAS CREATED BY EATON ELECTRICAL. IT WAS DISCLOSED IN CONFIDENCE AND IS ONLY TO BE USED FOR THE PURPOSE IN WHICH IT WAS SUPPLIED.		DFTR CBE	DATE 3/20/2013	Eaton Electrical Services & Systems	
			ENGR CBE	DATE 3/20/2013	TITLE THIRD TAXING DISTRICT FITCH STREET STATION	
			SCALE NONE	TYPE 138 KV 3-Ph Low Switch Stand Item 103-Erection		Structural
			CAD FILENAME	PRODUCT CODE X	REVISION A	G.O. EMPO0441
					DWG S-50-008	SHEET 1 OF 1



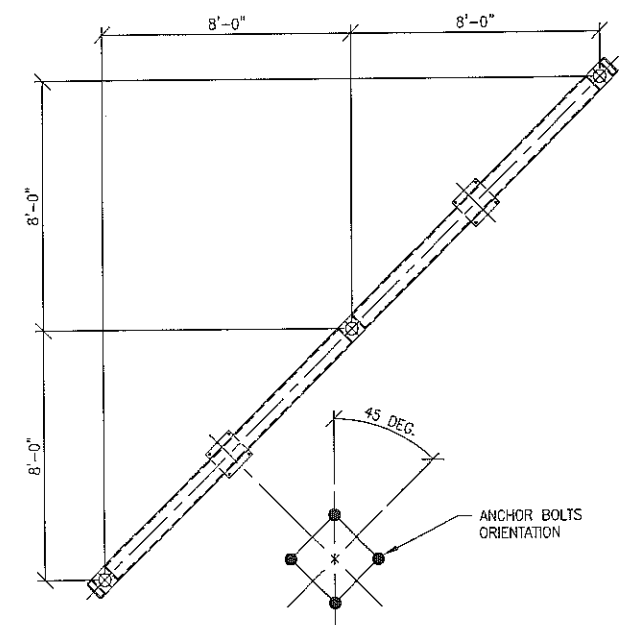
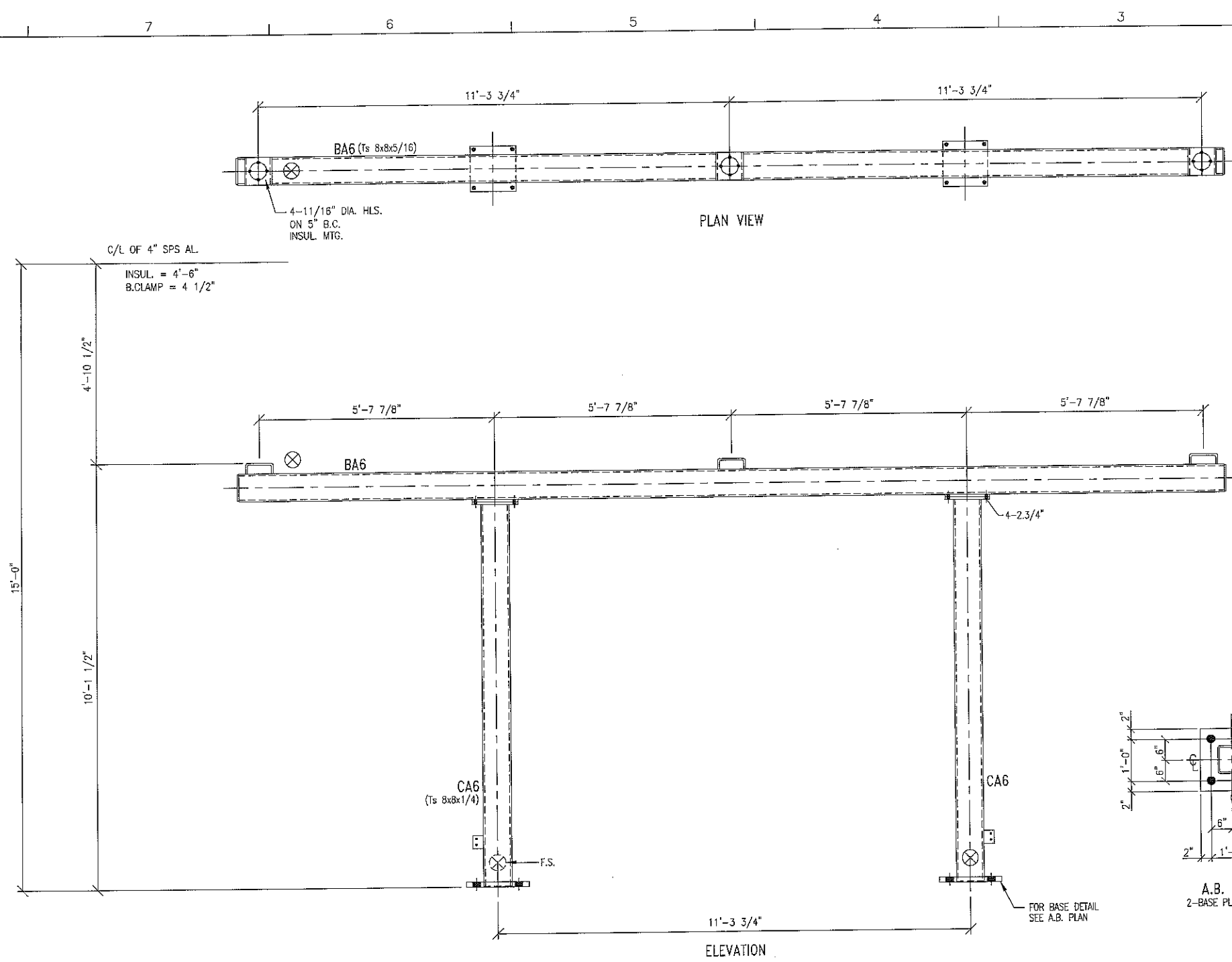
MAKE THIS SHEET - 4 TIMES
SEE DWG. S12-227-04
FOR STEEL DETAILS & SHIPPING LIST

- NOTES:
- ⊗ MARK INDICATES PROPER ORIENTATION OF STRUCTURAL PIECES.
 - ALL ASTM A36 OR A992/A572 GR. 50 STEEL UNLESS NOTED. ALL TUBING - ASTM A500 GRADE B.
 - ASTM A325 ERECTION BOLTS. USE THE SHORTEST BOLT THAT WILL ALLOW A HARDENED F. WA., A FULL NUT AND A FIELD INSTALLED PALNUT
 - ALL HOT DIP GALVANIZED AFTER FABRICATION (ASTM A123).
 - ALL HOLES 11/16" DIA. FOR 5/8" DIA. BOLTS UNLESS NOTED.
 - MINIMUM EDGE DISTANCE AS NOTED.
 - PIECE MARK STAMPED INTO METAL WITH NOT LESS THAN 3/8" HIGH CHARACTERS BEFORE GALVANIZING.
 - ALL WELDING ELECTRODES SHALL BE E70.

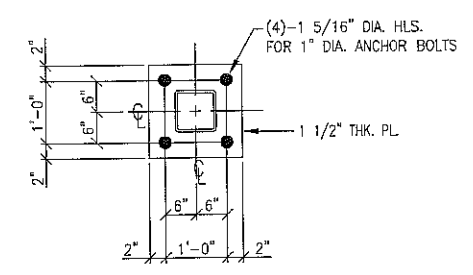
HAMBY YOUNG DWG S12-227-E2

REVISION	Eaton Black
A	3/20/2013

THE INFORMATION ON THIS DOCUMENT WAS CREATED BY EATON ELECTRICAL. IT WAS DISCLOSED IN CONFIDENCE AND IS ONLY TO BE USED FOR THE PURPOSE IN WHICH IT WAS SUPPLIED.		DFTR CBE	DATE 3/20/2013	EATON Electrical Services & Systems
		ENGR CBE	DATE 3/20/2013	
		SCALE	NONE	TITLE THIRD TAXING DISTRICT FITCH STREET STATION
				TYPE 138 KV 3-Ph Low Bus Support Stand Item 104 - Erection
CAD FILENAME M-0001	PRODUCT CODE X	REVISION A	G.O. EMP00441	DWG S-50-009
				SHEET 1 OF 1



NOTE : STRUCTURE IS AT A 45 DEG. ORIENTATION



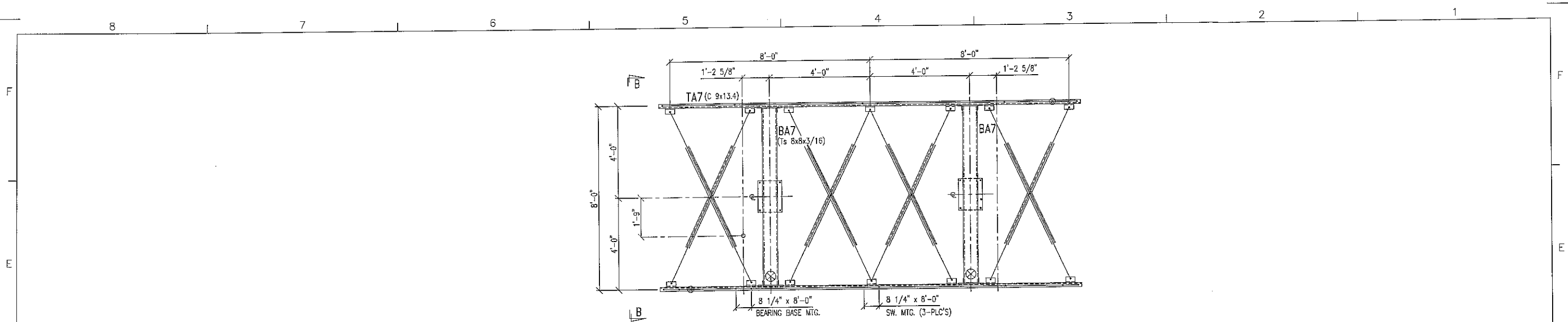
A.B. PLAN
2-BASE PLATES THUS

MAKE THIS SHEET - 2 TIMES
SEE DWG. S12-227-06
FOR STEEL DETAILS & SHIPPING LIST

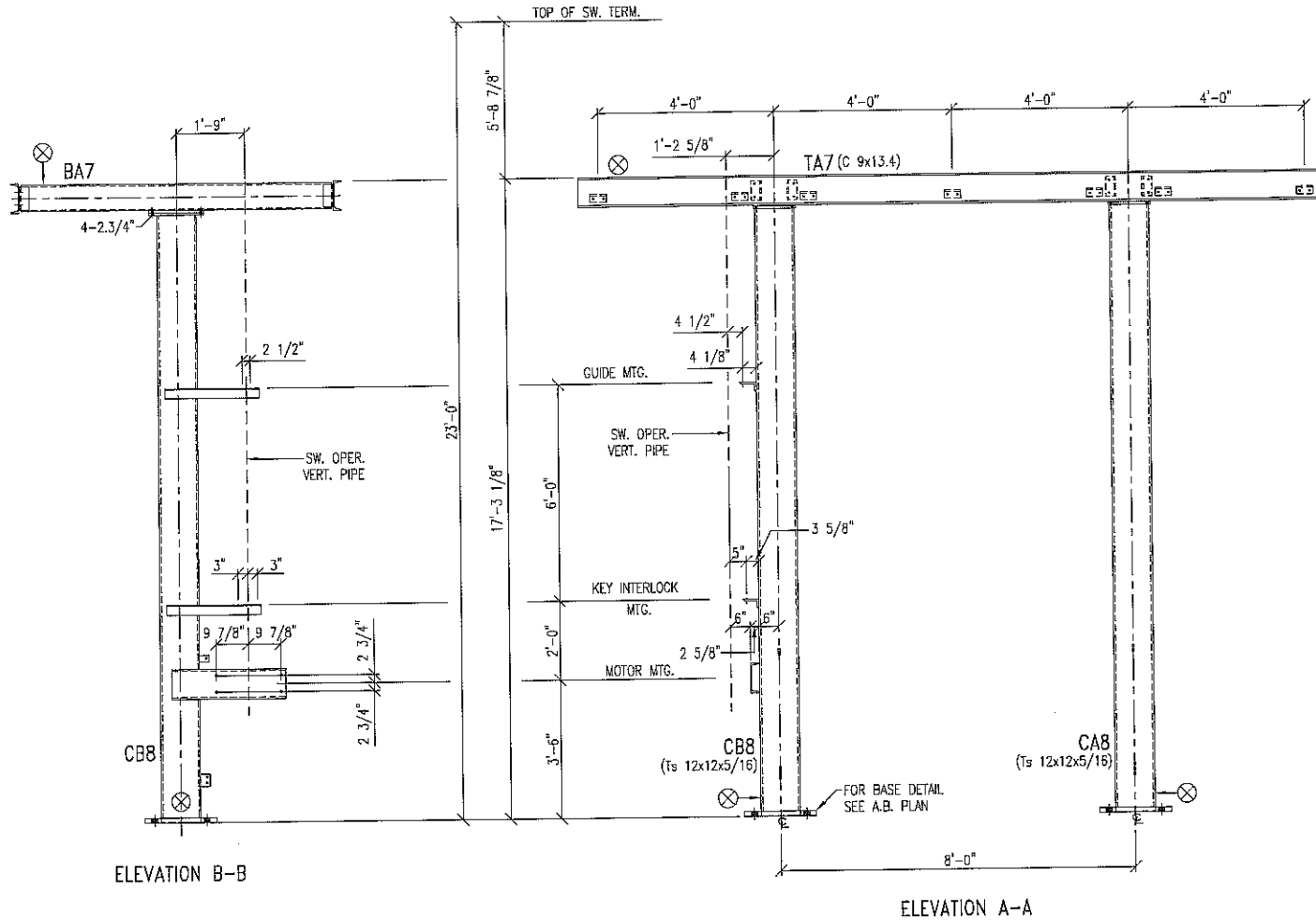
- NOTES:
- ⊗ MARK INDICATES PROPER ORIENTATION OF STRUCTURAL PIECES.
 - ALL ASTM A36 OR A992/A572 GR. 50 STEEL UNLESS NOTED.
ALL TUBING - ASTM A500 GRADE B.
 - ASTM A325 ERECTION BOLTS. USE THE SHORTEST BOLT THAT WILL ALLOW A HARDENED F. WA., A FULL NUT AND A FIELD INSTALLED PALNUT
 - ALL HOT DIP GALVANIZED AFTER FABRICATION (ASTM A123).
 - ALL HOLES 11/16" DIA. FOR 5/8" DIA. BOLTS UNLESS NOTED.
 - MINIMUM EDGE DISTANCE AS NOTED.
 - PIECE MARK STAMPED INTO METAL WITH NOT LESS THAN 3/8" HIGH CHARACTERS BEFORE GALVANIZING.
 - ALL WELDING ELECTRODES SHALL BE E70.

HAMBY YOUNG DWG S12-227-E4

A	REVISION	DATE	Eaton Electrical Services & Systems
	A 9/4/2012 PRELIMINARY	3/20/2013	
B 12/19/12 Remove Line C'S		3/20/2013	TITLE
			THIRD TAXING DISTRICT FITCH STREET STATION
			TYPE
			138 kV 3-Ph Bus Support Stand - Item 106 - Erection
			Structural
			G.O.
			EMP00441
			DWG
			S-50-010
			SHEET
			1 OF 1

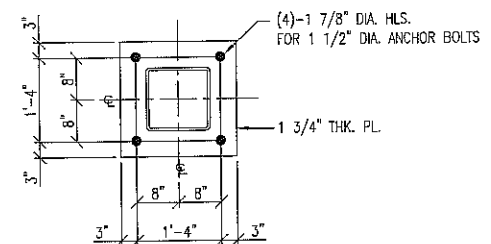


PLAN VIEW



ELEVATION B-B

ELEVATION A-A



FIELD : INSTALL ALL PALNUTS

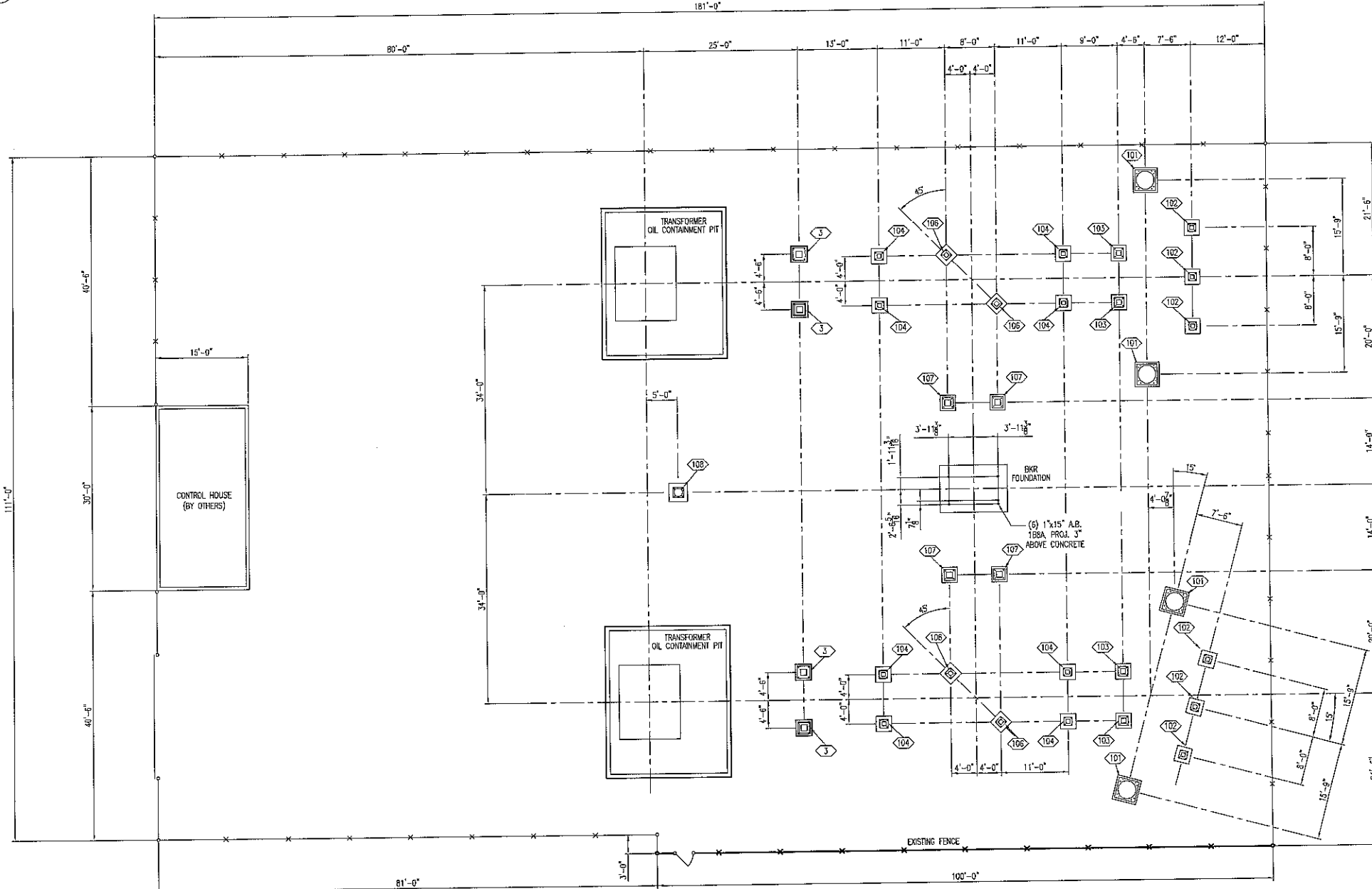
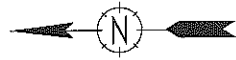
MAKE THIS SHEET - 2 TIMES
SEE DWG. NO. S12-227-07 & 08
STEEL DETAILS & SHIPPING LIST

- NOTES:
- ⊗ MARK INDICATES PROPER ORIENTATION OF STRUCTURAL PIECES.
 - ALL ASTM A36 OR A992/A572 GR. 50 STEEL UNLESS NOTED.
 - ALL TUBING - ASTM A500 GRADE B.
 - ASTM A325 ERECTION BOLTS. USE THE SHORTEST BOLT THAT WILL ALLOW A HARDENED F. WA., A FULL NUT AND A FIELD INSTALLED PALNUT.
 - ALL HOT DIP GALVANIZED AFTER FABRICATION (ASTM A123).
 - ALL HOLES 1 1/16" DIA. FOR 5/8" DIA. BOLTS UNLESS NOTED.
 - MINIMUM EDGE DISTANCE AS NOTED.
 - PIECE MARK STAMPED INTO METAL WITH NOT LESS THAN 3/8" HIGH CHARACTERS BEFORE GALVANIZING.
 - ALL WELDING ELECTRODES SHALL BE E70.

HAMBY YOUNG DWG S12-227-E5

REVISION	Blank
A	3/20/2013

THE INFORMATION ON THIS DOCUMENT WAS CREATED BY EATON ELECTRICAL. IT WAS DISCLOSED IN CONFIDENCE AND IS ONLY TO BE USED FOR THE PURPOSE IN WHICH IT WAS SUPPLIED.		DFTR CBE	DATE 3/20/2013	EATON Electrical Services & Systems
		ENGR CBE	DATE 3/20/2013	
		SCALE	NONE	TITLE THIRD TAXING DISTRICT FITCH STREET STATION
				TYPE 138 kV 3-Ph High Switch Stand-Item 107-Erection
CAD FILENAME	PRODUCT CODE	REVISION	G.O.	Structural
M-0001	X	A	EMP00441	DWG S-50-011
				SHEET 1 OF 1



ANCHOR BOLT PLAN VIEW
 0' 5' 10' 20'
 SCALE: 1" = 10'-0"

Hamby-Young Dwg: S12-227-AB1

REFERENCE DRAWINGS
 S12-227-AB2 (ANCHOR BOLT AND BASE PLATE DETAILS)

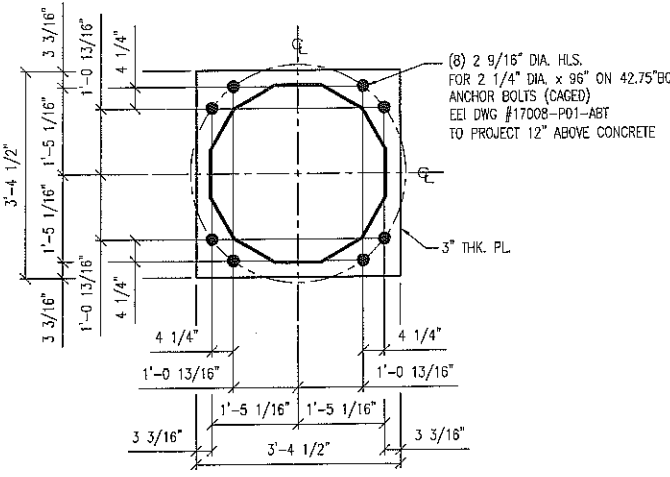
A	REVISION	DATE	DRAWN BY	CHECKED BY	DATE	EATON Electrical Services & Systems	TITLE	TYPE	CIVIL
	A								
CAD FILENAME		PRODUCT CODE	REVISION	G.O.	DWG	SHEET			
M-0001		X	A	EMP00441	C-22-001	1 OF 1			

THE INFORMATION ON THIS DOCUMENT WAS CREATED BY EATON ELECTRICAL. IT WAS DISCLOSED IN CONFIDENCE AND IS ONLY TO BE USED FOR THE PURPOSE IN WHICH IT WAS SUPPLIED.

MAXIMUM FOUNDATION REACTIONS PER BASE

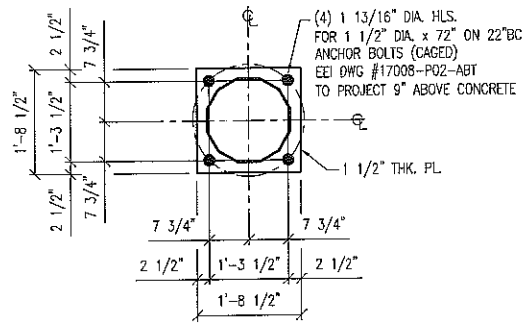
DESCRIPTION	DIRECT LOAD	MOMENT	SHEAR
	Py KIPS	M KIP-FT	V KIPS
BASE - 102			
MAXIMUM	1.25	4.11	0.61
OR	0.93		
BASE - 103			
MAXIMUM	4.42	23.97	2.99
OR	1.07		
BASE - 104			
MAXIMUM	2.16	8.18	1.03
OR	-0.14		
BASE - 105			
MAXIMUM	2.43	12.30	1.29
OR	1.79		
BASE - 106			
MAXIMUM	2.95	22.77	1.88
OR	-0.37		
BASE - 107			
MAXIMUM	5.34	50.07	3.61
OR	1.57		

(SEE CALCULATIONS FOR COMPLETE LOADINGS)



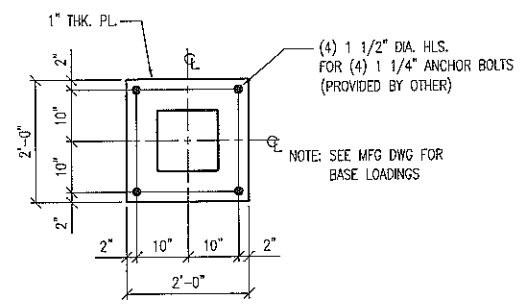
BASE 101 (4-REQ'D)

138KV, TAPERED TUBULAR H-FRAME DEAD END STRUCTURE
SEE EEL 17008-P01-H46 CALCULATIONS FOR COMPLETE BASE LOADINGS



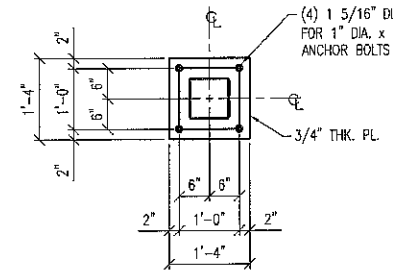
BASE 108 (1-REQ'D)

50 FT STATIC MAST STRUCTURE
SEE EEL 17008-P02-50 CALCULATIONS FOR COMPLETE BASE LOADINGS



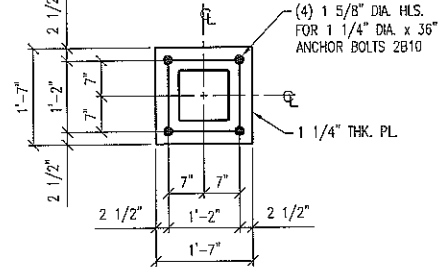
BASE 3 (4-REQ'D)

138KV CIRCUIT SWITCHER (8'-0" PEDESTAL HT.)
(PROVIDED BY OTHER)



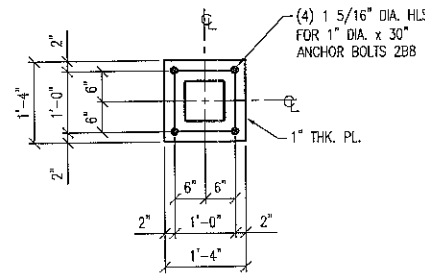
BASE 102 (6-REQ'D)

138KV, 1-PH, 1-COL, CVT STAND (8'-0" STAND HT.)



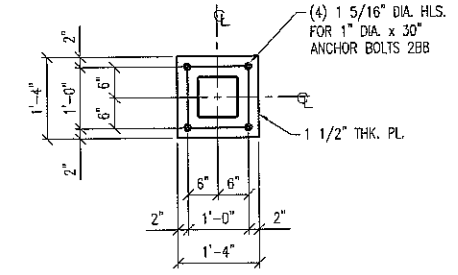
BASE 103 (4-REQ'D)

138KV, 3-PH, 2-COL, SWITCH/GROUND STAND (15'-0" BUS EL.)



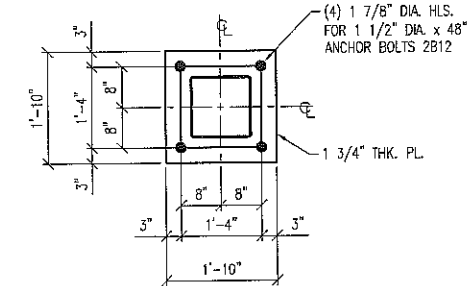
BASE 104 (8-REQ'D)

138KV, 3-PH, 2-COL, LOW BUS SUPPORT (15'-0" BUS EL.)



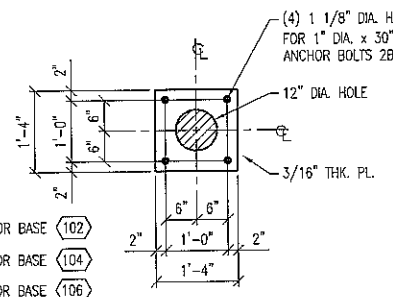
BASE 106 (4-REQ'D)

138KV, 3-PH, 2-COL, BI-LEVEL BUS SUPPORT, 45 DEG (15'-0" BUS EL.)



BASE 107 (4-REQ'D)

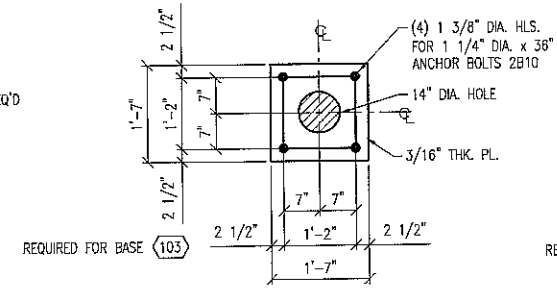
138KV, 3-PH, 2-COL, HIGH SWITCH STAND (23'-0" BUS EL.)



TEMPLATE TP1 (4) REQ'D

PL-3/16" X 16" X 1'-4"

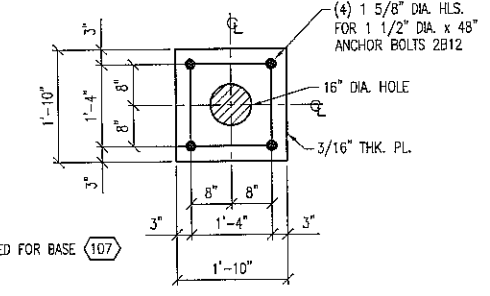
REQUIRED FOR BASE 102
REQUIRED FOR BASE 104
REQUIRED FOR BASE 106
BLACK WEIGHT EA: 13.6#
BLACK WEIGHT TOTAL: 54.4#



TEMPLATE TP2 (2) REQ'D

PL-3/16" X 19" X 1'-7"

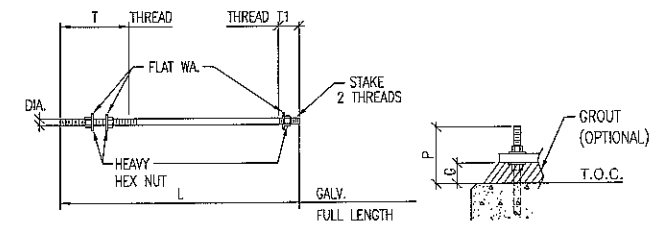
REQUIRED FOR BASE 103
BLACK WEIGHT EA: 19.2#
BLACK WEIGHT TOTAL: 38.4#



TEMPLATE TP3 (2) REQ'D

PL-3/16" X 22" X 1'-10"

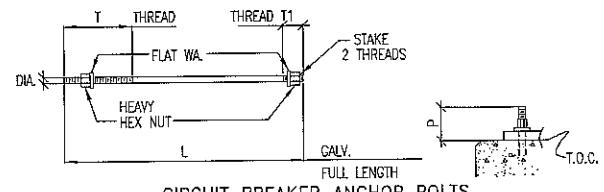
REQUIRED FOR BASE 107
BLACK WEIGHT EA: 25.7#
BLACK WEIGHT TOTAL: 51.5#



ANCHOR BOLTS (HEADED)

ASTM F1554-36 ANCHOR BOLTS WITH ASTM A563 HEAVY HEX NUTS

QNTY	MARK	DIA.	X	L	T1	T	P	G	WT.EA.
-	2B6	3/4"	DIA.X	24"	1 1/2"	5 1/2"	4 1/2"	2"	3.78#
72	2B8	1"	DIA.X	30"	2"	6"	5"	2"	8.20#
16	2B10	1 1/4"	DIA.X	36"	2 1/2"	6 1/2"	5 1/2"	2"	15.30#
16	2B12	1 1/2"	DIA.X	48"	2 1/2"	7 1/2"	6 1/2"	2"	29.60#
-	2B14	1 3/4"	DIA.X	54"	3"	9 1/2"	8 1/2"	3"	45.31#
-	2B16	2"	DIA.X	60"	3"	10"	9"	3"	65.73#
									TOTAL = 1308.8#



CIRCUIT BREAKER ANCHOR BOLTS

ASTM F1554-36 ANCHOR BOLTS WITH ASTM A563 HEAVY HEX NUTS

QTY	MARK	DIA.	X	L	T1	T	P	WT.EA.
6	1B8A	1"	DIA X	15"	1 1/2"	3 1/2"	3"	4.52#
								TOTAL WGT 27.12 #

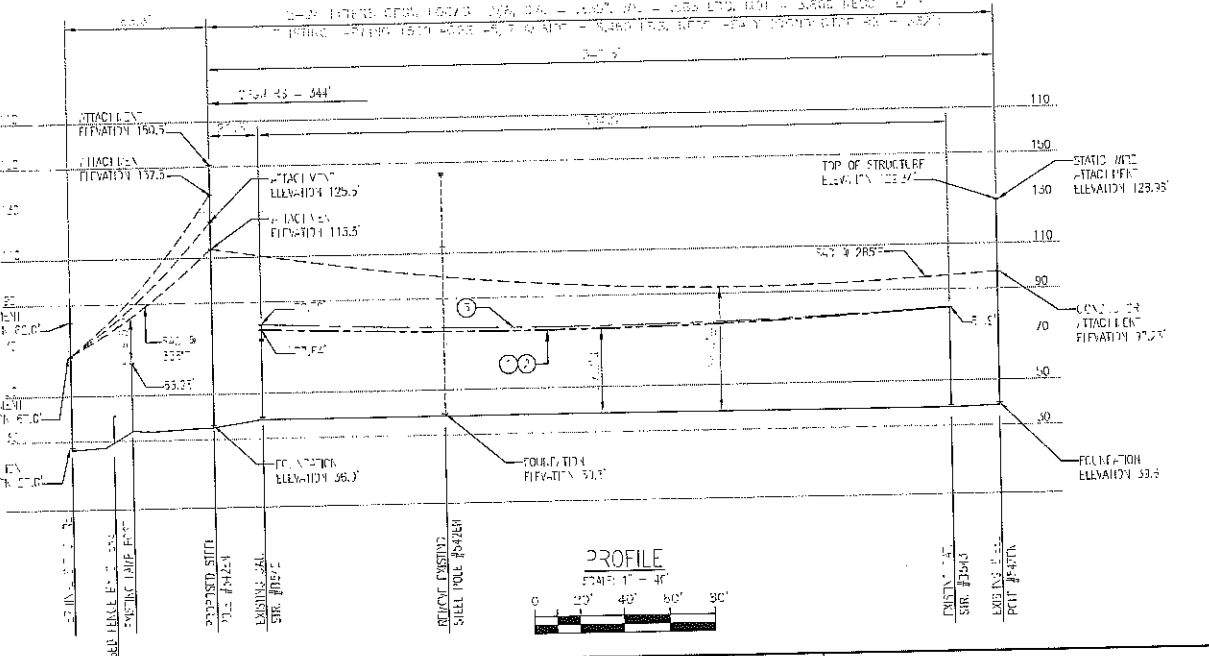
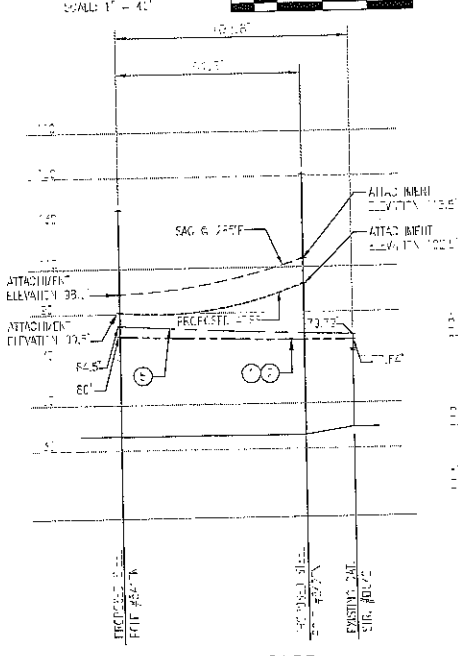
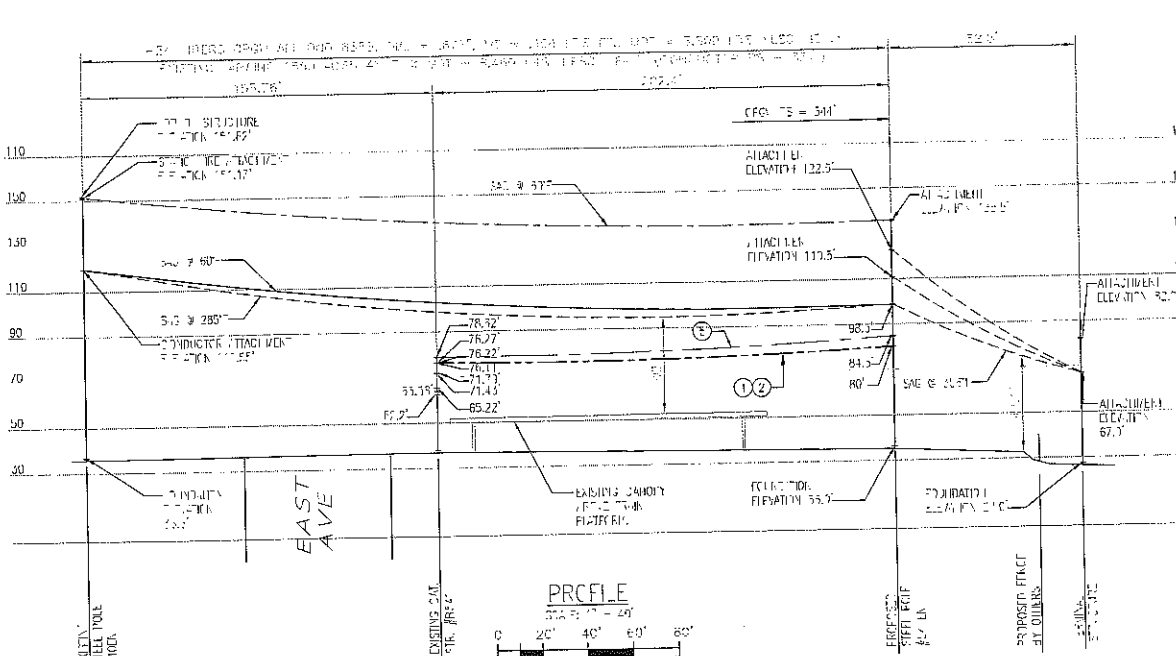
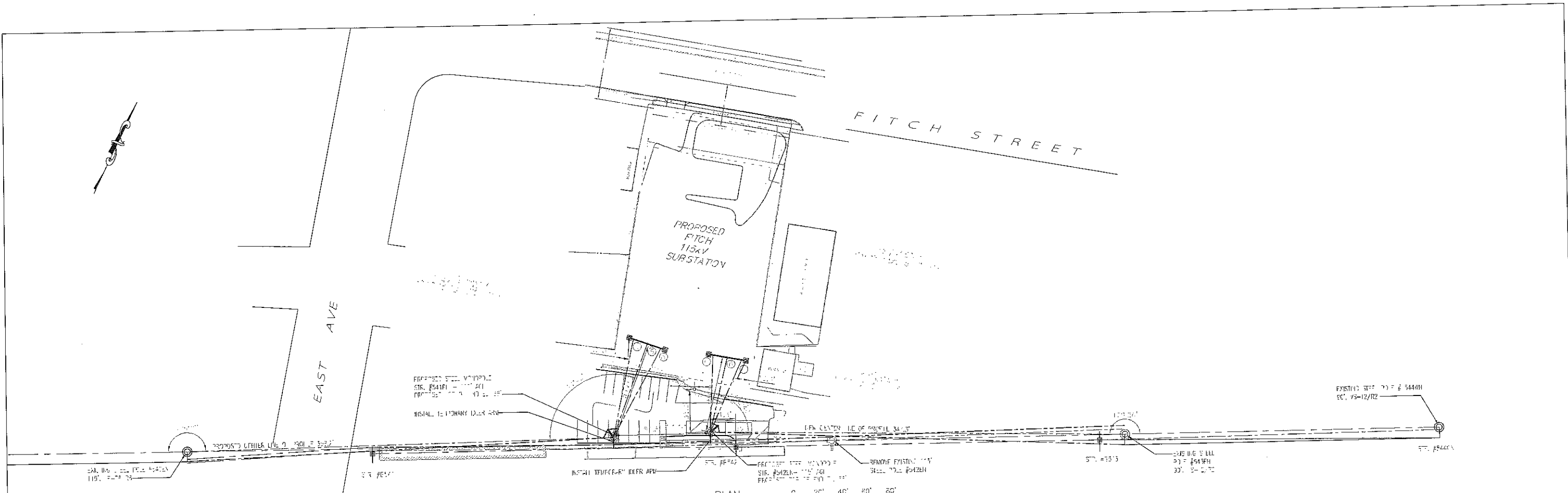
Hamby-Young Dwg: S12-227-AB2

<p>REVISION</p> <p>A 3/21/2013 ELM/BLK</p>	<p>DATE 3/20/2013</p>		<p>DFTR CB/E</p>		<p>DATE 3/20/2013</p>		<p>ENGR CB/E</p>		<p>DATE 3/20/2013</p>		<p>SCALE NONE</p>		<p>TYPE Anchor Bolt Details & Base Plate Details</p>		<p>Civil</p>	
	<p>CAD FILENAME X</p>		<p>PRODUCT CODE X</p>		<p>REVISION A</p>		<p>G.O. EMP00441</p>		<p>DWG C-22-002</p>		<p>SHEET 1 OF 1</p>		<p>REFERENCE DRAWINGS S12-227-AB1 (ANCHOR BOLT PLAN)</p>			
	<p>THE INFORMATION ON THIS DOCUMENT WAS CREATED BY EATON ELECTRICAL. IT WAS DISCLOSED IN CONFIDENCE AND IS ONLY TO BE USED FOR THE PURPOSE IN WHICH IT WAS SUPPLIED.</p>															
	<p>Eaton Electrical Services & Systems</p>															

APPENDIX C

TRANSMISSION LINE DRAWINGS

02/27/2013 10:52 AM - PROJECT: C:\Users\jtravis\Documents\Projects\NUSCO\Projects\FITC\FITC151\Fitc_Sub_Nusco.dwg - PLOT: 02/27/2013 10:52 AM



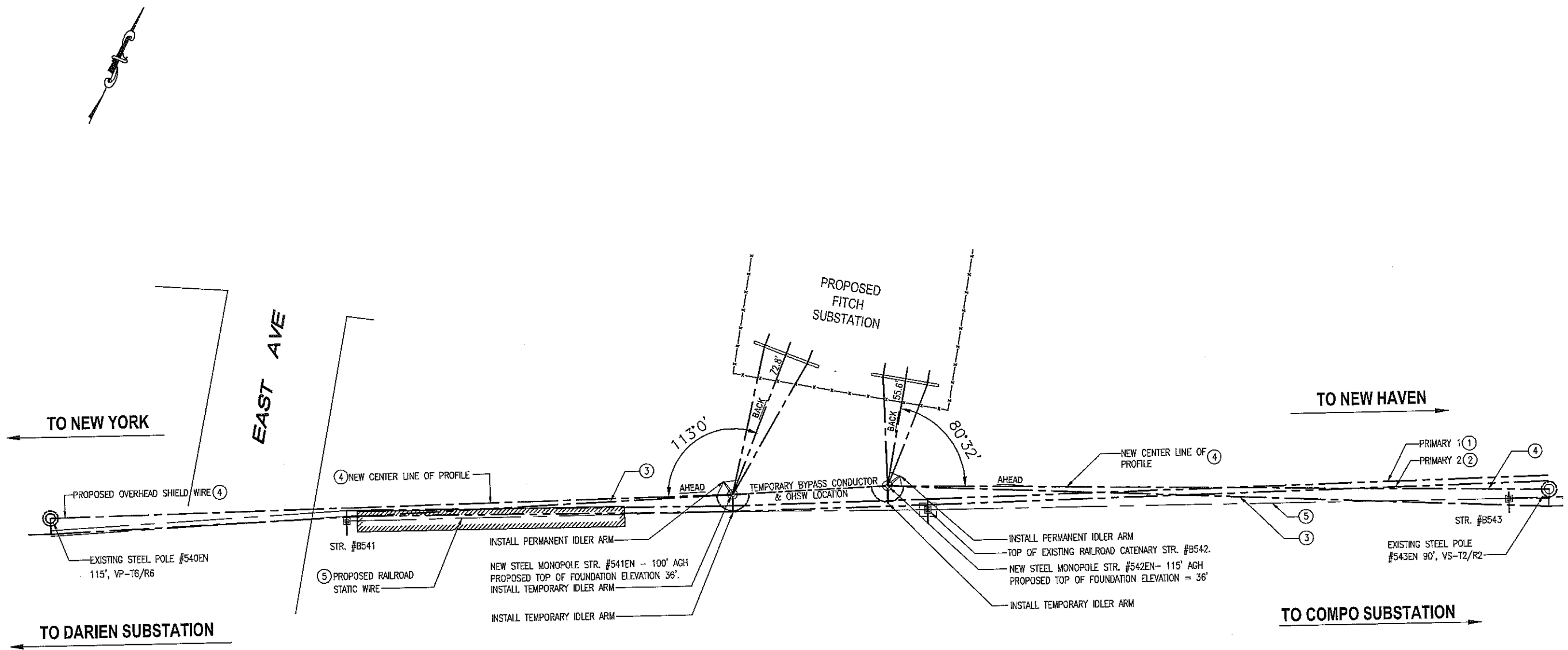
NUSCO SPEC. # T12-40

- ① REVISION: 2/1/2013 REFER TO SHEET T-12-40 FOR LAYOUT AND DIMENSIONS.
- ② REVISION: 2/1/2013 REFER TO SHEET T-12-40 FOR LAYOUT AND DIMENSIONS.
- ③ CHANGE TO SHEET T-12-40 REFER TO SHEET T-12-40 FOR LAYOUT AND DIMENSIONS.
- ④ REVISION: 2/1/2013 REFER TO SHEET T-12-40 FOR LAYOUT AND DIMENSIONS.
- ⑤ REVISION: 2/1/2013 REFER TO SHEET T-12-40 FOR LAYOUT AND DIMENSIONS.
- ⑥ REVISION: 2/1/2013 REFER TO SHEET T-12-40 FOR LAYOUT AND DIMENSIONS.

STATIONING		
STATION	DESCRIPTION	DATE
1	2+10	
2	2+20	
3	2+30	
4	2+40	
5	2+50	

Northeast Utilities Service Co.			
CONNECTION LIGHT & POWER COMPANY			
FITC SUBSTATION PRELIMINARY PLAN OF STEEL POLES PLAN & PROFILE NO. 151-115			
BY: JTRAVIS	DATE: 2/1/2013	APP: JTRAVIS	CHK: JTRAVIS
SCALE: 1" = 40'	DATE: 2/1/2013	PROJECT: FITC SUBSTATION	NO. 151-115
DATE: 2/1/2013		PROJECT: FITC SUBSTATION	
SCALE: 1" = 40'		NO. 151-115	
DATE: 2/1/2013		PROJECT: FITC SUBSTATION	
SCALE: 1" = 40'		NO. 151-115	

12/5/2012 10:26 AM - K:\Engineering\Transmission Engineering\TRANS\PROJECTS\Fitch Sub Norwalk\drawings\01191-99001.p001.dwg NU 01191-99001 PG 1




PARTIAL SITE PLAN
SCALE: N.T.S.

NUSCO SPEC. # T12-40

- ① PRIMARY 1 (4/0 COPPER 7 -STRAND) - MDT=4500 LBS UNDER LOADING CONDITION 1.
- ② PRIMARY 2 (4/0 COPPER 7 -STRAND) - MDT=4500 LBS UNDER LOADING CONDITION 1.
- ③ CONDUCTOR (1590 54/19 ACSS) - MDT=11400 LBS UNDER LOADING CONDITION 1.
- ④ OHSW (336.4 KCMIL ACSR 26/7) - MDT=4500 LBS UNDER LOADING CONDITION 1.
- ⑤ STATIC WIRE RAILROAD (4/0 COPPER 7 -STRAND) - MDT=4500 LBS UNDER LOADING CONDITION 1.

NO.	DATE	AS BUILT REVISIONS	BY	CHK	APP	APP

 Northeast Utilities Service Co. FOR THE CONNECTICUT LIGHT AND POWER COMPANY		TITLE FITCH SUBSTATION 115 KV- TRANSMISSION LINE LAYOUT PLAN NORWALK, CT	
		BY RRH DATE 11/28/12	CHKD JM DATE 11/28/12
H-SCALE 1"=30' V-SCALE 1"=30'		SIZE B V.S.	FIELD BOOK & PAGES R.E. DWG
R.E. PROJ. NUMBER		NUSCO 01191-99001 PG 1	