

POLE SPECIFICATIONS	
POLE HEIGHT	118.00 FEET
TAPER	.2250 IN/FT
POLE SHAPE	18 SIDED POLYGON
ORIENTATION	FLAT-FLAT

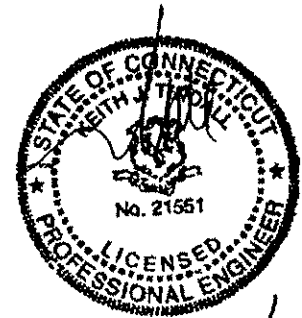
Lev	Qty	Elev Ft.	Future	DESCRIPTION
1	1	118.00	F	14' Low Profile Platform (R)
2	1	108.00	F	RR65-18-XXDPL2
3	3	96.00	F	14' T-Arm 5' Stand-Off
4	1	93.00	F	6' SOLID DISH W/ RAC
5	3	88.00	F	14' T-Arm 5' Stand-Off
6	3	78.00	F	14' T-Arm 5' Stand-Off

Load Case	DESCRIPTION	Wind (mph)	OLF	Rad. Ice	Factors	Wind (psf)
1)	Max Wind	115.0	1.00		1.69 .65	57.2
2)	Max Wind Load x.75	99.5	1.00	.50	1.69 .65	42.8
3)	Everyday Operating	50.0	1.00		1.69 .65	10.8

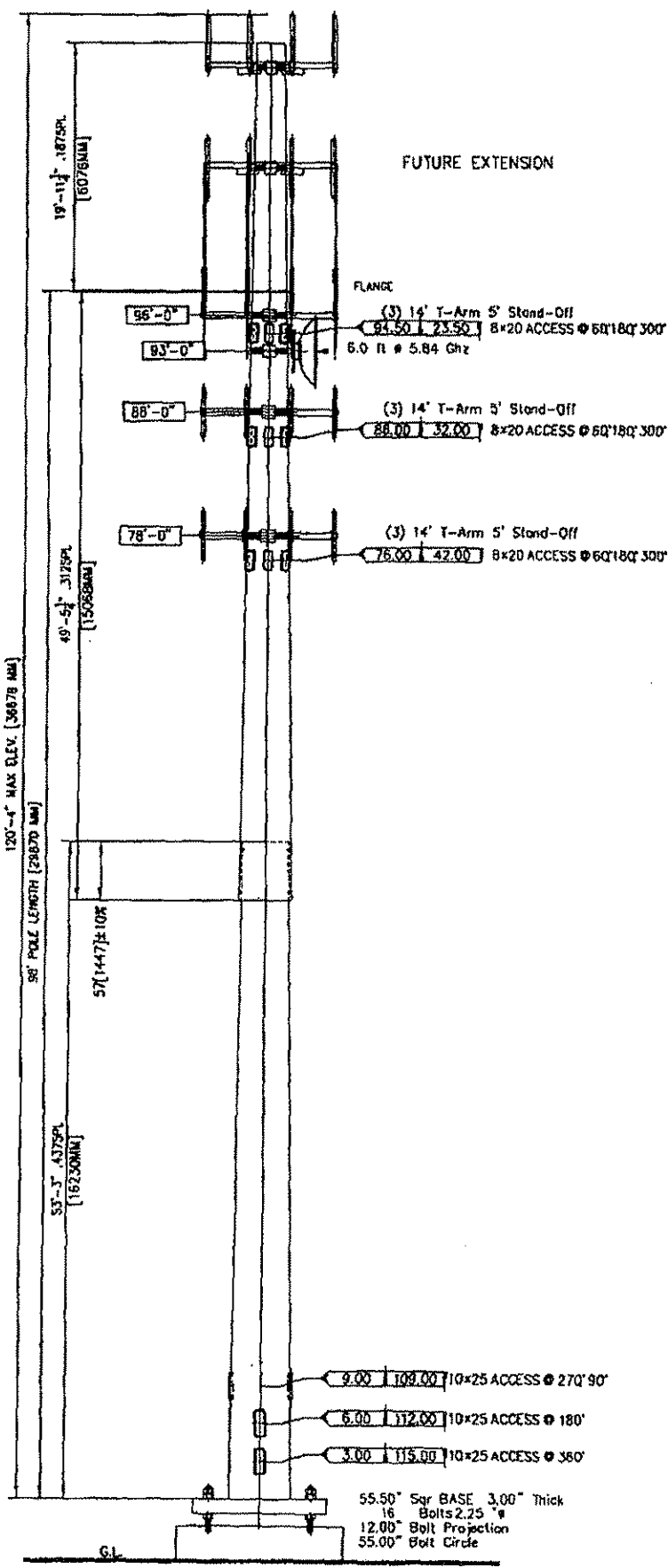
Load Case	DESCRIPTION	Askl (kips)	Base Shear (kips)	React Mom (ft-k)	Disp (ft)	Top DEFL (deg)	SWAY
1)	Max Wind	34.5	35.9	2985	5.3	4.39	
2)	Max Wind Load x.75	39.2	29.5	2491	4.4	3.70	
3)	Everyday Operating	34.0	6.8	565	1.0	.83	

Sec	LENGTH (ft)	Flat-Flat TOPe	Flat-Flat BOT#	THICK (in)	WEIGHT (lbs)	STEEL SPEC	FINISH
1	20.00	22.50	27.00	.1875	0	A572-65	Future
2	48.50	27.25	38.39	.3125	6300	A572-65	Galv
3	53.25	36.69	48.68	.4375	13100	A572-65	Galv
TOTAL						19400	
ABOH Cluster	Bolts	Hole#					
AB	84.00	2.25	2.625	2200 A615-75 Galv-18"			

- 1) FULL HEIGHT STEP BOLTS
- 2) ANTENNA FEED LINES RUN INSIDE POLE
- 3) THE MONOPOLE WAS DESIGNED IN ACCORDANCE WITH EIA/TIA-222-F.



7/27/10



T-MOBILE

Orchard Park Rd, CT
CTNH808A
99/119 MONOPOLE

Sabre
Towers & Poles

CONFIDENTIAL
Information contained herein is the sole property of Sabre Communications Corporation, confidential & trade secret as defined by laws Code Ch. 500 and shall not be reproduced, copied or used in whole or in part for any purpose whatsoever without prior written consent of Sabre Communications Corporation.

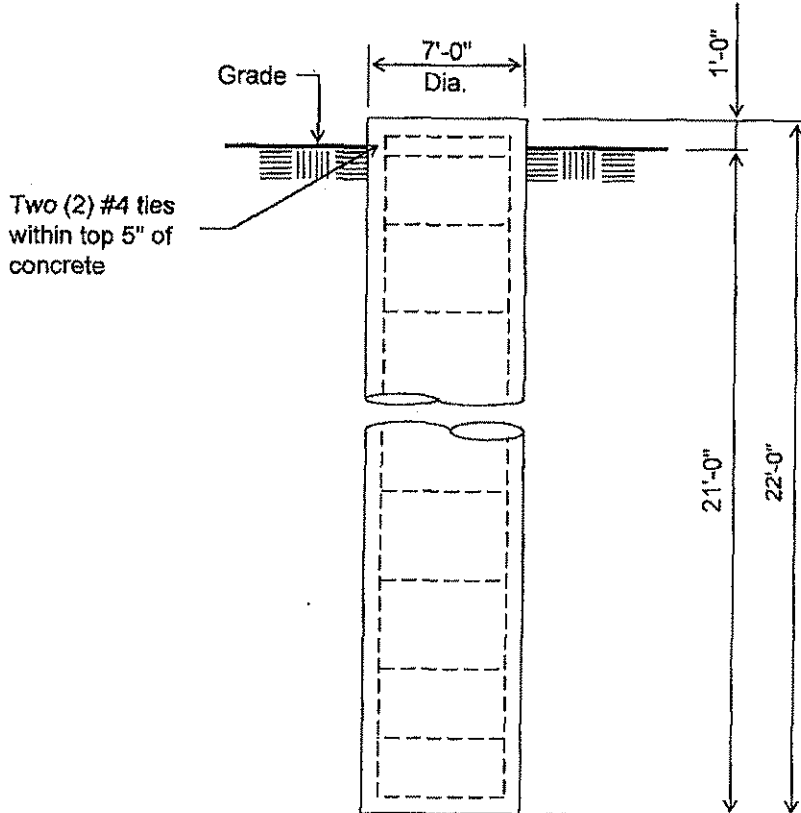
11-30257	SIZE	DRAWING NO.	REV
DATE	08 Jun 10	A	30257
DRAWN BY		REFERENCE DRAWING	SCALE
CHECKED BY	TRJ		N.T.S.



No.: 30257
 Page: 2
 7/26/2010
 By: REB
 Revision A

Customer: T-MOBILE
Site: Orchard Park Rd CTNH808A

99' Extendible to 119' Monopole at
 115 mph Wind + 0.5 in. Ice per ANSI/TIA/EIA-222-F-1996.
 Antenna Loading per Page 1



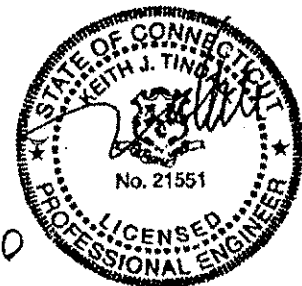
Notes:

- 1). Concrete shall have a minimum 28-day compressive strength of 4000 PSI, in accordance with ACI 318-05.
- 2). Rebars to conform to ASTM specification A615 Grade 60.
- 3). All rebar to have a minimum of 3" concrete cover.
- 4). All exposed concrete corners to be chamfered 3/4".
- 5). The foundation design is based on the geotechnical report by Terracon project no. J2095225, dated: 12/21/09 and the e-mail from Stephen C. Lanne, dated: 7/26/10
- 6). See the geotechnical report for drilled pier installation requirements, if specified.

ELEVATION VIEW
 (31.36 Cu. Yds. each)
 (1 REQUIRED; NOT TO SCALE)

Rebar Schedule per Pier	
Pier	(36) #8 vertical rebar w/#6 ties, two within top 5" of pier then 5" C/C

7/27/10



Information contained herein is the sole property of Sabre Towers & Poles, constitutes a trade secret as defined by Iowa Code Ch. 550 and shall not be reproduced, copied or used in whole or part for any purpose whatsoever without the prior written consent of Sabre Towers & Poles.