

# YASKAWA

# SOLECTRIA XGI™ 1500

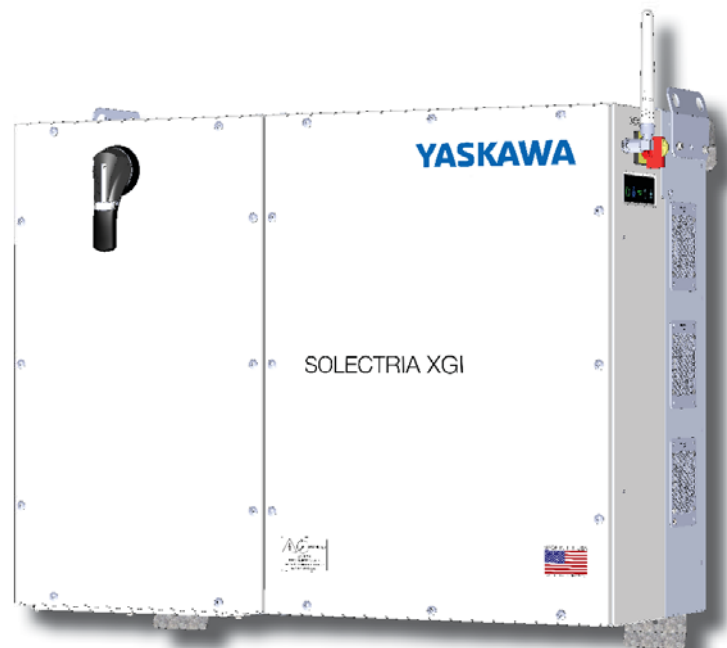
## Premium 3-Ph Transformerless Utility-Scale Inverters

### Features

- Made in the USA with global components
- Buy American Act (BAA) compliant
- Four models: 125kW/125kVA, 125kW/150kVA, 150kW/166kVA, 166kW/166kVA
- 99.0% peak efficiency
- Flexible solution for distributed and centralized system architecture
- Advanced grid-support functionality Rule 21/UL1741SA
- Robust, dependable and built to last
- Lowest O&M and installation costs
- Access all inverters on site via WiFi from one location
- Remote diagnostics and firmware upgrades

### Options

- String combiners for distributed and centralized systems
- Web-based monitoring
- Extended warranty



Yaskawa Solectria Solar's XGI 1500 utility-scale string inverters are designed for high reliability and built of the highest quality components that were selected, tested and proven to last beyond their warranty. The XGI 1500 inverters provide advanced grid-support functionality and meet the latest IEEE 1547 and UL 1741 standards for safety. The XGI 1500 inverters are the most powerful 1500VDC string inverters in the PV market and have been engineered for both distributed and centralized system architecture. Designed and engineered in Lawrence, MA, the new SOLECTRIA XGI inverters are assembled and tested at Yaskawa America's facilities in Buffalo Grove, IL. The XGI 1500 inverters are Made in the USA with global components and are compliant with the Buy American Act.



## SOLECTRIA SOLAR

# SOLECTRIA XGI 1500

## Specifications

	XGI 1500-125/125	XGI 1500-125/150	XGI 1500-150/166	XGI 1500-166/166
DC Input				
Absolute Maximum Input Voltage	1500 VDC	1500 VDC	1500 VDC	1500 VDC
Maximum Power Input Voltage Range (MPPT)	860-1250 VDC	860-1250 VDC	860-1250 VDC	860-1250 VDC
Operating Voltage Range (MPPT)	860-1450 VDC	860-1450 VDC	860-1450 VDC	860-1450 VDC
Number of MPP Trackers	1 MPPT	1 MPPT	1 MPPT	1 MPPT
Maximum Operating Input Current	148.3 A	148.3 A	178.0 A	197.7 A
Maximum Operating PV Power	128 kW	128 kW	153 kW	170 kW
Maximum DC/AC Ratio   Max Rated PV Power	2.0   250 kW	2.0   250 kW	1.66   250 kW	1.5   250 kW
Max Rated PV Short-Circuit Current (ΣIsc x 1.25)	320 A	320 A	320 A	320 A
AC Output				
Nominal Output Voltage	600 VAC, 3-Ph	600 VAC, 3-Ph	600 VAC, 3-Ph	600 VAC, 3-Ph
AC Voltage Range	-12% to +10%	-12% to +10%	-12% to +10%	-12% to +10%
Continuous Real Output Power	125 kW	125 kW	150 kW	166 kW
Continuous Apparent Output Power	125 kVA	150 kVA	166 kVA	166 kVA
Maximum Output Current	120 A	144 A	160 A	160 A
Nominal Output Frequency	60 Hz	60 Hz	60 Hz	60 Hz
Power Factor (Unity default)	+/- 0.85 Adjustable	+/- 0.85 Adjustable	+/- 0.85 Adjustable	+/- 0.85 Adjustable
Total Harmonic Distortion (THD) @ Rated Load	<3%	<3%	<3%	<3%
Grid Connection Type	3-Ph + N/GND	3-Ph + N/GND	3-Ph + N/GND	3-Ph + N/GND
Fault Current Contribution (1 cycle RMS)	144 A	173 A	192 A	192 A
Efficiency				
Peak Efficiency	98.9%	98.9%	99.0%	99.0%
CEC Average Efficiency	98.5%	98.5%	98.5%	98.5%
Tare Loss	<1 W	<1 W	<1 W	<1 W
Temperature				
Ambient Temperature Range	-40°F to 140°F (-40C to 60C)		-40°F to 140°F (-40C to 60C)	
De-Rating Temperature	122°F (50C)		113°F (45C)	
Storage Temperature Range	-40°F to 167°F (-40C to 75C)		-40°F to 167°F (-40C to 75C)	
Relative Humidity (non-condensing)	0 - 95%		0 - 95%	
Operating Altitude	9,840 ft (3 km)		9,840 ft (3 km)	
Communications				
Advanced Graphical User Interface	WiFi			
Communication Interface	Ethernet			
Third-Party Monitoring Protocol	SunSpec Modbus TCP/IP			
Web-Based Monitoring	Optional			
Firmware Updates	Remote and Local			
Testing & Certifications				
Safety Listings & Certifications	UL 1741, IEEE 1547, UL 1998			
Advanced Grid Support Functionality	Rule 21, UL 1741SA			
Testing Agency	ETL			
FCC Compliance	FCC Part 15, Class A			
Warranty				
Standard and Options	5 Years Standard; Option for 10 Years			
Enclosure				
Acoustic Noise Rating	56 dBA @ 3 m			
DC Disconnect	Integrated 2-Pole 250 A DC Disconnect			
Mounting Angle	Vertical only			
Dimensions	Height: 29.5 in. (750 mm)   Width: 39.4 in. (1000 mm)   Depth: 15.1 in. (380 mm)			
Weight	245 lbs (111 kg)			
Enclosure Rating and Finish	Type 4X, Polyester Powder-Coated Aluminum			

Specifications subject to change.

## SOLECTRIA SOLAR

**Yaskawa Solectria Solar**  
360 Merrimack Street  
Lawrence, MA 01843  
[solectria.com](http://solectria.com)

1-978-683-9700  
[inverters@solectria.com](mailto:inverters@solectria.com)

DOCR-070730-Q | Aug 2019  
© 2019 Yaskawa Solectria Solar

**YASKAWA**

# EliTe 1500V

## HIGH EFFICIENCY MODULE

ET-P672345WW/WB 345W

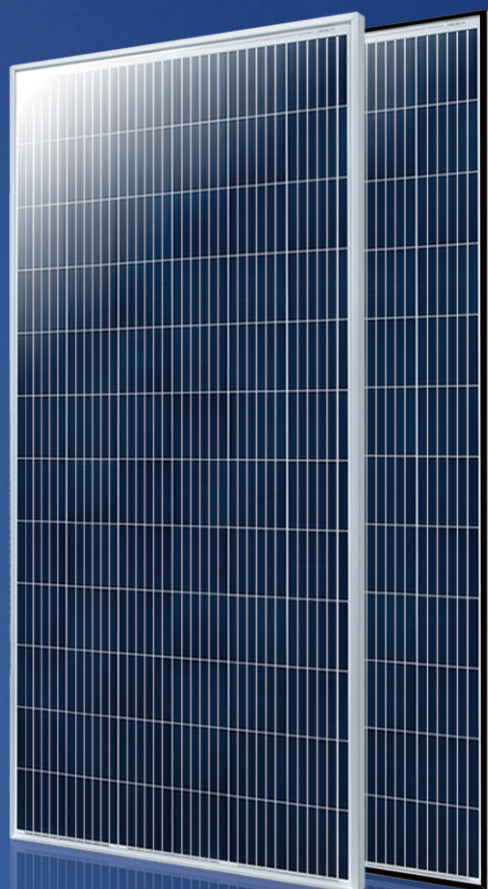
ET-P672340WW/WB 340W

ET-P672335WW/WB 335W

ET-P672330WW/WB 330W

ET-P672325WW/WB 325W

Knowing voltage increase as one of the effective methods to decrease line loss, ET's Product Department and R&D Team are devoted to developing high-efficient module while we are trying any probability of more power output by technology innovation like upgrading voltage level and decreasing line loss. ET 1500VDC Module is designed to realize a lower LCOE of the power plant, by allowing longer cable operation and longer string to pull down combiner-box quantity and narrow cable size.



1500

Designed for compatible with advanced high voltage 1500V solar plant



Significant saving on BoS cost



Extending string length up to 50%



Enhanced module durability



Higher system performance

IEC 61215 Ed.2  
IEC 61730  
UL 1703



CONFORMS TO UL STD. 1703  
CERTIFIED TO IEC/ISO STD. C 170301



ET SOLAR

Tel: +86 25 86898096

Fax: +86 25 86898097

Email: [info@etsolar.com](mailto:info@etsolar.com)

[www.etsolar.com](http://www.etsolar.com)

**ET** Solar

M/ET-PD-EN-US2019V2

## ELECTRICAL SPECIFICATIONS

Model Type	ET-P672345WW ET-P672345WB	ET-P672340WW ET-P672340WB	ET-P672335WW ET-P672335WB	ET-P672330WW ET-P672330WB	ET-P672325WW ET-P672325WB
Peak Power (Pmax)	345W	340W	335W	330W	325W
Module Efficiency	17.69%	17.43%	17.18%	16.92%	16.66%
Maximum Power Voltage (Vmp)	38.94V	38.42V	37.90V	37.58V	37.28V
Maximum Power Current (Imp)	8.86A	8.85A	8.84A	8.78A	8.72A
Open Circuit Voltage (Voc)	48.32V	47.67V	46.83V	46.65V	46.31V
Short Circuit Current (Isc)	9.52A	9.51A	9.47A	9.35A	9.28A
Power Tolerance	0 to +5W				
Operating Temperature	- 40 ~ + 85°C				
Maximum System Voltage	DC 1500V				
Nominal Operating Cell Temperature	45±2°C				
Fire Safety	Class C				
Maximum Series Fuse Rating	15A				

## MECHANICAL SPECIFICATIONS

Cell Type	6 inch
Number of Cells	72 cells in series
Weight	22.6 kg (49.82 lbs)
Dimension	1966×992×40mm (77.40×39.06×1.58 inch)
Max Load	5400 Pascals ( 112 lb/ft²)
Junction Box	IP67 rated
Connector	MC4 Compatible
Output cable	12AWG:PV Wire (UL)

## TEMPERATURE COEFFICIENT

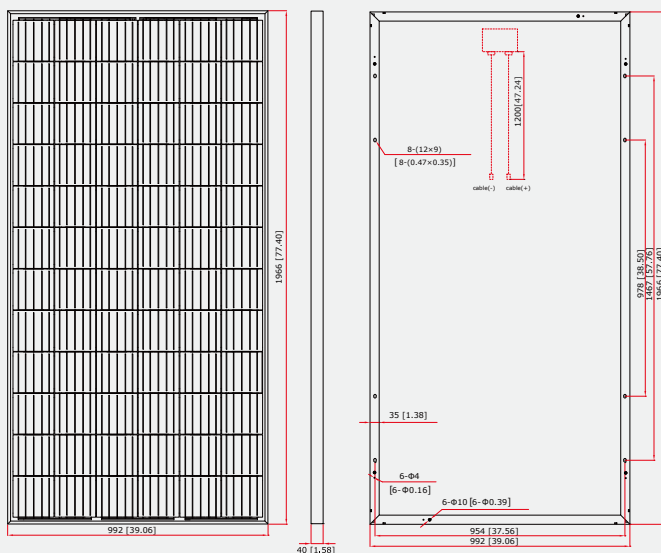
Temp. Coeff. of Isc (TK Isc)	0.04% /°C
Temp. Coeff. of Voc (TK Voc)	-0.34% /°C
Temp. Coeff. of Pmax (TK Pmax)	-0.41% /°C

## PACKING MANNER

Container	40' HQ
Pieces per Pallet	27
Pieces per Container	708

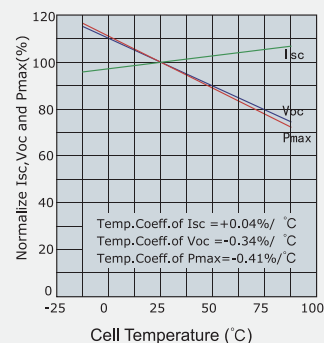
## PHYSICAL CHARACTERISTICS

Unit:mm (inch)

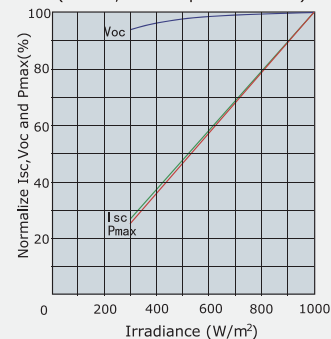


## ELECTRICAL CHARACTERISTICS

### Temperature Dependence of Isc, Voc and Pmax



### Irradiance Dependence of Isc, Voc and Pmax (AM1.5, Cell Temperature 25°C)



**Note:** the specifications are obtained under the Standard Test Conditions (STCs): 1000 W/m² solar irradiance, 1.5 Air Mass, and cell temperature of 25°C. The NOCT is obtained under the Test Conditions: 800 W/m², 20°C ambient temperature, 1m/s wind speed, AM 1.5 spectrum.

Please contact [support@etsolar.com](mailto:support@etsolar.com) for technical support. The actual transactions will be subject to the contracts. This parameters is for reference only and it is not a part of the contracts. The specifications are subject to change without prior notice.





## Fixed-Tilt Ground Mount Solution | GM-2

When EPCs and project developers across the USA need dependable, low-maintenance ground mount racking, they turn to RBI Solar. As a single-source provider, we take responsibility for the Design, Engineering, Manufacturing, and Installation of PV mounting solutions. When you choose RBI Solar for your next ground mount, you're choosing peace of mind that your project is in the hands of the most trusted solar racking team in the industry.

### *Why choose RBI Solar?*

- Professional Engineers licensed in all 50 states
- Quick response & efficient communication
- National installation capabilities
- Our in-house team members are an extension of your staff
- 85+ years manufacturing experience
- Complete turn-key process, reduction in your vendor coordination
- Company owned post driving equipment
- National project management capabilities with roaming site service personnel
- More time to focus on your business







### *GM-2 Solution Features*

Foundation and racking design	Site wind speeds 170+ mph and ground snow loads 90+ psf
Signed and sealed drawings	Available in all 50 states
Proprietary on-site testing	Pull testing & corrosion testing - no geotechnical report required
Pre-assembled parts	Reduction in installation time
Variable slope	Accommodates slopes up to 30% (with topographic site map)
20-yr standard warranty	Proven rack reliability and bankability
G115 minimum galvanized coating	Exceeds ASTM and UL standards for 30% extended life
Driven posts	Cost-effective cee channel or I-beam post options available
Up to 24' long post driving	Ability to address challenging soils or elevate array structure
Module configurations	Portrait, landscape (all module types)
Raised purlins	Integrated bonding and grounding to UL 2703
Corrosion class	System available for all corrosion classes
Wire management and electrical	Integrated wire management solution and inverter mounting

*Contact us at [info@rbisolar.com](mailto:info@rbisolar.com) or (513) 242-2051*

DESIGN • ENGINEERING • MANUFACTURING • INSTALLATION

6715 Steger Drive, Cincinnati, OH 45237 | 513-242-2051 | [info@rbisolar.com](mailto:info@rbisolar.com) | [www.rbisolar.com](http://www.rbisolar.com)

