

CARLA'S PASTA
SOUTH WINDSOR, CONNECTICUT



FUEL CELL INSTALLATION

SITE:

CARLA'S PASTA
280 NUTMEG ROAD
SOUTH WINDSOR, CT

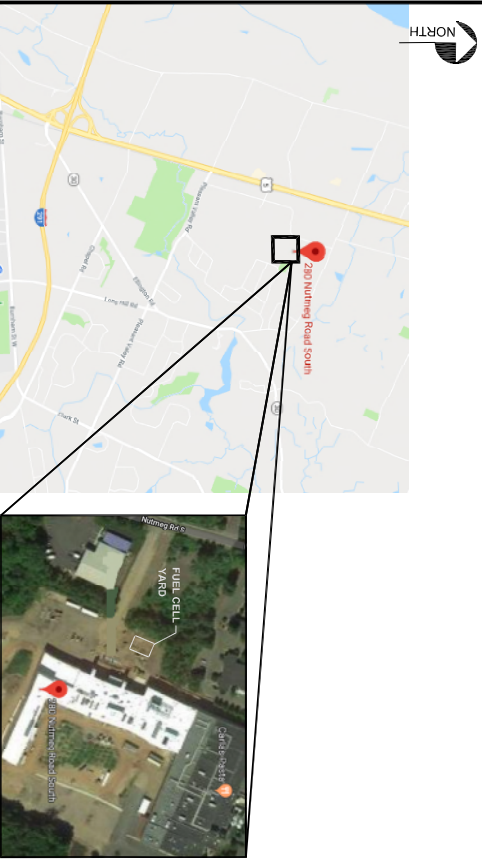
ENGINEER:

INNOVATIVE CONSTRUCTION & DESIGN SOLUTIONS, LLC
419A WHITFIELD STREET
GUILFORD, CT 06437
(203) 453-8596

PROJECT MANAGER:

DOOSAN FUEL CELL AMERICA, INC.
DONALD EMANUEL
195 GOVERNOR'S HIGHWAY
SOUTH WINDSOR, CT 06074
(860) 727-2160

PROJECT SITE MAP



DRAWING INDEX

CS.1.0	COVER SHEET
GA.0	FUEL CELL YARD GENERAL ARRANGEMENT SITE PLAN
SI.0	STRUCTURAL CONCRETE PLAN
SI.1	STRUCTURAL DETAILS
SL.1.0	STRUCTURAL LANDSCAPE PLAN
MI.0	MECHANICAL GENERAL NOTES, SPEC & LEGENDS
M2.0	MECHANICAL PILING PLAN
M3.0	MECHANICAL DETAILS
M4.0	MECHANICAL PILING AND INSTRUMENTATION DIAGRAM
M4.1	MECHANICAL PILING AND INSTRUMENTATION DIAGRAM
E1.0	ELECTRICAL ONE LINE DIAGRAM
E2.0	ELECTRICAL PANEL PLANS
E3.0	ELECTRICAL DETAILS AND DIAGRAMS
E3.1	ELECTRICAL DETAILS AND DIAGRAMS
E4.0	ELECTRICAL SPECIFICATIONS

REFERENCE DOCUMENTS

FOAMANT888 REV-C
PRMAN88801
DOOSAN INSTALLATION MANUAL
DOOSAN PRODUCT DATA AND APPLICATIONS GUIDE
GRID INDEPENDENT WIRING APPLICATION GUIDE
(PROVIDED BY DOOSAN)

DESIGN CODES

CONNECTICUT STATE BUILDING CODE 2018 AS AMENDED
2017 NATIONAL ELECTRICAL CODE (NFPA 70)
2018 INTERNATIONAL BUILDING CODE
2015 INTERNATIONAL PLUMBING CODE
2015 NATIONAL FIRE ALARM AND SIGNALING CODE (NFPA 72)
2015 NATIONAL FUEL GAS CODE (NFPA 54)

CARLA'S PASTA
280 NUTMEG ROAD, SOUTH WINDSOR, CT
FUEL CELL REPLACEMENT

COVER SHEET



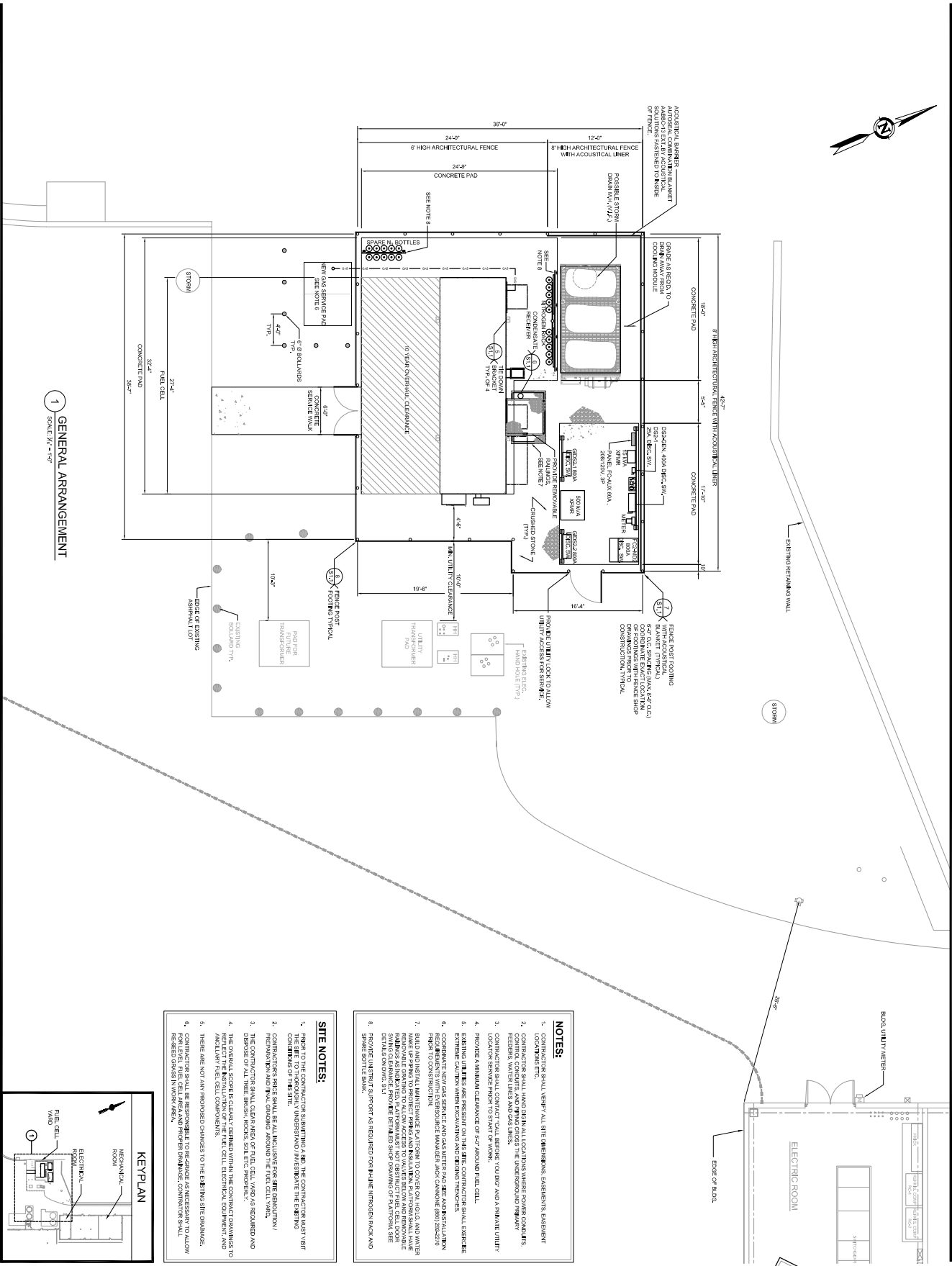
419A Whitfield Street
Guilford, CT 06437
Phone: (203) 453-8596
Email: info@icds.com

**ISSUED FOR DOOSAN
INTERNAL REVIEW ONLY**
06/06/19

Rev.	Date	Description

Product No.:
Drawing No.:
Date: 06/06/19
Scale: 1/8" = 1'-0"
Sheet No.: KFH
Sheet Set: KFH
Client: DoS
City: South Windsor, CT

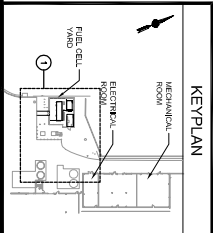
CS.1.0



1 GENERAL ARRANGEMENT
SCALE: 1/8\"/>

- NOTES:**
- CONTRACTOR SHALL VERIFY ALL SITE DIMENSIONS, EXISTING UTILITIES AND RECORD DRAWINGS SHALL BE USED TO LOCATE ALL UTILITIES. CONTRACTOR SHALL VERIFY ALL UTILITIES ARE CORRECTLY LOCATED AND DEPTHS ARE AS SHOWN ON RECORD DRAWINGS.
 - CONTRACTOR SHALL VERIFY ALL UTILITIES ARE CORRECTLY LOCATED AND DEPTHS ARE AS SHOWN ON RECORD DRAWINGS.
 - CONTRACTOR SHALL VERIFY ALL UTILITIES ARE CORRECTLY LOCATED AND DEPTHS ARE AS SHOWN ON RECORD DRAWINGS.
 - CONTRACTOR SHALL VERIFY ALL UTILITIES ARE CORRECTLY LOCATED AND DEPTHS ARE AS SHOWN ON RECORD DRAWINGS.
 - CONTRACTOR SHALL VERIFY ALL UTILITIES ARE CORRECTLY LOCATED AND DEPTHS ARE AS SHOWN ON RECORD DRAWINGS.
 - CONTRACTOR SHALL VERIFY ALL UTILITIES ARE CORRECTLY LOCATED AND DEPTHS ARE AS SHOWN ON RECORD DRAWINGS.
 - CONTRACTOR SHALL VERIFY ALL UTILITIES ARE CORRECTLY LOCATED AND DEPTHS ARE AS SHOWN ON RECORD DRAWINGS.
 - CONTRACTOR SHALL VERIFY ALL UTILITIES ARE CORRECTLY LOCATED AND DEPTHS ARE AS SHOWN ON RECORD DRAWINGS.

- SITE NOTES:**
- REFER TO THE CONTRACTOR'S GENERAL NOTES AND THE CONTRACTOR'S GENERAL NOTES FOR THE SITE TO DETERMINE THE EXISTING UTILITIES AND RECORD DRAWINGS.
 - CONTRACTOR SHALL VERIFY ALL UTILITIES ARE CORRECTLY LOCATED AND DEPTHS ARE AS SHOWN ON RECORD DRAWINGS.
 - CONTRACTOR SHALL VERIFY ALL UTILITIES ARE CORRECTLY LOCATED AND DEPTHS ARE AS SHOWN ON RECORD DRAWINGS.
 - CONTRACTOR SHALL VERIFY ALL UTILITIES ARE CORRECTLY LOCATED AND DEPTHS ARE AS SHOWN ON RECORD DRAWINGS.
 - CONTRACTOR SHALL VERIFY ALL UTILITIES ARE CORRECTLY LOCATED AND DEPTHS ARE AS SHOWN ON RECORD DRAWINGS.
 - CONTRACTOR SHALL VERIFY ALL UTILITIES ARE CORRECTLY LOCATED AND DEPTHS ARE AS SHOWN ON RECORD DRAWINGS.
 - CONTRACTOR SHALL VERIFY ALL UTILITIES ARE CORRECTLY LOCATED AND DEPTHS ARE AS SHOWN ON RECORD DRAWINGS.
 - CONTRACTOR SHALL VERIFY ALL UTILITIES ARE CORRECTLY LOCATED AND DEPTHS ARE AS SHOWN ON RECORD DRAWINGS.



ISSUED FOR DOOSAN
INTERNAL REVIEW ONLY
06/06/19

Rev.	Date	Description

<p>CARLA'S PASTA 280 NUTMEG ROAD, SOUTH WINDSOR, CT FUEL CELL REPLACEMENT</p> <p>GENERAL ARRANGEMENT</p>		<p>419A Whitfield Street Gulfport, CT 06437</p> <p>Phone: (203) 453-8596 Email: info@icds.com</p> <p>ICDS Innovative Construction & Design Solutions, LLC</p>
<p>Project No.: GA1.0</p> <p>Drawn By: KFH</p> <p>Check By: KFH</p> <p>Date: 06/06/19</p> <p>Scale: AS NOTED</p> <p>Drawn No.: GA1.0</p>	<p>Product No.: KFH</p> <p>Drawn By: KFH</p> <p>Check By: KFH</p> <p>Date: 06/06/19</p> <p>Scale: AS NOTED</p> <p>Drawn No.: GA1.0</p>	