



April 26, 2019

James J. Murphy, Jr.
Vice Chairman
The Connecticut Siting Council
Ten Franklin Square
New Britain, CT 06051

Dear Chairman Murphy:

Enclosed please find an original plus fifteen (15) copies of The United Illuminating Company's ("UI") petition to the Connecticut Siting Council requesting a declaratory ruling that no Certificate of Environmental Compatibility and Public Need is necessary for the proposed modifications to UI's Hawthorne Substation (the "Project"). The purpose of the Project is to replace the existing secondary line scheme on the 1720 Line Relay ("Line Relay") between The Connecticut Light and Power Company d/b/a Eversource Energy's ("Eversource") Norwalk Substation and UI's Hawthorne Substation ("Substation") with a high speed protection scheme in order to comply with the Northeast Power Coordinating Council Inc.'s ("NPCC") Implementation Plan for revised NPCC Directory 1 on the ISO New England Inc. ("ISO-NE") bulk power system, which was approved by the NPCC's Reliability Coordinating Committee on September 10, 2015.

Eversource and UI will need to coordinate engineering and construction activities to help complete the entire scope of work in 2019. UI will install the Line Relay from the Substation to a demarcation point, which marks the end of UI's service territory. Eversource will continue installation of the Line Relay from the demarcation point and extend it into its service territory where it will interconnect to Eversource's Norwalk Substation.

Pursuant to the Regulations of Connecticut State Agencies § 16-50j-40, all required parties, including the appropriate municipal and governmental agencies and officials, are being notified contemporaneously with this submittal. Abutters to the Project were notified previously.

Should you have any questions, please contact me at 203-499-2586.

A check in the amount of \$625 for the required filing fee is also attached.

Very truly yours,

Outreach Specialist
The United Illuminating Company

Enclosures

THE UNITED ILLUMINATING COMPANY
PETITION TO THE CONNECTICUT SITING COUNCIL
FOR A DECLARATORY RULING OF
NO SUBSTANTIAL ADVERSE ENVIRONMENTAL EFFECT
FOR PROPOSED MODIFICATIONS TO THE
EXISTING HAWTHORNE SUBSTATION IN THE TOWN OF FAIRFIELD, CONNECTICUT

1. Introduction

Pursuant to Section 16-50g et seq. of the Connecticut General Statutes, The United Illuminating Company (“UI”) hereby petitions the Connecticut Siting Council (“Council”) for a Declaratory Ruling that a Certificate of Environmental Compatibility and Public Need (“Certificate”) is not required for the proposed modifications to UI’s existing Hawthorne Substation in Fairfield, Connecticut (“Project”) that are described herein. UI submits that no such Certificate is required because the proposed modifications will not have a substantial adverse environmental effect.

2. Purpose of Project

The purpose of the Project is to replace the existing secondary line scheme on the 1720 Line Relay (“Line Relay”) between The Connecticut Light and Power Company d/b/a Eversource Energy’s (“Eversource”) Norwalk Substation and UI’s Hawthorne Substation (“Substation”) with a high speed protection scheme in order to comply with the Northeast Power Coordinating Council Inc.’s (“NPCC”) Implementation Plan for revised NPCC Directory 1 on the ISO New England Inc. (“ISO-NE”) bulk power system, which was approved by the NPCC’s Reliability Coordinating Committee on September 10, 2015.¹

Eversource and UI will need to coordinate engineering and construction activities to help complete the entire scope of work in 2019. UI will install the Line Relay from the Substation to a demarcation point, which marks the end of UI’s service territory. Eversource will continue installation of the Line Relay from the demarcation point and extend it into its service territory where it will interconnect to Eversource’s Norwalk Substation.

¹ Implementation Plan for Revised NPCC Directory 1, RCC Approval – Sept. 10, 2015 (Attachment D to this Petition).

In addition, UI will replace Load Tap Changer (“LTC”) controllers on two main transformers inside the Substation yard. The LTC controllers for both transformers are vintage 1960 General Electric (“GE”) controllers, which are no longer manufactured and for which spare parts are no longer available; these are legacy devices that have limited functionality and have reached the end of their useful life.

UI is an electric utility company organized and operating under the laws of the State of Connecticut, with its principal place of business in Orange, Connecticut. UI is a wholly-owned subsidiary of UIL Holdings Corporation and a wholly-owned indirect subsidiary of Avangrid, Inc., and is engaged in the purchase, transmission, distribution, and sale of electricity for residential, commercial, and industrial customers in a service area of approximately 335 square miles in the southwestern part of Connecticut. UI will lead the proposed construction activities.

Please address all correspondence and/or communications regarding this petition to Petitioner’s counsel:

Nicholas J. Cicale
Attorney
UIL Holdings Corporation
180 Marsh Hill Road
Orange, CT 06477
203.499.2996
nicholas.cicale@uinet.com

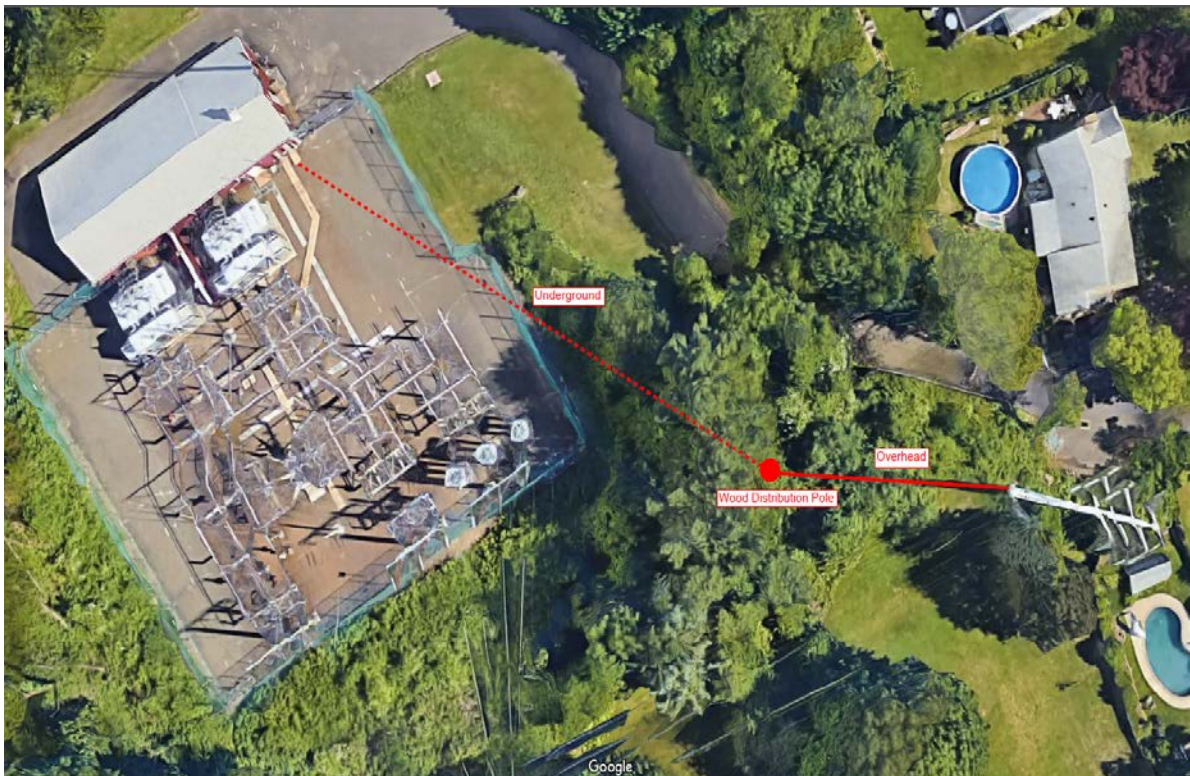
3. Project Description

Planned modifications to the Substation include:

Replacement of the Line Relay, where UI will:

- a) Replace the existing GE D60 relay with new GE L90 relay;
- b) Install a new 87CO switch;
- c) Install a new fiber patch panel inside the Substation control enclosure; and
- d) Extend spare dark fibers from a nearby Eversource transmission tower at Hawthorne Drive into the Substation control enclosure, which includes:

- 1. Installation of one wooden pole to support the overhead crossing of the fiber line from the Eversource transmission tower to the UI Substation property; and
- 2. Extending the fiber line from the Substation, via an underground trench, to the newly installed wooden pole and continue overhead to the existing Eversource transmission tower.



Source: Google Earth, April 2019

UI will install the following equipment for the purpose of LTC Controller Replacement within the existing fenced Substation yard (see Attachment A - Drawing No. 25242-404):

- a) New digital LTC controllers on both transformers and associated monitoring equipment;
- b) Concrete foundations for new auxiliary control cabinets; and
- c) New conduits between control cabinets and cable trenches.

4. **The proposed modifications will not have a substantial adverse environmental effect for the following reasons:**

a) The Resulting Visual Impact will be negligible

The resulting visual impact will be negligible as the new Line Relay will be installed underground and extend from the Substation to the point where the new wooden pole will be set. The wooden pole will be used to eliminate the need for any soil or vegetation disturbance outside UI property.

The addition of this wooden pole, the potential removal of one tree, and the modest pruning of a second tree would be the only instances of visual impact.

All LTC control work will be completed behind the transformer, which will not affect visual impact.



SIMULATION

PHOTO

1

LOCATION

ADJACENT TO 192 HAWTHORNE DRIVE

ORIENTATION

NORTHWEST

Source: Visibility Analysis, Hawthorne Substation



Source: Visibility Analysis, Hawthorne Substation

b) Trenching

The new Line Relay will be installed underground and extend from the Substation to the newly installed wooden pole, and will be located in a trench that will be approximately 18" wide and 24" deep.

The duration of time needed for excavation of the trench and to fully restore the disturbed area will not exceed 30 days.

Appropriate stormwater mitigation measures will be in place prior to the commencement of trenching activities and will remain in place until the ground is stabilized with growing vegetation at which time the stormwater mitigation measures will be removed.

c) Clearing

No clearing or grubbing of brush to facilitate the Line Relay installation will occur.

d) Radio and Television Interference

There will be no change to the existing television or radio interference at the Substation.

e) Sound Pressure

Sound-pressure levels at all points along property lines will continue to meet and comply with Connecticut regulations specified in Regulations of Connecticut State Agencies §§ 22a-69-1 et seq.

f) Substation Security and Lighting

The Substation has existing security measures including security cameras, an alarm system, and lighting for safety and security purposes

g) Environmental Effects

- i. UI's review of Natural Diversity Data Base information available via the data sharing agreement with the Connecticut Department of Energy and Environmental Protection suggests that one species of special concern may exist within 1,000 feet of the Project. This species has been identified as the Eastern Box Turtle. Based on the proximity of the Eastern Box Turtle habitat, certain protection and workforce communication measures will be implemented during work activities. Therefore, UI intends to perform the following:
 - Species specific training to all onsite personnel; and
 - Daily turtle sweeps of the work area prior to and at the close of work activities,
- ii. The proposed modifications will not affect any wetlands or waterways; nor will the proposed modifications occur within a 500-year or 100-year flood zone.
- iii. Electric and magnetic field levels at the Substation property boundary will not change as a result of the modifications.

5. UI proposes to begin construction during Fall of 2019 and expects construction to be completed by January of 2020.
6. Section 16-50k(a) of the Connecticut General Statutes provides that a Certificate of Environmental Compatibility and Public Need is needed for proposed modifications of a facility that the Council determines would have a “substantial” adverse environmental effect. UI respectfully submits that the proposed modifications described above will not result in a substantial adverse effect on the environment or ecology, nor will they damage existing scenic, historical or recreational values. Accordingly, UI requests that the Council issue a Declaratory Ruling that no Certificate is required.

Respectfully submitted,

THE UNITED ILLUMINATING COMPANY

By: Nicholas J. Cicale

Nicholas J. Cicale

Attorney

UIL Holdings Corporation

180 Marsh Hill Road

Orange, CT 06477

Phone: 203-499-2996

E-mail: nicholas.cicale@uinet.com

By: Charles Wallis

Charles Wallis

Project Manager

The United Illuminating Company

180 Marsh Hill Road

Orange, CT 06477

203.499.2063

Email: charles.wallis@uinet.com

CERTIFICATION

This is to certify that on this 29th day of April, 2019, an original and fifteen (15) copies of the foregoing was delivered by hand to the Connecticut Siting Council, 10 Franklin Square, New Britain, CT, and prior to such, notice of this filing was sent to all required entities, in accordance with § 16-50j-40 of the Regulations of Connecticut State Agencies.

By: Nicholas J. Cicale

Nicholas J. Cicale
Attorney
UIL Holdings Corporation
180 Marsh Hill Road
Orange, CT 06477

ID	Owner Name	Address	Mailing Address (if different)
1	Sacred Heart University Inc.	3135 Easton Turnpike	ATTN: John J. Petrillo President 5151 Park Avenue Fairfield, CT 06825-1090
2	Charlene J. Lebo	210 Schiller Road	
3	Jason & Stacy Tournas	186 Schiller Road	106 Woolsley Avenue Trumbull, CT 06611-4460
4	Maureen G. Boda	172 Schiller Road	
5	Louis & Stephanie Johnson	274 Hawthorne	
6	Annette Herman	254 Hawthorne	
7	Gary A & Jacqueline Azarian	192 Hawthorne	
8	Joseph G. & Jill B. Almeida	160 Hawthorne	
9	Mary R. Skarzynski	136 Hawthorne	
10	Stephen P. Stolarski & Christine T. Marchese	112 Hawthorne	
11	Keith Cook & Nancy Husted	92 Hawthorne	

OFFICIAL/AGENCY	NAME/ADDRESS
Town of Fairfield Chief Elected Official	Michael C. Tetreau First Selectman Sullivan Independence Hall 725 Old Post Road Fairfield, CT 06824
Town of Fairfield Town Plan and Zoning	Jim Wendt Planning Director Sullivan Independence Hall 725 Old Post Road Fairfield, CT 06824
Town of Fairfield Building Official	Tom Conley Chief Building Official Sullivan Independence Hall, Second Floor 725 Old Post Road Fairfield, CT 06824
Town of Fairfield Office of the Town Clerk	Betsy P. Browne CMC, MCTC, Town Clerk Old Town Hall 611 Old Post Road Fairfield, CT 06824
Town of Fairfield Office of Community & Economic Development	Mark S. Barnhart Director Old Town Hall 611 Old Post Road Fairfield, CT 06824
Town of Fairfield Legal Department	Stanton Lesser, Esq. Town Attorney One Eliot Place Fairfield, CT 06824
Fairfield State Senator	The Honorable Tony Hwang Legislative Office Building Room 3400 Capitol Avenue Hartford, CT 06106
Fairfield State Representative	The Honorable Laura Devlin Legislative Office Building Room 4200 Capitol Avenue Hartford, CT 06106
Connecticut Attorney General	William Tong, Attorney General Office of the Attorney General 55 Elm Street Hartford, CT 06106
Connecticut Assistant Attorney General	Joshua Jackson, Assistant Attorney General Office of the Attorney General 55 Elm Street Hartford, CT 06106
Economic & Community Development Department	David Lehman, Commissioner Office of the Commissioner 450 Columbus Boulevard Hartford, CT 06103

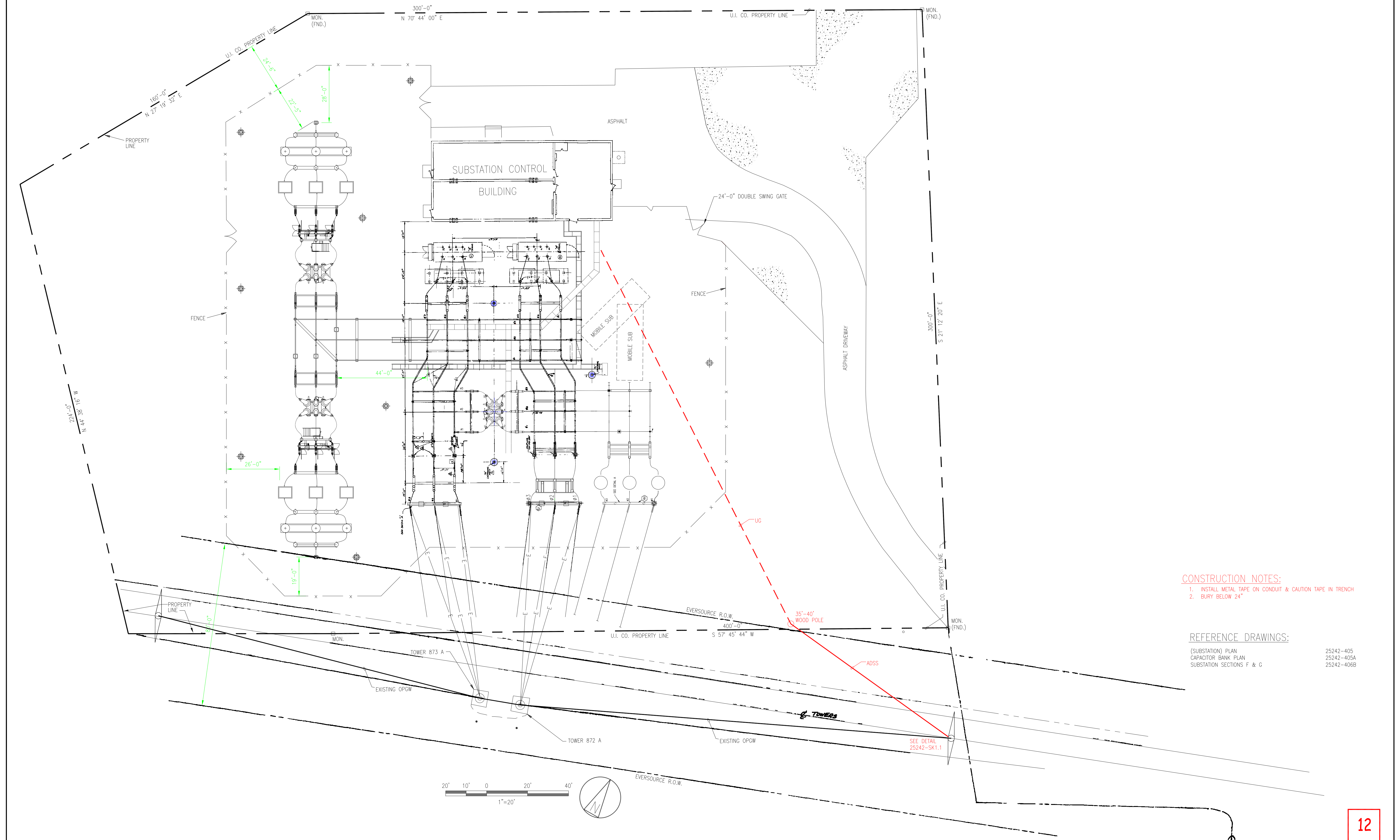
Department of Agriculture	Bryan P. Hurlburt, Commissioner Department of Agriculture 450 Columbus Blvd, Suite 701 Hartford, Connecticut 06103
Office of Consumer Counsel	Elin Swanson Katz, Esq Consumer Counsel. Office of Consumer Counsel Ten Franklin Square New Britain, CT 06051-2605
Department of Energy and Environmental Protection	Katie S. Dykes, Commissioner Department of Energy and Environmental Protection 79 Elm Street Hartford, CT 06106-5127
Public Utilities Regulatory Authority	Michael Caron, Commissioner Public Utilities Regulatory Authority Ten Franklin Square New Britain, CT 06051
Department of Public Health	Renée D. Coleman-Mitchell, Commissioner Department of Public Health 410 Capitol Ave. Hartford CT, 06134
Council on Environmental Quality	Susan D. Merrow, Chair Connecticut Council on Environmental Quality 79 Elm Street Hartford, CT 06106
Office of Policy and Management	Melissa McCaw, Secretary Office of Policy and Management 450 Capitol Avenue Hartford, CT 06106
Department of Transportation	Joe Giuliatti, Commissioner Office of the Commissioner Department of Transportation 2800 Berlin Turnpike Newington, CT 06111
State Historic Preservation Officer of the Connecticut Department of Economic and Community Development, Commission on Culture and Tourism	Mary Dunne State Historic Preservation Officer 450 Columbus Blvd. Suite 5 Hartford, CT 06103
Department of Emergency Services and Public Protection	James C. Rovella, Commissioner Office of the Commissioner Department of Emergency Services and Public Protection 1111 Country Club Road Middletown, CT 06457
Connecticut Metropolitan Council of Governments	Matt Fulda Executive Director 1000 Lafayette Blvd Bridgeport, CT 06604

U.S. Fish and Wildlife Service	Supervisor Tom Chapman U.S. Fish & Wildlife Service New England Office 70 Commercial Street Concord, NH 03301-5087
U.S. Army Corps of Engineers	U.S. Army Corps of Engineers New England District, Regulatory Division 696 Virginia Avenue Concord, MA 01742-2751 Attn: Permit Project Manager

Attachments

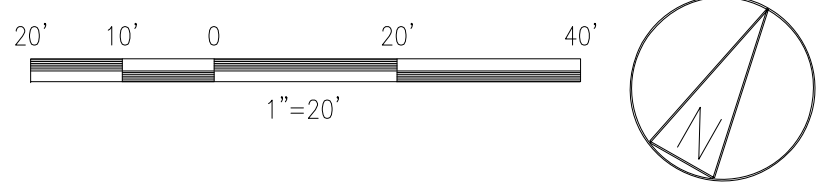
Attachment A	Site Plans
Attachment B	Visual Assessment
Attachment C	Abutters Map Abutters List Certified Letter Receipts Notification Letters
Attachment D	Implementation Plan for Revised NPCC Directory 1

Attachment A



- CONSTRUCTION NOTES:
- 1. INSTALL METAL TAPE ON CONDUIT & CAUTION TAPE IN TRENCH
 - 2. BURY BELOW 24"

- REFERENCE DRAWINGS:
- | | |
|---------------------------|------------|
| (SUBSTATION) PLAN | 25242-405 |
| CAPACITOR BANK PLAN | 25242-405A |
| SUBSTATION SECTIONS F & G | 25242-406B |



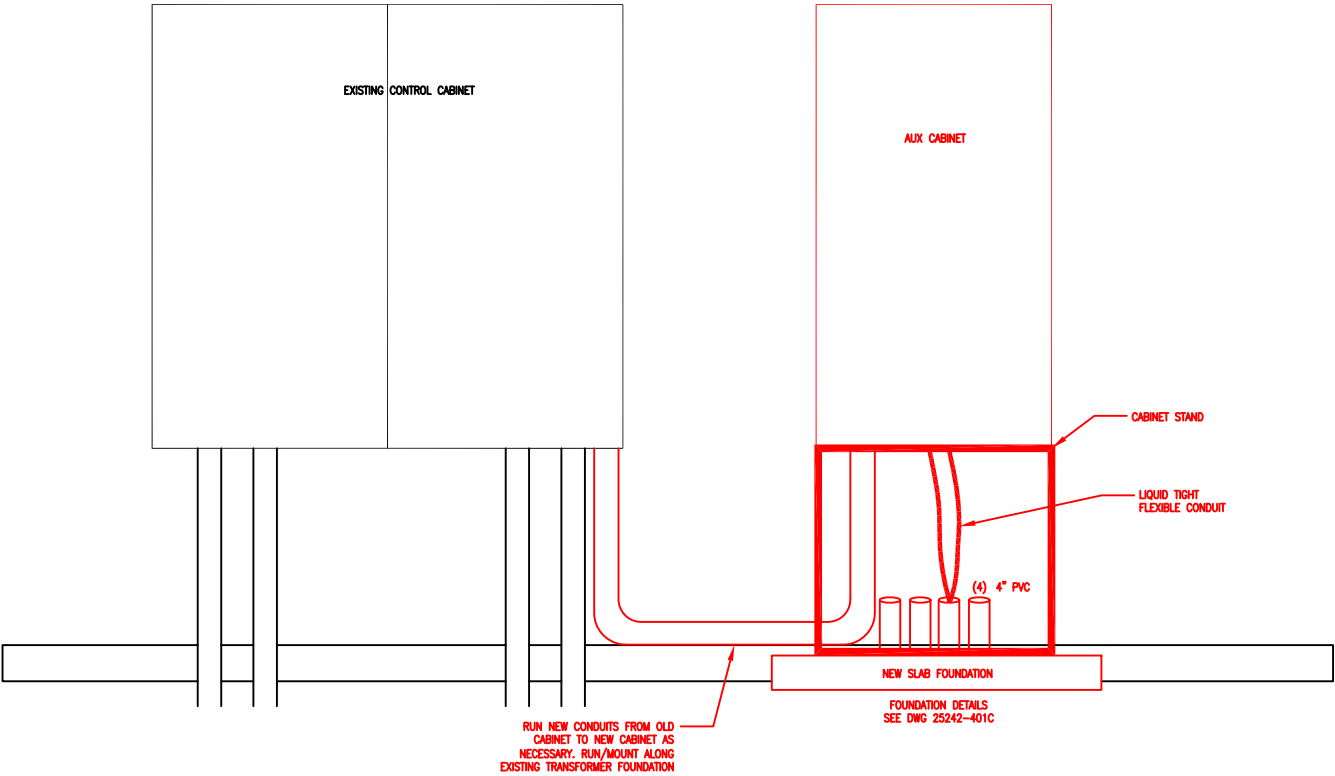
DOES NOT CONTAIN
CRITICAL ENERGY INFRASTRUCTURE INFORMATION
DATE OF REVIEW 7/01/2016 BY MPC

5A	1/17/2019	LTC REPLACEMENT- REVISED	VJP	JPW	JPW	CJH
5	8/2/2018	LTC REPLACEMENT	VJP	JPW	JPW	CJH
4	07/01/2016	CAPACITOR BANK ADDITION/CTCR PROJECT #188336	GRE/SLG	TKD	DRJ	DJK
3	12/8/2011	REVISION	LST		AVR	AVR
2	3/30/2006	SUBSTATION SECURITY CAMERA ADDITION	LST		MMW	RJP
1	1/12/73	REVISED DURING CONSTRUCTION	LJ		RJR	JJZ
No	Date	Revision	By	Chkd.	Engr.	Supv.



Drawn	Date 09/11/2014	Scale: 1"=20'
Chkd.	Design Engr.	Design Supv.

LOCATION PLAN		
HAWTHORNE SUBSTATION		
CAD FILE NAME	SEQUENCE No.	DRAWING NUMBER
	024500	25242-404



CONTROL CABINET ELEVATION

																																																																																																																																																																																																																																																																																																																																																																																																																																																																																																																																																																																																																																																																																																																																																																																																																																																																																																																																																																																																																																																																																																																																																																																																																																																																																																																																																																																																																																																																				</
--	--	--	--	--	--	--	--	--	--	--	--	--	--	--	--	--	--	--	--	--	--	--	--	--	--	--	--	--	--	--	--	--	--	--	--	--	--	--	--	--	--	--	--	--	--	--	--	--	--	--	--	--	--	--	--	--	--	--	--	--	--	--	--	--	--	--	--	--	--	--	--	--	--	--	--	--	--	--	--	--	--	--	--	--	--	--	--	--	--	--	--	--	--	--	--	--	--	--	--	--	--	--	--	--	--	--	--	--	--	--	--	--	--	--	--	--	--	--	--	--	--	--	--	--	--	--	--	--	--	--	--	--	--	--	--	--	--	--	--	--	--	--	--	--	--	--	--	--	--	--	--	--	--	--	--	--	--	--	--	--	--	--	--	--	--	--	--	--	--	--	--	--	--	--	--	--	--	--	--	--	--	--	--	--	--	--	--	--	--	--	--	--	--	--	--	--	--	--	--	--	--	--	--	--	--	--	--	--	--	--	--	--	--	--	--	--	--	--	--	--	--	--	--	--	--	--	--	--	--	--	--	--	--	--	--	--	--	--	--	--	--	--	--	--	--	--	--	--	--	--	--	--	--	--	--	--	--	--	--	--	--	--	--	--	--	--	--	--	--	--	--	--	--	--	--	--	--	--	--	--	--	--	--	--	--	--	--	--	--	--	--	--	--	--	--	--	--	--	--	--	--	--	--	--	--	--	--	--	--	--	--	--	--	--	--	--	--	--	--	--	--	--	--	--	--	--	--	--	--	--	--	--	--	--	--	--	--	--	--	--	--	--	--	--	--	--	--	--	--	--	--	--	--	--	--	--	--	--	--	--	--	--	--	--	--	--	--	--	--	--	--	--	--	--	--	--	--	--	--	--	--	--	--	--	--	--	--	--	--	--	--	--	--	--	--	--	--	--	--	--	--	--	--	--	--	--	--	--	--	--	--	--	--	--	--	--	--	--	--	--	--	--	--	--	--	--	--	--	--	--	--	--	--	--	--	--	--	--	--	--	--	--	--	--	--	--	--	--	--	--	--	--	--	--	--	--	--	--	--	--	--	--	--	--	--	--	--	--	--	--	--	--	--	--	--	--	--	--	--	--	--	--	--	--	--	--	--	--	--	--	--	--	--	--	--	--	--	--	--	--	--	--	--	--	--	--	--	--	--	--	--	--	--	--	--	--	--	--	--	--	--	--	--	--	--	--	--	--	--	--	--	--	--	--	--	--	--	--	--	--	--	--	--	--	--	--	--	--	--	--	--	--	--	--	--	--	--	--	--	--	--	--	--	--	--	--	--	--	--	--	--	--	--	--	--	--	--	--	--	--	--	--	--	--	--	--	--	--	--	--	--	--	--	--	--	--	--	--	--	--	--	--	--	--	--	--	--	--	--	--	--	--	--	--	--	--	--	--	--	--	--	--	--	--	--	--	--	--	--	--	--	--	--	--	--	--	--	--	--	--	--	--	--	--	--	--	--	--	--	--	--	--	--	--	--	--	--	--	--	--	--	--	--	--	--	--	--	--	--	--	--	--	--	--	--	--	--	--	--	--	--	--	--	--	--	--	--	--	--	--	--	--	--	--	--	--	--	--	--	--	--	--	--	--	--	--	--	--	--	--	--	--	--	--	--	--	--	--	--	--	--	--	--	--	--	--	--	--	--	--	--	--	--	--	--	--	--	--	--	--	--	--	--	--	--	--	--	--	--	--	--	--	--	--	--	--	--	--	--	--	--	--	--	--	--	--	--	--	--	--	--	--	--	--	--	--	--	--	--	--	--	--	--	--	--	--	--	--	--	--	--	--	--	--	--	--	--	--	--	--	--	--	--	--	--	--	--	--	--	--	--	--	--	--	--	--	--	--	--	--	--	--	--	--	--	--	--	--	--	--	--	--	--	--	--	--	--	--	--	--	--	--	--	--	--	--	--	--	--	--	--	--	--	--	--	--	--	--	--	--	--	--	--	--	--	--	--	--	--	--	--	--	--	--	--	--	--	--	--	--	--	--	--	--	--	--	--	--	--	--	--	--	--	--	--	--	--	--	--	--	--	--	--	--	--	--	--	--	--	--	--	--	--	--	--	--	--	--	--	--	--	--	--	--	--	--	--	--	--	--	--	--	--	--	--	--	--	--	--	--	--	--	--	--	--	--	--	--	--	--	--	--	--	--	--	--	--	--	--	--	--	--	--	--	--	--	--	--	--	--	--	--	--	--	--	--	--	--	--	--	--	--	--	--	--	--	--	--	--	--	--	--	--	--	--	--	--	--	--	--	--	--	--	--	--	--	--	--	--	--	--	--	--	--	--	--	--	--	--	--	--	--	--	--	--	--	--	--	--	--	--	--	--	--	--	--	--	--	--	--	--	--	--	--	--	--	--	--	--	--	--	--	--	--	--	--	--	--	--	--	--	--	--	--	--	--	--	--	--	--	--	--	--	--	--	--	--	--	--	--	--	--	--	--	--	--	--	--	--	--	--	--	--	--	--	--	--	--	--	--	--	--	--	--	--	--	--	--	--	--	--	--	--	--	--	--	--	--	--	--	--	--	--	--	--	--	--	--	--	--	--	--	--	--	--	--	--	--	--	--	--	--	--	--	--	--	--	--	--	--	--	--	--	--	--	--	--	--	--	--	--	--	--	--	--	--	--	--	--	--	--	--	--	--	--	--	--	--	--	--	--	--	--	--	--	--	--	--	--	--	--	--	--	--	--	--	--	--	--	--	--	--	--	--	--	--	--	--	--	--	--	--	--	--	--	--	--	--	--	--	--	--	--	--	--	--	--	--	--	--	--	--	--	--	--	--	--	--	--	--	--	--	--	--	--	--	--	--	--	--	--	--	--	--	--	--	--	--	--	--	--	--	--	--	--	--	--	--	--	--	--	--	--	--	--	--	--	--	--	--	--	--	--	--	--	--	--	--	--	--	--	--	--	--	--	--	--	--	--	--	--	--	--	--	--	--	--	--	--	--	--	--	--	--	--	--	--	--	--	--	--	--	--	--	--	--	--	--	--	--	--	--	--	--	--	--	--	--	--	--	--	--	--	--	--	--	--	--	--	--	--	--	--	--	--	--	--	--	--	--	--	--	--	--	--	--	--	--	--	--	--	--	--	--	--	--	--	--	--	--	--	--	--	--	--	--	--	--	--	--	--	--	--	--	--	--	--	--	--	--	--	--	--	--	--	--	--	--	--	--	--	----

Attachment B

Visual Assessment

HAWTHORNE SUBSTATION
HAWTHORNE DRIVE
FAIRFIELD, CT

Prepared in April 2019 by:
All-Points Technology Corporation, P.C.
3 Saddlebrook Drive
Killingworth, CT 06419

Prepared for The United Illuminating Company



VISUAL ASSESSMENT

The United Illuminating Company (“UI”) is proposing to install a new wooden pole at its existing Hawthorne Substation (the “Project”) at 180 Hawthorne Drive in Fairfield, Connecticut (the “Property”). On behalf of UI, All-Points Technology Corporation, P.C. (“APT”) completed this visual assessment, photographed existing conditions and prepared computer-generated photo-simulations depicting post-development conditions associated with the Project.

Project Setting

The 2.8-acre Property is located in a mostly residential area (zoned R-3), approximately 0.5 mile southeast of Exit 46 of the Merritt Parkway (CT Route 15). Commercial property (owned and operated by General Electric) abuts the Property to the north and west. Originally constructed in the 1970s and modified recently, Hawthorne Substation is a distribution substation measuring approximately 220 feet (east to west) by 295 feet (north to south). The Project would include the installation of one ±40-foot tall wooden pole located in the southeast corner of the Property, beyond the limits of the fence-enclosed Substation. The new pole would support an ADSS (All-Dielectric Self-Supporting) overhead cable extending from an existing transmission structure to the south. In addition to the new wooden pole, the Project may require the potential removal of one tree and modest pruning of a second tree.

Methodology

APT personnel conducted two separate field visits (on March 11 and April 10, 2019, respectively) to assess and photo-document existing conditions. Several neighboring locations along Hawthorne Drive and Schiller Road were evaluated to determine what, if any, changes might occur resulting from proposed installation.

Photographs were taken with a Canon EOS 6D digital camera body and Canon EF 24 to 105 millimeter (“mm”) zoom lens, with the lens set to a focal length of 50mm, presenting a consistent field of view. The Canon EOS 6D is a full-framed camera which includes a lens receptor of the same size as the film used in 35mm cameras. As such, the images produced are comparable to those taken with a conventional 35 mm camera.

Three-dimensional computer models were developed for the proposed installation from AutoCAD information. Photographic simulations were then generated to portray scaled renderings of the Project (see attached graphics). Using field data, site plan information and image editing software, the new pole and appurtenances were scaled to the correct location and height, relative to the existing Substation and surrounding area. For presentation purposes in this report, the photographs were produced in an approximate 7-inch by 10.5-inch format¹. A photolog map and copies of the existing conditions photographs and photo-simulations are attached.

Conclusions

The visibility of the proposed pole would not substantially change existing conditions as viewed from neighboring locations. The wooden pole is similar in dimension to several distribution poles along the local roads. Further, the Project area is adjacent to a maintained transmission right-of-way, but is otherwise surrounded by existing trees, including evergreens, and understory vegetation.

¹ When viewing in this format size, we believe it is important to provide the largest representational image while maintaining an accurate relation of sizes between objects within the frame of the photograph and depicting the subject in a way similar to what an observer might see, to the greatest extent possible.

Based on the results of this assessment, it is APT's opinion that the proposed installation of a new wooden pole at the Hawthorne Substation would not be highly visible or have a significant impact on existing aesthetics of the area.

ATTACHMENTS



PHOTO LOG

Legend

■ Site ● Year-Round ● Not Visible



1 inch = 200 feet
200 100 0 200
Feet





DOCUMENTATION

PHOTO	LOCATION	ORIENTATION
1	ADJACENT TO 192 HAWTHORNE DRIVE	NORTHWEST



SIMULATION

PHOTO

1

LOCATION

ADJACENT TO 192 HAWTHORNE DRIVE

ORIENTATION

NORTHWEST



DOCUMENTATION

PHOTO

2

LOCATION

ADJACENT TO 160 HAWTHORNE DRIVE

ORIENTATION

WEST



SIMULATION

PHOTO

2

LOCATION

ADJACENT TO 160 HAWTHORNE DRIVE

ORIENTATION

WEST



DOCUMENTATION

PHOTO

3

LOCATION

HAWTHORNE DRIVE

ORIENTATION

SOUTHWEST



DOCUMENTATION

PHOTO

4

LOCATION
SCHILLER ROAD

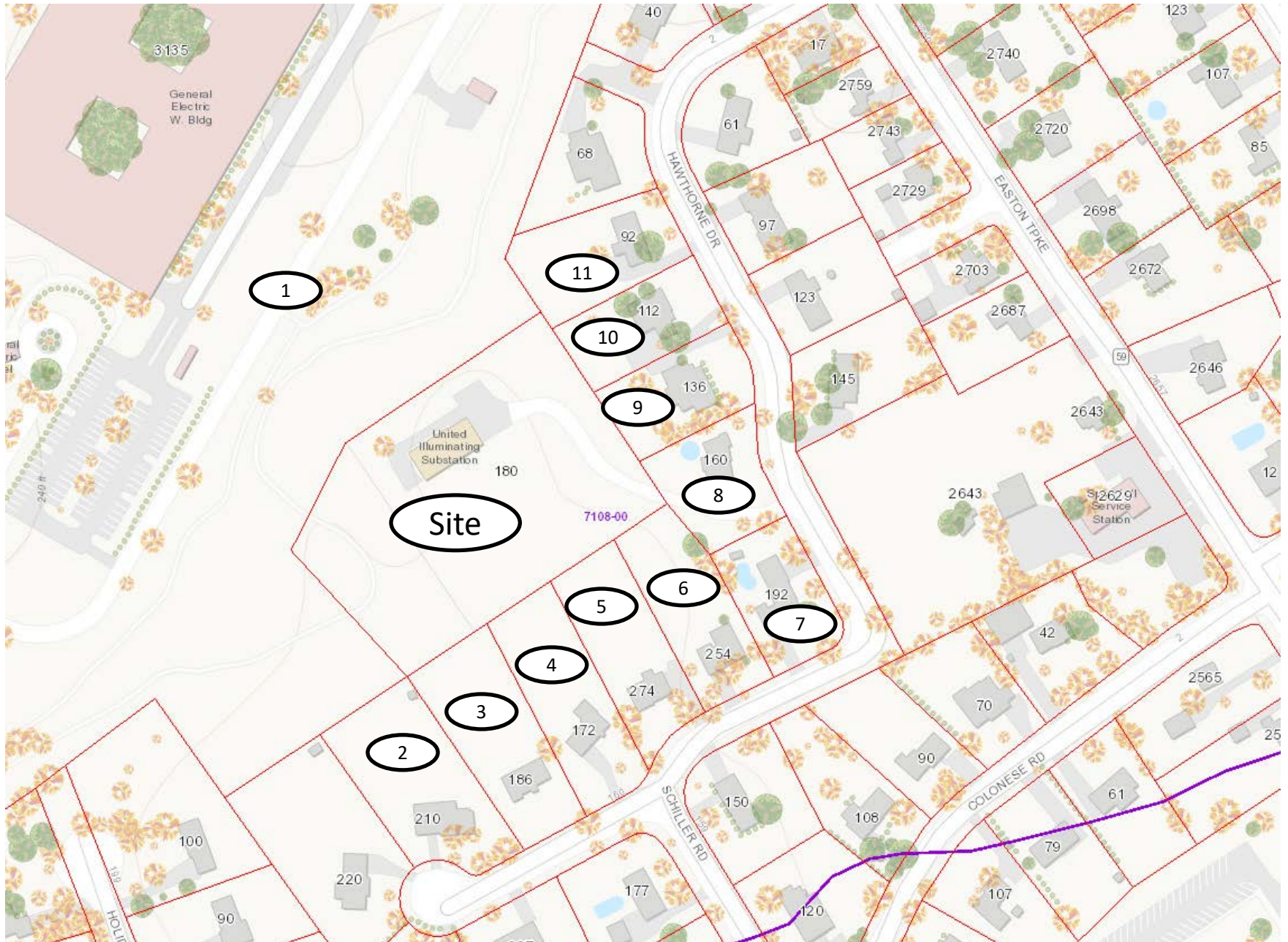
ORIENTATION
NORTH

Attachment C

Hawthorne Substation Abutters

<u>ID</u>	<u>Address</u>	<u>Parcel ID</u>	<u>Owner Name</u>	<u>Mailing Address (if different)</u>	<u>Volume/Page</u>
1	3135 Easton Turnpike	Map 22 Lot 91	Sacred Heart University Inc.	ATTN: John J. Petrillo President 5151 Park Avenue Fairfield, CT 06825-1090	570/362
2	210 Schiller Road	Map 51 Lot 30	Charlene J. Lebo		4765/190
3	186 Schiller Road	Map 51 Lot 31	Jason & Stacy Tournas	106 Woolsley Avenue Trumbull, CT 06611-4460	5180/348
4	172 Schiller Road	Map 51 Lot 32	Maureen G. Boda		5375/6
5	274 Hawthorne Drive	Map 51 Lot 33	Louis & Stephanie Johnson		2057/155
6	254 Hawthorne Drive	Map 51 Lot 34	Annette Herman		2162/66
7	192 Hawthorne Drive	Map 24 Lot 113	Gary A & Jacqueline Azarian		3635/144
8	160 Hawthorne Drive	Map 24 Lot 114	Joseph G. & Jill B. Almeida		4097/71
9	136 Hawthorne Drive	Map 24 Lot 115	Mary R. Skarzynski		4249/137
10	112 Hawthorne Drive	Map 24 Lot 116	Stephen P. Stolarski & Christine T. Marchese		4777/332
11	92 Hawthorne Drive	Map 24 Lot 117	Keith Cook & Nancy Husted		3054/263

Hawthorne Substation, Fairfield – Adjacent Owners Map – 4/17/2019



U.S. Postal Service
CERTIFIED MAIL® RECEIPT
Domestic Mail Only

For delivery information, visit our website at www.usps.com®.

OFFICIAL USE

Certified Mail Fee

\$

Extra Services & Fees (check box, add fee as appropriate)

☐ Return Receipt (hardcopy)

\$

☐ Return Receipt (electronic)

\$

☐ Certified Mail Restricted Delivery

\$

☐ Adult Signature Required

\$

☐ Adult Signature Restricted Delivery

\$

Postage

\$

Total Postage and Fees

\$

Sent To

Street and Apt. No., or PO Box No.

City, State, ZIP+4®

PS Form 3800, April 2015 PSN 7530-02-000-9047

See Reverse for Instructions

Postmark Here

Jason & Stacy Tournas
106 Woosley Avenue
Trumbull, CT 06611-4460

7019 0160 0000 7476 5742

U.S. Postal Service
CERTIFIED MAIL® RECEIPT
Domestic Mail Only

For delivery information, visit our website at www.usps.com®.

OFFICIAL USE

Certified Mail Fee

\$

Extra Services & Fees (check box, add fee as appropriate)

☐ Return Receipt (hardcopy)

\$

☐ Return Receipt (electronic)

\$

☐ Certified Mail Restricted Delivery

\$

☐ Adult Signature Required

\$

☐ Adult Signature Restricted Delivery

\$

Postage

\$

Total Postage and Fees

\$

Sent To

Street and Apt. No., or PO Box No.

City, State, ZIP+4®

PS Form 3800, April 2015 PSN 7530-02-000-9047

See Reverse for Instructions

Postmark Here

Louis & Stephanie Johnson
274 Hawthorne Drive
Fairfield, CT 06825

7019 0160 0000 7476 5742

U.S. Postal Service
CERTIFIED MAIL® RECEIPT
Domestic Mail Only

For delivery information, visit our website at www.usps.com®.

OFFICIAL USE

Certified Mail Fee

\$

Extra Services & Fees (check box, add fee as appropriate)

☐ Return Receipt (hardcopy)

\$

☐ Return Receipt (electronic)

\$

☐ Certified Mail Restricted Delivery

\$

☐ Adult Signature Required

\$

☐ Adult Signature Restricted Delivery

\$

Postage

\$

Total Postage and Fees

\$

Sent To

Street and Apt. No., or PO Box No.

City, State, ZIP+4®

PS Form 3800, April 2015 PSN 7530-02-000-9047

See Reverse for Instructions

Postmark Here

Gary A & Jacqueline Azarian
192 Hawthorne Drive
Fairfield, CT 06825

7019 0160 0000 7476 5605

U.S. Postal Service™
CERTIFIED MAIL® RECEIPT
Domestic Mail Only

For delivery information, visit our website at www.usps.com®.

OFFICIAL USE

Certified Mail Fee

\$

Extra Services & Fees (check box, add fee as appropriate)

☐ Return Receipt (hardcopy)

\$

☐ Return Receipt (electronic)

\$

☐ Certified Mail Restricted Delivery

\$

☐ Adult Signature Required

\$

☐ Adult Signature Restricted Delivery

\$

Postage

\$

Total Postage and Fees

\$

Sent To

Street and Apt. No., or PO Box No.

City, State, ZIP+4®

PS Form 3800, April 2015 PSN 7530-02-000-9047

See Reverse for Instructions

Postmark Here

Annette Herman
254 Hawthorne Drive
Fairfield, CT 06825

7019 0160 0000 7476 5728

U.S. Postal Service™
CERTIFIED MAIL® RECEIPT
Domestic Mail Only

For delivery information, visit our website at www.usps.com®.

OFFICIAL USE

Certified Mail Fee

\$

Extra Services & Fees (check box, add fee as appropriate)

☐ Return Receipt (hardcopy)

\$

☐ Return Receipt (electronic)

\$

☐ Certified Mail Restricted Delivery

\$

☐ Adult Signature Required

\$

☐ Adult Signature Restricted Delivery

\$

Postage

\$

Total Postage and Fees

\$

Sent To

Street and Apt. No., or PO Box No.

City, State, ZIP+4®

PS Form 3800, April 2015 PSN 7530-02-000-9047

See Reverse for Instructions

Postmark Here

Maureen G. Boda
172 Schiller Road
Fairfield, CT 06825

7019 0160 0000 7476 5728

U.S. Postal Service™
CERTIFIED MAIL® RECEIPT
Domestic Mail Only

For delivery information, visit our website at www.usps.com®.

OFFICIAL USE

Certified Mail Fee

\$

Extra Services & Fees (check box, add fee as appropriate)

☐ Return Receipt (hardcopy)

\$

☐ Return Receipt (electronic)

\$

☐ Certified Mail Restricted Delivery

\$

☐ Adult Signature Required

\$

☐ Adult Signature Restricted Delivery

\$

Postage

\$

Total Postage and Fees

\$

Sent To

Street and Apt. No., or PO Box No.

City, State, ZIP+4®

PS Form 3800, April 2015 PSN 7530-02-000-9047

See Reverse for Instructions

Postmark Here

Joseph G. & Jill B. Almeida
160 Hawthorne Drive
Fairfield, CT 06825

7019 0160 0000 7476 5650

U.S. Postal Service™
CERTIFIED MAIL® RECEIPT
Domestic Mail Only

For delivery information, visit our website at www.usps.com®.

OFFICIAL USE

Certified Mail Fee

\$

Extra Services & Fees (check box, add fee as appropriate)

☐ Return Receipt (hardcopy)

\$

☐ Return Receipt (electronic)

\$

☐ Certified Mail Restricted Delivery

\$

☐ Adult Signature Required

\$

☐ Adult Signature Restricted Delivery

\$

Postage

\$

Total Postage and Fees

\$

Sent To

Street and Apt. No., or PO Box No.

City, State, ZIP+4®

PS Form 3800, April 2015 PSN 7530-02-000-9047

See Reverse for Instructions

Postmark Here

Charlene J. Lebo
210 Schiller Road
Fairfield, CT 06825

7019 0160 0000 7476 5698

U.S. Postal Service™
CERTIFIED MAIL® RECEIPT
Domestic Mail Only

For delivery information, visit our website at www.usps.com®.

OFFICIAL USE

Certified Mail Fee

\$

Extra Services & Fees (check box, add fee as appropriate)

☐ Return Receipt (hardcopy)

\$

☐ Return Receipt (electronic)

\$

☐ Certified Mail Restricted Delivery

\$

☐ Adult Signature Required

\$

☐ Adult Signature Restricted Delivery

\$

Postage

\$

Total Postage and Fees

\$

Sent To

Street and Apt. No., or PO Box No.

City, State, ZIP+4®

PS Form 3800, April 2015 PSN 7530-02-000-9047

See Reverse for Instructions

Postmark Here

Sacred Heart University Inc.
ATTN: John J. Petrillo, President
5151 Park Avenue
Fairfield, CT 06825-1090

7019 0160 0000 7476 5698

U.S. Postal Service™
CERTIFIED MAIL® RECEIPT
Domestic Mail Only

For delivery information, visit our website at www.usps.com®.

OFFICIAL USE

Certified Mail Fee

\$

Extra Services & Fees (check box, add fee as appropriate)

☐ Return Receipt (hardcopy)

\$

☐ Return Receipt (electronic)

\$

☐ Certified Mail Restricted Delivery

\$

☐ Adult Signature Required

\$

☐ Adult Signature Restricted Delivery

\$

Postage

\$

Total Postage and Fees

\$

Sent To

Street and Apt. No., or PO Box No.

City, State, ZIP+4®

PS Form 3800, April 2015 PSN 7530-02-000-9047

See Reverse for Instructions

Postmark Here

Keith Cook & Nancy Husted
92 Hawthorne Drive
Fairfield, CT 06825

7019 0160 0000 7476 5681

U.S. Postal Service™
CERTIFIED MAIL® RECEIPT
Domestic Mail Only

For delivery information, visit our website at www.usps.com®.

OFFICIAL USE

Certified Mail Fee

\$

Extra Services & Fees (check box, add fee as appropriate)

☐ Return Receipt (hardcopy)

\$

☐ Return Receipt (electronic)

\$

☐ Certified Mail Restricted Delivery

\$

☐ Adult Signature Required

\$

☐ Adult Signature Restricted Delivery

\$

Postage

\$

Total Postage and Fees

\$

Sent To

Street and Apt. No., or PO Box No.

City, State, ZIP+4®

PS Form 3800, April 2015 PSN 7530-02-000-9047

See Reverse for Instructions

Postmark Here

Stephen P. Stolarski & Christine T. Marchese
112 Hawthorne Drive
Fairfield, CT 06825

7019 0160 0000 7476 5681

U.S. Postal Service™
CERTIFIED MAIL® RECEIPT
Domestic Mail Only

For delivery information, visit our website at www.usps.com®.

OFFICIAL USE

Certified Mail Fee

\$

Extra Services & Fees (check box, add fee as appropriate)

☐ Return Receipt (hardcopy)

\$

☐ Return Receipt (electronic)

\$

☐ Certified Mail Restricted Delivery

\$

☐ Adult Signature Required

\$

☐ Adult Signature Restricted Delivery

\$

Postage

\$

Total Postage and Fees

\$

Sent To

Street and Apt. No., or PO Box No.

City, State, ZIP+4®

PS Form 3800, April 2015 PSN 7530-02-000-9047

See Reverse for Instructions

Postmark Here

Mike Tetreau, First Selectman
Sullivan Independence Hall
Second Floor
725 Old Post Road
Fairfield, CT 06824

7019 0160 0000 7476 5667

U.S. Postal Service™
CERTIFIED MAIL® RECEIPT
Domestic Mail Only

For delivery information, visit our website at www.usps.com®.

OFFICIAL USE

Certified Mail Fee

\$

Extra Services & Fees (check box, add fee as appropriate)

☐ Return Receipt (hardcopy)

\$

☐ Return Receipt (electronic)

\$

☐ Certified Mail Restricted Delivery

\$

☐ Adult Signature Required

\$

☐ Adult Signature Restricted Delivery

\$

Postage

\$

Total Postage and Fees

\$

Sent To

Street and Apt. No., or PO Box No.

City, State, ZIP+4®

PS Form 3800, April 2015 PSN 7530-02-000-9047

See Reverse for Instructions

Postmark Here

Mary R. Skarzynski
136 Hawthorne Drive
Fairfield, CT 06825

7019 0160 0000 7476 5667



VIA US Mail

April 18, 2019

Dear Neighbor:

Beginning the week of April 29th, The United Illuminating Company (UI) will be performing Electric Distribution work at Sacred Heart University, along Route-59, and within the Hawthorne Substation ("Substation") property line. Construction noise may be heard during working hours (M-F 7am-5pm with weekend work from 8am-5pm if necessary). This work should not affect traffic along Route-59. It is expected that construction will be complete in August of this year.

Further, in the coming week UI will be filing a Petition for Declaratory Ruling with the Connecticut Siting Council. In it, UI will be proposing to replace a communications relay to comply with an ISO New England Inc. Directory 1 waiver request submitted by The Connecticut Light and Power Company d/b/a Eversource Energy. During this construction, UI will also replace antiquated controllers in the Substation yard. If approved, construction is expected to begin in the Fall of this year.

Both of these construction activities are being made in an effort to continue electric system improvements and increase electric reliability to better serve customers and prevent outages. No electric outage or interruption to electric service will be necessary during either of these projects.

If you have any questions concerning either of these activities, please contact me at 203-499-3824 at your convenience.

Very truly yours,

Samantha Marone
Manager, Public Outreach



April 26, 2019

The Honorable Michael C. Tetreau
First Selectman
Sullivan Independence Hall
725 Old Post Road
Fairfield, CT 06824

Dear First Selectman Tetreau:

The United Illuminating Company ("UI") filed a Petition for Declaratory Ruling ("Petition") with the Connecticut Siting Council ("Council") on April 25, 2019 for a determination that no Certificate of Environmental Compatibility and Public Need is required for the proposed modifications to UI's Hawthorne Substation. The purpose of the Project is to replace the existing secondary line scheme on the 1720 Line Relay ("Line Relay") between The Connecticut Light and Power Company d/b/a Eversource Energy's ("Eversource") Norwalk Substation and UI's Hawthorne Substation ("Substation") with a high speed protection scheme in order to comply with the Northeast Power Coordinating Council Inc.'s ("NPCC") Implementation Plan for revised NPCC Directory 1 on the ISO New England Inc. ("ISO-NE") bulk power system, which was approved by the NPCC's Reliability Coordinating Committee on September 10, 2015.

Eversource and UI will need to coordinate engineering and construction activities to help complete the entire scope of work in 2019. UI will install the Line Relay from the Substation to a demarcation point, which marks the end of UI's service territory. Eversource will continue installation of the Line Relay from the demarcation point and extend it into its service territory where it will interconnect to Eversource's Norwalk Substation.

A copy of the petition is enclosed for your information. Should you wish to comment or express concerns about the Project, please do so by sending the comments/concerns to:

Attorney Melanie Bachman
Staff Attorney
Connecticut Siting Council
Ten Franklin Square
New Britain, CT 06051
Email: siting.council@ct.gov

Please do not hesitate to also contact Samantha Marone at 203-499-3824 if you have any questions regarding the Petition or the proposed work.

Sincerely,

Amy S. Hicks
Outreach Specialist

Enclosures



VIA US Mail

April 18, 2019

Mike Tetreau, First Selectman
Sullivan Independence Hall, Second Floor
725 Old Post Road
Fairfield, CT 06824

RE: Construction Activities

Dear First Selectman Tetreau:

Beginning the week of April 29th, The United Illuminating Company (UI) will be performing Electric Distribution work at Sacred Heart University, along Route-59, and within the Hawthorne Substation ("Substation") property line. Construction noise may be heard during working hours (M-F 7am-5pm with weekend work from 8am-5pm if necessary). This work should not affect traffic along Route-59. It is expected that construction will be complete in August of this year.

Further, in the coming week UI will be filing a Petition for Declaratory Ruling with the Connecticut Siting Council. In it, UI will be proposing to replace a communications relay to comply with an ISO New England Inc. Directory 1 waiver request submitted by The Connecticut Light and Power Company d/b/a Eversource Energy. During this construction, UI will also replace antiquated controllers in the Substation yard. If approved, construction is expected to begin in the Fall of this year.

Both of these construction activities are being made in an effort to continue electric system improvements and increase electric reliability to better serve customers and prevent outages. No electric outage or interruption to electric service will be necessary during either of these projects.

If you have any questions concerning either of these activities, please contact me at 203-499-3824 at your convenience.

Very truly yours,

Samantha Marone
Manager, Public Outreach



April 26, 2019

To: Federal, State and Local Government Agencies and Officials Referred to in §16-50(b) of the Connecticut General Statutes

Re: Petition of The United Illuminating Company to the Connecticut Siting Council for a Declaratory Ruling of No Substantial Adverse Environmental Effect for the Proposed Modifications to the Existing Hawthorne Substation in the Town of Fairfield, Connecticut

Enclosed is a Petition submitted by The United Illuminating Company ("UI") to the Connecticut Siting Council ("Council") for a Declaratory Ruling that No Substantial Adverse Environmental Effect is required for the proposed replacement of the existing secondary line scheme on the 1720 Line Relay ("Line Relay") between The Connecticut Light and Power Company d/b/a Eversource Energy's ("Eversource") Norwalk Substation and UI's Hawthorne Substation ("Substation") with a high speed protection scheme in order to comply with an ISO New England Inc. ("ISO-NE") Directory 1 waiver request that Eversource submitted. Further, UI would replace antiquated LTC Controllers inside the substation yard during this project.

UI filed this Petition on April 25, 2019.

Section 16-50n(a) of the Connecticut General Statutes provides that each person entitled to receive a copy of an Petition under § 16-50/ may become a party to the proceeding by giving the Council a notice of intent to be a party. The Council's address is: Connecticut Siting Council, 10 Franklin Square, New Britain, CT 06051.

Respectfully submitted,
THE UNITED ILLUMINATING COMPANY

Amy S. Hicks
Outreach Specialist

Enclosure

Attachment D

Implementation Plan for Revised NPCC Directory 1

RCC Approval – September 10th, 2015

The revised NPCC Regional Reliability Reference Directory # 1 Design and Operation of the Bulk Power System, specifies in the performance requirements for Table 1 and Table 3, that for contingencies that involve fault clearing, stability shall be maintained when the simulation is based on fault clearing initiated by the “system A” protection group and also shall be maintained when the simulation is based on fault clearing initiated by the “system B” protection group.

New England has historically performed stability simulations assuming that either system protection group A or B clears the fault. As a result of this revision of the Directory and further specificity regarding performance expectations, a significant number of protection system upgrades are required to meet the clarified requirements of Directory # 1. To allow opportunity for New England to install dual high speed protection systems on all BPS elements, for contingency event #4 in Tables 1 and 3, the faster of either the “system A” protection group or the “system B” protection group may be assumed to operate correctly.

To the extent practicable, New England will develop an implementation schedule that prioritizes facilities associated with critical interface transfer paths. New England will develop and share with NPCC an implementation plan to complete the installations by September 10th, 2025.

New England will provide annual updates on the execution of the implementation plan to the NPCC Task Force on Coordination of Planning (TFCP) to demonstrate that progress is being made to meet the September 10th, 2025 completion date.