

IN RE:

NEW CINGULAR WIRELESS PCS, LLC PETITION
FOR A DECLARATORY RULING, PURSUANT TO
CONNECTICUT GENERAL STATUTES §4-176 AND
§16-50K, FOR THE PROPOSED EXTENSION OF
AN EXISTING WIRELESS
TELECOMMUNICATIONS FACILITY LOCATED
AT 250 MERIDEN WATERBURY TURNPIKE,
SOUTHINGTON, CONNECTICUT.

PETITION NO. 1349

October 10, 2018

RESPONSES TO SITING COUNCIL INTERROGATORIES
SET TWO

Q1. During the field review an observation was noted that no fencing surrounded the facility including the base of the tower. What measures are proposed for the site to ensure security and deter vandalism? (Including alarms, gates, locks, anti-climb fence design, etc.)

A1. *Security has historically not been an issue at this site, as the tower is only accessible by the landowner's private driveway. The landowner's home is adjacent to the tower, and to AT&T's knowledge, there have been no issues with security at this point.*

AT&T's outdoor equipment is located in an existing shelter at grade, the shelter is locked, and the existing tower is equipped with an anti-climbing shield.

Q2. Did AT&T fly a balloon to simulate the height of the proposed facility? If so,

- a) What was the diameter, color and height of the balloon?;
- b) Did the balloon reach its full height?;
- c) Describe the weather conditions during the simulation;
- d) What was the duration of the balloon flight?; and
- e) Did AT&T take photos of the balloon? If so, from what vantage points?

A2. *AT&T conducted two balloon floats to simulate the height of the proposed facility.*

The first took place on September 25, 2018 and two balloons were flown, both red in color and 2.0 feet in diameter. One balloon was flown at 120.0' AGL and the second balloon was flown at 110.0' AGL. Due to heavy rain and winds, the balloons did not reach full height and reached a maximum height of approximately 110.0' AGL. The balloons were flown from approximately 12:45 PM to 3:00 PM. Photos were taken from multiple vantage points around the tower as demonstrated in the photographs included in Exhibit A. During this balloon float, photos were not taken from the New England Trail or Castle Craig because these sites were inaccessible due to inclement weather.

The second balloon float took place on October 1, 2018. There were two floats conducted this day due to malfunction of one balloon during the first float.

During Float 1 on October 1st, two balloons were flown. The first balloon was red in color and 2.0 feet in diameter and flown at an elevation of 110.0' AGL. The second balloon was white in color and 3.5 feet in diameter and was flown at an elevation of 120.0' AGL. Both balloons reached the full height. Weather conditions during this balloon float were overcast with minimal wind. These balloons were flown from approximately 9:15 AM to 11:40 AM. The white balloon lost air at approximately 11:40 AM and needed to be taken down and replaced. Photos, enclosed in Exhibit B, were taken from multiple vantage points around the tower (Photos 1-6) and at Castle Craig (Photo 8).

During Float 2 on October 1st, two balloons were flown. Both balloons were red in color and 2.0 feet in diameter. One was flown at an elevation of 110.0' AGL and the second balloon was flown at 120.0' AGL. Both balloons reached the full height. Weather conditions during this balloon float were overcast with minimal wind. These balloons were flown from approximately 11:45 AM to 1:00 PM. Photos, enclosed in Exhibit B, were taken from multiple vantage points around the tower, along the New England Trail near the existing tower farm on West Peak (Photo 7) and from Hubbard Park (Photo 9). Also enclosed in Exhibit B are photosimulations depicting the view of the proposed facility from surrounding locations.

Please submit any documentation, photos, etc. of the balloon flight relative to interrogatory #2 above.

See Exhibits A & B for photo taken during the balloon floats on September 25, 2018 and October 1, 2018. Also included in Exhibit B are photosimulations depicting the proposed facility from the surrounding area, including the New England Trail, Castle Craig, Hubbard Park, and the tower farm on West Peak.

CERTIFICATE OF SERVICE

I hereby certify that on this day, an original and fifteen (15) copies of the foregoing was sent electronically and delivered to the Connecticut Siting Council via overnight mail.

Dated: October 10, 2018

A handwritten signature in cursive script that reads "Lucia Chiochio". The signature is written in black ink and is positioned above a horizontal line.

Lucia Chiochio

cc: AT&T
SAI
C Squared
Town of Southington

EXHIBIT A



HUBBARD PARK PIZZA

OPEN

24 PK B
\$7.99
WITH
THI





EXHIBIT B

**Prepared For:
AT&T Mobility
Site Name:
SOUTHINGTON ROGUS
Site No.: CT1033
250 Meriden-Waterbury Turnpike
Southington, CT 06489
Hartford County**

Balloon test date: 10/01/18
Between 9:15 AM & 1:00 PM
Weather Conditions:
Partly cloudy throughout with calm winds from
3 mph increasing to 8 mph.

Balloon Information:
White Balloon = 3.5' +/- diameter
Bottom of white Balloon = 120' A.G.L.

Red Balloon = 2' +/- diameter
Bottom of Red Balloon = 110' A.G.L.

Tower height and location are consistent with Rev-0
Certificate Drawings, by Dewberry, dated 05/02/18.

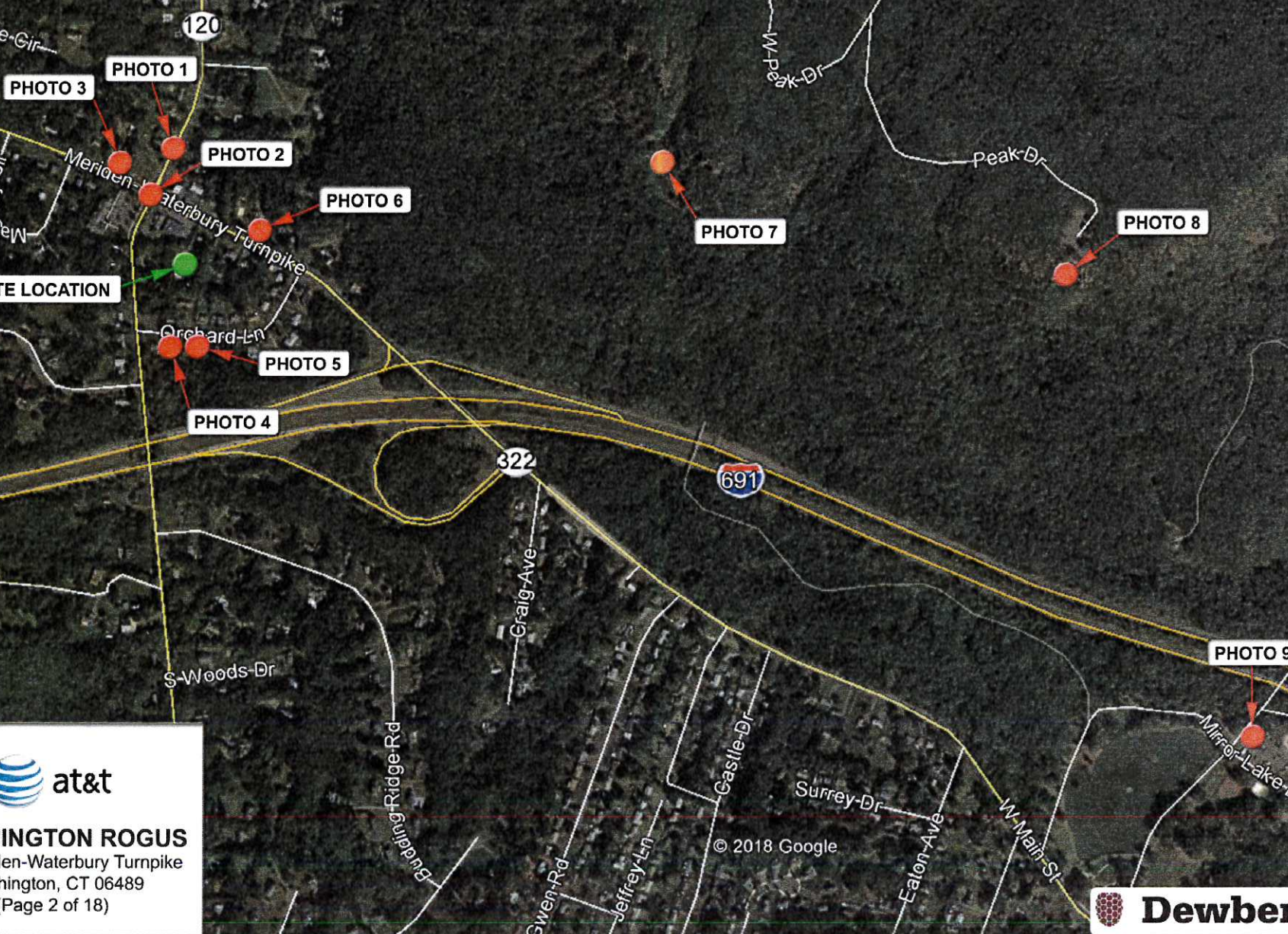
The accuracy of balloon float simulations is entirely dependent upon weather
conditions (such as wind, barometric pressure and temperature)
which cannot be controlled or managed. Tower location is approximate.


For visual reference only. Actual visibility
is dependent upon weather conditions,
season, sunlight, and viewer location.



SOUTHINGTON ROGUS
Site No.: CT1033
DEWBERRY NO. 50065689
(Page 1 of 18)





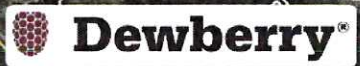


SOUTHINGTON ROGUS

 250 Meriden-Waterbury Turnpike

 Southington, CT 06489

 (Page 2 of 18)



Actual View



SOUTHINGTON ROGUS

Photo 1A

View Facing South
From Meriden Avenue
(Page 3 of 18)

Photo Taken On 10/01/18
Approximate Distance To Tower Location = 570' +/-



Proposed View

Proposed AT&T RRU's (Typ.-6 Total)
& Surge Arrestor (Typ.-1 Total)

Proposed AT&T Antennas (Typ.-3 Total)

Proposed 40' Tall Lattice Tower Extension




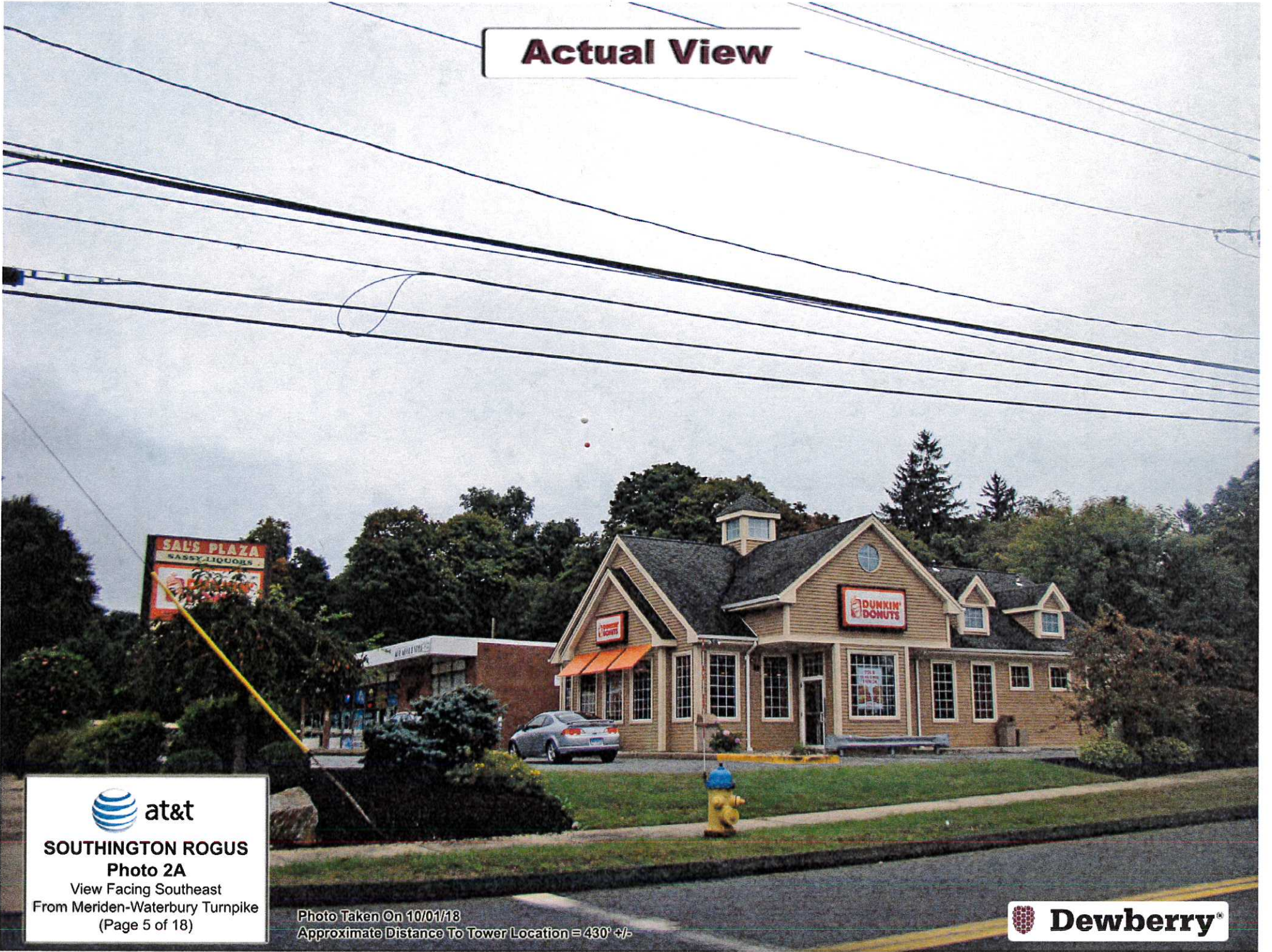

SOUTHINGTON ROGUS
Photo 1B
View Facing South
From Meriden Avenue
(Page 4 of 18)

Photo Taken On 10/01/18
Approximate Distance To Tower Location = 570' +/-



Actual View





SOUTHINGTON ROGUS
Photo 2A
View Facing Southeast
From Meriden-Waterbury Turnpike
(Page 5 of 18)

Photo Taken On 10/01/18
Approximate Distance To Tower Location = 430' +/-



Proposed View

Proposed AT&T Antennas (Typ.-3 Total)

Proposed AT&T RRU's (Typ.-6 Total)
& Surge Arrestor (Typ.-1 Total)

Proposed 40' Tall Lattice Tower Extension



SOUTHINGTON ROGUS

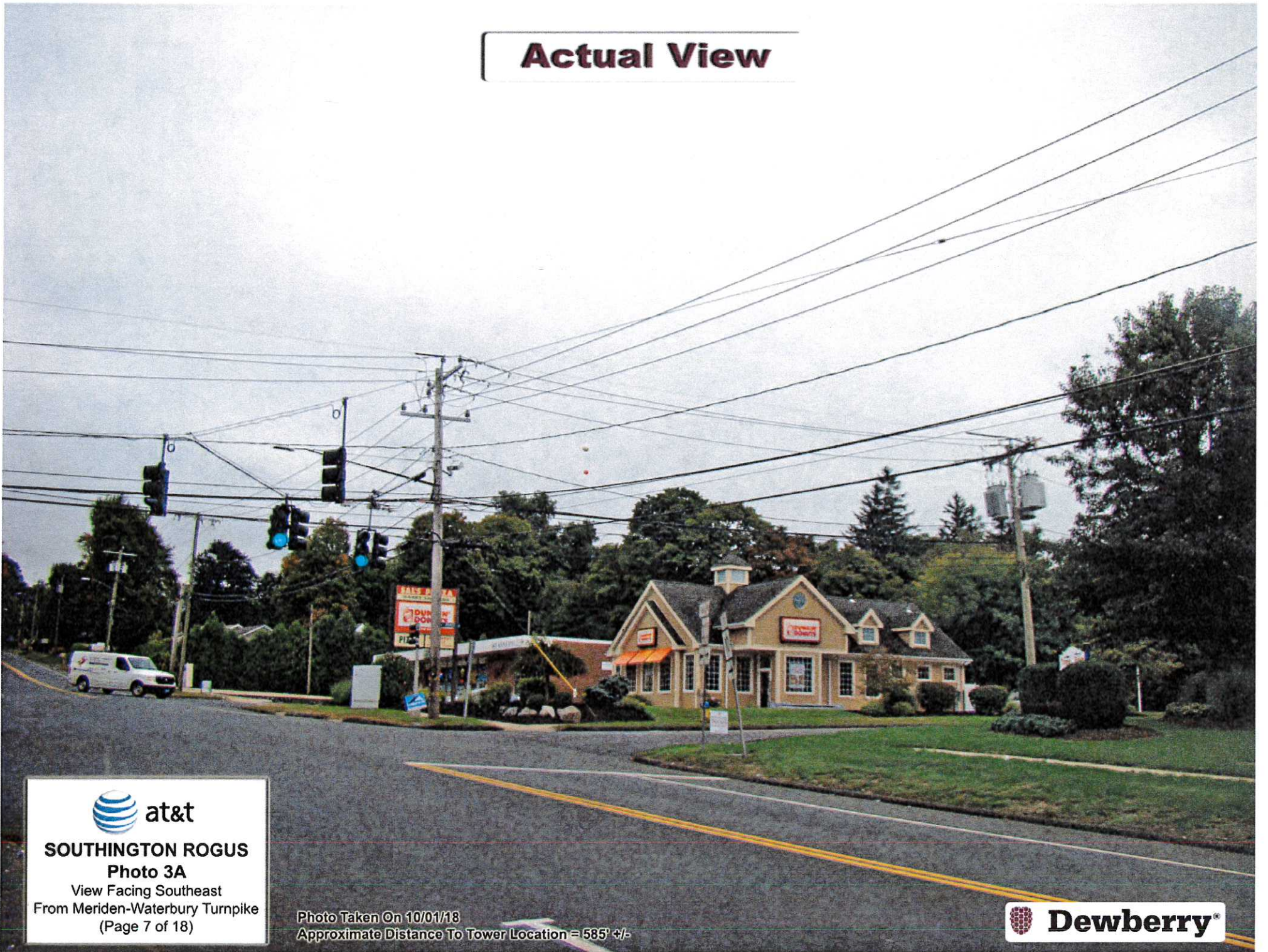
Photo 2B

View Facing Southeast
From Meriden-Waterbury Turnpike
(Page 6 of 18)

Photo Taken On 10/01/18
Approximate Distance To Tower Location = 430' +/-



Actual View




 **at&t**
SOUTHINGTON ROGUS
Photo 3A
View Facing Southeast
From Meriden-Waterbury Turnpike
(Page 7 of 18)

Photo Taken On 10/01/18
Approximate Distance To Tower Location = 585' +/-

 **Dewberry®**

Proposed View

Proposed AT&T Antennas (Typ.-3 Total)

Proposed AT&T RRU's (Typ.-6 Total)
& Surge Arrestor (Typ.-1 Total)

Proposed 40' Tall Lattice Tower Extension



SOUTHINGTON ROGUS

Photo 3B

View Facing Southeast
From Meriden-Waterbury Turnpike
(Page 8 of 18)

Photo Taken On 10/01/18
Approximate Distance To Tower Location = 585' +/-



Actual View



SOUTHINGTON ROGUS

Photo 4A

View Facing North
From Orchard Lane
(Page 9 of 18)

Photo Taken On 10/01/13
Approximate Distance To Tower Location = 385' +/-



Proposed View

Proposed AT&T RRU's (Typ.-6 Total)
& Surge Arrestor (Typ.-1 Total)

Proposed AT&T Antennas (Typ.-3 Total)

Proposed 40' Tall Lattice Tower Extension



SOUTHINGTON ROGUS

Photo 4B

View Facing North
From Orchard Lane
(Page 10 of 18)

Photo Taken On 10/01/18
Approximate Distance To Tower Location = 385' +/-



Actual View



SOUTHINGTON ROGUS

Photo 5A

View Facing North
From Orchard Lane
(Page 11 of 18)

Photo Taken On 10/01/18
Approximate Distance To Tower Location = 380' +/-



Proposed View

Proposed AT&T Antennas (Typ.-3 Total)

Proposed AT&T RRU's (Typ.-6 Total)
& Surge Arrestor (Typ.-1 Total)

Proposed 40' Tall Lattice Tower Extension



SOUTHINGTON ROGUS

Photo 5B

View Facing North
From Orchard Lane
(Page 12 of 18)

Photo Taken On 10/01/18
Approximate Distance To Tower Location = 380' +/-



Actual View



SOUTHINGTON ROGUS

Photo 6A

View Facing Southwest

From Meriden-Waterbury Turnpike
(Page 13 of 18)

Photo Taken On 10/01/18
Approximate Distance To Tower Location = 395' +/-



Proposed View

Proposed AT&T Antennas (Typ.-3 Total)

Proposed AT&T RRU's (Typ.-6 Total)
& Surge Arrestor (Typ.-1 Total)

Proposed 40' Tall Lattice Tower Extension



SOUTHINGTON ROGUS

Photo 6B

View Facing Southwest

From Meriden-Waterbury Turnpike
(Page 14 of 18)

Photo Taken On 10/01/18
Approximate Distance To Tower Location = 395' +/-



Actual View



SOUTHINGTON ROGUS

Photo 7A

View Facing Southwest
From Tower Farm On West Peak
(Page 15 of 18)

Photo Taken On 10/01/18
Approximate Distance To Tower Location = 0.53 Miles +/-



Proposed View

Proposed AT&T Antennas (Typ.-3 Total)

Proposed AT&T RRU's (Typ.-6 Total)
& Surge Arrestor (Typ.-1 Total)

Proposed 40' Tall Lattice Tower Extension



SOUTHINGTON ROGUS

Photo 7B

View Facing Southwest
From Tower Farm On West Peak
(Page 16 of 18)

Photo Taken On 10/01/18
Approximate Distance To Tower Location = 0.53 Miles +/-



Actual View

Existing Lattice Tower & Proposed Tower
Extension Are Not Visible From This Location



SOUTHINGTON ROGUS

Photo 8

View Facing West
From Castle Craig
(Page 17 of 18)

Photo Taken On 10/01/18
Approximate Distance To Tower Location = 0.90 Miles +/-



Actual View

Existing Lattice Tower & Proposed Tower
Extension Are Not Visible From This Location



SOUTHINGTON ROGUS

Photo 9

View Facing Northwest
From Hubbard Park
(Page 18 of 18)

Photo Taken On 10/01/18
Approximate Distance To Tower Location = 1.17 Miles +/-

