



Exhibit O

**NDDB Map**

**Natural Diversity Data Base  
Areas**

**FARMINGTON, CT**  
December 2017

-  State and Federal Listed Species & Significant Natural Communities
-  Town Boundary

NOTE: This map shows general locations of State and Federal Listed Species and Significant Natural Communities. Information on listed species is collected and compiled by the Natural Diversity Data Base (NDDB) from a number of data sources. Exact locations of species have been buffered to produce the general locations. Exact locations of species and communities occur somewhere in the shaded areas, not necessarily in the center. A new mapping format is being employed that more accurately models important riparian and aquatic areas and eliminates the need for the upstream/downstream searches required in previous versions.

This map is intended for use as a preliminary screening tool for conducting a Natural Diversity Data Base Review Request. To use the map, locate the project boundaries and any additional affected areas. If the project is within a shaded area there may be a potential conflict with a listed species. For more information, complete a Request for Natural Diversity Data Base State Listed Species Review form (DEP-APP-007), and submit it to the NDDB along with the required maps and information. More detailed instructions are provided with the request form on our website.

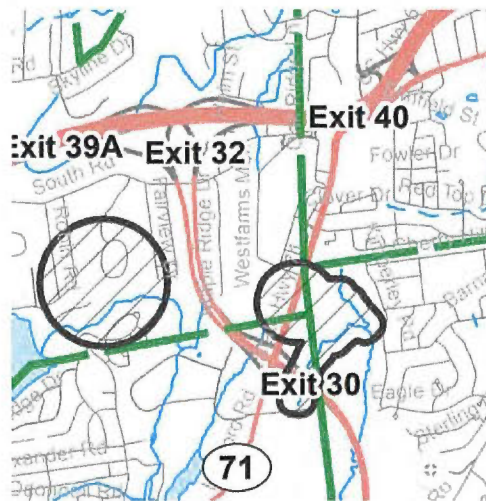
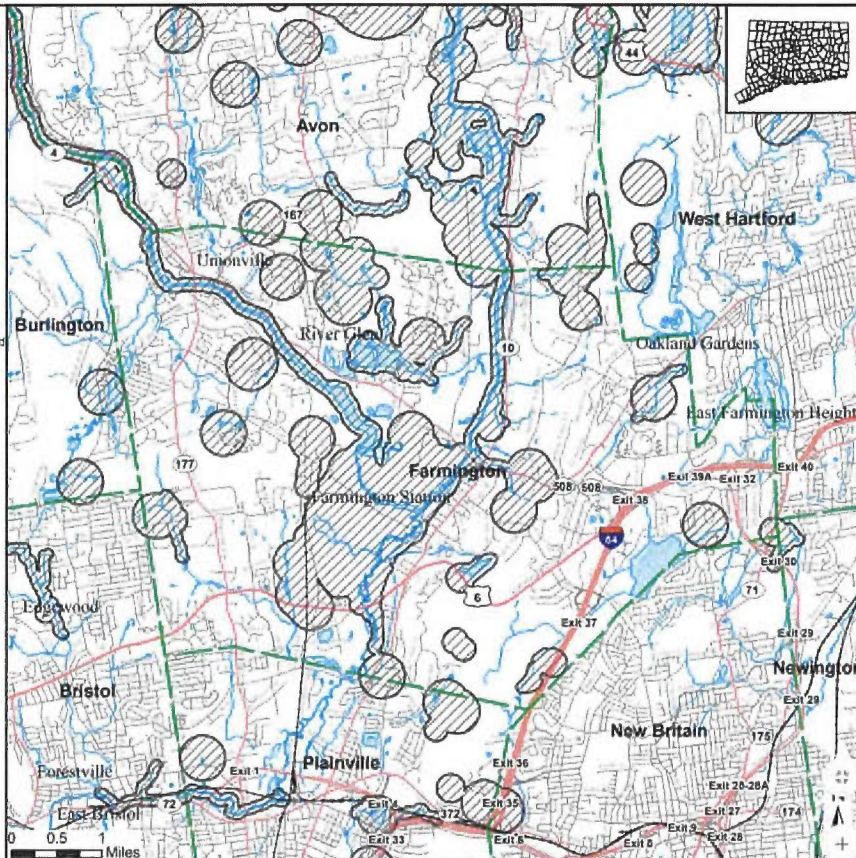
[www.ct.gov/deep/nddbrequest](http://www.ct.gov/deep/nddbrequest)

Use the CTECO Interactive Map Viewers at [www.cteco.uconn.edu](http://www.cteco.uconn.edu) to more precisely search for and locate a site and to view aerial imagery with NDDB Areas

QUESTIONS: Department of Energy and Environmental Protection (DEEP)  
79 Elm St., Hartford CT 06106  
Phone (860) 424-3011



Connecticut Department of  
Energy & Environmental Protection  
Bureau of Natural Resources  
Wildlife Division



NDDB Overlay on Farmington GIS:

