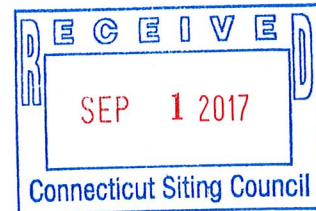


Lee D. Hoffman
90 State House Square
Hartford, CT 06103-3702
p 860 424 4315
f 860 424 4370
lhoffman@pullcom.com
www.pullcom.com

September 1, 2017

VIA HAND DELIVERY AND ELECTRONIC MAIL

Melanie Bachman
Acting Executive Director
Connecticut Siting Council
10 Franklin Square
New Britain, CT 06051



Re: Petition of DWW Solar II, LLC for a Declaratory Ruling that no Certificate of Environmental Compatibility and Public Need is Required for a 26.4 Megawatt AC Solar Photovoltaic Electric Generating Facility In Simsbury, Connecticut

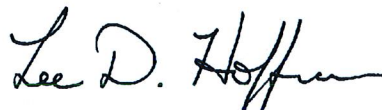
Dear Ms. Bachman:

I am writing on behalf of my client, DWW Solar II, LLC, (“DWW”) in connection with the above-referenced Petition. Pursuant to paragraph 7 of the Council’s August 4, 2017 Memorandum, DWW hereby submits a proposed driving route for the field review to be held on September 12, 2017. The initial parking area is denoted with a star, and eight points of interest/stopping points are identified on the map. Please note that the numbers delineate only approximate locations for stopping. It is not DWW’s intent to take cars off road or through private property. All cars will remain on public streets for the duration of the field review.

DWW is also enclosing a disc containing aerial drone footage of the project site. Map overlays are included intermittently in the video so that the viewer may ascertain the location of the drone. DWW respectfully requests that this video be included as part of the record for this petition.

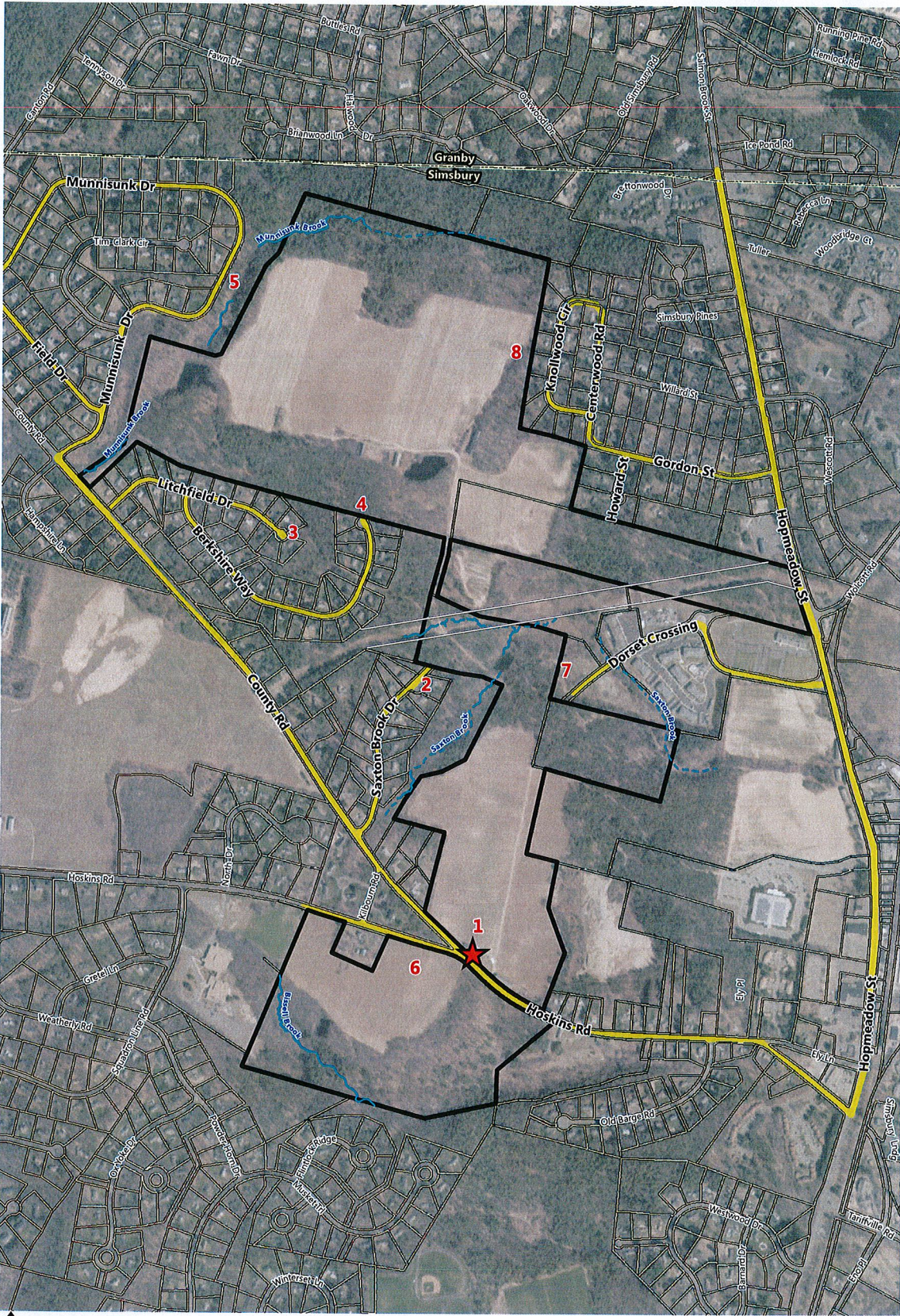
If you have any questions concerning this submittal, please contact me at your convenience. I certify that copies of this submittal have been made to all parties on the Petition’s service list.

Sincerely,

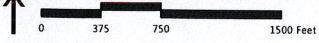


Lee D. Hoffman

Enclosures



\\HUB\DATA_ehcsim\42556_001_GIS\Project\Map\2017\Proposed Parking Locations_DrivingRoute.mxd



- | | | | | | |
|--|-------------------------|--|-------------------------|--|--------------------|
| | Property Boundary | | Stream | | Parking Location |
| | Adjacent Parcels | | Approximate Stream | | Driving Route Stop |
| | Town Boundary | | Potential Driving Route | | |
| | Existing Eversource ROW | | | | |

Tobacco Valley Solar

Simsbury, Connecticut

CSC Field Walk Parking Location & Driving Routes

Source: VHB, CTDEEP, ESRI