



To: Susan Moberg, PWS

Date: January 14, 2019

Memorandum

Project #: 42256.40

From: Jeffrey C. Peterson, CPSS

Re: Site Specific Soil Map Report
Tobacco Valley Solar Project
Simsbury, Connecticut

Introduction

Field work for a Site Specific Soil Map (S3M) was completed for the three farm fields within the Tobacco Valley Solar Project Site. A S3M is made at scales that allow detailed information about soil properties and characteristics to be accurately mapped and presented. The existing soil survey for the State of Connecticut was prepared to be used at a scale of 1 inch equals 1000 feet (1:12,000). The S3M prepared for this Project was produced at a scale of 1 inch equals 200 feet (1:2,400). The goal of this map is to document baseline conditions of the farmland soils resources prior to construction of the solar facility. The method used to prepare this survey generally follows the Standards and Procedures for Site Specific Soil Mapping in Rhode Island¹, but has been modified to map soil edaphic factors rather than constraints to development. For example, whereas the S3M standards call for depth to seasonal high-water table (SHWT) to be part of the mapping unit, this factor is generally not a limitation in any of the Project Area farm fields². Instead of recording SHWT a standard USDA drainage class was assigned based on the physical properties of the soil within the map unit and depth to SHWT.

A topographic site plan was used to prepare an initial set of soil-landscape delineations used to predict the spatial distribution of similar soils. A series of soil observations were made within these delineations to collect soil profile descriptions. Each observation hole was dug to a depth of between 2.5 and four feet with a tile spade and materials below the bottom of the observation hole were sampled using a hand auger. Each observation point was located with a handheld GPS unit (Trimble Geo 7 series) and plotted on the plans. Data from the soil observations were used to adjust field boundaries for the map units and identify units of similar soil composition.

Data collected from 145 observation pits included: topsoil thickness, texture, color, consistence, and percent coarse fragments. These data were coded for a connotative soil legend that could be correlated with the results of soil tests from samples collected in the field to provide an assessment of soil fertility and tilth. These same data were collected from subsurface horizons and layers to help assign a drainage class. The surficial geological deposit type, landscape position, and slope class was assigned to each observation pit.

A connotative soil legend was used to name individual map units. In a connotative legend, each number or letter in the naming sequence provides specific information concerning the most prevalent soil type associated with the map unit. This legend is placed on each plan sheet to provide an efficient method of communicating soil data to the user. The data collected at each observation pit were also geocoded for each observation point so that specific data for

¹Final Draft October 2007 University of Rhode Island College of the Environment and Life Sciences Department of Natural Resources Science Cooperative Extension, Kingston, RI

² The SHWT generally was found to be greater than four feet from the soil surface, though in some instances compacted or frozen soils in depressions puddled runoff.

100 Great Meadow Road
Suite 200

Wethersfield, CT 06109-2377
P 860.807.4300

each observation, such as topsoil thickness or texture can be queried. Initial observations of soil compaction were made using a Dicky-John Soil Compaction Meter, but this work was suspended after soils froze.

A set of 17 soil samples representative of the range of topsoil conditions present within the existing farmland that was mapped was collected for laboratory analysis. These samples have been prepared for analytical testing by the UMass Cooperative Extension Soil Lab.

Map Preparers

This S3M was prepared by Jeffrey C. Peterson, CPSS and Patricia Brousseau, Soil Scientist. Maggie Murphy, Environmental Scientist assisted in reading, recording, and coding data and locating field points with GPS. Fieldwork was conducted between November 8, 2018 and December 18, 2018.

General Site Description

The surficial geology of the three farm fields are all primarily glacial outwash deposits set on a high meltwater terrace (elevations within the fields) above the Farmington River and its floodplain. Elevations within the mapped fields generally range between 270 and 280 feet above NAVD 88 with the proximate Farmington River floodplain at elevation ~160 feet NAVD 88. Some of these outwash deposits may overlie glaciolacustral deposits at great depth, but such deposits were not encountered during our soil investigations. The soil materials in these outwash deposits generally consisted of coarse sand, loamy coarse sand, or sand and their gravelly or cobbly analogs.

Across most of the Project Area farmland the glacial outwash is mantled by a windblown deposit of sandy loam or fine sandy loam. The thickness of this mantle is critical to the quality of the farmland as much of the soil water holding capacity and fertility is moderated by the condition of this layer. In excessively drain soils this mantle is thin or absent and soils are droughty and relatively infertile. Somewhat excessively drained map units typically have a layer of topsoil and subsoil with textures of sandy loam or fine sandy loam with a cumulative thickness generally between one and two feet. When these wind-deposited mantles are greater than two feet thick, the soil is classified as well drained. Excessively drained soils observed on site belong to or are similar to the Hinckley or Windsor series. These series do not have a cambic horizon due to the presence of sandy textures near the soil surface. Soils in the Hinckley series are gravelly in surface and subsurface textures. There are smaller soil polygons, apparently formed in paraglacial dune deposits that belong to the Windsor series. Somewhat excessively drained soils belong or are similar to the Merrimac series. Many of the foot slopes and lower concave toe slopes accumulate eroded topsoil. Where these accumulations are thick enough the soil is classified as well drained. Soils in these bottoms are similar to the Agawam series and represent the best farmland soils within the Project Area.

Our soil investigation also found areas where soils were regraded or filled. These deposits are classified as human transported materials or HTM. Soils around many field edges and along farm roads and around existing former farm buildings have been filled or graded.

Soils in two small areas, one near the southeastern corner of the northern field and one in the central part of the middle field, appear to be shallow to bedrock or underlying till. The presence of angular Triassic-age sedimentary rock fragments ripped up during tillage provides evidence of the shallow depth to bedrock.

All of the soil series named in the previous discussion have parent materials derived from acid crystalline rock. The NRCS soil survey included mapping units in the northern field with parent material derived from Triassic-aged sedimentary rock. These areas were mapped as Manchester gravelly sandy loam, a red analog to the Hinckley series. We found the influence of this red parent material in every farm field, but never found it predominant.

When we started in late November in the northern field, we found approximately half of the soil observation points had a compact "plow pan" within 15 inches of the soil surface. In a farm field a plow pan, or traffic pan, refers to a compact layer of soil that develops below the tillage depth. Plow pans were identified as a layer within or just below the topsoil where the penetration pressure from the compaction meter exceeded 200 - 300 psi. These layers are considered root restricting. A better evaluation of this condition may be made in the spring after the ground thaws.

Map Completion

Interim maps have been prepared for the three fields using a connotative legend. Once the geocoded data is available these units will be adjusted and the composition of map units described. These geocoded data will also be used to prepare map units analogous to those in the NRCS soil map legend for Connecticut to identify the spatial extent of Prime Farmland Soils prior to the start of construction.

Samples of topsoil have been collected from a wide range of textures and colors encountered during the field work. When test results are returned we will attempt to correlate the existing farmland nutrient status to specific map units so that amendments can be added in appropriate amounts during seed bed preparation or with hydroseed and mulch. If topsoil color/texture is found to correlate to the soil organic matter (SOM) content a map will be produced to depict areas where SOM is suspected to be deficient, representing suspected degraded farmland with poor soil health not related to the Project.

Soils within the farm fields have drainage classes that range from excessively drained to moderately well drained. If hydroseeders are used for permanent seed application, the seed mix can be adjusted to match the soil conditions in the application area. Drought tolerant species may be favored in excessively drained soil units and cool seasons grasses in well drained sites.

Test Pit A1

Ap	0 to 12 inches	Dark yellowish brown (10YR 3/4) gravelly coarse sandy loam, massive, friable, abrupt smooth boundary.
2C1	12 to 18 inches	Dark yellowish brown (10YR 4/6) coarse sand, single grain, loose, clear smooth boundary.
2C2	18 to 36 inches	Light yellowish brown (10YR 6/4) coarse sand, single grain, loose.

Test Pit A2

Ap	0 to 15 inches	Dark brown (10YR 3/3) sandy loam, massive, friable, abrupt smooth boundary.
Bw	15 to 26 inches	Dark yellowish brown (10YR 4/6) sandy loam, massive, friable, clear smooth boundary.
2C1	26 to 38 inches	Yellowish brown (10YR 4/6) sand, single grain, loose.

Test Pit A3

Ap	0 to 20 inches	Dark yellowish brown (10YR 3/4) fine sandy loam, massive, friable, abrupt smooth boundary.
Bw	20 to 31 inches	Yellowish brown (10YR 5/6) loamy sand, massive, friable, clear smooth boundary.
2C1	31 to 48 inches	Dark yellowish brown (10YR 4/4) gravelly loamy coarse sand, single grain, loose.

Test Pit A4

Ap	0 to 23 inches	Dark brown (10YR 3/3) sandy loam, massive, friable, abrupt smooth boundary.
Bw	23 to 38 inches	Dark yellowish brown (10YR 4/6) sandy loam, massive, friable, clear smooth boundary.
2C1	38 to 46 inches	Dark yellowish brown (10YR 4/6) gravelly sand, single grain, loose.

Test Pit A5

Ap	0 to 11 inches	Dark yellowish brown (10YR 4/3) gravelly coarse sandy loam, massive, friable, abrupt smooth boundary.
2C1	11 to 15 inches	Dark yellowish brown (10YR 4/6) coarse sand, massive, friable, clear smooth boundary.
2C2	15 to 25 inches	Yellowish brown (10YR 5/4) gravelly coarse sand, single grain, loose.

Test Pit A6

Ap	0 to 13 inches	Dark brown (10YR 3/3) sandy loam, massive, friable, abrupt smooth boundary.
Bw	13 to 22 inches	Dark yellowish brown (10YR 4/6) sandy loam, massive, friable, clear smooth boundary.
2C1	22 to 29+ inches	Yellowish brown (10YR 5/6) gravelly coarse sand, single grain, loose.

Test Pit A7

Ap	0 to 22 inches	Dark brown (10YR 3/3) loamy sand, massive, friable, abrupt smooth boundary.
Bw	22 to 28 inches	Dark yellowish brown (10YR 4/6) loamy sand, massive, friable, clear smooth boundary.
BC	28 to 38 inches	Strong brown (7.5YR 4/6) loamy sand, single grain, loose.
2C1	38 to 42+inches	Brown (7.5YR 4/4) Sand, single grain, loose.

Test Pit A8

Ap1	0 to 13 inches	Dark yellowish brown (10YR 3/4) sandy loam, massive, friable, abrupt smooth boundary.
Ap2	13 to 19 inches	Dark yellowish brown (10YR 3/4) sandy loam, massive, friable, clear smooth boundary.
Ap3	19 to 26 inches	Dark brown (10YR 3/3) fine sandy loam, few concentrations (7.5YR 4/4) massive, friable.
Ab	26 to 39 inches	Dark brown (7.5YR 3/3) sandy loam, massive, friable.
Bw	39 to 44+inches	Brown (7.5YR 4/4) sandy loam, massive, friable.

Test Pit A9

Ap1	0 to 13 inches	Dark brown (10YR 3/3) loamy sand, massive, friable, abrupt smooth boundary.
Bw	13 to 18 inches	Reddish brown (5YR 4/4) loamy sand, massive, friable, clear smooth boundary.
BC	18 to 24 inches	Strong brown (7.5YR 4/6) sand, single grain, loose, clear smooth boundary.
C	24 to 40 inches	Brown (7.5YR 4/4) coarse sand, single grain, loose.

Test Pit A10

Ap	0 to 12 inches	Dark yellowish brown (10YR 3/4) sandy loam, massive, friable, abrupt smooth boundary.
Bw	12 to 17 inches	Dark yellowish brown (10YR 4/4) loamy sand, massive, friable, clear smooth boundary.
2C1	17 to 19 inches	Brown (7.5YR 4/4) Sand, single grain, loose.
2C2	19 to 21 inches	Brown (10YR 5/3) Sand, single grain, loose.
3C3	21 to 36+inches	Brown (7.5YR 4/4) gravelly coarse sand, single grain, loose.

Test Pit A11

Ap	0 to 18 inches	Dark brown (10YR 3/3) loamy sand, massive, friable, abrupt smooth boundary.
BC	18 to 22 inches	Brown (7.5YR 4/4) sand, single grain, loose.
2C1	22 to 40 inches	Reddish brown (5YR 4/4) sand, single grain, loose.

Test Pit A12

Ap	0 to 12 inches	Brown (10YR 4/3) sandy loam, massive, friable, abrupt smooth boundary.
Bw	12 to 16 inches	Dark yellowish brown (10YR 4/6) loamy sand, massive, friable, clear smooth boundary.
2C1	16 to 23 inches	Yellowish brown (10YR 5/4) gravelly sand, single grain, loose.
2C2	23 to 35+inches	Brown (7.5YR 5/3) gravelly sand, single grain, loose.

Test Pit A13

Ap	0 to 8 inches	Dark yellowish brown (10YR 3/4) coarse sandy loam, massive, friable, abrupt smooth boundary.
C	8 to 15+ inches	Reddish Brown (5YR 4/4) Very cobble coarse sand, massive, friable, clear smooth boundary.

Test Pit A14

Ap	0 to 10 inches	Dark yellowish brown (10YR 3/4) sandy loam, massive, friable, abrupt smooth boundary.
Bw	10 to 16 inches	Dark yellowish brown (10YR 4/6) loamy sand, massive, friable, clear smooth boundary.
2C1	16 to 23 inches	(7.5YR 4/6) sand, single grain, loose.
2C2	23 to 26+inches	Brown (7.5YR 5/3) gravelly sand, single grain, loose.

Test Pit A15

Ap	0 to 13 inches	Dark yellowish brown (10YR 3/4) sandy loam, massive, friable, abrupt smooth boundary.
Bw	13 to 18 inches	Dark yellowish brown (10YR 4/6) loamy sand, massive, friable, many medium roots, clear smooth boundary.
2C	18 to 40 inches	Dark gray (7.5YR 4/4) gravelly coarse sand, single grain, loose.

<200 PSI

Test pit A16

Ap	0 to 15 inches	Dark yellowish brown (10YR 3/4) loamy sand, massive, friable, abrupt smooth boundary.
Bw	15 to 26 inches	Dark yellowish brown (10YR 4/6) loamy sand, massive, friable, clear smooth boundary.
2C1	26 to 30 inches	Dark gray (7.5YR 4/4) gravelly coarse sand, single grain, loose, clear smooth boundary.
2C2	30 to 40 inches	Brown (10YR 5/3) gravelly coarse sand, single grain, loose.

Test pit A17

Ap	0 to 11 inches	Dark brown (10YR 3/3) loamy fine sand, massive, friable, abrupt smooth boundary.
Bw	11 to 16 inches	Yellowish brown (10YR 5/6) loamy fine sand, massive, friable, clear smooth boundary.
2C1	16 to 26 inches	Grayish brown (10YR 5/2) very fine sandy loam, massive, friable.
2C2	26 to 28 inches	Pale brown (10YR 6/3) fine sand, single grain, loose.

Test pit A18

Ap	0 to 11 inches	Brown (10YR 4/3) sandy loam, massive, friable, abrupt smooth boundary.
Bw	11 to 16 inches	Yellowish brown (10YR 5/6) sandy loam, massive, friable, clear smooth boundary.
BC	16 to 25 inches	Dark yellowish brown (10YR 4/6) loamy sand, massive, friable.
2C1	25 to 38 inches	Brown (7.5YR 5/4) sand, single grain, loose.

Test pit A20

Ap	0 to 11 inches	Dark brown (10YR 3/3) sandy loam, massive, friable, abrupt smooth boundary.
Bw	11 to 17 inches	Dark yellowish brown (10YR 4/4) sandy loam, massive, friable, clear smooth boundary.
2C1	17 to 31 inches	Brown (7.5YR 5/4) coarse sand, single grain, loose.

Test pit A21

Ap	0 to 9 inches	Dark yellowish brown (10YR 4/4) sandy loam, massive, friable, clear smooth boundary.
AB1	9 to 16 inches	Dark yellowish brown (10YR 4/4) sandy loam, massive, firm (plow pan) clear smooth boundary.
AB2	16 to 39	Dark yellowish brown (10YR 4/4) sandy loam, massive, friable (slope wash).

Test pit A22

Ap	0 to 7 inches	Very dark grayish brown (10YR 3/2) sandy loam, massive, friable, abrupt smooth boundary.
Bw	7 to 16 inches	Yellowish brown (10YR 5/4) loamy sand, massive, friable, clear smooth boundary.
2C1	16 to 25 inches	Brown (7.5YR 4/4) gravelly sand, single grain, loose.
2C2	25 to 37 inches	Yellowish brown (7.5YR 5/4) very gravelly coarse sand, single grain loose

Test pit A23

Ap	0 to 10 inches	Dark brown (10YR 3/3) sandy loam, massive, friable, abrupt smooth boundary.
Bw	10 to 16 inches	Dark yellowish brown (10YR 4/4) sandy loam, massive, friable, clear smooth boundary.
2C1	16 to 27 inches	Brown (7.5YR 5/4) sand, single grain, loose, clear smooth boundary.
2C2	27 to 39 inches	Light brown (7.5YR 6/4) sand, single grain, loose.

Test pit A24

Ap	0 to 13 inches	Dark brown (10YR 3/3) loamy sand, massive, friable, abrupt smooth boundary.
2C1	13 to 17 inches	Brown (7.5YR 4/4) sand, single grain, loose, clear smooth boundary.
3C2	17 to 22 inches	Brown (7.5YR 4/4) extremely gravelly sand, single grain, loose, clear smooth boundary.
3C3	22 to 36 inches	Brown (7.5YR 5/4) extremely gravelly coarse sand, single grain, loose.

Test pit A25

Ap	0 to 15 inches	Very dark grayish brown (10YR 3/2) sandy loam, massive, friable, abrupt smooth boundary.
Bw	15 to 19 inches	Dark yellowish brown (10YR 4/6) sandy loam, massive, friable, clear smooth boundary.
2C1	19 to 33 inches	Brown (7.5YR 5/4) very gravelly coarse sand, single grain, loose.

Test pit A26

Ap	0 to 16 inches	Dark brown (10YR 3/3) sandy loam, massive, friable, abrupt smooth boundary.
Bw	16 to 25 inches	Brown (7.5YR 4/4) fine sandy loam, massive, friable, clear smooth boundary.
2C1	25 to 39 inches	Reddish brown (5YR 5/3) loamy very fine sand, massive, friable.

Test pit A27

Ap	0 to 17 inches	Dark brown (10YR 3/3) sandy loam, massive, friable, abrupt smooth boundary.
Bw	17 to 29 inches	Brown (10YR 5/6) sandy loam, massive, friable, clear smooth boundary.
2C1	29 to 38 inches	Brown (7.5YR 4/4) sand, single grain, loose.

Test pit A28

Ap	0 to 16 inches	Dark yellowish brown (10YR 3/4) sandy loam, massive, friable, abrupt smooth boundary.
Bw	16 to 25 inches	Brown (7.5YR 4/4) sandy loam, massive, friable, clear smooth boundary.
2C1	25 to 39 inches	Brown (7.5YR 4/4) gravelly sand, single grain, loose.

Test pit A29

Ap	0 to 8 inches	Dark brown (10YR 3/3) sandy loam, massive, friable, abrupt smooth boundary.
Bw	8 to 14 inches	Brown (7.5YR 4/4) loamy sand, massive, friable, clear smooth boundary.
2C1	14 to 28 inches	Reddish brown (5YR 4/4) very cobbly coarse sand, massive, friable.

Test pit A30

Ap	0 to 11 inches	Dark yellowish brown (10YR 3/4) sandy loam, massive, friable, abrupt smooth boundary.
BC	11 to 28 inches	Yellowish brown (10YR 5/4) fine sand, massive, friable, clear smooth boundary.
C	28 to 35 inches	Brown (7.5YR 5/4) sand, single grain, loose.

Test pit A31

Ap	0 to 8 inches	Brown (10YR 4/3) cobbly sandy loam, massive, friable, abrupt smooth boundary.
2C1	8 to 12 inches	Brown (7.5YR 4/4) very cobbly loamy sand, single grain, loose, clear smooth boundary.
3C2	12 to 18 inches	Reddish brown (5YR 5/4) loamy fine sand, massive, friable.
4Cd3	18 to 25	Reddish brown (2.5YR 4/4) fine sandy loam, massive, very firm. (weathered bedrock?)

Test pit A32

Ap	0 to 7 inches	Brown (10YR 4/3) cobbly sandy loam, massive, friable, abrupt smooth boundary.
Bw	7 to 17 inches	Dark yellowish brown (10YR 4/4) sandy loam, massive, friable, clear smooth boundary.
2C1	17 to 21 inches	Yellowish brown (10YR 5/4) sand, single grain, loose, clear smooth boundary.
3C2	21 to 32	Light brown (7.5YR 6/4) very cobbly sand, single grain, loose.

Test pit A33

Ap	0 to 8 inches	Brown (10YR 4/3) cobbly sandy loam, massive, friable, abrupt smooth boundary.
2CR	8 to 10 inches	Reddish brown (2.5YR 4/3) sandy loam, massive to medium platy structure, firm, clear smooth boundary.
R	10 inches	Weathered red sand stone/silt stone

Test pit A33A

Ap	0 to 8 inches	Brown (10YR 4/3) cobbly sandy loam, massive, friable, abrupt smooth boundary.
Bw	7 to 12 inches	Dark yellowish brown (10YR 4/4) sandy loam, massive, friable, clear smooth boundary.
2C1	12 to 17 inches	Reddish brown (5YR 5/4) loamy very fine sand, massive, friable, abrupt smooth boundary.
3Cd2	17 to 30 inches	Reddish brown (5YR 5/4) loamy very fine sand, massive, firm, abrupt smooth boundary.
R	30 inches	Weathered red sand stone/silt stone.

Test pit A34

Ap	0 to 10 inches	Brown (10YR 4/3) cobbly sandy loam, massive, friable, abrupt smooth boundary.
Bw	10 to 19 inches	Yellowish brown (10YR 5/4) sandy loam, massive, friable, clear smooth boundary.
2C1	19 to 29 inches	Light brown (7.5YR 6/4) coarse sand, single grain, loose, clear smooth boundary.
3C2	29 to 38 inches	Brown (7.5YR 5/4) sand, single grain, loose.

Test pit A35

Ap	0 to 7 inches	Brown (10YR 4/3) sandy loam, massive, friable, abrupt smooth boundary.
Bw	7 to 15 inches	Dark yellowish brown (10YR 4/4) loamy sand, massive, friable, clear smooth boundary.
2C1	15 to 40 inches	Yellowish brown (7.5YR 5/4) cobbly coarse sand, single grain, loose.

Test pit A36

Ap	0 to 12 inches	Dark brown (10YR 3/3) loamy sand, massive, friable, abrupt smooth boundary.
C1	12 to 24 inches	Brown (7.5YR 4/3) sand, single grain, loose, clear smooth boundary.
2C2	24 to 37 inches	Brown (7.5YR 5/4) very cobbly coarse sand, single grain, loose.

Test pit A37

Ap	0 to 13 inches	Dark brown (10YR 3/3) sandy loam, massive, friable, abrupt smooth boundary.
Bw	13 to 15 inches	Dark yellowish brown (10YR 4/4) loamy sand, massive, friable, clear smooth boundary.
C1	15 to 22 inches	Yellowish brown (10YR 5/4) fine sand, single grain, loose, clear smooth boundary.
C2	22 to 31 inches	Brown (7.5YR 5/4) fine sand, massive, very friable.

Test pit A38

Ap	0 to 12 inches	Brown (10YR 4/3) cobbly sandy loam, massive, friable, abrupt smooth boundary.
2C1	12 to 25 inches	Brown (7.5YR 4/4) very cobbly coarse sand, single grain, loose, clear smooth boundary.
2C2	25 to 33 inches	Brown (7.5YR 5/4) coarse sand, single grain, loose, clear smooth boundary.

Test pit A39

Ap	0 to 15 inches	Brown (10YR 4/3) sandy loam, massive, friable, abrupt smooth boundary.
BC	15 to 19 inches	Dark yellowish brown (10YR 4/4) loamy sand, massive, friable, clear smooth boundary.
2C1	19 to 26 inches	Strong brown (7.5YR 4/6) sand, single grain, loose, clear smooth boundary.
3C2	26 to 34 inches	Brown (7.5YR 5/4) sand, single grain, loose.

Test pit A40

Ap	0 to 14 inches	Brown (10YR 4/3) sandy loam, massive, friable, abrupt smooth boundary.
Bw	14 to 18 inches	Dark yellowish brown (10YR 4/4) sandy loam, massive, friable, clear smooth boundary.
2C1	18 to 27 inches	Strong brown (7.5YR 4/6) cobbly coarse sand, single grain, loose, clear smooth boundary.
2C2	27 to 36 inches	Brown (7.5YR 5/4) cobbly coarse sand, single grain, loose.

Test pit A41

Ap	0 to 13 inches	Brown (10YR 4/3) cobbly loamy sand, single grain, loose, clear smooth boundary.
BC	13 to 19 inches	Dark yellowish brown (10YR 4/6) very cobbly loamy sand, single grain, loose, clear smooth boundary.
C1	19 to 24 inches	Brown (7.5YR 5/4) cobbly coarse sand, single grain, loose, clear smooth boundary.
2C2	24 to 33 inches	Light brown (7.5YR 6/4) sand, single grain, loose.

Test pit A42

Ap	0 to 11 inches	Brown (10YR 4/3) very cobbly loamy sand, single grain, loose, clear smooth boundary.
C	11 to 30 inches	Brown (7.5YR 4/3) very cobbly coarse sand, single grain, loose.

Test pit A43

Ap	0 to 15 inches	Brown (10YR 4/3) very cobbly loamy sand, single grain, loose, clear smooth boundary.
C	15 to 31 inches	Reddish brown (5YR 4/4) cobbly coarse sand, single grain, loose.

Test pit A44

Ap	0 to 15 inches	Brown (10YR 4/3) very cobbly loamy sand, single grain, loose, clear smooth boundary.
C	15 to 30 inches	Dark yellowish brown (10YR 4/4) very cobbly coarse sand, single grain, loose. (extremely cobbly in part)

Test pit A45

Ap	0 to 15 inches	Brown (10YR 4/3) very cobbly loamy sand, single grain, loose, clear smooth boundary.
C	15 to 31 inches	Reddish brown (5YR 4/4) cobbly coarse sand, single grain, loose.

Test Pit A46		
Ap	0 to 26 inches	Dark brown (10YR 3/3) sandy loam, massive, friable, abrupt smooth boundary.
BC	26 to 37 inches	Dark yellowish brown (10YR 4/6) sandy loam, massive, friable, abrupt smooth boundary.
C1	37 to 43 inches	Strong brown (7.5YR 4/6) cobbly coarse sand, single grain, loose.
Test Pit A47		
Ap	0 to 15 inches	Dark brown (10YR 3/3) very cobbly sandy loam, massive, friable, abrupt smooth boundary.
Bw	15 to 28 inches	Dark yellowish brown (10YR 4/6) sandy loam, massive, friable, abrupt smooth boundary.
2C1	28 to 33 inches	Dark yellowish brown (10YR 4/6) sand, single grain, loose.
3C2	33 to 40 inches	Brown (7.5YR 5/4) cobbly coarse sand, single grain, loose.
Test Pit A48		
Ap	0 to 19 inches	Dark brown (10YR 3/3) sandy loam, massive, friable, abrupt smooth boundary.
Bw	19 to 37 inches	Dark yellowish brown (10YR 4/4) sandy loam, massive, friable, abrupt smooth boundary.
2C	37 to 44 inches	Yellowish brown (10YR 5/6) sand, single grain, loose.
Test Pit A49		
Ap	0 to 17 inches	Dark brown (10YR 3/3) fine sandy loam, massive, friable, abrupt smooth boundary.
BC	17 to 26 inches	Dark yellowish brown (10YR 4/6) sandy loam, massive, friable, abrupt smooth boundary.
2C	26 to 35 inches	Strong brown (7.5YR 5/4) sand, single grain, loose.
Test Pit A50		
Ap	0 to 14 inches	Dark brown (10YR 3/3) sandy loam, massive, friable, abrupt smooth boundary.
Bw	14 to 26 inches	Dark yellowish brown (10YR 4/6) sandy loam, massive, friable, abrupt smooth boundary.
2C1	26 to 30 inches	Dark reddish brown (5YR 3/4) sand, single grain, loose.
3C2	30 to 35 inches	Brown (7.5YR 5/4) sand, single grain, loose

Test Pit A51		
Ap	0 to 15 inches	Dark brown (10YR 3/3) sandy loam, massive, friable, abrupt smooth boundary.
Bw	15 to 26 inches	Dark yellowish brown (10YR 4/6) sandy loam, massive, friable, abrupt smooth boundary.
C1	26 to 38 inches	Brown (7.5YR 5/4) sand, single grain, loose.
Test Pit A52		
Ap	0 to 10 inches	Dark brown (10YR 3/3) very cobbly sandy loam, massive, friable, abrupt smooth boundary.
Bw	10 to 14 inches	Strong brown (7.5YR 4/6) cobbly sandy loam, massive, friable, clear smooth boundary.
2C1	14 to 35 inches	Brown (7.5YR 4/4) extremely cobbly coarse sand, single grain, loose.
Test Pit A53		
Ap	0 to 13 inches	Dark brown (10YR 3/3) cobbly sandy loam, massive, friable, abrupt smooth boundary.
2C	13 to 38 inches	Brown (7.5YR 5/4) sand, single grain, loose.
Test Pit A54		
Ap	0 to 13 inches	Dark brown (10YR 3/3) cobbly sandy loam, massive, friable, abrupt smooth boundary.
C1	13 to 32 inches	Brown (7.5YR 5/4) sand, single grain, loose.
Test Pit A55		
Ap	0 to 9 inches	Dark brown (10YR 3/3) sandy loam, massive, friable, abrupt smooth boundary.
2C1	9 to 14 inches	Yellowish brown (10YR 5/4) sand, single grain, loose, clear smooth boundary.
3C2	14 to 31 inches	Brown (7.5YR 5/4) cobbly coarse sand, single grain, loose.
Test Pit A56		
Ap	0 to 12 inches	Brown (10YR 4/3) cobbly sandy loam, massive, friable, abrupt smooth boundary.
BC	12 to 18 inches	Brown (7.5YR 4/4) sandy loam, massive, friable, abrupt smooth boundary.
C1	18 to 31 inches	Strong brown (7.5YR 4/6) cobbly coarse sand, single grain, loose.
Test Pit A57		
Ap	0 to 8 inches	Dark brown (10YR 3/3) very cobbly loamy sand, massive, friable, abrupt smooth boundary.
C	8 to 29 inches	Strong brown (7.5YR 5/6) very cobbly coarse sand, single grain, loose.

Test Pit A58		
Ap	0 to 10 inches	Dark brown (10YR 3/3) sandy loam, massive, friable, abrupt smooth boundary.
2C1	10 to 17 inches	Brown (7.5YR 5/4) very cobbly coarse sand, single grain, loose, clear smooth boundary.
2C2	17 to 29 inches	Light brown (7.5YR 6/4) very cobbly coarse sand, single grain, loose.
Test Pit A59		
Ap	0 to 13 inches	Dark brown (10YR 3/3) sandy loam, massive, friable, abrupt smooth boundary.
Bw	13 to 24 inches	Yellowish brown (7.5YR 5/6) sandy loam, massive, friable, clear smooth boundary.
2C	24 to 34 inches	Yellowish brown (10YR 5/6) sand, single grain, loose.
Test Pit A60		
Ap	0 to 14 inches	Dark brown (10YR 3/3) sandy loam, massive, friable, abrupt smooth boundary.
Bw	14 to 22 inches	Dark yellowish brown (10YR 4/6) sandy loam, massive, friable, clear smooth boundary.
BC	22 to 29 inches	Yellowish brown (10YR 5/6) loamy sand, single grain, loose, clear smooth boundary
C	29 to 36 inches	Light yellowish brown (10YR 6/4), sand, single grain, loose.
Test Pit A61		
Ap	0 to 8 inches	Brown (10YR 4/3) very cobbly sandy loam, massive, friable, abrupt smooth boundary.
2C1	8 to 30 inches	Brown (7.5YR 5/4) very cobbly coarse sand, single grain, loose.
Test Pit A62		
Ap	0 to 20 inches	Dark brown (10YR 3/3) sandy loam, massive, friable, abrupt smooth boundary.
Bw	20 to 29 inches	Yellowish brown (10YR 5/6) sandy loam, massive, friable, clear smooth boundary.
2C1	17 to 29 inches	Yellowish brown (10YR 5/4) sand, single grain, loose.
Test Pit B1		
Ap	0 to 8 inches	Dark brown (10YR 3/3) sandy loam, massive, friable, abrupt smooth boundary.
Bw	8 to 14 inches	Dark yellowish brown (10YR 4/4) sandy loam, massive, friable, clear smooth boundary. (200 psi)
2C1	18 to 46 inches	Dark yellowish brown (10YR 4/6) gravelly coarse sand, single grain, loose.

Test Pit B2

Ap	0 to 14 inches	Brown (10YR 4/3) sandy loam, massive, friable, abrupt smooth boundary.
Bw	14 to 23 inches	Dark yellowish brown (10YR 4/6) sandy loam, massive, friable, clear smooth boundary.
BC	23 to 34 inches	Dark yellowish brown (10YR 4/4) loamy sand, massive, very friable, clear smooth boundary.
C	34 to 40 inches	Brown (10YR 5/3) gravelly coarse sand, single grain, loose

Test Pit B3

Ap	0 to 16 inches	Dark yellowish brown (10YR 3/4) stony sandy loam, massive, friable, abrupt smooth boundary.
Bw	16 to 27 inches	Strong brown (7.5YR 4/6) sandy loam, massive, friable, clear smooth boundary.
2C1	27 to 40 inches	Brown (7.5YR 4/4) gravelly loamy sand with 5 percent 5YR 4/3 hard masses, massive, very friable to single grain, loose.

Test Pit B4

Ap	0 to 12 inches	Dark yellowish brown (10YR 3/4) gravelly loamy sand, massive, very friable, abrupt smooth boundary.
Bw	12 to 25 inches	Dark yellowish brown (10YR 4/6) sandy loam, massive, friable, clear smooth boundary.
2C1	25 to 42 inches	Yellowish brown (10YR 4/4) gravelly sand, single grain, loose.

Test Pit B5

Ap	0 to 7 inches	Brown (7.5YR 4/4) fine sandy loam, massive, friable, abrupt smooth boundary.
C/A	7 to 10 inches	Yellowish brown 10YR 5/4 loamy fine sand and brown (7.5YR 4/4) sandy loam, massive, friable, abrupt smooth boundary.
C	10 to 40 inches	Yellowish brown (10YR 5/4) loamy fine sand, massive, very friable.

Test Pit B6

Ap	0 to 13 inches	Dark brown (7.5YR 3/4) stony sandy loam, massive, friable, abrupt smooth boundary. Plow pan 6 – 13 inches (300 psi)
Bw	13 to 25 inches	Yellowish red (5YR 4/6) sandy loam, massive, friable, clear smooth boundary.
C	25 to 40 inches	Strong brown (7.5YR 5/6) sand, single grain, loose.

Test Pit B7

Ap	0 to 5 inches	Brown (7.5YR 4/3) gravelly loamy sand, massive, friable, abrupt smooth boundary.
Bw	5 to 21 inches	Strong brown (7.5YR 4/6) loamy sand, massive, very friable, clear smooth boundary.
C	21 to 40 inches	Strong brown (7.5YR 5/6) sand, massive, very friable to single grain, loose.

Test Pit B8

Ap	0 to 12 inches	Brown (7.5YR 3/3) loamy sand, massive, very friable, abrupt smooth boundary.
B/A	12 to 14 inches	Strong brown (7.5YR 4/6) loamy sand, lens of 7.5YR 3/3, massive, very friable, abrupt smooth boundary.
Bw	14 to 18 inches	Strong brown (7.5YR 4/6) loamy sand, massive, very friable, clear smooth boundary.
C1	18 to 38 inches	Brown (7.5YR 5/4) loamy sand, massive, very friable to single grain, loose, clear smooth boundary.
C2	38 to 48	Brown (7.5YR 5/4) sand., single grain, loose.

Test Pit B9

Ap	0 to 16 inches	Brown (10YR 4/3) loamy sand, massive, friable, abrupt smooth boundary.
Bw	16 to 23 inches	Brown (7.5YR 4/4) loamy sand, massive, friable, clear smooth boundary.
BC	23 to 30 inches	Brown (7.5YR 4/3) loamy sand, massive, very friable, clear smooth boundary.
C	30 to 40 inches	Brown (7.5YR 5/3) sand, single grain, loose

Test Pit B10

Ap	0 to 10 inches	Dark brown (10YR 3/3) sandy loam, massive, friable, abrupt smooth boundary.
Bw1	10 to 21 inches	Dark yellowish brown (10YR 4/6) sandy loam, massive, friable, clear smooth boundary.
Bw2	21 to 27 inches	Dark yellowish brown (10YR 4/4) sandy loam, massive, very friable, clear smooth boundary.
2C1	27 to 40 inches	Brown (10YR 5/3) sand, single grain, loose

Test Pit B11

Ap	0 to 9 inches	Dark brown (10YR 3/3) sandy loam, massive, friable, abrupt smooth boundary.
Bw	9 to 22 inches	Strong brown (7.5YR 4/6) sandy loam, massive, friable, clear smooth boundary.
2C1	22 to 38 inches	Brown (7.5YR 5/3) gravelly coarse sand, single grain, loose

Test Pit B12

Ap	0 to 8 inches	Dark brown (7.5YR 3/3) very cobbly sandy loam, massive, friable, abrupt smooth boundary.
2C	8 to 30 inches	Reddish brown (5YR 4/4) very cobbly coarse sand, single grain, loose.

Test Pit B13

Ap	0 to 11 inches	Dark brown (10YR 3/3) sandy loam, massive, friable, abrupt smooth boundary.
Bw	11 to 21 inches	Dark yellowish brown (10YR 4/4) fine sandy loam, massive, friable, clear smooth boundary.
C	21 to 40 inches	Brown (10YR 5/3) loamy fine sand, massive, friable.

Test Pit B14

Ap	0 to 10 inches	Dark brown (10YR 3/3) sandy loam, massive, friable, abrupt smooth boundary.
Bdw	10 to 14 inches	Brown (7.5YR 4/4) sandy loam, massive, firm, abrupt smooth boundary.
2C1	34 to 40 inches	Brown (7.5YR 4/4) gravelly coarse sand, single grain, loose

Test Pit B15

Ap	0 to 11 inches	Dark brown (7.5YR 3/3) cobbly loamy sand, massive, friable, abrupt smooth boundary.
Bdw	11 to 27 inches	Reddish brown (2.5YR 4/4) loamy fine sand, massive, firm, clear smooth boundary.
C	27 to 38 inches	Reddish brown (5YR 4/4) loamy sand, single grain, loose

Test Pit B16

Ap	0 to 11 inches	Dark brown (7.5YR 3/3) gravelly sandy loam, massive, friable, abrupt smooth boundary.
2C1	11 to 18 inches	Reddish brown (5YR 4/4) very gravelly coarse sand, single grain, loose. Tightly packed material at edge of field.

Test Pit B17

Ap	0 to 12 inches	Dark brown (10YR 3/3) sandy loam, massive, friable, abrupt smooth boundary.
Bw	12 to 19 inches	Dark yellowish brown (10YR 4/6) sandy loam, massive, friable, clear smooth boundary.
2C1	19 to 36 inches	Yellowish brown (10YR 5/6) gravelly coarse sand, single grain, loose.

Test Pit B18

Ap	0 to 10 inches	Dark yellowish brown (10YR 3/4) loamy coarse sand, massive, very friable, clear smooth boundary.
2C1	10 to 30 inches	Dark yellowish brown (10YR 4/4) gravelly coarse sand, single grain, loose, clear smooth boundary.
2C2	23 to 34 inches	Yellowish brown (10YR 5/6) gravelly coarse sand, single grain, loose.

Test Pit B19

Ap	0 to 11 inches	Brown (10YR 4/3) sandy loam, massive, friable, abrupt smooth boundary.
Bw	11 to 17 inches	Dark yellowish brown (10YR 4/6) fine sand, massive, very friable, clear smooth boundary.
C1	17 to 27 inches	Brown (10YR 5/3) fine sand, massive, very friable, clear smooth boundary.
C2	27 to 40 inches	Brown (10YR 5/3) sand, single grain, loose

Test Pit B20

Ap	0 to 10 inches	Brown (10YR 4/3) fine sandy loam, very weak fine granular, friable, abrupt smooth boundary.
Bw	10 to 19 inches	Yellowish brown (10YR 5/6) fine sandy loam, massive, friable, clear smooth boundary.
BC	19 to 24 inches	Dark yellowish brown (10YR 4/6) loamy fine sand, massive, very friable, clear smooth boundary.
C	24 to 38 inches	Pale brown (10YR 6/3) loamy fine sand, massive, very friable.

Test Pit B21

ACp	0 to 10 inches	Dark yellowish brown (10YR 3/4) coarse sand, single grain, loose, abrupt smooth boundary.
C1	10 to 34 inches	Light brown (7.5YR 6/3) coarse sand, single grain, loose, clear smooth boundary.
2C2	34 to 40 inches	Light brown (7.5YR 6/3) very gravelly coarse sand, single grain, loose.

Test Pit B22

ACp	0 to 6 inches	Dark yellowish brown (10YR 3/6) loamy sand, massive, friable, abrupt smooth boundary.
C	6 to 37 inches	Brown (7.5YR 6/3) sand, single grain, loose.

Test Pit B23

Ap	0 to 8 inches	Dark brown (10YR 3/3) sandy loam, massive, friable, abrupt smooth boundary.
Bw1	8 to 13 inches	Brown (7.5YR 4/4) loamy sand, massive, very friable, clear smooth boundary.
Bw2	13 to 18 inches	Reddish brown (5YR 4/4) loamy sand, massive, very friable, clear smooth boundary.
2C	18 to 38 inches	Brown (7.5YR 5/4) gravelly sand, single grain, loose.

Test Pit B24

Ap	0 to 9 inches	Dark brown (10YR 3/3) sandy loam, massive, friable, abrupt smooth boundary.
Bw	9 to 16 inches	Brown (7.5YR 4/4) sandy loam, massive, friable, clear smooth boundary.
Bw2	16 to 21 inches	Strong brown (7.5YR 4/6) sandy loam, massive, friable, clear smooth boundary.
2C	21 to 40 inches	Brown (7.5YR 5/4) gravelly sand, single grain, loose.

Test Pit B25

Ap	0 to 8 inches	Dark brown (7.5YR 3/3) loamy sand, massive, very friable, abrupt smooth boundary.
C	8 to 36 inches	Brown (7.5YR 4/4) gravelly sand, single grain, loose

Test Pit B26

Ap	0 to 9 inches	Dark brown (10YR 3/3) sandy loam, massive, friable, abrupt smooth boundary.
Bw	9 to 23 inches	Brown (7.5YR 4/4) sandy loam, massive, friable, clear smooth boundary.
BC	23 to 32 inches	Yellowish brown (10YR 4/4) loamy fine sand, massive, very friable, clear smooth boundary.
C	32 to 38 inches	Brown (7.5YR 5/4) fine sand, massive, very friable.

Test Pit B27

Ap	0 to 12 inches	Dark brown (10YR 3/3) sandy loam, massive, friable, abrupt smooth boundary.
Bw	12 to 35 inches	Yellowish brown (10YR 5/4) sand, single grain, loose, clear smooth boundary.
C	35 to 42 inches	Brown (7.5YR 5/4) coarse sand, single grain, loose

Test Pit B28

Ap	0 to 9 inches	Dark yellowish brown (10YR 3/4) sandy loam, massive, friable, abrupt smooth boundary.
Bw	9 to 17 inches	Dark yellowish brown (10YR 4/6) loamy sand, massive, very friable, clear smooth boundary.
BC	17 to 36 inches	Brown (7.5YR 4/4) very cobbly coarse sand, single grain, loose.

Test Pit B29

Ap	0 to 12 inches	Brown (10YR 4/3) sandy loam, massive, friable, abrupt smooth boundary.
AB	12 to 21 inches	Dark yellowish brown (10YR 3/4) loamy fine sand, massive, very friable, clear smooth boundary.
Bw	21 to 32 inches	Yellowish brown (10YR 4/4) loamy sand, massive, very friable, clear smooth boundary.
2C	32 to 42 inches	Brown (10YR 4/3) gravelly sand, single grain, loose

Test Pit B30

Ap	0 to 11 inches	Brown (10YR 4/3) loamy sand, massive, very friable, abrupt smooth boundary.
Bw	11 to 15 inches	Dark yellowish brown (10YR 4/4) loamy sand, massive, very friable, clear smooth boundary.
BC	15 to 28 inches	Yellowish brown (10YR 5/4) gravelly loamy sand, single grain, loose, clear smooth boundary.
C	28 to 44 inches	Brown (10YR 5/3) sand, single grain, loose

Test Pit B31

Ap	0 to 12 inches	Brown (10YR 4/3) gravelly sandy loam, massive, friable, abrupt smooth boundary.
Bw	12 to 14 inches	Dark yellowish brown (10YR 4/4) sandy loam, massive, friable, clear smooth boundary.
2C	14 to 40 inches	Dark yellowish brown (10YR 4/4) very gravelly loamy coarse sand, massive, very friable.

Test Pit B32

Ap	0 to 7 inches	Dark yellowish brown (10YR 3/4) gravelly loamy sand, massive, friable, abrupt smooth boundary.
Bw	7 to 12 inches	Dark yellowish brown (10YR 4/4) gravelly loamy sand, massive, very friable to single, grain loose, clear smooth boundary.
2C1	12 to 17 inches	Reddish brown (5YR 4/4) very cobbly sand, single grain, loose, clear smooth boundary.
3C2	17 to 36 inches	Brown (7.5YR 5/3) coarse sand, single grain, loose

Test Pit B33

BAp	0 to 11 inches	Dark yellowish brown (10YR 4/4) loamy sand, massive, friable, abrupt smooth boundary.
BC	11 to 15 inches	Dark yellowish brown (10YR 4/6) loamy sand, massive, very friable, clear smooth boundary.
1C1	15 to 19 inches	Brown (10YR 4/3) loamy sand, massive, very friable, clear smooth boundary.
2C2	19 to 25 inches	Brown (7.5YR 4/3) very cobbly sand, single grain, loose, clear smooth boundary.
3C3	25 to 38 inches	Brown (7.5YR 5/3) gravelly very coarse sand, single grain, loose.

Test Pit B34

Ap	0 to 8 inches	Dark brown (10YR 3/3) loamy sand, massive, very friable, abrupt smooth boundary.
Bw	8 to 13 inches	Strong brown (7.5YR 4/6) loamy sand, massive, very friable, clear smooth boundary.
BC	13 to 28 inches	Yellowish brown (10YR 4/4) sand, single grain, loose, clear smooth boundary.
C	28 to 42 inches	Brown (7.5YR 5/3) sand, single grain, loose

Test Pit B35

Ap1	0 to 13 inches	Very dark grayish brown (10YR 3/2) coarse sandy loam, massive, friable, abrupt smooth boundary.
Ap2	13 to 21 inches	Very dark grayish brown (7.5YR 3/2) sandy loam, massive, friable, clear smooth boundary.
Bw	21 to 28 inches	Brown (7.5YR 4/4) loamy sand, massive, very friable, clear smooth boundary.
2C	28 to 36+ inches	Brown (7.5YR 4/4) very gravelly coarse sand, single grain, loose

Test Pit B36

Ap	0 to 10 inches	Dark brown (10YR 3/3) sandy loam, massive, friable, abrupt smooth boundary.
Bw	10 to 28 inches	Brown (7.5YR 4/4) sandy loam, massive, friable, clear smooth boundary.
2C	28 to 40 inches	Brown (7.5YR 4/3) sand, single grain, loose.

Test Pit B37

Ap	0 to 8 inches	Dark yellowish brown (10YR 3/4) sandy loam, massive, friable, abrupt smooth boundary.
Bw	8 to 17 inches	Dark yellowish brown (10YR 4/4) sandy loam, massive, friable, clear smooth boundary.
BC	17 to 24 inches	Brown (7.5YR 4/4) loamy sand, massive, very friable, clear smooth boundary.
C	24 to 36+ inches	Brown (7.5YR 5/3) coarse sand, single grain, loose

Test Pit B38

Ap	0 to 14 inches	Brown (7.5YR 4/3) sandy loam, massive, friable, abrupt smooth boundary.
BC	14 to 19 inches	Brown (7.5YR 4/4) loamy sand, single grain, loose, clear smooth boundary.
C	19 to 36 inches	Brown (7.5YR 5/3) very gravelly sand, single grain, loose. With some gravelly coarse sand.

Test Pit B39

Ap	0 to 12 inches	Dark yellowish brown (10YR 3/4) sandy loam, massive, friable, abrupt smooth boundary.
BC	12 to 16 inches	Brown (7.5YR 4/4) gravelly sand, single grain, loose, clear smooth boundary.
C	16 to 36 inches	Brown (7.5YR 5/4) gravelly coarse sand, single grain, loose.

Test Pit B40

Ap	0 to 9 inches	Brown (7.5YR 4/3) sandy loam, massive, friable, abrupt smooth boundary.
Bw	9 to 14 inches	Strong brown (7.5YR 4/6) loamy sand, single grain, loose, clear smooth boundary.
2C1	14 to 40 inches	Brown (7.5YR 5/3) gravelly sand, single grain, loose.

Test Pit B41

^Ap	0 to 14 inches	Dark yellowish brown (10YR 3/4) sandy loam, massive, friable, abrupt smooth boundary.
^Cd1	14 to 26 inches	Brown (7.5YR 4/4) loamy sand/sandy loam, massive, firm.
2C2	26 to 30+ inches	Brown (7.5YR 5/3) very gravelly sand, single grain, loose.

Test Pit B42

Ap	0 to 14 inches	Dark brown (7.5YR 3/3) fine sandy loam, massive, friable, clear smooth boundary.
Bw	14 to 22 inches	Brown (7.5YR 4/4) loamy sand, massive, very friable, clear smooth boundary.
BC	22 to 31 inches	Brown (7.5YR 5/4) fine sand, single grain, loose, clear smooth boundary.
C	31 to 38 inches	Brown (7.5YR 5/3) fine sand, single grain, loose.

Test Pit B43

Ap	0 to 14 inches	Dark yellowish brown (10YR 3/4) sandy loam, massive, friable, abrupt smooth boundary.
2C1	14 to 19 inches	Brown (7.5YR 4/4) sand, single grain, loose, clear smooth boundary.
2C2	19 to 30+ inches	Brown (7.5YR 5/4) gravelly coarse sand, single grain, loose.

Test Pit B44

Ap	0 to 12 inches	Dark yellowish brown (10YR 3/4) sandy loam, massive, friable, abrupt smooth boundary.
Bw	12 to 17 inches	Strong brown (7.5YR 4/6) loamy coarse sand, single grain, loose, clear smooth boundary.
C	17 to 30 inches	Brown (7.5YR 4/4) gravelly coarse sand, single grain, loose.

Test Pit B45

Ap	0 to 12 inches	Dark brown (7.5YR 3/3) fine sandy loam, massive, friable, abrupt smooth boundary.
Bw	12 to 15 inches	Brown (7.5YR 4/4) gravelly sandy loam, single grain, loose, abrupt smooth boundary.
C	15 to 32 inches	Strong brown (7.5YR 4/6) very cobbly coarse sand, single grain, loose.

Test Pit B46

Ap	0 to 12 inches	Dark yellowish brown (10YR 3/4) sandy loam, massive, friable, abrupt smooth boundary.
Bw	12 to 17 inches	Brown (7.5YR 4/4) sandy loam, massive, friable, abrupt smooth boundary.
2C1	17 to 29 inches	Brown (7.5YR 4/4) gravelly coarse sand, single grain, loose.

Test Pit B47

Ap	0 to 11 inches	Dark brown (10YR 3/3) sandy loam, massive, friable, abrupt smooth boundary.
BC	11 to 16 inches	Brown (7.5YR 5/4) gravelly sand, single grain, loose, clear smooth boundary.
C	16 to 34+ inches	Light Brown (7.5YR 6/4) sand, single grain, loose.

Test Pit B48

Ap	0 to 13 inches	Brown (7.5YR 4/3) fine sandy loam, massive, friable, abrupt smooth boundary.
Bw	13 to 18 inches	Brown (7.5YR 4/4) sand, single grain, loose, clear smooth boundary.
C	18 to 29+ inches	Light Brown (7.5YR 6/4) very cobbly coarse sand, single grain, loose.

Test Pit B49

Ap	0 to 12 inches	Dark brown (7.5YR 3/4) gravelly loamy sand, massive, friable, clear smooth boundary.
Apd	12 to 17 inches	Dark brown (10YR 3/3) sandy loam, massive, friable, clear smooth boundary.
C1	17 to 30+ inches	Brown (7.5YR 4/4) gravelly sand, single grain, loose.

Test Pit B50

Ap	0 to 12 inches	Brown (10YR 4/3) sandy loam, massive, friable, abrupt smooth boundary.
BC	12 to 15 inches	Brown (7.5YR 4/4) loamy sand, single grain, loose, clear smooth boundary.
C	15 to 34+ inches	Brown (7.5YR 5/4) sand, single grain, loose.

Test Pit B51

Ap	0 to 11 inches	Dark brown (7.5YR 3/3) fine sandy loam, massive, friable, abrupt smooth boundary.
BC	11 to 14 inches	Brown (7.5YR 4/4) fine sand, single grain, loose, clear smooth boundary.
C	14 to 32+ inches	Brown (7.5YR 4/4) sand, single grain, loose.

Test Pit B52

A	0 to 3 inches	Dark brown (7.5YR 3/3) cobbly sandy loam, massive, friable, abrupt smooth boundary.
Bw	3 to 6 inches	Dark brown (7.5YR 3/4) cobbly sand loam, single grain, loose, clear smooth boundary.
2C	6 to 17+ inches	Reddish brown (5YR 4/3) extremely cobbly coarse sand, single grain, loose.

Test Pit B53

Ap	0 to 11 inches	Brown (10YR 4/3) sandy loam, massive, friable, abrupt smooth boundary.
2C	11 to 28+ inches	Brown (7.5YR 4/4) sand, single grain, loose.

Test Pit B54

Ap	0 to 11 inches	Dark brown (10YR 3/3) sandy loam, massive, friable, abrupt smooth boundary.
BC	11 to 14 inches	Strong brown (7.5YR 4/6) loamy sand, single grain, loose, clear smooth boundary.
C	14 to 34+ inches	Brown (7.5YR 5/4) sand, single grain, loose.

Test Pit B55

Ap	0 to 9 inches	Brown (7.5YR 4/3) sandy loam, massive, friable, abrupt smooth boundary.
BC	9 to 15 inches	Dark yellowish brown (10YR 4/6) loamy sand, massive, friable, clear smooth boundary.
C	15 to 36+ inches	Brown (7.5YR 4/4) sand, single grain, loose.

Test Pit B56

Ap	0 to 11 inches	Dark brown (10YR 3/3) sandy loam, massive, friable, abrupt smooth boundary.
A/B	11 to 21 inches	Dark yellowish brown (10YR 3/3) and (10YR 4/6) mechanically mixed sandy loam, massive, friable.
C/A	21 to 44+ inches	Brown (7.5YR 4/4) sand, brown (10YR 4/3) loamy sand, dark brown (10YR 3/3) sandy loam, mechanically mixed.

Test Pit **B57**

Ap	0 to 7 inches	Dark yellowish brown (10YR 3/4) sandy loam, massive, friable, abrupt smooth boundary.
Bw	7 to 17 inches	Dark yellowish brown (10YR 4/6) loamy sand, massive, friable, clear smooth boundary.
C	17 to 30+ inches	Strong brown (7.5YR 4/6) very cobbly loamy coarse sand, single grain, loose.

Test Pit **B58**

Ap	0 to 8 inches	Dark yellowish brown (10YR 3/4) cobbly sandy loam, massive, friable, abrupt smooth boundary.
BC	8 to 15 inches	Brown (7.5YR 4/4) cobbly sandy loam, single grain loose, abrupt smooth boundary.
2C	15 to 28+ inches	Brown (7.5YR 4/4) extremely cobbly loamy coarse sand, single grain loose.

Test Pit **B59**

Ap	0 to 11 inches	Dark yellowish brown (10YR 4/4) very cobbly sandy loam, massive, friable, clear smooth boundary.
AB	11 to 15 inches	Dark yellowish brown (10YR 3/4) cobbly sandy loam, single grain loose, abrupt smooth boundary.
2C	11 to 24+ inches	Brown (7.5YR 4/4) very cobbly loamy coarse sand, single grain loose.

Note: Very difficult to dig in C horizon

Test Pit **B60**

Ap	0 to 10 inches	Dark brown (7.5YR 3/4) very gravelly loamy sand, massive, friable, abrupt smooth boundary.
BC	10 to 14 inches	Strong brown (7.5YR 4/6) gravelly loamy fine sand, single grain loose, clear smooth boundary.
2C1	14 to 21 inches	Dark yellowish brown (10YR 4/4) very gravelly loamy coarse sand, single grain, loose.
2C2	21 to 38+ inches	Brown (7.5YR 4/4) gravelly coarse sand, single grain loose.

Test Pit **B61**

Ap	0 to 12 inches	Dark yellowish brown (10YR 3/4) gravelly sandy loam, massive, friable, abrupt smooth boundary.
2C	12 to 30 inches	Brown (7.5YR 4/4) gravelly coarse sand, single grain loose.

Test Pit **B62**

Ap	0 to 12 inches	Dark yellowish brown (10YR 4/4) gravelly sandy loam, massive, friable, abrupt smooth boundary.
BC	12 to 17 inches	Yellowish brown (10YR 5/4) loamy fine sand, single grain loose, clear smooth boundary.
C	17 to 31+ inches	Brown (7.5YR 4/4) gravelly coarse sand, single grain loose.

Test Pit B63

Ap	0 to 25 inches	Dark brown (10YR 3/3) loam, massive, friable, abrupt smooth boundary.
Bw1	25 to 31 inches	Brown (7.5YR 4/4) fine sandy loam, massive, friable, abrupt smooth boundary.
Bw2	31 to 46+ inches	Dark yellowish brown (10YR 4/6) fine sandy loam, massive, friable.

Test Pit B64

Ap	0 to 16 inches	Dark brown (10YR 3/3) fine sandy loam, massive, friable, abrupt smooth boundary.
Bw	16 to 26 inches	Dark yellowish brown (10YR 4/6) fine sandy loam, massive, friable, abrupt smooth boundary.
BC	26 to 31 inches	Dark yellowish brown (10YR 4/4) gravelly loamy sand, single grain loose, clear smooth boundary.
2C	31 to 34+ inches	Brown (7.5YR 4/4) gravelly coarse sand, single grain loose.

Test Pit B65

Ap	0 to 11 inches	Dark yellowish brown (10YR 3/4) gravelly loamy sand, massive, friable, abrupt smooth boundary.
2C	11 to 24 inches	Brown (7.5YR 4/4) gravelly sand, single grain loose.

Test Pit B66

Ap	0 to 10 inches	Dark yellowish brown (10YR 3/4) gravelly sandy loam, massive, friable, clear smooth boundary.
Bw	10 to 16 inches	Dark yellowish brown (10YR 4/6) gravelly sandy loam, massive, friable, abrupt smooth boundary.
2C	16 to 38 inches	Brown (7.5YR 4/4) gravelly coarse sand, single grain loose.

Test Pit B67

Ap	0 to 11 inches	Dark yellowish brown (10YR 3/4) sandy loam, massive, friable, abrupt smooth boundary.
Bw	11 to 17 inches	Dark yellowish brown (10YR 4/6) sandy loam, massive, friable, clear smooth boundary.
BC	17 to 23 inches	Yellowish brown (10YR 5/4) loamy fine sand, single grain, loose, clear smooth boundary.
2C1	23 to 32 inches	Brown (7.5YR 5/4) gravelly sand, single grain, loose, clear smooth boundary.
2C2	32 to 38 inches	Brown (7.5YR 5/3) sand, single grain, loose, clear smooth boundary.
2C3	38 to 42+ inches	Brown (7.5YR 4/2) sand, single grain loose.

Test Pit: **C1**

Ap	0 to 8 inches	Brown (10YR 3/4) coarse sandy loam, massive, friable, abrupt smooth boundary.
2C1	8 to 13 inches	Yellowish brown (10YR 5/4) coarse sand, massive, very friable, clear smooth boundary.
2C2	13 to 38 inches	Dark yellowish brown 10YR 4/6 coarse sand, single grain loose.

Test Pit: **C2**

Ap	0 to 11 inches	Brown (10YR 3/4) sandy loam, massive, friable, abrupt smooth boundary.
Bw	11 to 20 inches	Yellowish brown (10YR 5/4) sandy loam, massive, friable, clear smooth boundary.
2C1	20+ inches	Dark yellowish brown (10YR 4/4) coarse sand, single grain, loose

Test Pit: **C3**

Ap	0 to 10 inches	Dark yellowish brown (10YR 4/4) loamy sand, massive, friable, abrupt smooth boundary.
Bw	10 to 29 inches	Dark yellowish brown (10YR 4/6) loamy sand, massive, friable, clear smooth boundary.
C	17 to 40 inches	Brown (10YR 4/3) sand, single grain, loose

Test Pit: **C4**

Ap	0 to 15 inches	Dark yellowish brown (10YR 4/4) loamy sand, massive, friable, abrupt smooth boundary.
Bw	15 to 17 inches	Strong brown (7.5YR 4/6) loamy sand, massive, friable, clear smooth boundary.
C	17 to 40 inches	Brown (7.5YR 4/3) gravelly coarse sand, single grain, loose

Test Pit: **C5**

Ap	0 to 16 inches	Dark brown (7.5YR 3/4) loamy sand, massive, friable, abrupt smooth boundary.
BC	16 to 19 inches	Strong brown (7.5YR 4/6) sand, single grain, loose
C	19 to 40 inches	Dark yellowish brown (10YR 4/6) sand, single grain, loose

Test Pit: **C6**

Ap	0 to 15 inches	Dark brown (10YR 3/3) loamy sand, massive, friable, abrupt smooth boundary.
Bw	15 to 26 inches	Dark yellowish brown (10YR 4/6) loamy sand, massive, friable, abrupt smooth boundary.
C	26 to 30 inches	(10YR 6/3) medium sand, single grain, loose

Test Pit: **C7**

Ap	0 to 11 inches	Dark brown (10YR 3/3) sandy loam, massive, friable, abrupt smooth boundary
Bw	11 to 15 inches	Yellowish brown (10YR 5/6) sand, massive, very friable, clear smooth boundary.
C	15 to 40	Light yellowish brown (10YR 6/4) sand, single grain, loose.

Test Pit: **C8**

Ap	0 to 10 inches	Brown (10YR 4/3) loamy sand, massive, friable, abrupt smooth boundary.
2C1	10 to 21 inches	Brown (7.5YR 4/4) loamy sand, massive, friable, clear smooth boundary.
2C2	21 to 32 inches	Brown (7.5YR 5/4) gravelly coarse sand, single grain, loose
2C3	32 + inches	Brown (7.5YR 5/4) very gravelly coarse sand, single grain, loose

Test Pit: **C9**

Ap	0 to 9 inches	Dark brown (10YR 3/3) sandy loam, massive, friable, abrupt smooth boundary.
Bw	9 to 14 inches	Dark yellowish brown (10YR 4/4) sandy loam, massive, friable, clear smooth boundary.
2C	14 to 40 inches	Strong brown (7.5YR 4/6) sand, single grain, loose

Test Pit: **C10**

Ap	0 to 13 inches	Dark brown (10YR 3/3) fine sandy loam, massive, friable, abrupt smooth boundary.
Bw	13 to 30 inches	Dark yellowish brown (10YR 4/4) fine sandy loam, massive, firm, clear smooth boundary.
C	30 to 42 inches	Yellowish brown (10YR 5/4) sand, single grain, loose.

Test Pit: **C11**

Ap	0 to 14 inches	Dark brown (10YR 3/3) sandy loam, massive, friable, clear smooth boundary.
C	14 to 40 inches	Dark yellowish brown (10YR 4/6) very gravelly coarse sand, single grain, loose.

Test Pit: **C12**

Ap	0 to 11 inches	Dark brown (10YR 3/3) sandy loam, massive, friable, abrupt smooth boundary.
Bw	11 to 28 inches	Dark yellowish brown (10YR 4/6) sandy loam, massive, friable, clear smooth boundary.
C	28 to 40 inches	Yellowish brown (10YR 5/6) sand, single grain, loose.

Test Pit: **C13**

Ap	0 to 11 inches	Brown (10YR 3/4) sandy loam, massive, friable, abrupt smooth boundary.
Bw	11 to 13 inches	Dark yellowish brown (10YR 4/4) sandy loam, massive, friable, clear smooth boundary.
2C1	13 to 20 inches	Dark yellowish brown (10YR 4/4) very gravely loamy sand, massive, friable

Test Pit: **C14**

Ap	0 to 14 inches	Brown (10YR 4/3) sandy loam, massive, friable, abrupt smooth boundary.
Bw	14 to 21 inches	Dark yellowish brown (10YR 4/6) with streaks (15%) of (10R 2/1). sandy loam, massive, friable, clear smooth boundary.
C	21 to 26 inches	Brown (7.5YR 4/4) loamy sand, massive, friable

Test Pit: **C15**

Ap	0 to 19 inches	Dark brown (10YR 3/3) sandy loam, massive, friable, abrupt smooth boundary.
Bw	19 to 31 inches	Brown (7.5YR 4/4), loamy sand, massive, friable, clear smooth boundary.
C	31 to 40 inches	Brown (7.5YR 4/4) gravelly sand, single grain, loose

Test Pit: **C16**

Ap	0 to 16 inches	Dark brown (10YR 3/3) sandy loam, massive, friable, abrupt smooth boundary.
Bw	16 to 29 inches	Strong brown (7.5YR 4/6), sandy loam, massive, friable, clear smooth boundary.
C	29 to 40 inches	Brown (10YR 4/4) loamy sand, massive, friable

Parent Material	Drainage Class	Depth to Restrictive Layer	Restrictive Layer	Coarse Fragment Modifier (PM)	Parent Material texture	Slope Class	Coarse Fragment Modifier	Surface texture
1 - Outwash	0 - VPD	1 <24"	R - Bedrock	gr - gravelly	3 - sandy loam	A - 0-3%	gr - gravelly	3 - sandy loam
2 - Loose till	1 - PD	2 - 24" - 48"	D - Densic	vgr very gravelly	5 - coarse sandy loam	B - 3-8%	vgr very gravelly	5 - coarse sandy loam
7 - Sands ¹	2 - MWD	3 > 48"		xgr - extremely gr	6 - loamy sand	C - 8 - 15%	xgr - extremely gr	6 - loamy sand
8 - HTM	3 - WD			cb - cobbly	7 - loamy fine sand		cb - cobbly	7 - loamy fine sand
	4 - SWExD			vcb - very cb	8 - Loamy coarse sand		vcb - very cb	8 - Loamy coarse sand
	5 - ExD			sn - stony	9 sand		sn - stony	9 sand
				vsn - very stony	11 coarse sand		vsn - very stony	11 coarse sand

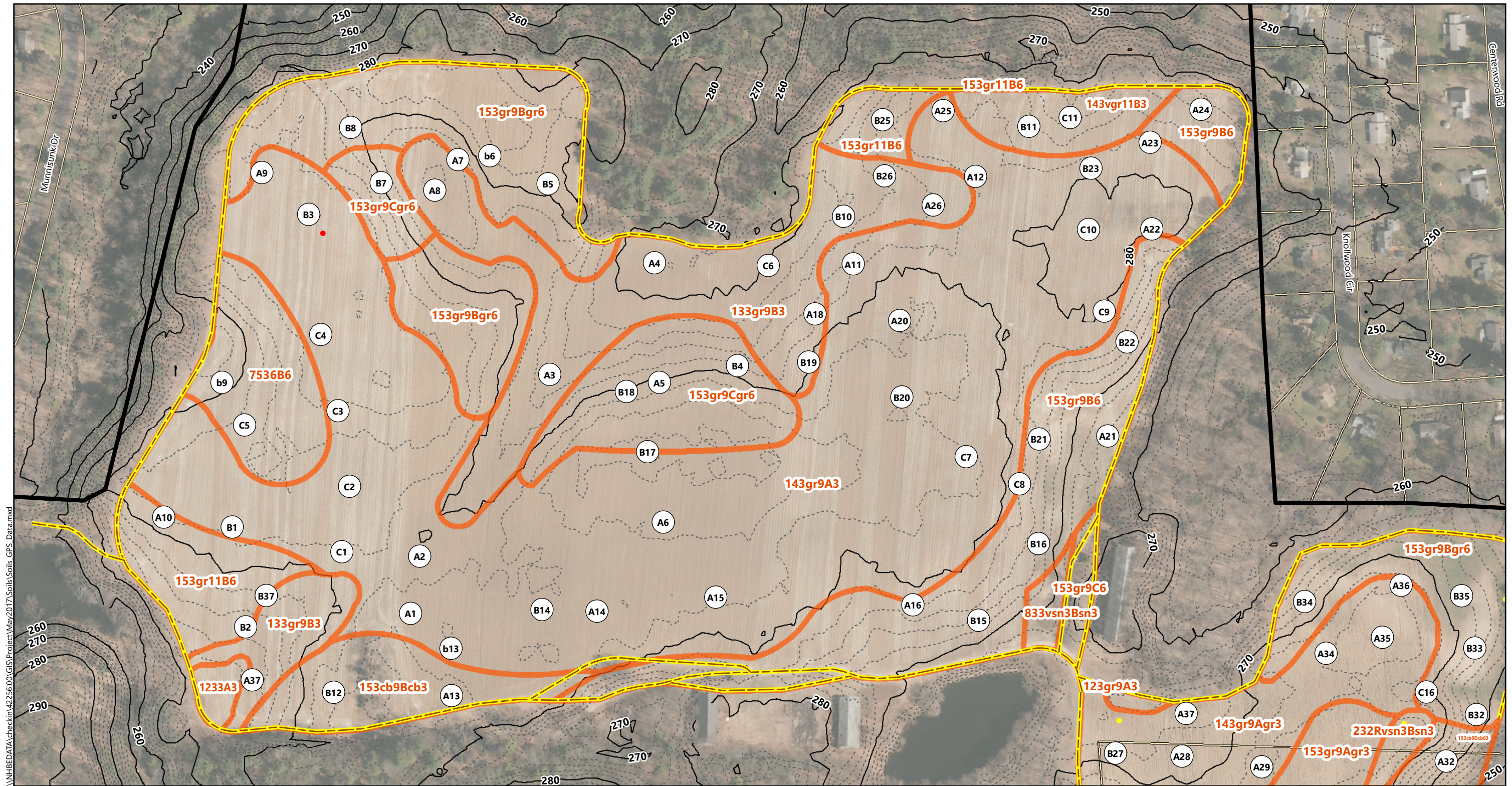
1 Eolian sands

Observation ID	Landscape position	Slope	Parent Material	Ap horizon texture	Ap depth	Cambic present	Ap color (chroma+value)	Ap psi	Coarse Fragment Ap	Coarse Fragment Substratum	Substratum Texture	Densic depth	Conc depth	Deplth depth	Wetness Class	Map unit
A	1	Summit	A	1	5	4	0	7		gr	-	11	>36			
A	2	Summit	A	1	3	5	5	6		-	-	9	>38			
A	3	Toeslope	A	1	3	7	0	7		-	gr	8	>48			
A	4	Footslope	A	1	3	7	5	6		-	gr	9	>46	-	-	
A	5	Shoulder	B	1	5	4	0	8		gr	gr	11	>25	-	-	
A	6	Summit	A	1	3	5	3	6		-	gr	11	>29	-	-	
A	7	Backslope	C	1	6	7	0	6		-	-	9	>42	-	-	
A	8	Toeslope	A	1	3	7	2	7		-	-	3	>44	19"	-	
A	9	Shoulder	A	1	6	5	0	6		-	-	11	>40			
A	10	Shoulder	A	1	3	4	0	7		-	gr	11	>36			
A	11	Shoulder	B	1	6	6	0	6		-	-	9	>40	-	-	
A	12	Summit	A	1	3	4	0	7		-	gr	9	>35			
A	13	Backslope	A	1	5	3	0	7		-	vcb	11	>15	-	-	
A	14	Summit	A	1	3	4	0	7		-	gr	9	>26	-	-	
A	15	Summit	A	1	3	5	0	7		-	gr	11	>40			
A	16	Shoulder	B	1	6	5	0	7		-	gr	11	>40	-	-	
A	17			1	7	4	0	6		-	-	9	>28	-	-	
A	18	Shoulder	B	1	3	4	2	7	200 – 12"	-	-	9	>25			
A	20	Summit	A	1	3	4	2	6		-	-	11	>31			
A	21	Footslope	B	1	4	3	7	8	200 - 9"	-	-	3	>39			
A	22	Summit	B	1	3	3	0	5		-	vgr	9	>25			
A	23	Summit	B	1	3	4	2	6	200 – 14"	-	-	9	>37			
A	24	Shoulder	B	1	6	5	0	6	200 – 14"	-	xgr	11	>30			
A	25	Summit	A	1	3	5	2	5		-	vgr	11	>28			
A	26	Backslope	A	1	3	6	3	6		-	-	7	>25			
A	27	Footslope	A	1	3	6	4	6	None	-	-	9	>35	-	-	
A	28	Footslope	A	1	3	6	3	7	None	-	gr	9	>33	-	-	
A	29	Shoulder	B	1	3	3	0	2	200-"14	-	vcb	11	>21	-	-	
A	30	Summit	A	1	3	4	0	7	None	-	-	9	>33	-	-	
A	31	Baclslope	C	1	3	3	0	7	None	vcb	-	9	18	-	18	
A	32	Backslope	C	1	3	3	4	7	None	cb	vcb	9	>25	-	-	
A	33	Summit	A	1	3	3	0	7	None	cb	-	7	10	-	-	
A	34	Backslope	B	1	3	4	4	7	200-19"	-	-	9	>35	-	-	
A	35	Summit	A	1	3	3	0	7	None	-	cb	11	>35	-	-	
A	36	Backslope	B	1	6	4	0	6	200-12"	-	vcb	11	>24	-	-	
A	37	Backslope		1	3	5	0	6	200 – 12"	-	-	10	>27			
A	38	Summit	A	1	3	4	0	7		cb	vcb	11	>25	-	-	
A	39	Shoulder	A	1	3	5	0	7		-	-	9	>26	-	-	
A	40	Summit	A	1	3	5	2	7		-	cb	11	>27	-	-	
A	41	Backslope	B	1	6	5	0	7		cb	-	9	>24	-	-	
A	42	Backslope	B	1	6	4	0	7		vcb	cb	11	>23	-	-	
A	43	Shoulder	A	1	6	5	0	7		vcb	cb	11	>22	-	-	

Observation ID	Landscape position	Slope	Parent Material	Ap horizon texture	Ap depth	Cambic present	Ap color (chroma+value)	Ap psi	Coarse Fragment Ap	Coarse Fragment Substratum	Substratum Texture	Densic depth	Conc depth	Depl depth	Wetness Class	Map unit
A	44	Backslope	B	1	6	5	0	6		vcb	xcb	11	>20	-		
A	45	Footslope	A	1	3	7	0	7		-	-	9	>42	-	-	
A	46	Toeslope	A	1	3	7	4	6		-	cb	11	>41	-	-	
A	47	Toeslope	A	1	3	5	5	6		vcb	cb	11	>37	-	-	
A	48	Toeslope	A	1	3	7	6	6		-	-	9	>37	-	-	
A	49	Toeslope	A	1	4	6	3	6		-	-	9	>32	-		
A	50	Toeslope	A	1	4	5	4	6		-	-	9	>35	-		
A	51	Backslope	A	1	3	5	4	6		-	-	9	>35	-	-	
A	52	Summit	A	1	3	4	5	6		vcb	xcb	9	>24	-	-	
A	53	Summit	A	1	3	5	0	6		cb	-	9	>32	-	-	
A	54	Backslope	B	1	3	5	0	6		cb	-	9	>29	-	-	
A	55	Backslope	A	1	3	3	0	6		-	cb	11	>20	-	-	
A	56	Summit	A	1	3	4	2	7		cb	vcb	11	>25	-	-	
A	57	Shoulder	A	1	6	3	0	6		vcb	vcb	11	>15	-		
A	58	Summit	A	1	3	4	0	6		vcb	vcb	11	>17	-	-	
A	59	Backslope	B	1	3	5	4	6		-	-	9	>24	-	-	
A	60	Backslope	A	1	3	5	3	6		-	-	9	>32	-	-	
A	61	Backslope	B	1	3	3	0	7		vcb	vcb	11	>14	-	-	
A	62	Summit	A	1	3	7	3	6		-	-	9	>35	-	-	
A	33 A	Summit	A	1	3	3	2	7	None	-	-	7	30	-	-	
B	1	Shoulder	B	1	3	3	2	6	200 - 8"	-	gr	11	>46			
B	2			1	3	5	3	7		-	gr	11	>40			
B	3			1	3	6	3	7		gr	gr	6	>40			
B	4			1	6	4	5	7		gr	gr	9	>42			
B	5			1	4	3	0	8		-	-	7	>40			
B	6	Shoulder	B	1	3	5	4	7		gr	-	9	>40			
B	7	Shoulder	C	1	6	2	0	7		gr	-	9	>40			
B	8			1	6	4	0	6		-	-	9	>38			
B	9			1	6	6	0	6		-	-	9	>33			
B	10			1	3	4	6	7		-	-	9	>27			
B	11			1	3	3	5	6			gr	11	>36			
B	12	Summit	A	1	3	4	0	6		vcb	vcb	11	>24			
B	13			1	3	4	4	10		-	-	7	>24			
B	14			1	3	4	2	6		-	gr	11	>40			
B	15			1	6	4	0	6		cb	-	7	>38			
B	16			1	3	4	0	6	200	gr	gr	vgr	>18			
B	17		A	1	3	4	3	6	150-200	-	gr	11	>36	-	-	
B	18		B	1	6	4	0	7		-	gr	11	>30	-	-	
B	19	Shoulder	B	1	3	4	0	7	>200	-	-	10	>40	-	-	
B	20	Summit	A	1	4	4	3	6	None	-	-	7	>38	-	-	
B	21	Midslope	B	1	11	4	0	7	200	-	vgr	11	>34	-	-	

Observation ID	Landscape position	Slope	Parent Material	Ap horizon texture	Ap depth	Cambic present	Ap color (chroma+value)	Ap psi	Coarse Fragment Ap	Coarse Fragment Substratum	Substratum Texture	Densic depth	Conc depth	Deplth depth	Wetness Class	Map unit
B	22	Midslope		1	6	2	0	6	200 – 12"	-	-	9	>36			
B	23	Shoulder		1	3	4	0	6	200	-	gr	9	>38	-	-	
B	24			1	3	3	4	6	200 – 12"	-	gr	9	>40	-	-	
B	25	Midslope	B	1	6	3	0	6	200 – 9"	-	gr	11	>36	-	-	
B	26		B	1	3	3	4	6	None	-	-	10	>32	-	-	
B	27	Backslope	B	1	3	4	0	6	200-12"	-	-	11	>42	-	-	
B	28	Summit	A	1	3	3	0	7	None	-	vcb	11	>30	-	-	
B	29	Summit	A	1	3	4	0	6	None	-	gr	9	>42	-	-	
B	30	Shoulder	A	1	6	4	0	7	None	-	-	9	>42	-	-	
B	31	Footslope	A	1	3	4	1	7	None	gr	vgr	11	>32	-	-	
B	32	Backslope	B	1	6	3	0	7	None	cb	xcb	11	>34	-	-	
B	33	Shoulder	B	1	6	4	0	8	None	vgr	gr	11	>36	-	-	
B	34	Backslope	B	1	6	3	0	6	None	-	-	9	>42	-	-	
B	35			1	5	5	3	5	200-12"	-	vgr	11	>36			
B	36	Footslope	B	1	3	4	6	6	None	-	-	9	>28			
B	37	Midslope	B	1	3	4	3	6	200 - 12"	-	-	9	>42	-	-	
B	38	Summit	A	1	3	5	0	7		-	vg	9	>36		-	
B	39			1	3	4	0	7		-	gr	11	>36		-	
B	40			1	3	3	0	7		-	gr	9	>40		-	
B	41	Summit		1	3	5	0	7		-	vgr	9	>26		-	
B	42			1	4	5	0	6		-	-	10	>38			
B	43			1	3	5	0	7		-	gr	11	>30		-	
B	44			1	3	4	0	7		-	gr	11	>30		-	
B	45			1	4	4	1	6		-	vcb	11	>32			
B	46			1	3	4	2	7		-	gr	11	>29			
B	47			1	3	4	0	6		-	-	9	>34			
B	48			1	4	5	0	7		-	vcb	11	>29			
B	49			1	6	4	0	7		gr	gr	9	>30			
B	50			1	3	4	0	7		-	-	9	>34			
B	51			1	4	4	0	6		-	-	9	>32			
B	52			1	3	1	1	6		cb	xcb	11	>17			
B	53			1	3	4	0	7		-	-	9	>28			
B	54			1	3	4	0	6		-	-	9	>34			
B	55			1	3	3	0	7		-	-	9	>36			
B	56			1	3	4	0	6		-	-	9	>44			
B	57			1	3	3	0	7		-	vcb	11	>30			
B	58			1	3	3	0	7		cb	xcb	11	>28			
B	59			1	3	4	2	7		vcb	vcb	11	>24			
B	60			1	6	4	0	7		vg	gr	11	>38			
B	61			1	3	4	0	7		gr	gr	11	>30			
B	62			1	3	4	0	8		gr	gr	11	>31			
B	63			1	2	7	7	6		-	-	4	>46		-	

Observation ID		Landscape position	Slope	Parent Material	Ap horizon texture	Ap depth	Cambic present	Ap color (chroma+value)	Ap psi	Coarse Fragment Ap	Coarse Fragment Substratum	Substratum Texture	Densic depth	Conc depth	Depl depth	Wetness Class	Map unit
B	64			1	4	6	4	6		-	gr	11	>34				
B	65			1	6	4	0	7		gr	gr	9	>24				
B	66			1	3	4	2	7		gr	gr	11	>38				
B	67			1	3	5	2	7		-	-	9	>42				
C	1	Summit		1	5	3	0	7	None	-	-		>38	-	-		
C	2			1	3	4	3	7		-	-	11	>20	-	-		
C	3			1	3	4	0	8		-	-	9	>29	-	-		
C	4			1	6	5	0	7		-	gr	11	>40	-	-		
C	5			1	6	6	0	7		-	-	9	>40	-	-		
C	6	Toe Slope	B	1	6	5	0	6	<150 -24"	-	-	9	>30	-	-		
C	7	Summit	A	1	3	4	0	6	None	-	-	9	>40	-	-		
C	8		B	1	6	4	0	7	200-12"	-	vgr	11	>32	-	-		
C	9	Summit	B	1	3	3	2	6	200-16"	-	-	9	>40	-	-		
C	10			1	4	5	6	6	200-9"	-	-	9	>42	-	-		
C	11		B	1	3	5	0	6	200-12"	-	vgr	11	>40	-	-		
C	12		A	1	3	4	6	6	none	-	-	9	>40	-			
C	13		B	1	3	4	1	7	none	-	vgr	6	>20	-			
C	14			1	3	5	3	7	none	vgr	-	6	>26				
C	15	Footslope		1	3	7	0	6	none	-	gr	9	>40				
C	16			1	3	6	5	6		-	gr	9	>40				



\\NHBB\DATA\checkin\42256.00\GIS\Project\May2017\Soils\Soils_GPS_Data.mxd



- Property Boundary
- Abutting Parcel
- Farm Road
- Landscape Unit Delineation
- Severely Eroded Area
- Observation Point
- 2-ft Elevation Contour
- 10-ft Index Contour

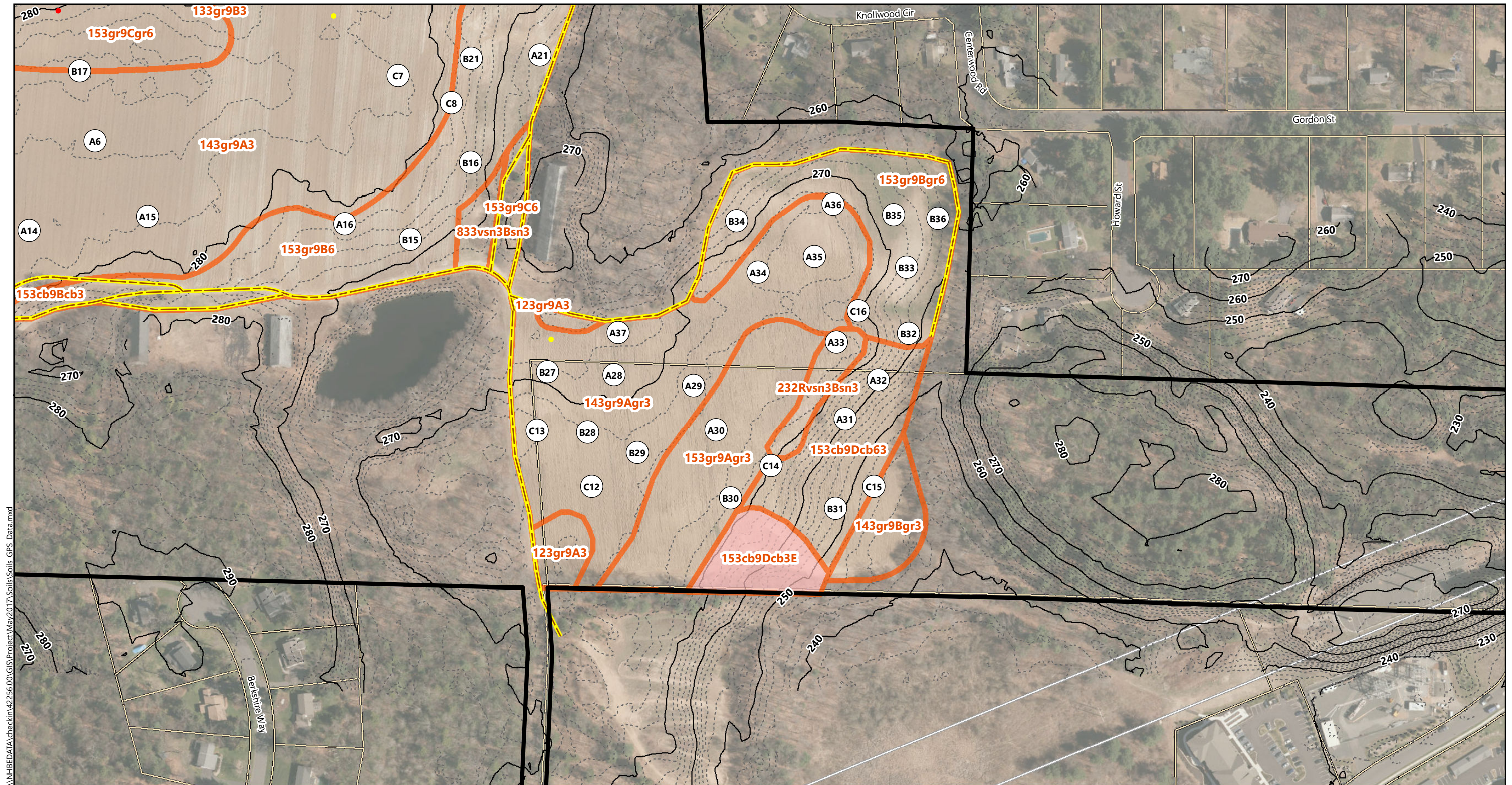
Parent Material	Drainage Class	Depth to Restrictive Layer	Restrictive Layer	Coarse Fragment Modifier (PM)	Parent Material texture	Slope Class	Coarse Fragment Modifier (S)	Surface texture
1 - Outwash	0 - VPD	1 < 24"	R - Bedrock	gr - gravelly	3 - Sandy loam	A - 0-3%	gr - gravelly	3 - Sandy loam
2 - Loose till	1 - PD	2 - 24" - 48"	D - Densic	vgr very gravelly	5 - Coarse sandy loam	B - 3-8%	vgr very gravelly	5 - Coarse sandy loam
7 - Eolian Sands	2 - MWD	3 > 48"		xgr - extremely gr	6 - Loamy sand	C - 8 - 15%	xgr - extremely gr	6 - Loamy sand
8 - HTM	3 - WD			cb - cobbly	7 - Loamy fine sand	D - > 15%	cb - cobbly	7 - Loamy fine sand
	4 - SWExD			vcb - very cb	8 - Loamy coarse sand		vcb - very cb	8 - Loamy coarse sand
	5 - ExD			sn - stony	9 - Sand		sn - stony	9 - Sand
				vsn - very stony	11 - Coarse sand		vsn - very stony	11 - Coarse sand

Tobacco Valley Solar

Simsbury, Connecticut

Agricultural Fields
Page 1 of 3

Source: VHB, CTDEEP, ESRI



\\NHBB\DATA\checkin\42256.00\GIS\Project\May2017\Soils\Soils_GPS_Data.mxd



- Property Boundary
- Abutting Parcel
- Farm Road
- Landscape Unit Delineation
- Severely Eroded Area
- Observation Point
- Existing Eversource ROW
- 2-ft Elevation Contour
- 10-ft Index Contour

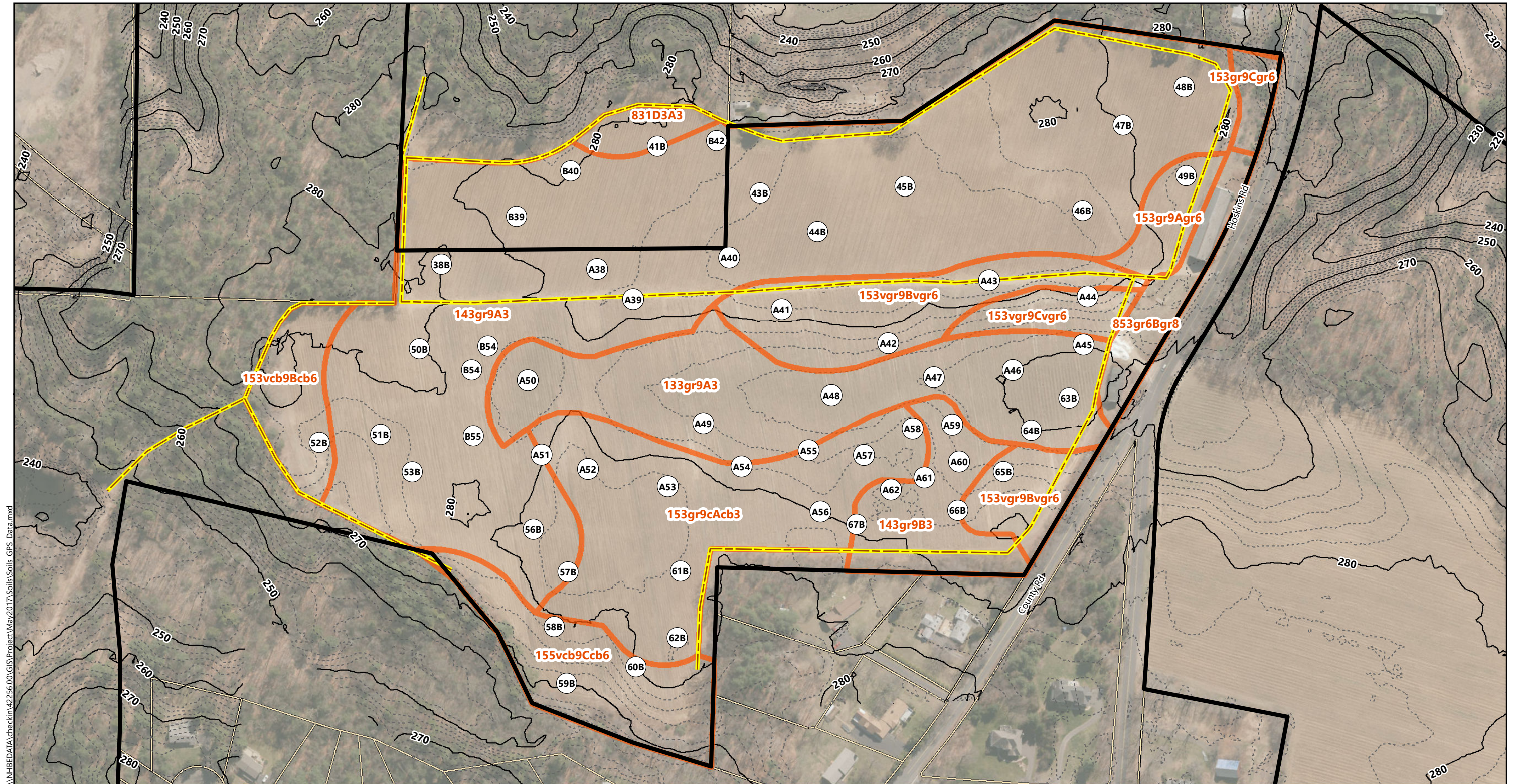
Parent Material	Drainage Class	Depth to Restrictive Layer	Restrictive Layer	Coarse Fragment Modifier (PM)	Parent Material texture	Slope Class	Coarse Fragment Modifier (S)	Surface texture
1 - Outwash	0 - VPD	1 < 24"	R - Bedrock	gr - gravelly	3 - Sandy loam	A - 0-3%	gr - gravelly	3 - Sandy loam
2 - Loose till	1 - PD	2 - 24" - 48"	D - Densic	vgr very gravelly	5 - Coarse sandy loam	B - 3-8%	vgr very gravelly	5 - Coarse sandy loam
7 - Eolian Sands	2 - MWD	3 > 48"		xgr - extremely gr	6 - Loamy sand	C - 8 - 15%	xgr - extremely gr	6 - Loamy sand
8 - HTM	3 - WD			cb - cobbly	7 - Loamy fine sand	D - > 15%	cb - cobbly	7 - Loamy fine sand
	4 - SWExD			vcb - very cb	8 - Loamy coarse sand		vcb - very cb	8 - Loamy coarse sand
	5 - ExD			sn - stony	9 - Sand		sn - stony	9 - Sand
				vsn - very stony	11 - Coarse sand		vsn - very stony	11 - Coarse sand

Tobacco Valley Solar

Simsbury, Connecticut

Agricultural Fields
Page 2 of 3

Source: VHB, CTDEEP, ESRI



\\NHBB\DATA\checkin\42256.00\GIS\Project\May2017\Soils\Soils_GPS_Data.mxd



- Property Boundary
- Abutting Parcel
- Farm Road
- Landscape Unit Delineation
- Severely Eroded Area
- Observation Point
- Existing Eversource ROW
- 2-ft Elevation Contour
- 10-ft Index Contour

Parent Material	Drainage Class	Depth to Restrictive Layer	Restrictive Layer	Coarse Fragment Modifier (PM)	Parent Material texture	Slope Class	Coarse Fragment Modifier (S)	Surface texture
1 - Outwash	0 - VPD	1 < 24"	R - Bedrock	gr - gravelly	3 - Sandy loam	A - 0-3%	gr - gravelly	3 - Sandy loam
2 - Loose till	1 - PD	2 - 24" - 48"	D - Densic	vgr very gravelly	5 - Coarse sandy loam	B - 3-8%	vgr very gravelly	5 - Coarse sandy loam
7 - Eolian Sands	2 - MWD	3 > 48"		xgr - extremely gr	6 - Loamy sand	C - 8 - 15%	xgr - extremely gr	6 - Loamy sand
8 - HTM	3 - WD			cb - cobbly	7 - Loamy fine sand	D - > 15%	cb - cobbly	7 - Loamy fine sand
	4 - SWExD			vcb - very cb	8 - Loamy coarse sand		vcb - very cb	8 - Loamy coarse sand
	5 - ExD			sn - stony	9 - Sand		sn - stony	9 - Sand
				vsn - very stony	11 - Coarse sand		vsn - very stony	11 - Coarse sand

Tobacco Valley Solar

Simsbury, Connecticut

Agricultural Fields
Page 3 of 3

Source: VHB, CTDEEP, ESRI