

KENNETH C. BALDWIN

280 Trumbull Street
Hartford, CT 06103-3597
Main (860) 275-8200
Fax (860) 275-8299
kbaldwin@rc.com
Direct (860) 275-8345

Also admitted in Massachusetts

October 3, 2018

Melanie A. Bachman, Esq.
Executive Director/Staff Attorney
Connecticut Siting Council
10 Franklin Square
New Britain, CT 06051

Re: Petition No. 1303 – 1069 East Main Street, Stamford, Connecticut

Dear Attorney Bachman:

In preparation for the installation of the facility approved in Petition No. 1303, the Cellco Partnership d/b/a Verizon Wireless (Cellco) construction team determined that the location for the roof-top tower and equipment cabinets needed to be shifted slightly (approximately six (6) feet) to the west of the approved location. To accommodate this shift, the steel mounting platform has been reconfigured. These modifications are required so that Cellco can provide some additional clearance between its equipment and existing equipment on the roof and to accommodate the landlord's need to modify an existing roof hatch. Attached is a sketch from EBI Consulting depicting the shift in location and reconfiguration of Cellco's tower and equipment platform. The modified facility will be constructed in accordance with all applicable State and local codes.

If you have any questions or need any additional information regarding this facility please do not hesitate to contact me.

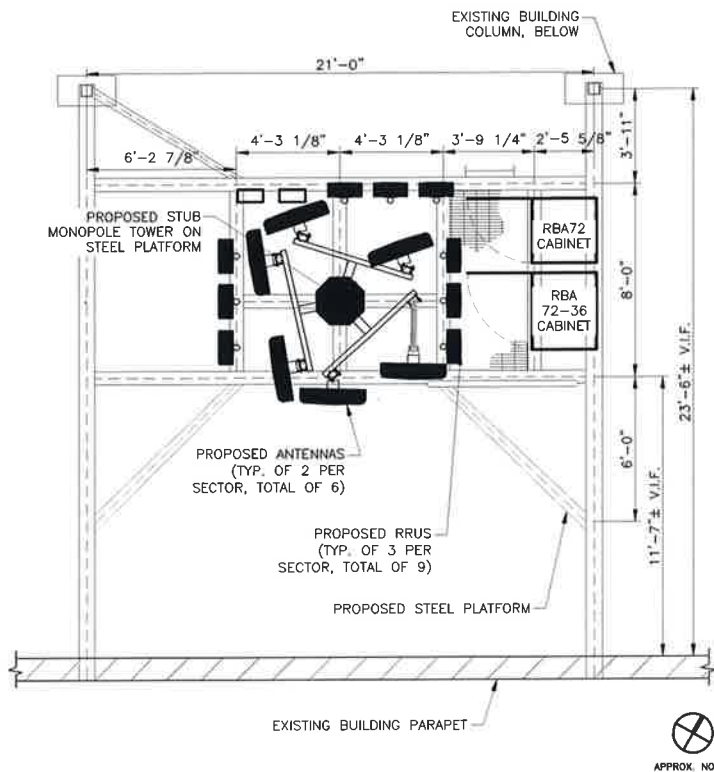
Sincerely,



Kenneth C. Baldwin

Attachment

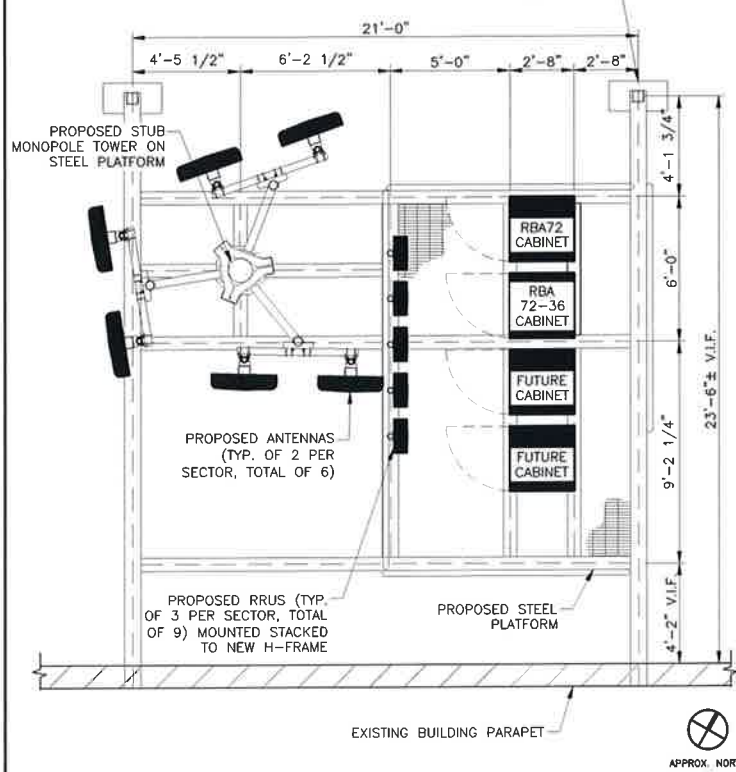
Copy to: John Tierney, Verizon Wireless



1

**PREVIOUSLY PROPOSED
PLATFORM FRAMING PLAN**

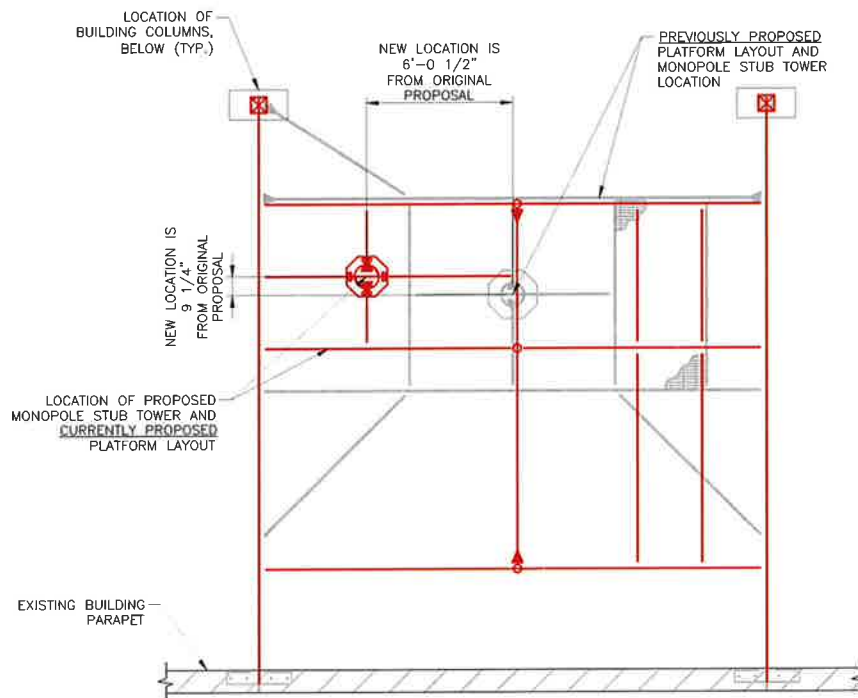
8.5X11 SCALE: 1/8" = 1'-0"



2

**CURRENTLY PROPOSED
PLATFORM FRAMING PLAN**

8.5X11 SCALE: 1/8" = 1'-0"



3

SUPERIMPOSED PLATFORM FRAMING COMPARISON

8.5X11 SCALE: 1/8" = 1'-0"

PREPARED BY:

EBI Consulting
environmental | engineering | due diligence
21 B Street | Burlington, MA 01803
Tel: (781) 273-2500 | Fax: (781) 273-3311
www.ebiconsulting.com

SITE INFO:

STAMFORD SC 3 CT
1069 EAST MAIN STREET
STAMFORD, CT 06901

SUBMITTALS

NO.	DATE	DESCRIPTION	BY
0	08/29/18	FOR REVIEW	KS

DRAWN BY:

EBI JOB NO:

CHECKED BY:

SHEET NO:

DATE:

08/25/18

SK-1