



STATE OF CONNECTICUT

CONNECTICUT SITING COUNCIL

Ten Franklin Square, New Britain, CT 06051

Phone: (860) 827-2935 Fax: (860) 827-2950

E-Mail: siting.council@ct.gov

www.ct.gov/esc

October 4, 2018

Kenneth C. Baldwin, Esq.
Robinson & Cole
280 Trumbull Street
Hartford, CT 06103-3597

RE: **PETITION NO. 1303** - Cellco Partnership d/b/a Verizon Wireless declaratory ruling that no Certificate of Environmental Compatibility and Public Need is required for the proposed installation of a wireless telecommunications facility on the roof of the existing commercial building located at 1069 East Main Street, Stamford Connecticut.

Dear Attorney Baldwin:

The Connecticut Siting Council (Council) is in receipt of your correspondence dated October 3, 2018, regarding minor changes to the above-referenced project that was approved by the Council on July 24, 2017. The minor project changes consist of the redesign and relocation of a steel rooftop equipment frame that will support Cellco's antennas and equipment cabinets. The equipment frame will be relocated approximately six feet to the west to avoid existing rooftop equipment and a roof access hatch.

Pursuant to Condition No. 1 of the Council's July 24, 2017 Declaratory Ruling, your request for the minor project changes, as detailed in your October 3, 2018 correspondence, is hereby approved.

This approval applies only to the minor project changes described in your October 3, 2018 correspondence. Any significant changes to the project require advance Council notification and approval.

Thank you for your attention and cooperation.

Sincerely,

Melanie A. Bachman
Executive Director

c: Council Members
The Honorable David Martin, Mayor, City of Stamford
Ralph Blessing, Land Use Bureau Chief, City of Stamford
1069 East Main Street LLC, Property Owner



CONNECTICUT SITING COUNCIL

Affirmative Action / Equal Opportunity Employer

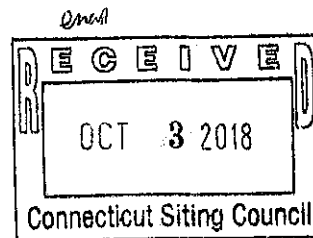
KENNETH C. BALDWIN

280 Trumbull Street
Hartford, CT 06103-3597
Main (860) 275-8200
Fax (860) 275-8299
kbaldwin@rc.com
Direct (860) 275-8345

Also admitted in Massachusetts

October 3, 2018

Melanie A. Bachman, Esq.
Executive Director/Staff Attorney
Connecticut Siting Council
10 Franklin Square
New Britain, CT 06051



Re: Petition No. 1303 – 1069 East Main Street, Stamford, Connecticut

Dear Attorney Bachman:

In preparation for the installation of the facility approved in Petition No. 1303, the Cellco Partnership d/b/a Verizon Wireless (Cellco) construction team determined that the location for the roof-top tower and equipment cabinets needed to be shifted slightly (approximately six (6) feet) to the west of the approved location. To accommodate this shift, the steel mounting platform has been reconfigured. These modifications are required so that Cellco can provide some additional clearance between its equipment and existing equipment on the roof and to accommodate the landlord's need to modify an existing roof hatch. Attached is a sketch from EBI Consulting depicting the shift in location and reconfiguration of Cellco's tower and equipment platform. The modified facility will be constructed in accordance with all applicable State and local codes.

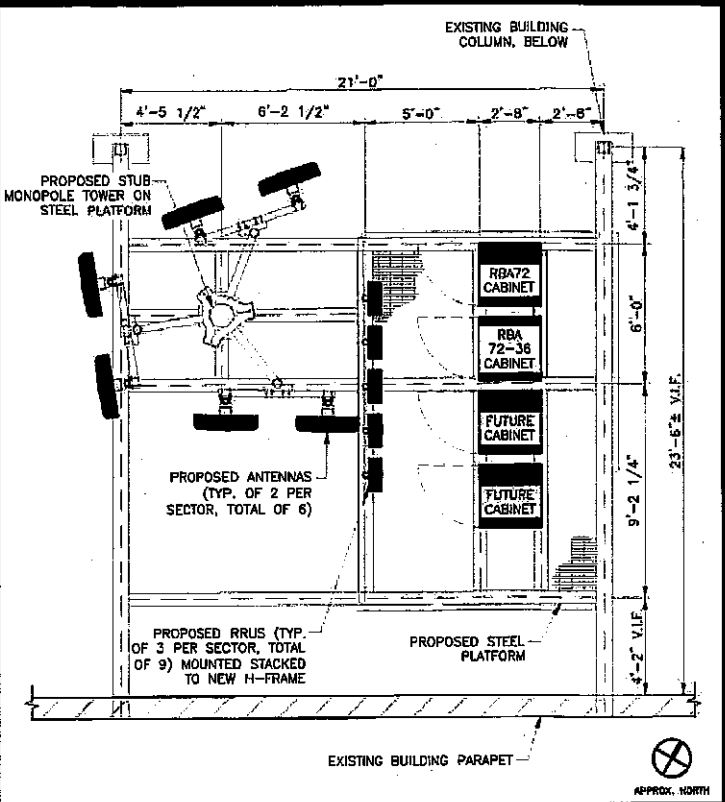
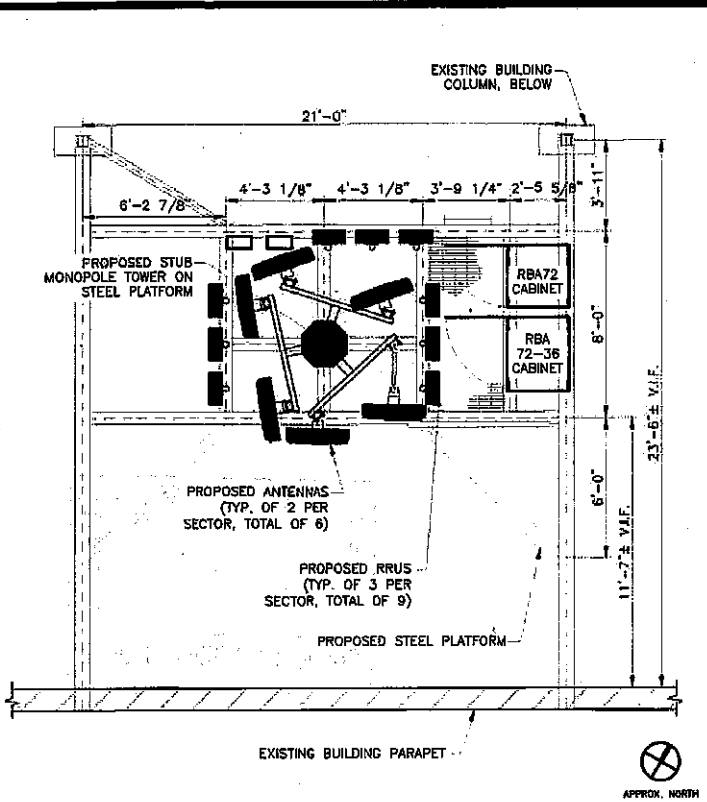
If you have any questions or need any additional information regarding this facility please do not hesitate to contact me.

Sincerely,

Kenneth C. Baldwin

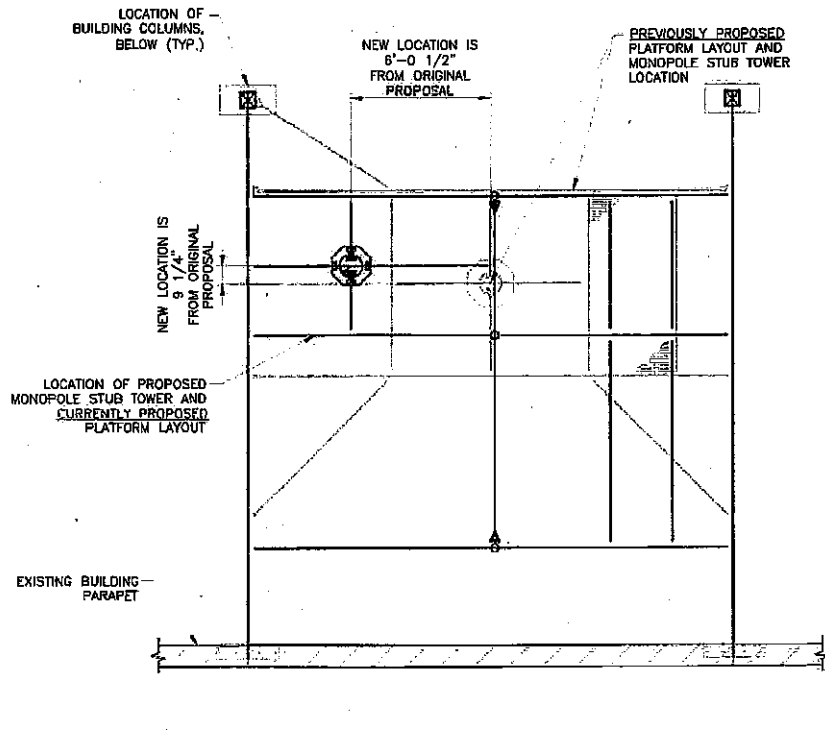
Attachment

Copy to: John Tierney, Verizon Wireless



1 PREVIOUSLY PROPOSED PLATFORM FRAMING PLAN 8.5X11 SCALE: 1/8" = 1'-0"

2 CURRENTLY PROPOSED PLATFORM FRAMING PLAN 8.5X11 SCALE: 1/8" = 1'-0"



NOTES:
 1. PROPOSED EQUIPMENT, HANDRAILS, STAIRS/LADDERS, AND GRATING ARE NOT SHOWN FOR CLARITY.
 2. THE LENGTH OF THE PREVIOUSLY PROPOSED PLATFORM HAS BEEN CORRECTED FROM 26' TO 23'-6" TO MATCH BUILDING COLUMN SPACING DIMENSIONS. ADJUSTMENT IS IN KEEPING WITH THE ORIGINAL DESIGN INTENT.
 3. FRAMING AND EQUIPMENT SHOWN ON THIS EXHIBIT IS INTENDED AS A SCHEMATIC REPRESENTATION ONLY. REFER TO CONSTRUCTION DRAWINGS BY EBI CONSULTING FOR MORE DETAILED INFORMATION.

3 SUPERIMPOSED PLATFORM FRAMING COMPARISON 8.5X11 SCALE: 1/8" = 1'-0"

PREPARED BY:
EBI Consulting
 environmental | engineering | due diligence
 21 B Street | Burlington, MA 01803
 Tel: (781) 273-2500 | Fax: (781) 273-3311
 www.ebiconsulting.com

SITE INFO:
 STAMFORD SC 3 CT
 1069 EAST MAIN STREET
 STAMFORD, CT 06901

SUBMITTALS				DRAWN BY:	EBI JOB NO:
NO.	DATE	DESCRIPTION	BY	KS	8117000262
0	08/29/18	FOR REVIEW	KS	CHECKED BY:	SHEET NO:
				KB	SK-1
				DATE:	
				08/25/18	