

Kathleen M. Shanley
Manager – Transmission Siting
Tel: (860) 728-4527

August 20, 2018

Melanie Bachman, Executive Director
Connecticut Siting Council
Ten Franklin Square
New Britain, CT 06051

Re: Petition No. 1291
Towantic Line Upgrade Project: Temporary Wood Structures

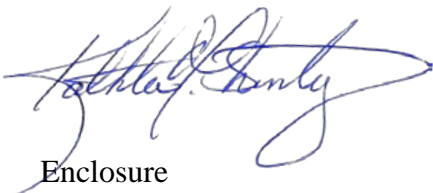
Dear Ms. Backman:

On April 28, 2017, Eversource Energy (“Eversource”) received a declaratory ruling from the Connecticut Siting Council (“Council”) that a Certificate of Environmental Compatibility and Public Need would not be required for the work proposed in Petition No. 1291 (“Petition”), subject to conditions. On February 7, 2018 Eversource received Council staff approval for the placement of a temporary 2-pole wood structure on the east side of the Route 15 South off ramp, west of Structure #832 and on April 24, 2018 Eversource received Council staff approval for the placement of a temporary 2-pole wood structure on the west side of the on ramp for Route 8 North and Route 15 North. Both structures were removed at the end of May 2018.

Eversource is requesting approval to reinstall both structures at the same locations since the wire pulling activities were not completed during the outage in April and May. See Mapsheets 15 and 16 in Attachment A for wood structure locations. The wire pulling activities will be completed during an outage in September 2018. The temporary wood structures would be installed this month and be removed by the end of September 2018.

Eversource has been coordinating with the Connecticut Department of Transportation on the location of these structures and Eversource herewith respectfully requests the Council's approval for this requested change. Enclosed please find an original and 15 copies of this submission. Should you, the Council members or Council staff have any questions regarding this request, please do not hesitate to contact me via e-mail at kathleen.shanley@eversource.com or telephone at (860)728-4527.

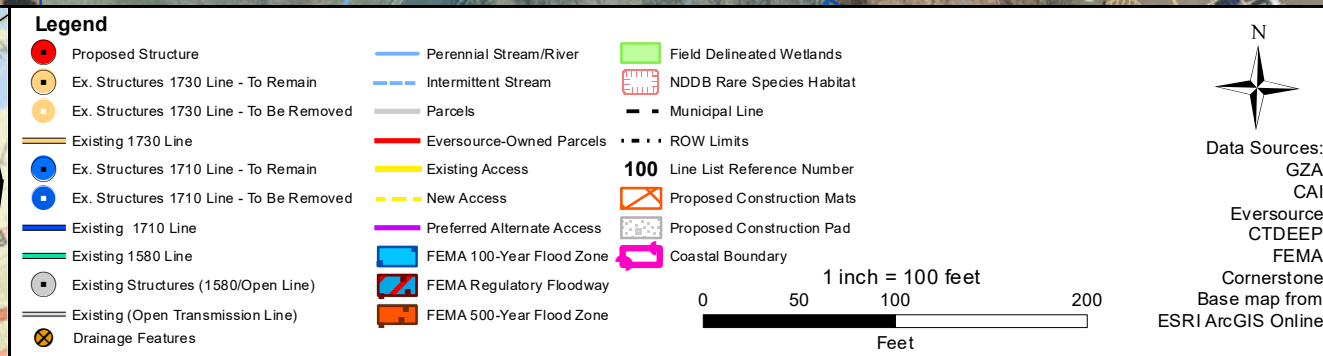
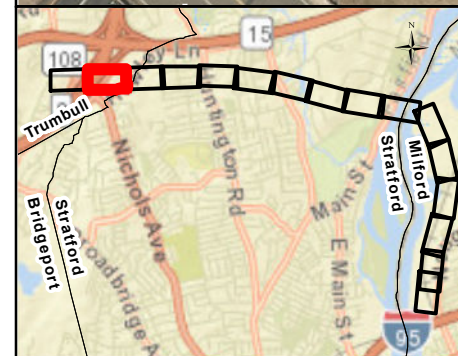
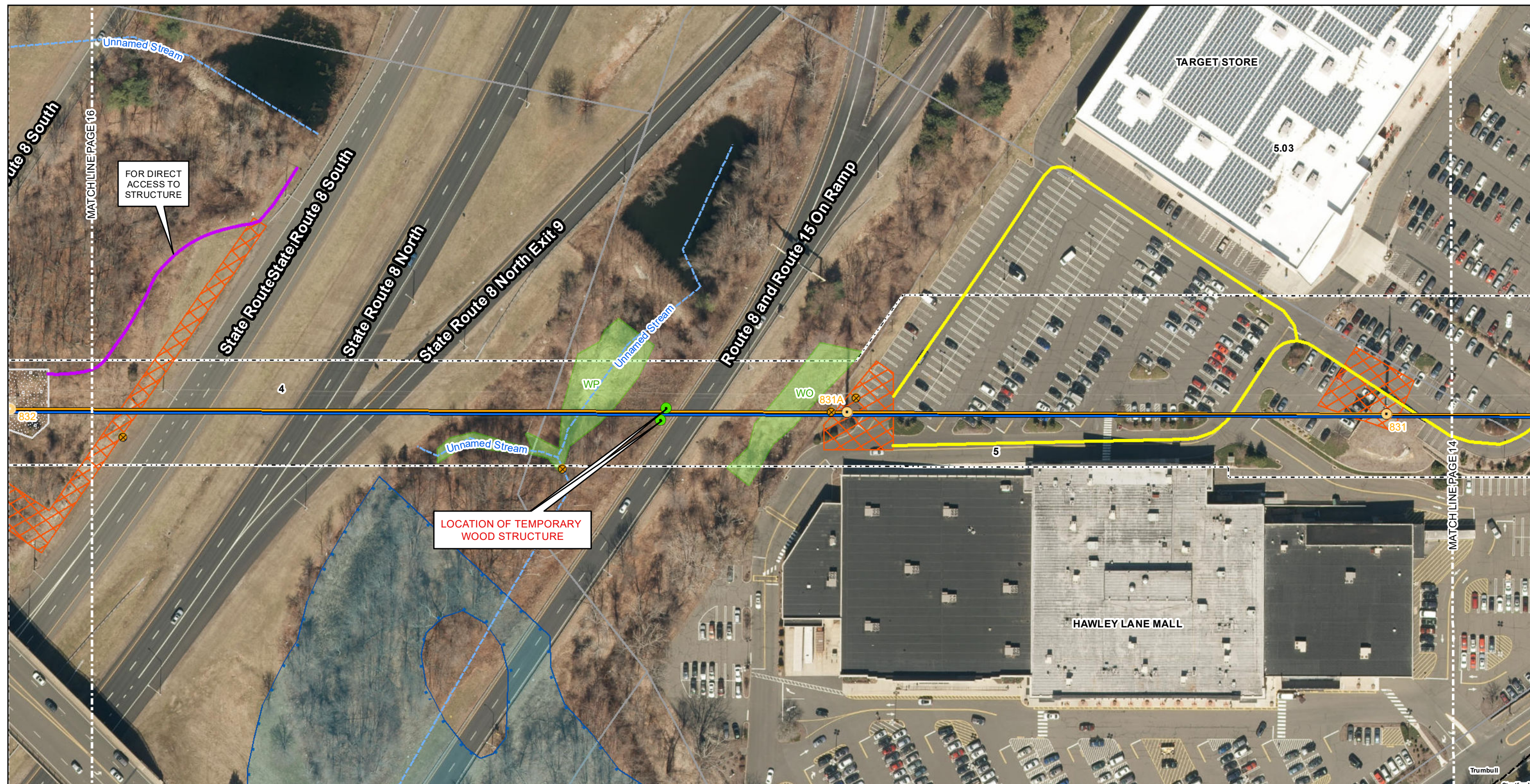
Sincerely,



Enclosure

CC: The Honorable Vicki A. Tesoro, First Selectman, Town of Trumbull
Rob Librandi, Land Use Planner, Town of Trumbull

ATTACHMENT A



**TOWANTIC 1710/1730
LINE UPGRADES PROJECT**

FEBRUARY 09, 2017
REVISED: AUGUST 17, 2018

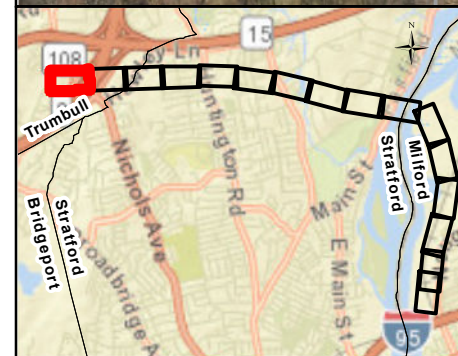
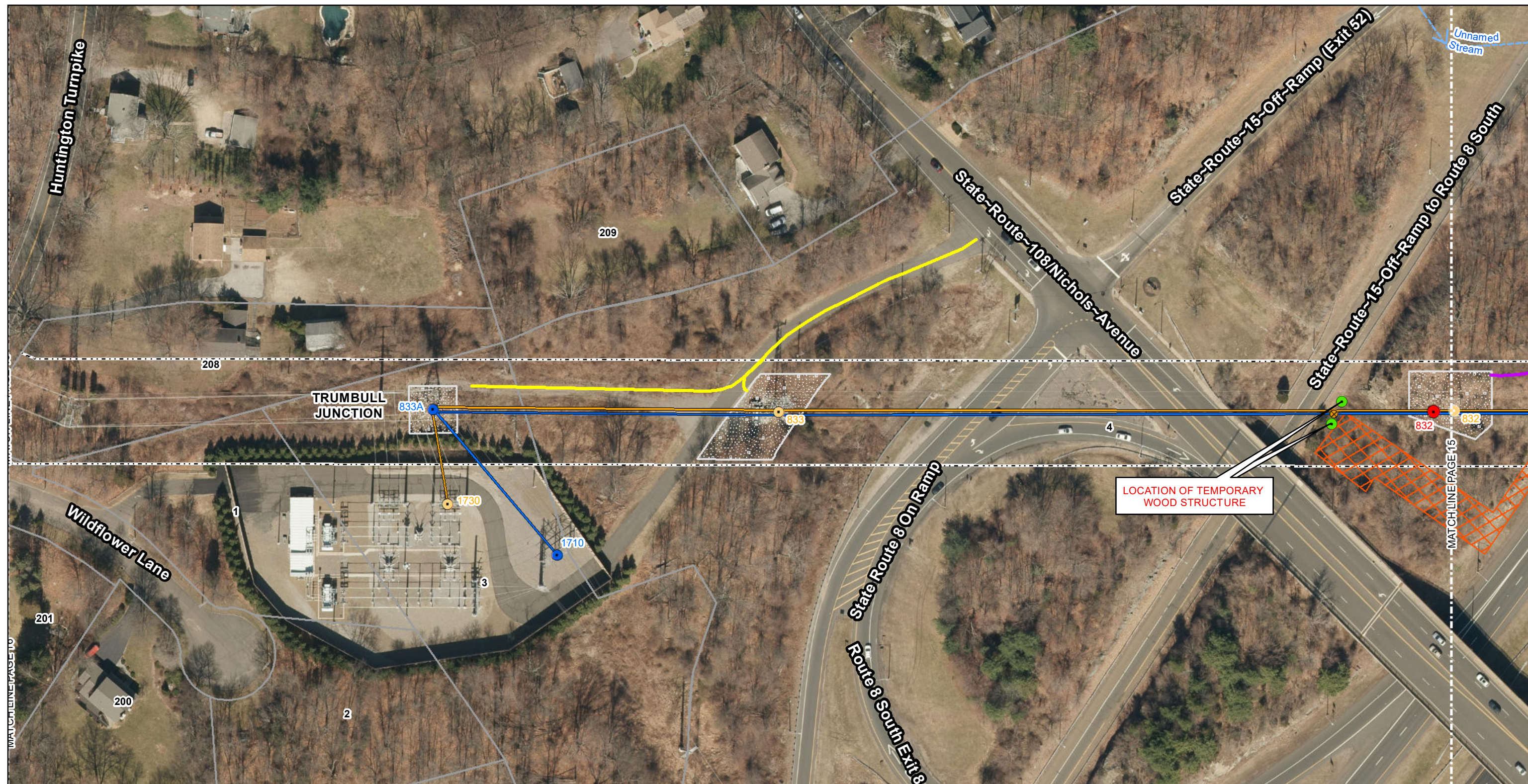
CITY OF MILFORD (NEW HAVEN COUNTY) AND TOWNS
OF STRATFORD AND TRUMBULL (FAIRFIELD COUNTY), CONNECTICUT

PAGE 15 OF 16

MUNICIPALITY: STRATFORD, TRUMBULL

EVERSOURCE
ENERGY

GZA GeoEnvironmental, Inc.
Engineers and Scientists
www.gza.com



Legend

● Proposed Structure	— Perennial Stream/River	■ Field Delineated Wetlands
● Ex. Structures 1730 Line - To Remain	- - - Intermittent Stream	■ NDDB Rare Species Habitat
● Ex. Structures 1730 Line - To Be Removed	▭ Parcels	— Municipal Line
— Existing 1730 Line	— Eversource-Owned Parcels	— ROW Limits
● Ex. Structures 1710 Line - To Remain	— Existing Access	100 Line List Reference Number
● Ex. Structures 1710 Line - To Be Removed	— New Access	▭ Proposed Construction Mats
— Existing 1710 Line	— Preferred Alternate Access	▭ Proposed Construction Pad
— Existing 1580 Line	■ FEMA 100-Year Flood Zone	— Coastal Boundary
● Existing Structures (1580/Open Line)	■ FEMA Regulatory Floodway	
— Existing (Open Transmission Line)	■ FEMA 500-Year Flood Zone	
⊗ Drainage Features		

1 inch = 100 feet

0 50 100 200 Feet

Data Sources:
GZA
CAI
Eversource
CTDEEP
FEMA
Cornerstone
Base map from
ESRI ArcGIS Online

**TOWANTIC 1710/1730
LINE UPGRADES PROJECT**

FEBRUARY 09, 2017
REVISED: AUGUST 17, 2018

CITY OF MILFORD (NEW HAVEN COUNTY) AND TOWNS
OF STRATFORD AND TRUMBULL (FAIRFIELD COUNTY), CONNECTICUT

PAGE 16 OF 16

MUNICIPALITY: STRATFORD, TRUMBULL

EVERSOURCE
ENERGY

GZA GeoEnvironmental, Inc.
Engineers and Scientists
www.gza.com