

STATE OF CONNECTICUT
CONNECTICUT SITING COUNCIL

IN RE: :
: :
A PETITION OF CELLCO PARTNERSHIP : PETITION NO. ____
D/B/A VERIZON WIRELESS FOR A : :
DECLARATORY RULING ON THE NEED TO : :
OBTAIN A SITING COUNCIL CERTIFICATE : :
FOR THE INSTALLATION OF A ROOF-TOP : :
WIRELESS TELECOMMUNICATIONS : :
FACILITY AT 19 FRANKLIN SQUARE, NEW : :
BRITAIN, CONNECTICUT : FEBRUARY 6, 2017

PETITION FOR A DECLARATORY RULING:
INSTALLATION HAVING NO
SUBSTANTIAL ADVERSE ENVIRONMENTAL EFFECT

I. Introduction

Pursuant to Sections 16-50j-38 and 16-50j-39 of the Regulations of Connecticut State Agencies (“R.C.S.A.”), Cellco Partnership d/b/a Verizon Wireless (“Cellco”) hereby petitions the Connecticut Siting Council (the “Council”) for a declaratory ruling (“Petition”) that no Certificate of Environmental Compatibility and Public Need (“Certificate”) is required under Section 16-50k(a) of the Connecticut General Statutes (“C.G.S.”) to attach a new telecommunications tower to the building at 19 Franklin Square in New Britain, Connecticut (the “Property”). The Property and building are owned by the New Britain YWCA. Cellco has designated this proposed facility as its “New Britain SC7 Facility”.

II. Factual Background

The Property is a 1.9-acre parcel in New Britain’s Central Business District (CBD) zone. See Attachment 1 – Site Vicinity and Site Schematic Maps (Aerial Photograph). Cellco is licensed to provide wireless telecommunications services in the 850 MHz, 1900 MHz, 700 MHz

and 2100 MHz frequency ranges in New Britain and throughout the State of Connecticut.

Initially, the proposed New Britain SC7 Facility described above will provide wireless service in Cellco's 1900 MHz frequency range only.

III. Proposed New Britain SC7 Facility

The proposed New Britain SC7 Facility would consist of a small tower attached to an existing chimney on the roof of the New Britain YWCA building. The tower will support a single canister antenna (Model NH-360QM-DG 1900 MHz). A remote radio head ("RRH") (Model B25-RRH4x30) and associated electrical equipment boxes would be attached to the building façade near the base of the tower. The tower and antenna will extend to a height of approximately 52'-5" above ground level (AGL); approximately 7' above the top of the existing chimney. (See Cellco's Project Plans included in Attachment 2). Power and telephone service to the New Britain SC7 Facility will extend from existing service at the Property. Specifications for the New Britain SC7 Facility antenna and RRH are included in Attachment 3.

IV. Discussion

A. The Proposed Facility Modifications Will Not Have A Substantial Adverse Environmental Effect

The Public Utility Environmental Standards Act (the "Act"), C.G.S. § 16-50g *et seq.*, provides for the orderly and environmentally compatible development of telecommunications towers in the state to avoid "a significant impact on the environment and ecology of the State of Connecticut." C.G.S. § 16-50g. To achieve these goals, the Act established the Council, and requires a Certificate of Environmental Compatibility and Public Need for the construction of cellular telecommunication towers "that may, as determined by the council, have a substantial adverse environmental effect". C.G.S. § 16-50k(a).

1. Physical Environmental Effects

Cellco respectfully submits that the installation of a small tower, attached to the roof of the existing New Britain YWCA building and supporting a single canister antenna, and the installation of a RRH and associated equipment boxes on the façade of the building, will not involve a significant alteration in the physical and environmental characteristics of the Property.

2. Visual Effects

The attachment of a small tower, supporting a canister antenna, on the roof of the New Britain YWCA building would not have an adverse impact on existing views of the building or the Property and would not impact the character of the community. (See Visual Assessment & Photo-Simulations (“Visual Assessment”) included in Attachment 4). The visibility of the proposed New Britain SC7 Facility described above is limited to locations within approximately 500’ to the east and approximately 300’ to the north of the Property. With the exception of select locations to the north along Glen Street, the tower and antenna, where visible, would be nearly indistinguishable from other roof-top attachments and appurtenance on the YWCA building and other buildings in the area. As concluded in the Visual Assessment, the proposed installation will not have an adverse visual impact on existing views of the building or the character of the community.

3. FCC Compliance

Radio frequency (“RF”) emissions from the proposed installation will be well below the standards adopted by the Federal Communications Commission (“FCC”). Included in Attachment 5 is a General Power Density table which demonstrates that Cellco’s New Britain SC7 Facility will operate well within the FCC safety limits (7.02% of the Standard).

4. FAA Summary Report

Included in Attachment 6 is a Federal Airways & Airspace Summary Report (the “FAA Report”) verifying that the tower and antenna attached to the building at the Property would not constitute an obstruction or hazard to air navigation and that notification to the FAA is not required.

B. Notice to the Town, Property Owner and Abutting Landowners

On February 6, 2017, a copy of this Petition was sent to New Britain’s Mayor Erin Stewart and to New Britain YWCA, the owner of the Property. Copies of the letters sent to the Mayor Stewart and the New Britain YWCA are included in Attachment 7. A copy of Cellco’s Petition was also sent to the owners of land that abuts the Property. A sample abutter’s letter, and the list of those abutting landowners who were sent notice of the filing of the Petition is included in Attachment 8.

V. Conclusion

Based on the information provided above, Cellco respectfully requests that the Council issue a determination in the form of a declaratory ruling that the installation of a small tower, supporting a single panel antenna on the roof of the New Britain YWCA building will not have a substantial adverse environmental effect and does not require the issuance of a Certificate of Environmental Compatibility and Public Need pursuant to § 16-50k of the General Statutes.

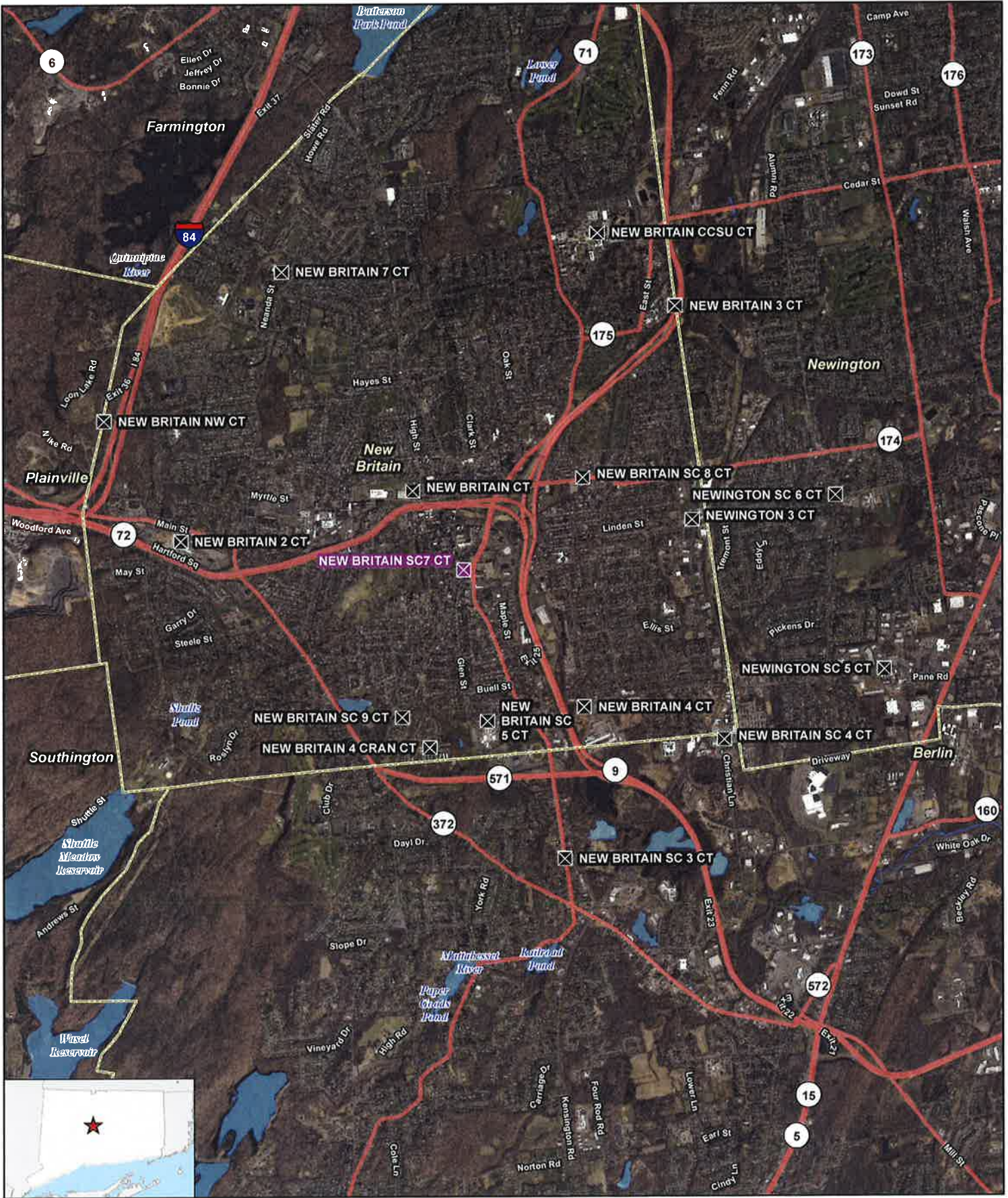
Respectfully submitted,

CELLCO PARTNERSHIP d/b/a VERIZON
WIRELESS

By  _____

Kenneth C. Baldwin, Esq.
Robinson & Cole LLP
280 Trumbull Street
Hartford, CT 06103-3597
(860) 275-8200
Its Attorneys

ATTACHMENT 1

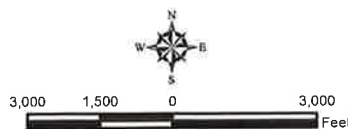


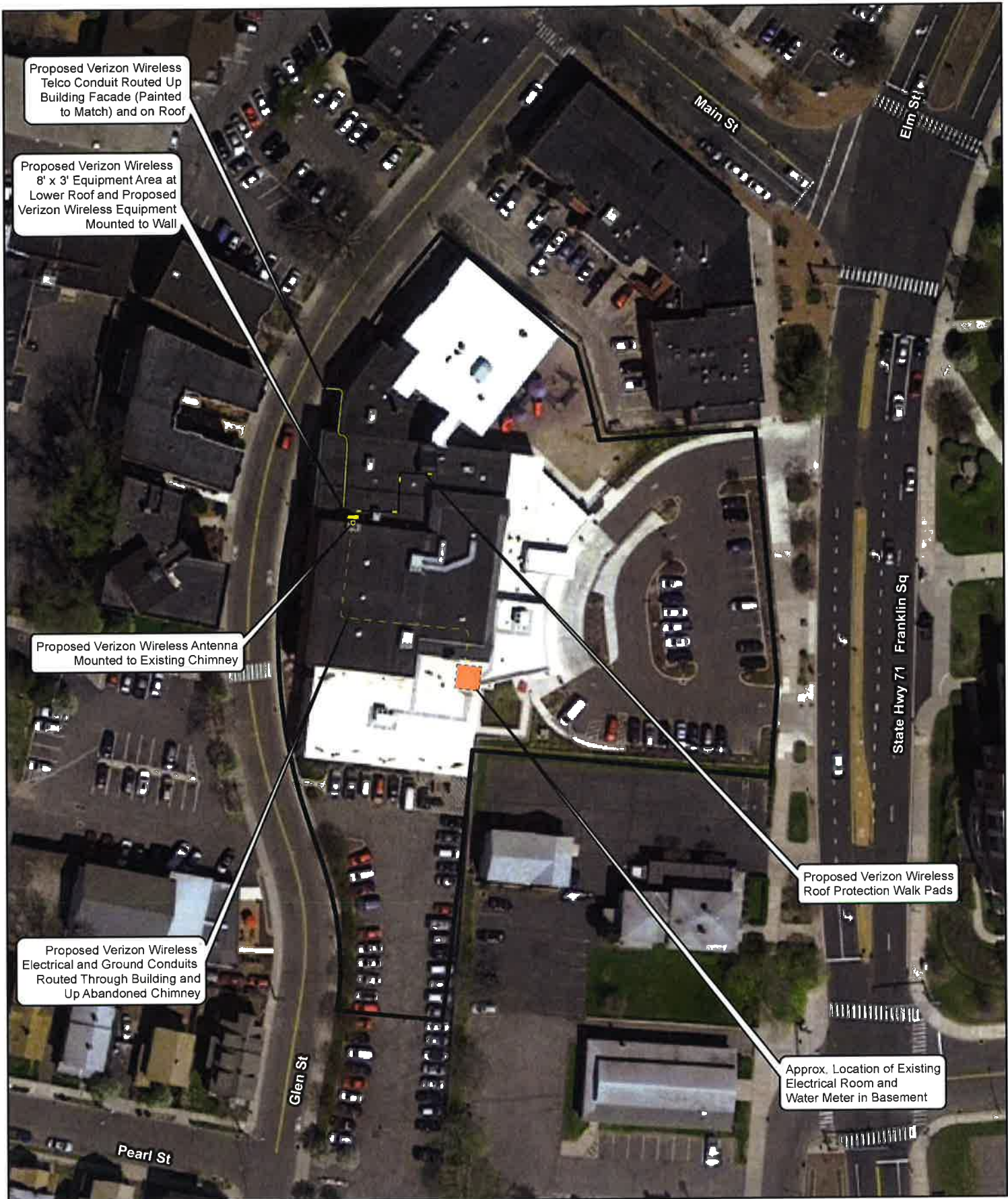
- Legend**
- ✕ Proposed Verizon Wireless Facility
 - ✕ Surrounding Verizon Wireless Facilities
 - Municipal Boundary

Site Vicinity Map

Proposed Wireless Telecommunications Facility
 New Britain SC 7 CT
 YWCA
 19 Franklin Square
 New Britain, Connecticut

Base Map Source: 2012 Aerial Photograph (CTECO)
 Map Scale: 1 inch = 4,000 feet
 Map Date: January 2017





Legend

- ⊙ Proposed Verizon Wireless Antenna
- ▭ Proposed Verizon Wireless Equipment Area
- Proposed Verizon Wireless Roof Protection Walk Pads
- Proposed Verizon Wireless Electrical and Ground Conduit
- Proposed Verizon Wireless Telco Conduit
- Approximate Parcel Boundary (CTDEEP GIS Parcels Last Updated 2010)

- ⊞ Existing Electrical Room
- ▭ Subject Property



Map Notes:
 Base Map Source: 2016 Google Imagery
 Map Scale: 1 inch = 80 feet
 Map Date: January 2017

Site Schematic

Proposed Wireless Telecommunications Facility
 New Britain SC7 CT
 YWCA
 19 Franklin Square
 New Britain, Connecticut



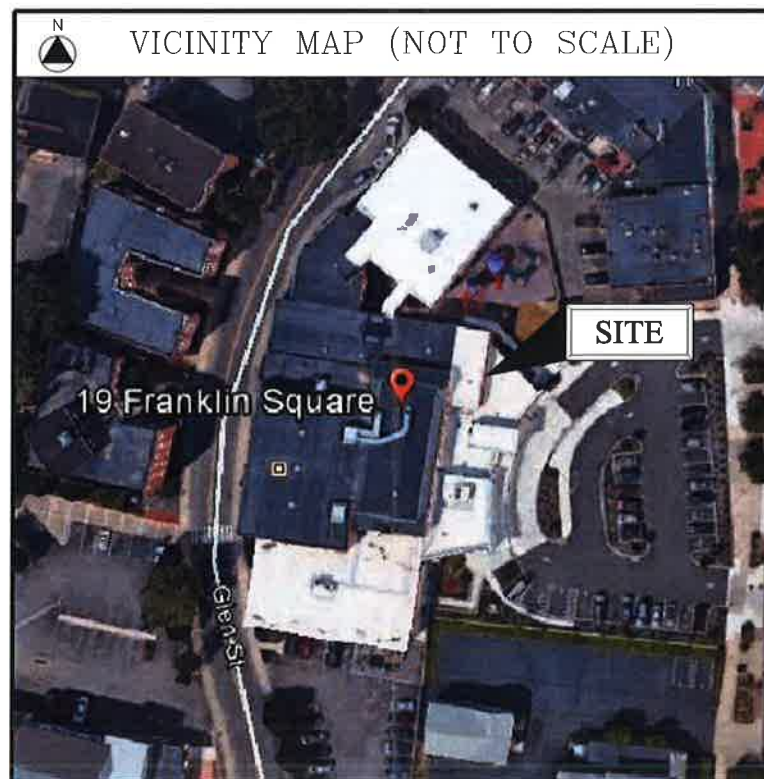
ATTACHMENT 2



WIRELESS COMMUNICATIONS FACILITY

SITE NAME: NEW BRITAIN SC7 CT

YWCA
 19 FRANKLIN SQUARE
 NEW BRITAIN, CT 06051
 SMALL CELL ROOFTOP



PROJECT DESCRIPTION	
-	INSTALLATION OF (1) SMALL CELL ANTENNA PIPE MOUNTED TO THE BUILDING FACADE
-	INSTALLATION OF SMALL CELL EQUIPMENT CABINETS ON THE ROOF BUILDING FACADE
-	ELECTRICAL, TELEPHONE & GROUNDING CONNECTIONS TO EXISTING UTILITIES

PROJECT SUMMARY	
SITE NAME:	NEW BRITAIN SC7 CT
SITE ADDRESS:	YWCA 19 FRANKLIN SQUARE NEW BRITAIN, CT 06051
PROPERTY OWNER:	YOUNG WOMENS CHRISTIAN ASSOC. 19 FRANKLIN SQUARE NEW BRITAIN, CT 06051
PARCEL ID:	C8C 145
SITE COORDINATES:	41° 39' 50.390" N 72° 46' 51.916" W
APPLICANT:	CELLCO PARTNERSHIP d.b.a. VERIZON WIRELESS 99 EAST RIVER DR., 9TH FL. EAST HARTFORD, CT 06108
VERIZON WIRELESS CONTACTS:	BRYON MORAWSKI - CONSTR. (860) 60-9142 STEVE SCHADLER - SAC (508) 887-0357
LEGAL/REGULATORY COUNSEL:	KENNETH C. BALDWIN, ESQ. ROBINSON & COLE, LLP (860) 275-8345

DRAWING SCHEDULE	
SHEET NO.	SHEET DESCRIPTION
T-1	TITLE SHEET
C-1	PARTIAL ROOF PLAN
C-2	PARTIAL WEST ELEVATION, EQUIPMENT ELEVATION & DETAILS
C-3	ABUTTERS MAP & PROPERTY OWNER LIST

Cellco Partnership
 d/b/a Verizon Wireless

 WIRELESS COMMUNICATIONS FACILITY
 99 EAST RIVER DRIVE
 EAST HARTFORD, CT 06108

On Air Engineering, LLC
 88 Foundry Pond Rd.
 Cold Spring, NY 10516
 onair@optonline.net
 201-456-4624

LICENSURE

 DAVID WEINPAHL, P.E.
 CT LIC. NO. 22144

NO.	DATE	SUBMISSIONS
0	01.04.17	REVIEW
1	01.31.17	SITING COUNCIL FILING

DRAWN BY: AS
 CHECKED BY: DW

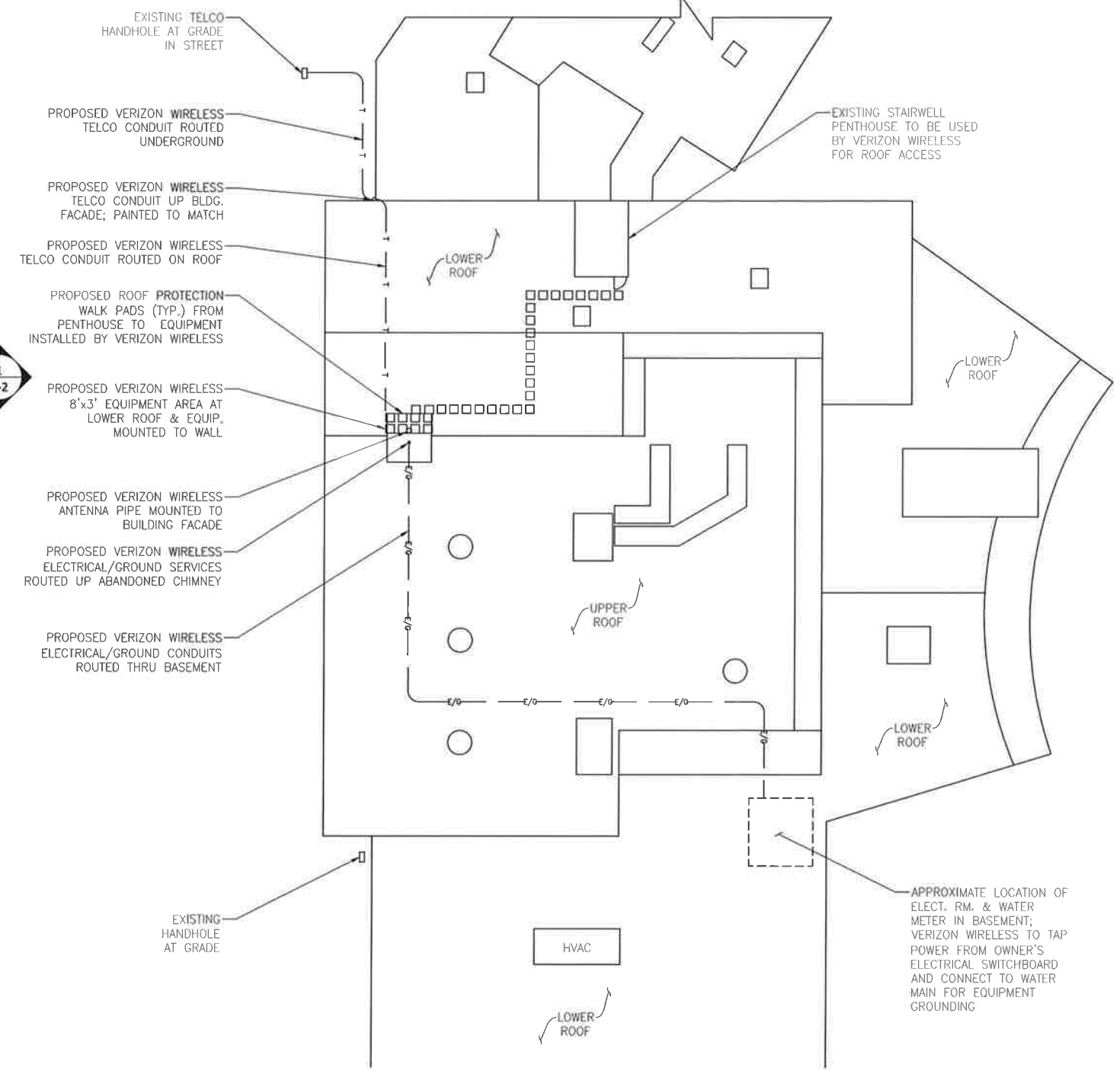
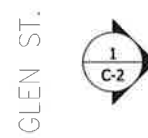
SITE NAME:
 NEW BRITAIN SC7 CT

PROJECT DESCRIPTION:
 SMALL CELL

PROJECT INFORMATION:
 YWCA
 19 FRANKLIN SQ.
 NEW BRITAIN, CT 06051

DRAWING TITLE:
 TITLE SHEET

SHEET NUMBER:
 T-1



1
C-1 PARTIAL ROOF PLAN
Scale: 1/16" = 1'-0"

Cellco Partnership
d/b/a Verizon Wireless

verizon

WIRELESS COMMUNICATIONS FACILITY
99 EAST RIVER DRIVE
EAST HARTFORD, CT 06108

On Air Engineering, LLC
88 Foundry Pond Rd.
Cold Spring, NY 10516
onair@optonline.net
201-456-4624

LICENSURE

DAVID WEINPAHL, P.E.
CT LIC. NO. 22144

NO.	DATE	SUBMISSIONS
0	01.04.17	REVIEW
1	01.31.17	SITING COUNCIL FILING

DRAWN BY: **AS** CHECKED BY: **DW**

SITE NAME:
NEW BRITAIN SC7 CT

PROJECT DESCRIPTION:
SMALL CELL

PROJECT INFORMATION:
**YWCA
19 FRANKLIN SQ.
NEW BRITAIN, CT 06051**

DRAWING TITLE:
PARTIAL ROOF PLAN

SHEET NUMBER:
C-1

ATTACHMENT 3



NH360QM-DG-2XR

Andrew® Dualband Quasi Omni Metro Cell Antenna, 698-896 and 1695-2200 MHz, internal RETs with manual override, internal diplexer and active GPS L1 band antenna

Electrical Specifications

Frequency Band, MHz	698-806	806-896	1695-1880	1850-1990	1920-2200
Gain, dBi	6.1	7.1	9.7	9.9	9.9
Beamwidth, Horizontal, degrees	360	360	360	360	360
Beamwidth, Vertical, degrees	28.6	25.4	11.2	10.6	10.1
Beam Tilt, degrees	0-20	0-20	0-14	0-14	0-14
USLS (First Lobe), dB	16	15	14	13	13
Isolation, dB	25	25	25	25	25
VSWR Return Loss, dB	1.5 14.0	1.5 14.0	1.5 14.0	1.5 14.0	1.5 14.0
PIM, 3rd Order, 2 x 20 W, dBc	-153	-153	-153	-153	-153
Input Power per Port, maximum, watts	125	125	125	125	125
Polarization	±45°	±45°	±45°	±45°	±45°
Impedance	50 ohm	50 ohm	50 ohm	50 ohm	50 ohm

Electrical Specifications, BASTA*

Frequency Band, MHz	698-806	806-896	1695-1880	1850-1990	1920-2200
Gain by all Beam Tilts, average, dBi	5.4	6.3	9.3	9.4	9.4
Gain by all Beam Tilts Tolerance, dB	±1	±0.7	±0.5	±0.7	±0.7
	0° 5.1	0° 6.3	0° 9.2	0° 9.3	0° 9.4
Gain by Beam Tilt, average, dBi	10° 5.4	10° 6.3	7° 9.3	7° 9.5	7° 9.6
	20° 5.6	20° 6.0	14° 9.2	14° 9.1	14° 9.1
Beamwidth, Vertical Tolerance, degrees	±3.7	±3.2	±0.9	±1.1	±1.1
USLS, beampeak to 20° above beampeak, dB			13	13	13

* CommScope® supports NGMN recommendations on Base Station Antenna Standards (BASTA). To learn more about the benefits of BASTA, [download the whitepaper Time to Raise the Bar on BSAs.](#)

General Specifications

Antenna Brand	Andrew®
Antenna Type	Metro Cell
Band	Multiband
Brand	DualPol®
Operating Frequency Band	1695 - 2200 MHz 698 - 896 MHz
Internal GPS frequency band	1575.42 MHz
Internal GPS VSWR	2.0
Performance Note	Outdoor usage

Mechanical Specifications

Color	Light gray
GPS Connector Interface	4.1-9.5 DIN Female
GPS Connector Quantity	1

NH360QM-DG-2XR

POWERED BY



Lightning Protection	dc Ground
Radiator Material	Aluminum Low loss circuit board
Radome Material	ASA
Reflector Material	Aluminum
RF Connector Interface	7-16 DIN Female
RF Connector Location	Bottom
RF Connector Quantity, total	2
Wind Loading, maximum	225.0 N @ 150 km/h 50.6 lbf @ 150 km/h
Wind Speed, maximum	241 km/h 150 mph

Dimensions

Length	982.0 mm 38.7 in
Outer Diameter	305.0 mm 12.0 in
Net Weight, without mounting kit	15.3 kg 33.7 lb

Remote Electrical Tilt (RET) Information

Input Voltage	10–30 Vdc
Power Consumption, idle state, maximum	2.0 W
Power Consumption, normal conditions, maximum	13.0 W
Protocol	3GPP/AISG 2.0 (Single RET)
RET Interface	8-pin DIN Male
RET Interface, quantity	1 male

Packed Dimensions

Depth	407.0 mm 16.0 in
Length	1251.0 mm 49.3 in
Width	427.0 mm 16.8 in
Shipping Weight	20.6 kg 45.4 lb

Regulatory Compliance/Certifications

Agency

RoHS 2011/65/EU
China RoHS SJ/T 11364-2006
ISO 9001:2008

Classification

Compliant by Exemption
Above Maximum Concentration Value (MCV)
Designed, manufactured and/or distributed under this quality management system



* Footnotes

Performance Note Severe environmental conditions may degrade optimum performance

ALCATEL-LUCENT B25 RRH4X30

Alcatel-Lucent Band 25 Remote Radio Head 4x30W is the new addition of Remote Radio Head to the extended product line of Alcatel-Lucent's distributed Base Station solutions, aimed at facilitating smooth RF site acquisition and related civil engineering.

Supporting 2Tx/4Tx MIMO and 4-way Rx diversity, Alcatel-Lucent B25 RRH4x30 allows operators to have a compact radio solution to deploy LTE in the PCS band (1.9 GHz, 3GPP band 25), providing them with the means to achieve high capacity, high quality and high coverage with minimum site requirements.

The Alcatel-Lucent B25 RRH4x30 product has four transmit RF paths, offering the possibility to **select, via software only, 2Tx or 4Tx MIMO configurations** with either 2x60 W or 4x30 W RF output power. It supports also 4-way Rx diversity, LTE carriers from 3 MHz up to 20 MHz and up to 65 MHz instantaneous bandwidth.

The Alcatel-Lucent B25 RRH4x30 is a near zero-footprint solution and operates noise free, simplifying negotiations with site property owners and minimizing environmental impacts.

Its compactness and slim design makes the Alcatel-Lucent B25 RRH4x30 easy to install close to the antenna: operators can therefore locate this Remote Radio Head where RF design conditions are deemed ideal, minimizing trade-offs between available sites and RF optimum sites, together with reducing the RF feeder needs and installation costs.

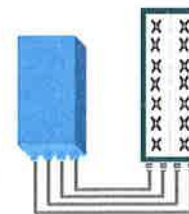


FEATURES

- Supporting LTE in 1.9 GHz band (PCS, 3GPP band 2 & 25)
- LTE 2Tx or 4Tx MIMO (SW switchable)
- Output power: Up to 2x60W or 4x30W
- Ready for 3, 5, 10, 15 or 20MHz LTE carrier operation with 4Rx Diversity
- Ready to support up to 4 carriers anywhere in 65MHz instantaneous bandwidth
- Convection-cooled (fan-less)
- Supports AISG 2.0 devices (RET, TMA) through RS485 or RF ports

BENEFITS

- Compact to reduce additional footprint when adding LTE in PCS band
- MIMO scheme operation selection (2Tx or 4Tx) by software only
- Full flexibility for multiple carriers operation over entire PCS spectrum
- Improves downlink spectral efficiency and cell edge throughput through MIMO4
- Increases LTE coverage thanks to 4-way Rx diversity capability and best in class Rx sensitivity
- Flexible mounting options (Pole or Wall)



4x30W with 4T4R
or
2x60W with 2T4R

Can be switched between modes via SW w/o site visit

TECHNICAL SPECIFICATIONS

Features & performance	
Number of TX/RX paths	4 duplexed (either 4T4R or 2T4R by SW)
Frequency band	3GPP bands 2 & 25 (PCS-G) DL: 1930 - 1995 MHz UL: 1850 - 1915 MHz
Instantaneous bandwidth - #carriers	65MHz – Up to 4 LTE carriers (in 40MHz occupied bandwidth)
LTE carrier bandwidth	3, 5, 10, 15 or 20 MHz
RF output power	2x60W or 4x30W (by SW)
Noise figure (3GPP band 2)	2.0 dB typ. (<2.5 dB max)
RX Diversity scheme	2 or 4 way Rx diversity
Sizes (HxWxD)(w/ solar shield) in mm (in.)	538 x 304 x 182 (21.2" x 12.0" x 7.2")
Volume (w/ solar shield) in L	30
Weight (w/ solar shield) in kg (lb)	24 (53)
DC voltage range	-40.5 to -57V at full performance, -38 to -57V with relaxation on power consumption
DC power consumption	580W typical @100% RF load
Environmental conditions	-40°C (-40°F) / +55°C (+131°F) IP65
Wind load (@150km/h or 93mph)	Frontal: <200N / Lateral : <150N
Antenna ports	4 ports 7/16 DIN female (50 ohms) VSWR < 1.5 (> 14dB)
CPRI ports	2 CPRI ports (HW ready for Rate7 / 9.8 Gbps)
AISG interfaces	1 AISG2.0 output (RS485), +24V/2A DC power Integrated Smart Bias Tees (x2)
Misc. Interfaces	1 external alarms connector (4 alarms) 4 RF Tx & 4 RF Rx monitor ports 1 DC connector (2 pins)
Installation conditions	Pole and wall mounting
Regulatory compliance	3GPP 36.141 / 3GPP 36.113 / GR-1089-CORE / GR-3108-CORE / UL 60950-1 / FCC Part 27

www.alcatel-lucent.com Alcatel, Lucent, Alcatel-Lucent and the Alcatel-Lucent logo are trademarks of Alcatel-Lucent. All other trademarks are the property of their respective owners. The information presented is subject to change without notice. Alcatel-Lucent assumes no responsibility for inaccuracies contained herein.
Copyright © 2014 Alcatel-Lucent. All Rights Reserved

ATTACHMENT 4

Visual Assessments & Photo-Simulations



NEW BRITAIN SC7
YWCA
19 FRANKLIN SQUARE
NEW BRITAIN, CT 06051

Prepared in January 2017 by:
All-Points Technology Corporation, P.C.
3 Saddlebrook Drive
Killingworth, CT 06419

Prepared for Verizon Wireless



VISUAL ASSESSMENT & PHOTO-SIMULATIONS

At the request of Cellco partnership LLC d/b/a Verizon Wireless, All-Points Technology Corporation, P.C. ("APT") completed this visual assessment and prepared computer-generated photo-simulations depicting the proposed installation of a small cell wireless telecommunications Facility at 19 Franklin Square in New Britain, Connecticut (the "Host Property").

Project Setting

The Host Property is located on the west side of Franklin Square (State Highway 71), east of Glen Street and south of Main Street. The Host Property is currently developed with the New Britain YMCA, a two and three-story brick building. The proposed Facility would be centrally located on the building's lower roof and include a pipe-mast mounted canister antenna affixed to the upper roof's sidewall and an existing chimney. The mast and omni antenna would extend approximately 11 feet above the upper roof and about seven (7) feet above the chimney. Supporting appurtenances and equipment would be located at the base of the brick façade, approximately six (6) feet above the lower roof. A cable tray would route electrical/telco connections from a utility room in the basement vertically up the west side of the exterior wall to the roof. The conduit would be painted to match the brick exterior building façade.

Methodology

On January 27, 2017, APT personnel conducted field reconnaissance and photo-documented existing conditions. Six (6) nearby locations were selected to depict existing and proposed conditions associated with the new installation. At each photo location, the geographic coordinates of the camera's position were logged using global positioning system ("GPS") technology. Photographs were taken with a Canon EOS 6D digital camera body and Canon EF 24 to 105 millimeter ("mm") zoom lens, with the lens set to 50 mm to present a consistent field of view.

Three-dimensional computer models were developed for the building and proposed small cell components from AutoCAD information. Photographic simulations were then generated to portray scaled renderings of the proposed installation. Using field data, site plan information and image editing software, the proposed Facility was scaled to the correct location and height, relative to the existing structure and surrounding area. A photolog map and copies of the existing conditions and photo-simulations are attached.

The photo locations were chosen in the field because they presented generally unobstructed view lines towards at least a portion of the building and represent the approximate limits of visibility associated with the proposed installation. Photo-simulations were prepared for three (3) of the views, where the facility will be visible, to depict the proposed installation. The photo-simulations are static in nature and do not necessarily fairly characterize the prevailing views from all locations within a given area. The simulations provide a representation of the proposed Facility under similar settings as those encountered during the field reconnaissance. Views of the Facility can change substantially throughout the seasons as well as the time of day, and are dependent on weather and other atmospheric conditions including but not necessarily limited to haze, fog, and clouds; the location, angle and intensity of the sun; light conditions, and the specific viewer location.

Conclusions

The visibility of the proposed installation would be limited to nearby locations within ± 500 feet to the east and ± 300 to the north, where at least a portion of the building and existing roof-top equipment can be seen today. Locations to the south and west will not have direct lines of sight towards the proposed facility. With the exception of select locations to the north along Glen Street, the facility (where visible) would be nearly indistinguishable from surrounding rooftop features. Those views from Glen Street are the only locations where the antenna would protrude above the existing roof without a backdrop of other infrastructure.

Based on the results of this assessment, it is our opinion that the proposed installation of the Verizon Wireless communications facility will not have an adverse visual impact on existing views of this building or the character of the community.

ATTACHMENTS



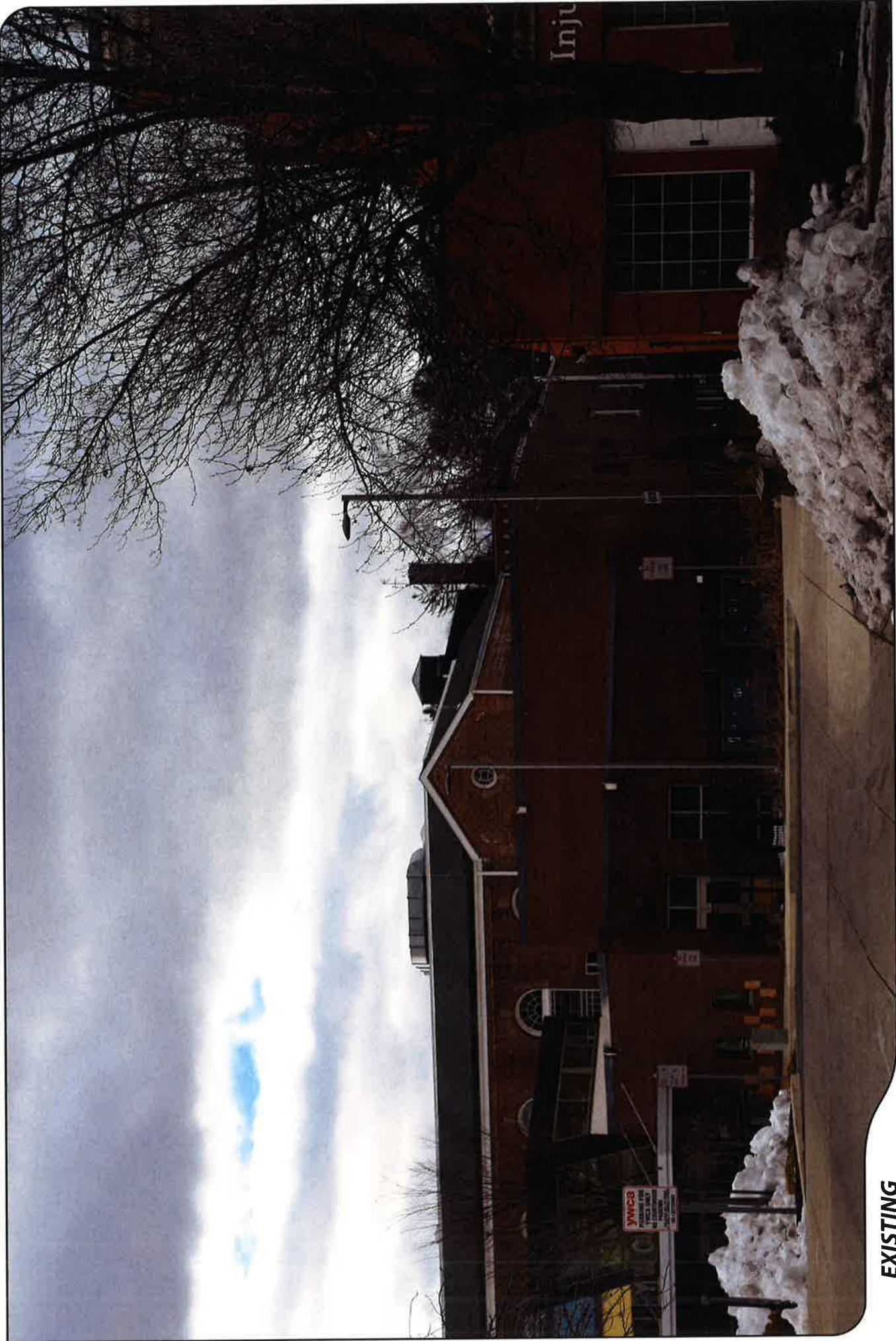
PHOTO LOG

Legend

- Site
- Year-Round Visibility
- Not Visible



verizon



EXISTING

PHOTO

1

LOCATION

FRANKLIN SQUARE

ORIENTATION

SOUTHWEST

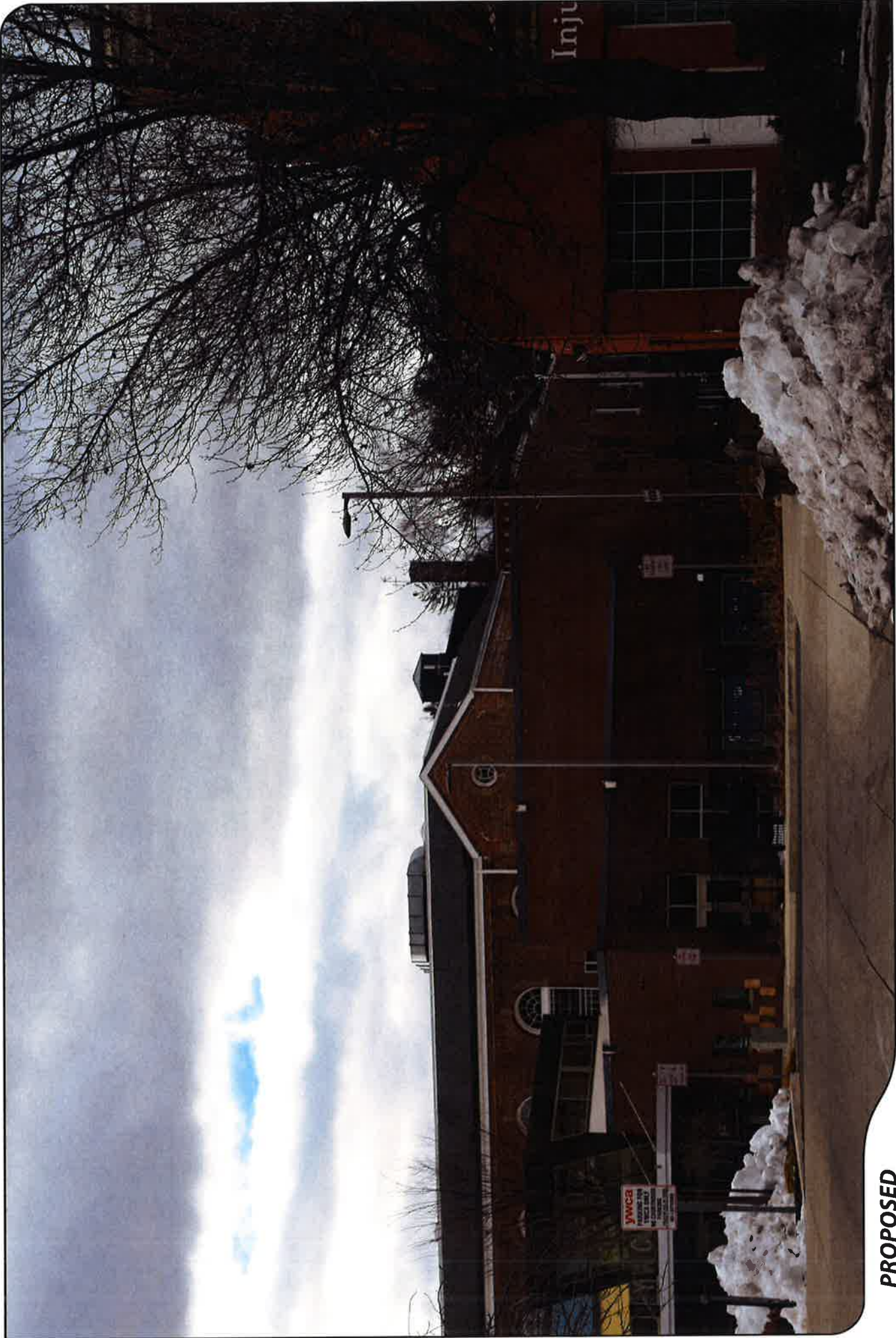
DISTANCE TO SITE

+/- 360 FEET



ALL-POINTS
TECHNOLOGY CORPORATION

verizon



PROPOSED

PHOTO

1

LOCATION

FRANKLIN SQUARE

ORIENTATION

SOUTHWEST

DISTANCE TO SITE

+/- 360 FEET



ALL-POINTS
TECHNOLOGY CORPORATION

verizon



EXISTING

PHOTO

2

LOCATION

FAMILY SERVICES SUPERIOR COURT

ORIENTATION

WEST

DISTANCE TO SITE

+/- 459 FEET





PROPOSED

PHOTO

2

LOCATION

FAMILY SERVICES SUPERIOR COURT

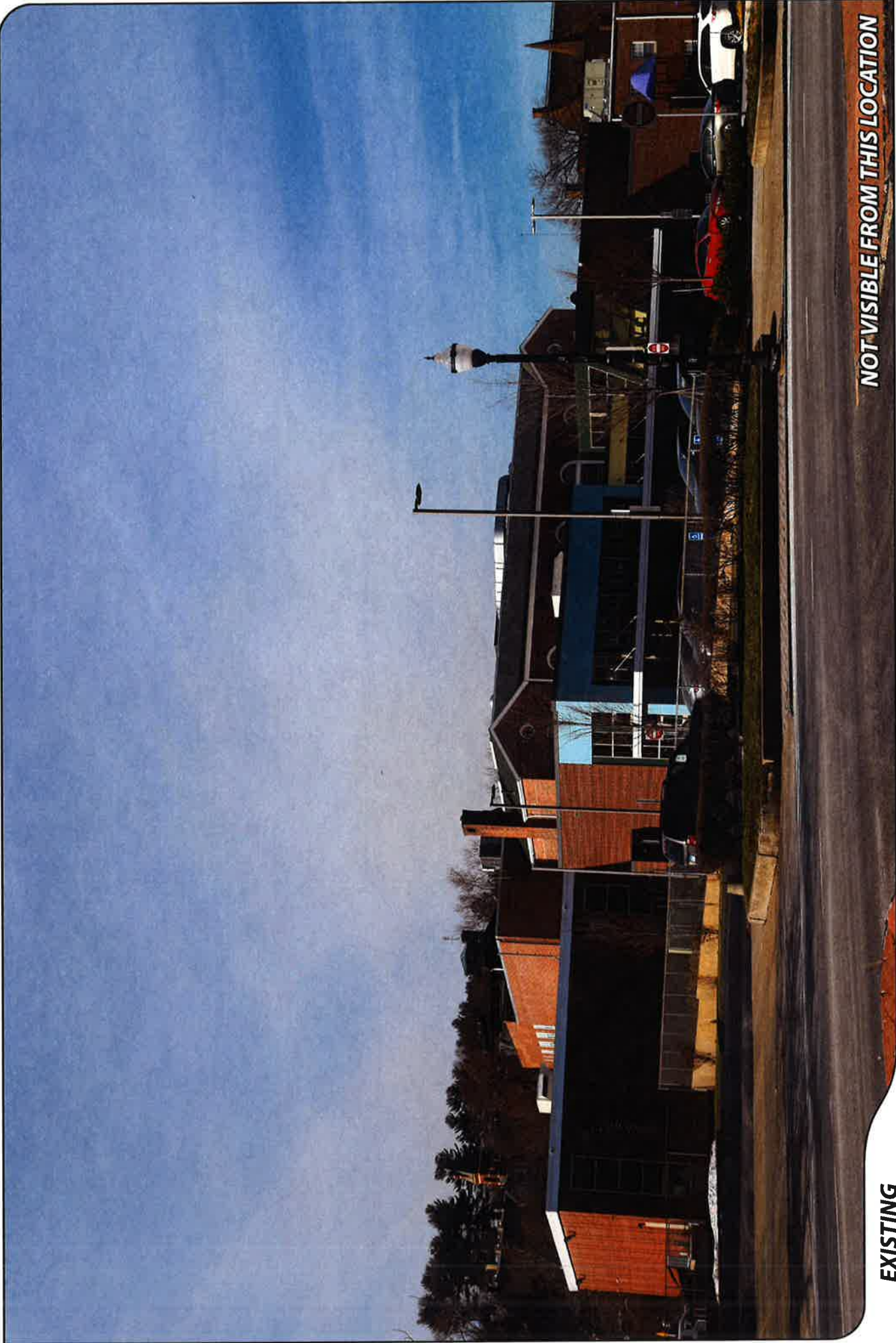
ORIENTATION

WEST

DISTANCE TO SITE

+/- 459 FEET





NOT VISIBLE FROM THIS LOCATION

EXISTING

PHOTO

3

LOCATION

FRANKLIN SQUARE

ORIENTATION

NORTHWEST

DISTANCE TO SITE

+/- 426 FEET



ALL-POINTS
TECHNOLOGY CORPORATION

verizon



EXISTING

PHOTO

4

LOCATION

GLEN STREET

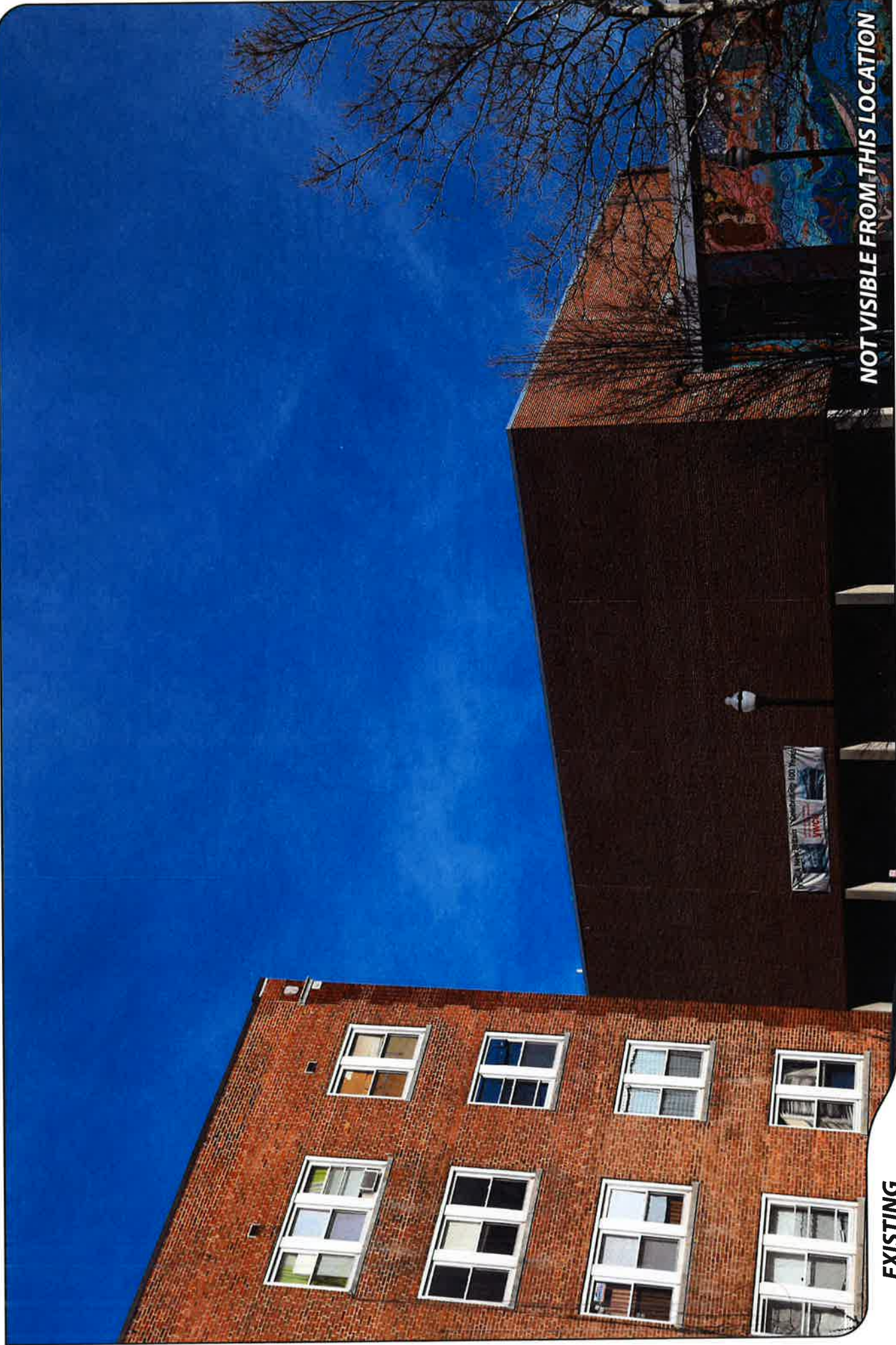
ORIENTATION

NORTH

DISTANCE TO SITE

+/- 286 FEET





NOT VISIBLE FROM THIS LOCATION

EXISTING

PHOTO

5

LOCATION

GLEN STREET

ORIENTATION

NORTHEAST

DISTANCE TO SITE

+/- 231 FEET





EXISTING

PHOTO

6

LOCATION

GLEN STREET

ORIENTATION

SOUTH

DISTANCE TO SITE

+/- 220 FEET



ALL-POINTS
TECHNOLOGY CORPORATION

verizon



PROPOSED

PHOTO

6

LOCATION

GLEN STREET

ORIENTATION

SOUTH

DISTANCE TO SITE

+/- 220 FEET



ALL-POINTS
TECHNOLOGY CORPORATION

verizon

ATTACHMENT 5

General Power Density

Site Name: New Britain SC 7, CT
 Cumulative Power Density

Operator	Operating Frequency (MHz)	Number of Trans.	ERP Per Trans. (watts)	Total ERP (watts)	Distance to Target (feet)	Calculated Power Density (mW/cm ²)	Maximum Permissible Exposure* (mW/cm ²)	Fraction of MPE (%)
VZW PCS	1970	1	510	510	51.1	0.0702	1.0	7.02%
VZW Cellular	869							
VZW AWS	2145							
VZW 700	746							
Total Percentage of Maximum Permissible Exposure								7.02%

*Guidelines adopted by the FCC on August 1, 1996, 47 CFR Part 1 based on NCRP Report 86, 1986 and generally on ANSI/IEEE C95.1-1992

MHz = Megahertz
 mW/cm² = milliwatts per square centimeter
 ERP = Effective Radiated Power

Absolute worst case maximum values used.

ATTACHMENT 6

NEW_BRITAIN_SC_7_CT_Airspace.txt

* Federal Airways & Airspace *
* Summary Report: Alteration Of Existing Structure *
* Non-Antenna Structure *

Airspace User: Mark Brauer

File: NEW_BRITAIN_SC_7_CT

Location: New Britain, CT

Latitude: 41°-39'-50.18" Longitude: 72°-46'-51.46"

SITE ELEVATION AMSL.....170 ft.
STRUCTURE HEIGHT.....53 ft.
OVERALL HEIGHT AMSL.....223 ft.

NOTICE CRITERIA

FAR 77.9(a): NNR (DNE 200 ft AGL)
FAR 77.9(b): NNR (DNE Notice Slope)
FAR 77.9(c): NNR (Not a Traverse Way)
FAR 77.9: NNR FAR 77.9 IFR Straight-In Notice Criteria for 4B8
FAR 77.9: NNR FAR 77.9 IFR Straight-In Notice Criteria for HFD
FAR 77.9(d): NNR (Off Airport Construction)

NR = Notice Required
NNR = Notice Not Required
PNR = Possible Notice Required (depends upon actual IFR procedure)
For new construction review Air Navigation Facilities at bottom
of this report.

If the proposed construction is an alteration to an existing structure, notice requirements may be superceded by the item exemptions listed below.

The location and analysis were based upon an existing structure. However, no existing aeronautical study number was identified. If the 'existing' structure penetrates an obstruction surface defined by CFR 77.17, 77.19, 77.21 or 77.23 (see below) it is strongly recommended the FAA be notified of the 'existing' structure to determine obstruction marking or lighting requirements. It is not uncommon for the FAA to issue a Determination of No Hazard (DNH) for an existing structure and modify the airspace to accommodate the structure, should that be required. If the FAA issues a DNH enter the aeronautical study number (ASN) in the space provided on the Airspace Analysis Window Form and re-run Airspace.

No frequencies were identified in this alteration are included in the FAA's Co-Location Policy published in the Federal Register November 15, 2007. Therefore, application of the Co-Location Policy notice exemption rule can not be applied.

Title 14 CFR Part 77.9(e), Notice Criteria Exception:
The location and analysis were based upon an existing structure with the alteration limited to the addition of an antenna with a height no greater than 20 feet. Title 14 CFR Part 77.9(e)(4) exempts the requirement for notice to the FAA; "Any antenna structure of 20 feet or less in height except one that would increase the height of another antenna structure." If the addition of an antenna of 20 feet or less to an existing structure increase the height of the structure to exceed 200 feet AGL or penetrate an obstruction surface defined by Title 14 CFR 77.17, 77.19, 77.21 or 77.23 notice is recommended.

This
and

will allow the FAA to determine the level of obstruction lighting required

NEW_BRITAIN_SC_7_CT_Airspace.txt

AIR NAVIGATION ELECTRONIC FACILITIES										
APCH	FAC	ST	DIST		DELTA		GRND			
BEAR	IDNT	TYPE	AT	FREQ	VECTOR	(ft)	ELEVA	ST	LOCATION	ANGLE
----	-----	-----	-----	-----	-----	-----	-----	-----	-----	-----
	4B8	CO	Y	A/G	293.08	25388	-37	CT	PALINFIELD	-.08
	HFD	VOR/DME	R	114.9	97.51	64368	-626	CT	HARTFORD	-.56
	BDL	RADAR	ON		14.99	103609	-13	CT	BRADLEY INTL	-.01
<p>No Impact. Alteration does not require Notice based upon EMI. The studied location is within 20 NM of a Radar facility. The calculated Radar Line-Of-Sight (LOS) distance is: 37 NM. This location and height is within the Radar Line-Of-Sight.</p>										
	MAD	VOR/DME	R	110.4	169.23	129868	+3	CT	MADISON	0.00
	HVN	VOR/DME	R	109.8	191.01	149105	+217	CT	NEW HAVEN	.08
	BAF	VORTAC	R	113.0	5.53	182328	-44	MA	BARNES	-.01
	BDR	VOR/DME	R	108.8	207.08	206170	+214	CT	BRIDGEPORT	.06
	CEF	VORTAC	R	114.0	19.53	206420	-18	MA	WESTOVER	0.00

CFR Title 47, §1.30000-§1.30004

AM STUDY NOT REQUIRED: Structure is not near a FCC licensed AM station.
 Movement Method Proof as specified in §73.151(c) is not required.
 Please review 'AM Station Report' for details.

Nearest AM Station: WPOP @ 3766 meters.

Airspace® Summary Version 16.11.425

AIRSPACE® and TERPS® are registered ® trademarks of Federal Airways & Airspace®
 Copyright © 1989 - 2016

01-06-2017
 09:33:44

ATTACHMENT 7

February 6, 2017

Via Certificate of Mailing

Erin Stewart, Mayor
City of New Britain
27 West Main Street
New Britain, CT 06051

**Re: Proposed Installation of a Wireless Telecommunications Facility at
the YWCA, 19 Franklin Square, New Britain, Connecticut**

Dear Mayor Stewart:

This firm represents Cellco Partnership d/b/a Verizon Wireless (“Cellco”). Today, Cellco filed a Petition for Declaratory Ruling (“Petition”) with the Connecticut Siting Council (“Council”) seeking approval to install a new small cell telecommunications facility attached to the New Britain YWCA building at 19 Franklin Square in New Britain (the “Property”). The facility will consist of a single canister antenna at the top of a small tower extending approximately seven (7) feet above an existing roof-top chimney. A remote radio head and associated electrical equipment will be mounted to the façade of the building below the antenna.

A full copy of the Petition is attached for your review. In accordance with Council requirements, abutting landowners were also sent notice of this filing and a copy of the Petition.

15988910-v1

Robinson + Cole

Erin Stewart, Mayor
February 6, 2017
Page 2

Please contact me if you have any questions regarding this proposal.

Sincerely,



Kenneth C. Baldwin

Attachment

February 6, 2017

Via Certificate of Mailing

Young Womens Christian Association
19 Franklin Square
New Britain, CT 06051

**Re: Proposed Installation of a Wireless Telecommunications Facility at
the YWCA, 19 Franklin Square, New Britain, Connecticut**

Dear Sir or Madam:

This firm represents Cellco Partnership d/b/a Verizon Wireless (“Cellco”). Today, Cellco filed a Petition for Declaratory Ruling (“Petition”) with the Connecticut Siting Council (“Council”) seeking approval to install a new small cell telecommunications facility attached to the New Britain YWCA building at 19 Franklin Square in New Britain (the “Property”). The facility will consist of a single canister antenna at the top of a small tower extending approximately seven (7) feet above an existing roof-top chimney. A remote radio head and associated electrical equipment will be mounted to the façade of the building below the antenna.

A full copy of the Petition is attached for your review. In accordance with Council requirements, abutting landowners were also sent notice of this filing and a copy of the Petition.

15988925-v1

Robinson + Cole

Young Womens Christian Association
February 6, 2017
Page 2

Please contact me if you have any questions regarding this proposal.

Sincerely,



Kenneth C. Baldwin

Attachment

ATTACHMENT 8

KENNETH C. BALDWIN

280 Trumbull Street
Hartford, CT 06103-3597
Main (860) 275-8200
Fax (860) 275-8299
kbaldwin@rc.com
Direct (860) 275-8345

Also admitted in Massachusetts

February 6, 2017

Via Certificate of Mailing

«Name_and_Address»

Re: Notice of Intent to File a Petition for Declaratory Ruling with the Connecticut Siting Council for the Installation of a Wireless Telecommunications Facility at the YWCA, 19 Franklin Square, New Britain, Connecticut

Dear «Salutation»:

This firm represents Cellco Partnership d/b/a Verizon Wireless (“Cellco”). Today, Cellco filed a Petition for Declaratory Ruling (“Petition”) with the Connecticut Siting Council (“Council”) seeking approval to install a new small cell telecommunications facility attached to the New Britain YWCA building at 19 Franklin Square in New Britain (the “Property”). The facility will consist of a single canister antenna at the top of a small tower extending approximately seven (7) feet above an existing roof-top chimney. A remote radio head and associated electrical equipment will be mounted to the façade of the building below the antenna. A copy of Cellco’s Petition is attached for your review.

This notice is being sent to you because you are listed on the Town Assessor’s records as an owner of land that abuts the Property. If you have any questions regarding the Petition, the Council’s process for reviewing the Petition or the details of the filing itself, please feel free to contact me at the number listed above. You may also contact the Council directly at 860-827-2935.

February 6, 2017
Page 2

Sincerely,

A handwritten signature in black ink, appearing to read "Kenneth C. Baldwin". The signature is written in a cursive style with a long horizontal flourish at the end.

Kenneth C. Baldwin

Attachment

CELLCO PARTNERSHIP D/B/A VERIZON WIRELESS

ABUTTING PROPERTY OWNERS

**19 FRANKLIN SQUARE
NEW BRITAIN, CONNECTICUT**

	<u>Property Address</u>	<u>Owner's and Mailing Address</u>
1.	140 Arch Street	City of New Britain – Arch St Parkade 27 West Main Street New Britain, CT 06051
2.	61 Glen Street	Dalena Auto Parts Inc. 63 Glen Street New Britain, CT 06051
3.	45 Franklin Square	AW Carlson Co. Inc. 45 Franklin Square New Britain, CT 06051
4.	7 Franklin Square	Advocates Realty LLC 11 Franklin Square New Britain, CT 06051
5.	35 Glen Street	Glen Street Associates LLC P.O. Box 340127 Hartford, CT 06134
6.	77 Franklin Square	The First Lutheran Church of Reformation Inc. 77 Franklin Square New Britain, CT 06051
7.	10 Franklin Square	State of Connecticut Public Utilities Regulatory Authority Ten Franklin Square New Britain, CT 06051
8.	38 Main Street	One Thousand One Hundred Fifty Four Fifty Six Street LLC 64 Greenpoint Avenue Brooklyn, NY 11222
9.	32 West Pearl Street	Robert Elliott 1660 Capital Avenue Bridgeport, CT 06604

	<u>Property Address</u>	<u>Owner's and Mailing Address</u>
10.	27 Glen Street	Twenty Seven-Thirty One Glen Street LLC c/o Neptune Associates 2681 East 14 th Street Brooklyn, NY 11235
11.	23 Glen Street	Kenneth L. McCoy 1458 East Main Street, Unit 5 Bridgeport, CT 06608
12.	90 Main Street	South Congregational Church 90 Main Street New Britain, CT 06051