

PSEG POWER CONNECTICUT LLC
PETITION FOR DECLARATORY FILING

EXHIBIT C
Electrical One-Line Drawing

LEGENDS/SYMBOL KEYS:

▲ BY GENERATOR OEM

DESIGN NOTES:

1. SINGLE LINE SHALL BE USED FOR SITE DEVELOPMENT ONLY. DATA SHALL NOT BE USED FOR INTERCONNECT AGREEMENT OR FOR DESIGN PURPOSES.
2. 345 KV FACILITY SHALL BE DESIGNED TO ACCEPT FUTURE ADDITION OF TWO BREAKER POSITIONS. GIS EQUIPMENT SHALL BE DESIGNED TO ACCEPT THE ADDITIONAL CIRCUIT BREAKERS WITHOUT MODIFICATION TO THE EXISTING IN-SERVICE EQUIPMENT.
3. 4.16KV DISTRIBUTION SWITCHGEAR FACILITY SHALL BE DESIGNED TO ACCEPT FUTURE ADDITION OF FIVE CIRCUIT BREAKER POSITIONS. SWITCHGEAR EQUIPMENT SHALL BE DESIGNED TO ACCEPT THE ADDITIONAL CIRCUIT BREAKERS WITHOUT MODIFICATION TO THE EXISTING IN-SERVICE EQUIPMENT.
4. IPB FLEX CONNECTIONS SHALL SERVE AS DISCONNECT LINKS.

REFERENCES:

NO.	DATE	ACCT.	DESCRIPTION	DWN	CKD	EXD	REV	REV	APD
OE	02/01/16		SEE REVISION NOTE OE	AB	DR	TF	-	-	-
OD	04/17/15		SEE REVISION NOTE OD	TW	DR	TF	-	-	-
OC	02/04/15		SEE REVISION NOTE OC	TW	DR	TF	-	-	-
OB	01/12/15		SEE REVISION NOTE OB	TW	DR	TF	-	-	-

REVISION

RCM Technologies
Power System Services

BRIDGEPORT 05
ELECTRICAL
COMBINED CYCLE PROJECT
KEY ONE LINE DIAGRAM

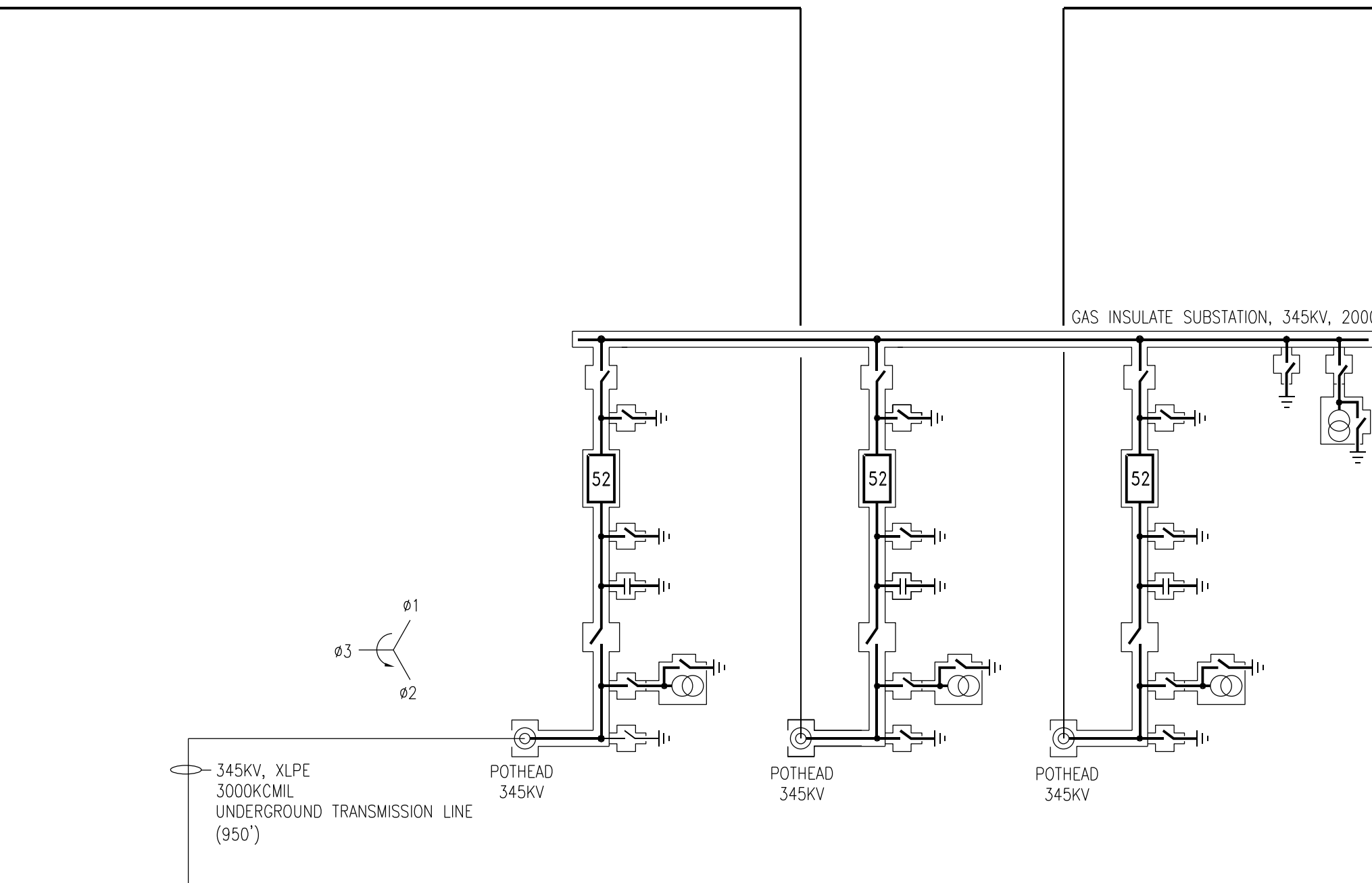
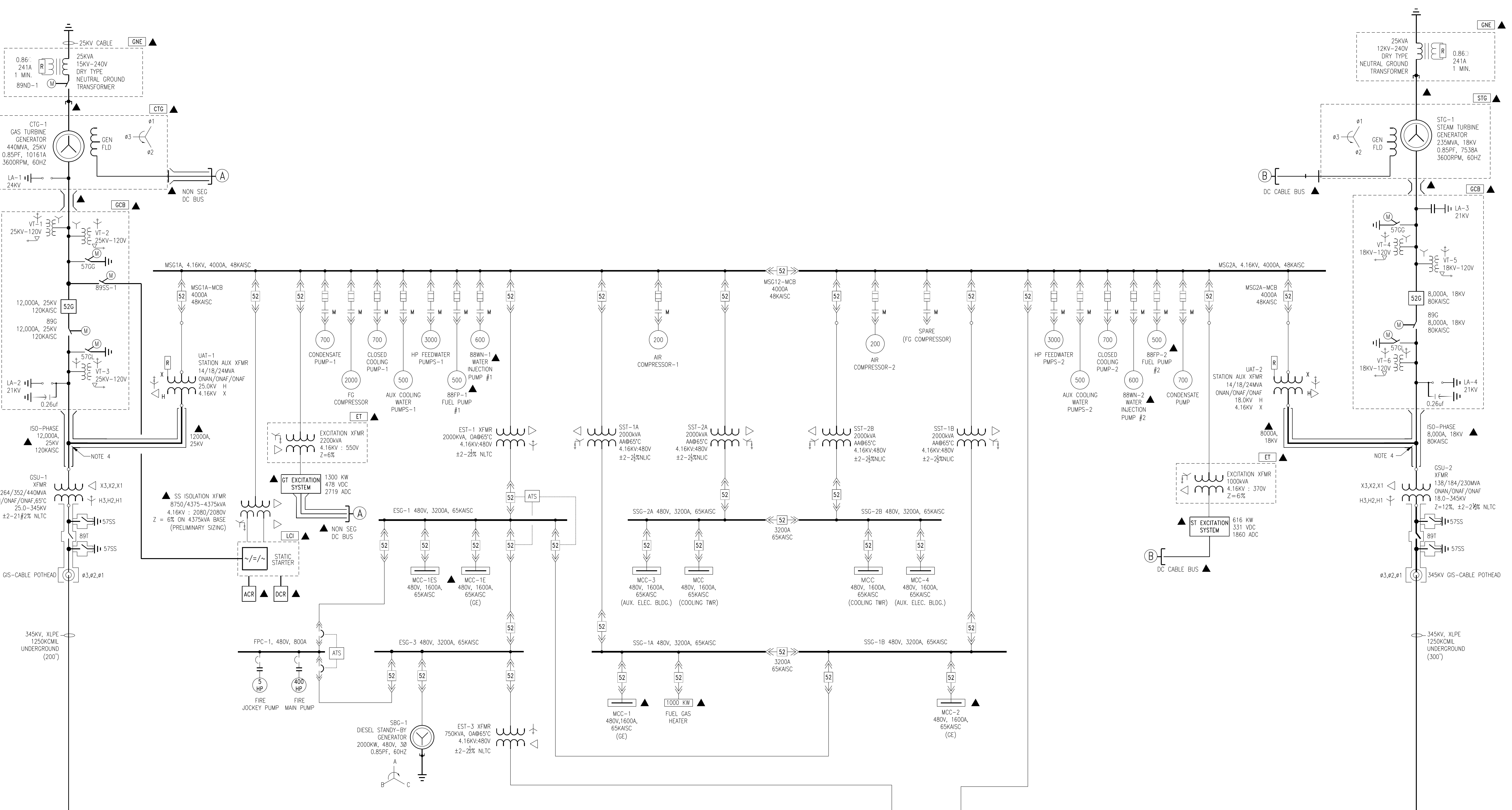
ONE LINE DESIGN-CONTROLS

PROJECT ENGINEERING DIVISION



DRAWN (BY RCMT) ANGELA BARBER	CHECKED (BY RCMT) DEEPESH RANA	EXAMINED (SR DESIGNER) (BY RCMT) TONY FOSTER
REVIEWED (ENGR)	REVIEWED (PROJ ENGR)	APPROVED (PRINCIPAL)

VENDOR NO.
BPHU5-DWG-014-E-0001



TECHNICAL TABLES/SPECIFICATIONS:

OB, REVISED PER LATEST MANUFACTURER PROVIDED DATA.
OC, REVISED PER GE COMMENTS.
OD, REVISED PER LATEST MANUFACTURER PROVIDED DATA.
OE, REVISED PER LATEST GE PROPOSAL 907338 REV.3.

REVISION NOTES:

DWG SCALE:

SEAL: