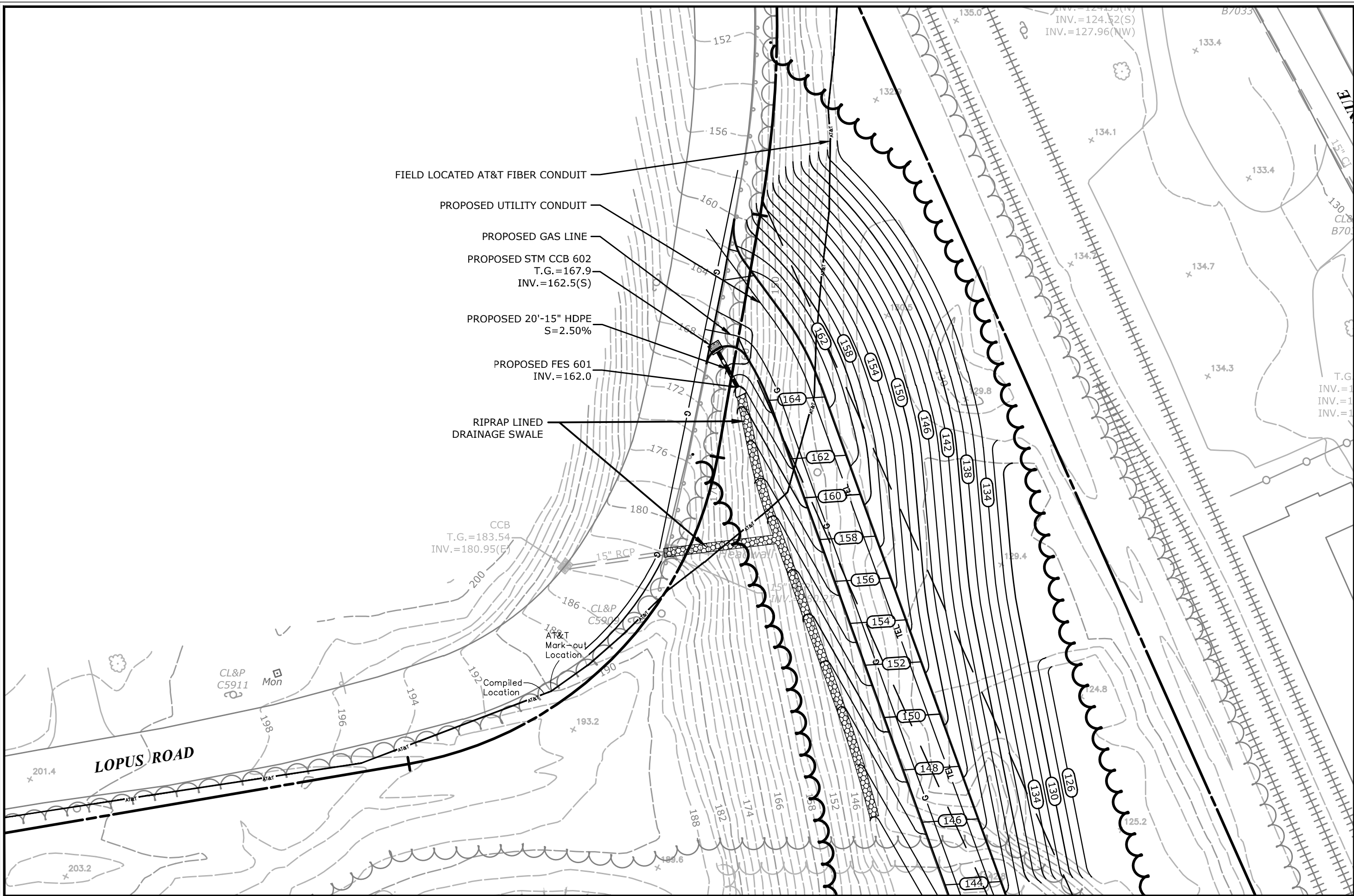
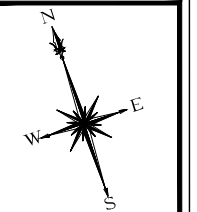


Drawing: W:\DESIGN\1103-87-DE\CAD\LR-GRADING\UTILITIES.DWG Layout: Table 1  
 Plotted by: DAVIDL On this date: Tue, 14 Jul 2015 14:53:00pm



- FIELD LOCATED AT&T FIBER CONDUIT
- PROPOSED UTILITY CONDUIT
- PROPOSED GAS LINE
- PROPOSED STM CCB 602  
T.G.=167.9  
INV.=162.5(S)
- PROPOSED 20'-15" HDPE  
S=2.50%
- PROPOSED FES 601  
INV.=162.0
- RIPRAP LINED  
DRAINAGE SWALE



**MILONE & MACBROOM®**  
 99 Realty Drive  
 Cheshire, Connecticut 06410  
 (203) 271-1773 Fax (203) 272-9733  
 www.miloneandmacbroom.com

REVISIONS

PROPOSED DRIVEWAY PLAN  
 BEACON FALLS ENERGY PARK  
 LOPUS ROAD  
 BEACON FALLS, CONNECTICUT

DJK DESIGNED	DJL DRAWN	SRD CHECKED
SCALE 1"=40'		
DATE JULY 14, 2015		
PROJECT NO. 1103-87		
<b>EX 1</b>		

Copyright Milone & MacBroom, Inc. - 2015