

EXHIBIT E

REVISED SITE PLAN

Site Development Plan

Proposed Solar Photovoltaic System Installation

Prepared for

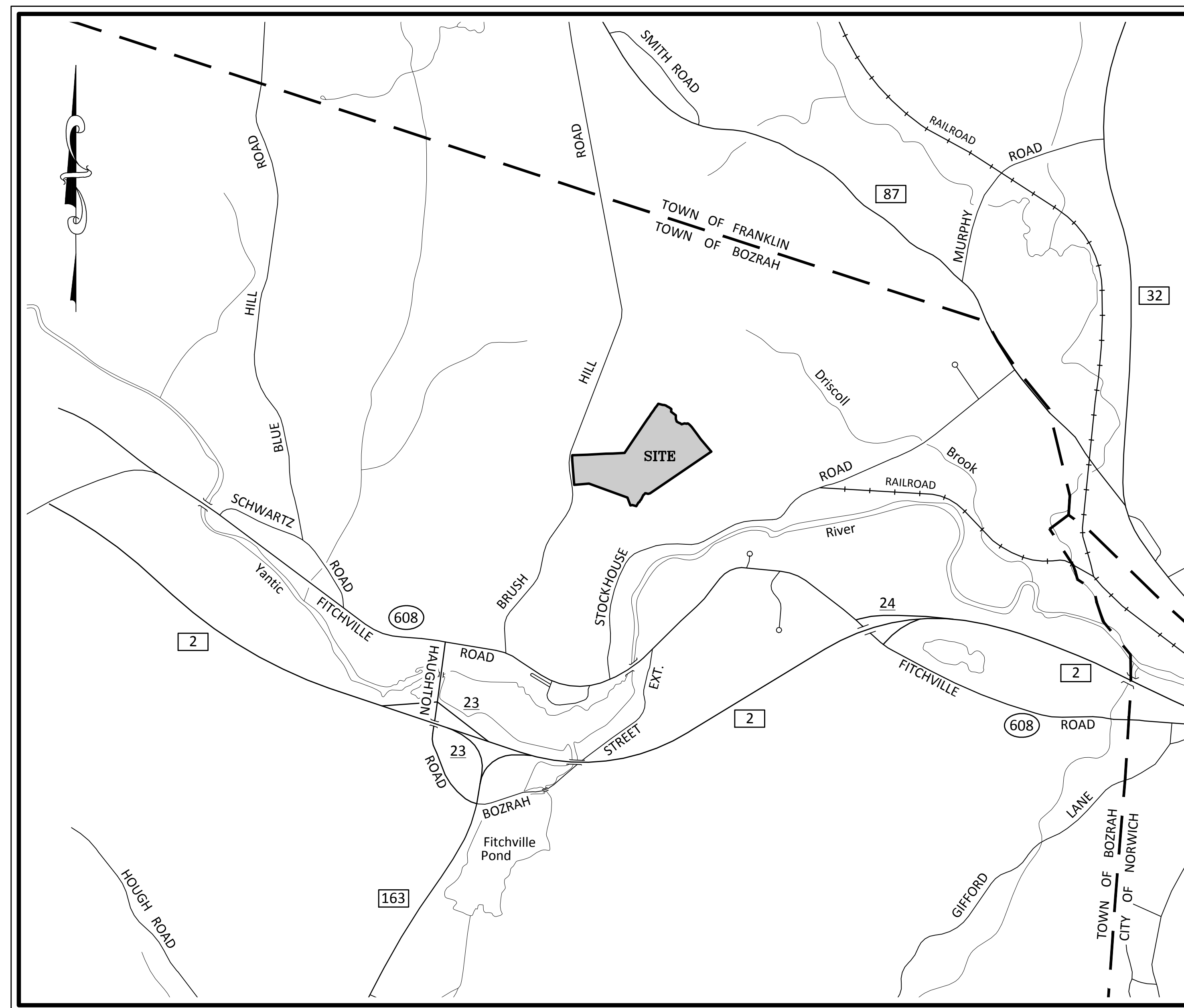
Brightfields Development LLC

Brush Hill Road, Bozrah, Connecticut

Assessor's I.D. 04/006A1

October 2014

(Revised May 2015)



LOCATION MAP

SCALE: 1"=1,000'

Index to Drawings

Sheet	Title
2	Existing Conditions Plan
3	Grading, Drainage & Erosion Control - West
4	Grading, Drainage & Erosion Control - East
5	Construction Notes & Details
6	Stormwater Management Details
7	Stormwater Management Details

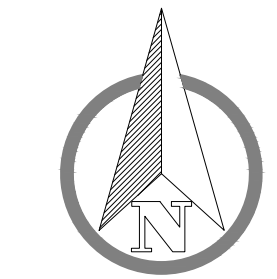
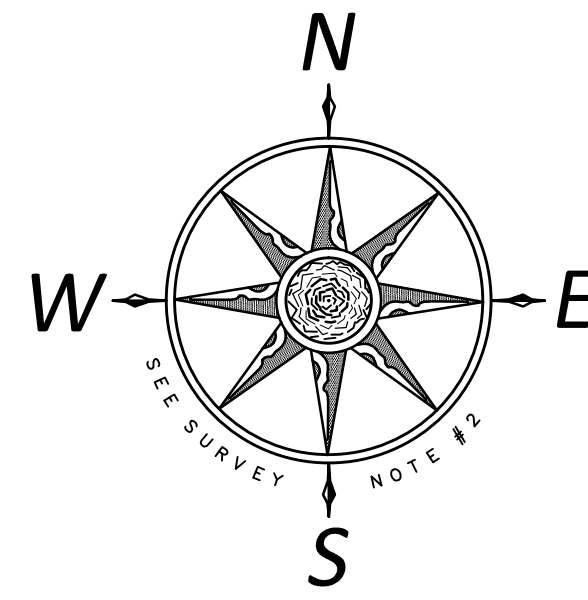
P:\CIVIL 3D PROJECTS\2014\14-2279 - BRIGHTFIELDS DEVELOPMENT LLC\DWG\DESIGN\14-2279 - BRIGHTFIELDS DEVELOPMENT LLC...SITE.PLAN.DWG

SURVEY NOTES

- THIS SURVEY HAS BEEN PREPARED PURSUANT TO THE REGULATIONS OF CONNECTICUT STATE AGENCIES SECTIONS 20-3009-1 THROUGH 20-3009-20 AND THE "STANDARDS FOR SURVEYS AND MAPS IN THE STATE OF CONNECTICUT" AS ADOPTED FOR USE BY THE CONNECTICUT ASSOCIATION OF LAND SURVEYORS, INC. ON SEPTEMBER 26, 1996. IT IS AN "IMPROVEMENT LOCATION & TOPOGRAPHIC SURVEY"; THE BOUNDARY DETERMINATION CATEGORY IS "RESURVEY"; THE HORIZONTAL ACCURACY CONFORMS TO CLASS "A-2"; THE TOPOGRAPHIC ACCURACY CONFORMS TO CLASS "T-2" WITHIN THE AREA OF DEVELOPMENT AND "T-0" FOR THE REMAINDER OF THE AREA SHOWN.
- NORTH ORIENTATION DEPICTED HEREON IS BASED ON CONNECTICUT GRID (NORTH AMERICAN DATUM OF 1983). ELEVATIONS ARE BASED ON THE NORTH AMERICAN VERTICAL DATUM OF 1988 (NAVD 88).
- ALL SUBTERRANEAN FEATURES AND IMPROVEMENTS MAY NOT BE DEPICTED OR NOTED HEREON.
- THE FIELD SURVEY WAS COMPLETED ON APRIL 12, 2011 AND WAS UPDATED FOR TOPOGRAPHY ON AUGUST 27, 2014. LAND RECORD AND RELATED RESEARCH WAS COMPLETED ON JANUARY 29, 2011 AND UPDATED ON AUGUST 26, 2014.
- RECORD TITLE TO THE SUBJECT PROPERTY IS REFERENCED TO THE FOLLOWING DEEDS:
 A QUIT CLAIM DEED FROM LAWRENCE M. GILMAN TO FAITH CROSS OF HARVARD, MASSACHUSETTS AND MICHAEL A. GOLDBLATT, OF NORWICH, CONNECTICUT, TRUSTEES OF THE LAWRENCE M. GILMAN 1989 TRUST, EXECUTED BY LAWRENCE M. GILMAN AS SETTLOR ON SEPTEMBER 7, 1989, RECORDED JULY 13, 1989, IN TOWN OF BOZRAH LAND RECORDS VOLUME 45, PAGE 724.
 A QUIT CLAIM DEED FROM CHARLES M. GILMAN TO FAITH CROSS AND MICHAEL A. GOLDBLATT, TRUSTEES OF THE LAWRENCE M. GILMAN 1988 TRUST, EXECUTED ON SEPTEMBER 8, 1988 BY LAWRENCE M. GILMAN (HEREINAFTER "RELEASEE"), RECORDED JULY 6, 1989, IN TOWN OF BOZRAH LAND RECORDS VOLUME 45, PAGE 692.
 * FAITH CROSS AND MICHAEL A. GOLDBLATT HAVE RESIGNED AS TRUSTEES OF THE LAWRENCE M. GILMAN 1988 TRUST, NAMING RICHARD L. GILMAN AS SOLE TRUSTEE. SEE LETTERS RECORDED IN TOWN OF BOZRAH LAND RECORDS VOLUME 85, PAGE 766 AND VOLUME 85, PAGE 790.
- DELINEATED INLAND WETLANDS AND WATERCOURSES AS DEPICTED HEREON WERE DERIVED FROM A FIELD DELINEATION PERFORMED BY DEMIAN A. SORRENTINO, C.S.S. ON MAY 8, 2007 AND MAY 9, 2007.

REFERENCE MAPS

- "SUBDIVISION PLAN, PROPERTY SURVEY, PREPARED FOR RICHARD L. GILMAN, STOCKHOUSE ROAD & BRUSH HILL ROAD, BOZRAH, CONNECTICUT, SCALE: 1" = 100', JUNE 2008, JOB I.D. NO. 06-1428, SHEET 2 OF 3, LAST REVISED 7-24-08", PREPARED BY BOUNDARIES, LLC.
- "SUBDIVISION PLAN, PREPARED FOR RICHARD L. GILMAN, FITCHVILLE ROAD & BRUSH HILL ROAD, BOZRAH, CONNECTICUT, SCALE: VARIES, OCTOBER 2011, JOB I.D. NO. 09-1801, SHEETS 1 OF 2 THROUGH 2 OF 2, LAST REVISED 12-5-11, PREPARED BY BOUNDARIES, LLC.
- "DRIVEWAY CROSSING, IMPROVEMENT LOCATION & TOPOGRAPHIC SURVEY, PREPARED FOR RICHARD L. GILMAN, STOCKHOUSE ROAD, BOZRAH, CONNECTICUT, SCALE: 1" = 20', NOVEMBER 2009, JOB I.D. NO. 06-1428", PREPARED BY BOUNDARIES, LLC.
- "SITE PLAN, AGGREGATE EXTRACTION AND PROCESSING PLAN, PREPARED FOR RAWSON MATERIALS, PROPERTY OF RICHARD L. GILMAN, TRUSTEE OF THE LAWRENCE M. GILMAN 1989 TRUST, STOCKHOUSE ROAD & BRUSH HILL ROAD, BOZRAH, CONNECTICUT, FEBRUARY 2011" LAST REVISED 4-13-11" PREPARED BY BOUNDARIES, LLC.
- "SITE DEVELOPMENT PLAN, PROPOSED INDUSTRIAL BUILDING, PREPARED FOR COIT EXCAVATING, INC., PROPERTY OF STEVEN J. COIT, STOCKHOUSE ROAD, BOZRAH, CONNECTICUT, MAY 2013, SHEETS 1 OF 7 THROUGH 7 OF 7" LAST REVISED 9-4-13, AS PREPARED BY BOUNDARIES, LLC.



SCALE: 1" = 60'

DATE: October 2014

JOB I.D. NO. 14-2279

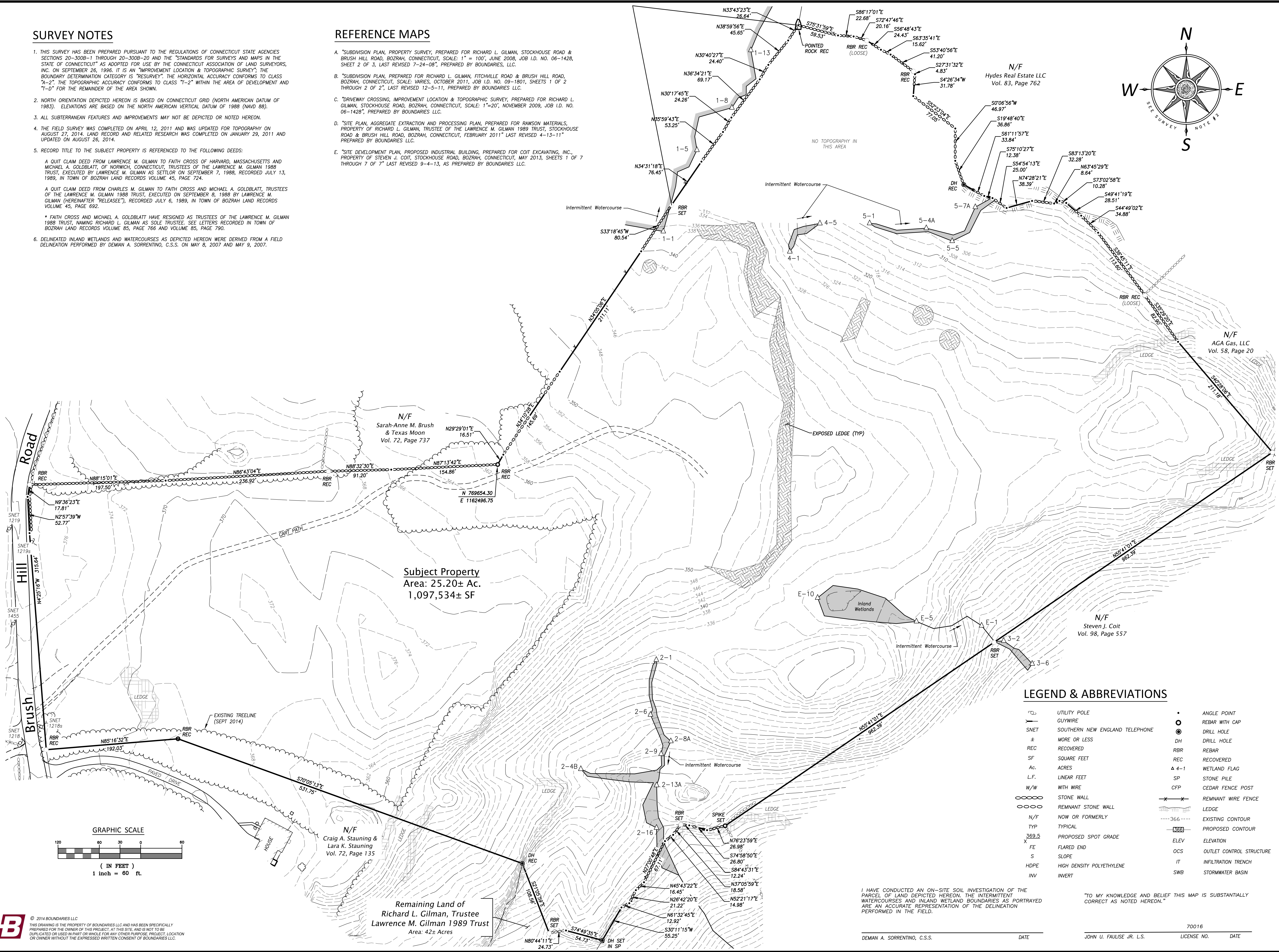
Revisions

Rev. A - New panel layout (GameChange) - 12/19/14

Rev. B - Per Siting Council Verbal Comments - 5/13/15

Rev. C - Per BL&P/Town Comments - 5/20/15

P:\CIVIL 3D PROJECTS\2014\14-2279 - BRIGHTFIELDS DEVELOPMENT LLC\DWG\DESIGN\14-2279 BRIGHTFIELDS DEVELOPMENT LLC...SITE PLAN.DWG



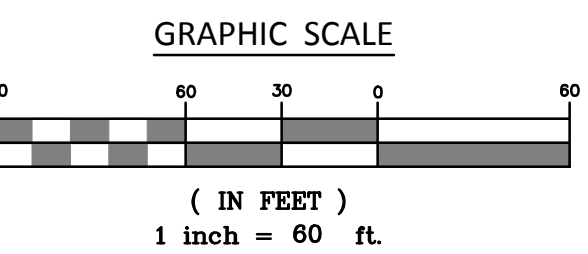
LEGEND & ABBREVIATIONS

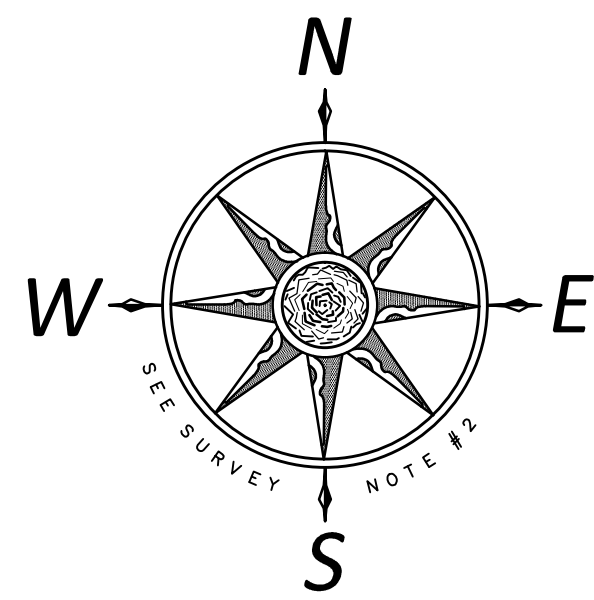
○	UTILITY POLE	•	ANGLE POINT
—	GUYWIRE	○	REBAR WITH CAP
SNET	SOUTHERN NEW ENGLAND TELEPHONE	⊙	DRILL HOLE
±	MORE OR LESS	DH	DRILL HOLE
REC	RECOVERED	RBR	REBAR
SF	SQUARE FEET	REC	RECOVERED
Ac.	ACRES	△ 4-1	WETLAND FLAG
L.F.	LINEAR FEET	SP	STONE PILE
W/W	WITH WIRE	CFP	CEDAR FENCE POST
○	STONE WALL	—x—	REMNANT WIRE FENCE
○	REMNANT STONE WALL	— —	LEDGE
N/F	NOW OR FORMERLY	---	EXISTING CONTOUR
TYP	TYPICAL	---	PROPOSED CONTOUR
369.5	PROPOSED SPOT GRADE	ELEV	ELEVATION
X	FLARED END	OCs	OUTLET CONTROL STRUCTURE
S	SLOPE	IT	INFILTRATION TRENCH
HDPE	HIGH DENSITY POLYETHYLENE	SWB	STORMWATER BASIN
INV	INVERT		

I HAVE CONDUCTED AN ON-SITE SOIL INVESTIGATION OF THE PARCEL OF LAND DEPICTED HEREON. THE INTERMITTENT WATERCOURSES AND INLAND WETLAND BOUNDARIES AS PORTRAYED ARE AN ACCURATE REPRESENTATION OF THE DELINEATION PERFORMED IN THE FIELD.

"TO MY KNOWLEDGE AND BELIEF THIS MAP IS SUBSTANTIALLY CORRECT AS NOTED HEREON."

DEMIAN A. SORRENTINO, C.S.S. DATE JOHN U. FAULISE JR. L.S. LICENSE NO. DATE





LEGEND & ABBREVIATIONS

○	UTILITY POLE	•	ANGLE POINT
—	GUYWIRE	○	REBAR WITH CAP
SNET	SOUTHERN NEW ENGLAND TELEPHONE	⊙	DRILL HOLE
±	MORE OR LESS	DH	DRILL HOLE
REC	RECOVERED	RBR	REBAR
SF	SQUARE FEET	REC	RECOVERED
Ac.	ACRES	Δ 4-1	WETLAND FLAG
L.F.	LINEAR FEET	SP	STONE PILE
W/W	WITH WIRE	CFP	CEDAR FENCE POST
—	STONE WALL	— X —	REMNANT WIRE FENCE
—	REMNANT STONE WALL	— —	PROPOSED OVERHEAD ELECTRIC
N/F	NOW OR FORMERLY	— E —	PROPOSED UNDERGROUND ELECTRIC
TYP	TYPICAL	—	LEDGE
369.5	PROPOSED SPOT GRADE	---	EXISTING CONTOUR
FE	FLARED END	---	PROPOSED CONTOUR
S	SLOPE	—	ELEVATION
HDPE	HIGH DENSITY POLYETHYLENE	OCS	OUTLET CONTROL STRUCTURE
INV	INVERT	IT	INFILTRATION TRENCH
		SWB	STORMWATER BASIN

DRAINAGE TABLE

CULVERT #1	CULVERT #2	CULVERT #3
FE Ø INLET	FE Ø INLET	FE Ø INLET
INV 367.50	INV 367.50	INV 346.03
30"-12" HDPE	30"-12" HDPE	32"-15" HDPE
S = 0.01	S = 0.01	S = 0.03
FE Ø OUTLET	FE Ø OUTLET	FE Ø OUTLET
INV 367.20	INV 367.20	INV 345.07

NOTE: FOR RIP RAP SIZING AND APRON DIMENSIONS, SEE RIP RAP APRON DETAIL.

STORMWATER BASIN #1

BOTTOM WIDTH = 15'
 BOTTOM LENGTH = 145'
 BOTTOM OF BASIN - ELEV 366.00
 3:1 GRASS SIDE SLOPES
 EMERGENCY SPILLWAY ELEV 368.60

INFILTRATION TRENCH #1

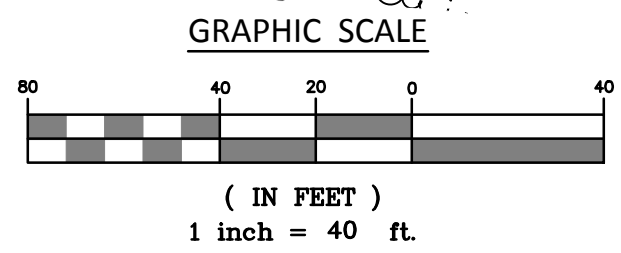
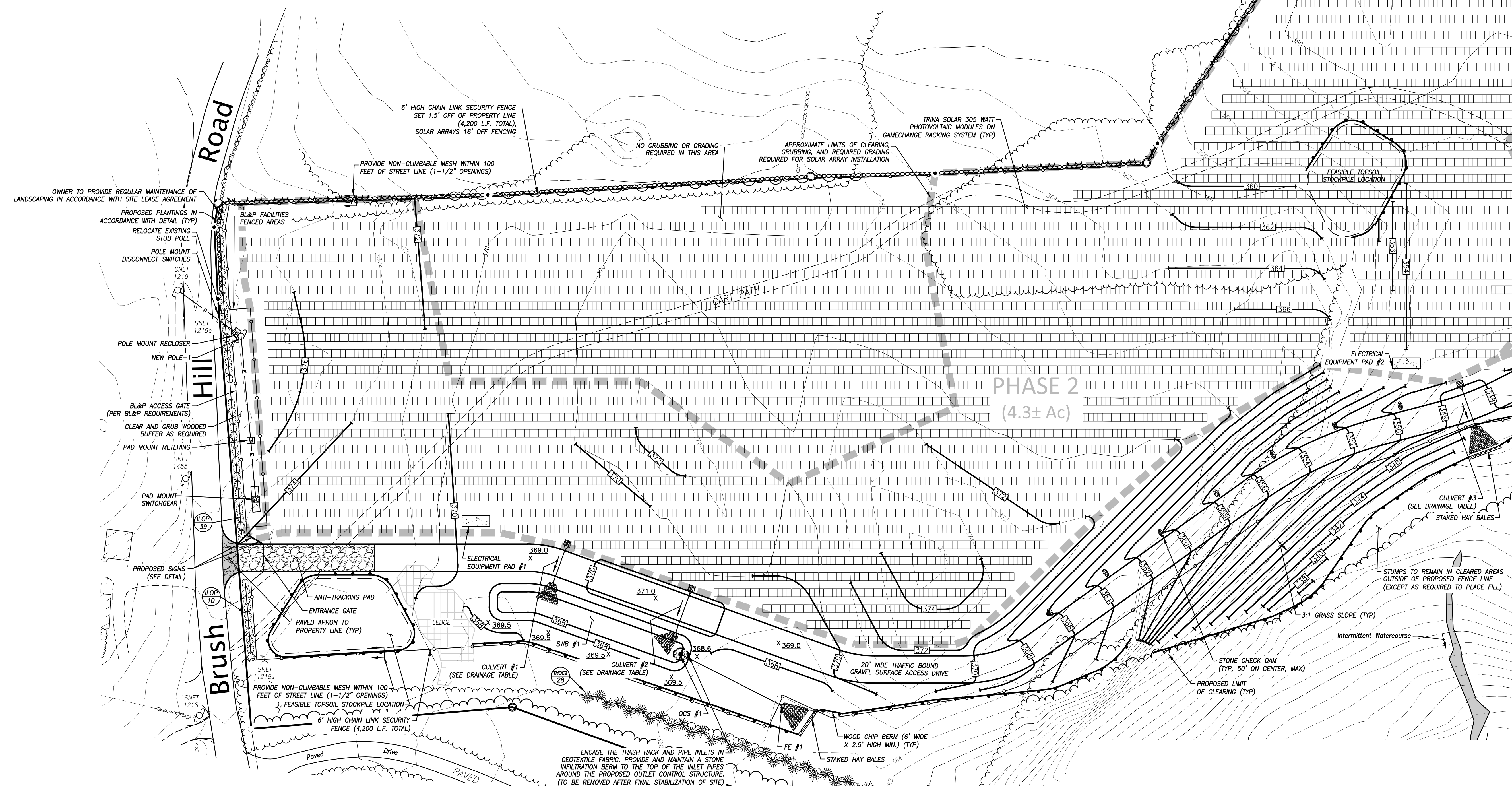
150' LONG, 11" WIDE, 3.7' HIGH
 BOTTOM OF TRENCH - ELEV 340.86

OUTLET CONTROL STRUCTURE #1

(CATCH BASIN WITH ORIFICES IN OUTER WALL)
 TF 368.25
 ELEVATION
 INV 366.20 - 6" Ø ORIFICE IN
 INV 367.00 - 6" Ø ORIFICE IN
 INV 366.00 - 15" OUT

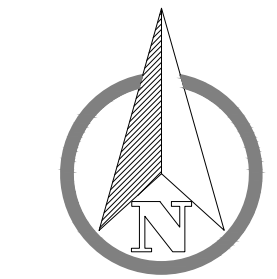
80" - 15" HDPE, S = 0.005

FE #1
 INV 365.60



Match Line - See Sheet 4 of 6

"TO MY KNOWLEDGE AND BELIEF THIS MAP IS SUBSTANTIALLY CORRECT AS NOTED HEREON."



SCALE: 1" = 40'
 DATE: October 2014
 JOB I.D. NO.: 14-2279

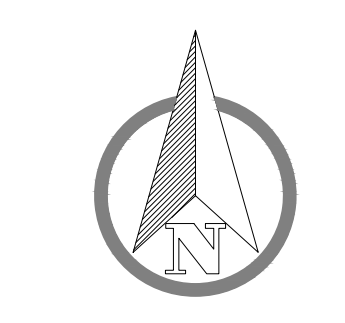
Revisions

Rev. A - New panel layout (GameChange) - 12/19/14
Rev. B - Per Siting Council Verbal Comments - 5/13/15
Rev. C - Per BL&P/Town Comments - 5/20/15

SHEET NO.

3

7



SCALE: 1" = 40'

DATE: October 2014

JOB I.D. NO. 14-2279

Revisions

Rev. A - New panel layout (GameChange) - 12/19/14

Rev. B - Per Siting Council Verbal Comments - 5/13/15

Rev. C - Per BL&P/Town Comments - 5/20/15

SHEET NO.
4
 7

DRAINAGE TABLE

CULVERT #4
 FE Ø INLET
 INV 339.60
 32" - 12" HDPE
 S = 0.03
 FE Ø OUTLET
 INV 336.64
 NOTE: FOR RIP RAP SIZING AND APRON DIMENSIONS, SEE RIP RAP APRON DETAIL.

STORMWATER BASIN #2
 BOTTOM WIDTH = 20'
 BOTTOM LENGTH = 50'
 BOTTOM OF BASIN - ELEV 332.50
 3:1 GRASS SIDE SLOPES
 EMERGENCY SPILLWAY ELEV 335.00

OUTLET CONTROL STRUCTURE #2
 (CATCH BASIN WITH ORIFICES IN OUTER WALL)
 TF 335.00
 INV 333.00 - 6" Ø ORIFICE IN
 INV 334.00 - 6" Ø ORIFICE IN
 INV 332.75 - 12" OUT
 35' - 12" HDPE, S = 0.005

FE #2
 332.57

INFILTRATION TRENCH #2
 130' LONG, 10' WIDE, 3.0' HIGH
 BOTTOM OF TRENCH - ELEV 325.00
 BOTTOM OF ADS STORMTECH SC310 SECTION = ELEV 325.50
 INV 325.50
 14' - 12" HDPE, S = 0.02, WITH WATERSTOP COLLAR (IMPERVIOUS)

OUTLET CONTROL STRUCTURE #3
 (MANHOLE WITH INTERIOR WALL WITH ORIFICES)
 TF 328.00
 INV 325.12 - 12" IN FROM ADS STORMTECH SC310 SECTION
 INV 325.00 - 2.5" Ø ORIFICE IN INTERIOR WALL WITHIN MANHOLE
 INV 326.00 - 4" Ø ORIFICE IN INTERIOR WALL WITHIN MANHOLE
 WEIR ELEV 326.60 (TOP OF INTERIOR WALL WITHIN MANHOLE)
 INV 324.33 - 12" OUT
 20' - 10" HDPE, S = 0.1165

FE #3
 322.00

INFILTRATION TRENCH #3
 160' LONG, 10' WIDE, 3.0' HIGH
 BOTTOM OF TRENCH - ELEV 313.00
 BOTTOM OF ADS STORMTECH SC310 SECTION = ELEV 313.50
 INV 313.50
 20' - 12" HDPE, S = 0.02

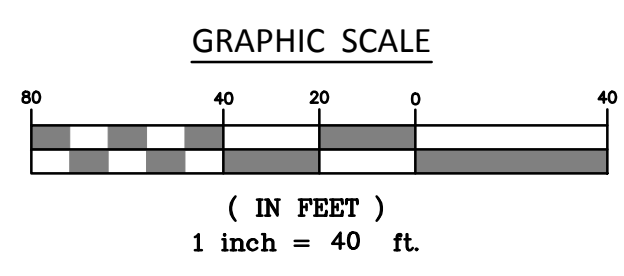
OUTLET CONTROL STRUCTURE #4
 (MANHOLE WITH INTERIOR WALL WITH ORIFICES)
 TF 317.00
 INV 313.10 - 12" IN FROM ADS STORMTECH SC310 SECTION
 INV 313.00 - 2.5" Ø ORIFICE IN INTERIOR WALL WITHIN MANHOLE
 INV 314.00 - 4" Ø ORIFICE IN INTERIOR WALL WITHIN MANHOLE
 WEIR ELEV 315.20 (TOP OF INTERIOR WALL WITHIN MANHOLE)
 INV 312.33 - 8" OUT
 20' - 8" HDPE, S = 0.0215

FE #4
 311.85

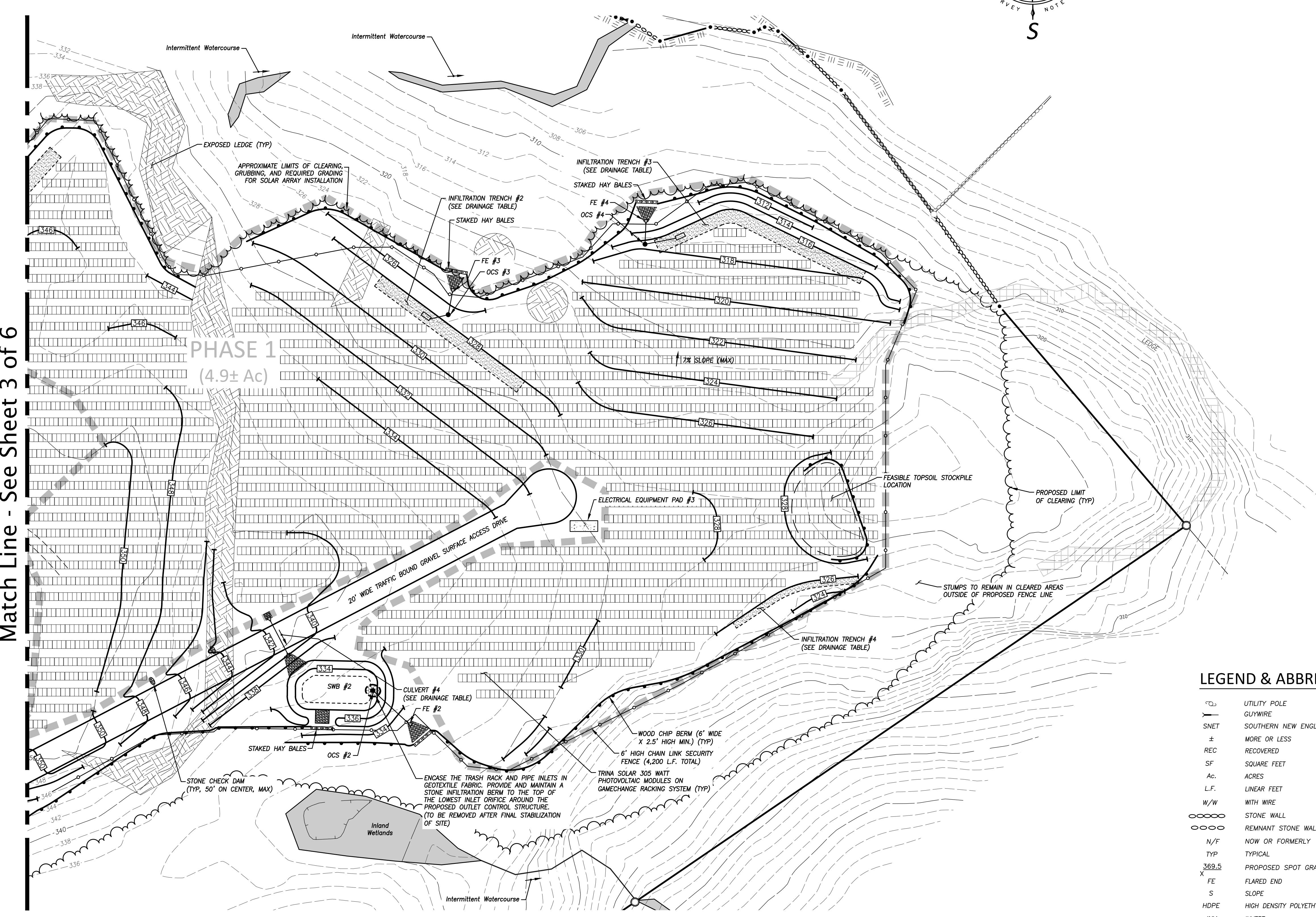
INFILTRATION TRENCH #4
 100' LONG, 5' WIDE, 2.0' HIGH
 BOTTOM OF TRENCH - ELEV 323.00

LEGEND & ABBREVIATIONS

○	UTILITY POLE	•	ANGLE POINT
—	GLYWIRE	○	REBAR WITH CAP
SNET	SOUTHERN NEW ENGLAND TELEPHONE	⊙	DRILL HOLE
±	MORE OR LESS	DH	DRILL HOLE
REC	RECOVERED	RBR	REBAR
SF	SQUARE FEET	REC	RECOVERED
Ac.	ACRES	Δ 4-1	WETLAND FLAG
L.F.	LINEAR FEET	SP	STONE PILE
W/W	WITH WIRE	CFP	CEDAR FENCE POST
○○○○	STONE WALL	— X —	REMNANT WIRE FENCE
○○○○	REMNANT STONE WALL	—	LEDGE
N/F	NOW OR FORMERLY	---	EXISTING CONTOUR
TYP	TYPICAL	---	PROPOSED CONTOUR
369.5	PROPOSED SPOT GRADE	ELEV	ELEVATION
X	FLARED END	OCS	OUTLET CONTROL STRUCTURE
FE	SLOPE	IT	INFILTRATION TRENCH
HDPE	HIGH DENSITY POLYETHYLENE	SWB	STORMWATER BASIN
INV	INVERT		

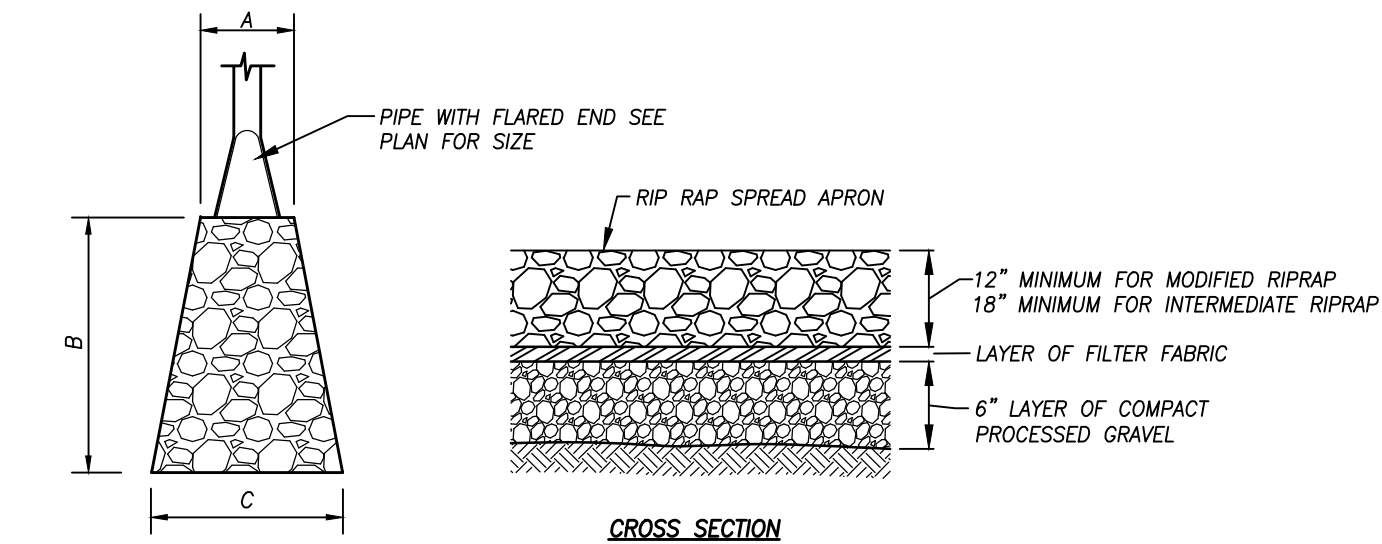
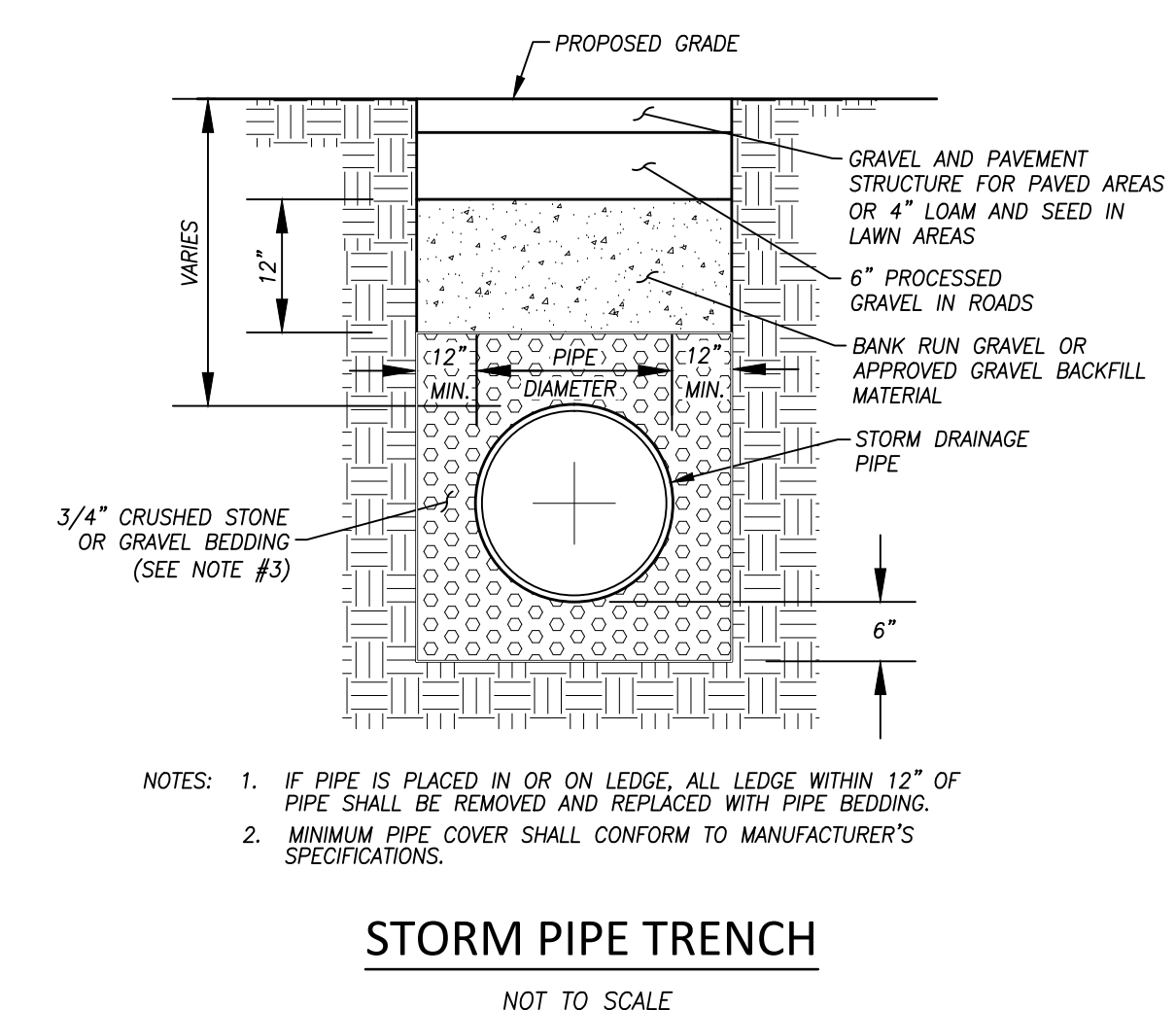
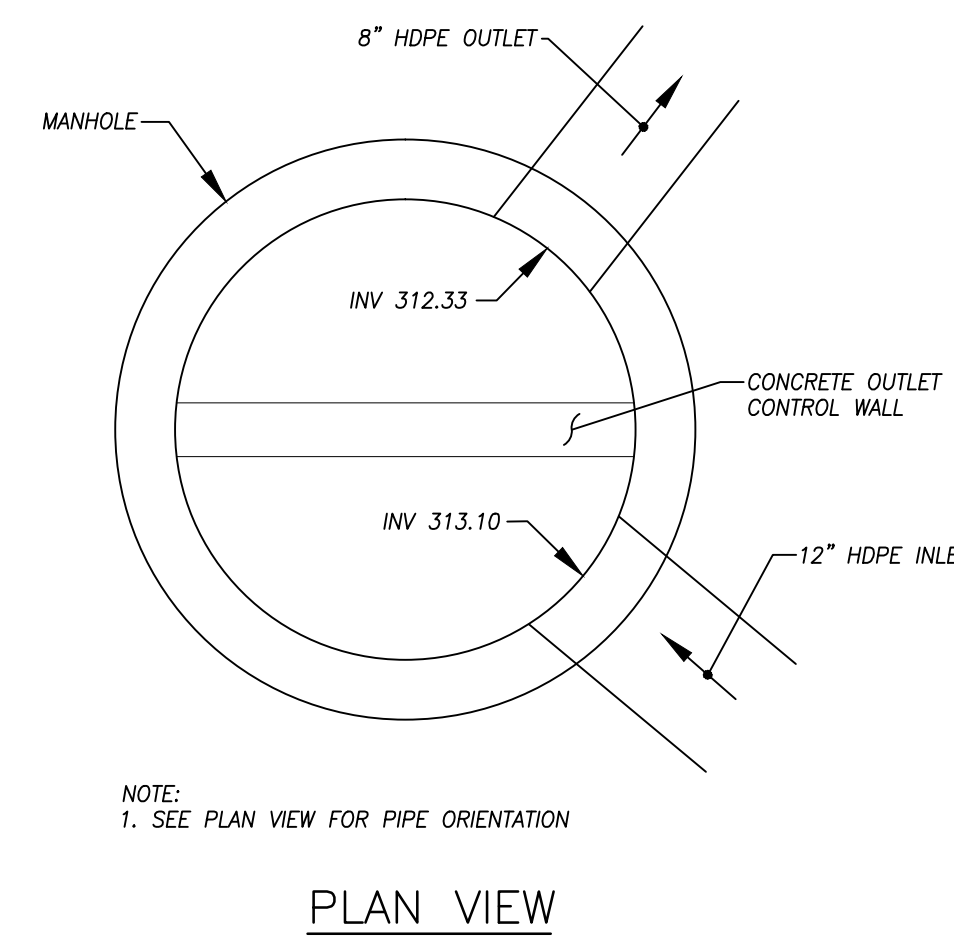
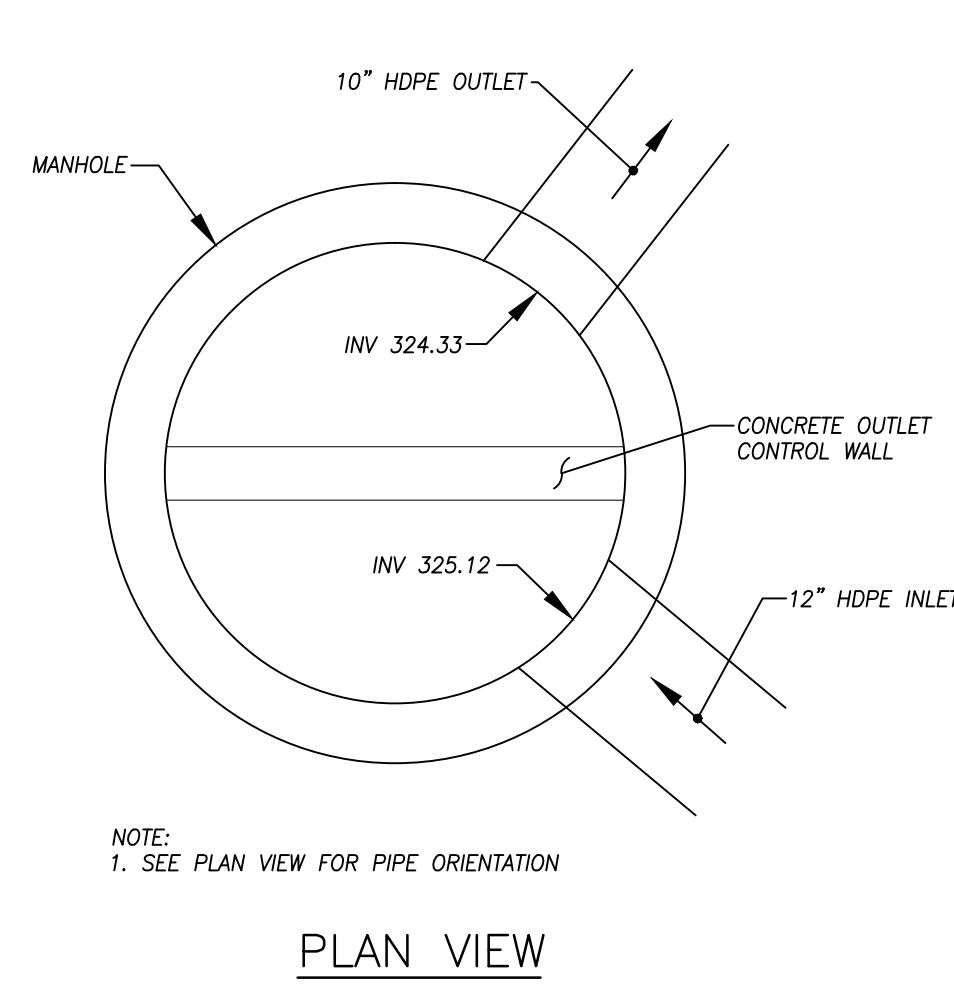
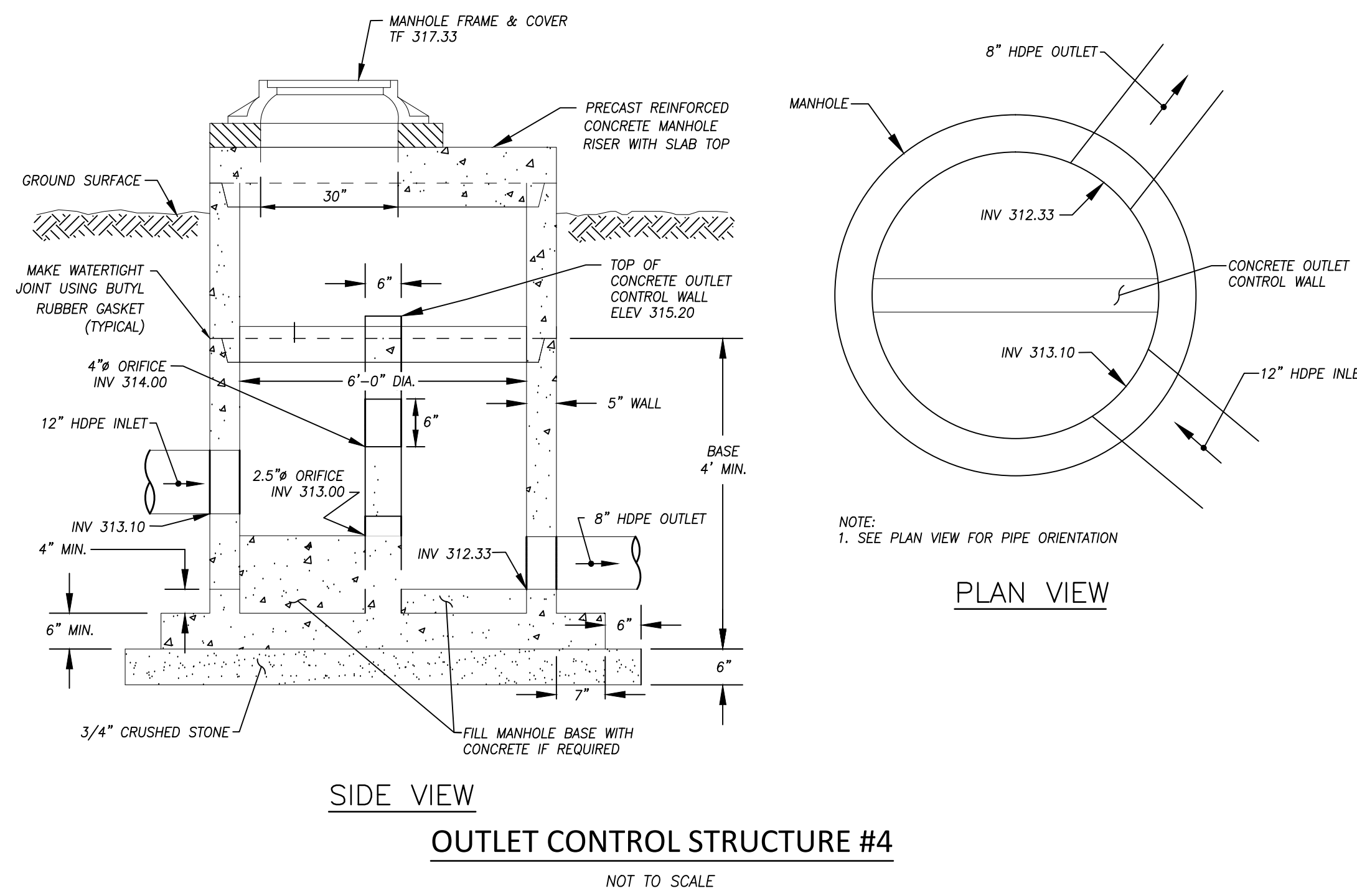
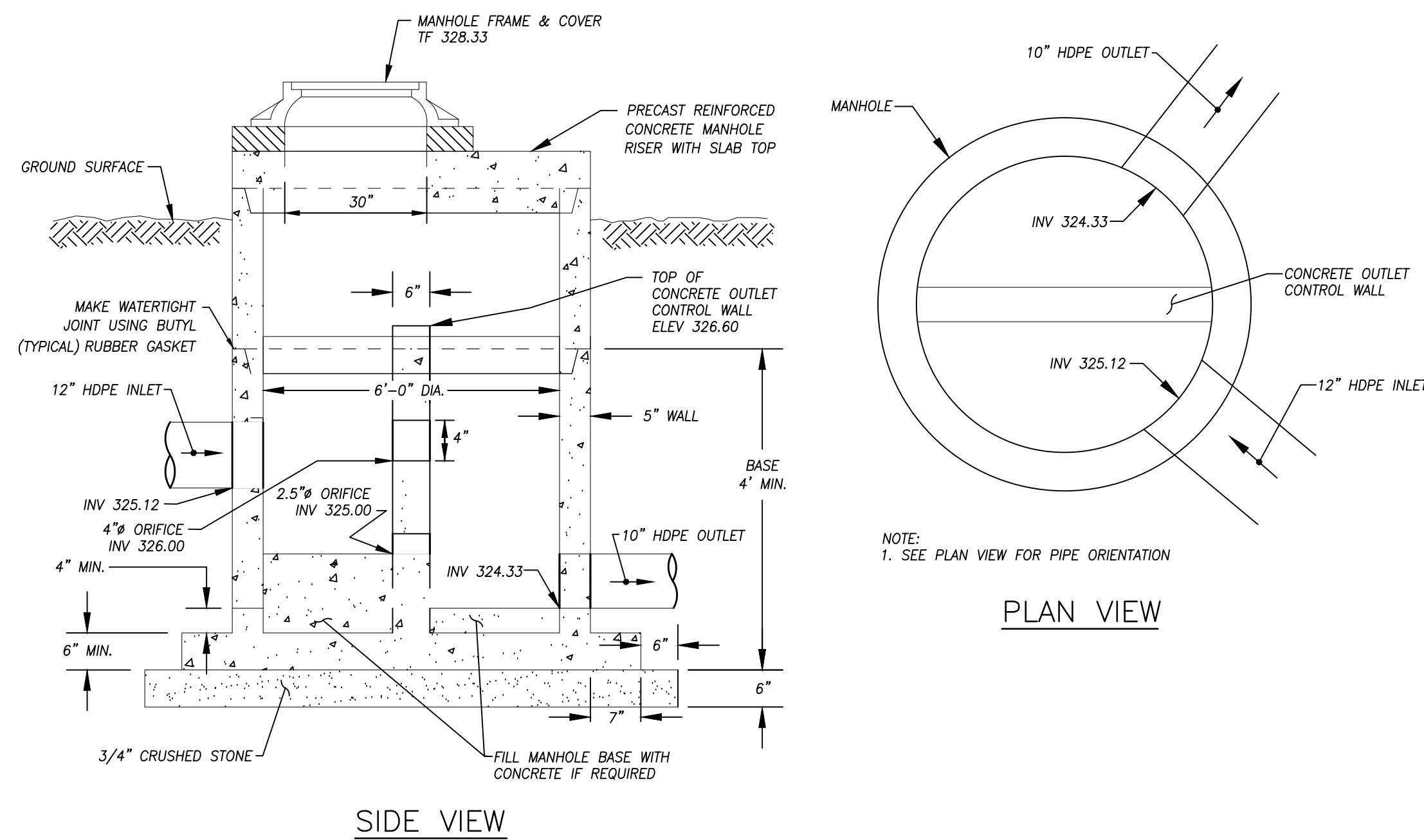
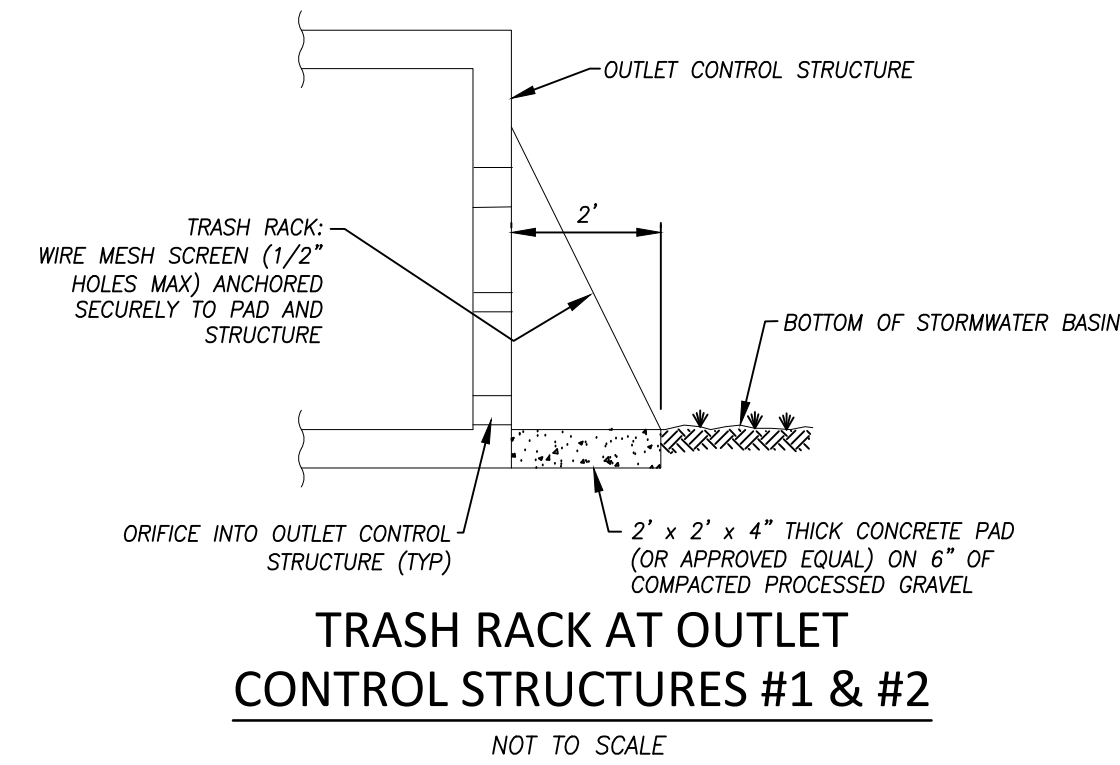
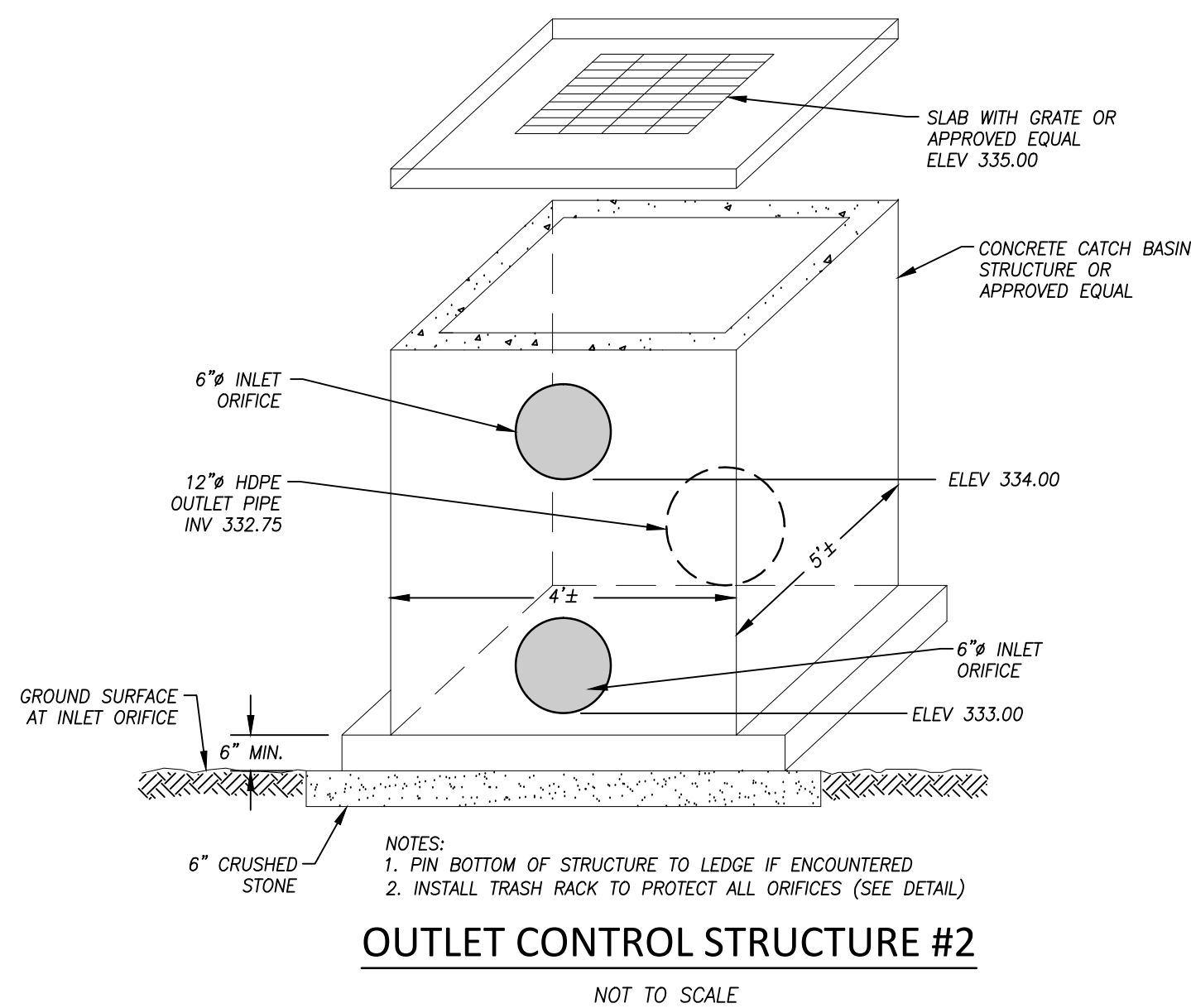
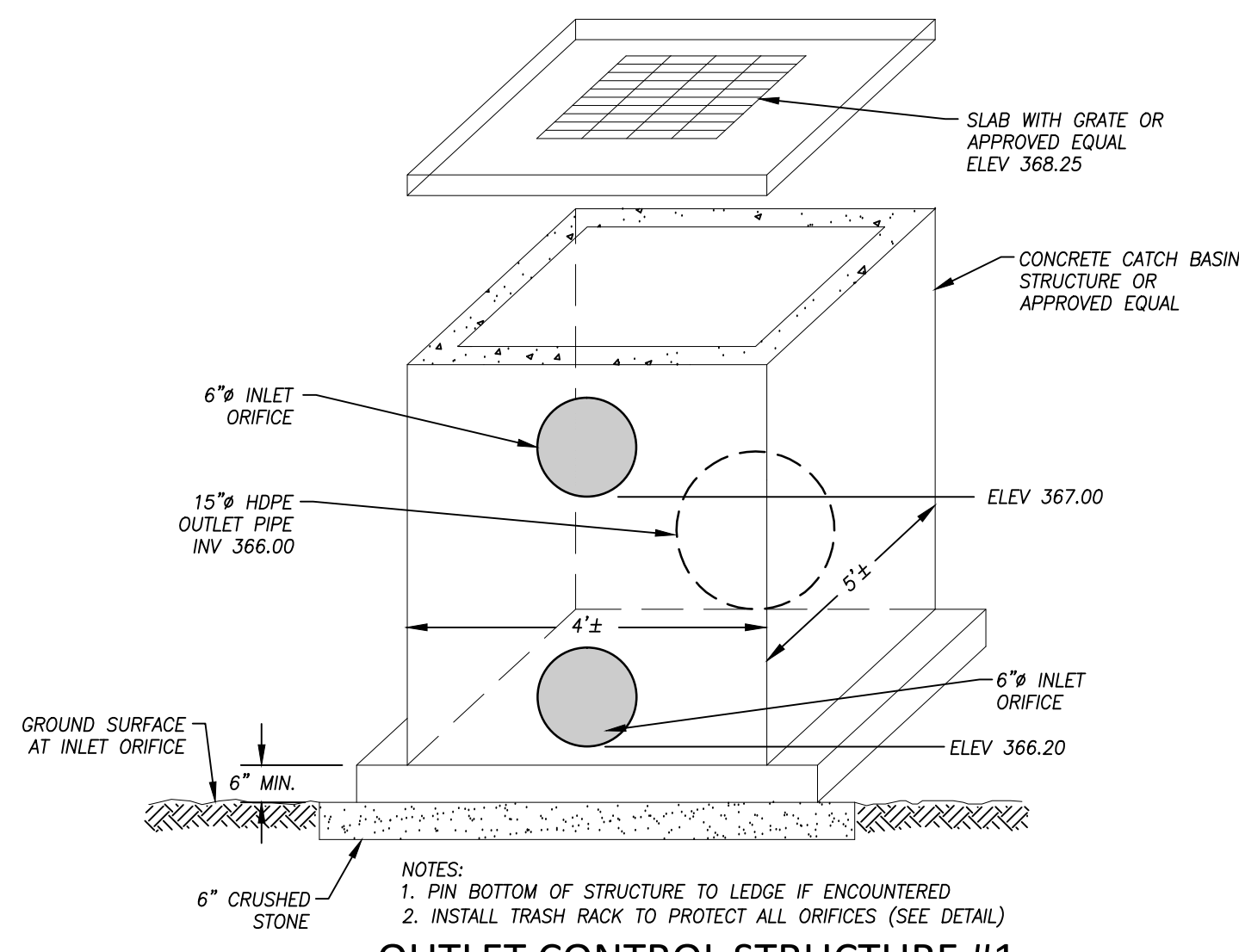


Match Line - See Sheet 3 of 6



P:\CIVIL 3D PROJECTS\2014\14-2279 - BRIGHTFIELDS DEVELOPMENT LLC\DWG\DESIGN\14-2279 BRIGHTFIELDS DEVELOPMENT LLC SITE PLAN.DWG

"TO MY KNOWLEDGE AND BELIEF THIS MAP IS SUBSTANTIALLY
 CORRECT AS NOTED HEREON."



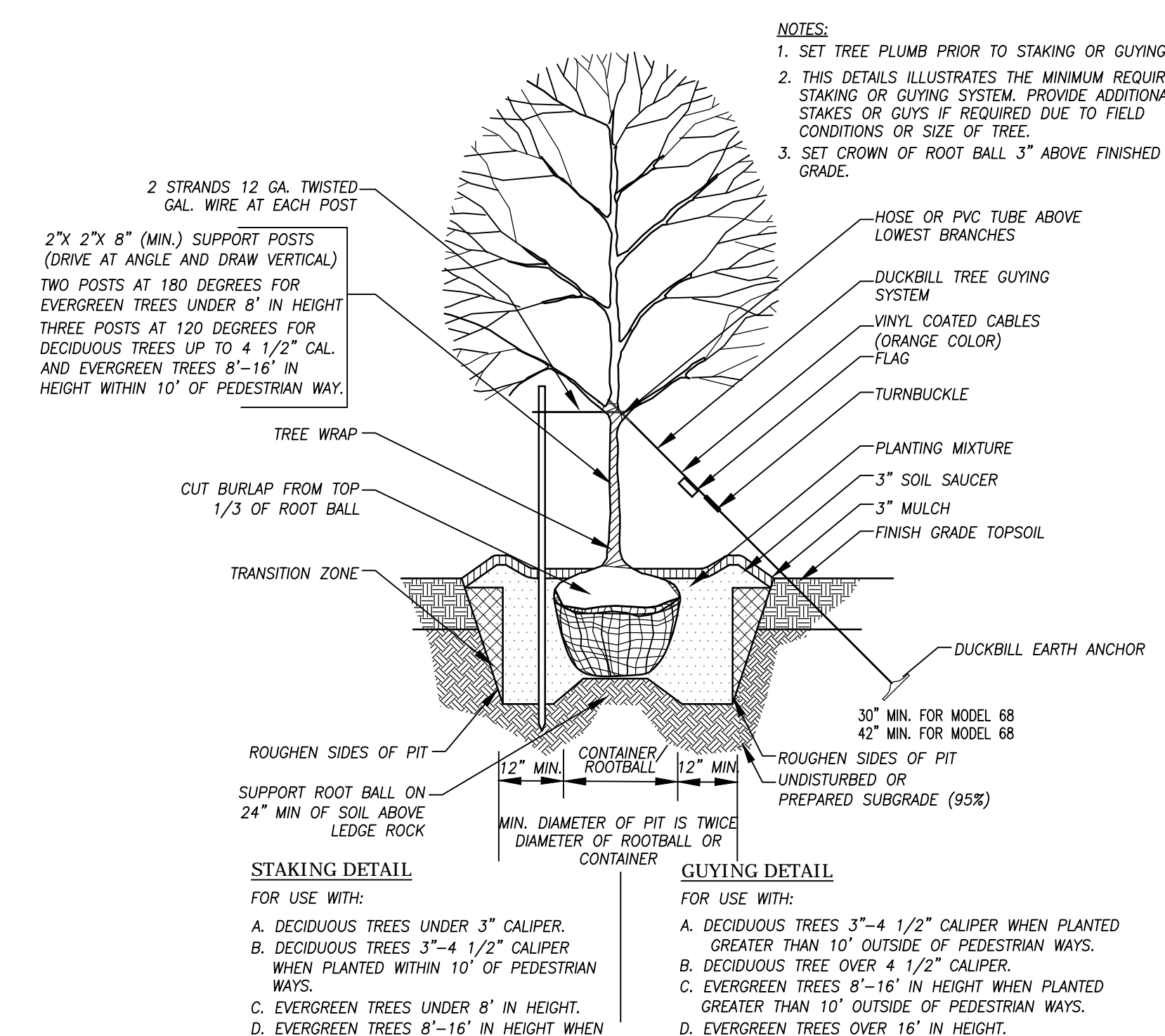
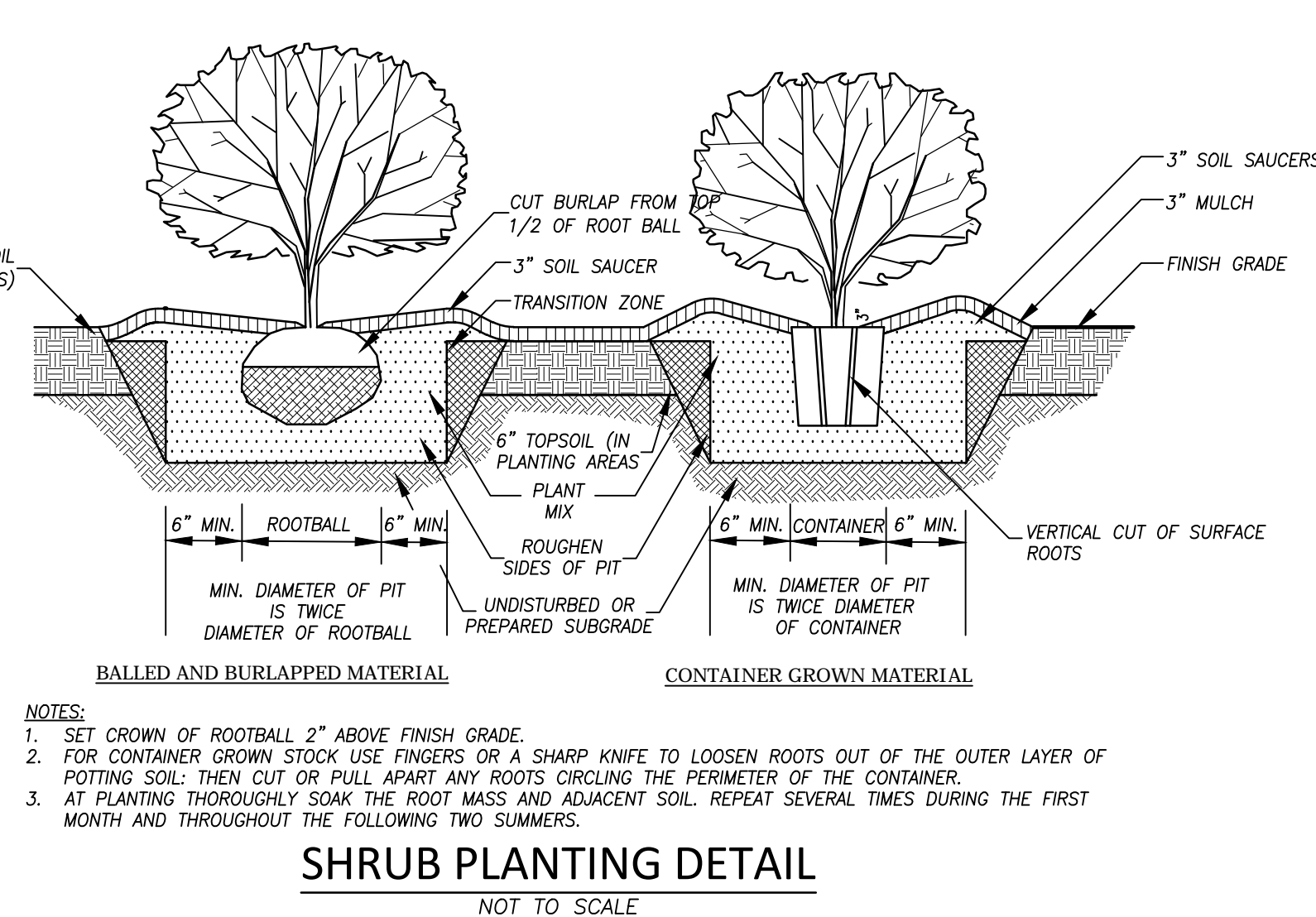
SPREAD APRON TABLE

CULVERT #	PIPE SIZE	A	B	C	RIP RAP SIZE	TYPE
CULVERT #1	12"	5'	5'	5'	MODIFIED	INLET
CULVERT #1	12"	5'	14'	17'	MODIFIED	OUTLET
CULVERT #2	12"	5'	5'	5'	MODIFIED	INLET
CULVERT #2	12"	5'	14'	17'	MODIFIED	OUTLET
CULVERT #3	15"	5'	5'	5'	INTERMEDIATE	INLET
CULVERT #3	15"	5'	19'	23'	INTERMEDIATE	OUTLET
CULVERT #4	12"	5'	5'	5'	MODIFIED	INLET
CULVERT #4	12"	5'	14'	17'	MODIFIED	OUTLET
FE #1	15"	5'	18'	20'	MODIFIED	OUTLET
FE #2	12"	4'	13'	16'	MODIFIED	OUTLET
FE #3	10"	3'	11'	13'	MODIFIED	OUTLET
FE #4	8"	3'	12'	15'	MODIFIED	OUTLET

APRON DESIGN BASED ON 2000 CONDOT DRAINAGE MANUAL

LANDSCAPE SCHEDULE

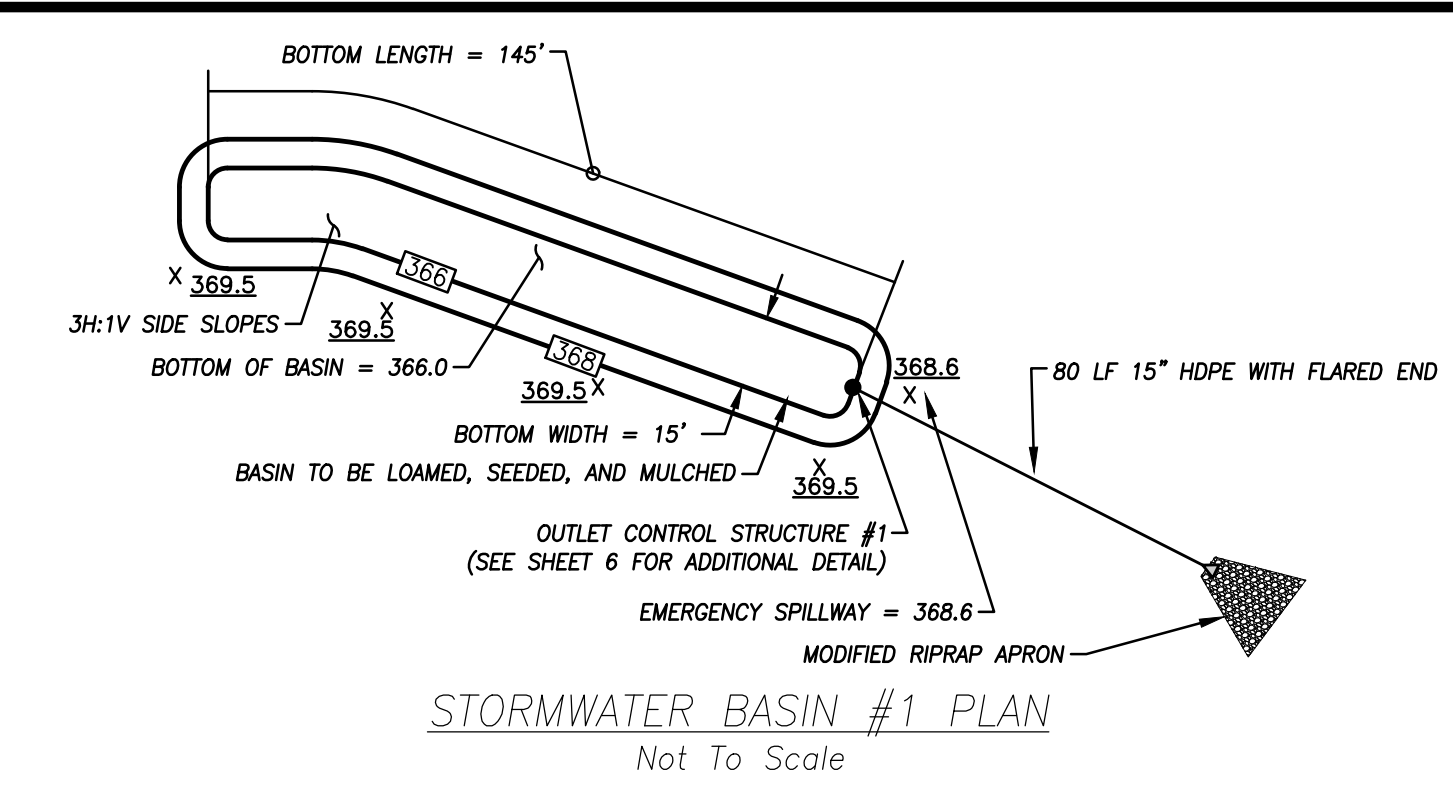
SYMBOL	BOTANICAL NAME	COMMON NAME	SIZE	QUANTITY	COMMENT
ILOP	Ilex Opaca	American Holly	3 Gal.	49	G.G.
THOC2	Thuja (Standishii x Plicata)	"Green Giant" Arborvitae	5'-6" Height	28	C.G.



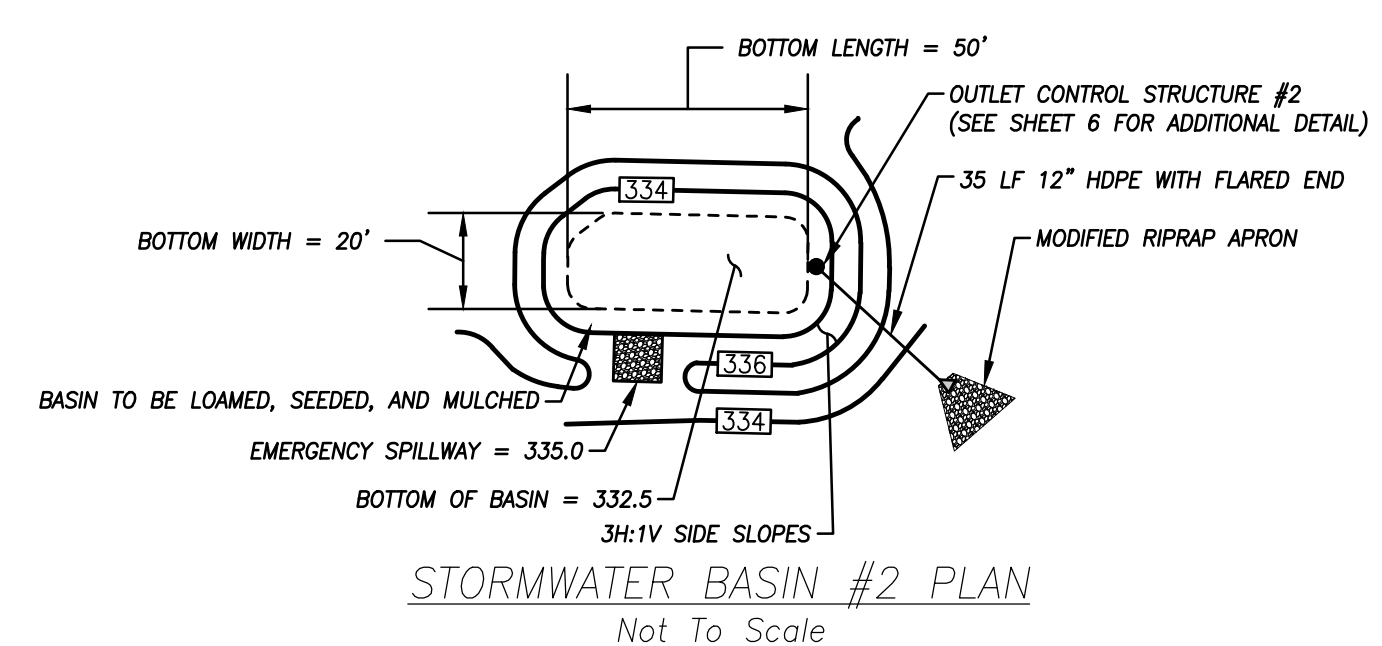
PLANTING SPECIFICATIONS:

- All materials and construction methods shall conform to the requirements of the Connecticut Association of Landscape Contractors Specification. All plants shall be nursery grown and conform to the latest edition of ANSI Z60.1, AMERICAN STANDARD FOR NURSERY STOCK and also the minimum guidelines established for nursery stock published by the American Association of Nurserymen, Inc.
- No substitution of plant materials will be allowed without the prior written consent of the Project Owner. Where a plant size range is provided at least 50% of the plants shall be of the larger size.
- All lawn and planting area soil preparation shall be fertilized and amended according to recommendations of a soil analysis provided by an approved soil testing laboratory.
- All exterior ground areas disturbed by construction and not covered by buildings, structures, paving, continuous planting beds or other site improvements shall be graded, topsoiled to a minimum depth of 4" and grass seeded. Provide lawn development in all areas of selective clearing as directed.
- All plant pits must be free draining. Break up the bottom of the hole by fork if necessary to ensure plant has proper drainage.
- Set all plants in center of plant pits, plumb and straight and as detailed on the drawing. All plant material shall bear the same relationship to finished grade as to original planting grade prior to digging. Trees shall be planted with the junction of roots and stem level with finished grade.
- Handle balled and burlapped plants from the ball only. Once positioned in the hole, remove the top 1/3 of the burlap from the root ball without disturbing the roots.
- Face each plant to give the best appearance. Final location of plant material should be approved by the Project Owner in the field.
- Fill plant pits 2/3 their depth with prepared planting mixture, water thoroughly and allow to settle. Complete back-filling, water thoroughly to eliminate any voids and air pockets. Provide additional back-fill as necessary to conform to required elevation and as detailed.
- Form saucer and install mulch over entire plant pit and saucer area as detailed.
- All tree staking or guying shall be completed immediately after planting, but in no instance more than 24 hours after planting. See staking/guying detail. At the completion of the maintenance period remove all stakes, flags, guys, tree wrap, and anchors.
- Mulch all new shrub beds and plant pits to achieve a 3" depth after settlement. Mulch all ground cover beds to achieve a 2" depth after settlement. Mulch for saucers and planting areas to be a double shredded bark mulch.
- All plants shall be guaranteed for a period of one full year after inspection and acceptance by the Owner's representative, and shall have at least 80% healthy growth at the end of the guarantee period.
- Landscape planting materials as proposed by this plan are Connecticut native and/or non-invasive species. This landscape plan has been designed to incorporate species which are prolific in USDA plant hardness zone 6b and which require minimal energy input for upkeep and maintenance. References utilized for Connecticut native and non-invasive species selection include the Connecticut Botanical Society, the Connecticut agricultural experiment station, the U.S. Department of Transportation Federal Highway Administration, 2004 Connecticut Stormwater Quality Manual, New England Wetland Plants, Inc., and other sources.

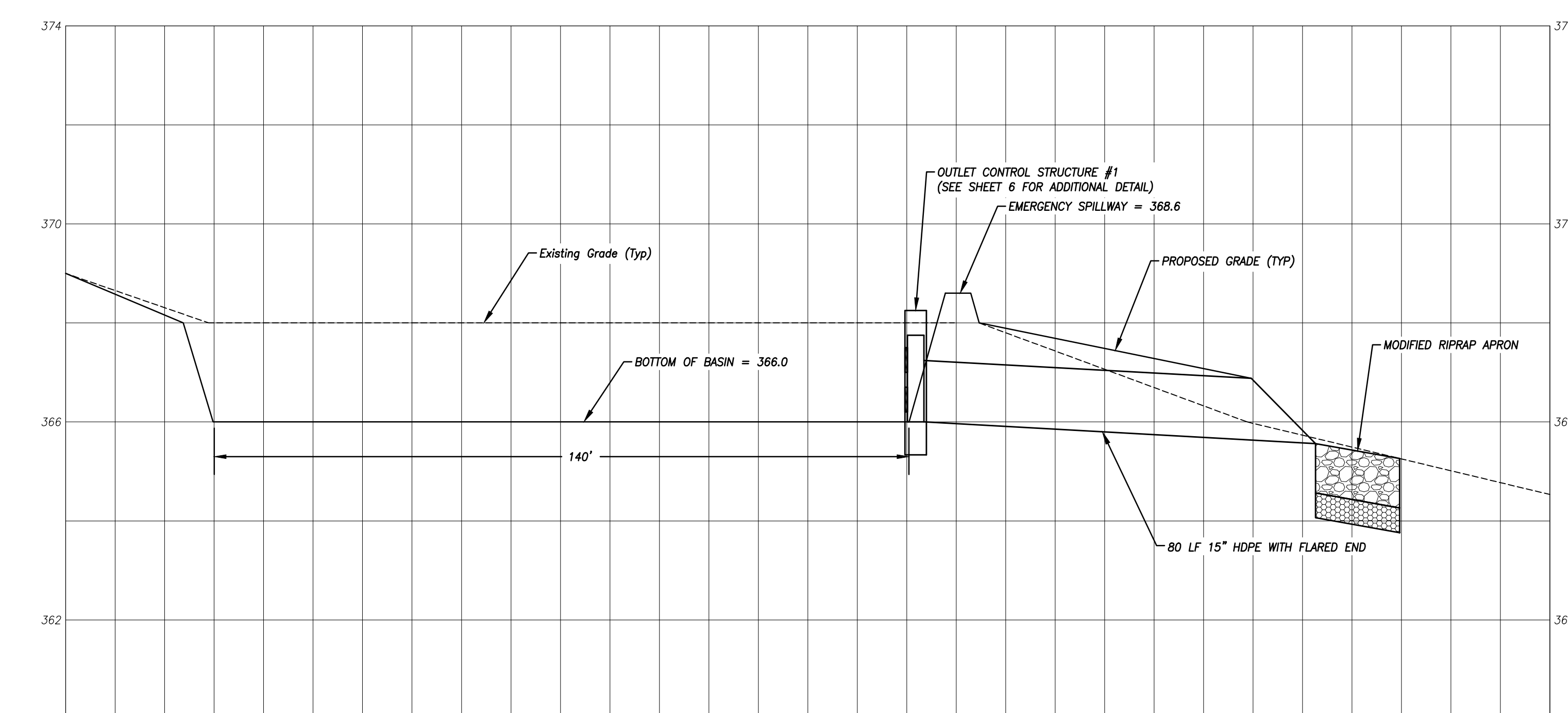
P:\CIVIL 3D PROJECTS\2014\14-2279 - BRIGHTFIELDS DEVELOPMENT LLC\DWG\DESIGN\14-2279 BRIGHTFIELDS DEVELOPMENT LLC - SITE PLAN.DWG



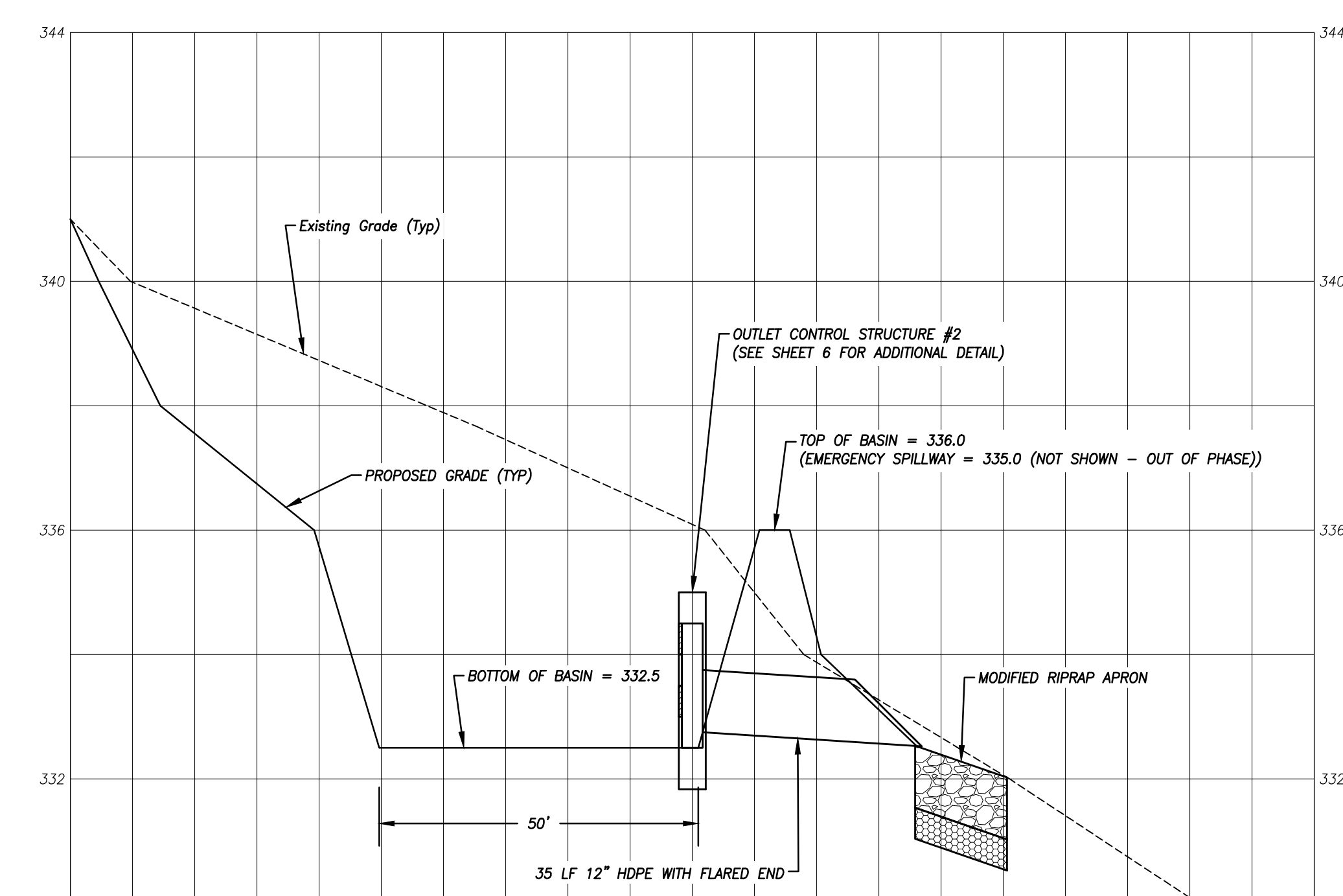
STORMWATER BASIN #1 PLAN
 Not To Scale



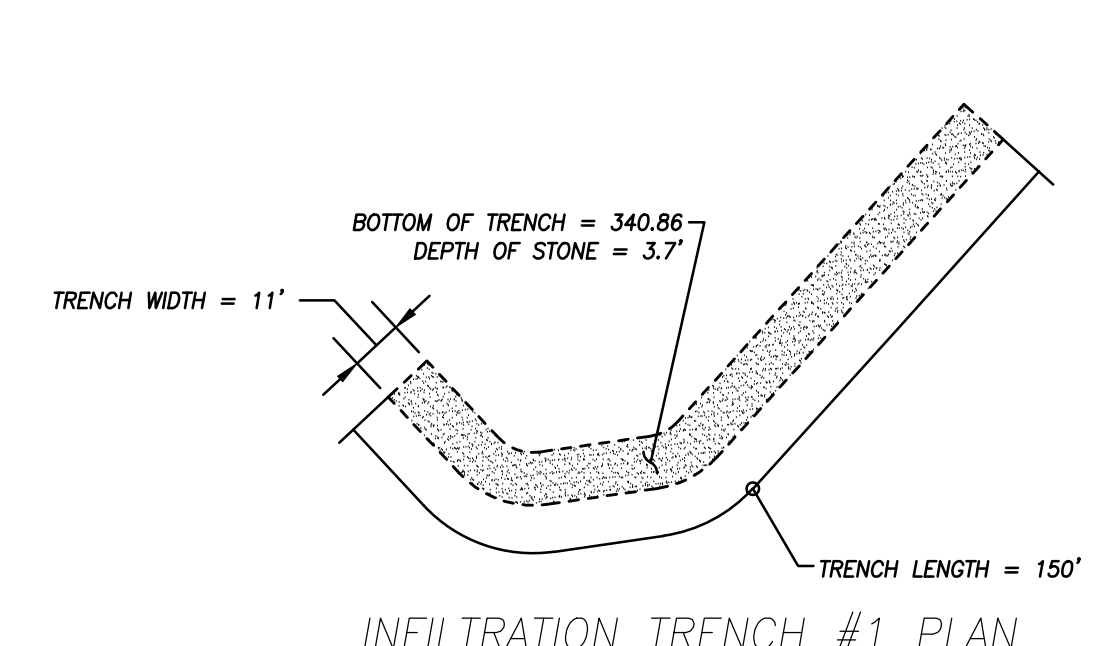
STORMWATER BASIN #2 PLAN
 Not To Scale



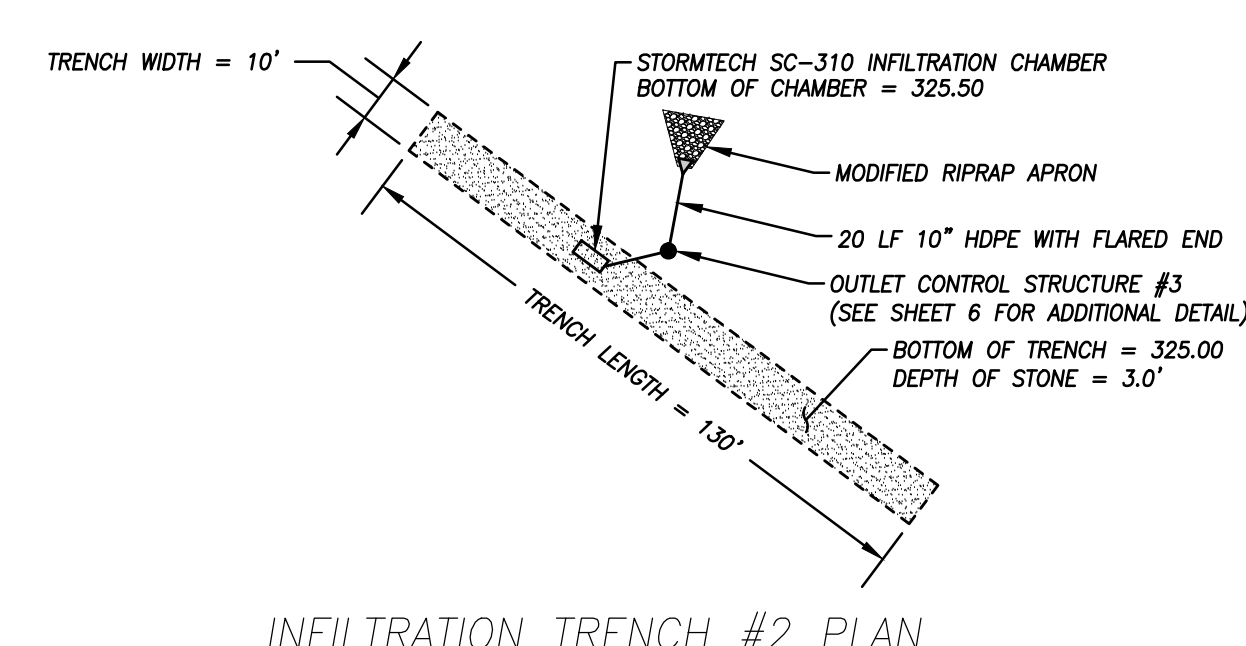
STORMWATER BASIN #1
 Horizontal Scale: 1"=20'
 Vertical Scale: 1"=2'



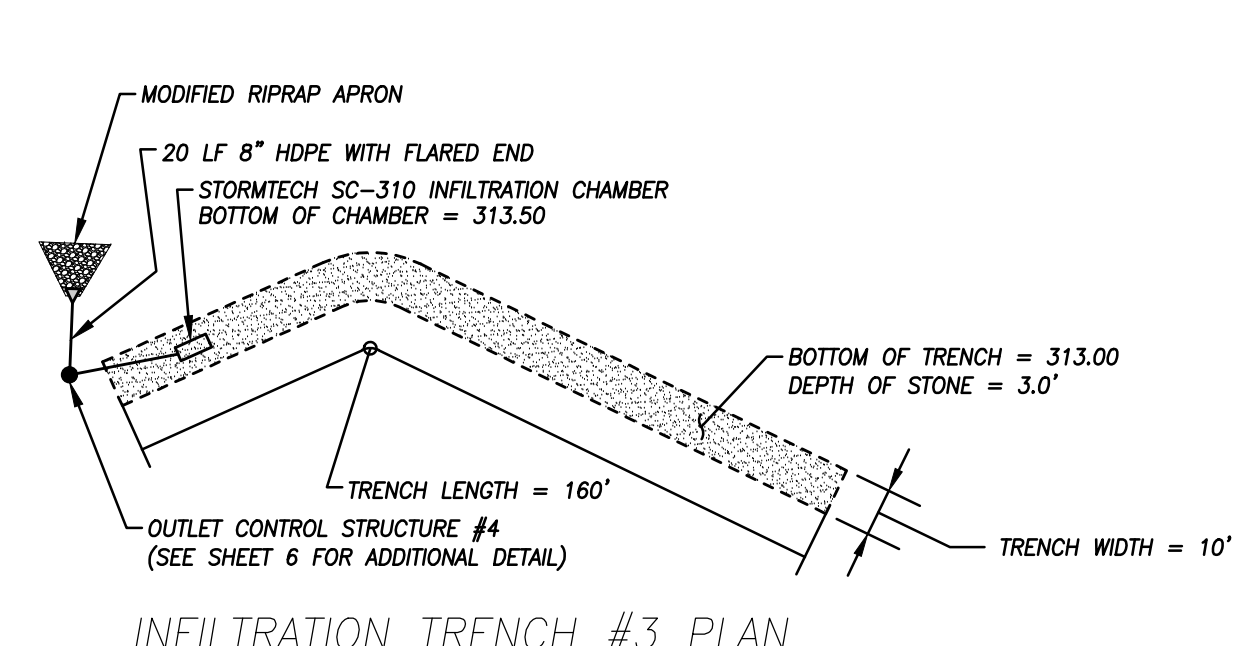
STORMWATER BASIN #2
 Horizontal Scale: 1"=20'
 Vertical Scale: 1"=2'



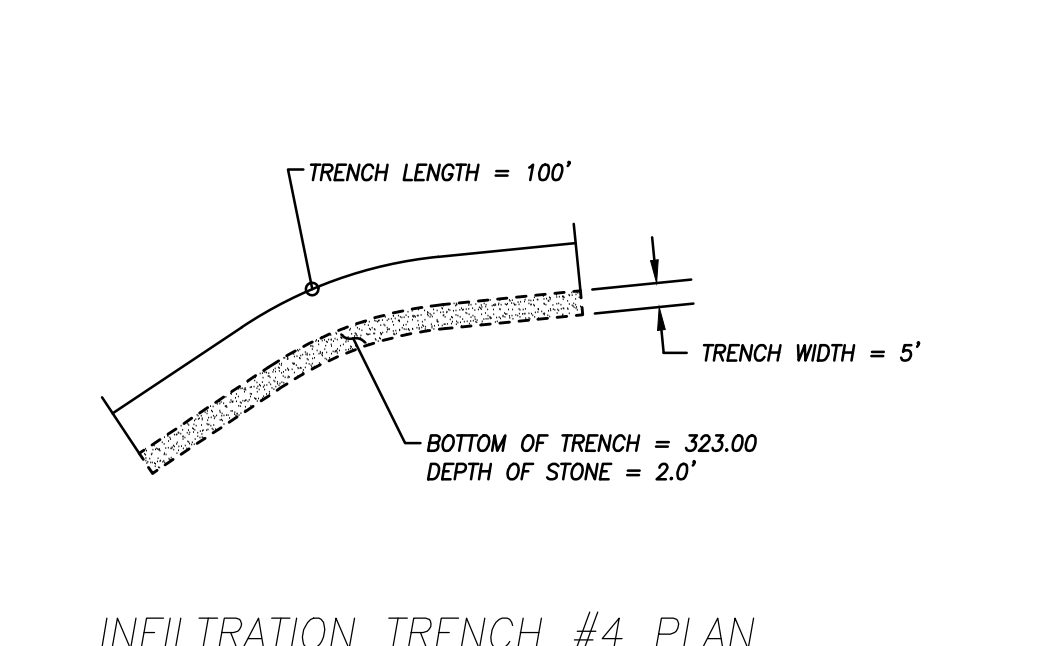
INFILTRATION TRENCH #1 PLAN



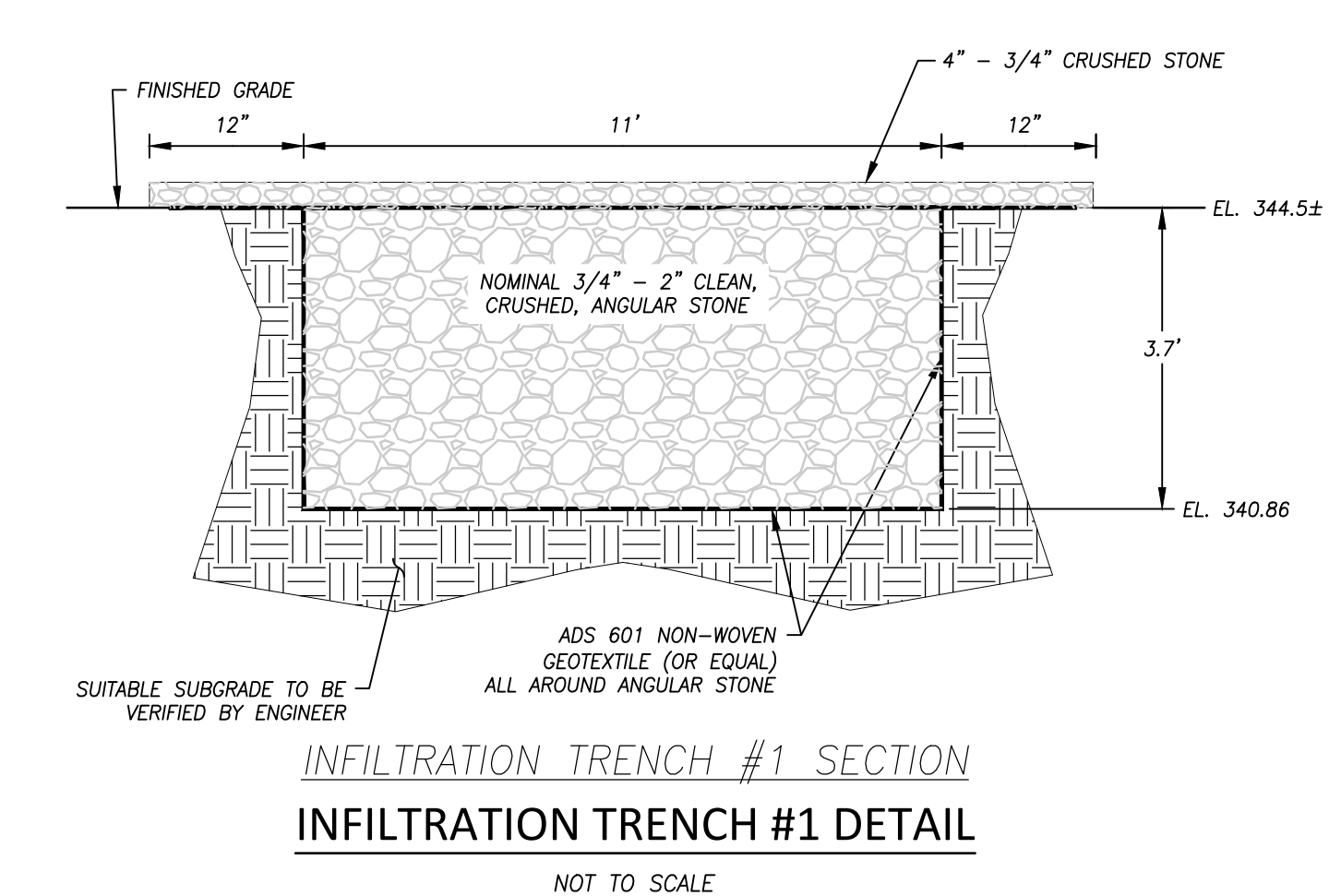
INFILTRATION TRENCH #2 PLAN



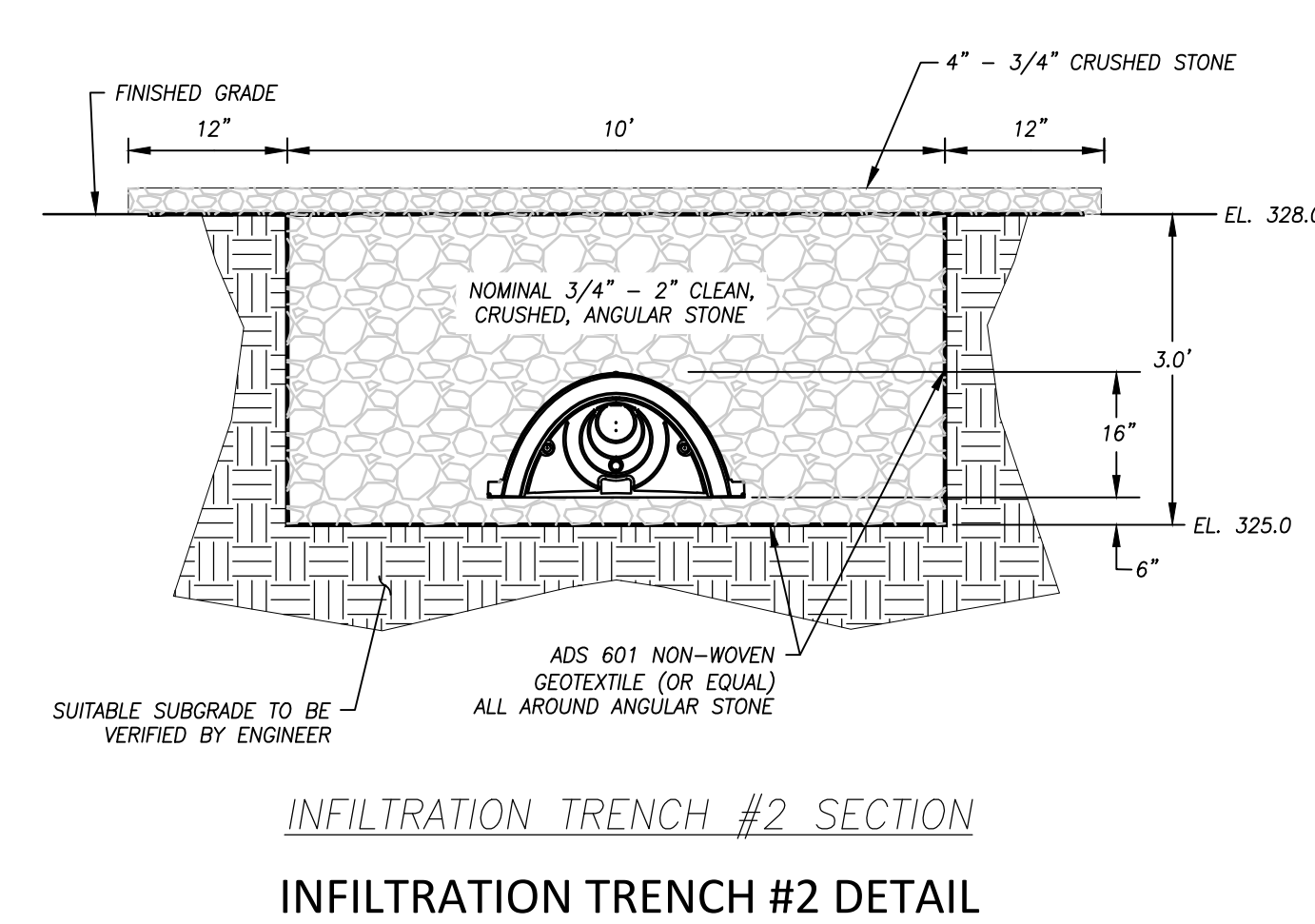
INFILTRATION TRENCH #3 PLAN



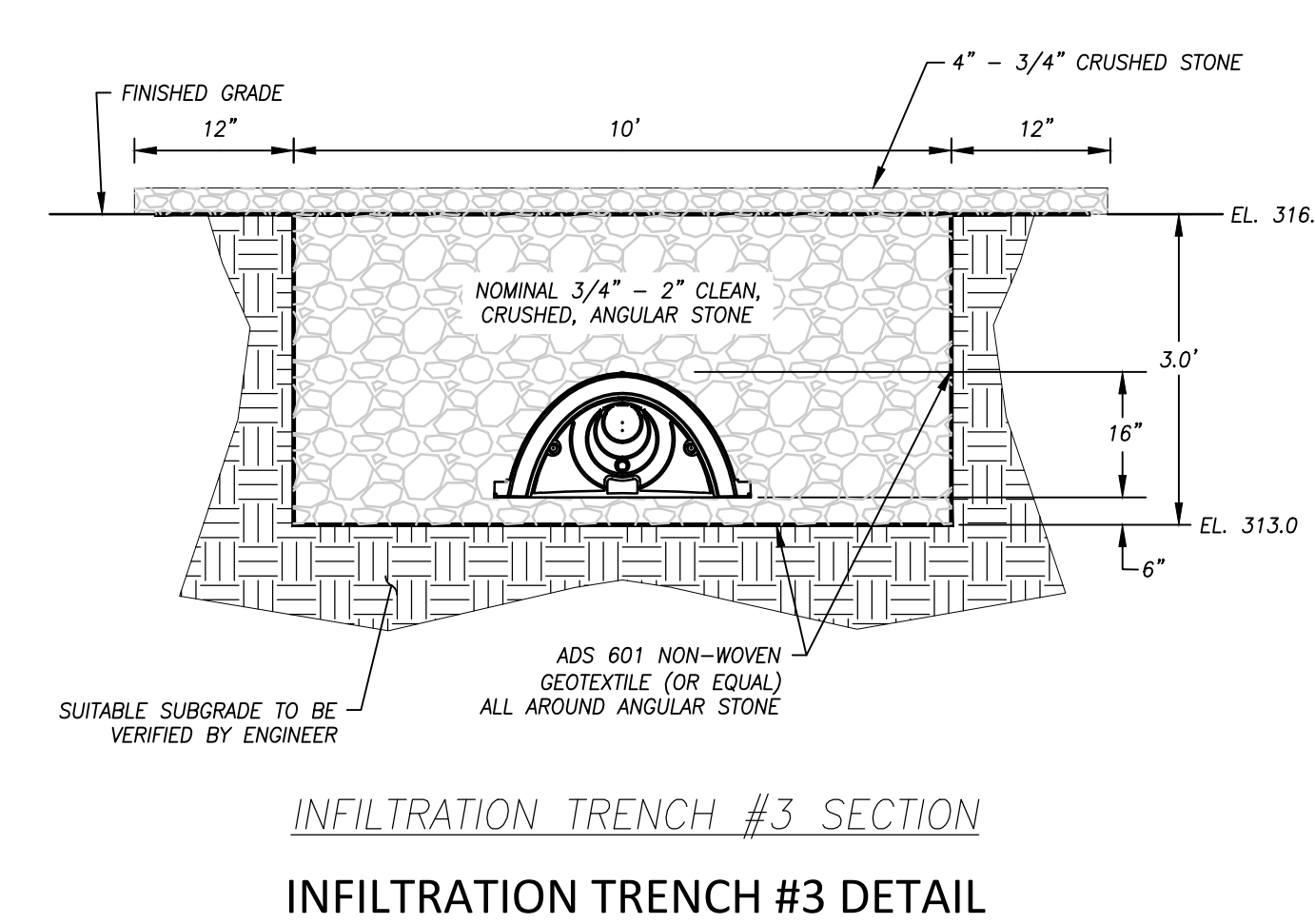
INFILTRATION TRENCH #4 PLAN



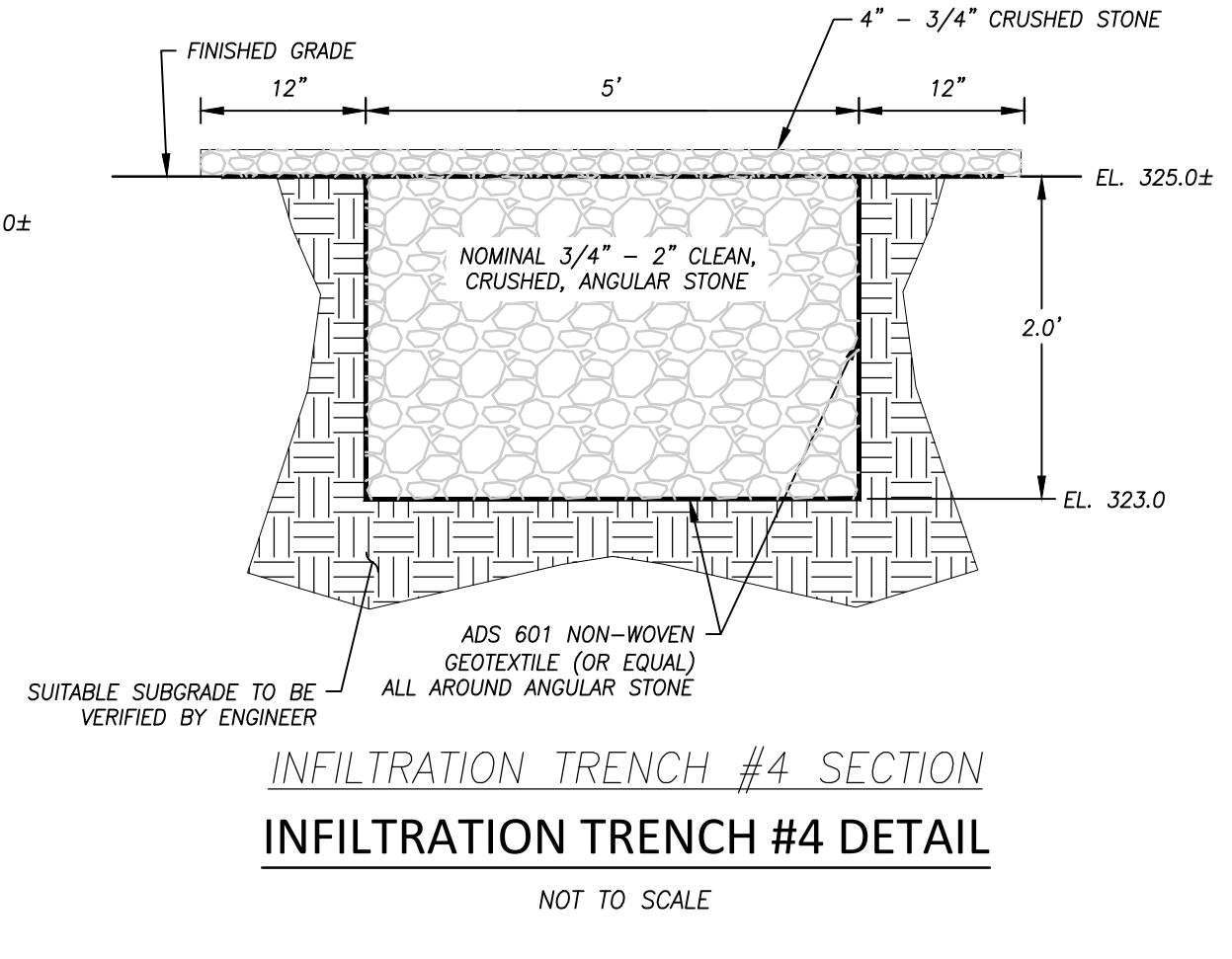
INFILTRATION TRENCH #1 SECTION
INFILTRATION TRENCH #1 DETAIL
 NOT TO SCALE



INFILTRATION TRENCH #2 SECTION
INFILTRATION TRENCH #2 DETAIL
 NOT TO SCALE



INFILTRATION TRENCH #3 SECTION
INFILTRATION TRENCH #3 DETAIL
 NOT TO SCALE



INFILTRATION TRENCH #4 SECTION
INFILTRATION TRENCH #4 DETAIL
 NOT TO SCALE

P:\CIVIL 3D PROJECTS\2014\14-2279 - BRIGHTFIELDS DEVELOPMENT LLC\DWG\DESIGN\14-2279 BRIGHTFIELDS DEVELOPMENT LLC SITE PLAN.DWG

SCALE:	None
DATE:	October 2014
JOB I.D. NO.	14-2279
Revisions	
Rev. A -	New panel layout (GameChange) - 12/19/14
Rev. B -	Per Siting Council Verbal Comments - 5/13/15
Rev. C -	Per BL&P/Town Comments - 5/20/15
SHEET NO.	
7	