

LOCATION MAP

N.T.S.

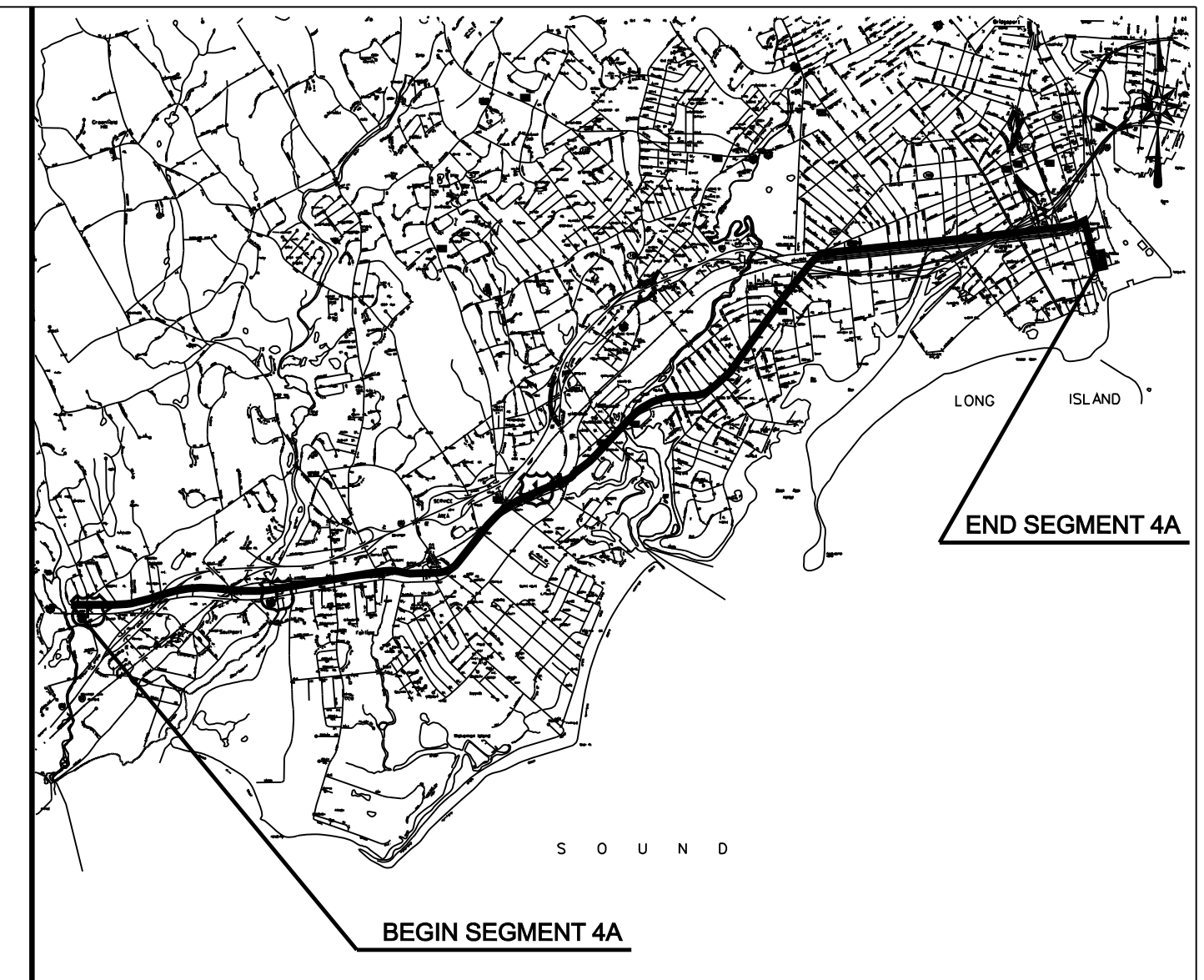


PLANS FOR THE CONSTRUCTION  
OF THE  
MIDDLETOWN-NORWALK  
345-kV TRANSMISSION LINE PROJECT

SEGMENT 4A

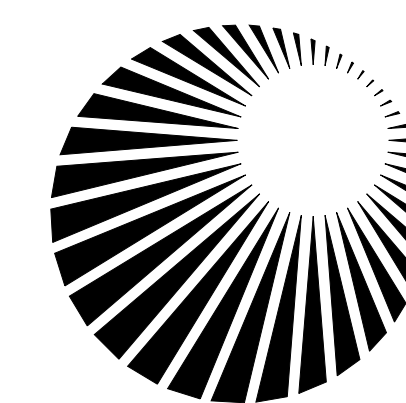
TOWN OF FAIRFIELD / CITY OF BRIDGEPORT, CONNECTICUT

CONNECTICUT SITING COUNCIL  
DOCKET NO. 272



VICINITY MAP

N.T.S.



Connecticut  
Light & Power  
The Northeast Utilities System


PAGE INDEX

DRAWING INDEX:

DWG NO	TITLE/DESCRIPTION	DWG NO	TITLE/DESCRIPTION
01224-0000 PG 001	CONSTRUCTION SET	01224-10001 PG 088	TOWN OF FAIRFIELD/CITY OF BRIDGEPORT P & P Sta 627+00 TO 631+00
01224-00001 PG 003	TOWN BOUNDARY OF WESTPORT/FAIRFIELD TO SINGER SS PAGE INDEX	01224-10001 PG 089	CITY OF BRIDGEPORT P & P Sta 644+00 TO 649+00
01224-00001 PG 004	GENERAL NOTES AND LEGEND	01224-10001 PG 090	CITY OF BRIDGEPORT P & P Sta 648+50 TO 657+50
01224-10002 PG 003	TOWN OF FAIRFIELD INDEX KEY MAP	01224-10001 PG 091	CITY OF BRIDGEPORT P & P Sta 656+00 TO 664+50
01224-10002 PG 004	CITY OF BRIDGEPORT INDEX KEY MAP	01224-10001 PG 092	CITY OF BRIDGEPORT P & P Sta 663+50 TO 672+00
01224-10002 PG 009	TOWN OF FAIRFIELD ROUTE DATA TABLES	01224-10001 PG 093	CITY OF BRIDGEPORT P & P Sta 671+00 TO 680+00
01224-10002 PG 010	TOWN OF FAIRFIELD ROUTE DATA TABLES	01224-10001 PG 094	CITY OF BRIDGEPORT P & P Sta 679+50 TO 688+50
01224-10002 PG 011	CITY OF BRIDGEPORT ROUTE DATA TABLES	01224-10001 PG 095	CITY OF BRIDGEPORT P & P Sta 687+50 TO 696+50
01224-10002 PG 012	CITY OF BRIDGEPORT ROUTE DATA TABLES	01224-10001 PG 096	CITY OF BRIDGEPORT P & P Sta 694+50 TO 703+50
01224-10001 PG 063	TOWN OF FAIRFIELD P & P Sta 443+00 TO 451+50	01224-10001 PG 097	CITY OF BRIDGEPORT P & P Sta 703+00 TO 712+00
01224-10001 PG 064	TOWN OF FAIRFIELD P & P Sta 450+00 TO 459+00	01224-10001 PG 098	CITY OF BRIDGEPORT P & P Sta 710+50 TO 719+50
01224-10001 PG 065	TOWN OF FAIRFIELD P & P Sta 457+00 TO 466+00	01224-10001 PG 099	CITY OF BRIDGEPORT P & P Sta 717+50 TO 726+00
01224-10001 PG 066	TOWN OF FAIRFIELD P & P Sta 464+50 TO 473+50	01224-10001 PG 100	CITY OF BRIDGEPORT P & P Sta 725+50 TO 734+50
01224-10001 PG 067	TOWN OF FAIRFIELD P & P Sta 472+00 TO 480+50	01224-10001 PG 101	CITY OF BRIDGEPORT P & P Sta 733+00 TO 742+00
01224-10001 PG 068	TOWN OF FAIRFIELD P & P Sta 478+00 TO 487+00	01224-10001 PG 102	CITY OF BRIDGEPORT P & P Sta 740+50 TO 749+50
01224-10001 PG 069	TOWN OF FAIRFIELD P & P Sta 484+50 TO 493+00	01224-10001 PG 103	CITY OF BRIDGEPORT P & P Sta 748+50 TO 757+50
01224-10001 PG 070	TOWN OF FAIRFIELD P & P Sta 491+50 TO 500+50	01224-10001 PG 104	CITY OF BRIDGEPORT P & P Sta 756+75 TO 765+00
01224-10001 PG 071	TOWN OF FAIRFIELD P & P Sta 499+00 TO 507+00	01224-10001 PG 105	CITY OF BRIDGEPORT P & P Sta 764+50 TO 773+50
01224-10001 PG 072	TOWN OF FAIRFIELD P & P Sta 505+50 TO 514+50	01224-10001 PG 106	CITY OF BRIDGEPORT P & P Sta 771+50 TO 780+00
01224-10001 PG 073	TOWN OF FAIRFIELD P & P Sta 513+50 TO 522+00	01224-10001 PG 107	CITY OF BRIDGEPORT P & P Sta 779+00 TO 788+00
01224-10001 PG 074	TOWN OF FAIRFIELD P & P Sta 521+50 TO 530+00	01224-10001 PG 108	CITY OF BRIDGEPORT P & P Sta 786+50 TO 795+50
01224-10001 PG 075	TOWN OF FAIRFIELD P & P Sta 529+50 TO 538+50	01224-10001 PG 109	CITY OF BRIDGEPORT P & P Sta 793+00 TO 802+00
01224-10001 PG 076	TOWN OF FAIRFIELD P & P Sta 537+50 TO 546+00	01224-10001 PG 110	CITY OF BRIDGEPORT P & P Sta 801+75 TO 810+50
01224-10001 PG 077	TOWN OF FAIRFIELD P & P Sta 543+50 TO 552+50	01224-10001 PG 111	CITY OF BRIDGEPORT P & P Sta 809+00 TO SINGER S/S (CIRCUIT 3280)
01224-10001 PG 078	TOWN OF FAIRFIELD P & P Sta 550+50 TO 559+50	01224-10001 PG 112	CITY OF BRIDGEPORT P & P Sta 678+00 TO 682+34
01224-10001 PG 079	TOWN OF FAIRFIELD P & P Sta 557+50 TO 566+00	01224-10001 PG 113	CITY OF BRIDGEPORT P & P Sta 0+00 TO SINGER S/S (CIRCUIT 3921)
01224-10001 PG 080	TOWN OF FAIRFIELD P & P Sta 564+50 TO 573+00	01224-45003 PG 001	VAULT, GROUNDING AND HANDHOLE DETAILS
01224-10001 PG 081	TOWN OF FAIRFIELD P & P Sta 570+50 TO 579+50	01224-45003 PG 002	VAULT AND GROUNDING DETAILS
01224-10001 PG 082	TOWN OF FAIRFIELD P & P Sta 579+00 TO 587+50	01224-45003 PG 003	REMOVED
01224-10001 PG 083	TOWN OF FAIRFIELD P & P Sta 587+00 TO 596+00	01224-45003 PG 006	TYPICAL/CROSSING SPLICE VAULT DETAILS
01224-10001 PG 084	TOWN OF FAIRFIELD P & P Sta 595+00 TO 604+00	01224-45003 PG 010	CONDUIT TRANSITIONS
01224-10001 PG 085	TOWN OF FAIRFIELD P & P Sta 603+00 TO 612+00	01224-46003 PG 001	TYPICAL DUCT BANK DETAILS
01224-10001 PG 086	TOWN OF FAIRFIELD P & P Sta 611+00 TO 620+00	01224-46003 PG 002	UTILITY BRIDGE DUCT BANK DETAILS AND UTILITY CROSSING DETAIL
01224-10001 PG 087	TOWN OF FAIRFIELD P & P Sta 618+50 TO 627+50	01224-46003 PG 004	JACK AND BORE, HORIZONTAL DIRECTIONAL DRILL AND UTILITY BRIDGE DUCT BANK DETAILS
		01224-46003 PG 005	CABLE AND TEMPERATURE MONITORING DETAILS
		01224-46003 PG 007	SINGER SS DUCT BANK DETAILS
		01224-15003 PG 001	EROSION CONTROL DETAILS
		01224-15003 PG 002	EROSION CONTROL DETAILS
		<u>FOR REFERENCE ONLY</u>	
		25251-412	SINGER SUBSTATION RACEWAY DETAILS
		25251-518	SINGER SUBSTATION GIS BUILDING RACEWAY PLAN- FLOOR
		24214-090	SINGER SUBSTATION UNDERGROUND TRANSMISSION LINES GENERAL LAYOUT

DOCKET No. 272

**ISSUED FOR  
CONSTRUCTION**

									
date 08/15/05					detailed L. ROWSE				
designed C. COURTRIGHT					checked S. NEWLAND				
no. date revisions by chk									
1 5/10/07 ISSUED CSC REVISED CTC									
no. date revisions by chk									
MF NO. DATE REVISIONS BY CHK APP APP									
NORTHEAST UTILITIES SERVICE CO.									
FOR THE CONNECTICUT LIGHT & POWER COMPANY									
TITLE MIDDLETOWN-NORWALK 345KV TRANSMISSION PROJECT									
TOWN BOUNDARY OF WESTPORT/FAIRFIELD TO SINGER SS PAGE INDEX									
BY SEN-BMCD		CHKD		APP		APP			
DATE 8-15-05		DATE		DATE		DATE			
SCALE AS NOTED		D		DWG. NO.		01224-00001 PG 003			

ABBREVIATIONS

LEGEND

GENERAL NOTES

<u>BUILDINGS</u>		<u>UTILITY - GAS</u>	
GAR.	GARAGE	GG	GAS GATE
<u>GUIDE RAILS</u>		ST.	STEEL
MBR	METAL BEAM RAIL	<u>PIPE MATERIALS</u>	
CGRM	CABLE GUIDE RAIL METAL POSTS	CI	CAST IRON
CGRW	CABLE GUIDE RAIL WOOD POSTS	DI	DUCTILE IRON
TGR	TIMBER GUIDE RAIL	H.P.	HIGH PRESSURE
<u>FENCES/WALLS</u>		LP.	LOW PRESSURE
CLF	CHAIN LINK FENCE	PLA	PLASTIC
PICK.FENCE	PICKET FENCE	PVC	POLYVINYL CHLORIDE
RAIL FENCE	WOOD RAIL FENCE	RCP	REINFORCED CONCRETE PIPE
STOCK.FENCE	STOCKADE FENCE	CMP	CORRUGATED METAL PIPE
WIRE FENCE	WIRE FENCE	WRP	WRAPPED PIPE
RET.WALL	RETAINING WALL	600*	600 PSI
<u>MONUMENTATION</u>		CWD	CREOSOTE WOOD DUCT
CHD	CONN.HIGHWAY DEPT.MON.	MTD	MULTI TILED DUCTS
DH	DRILL HOLE	STD	SINGLE TILED DUCTS
I.PIN	IRON PIN	F	FIBERGLASS
I.PIPE	IRON PIPE	P	PLASTIC
MAG.NAIL	MAGNETIC NAIL	I	IRON
MON.	MONUMENT	W	WOOD
PK NAIL	*PK* NAIL	HWF	
SPIKE	SPIKE	TH	TEST HOLE
<u>SURFACE/WALL/CURB MATERIALS</u>		<u>STRUCTURES</u>	
BIT.	BITUMINOUS	*C* CB	CURBED CATCH BASIN
BOL.	BOLLARD	*C-L* CB	CURBLESS CATCH BASIN
CONC.	CONCRETE	MH	MANHOLE
GRAN.	GRANITE	SAN.	SANITARY
GRAV.	GRAVEL	STM.	STORM
B.C.L.C.	BITUMINOUS CONCRETE LIP CURB	TF	TOP OF FRAME
<u>UTILITY - WATER</u>		INV.	INVERT
WG	WATER GATE (OR CURB BOX)	BTM	BOTTOM
WM	WATER METER	N/A	NOT AVAILABLE
<u>TRAFFIC</u>		MISC.	
LOOP DET.	LOOP DETECTOR	(ABAN)	ABANDONED
<u>UTILITY - COMMUNICATIONS AND ELECTRIC</u>		(MAP)	COMPILED FROM EXISTING MAPPING
ELEC.MH	ELECTRIC MANHOLE	UG	UNDERGROUND
TEL.MH	TELEPHONE/COMMUNICATIONS MANHOLE	F.O.	FIBER OPTIC
TRANS.	TRANSFORMER		
UI	UNITED ILLUMINATING		
SNET	SOUTHERN NEW ENGLAND TELEPHONE		
CL&P	CONNECTICUT LIGHT AND POWER		

Edge Of Road	Easement Line
Concrete Pavement	Edge of Water
Dirt Road	Stone Wall
B.C.L.C.	Transmission Tower
Curb (Type As Labeled)	Riprap
Guide Rail	Hedge Row
Concrete Median Barrier	Tree Line
Railroad Tracks	Shrub
Fence	All Trees
Storm	Hand Hole
Sanitary	Pedestrian Signal
Gas Main	Span Pole
Water Main	Mast Arm
Underground Electric	Traffic Controller
Telephone Duct Bank	Traffic Signal
Underground Tele. Conduit	Sign
Overhead Wires	2-Post Sign
Retaining Wall	Double-Faced Sign
Highway Line	Billboard
Street Line	Utility Pole
Property Line	Utility Pole With Light
Lot Line Of Common Ownership	General Purpose Lamp
Town Line	Light Standard
DUCT BANK	Guy Wire
Water /RR Crossing	Guy Pole
Demolition	Water Meter
Approx.Limits of Thermally Approved Unbound Aggregate Backfill	Hydrant
	Type *C-L* Catch Basin
	Type *C* Catch Basin
	Manhole
	Benchmark
	Control Point
	Monuments
	Pin,Pipe,Drillhole
	Marsh
	Wetlands Boundary
	Fiber Optic Handhole
	Splice Vault
	Test Hole
	Temperature Monitor Station

1. THE UTILITIES AND NATURAL FEATURES SHOWN HEREON ARE BASED ON FIELD SURVEYS, AERIAL PHOTOGRAPHY AND RECORD DOCUMENTS. OTHER FACILITIES MAY EXIST NOT DISCOVERED THROUGH THE RECORD CHECK. THE CONTRACTOR SHALL VERIFY THE EXACT LOCATION, BOTH HORIZONTAL AND VERTICAL, OF ALL UTILITIES THROUGH THE APPROPRIATE UTILITY COMPANIES. CALL BEFORE YOU DIG.
2. ALL VERTICAL RADII ARE MINIMUM 400' RADIUS ON CONCAVE SIDE OF CURVES UNLESS OTHERWISE NOTED.
3. DUCT BANK SHALL MAINTAIN MINIMUM COVER DEPTH OF 2'-6" UNLESS OTHERWISE SHOWN ON DRAWINGS. MAINTAIN 2'-0" VERTICAL CLEARANCE OVER OR UNDER EXISTING UTILITIES UNLESS OTHERWISE SHOWN ON DRAWINGS.
4. ALL AREAS DISTURBED BY CONSTRUCTION SHALL BE RETURNED TO THE ORIGINAL CONDITIONS AS DETERMINED BY NORTHEAST UTILITIES.
5. COORDINATES AND STATIONING INDICATED ARE AT CENTERLINE OF DUCT BANK.
6. SEE INDEX KEY MAPS FOR THE DESIGNATION BETWEEN MUNICIPAL ROADS AND STATE ROADS.
7. TREES AND SHRUBS SHALL BE REMOVED AND REPLACED WITH SIMILAR TYPES AND SIZES TYPICAL OF GENERAL CONSUMER NURSERY STOCK, PROVIDED THAT NO REPLACEMENT TREE SHALL EXCEED TWELVE (12) FEET IN HEIGHT, NOR SHALL ANY REPLACEMENT SHRUB EXCEED A THREE (3) GALLON POT AND PROVIDED THAT NOTHING SHALL BE PLANTED WITHIN FIFTEEN (15) FEET OF AN INSTALLED VAULT OR WITHIN TEN (10) FEET OF AN INSTALLED CABLE DUCT BANK.
8. COORDINATES ARE BASED ON THE CONNECTICUT STATE PLANE COORDINATE SYSTEM. (NAD 83)
9. VERTICAL DATUM IS BASED ON NAVD 88.
10. SILT FENCE SHALL BE USED ALONG THE DOWN SLOPE SIDE OF THE CONSTRUCTION AREA WHERE THERE IS THE POTENTIAL FOR STORM WATER RUNOFF. THIS INCLUDES ANY PVIOUS AREAS ALONG THE ROUTE. INLET PROTECTION SHALL BE USED IN ROADWAYS WHERE STORM DRAINS ARE PRESENT AND POTENTIAL FOR STORM WATER RUNOFF EXISTS.
11. TEMPORARY AND PERMANENT EASEMENTS WILL BE ACQUIRED FOR INSTALLATION OF THE DUCT BANK AND VAULTS ALONG PRIVATE PROPERTY. A TYPICAL VAULT LOCATION INSTALLED ALONG PRIVATE PROPERTY REQUIRES A PERMANENT EASEMENT OF APPROXIMATELY 10,000 SF AND A TEMPORARY EASEMENT OF APPROXIMATELY 6,500 SF.
12. VAULT AND DUCT BANK LOCATIONS ARE SUBJECT TO ADJUSTMENT DUE TO UNFORESEEN CONDITIONS.
13. NORTHING AND EASTING DESIGNATIONS FOR SPLICE VAULT LOCATIONS ARE REFERENCED TO CENTER OF SPLICE VAULT.



ONE CALL SYSTEMS  
1-800-922-4455  
CALL BEFORE YOU DIG.....IT'S THE LAW!  
48 HOUR NOTICE REQUIRED

DOCKET No. 272

ISSUED FOR  
CONSTRUCTION

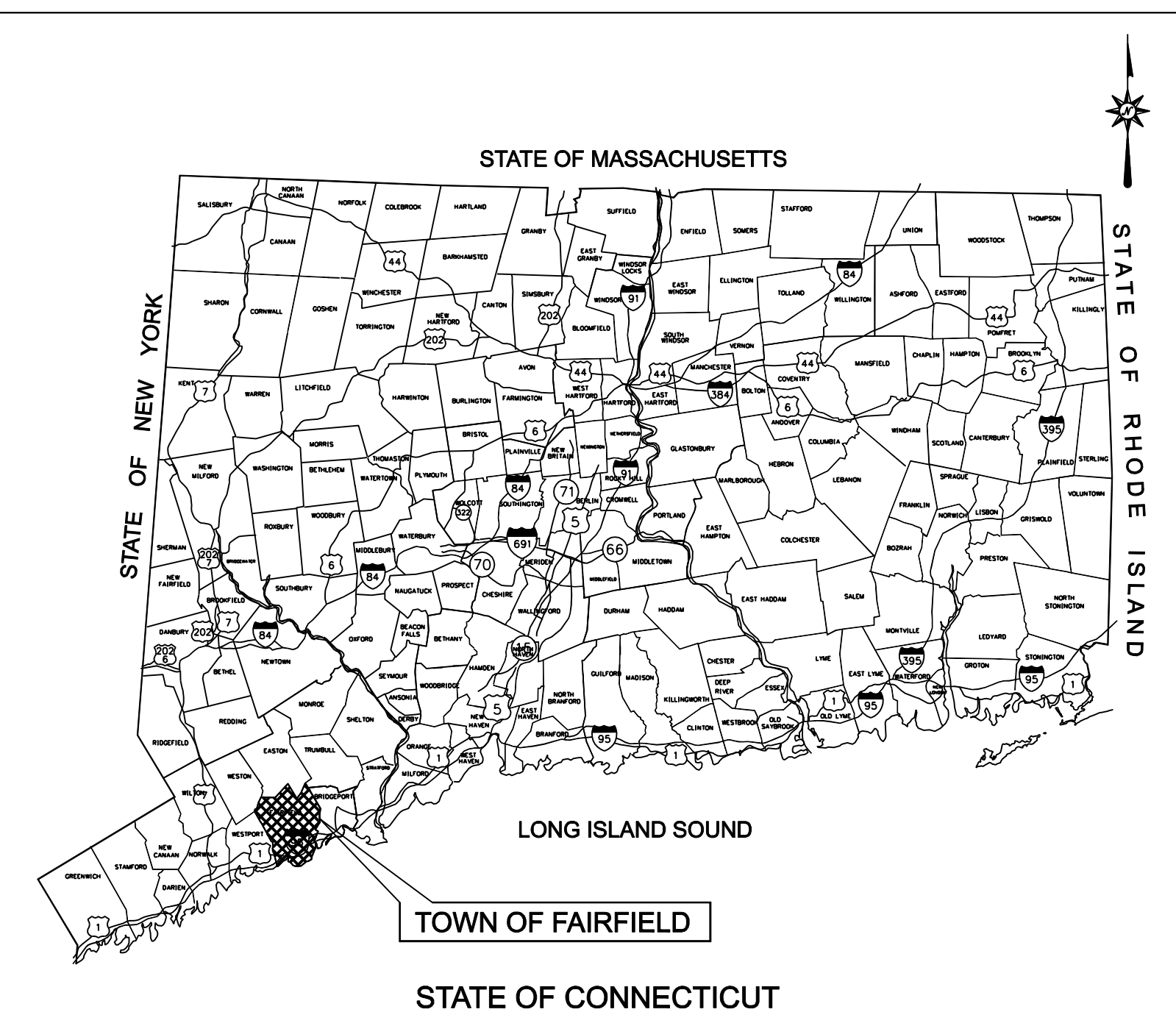


date 08/15/05 detailed L. ROWSE  
designed C. COURTRIGHT checked S. NEWLAND

1	5/10/07	ISSUED CSC REVISED	CTC
no.	date	revisions	by chk

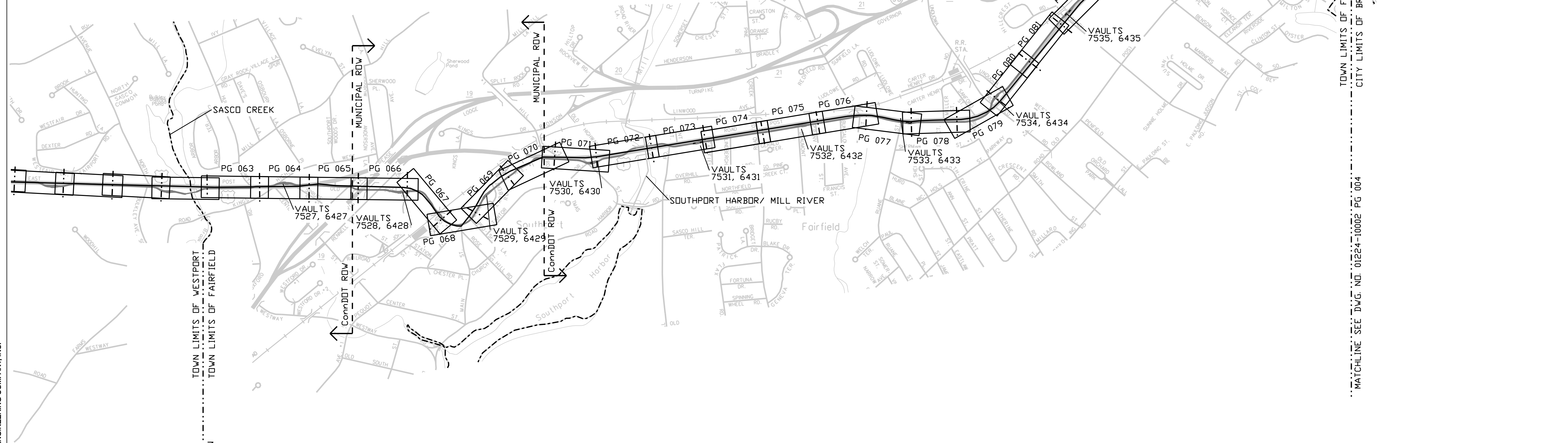
MF	NO.	DATE	REVISIONS	BY	CHK	APP	APP
----	-----	------	-----------	----	-----	-----	-----

NORTHEAST UTILITIES SERVICE CO.			
FOR THE CONNECTICUT LIGHT & POWER COMPANY			
TITLE MIDDLETOWN-NORWALK 345KV TRANSMISSION PROJECT			
NORWALK SS TO SINGER SS GENERAL NOTES AND LEGEND			
BY SEN-BMCD	CHKD	APP	APP
DATE 8-15-05	DATE	DATE	DATE
SCALE AS NOTED	D	DWG. NO. 01224-00001	PG 004



**LOCATION MAP**  
N.T.S.

**TOWN OF FAIRFIELD**  
NOT TO SCALE



MATCHLINE SEE DWG. NO. 01224-10002 PG 002  
UNDER SEPARATE SUBMISSION

MATCHLINE SEE DWG. NO. 01224-10002 PG 004

COPYRIGHT © 2007 BURNS & MCDONNELL ENGINEERING COMPANY, INC.



**ISSUED FOR CONSTRUCTION**

DOCKET No. 272

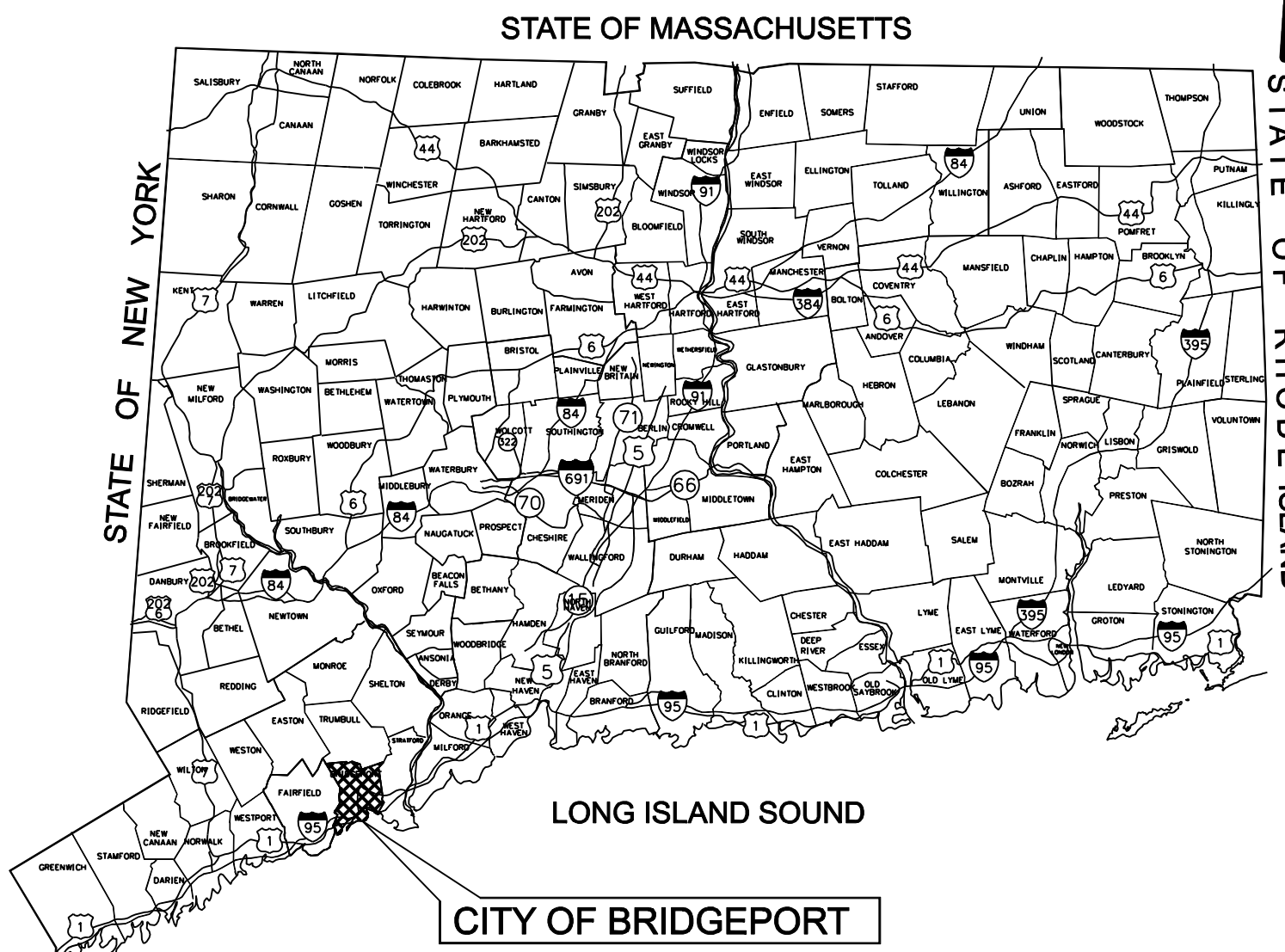
no.	date	revisions	by	chk
1	5/10/07	ISSUED CSC REVISED	CTC	

**Burns & McDonnell**  
SINCE 1898

date 08/15/05  
designed C. COURTRIGHT  
detailed L. ROWSE  
checked S. NEWLAND

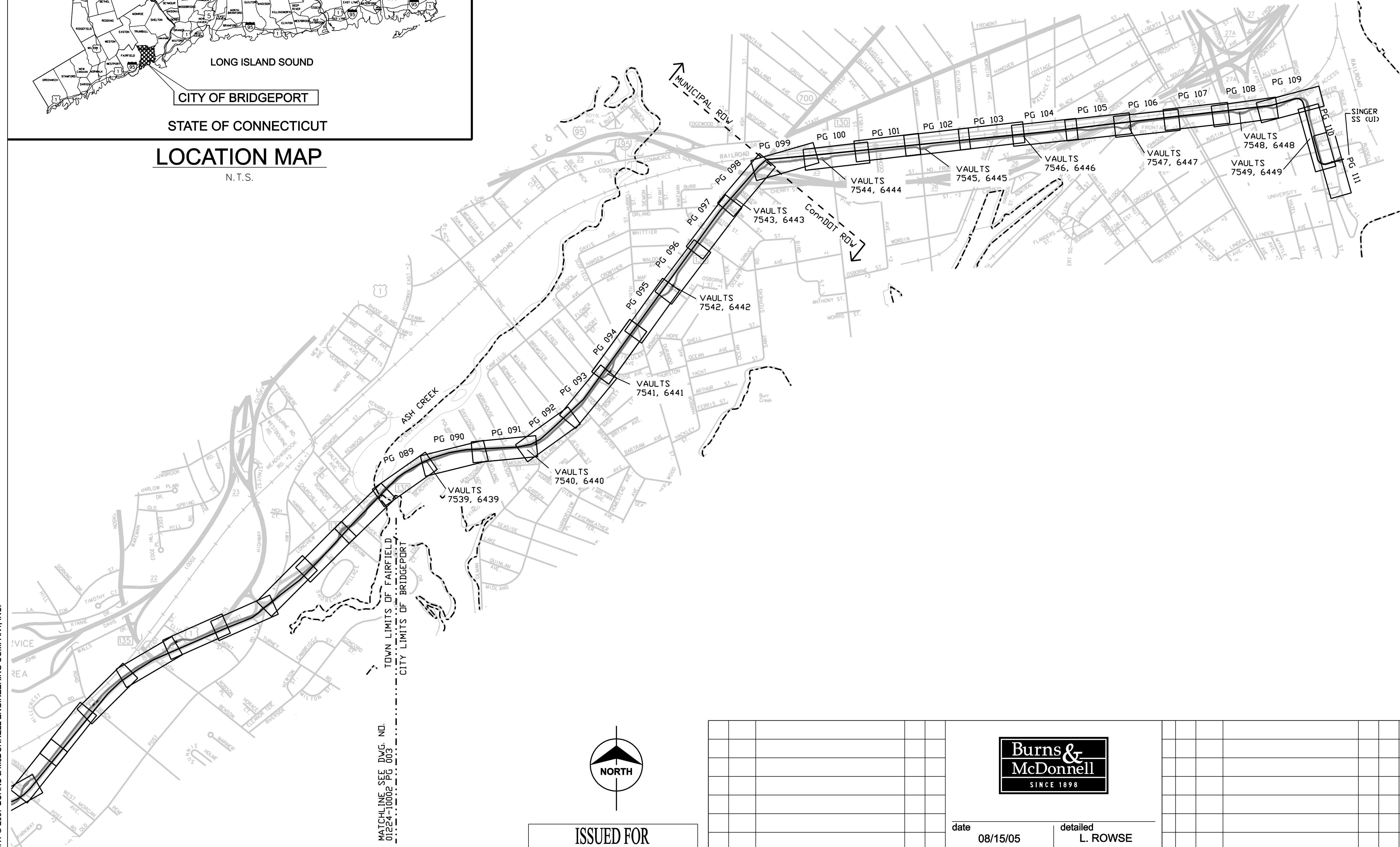
MF	NO.	DATE	REVISIONS	BY	CHK	APP	APP

<b>NORTHEAST UTILITIES SERVICE CO.</b>			
FOR THE CONNECTICUT LIGHT & POWER COMPANY			
TITLE MIDDLETOWN-NORWALK 345KV TRANSMISSION PROJECT			
TOWN OF FAIRFIELD INDEX KEY MAP			
BY SEN-BMCD	CHKD	APP	APP
DATE 8-15-05	DATE	DATE	DATE
SCALE AS NOTED	D	DWG. NO. 01224-10002 PG 003	



**LOCATION MAP**  
N.T.S.

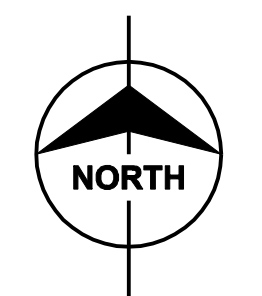
CITY OF BRIDGEPORT  
NOT TO SCALE



COPYRIGHT © 2007 BURNS & MCDONNELL ENGINEERING COMPANY, INC.

MATCHLINE SEE DWG. NO. 01224-10002 PG 003

DOCKET No. 272



**ISSUED FOR  
CONSTRUCTION**

no.	date	revisions	by	chk
1	5/10/07	ISSUED CSC REVISED	CTC	



date **08/15/05** detailed **L. ROWSE**  
 designed **C. COURTRIGHT** checked **S. NEWLAND**

MF	NO.	DATE	REVISIONS	BY	CHK	APP	APP

NORTHEAST UTILITIES SERVICE CO.			
FOR THE CONNECTICUT LIGHT & POWER COMPANY			
TITLE MIDDLETOWN-NORWALK 345KV TRANSMISSION PROJECT			
CITY OF BRIDGEPORT INDEX KEY MAP			
BY SEN-BMCD	CHKD	APP	APP
DATE 8-15-05	DATE	DATE	DATE
SCALE AS NOTED		DWG. NO. 01224-10002 PG 004	

Table with 9 columns: CURVE NO., RADIUS, CURVE LENGTH, TANGENT LENGTH, DEFLECTION ANGLE, POINT OF INTERSECTION, POINT OF CURVATURE, POINT OF TANGENCY, SHEET REFERENCE. Rows include data for curves PI-F-01 through PI-F-37.

Table with 9 columns: CURVE NO., RADIUS, CURVE LENGTH, TANGENT LENGTH, DEFLECTION ANGLE, POINT OF INTERSECTION, POINT OF CURVATURE, POINT OF TANGENCY, SHEET REFERENCE. Rows include data for curves PI-F-38 through PI-F-74.

Table with 9 columns: CURVE NO., RADIUS, CURVE LENGTH, TANGENT LENGTH, DEFLECTION ANGLE, POINT OF INTERSECTION, POINT OF CURVATURE, POINT OF TANGENCY, SHEET REFERENCE. Rows include data for curves PI-F-75 through PI-F-107.

\* PI SUBMITTED WITH UNDERGROUND WATERCOURSE AND RAILROAD CROSSINGS DEVELOPMENT AND MANAGEMENT DRAWINGS

ISSUED FOR CONSTRUCTION



date 6/15/06 detailed L. ROWSE designed C. COURTRIGHT checked S. NEWLAND

NORTHEAST UTILITIES SERVICE CO.

FOR THE CONNECTICUT LIGHT & POWER COMPANY

TITLE MIDDLETOWN-NORWALK 345KV TRANSMISSION PROJECT

TOWN OF FAIRFIELD ROUTE DATA TABLES

Table with columns: BY, CHKD, APP, DATE, SCALE, DWG. NO. Contains project identification and drawing information.

Table with columns: no., date, revisions, by, chk. Contains a revision log entry for 5/10/07.

Table with columns: MF, NO., DATE, REVISIONS, BY, CHK, APP, APP. Contains drawing revision history.



Table with 9 columns: CURVE NO., RADIUS, CURVE LENGTH, TANGENT LENGTH, DEFLECTION ANGLE, POINT OF CURVATURE, POINT OF TANGENCY, SHEET REFERENCE. Contains data for curves PI-B-01 to PI-B-37.

Table with 9 columns: CURVE NO., RADIUS, CURVE LENGTH, TANGENT LENGTH, DEFLECTION ANGLE, POINT OF INTERSECTION, POINT OF CURVATURE, POINT OF TANGENCY, SHEET REFERENCE. Contains data for curves PI-B-38 to PI-B-74.

Table with 9 columns: CURVE NO., RADIUS, CURVE LENGTH, TANGENT LENGTH, DEFLECTION ANGLE, POINT OF INTERSECTION, POINT OF CURVATURE, POINT OF TANGENCY, SHEET REFERENCE. Contains data for curves PI-B-75 to PI-B-109.

ISSUED FOR CONSTRUCTION



Project information block including fields for date (06/15/06), detailed by (L. ROWSE), designed by (C. COURTRIGHT), checked by (S. NEWLAND), and revision table.

NORTHEAST UTILITIES SERVICE CO. FOR THE CONNECTICUT LIGHT & POWER COMPANY MIDDLETOWN-NORWALK 345KV TRANSMISSION PROJECT CITY OF BRIDGEPORT ROUTE DATA TABLES

Project information block including fields for title, scale, date, sheet number (D), and drawing number (01224-10002 PG 011).



CURVE DATA TABLE								
CURVE NO.	RADIUS	CURVE LENGTH	TANGENT LENGTH	DEFLECTION ANGLE	POINT OF INTERSECTION	POINT OF CURVATURE	POINT OF TANGENCY	SHEET REFERENCE
PI-B7539-01	100'	79.02'	41.70'	45°16'31.47"	N 617,622.1783 E 866,421.1907	N 617,590.5129 E 866,394.0529	N 617,625.1799 E 866,462.7857	10001 PG 089
PI-B7539-02	100'	27.80'	13.99'	15°55'50.92"	N 617,626.1870 E 866,476.7419	N 617,625.1799 E 866,462.7857	N 617,630.9861 E 866,489.8857	10001 PG 089
PI-B7539-03	202'	50.91'	25.59'	14°26'21.73"	N 617,661.5104 E 866,573.4858	N 617,652.7340 E 866,549.4489	N 617,664.0159 E 866,598.9519	10001 PG 090
PI-B6440-01	200'	9.37'	4.69'	2°41'05.92"	N 617,856.0619 E 867,939.3997	N 617,855.5791 E 867,934.7376	N 617,856.7626 E 867,944.0341	10001 PG 091
PI-B6440-02	100'	25.48'	12.81'	14°36'02.41"	N 617,873.6952 E 868,056.0228	N 617,871.7799 E 868,043.3559	N 617,878.7416 E 868,067.7978	10001 PG 092
PI-B6440-03	98'	10.33'	5.17'	6°02'24.93"	N 617,914.2841 E 868,150.7302	N 617,912.2473 E 868,145.9778	N 617,915.8094 E 868,155.6706	10001 PG 092
PI-B6440-04	200'	38.68'	19.40'	11°04'50.47"	N 617,921.5327 E 868,174.2071	N 617,915.8094 E 868,155.6706	N 617,930.7118 E 868,191.2981	10001 PG 092
PI-B6442-01	150'	93.47'	48.31'	35°42'10.30"	N 620,132.9988 E 870,089.7298	N 620,110.2870 E 870,047.0934	N 620,176.3238 E 870,111.0988	10001 PG 096
PI-B6442-02	200'	33.50'	16.79'	9°35'53.59"	N 620,191.3831 E 870,118.5263	N 620,176.3238 E 870,111.0988	N 620,204.9930 E 870,128.3609	10001 PG 096
PI-B6442-03	200'	47.41'	23.82'	13°34'54.36"	N 620,278.0127 E 870,181.1248	N 620,258.7088 E 870,167.1758	N 620,300.0525 E 870,190.1505	10001 PG 096
PI-B7543-01	400'	19.78'	9.89'	2°50'01.91"	N 621,439.9555 E 870,998.2011	N 621,446.7088 E 871,005.4319	N 621,432.8529 E 870,991.3130	10001 PG 098
PI-B7543-02	400'	49.96'	25.01'	7°09'22.26"	N 621,463.7813 E 871,023.7116	N 621,446.7088 E 871,005.4319	N 621,482.9980 E 871,039.7220	10001 PG 098
PI-B6444-01	102'	31.31'	15.78'	17°35'16.09"	N 622,107.3614 E 872,315.3334	N 622,110.4689 E 872,299.8631	N 622,109.0739 E 872,331.0196	10001 PG 100
PI-B6444-02	102'	40.87'	20.72'	22°57'35.86"	N 622,123.5296 E 872,463.4367	N 622,121.2815 E 872,442.8440	N 622,133.6325 E 872,481.5210	10001 PG 100
PI-B6444-03	150'	25.60'	12.83'	9°46'36.20"	N 622,139.8893 E 872,492.7206	N 622,133.6325 E 872,481.5210	N 622,144.1533 E 872,504.8201	10001 PG 100
PI-B6445-01	54'	50.66'	27.37'	53°45'05.14"	N 622,252.0434 E 873,797.6939	N 622,268.7227 E 873,775.9972	N 622,259.6786 E 873,823.9742	10001 PG 102
PI-B6445-02	400'	57.27'	28.68'	8°12'09.78"	N 622,301.8982 E 873,696.2934	N 622,293.8961 E 873,941.7504	N 622,305.8887 E 873,997.6963	10001 PG 102
PI-B7546-01	200'	15.90'	7.95'	4°33'17.82"	N 622,443.3149 E 875,222.5773	N 622,442.4220 E 875,214.6735	N 622,443.5773 E 875,230.5270	10001 PG 103
PI-B7546-02	400'	30.64'	15.33'	4°23'21.47"	N 622,444.0831 E 875,245.8477	N 622,443.5773 E 875,230.5270	N 622,445.7599 E 875,261.0848	10001 PG 103
PI-B7546-03	202'	20.18'	10.10'	5°43'20.75"	N 622,455.2367 E 875,347.1985	N 622,454.1323 E 875,337.1633	N 622,455.3350 E 875,357.2938	10001 PG 104
PI-B7546-04	400'	48.71'	24.39'	6°58'37.68"	N 622,455.5723 E 875,381.6776	N 622,455.3350 E 875,357.2938	N 622,458.7699 E 875,405.8520	10001 PG 104
PI-B6447-01	150'	138.05'	74.35'	52°43'54.62"	N 622,537.7549 E 876,825.5759	N 622,566.2380 E 876,756.8987	N 622,575.1612 E 876,889.8302	10001 PG 106
PI-B6447-02	200'	81.11'	41.12'	23°14'12.21"	N 622,648.9177 E 877,016.5251	N 622,628.2292 E 876,980.9876	N 622,653.9073 E 877,057.3422	10001 PG 106
PI-B6448-01	75'	32.85'	16.69'	25°05'45.11"	N 622,786.3238 E 878,478.7467	N 622,791.7215 E 878,462.9505	N 622,788.1354 E 878,495.3410	10001 PG 108
PI-B6448-02	202'	78.24'	39.62'	22°11'29.48"	N 622,801.1597 E 878,614.6464	N 622,796.8605 E 878,575.2651	N 622,820.0149 E 878,649.4868	10001 PG 108
PI-B7549-01	70'	98.18'	59.11'	80°21'41.87"	N 623,010.3699 E 879,476.7689	N 623,004.4889 E 879,417.9477	N 622,953.3637 E 879,492.4152	10001 PG 109
PI-B7549-02	200'	17.43'	8.72'	4°59'37.01"	N 622,873.1212 E 879,514.4392	N 622,881.5312 E 879,512.1309	N 622,864.5422 E 879,516.0067	10001 PG 110
PI-B7549-03	200'	17.34'	8.68'	4°58'04.96"	N 622,856.0072 E 879,517.5661	N 622,864.5422 E 879,516.0067	N 622,847.6393 E 879,519.8588	10001 PG 110
PI-SS-1	65'	80.76'	46.53'	71°11'28.31"	N 622,093.9759 E 879,977.4277	N 622,080.9845 E 879,932.7504	N 622,055.8729 E 880,004.1299	10001 PG 111

VAULT LOCATION TABLE	
VAULT #	CENTER OF VAULT
6439	N 617,639.0376 E 866,485.6963
7539	N 617,643.8700 E 866,522.2564
6440	N 617,865.3758 E 868,007.6151
7540	N 617,897.5413 E 868,129.4339
6441	N 618,988.2543 E 869,180.2747
7541	N 618,967.9307 E 869,223.2016
6442	N 620,237.0493 E 870,138.0745
7542	N 620,191.3265 E 870,129.5892
6443	N 621,536.3928 E 871,072.4937
7543	N 621,558.9304 E 871,101.6837
6444	N 622,110.9014 E 872,356.9745
7544	N 622,106.8555 E 872,393.6300
6445	N 622,264.1059 E 873,842.7969
7545	N 622,266.3481 E 873,879.1863
6446	N 622,457.4873 E 875,285.3739
7546	N 622,445.5593 E 875,286.6866
6447	N 622,587.0776 E 876,912.2872
7547	N 622,576.7070 E 876,918.3246
6448	N 622,789.4156 E 878,516.2825
7548	N 622,785.3697 E 878,552.9380
6449	N 622,881.9808 E 879,518.1912
7549	N 622,915.1988 E 879,503.8923

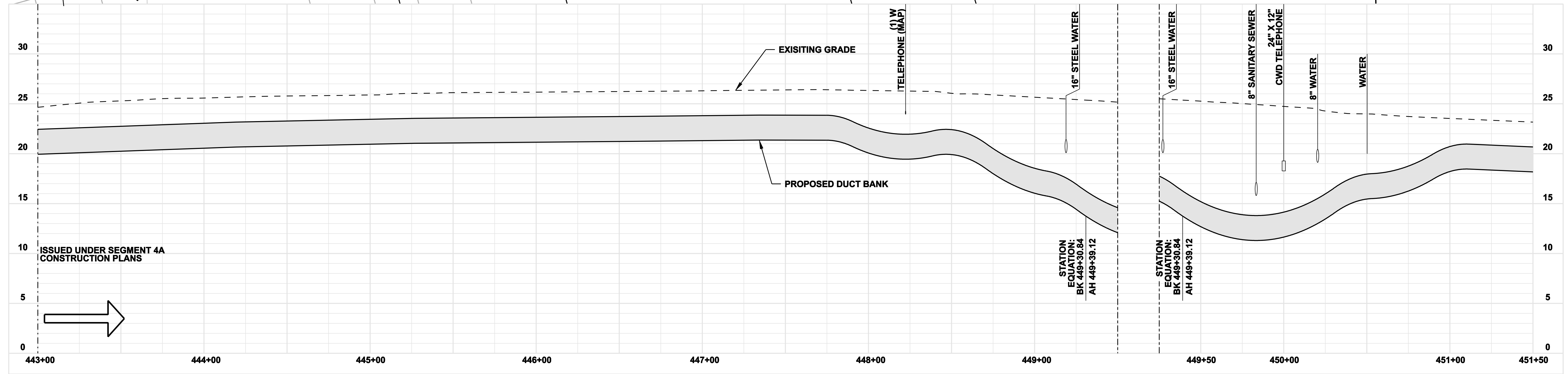
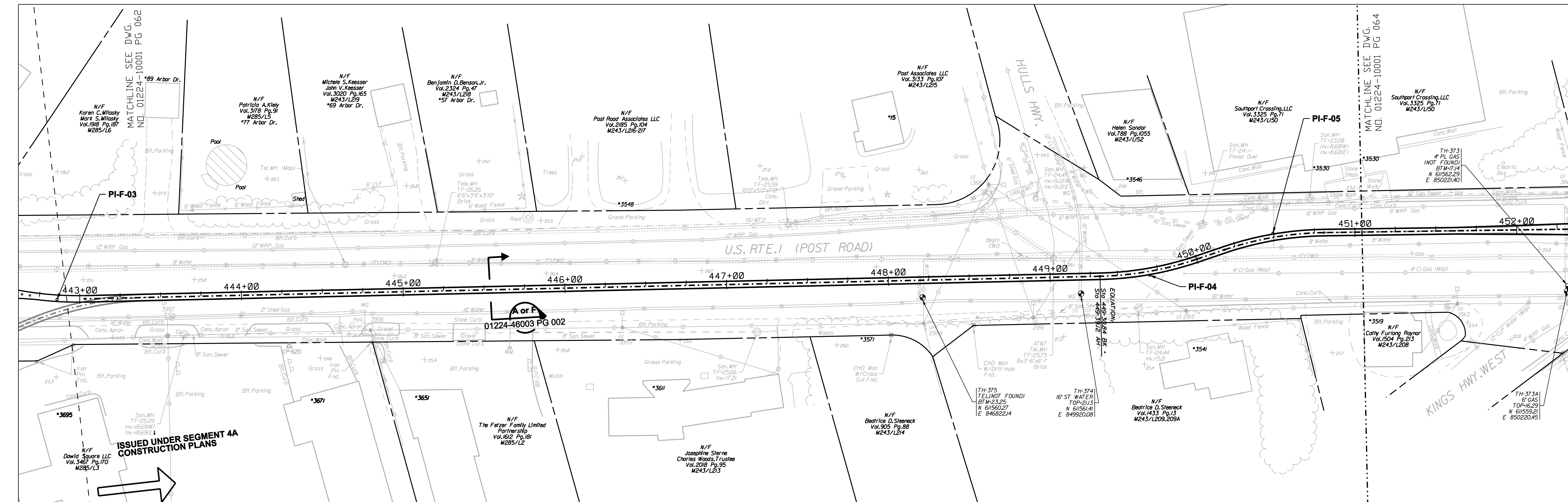
HANDHOLE LOCATION TABLE	
HANDHOLE #	CENTER OF HANDHOLE
6439	N 617,646.2646 E 866,478.9163
7539	N 617,643.8111 E 866,542.5048
6440	N 617,858.0859 E 868,989.5014
7540	N 617,909.1619 E 868,145.1250
6441	N 619,007.0797 E 869,181.5404
7541	N 619,977.8348 E 869,240.2283
6442	N 620,230.3873 E 870,138.0745
7542	N 620,185.0199 E 870,134.9021
6443	N 621,526.0842 E 871,056.7463
7543	N 621,564.5656 E 871,116.7914
6444	N 622,123.0090 E 872,354.1197
7544	N 622,099.1198 E 872,396.4864
6445	N 622,271.2326 E 873,838.6541
7545	N 622,258.1054 E 873,879.4879
6446	N 622,455.0832 E 875,313.8075
7546	N 622,447.9634 E 875,258.2530
6447	N 622,601.3900 E 876,925.9403
7547	N 622,562.4475 E 876,904.6287
6448	N 622,797.1513 E 878,513.4262
7548	N 622,777.1999 E 878,551.8180
6449	N 622,865.1878 E 879,528.4990
7549	N 622,931.9918 E 879,493.5845

ISSUED FOR  
CONSTRUCTION

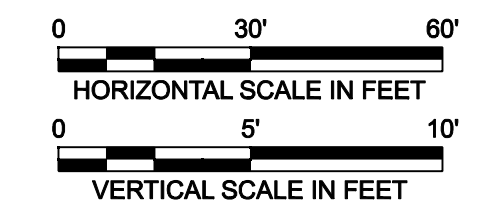
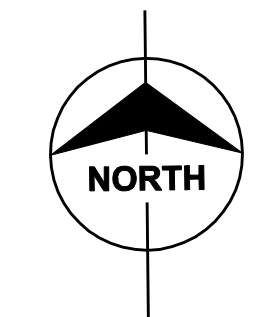
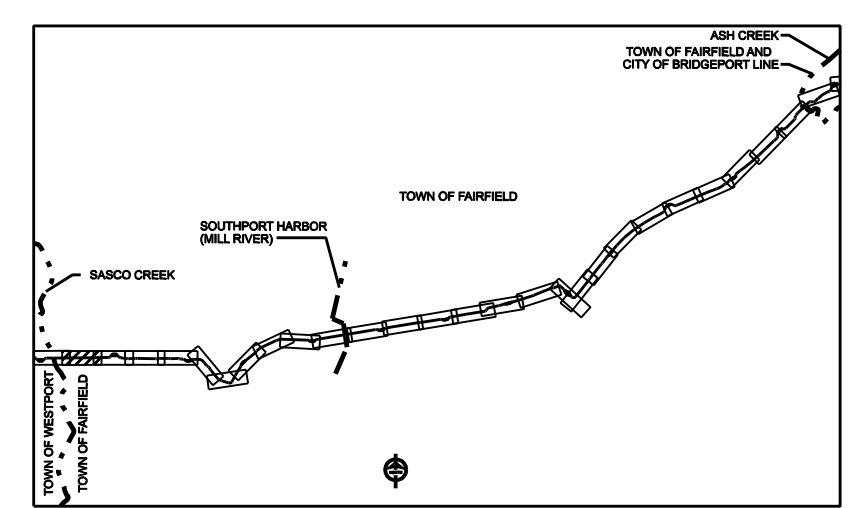


date	06/15/06	detailed	L. ROWSE
designed	C. COURTRIGHT	checked	S. NEWLAND

NORTHEAST UTILITIES SERVICE CO.												
FOR THE CONNECTICUT LIGHT & POWER COMPANY												
TITLE MIDDLETOWN-NORWALK 345KV TRANSMISSION PROJECT												
CITY OF BRIDGEPORT ROUTE DATA TABLES												
BY	SEN-BMCD	CHKD	APP	APP								
DATE	6-15-06	DATE	DATE	DATE								
SCALE	AS NOTED	D	DWG. NO.	01224-10002 PG 012								
no.	date	revisions	by	chk	MF	NO.	DATE	REVISIONS	BY	CHK	APP	APP



COPYRIGHT © 2007 BURNS & MCDONNELL ENGINEERING COMPANY, INC.



**ISSUED FOR  
CONSTRUCTION**

DOCKET No. 272

no.	date	revisions	by	chk
1	5/10/07	ISSUED CSC REVISED	CTC	

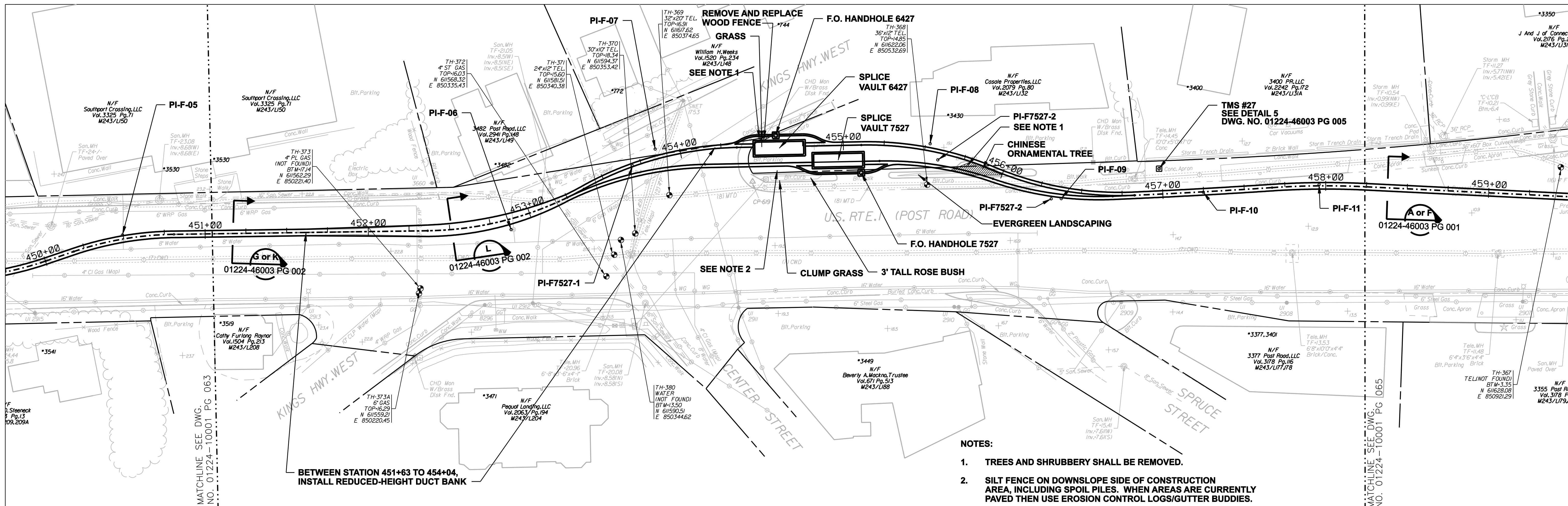


date: 08/15/05  
designed: C. COURTRIGHT  
detailed: L. ROWSE  
checked: S. NEWLAND

MF	NO.	DATE	REVISIONS	BY	CHK	APP	APP

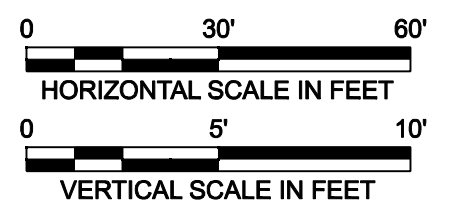
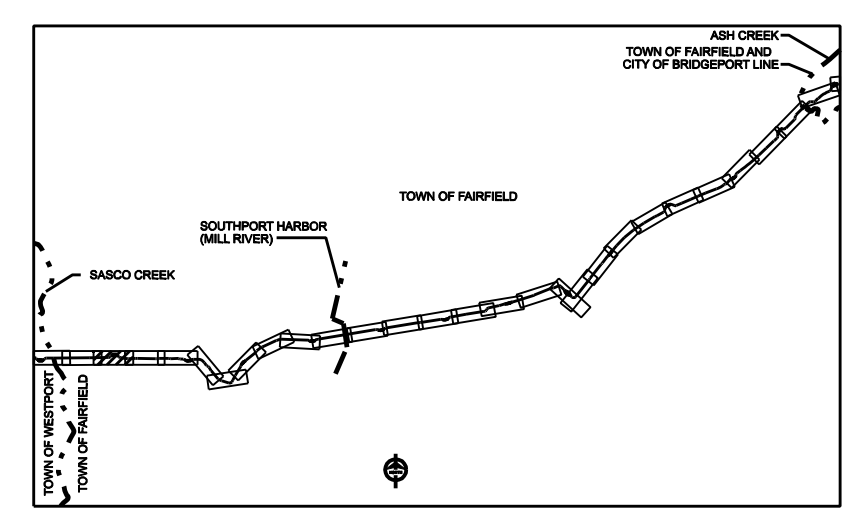
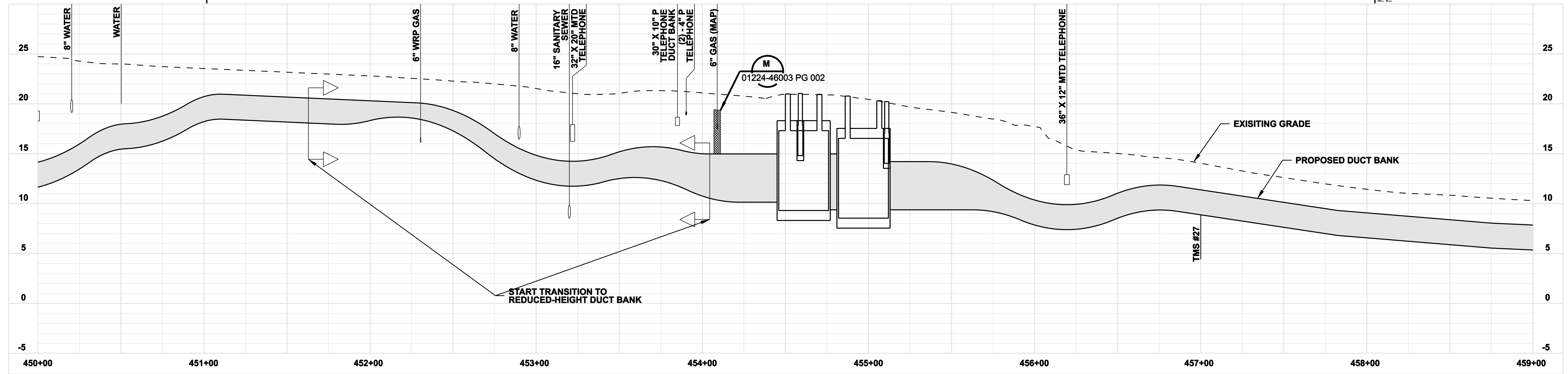
NORTHEAST UTILITIES SERVICE CO.			
FOR THE CONNECTICUT LIGHT & POWER COMPANY			
TITLE MIDDLETOWN-NORWALK 345KV TRANSMISSION PROJECT			
TOWN OF FAIRFIELD ROUTE PLAN AND PROFILE Sta. 443+00 to 451+50			
BY SEN-BMCD	CHKD	APP	APP
DATE 8-15-05	DATE	DATE	DATE
SCALE AS NOTED	DWG. NO.		
	D		01224-10001 PG 063

COPYRIGHT © 2007 BURNS & MCDONNELL ENGINEERING COMPANY, INC.



- NOTES:**
- TREES AND SHRUBBERY SHALL BE REMOVED.
  - SILT FENCE ON DOWNSLOPE SIDE OF CONSTRUCTION AREA, INCLUDING SPOIL PILES. WHEN AREAS ARE CURRENTLY PAVED THEN USE EROSION CONTROL LOGS/GUTTER BUDDIES.

BETWEEN STATION 451+63 TO 454+04,  
INSTALL REDUCED-HEIGHT DUCT BANK



**ISSUED FOR  
CONSTRUCTION**

DOCKET No. 272

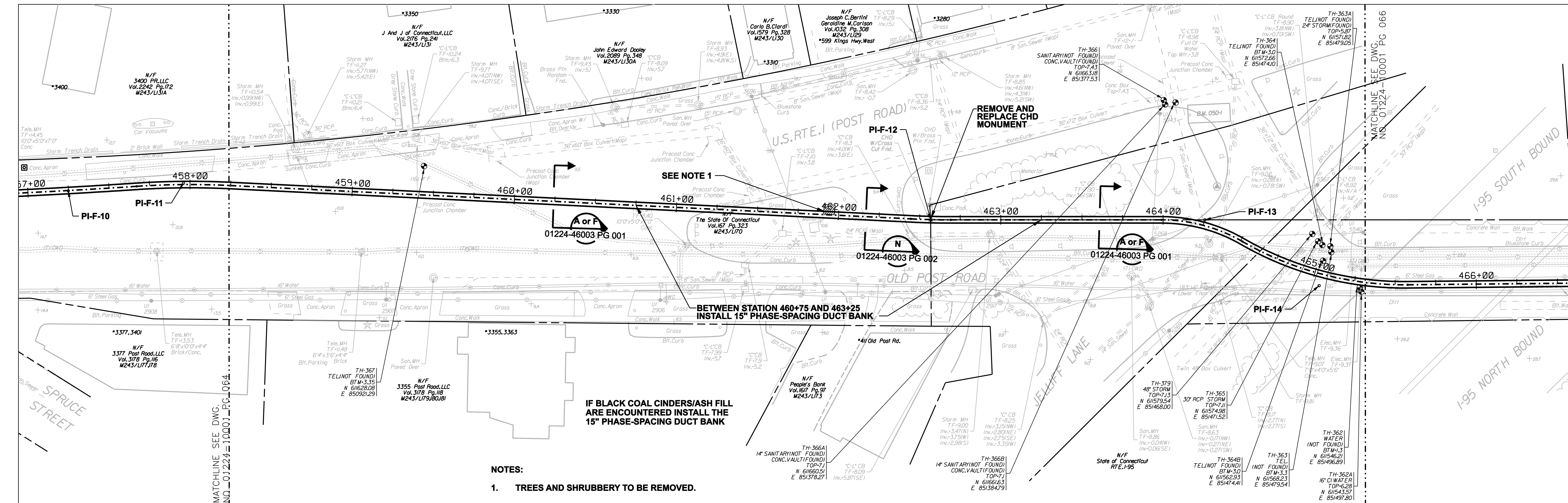


date 08/15/05  
designed C. COURTRIGHT  
detailed L. ROWSE  
checked S. NEWLAND

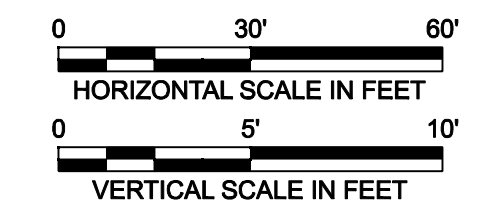
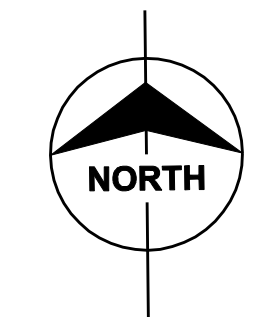
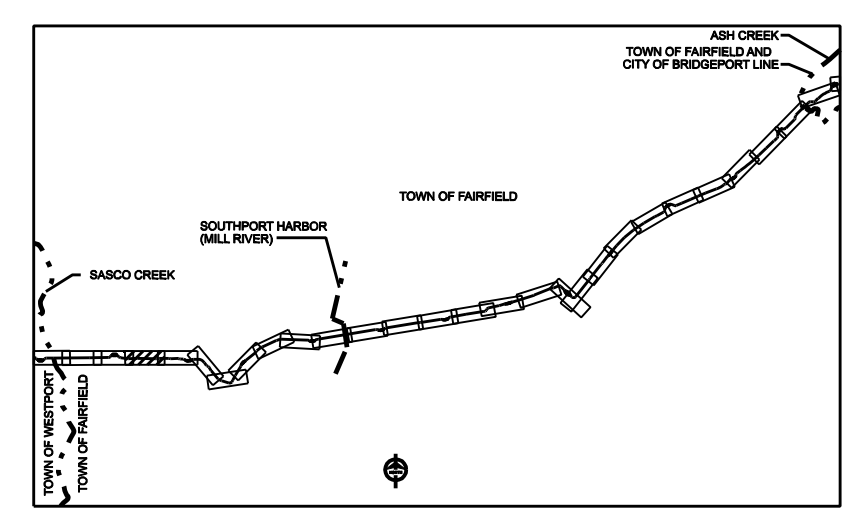
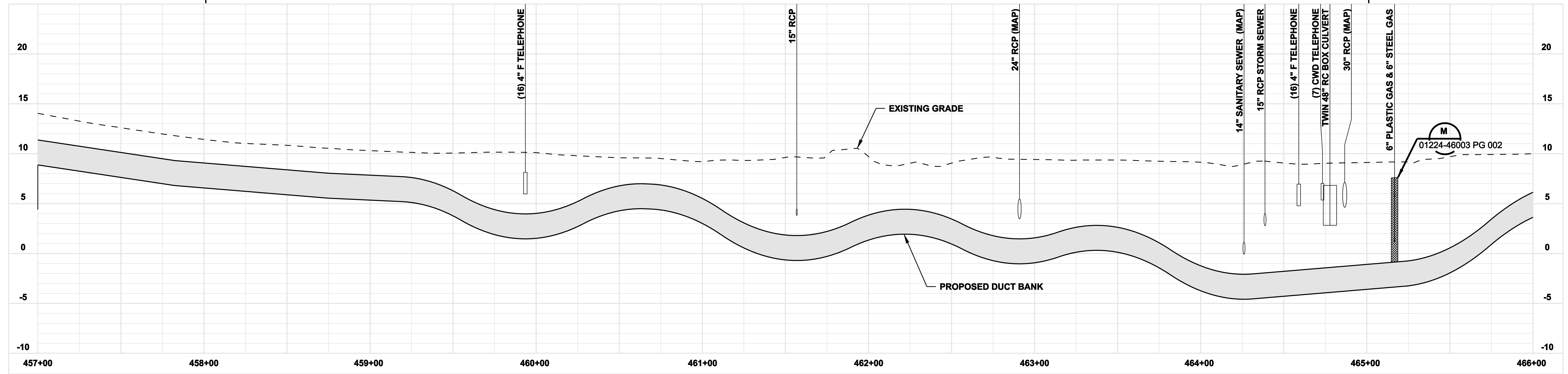
no.	date	revisions	by	chk
1	5/10/07	ISSUED CSC REVISED	CTC	

MF	NO.	DATE	REVISIONS	BY	CHK	APP	APP

NORTHEAST UTILITIES SERVICE CO.			
FOR THE CONNECTICUT LIGHT & POWER COMPANY			
TITLE MIDDLETOWN-NORWALK 345KV TRANSMISSION PROJECT			
TOWN OF FAIRFIELD ROUTE PLAN AND PROFILE Sta. 450+00 to 459+00			
BY SEN-BMCD	CHKD	APP	APP
DATE 8-15-05	DATE	DATE	DATE
SCALE AS NOTED	DWG. NO.		
	01224-10001 PG 064		



**NOTES:**  
 1. TREES AND SHRUBBERY TO BE REMOVED.



**ISSUED FOR CONSTRUCTION**

DOCKET No. 272

no.	date	revisions	by	chk
1	5/10/07	ISSUED CSC REVISED	CTC	



date: 08/15/05  
 detailed: L. ROWSE  
 designed: C. COURTRIGHT  
 checked: S. NEWLAND

MF	NO.	DATE	REVISIONS	BY	CHK	APP	APP

**NORTHEAST UTILITIES SERVICE CO.**

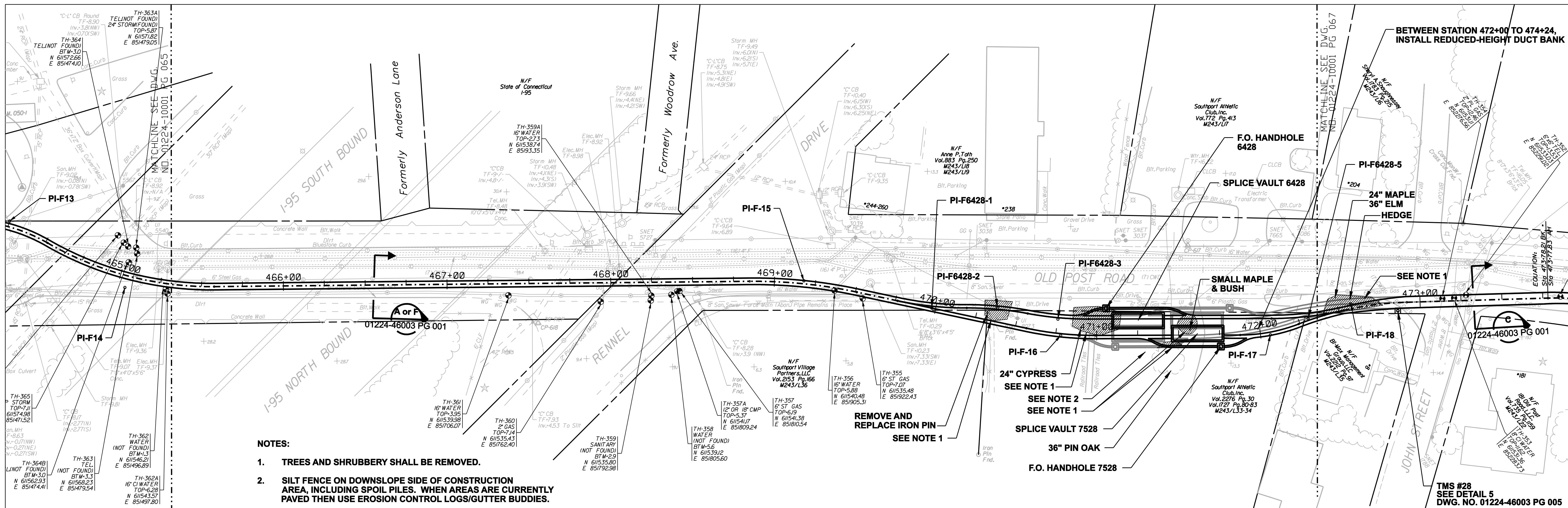
FOR THE CONNECTICUT LIGHT & POWER COMPANY

TITLE: MIDDLETOWN-NORWALK 345KV TRANSMISSION PROJECT

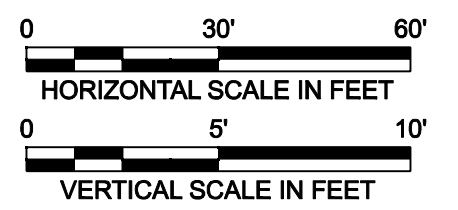
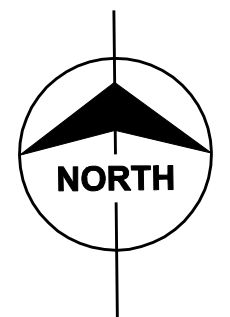
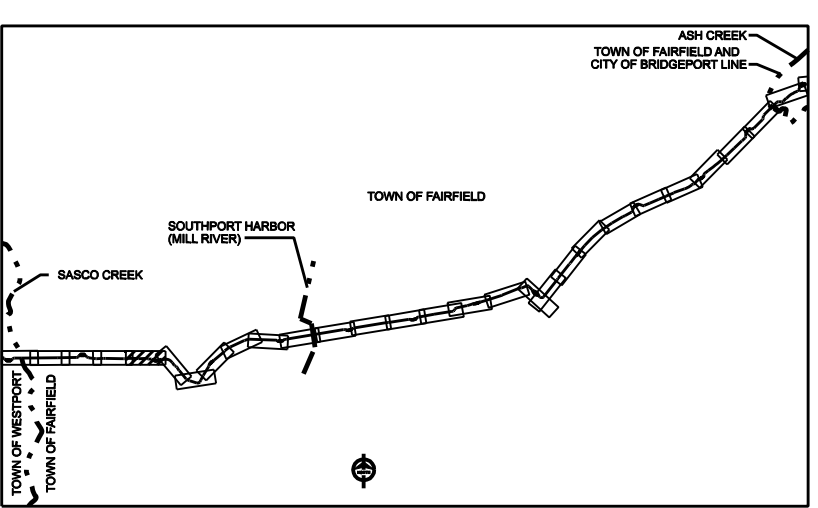
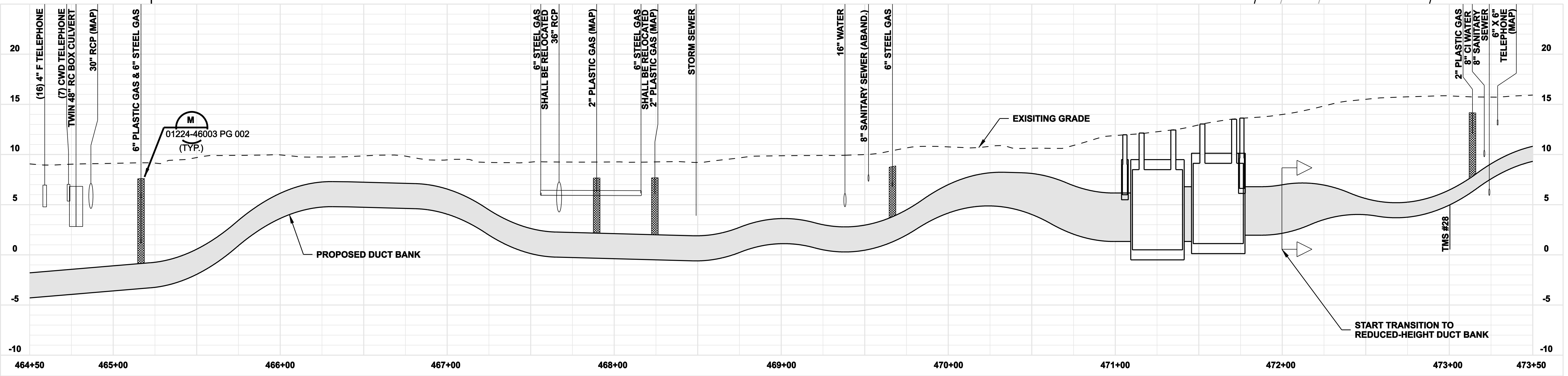
TOWN OF FAIRFIELD ROUTE  
 PLAN AND PROFILE Sta. 457+00 to 466+00

BY SEN-BMCD	CHKD	APP	APP
DATE 8-15-05	DATE	DATE	DATE
SCALE AS NOTED	DWG. NO.	01224-10001 PG 065	

COPYRIGHT © 2007 BURNS & MCDONNELL ENGINEERING COMPANY, INC.



- NOTES:**
1. TREES AND SHRUBBERY SHALL BE REMOVED.
  2. SILT FENCE ON DOWNSLOPE SIDE OF CONSTRUCTION AREA, INCLUDING SPOIL PILES. WHEN AREAS ARE CURRENTLY PAVED THEN USE EROSION CONTROL LOGS/GUTTER BUDDIES.



**ISSUED FOR CONSTRUCTION**

DOCKET No. 272



date 08/15/05 detailed L. ROWSE  
 designed C. COURTRIGHT checked S. NEWLAND

no.	date	revisions	by	chk
1	5/10/07	ISSUED CSC REVISED	CTC	

MF NO.	DATE	REVISIONS	BY	CHK	APP	APP

NORTHEAST UTILITIES SERVICE CO.			
FOR THE CONNECTICUT LIGHT & POWER COMPANY			
TITLE MIDDLETOWN-NORWALK 345KV TRANSMISSION PROJECT			
TOWN OF FAIRFIELD ROUTE			
PLAN AND PROFILE Sta. 464+50 to 473+50			
BY SEN-BMCD	CHKD	APP	APP
DATE 8-15-05	DATE	DATE	DATE
SCALE AS NOTED	D	DWG. NO. 01224-10001 PG 066	

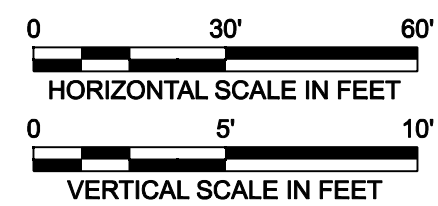
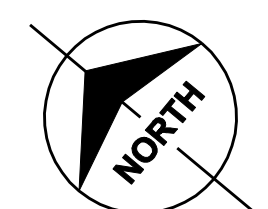
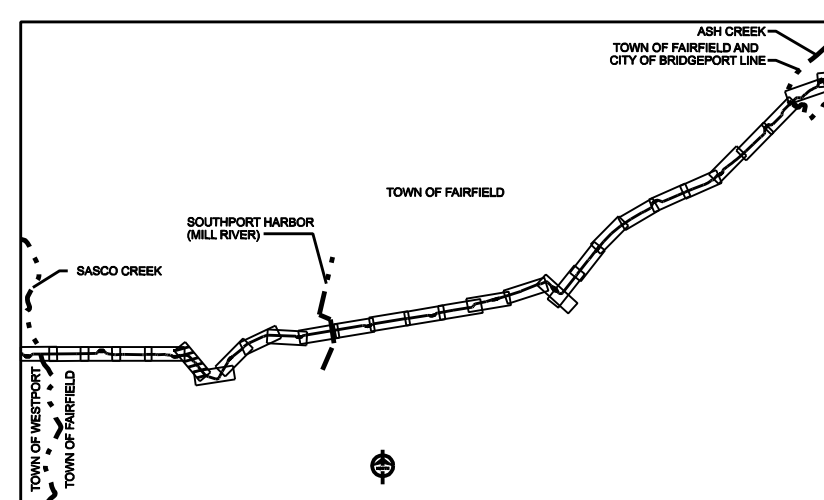
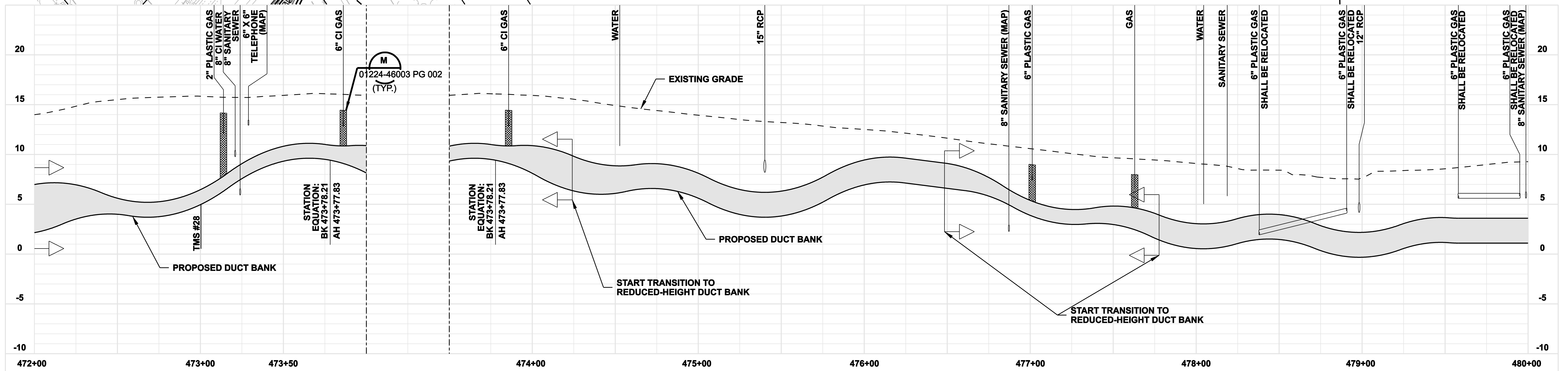
COPYRIGHT © 2007 BURNS & MCDONNELL ENGINEERING COMPANY, INC.

**BETWEEN STATION 472+00 TO 474+24,  
INSTALL REDUCED-HEIGHT DUCT BANK**

**BETWEEN STATION 476+49 TO 477+78,  
INSTALL REDUCED-HEIGHT DUCT BANK**

**NOTE:**

1. TREES AND SHRUBBERY SHALL BE REMOVED.



**ISSUED FOR  
CONSTRUCTION**

DOCKET No. 272



date: 08/15/05  
designed: C. COURTRIGHT  
detailed: L. ROWSE  
checked: S. NEWLAND

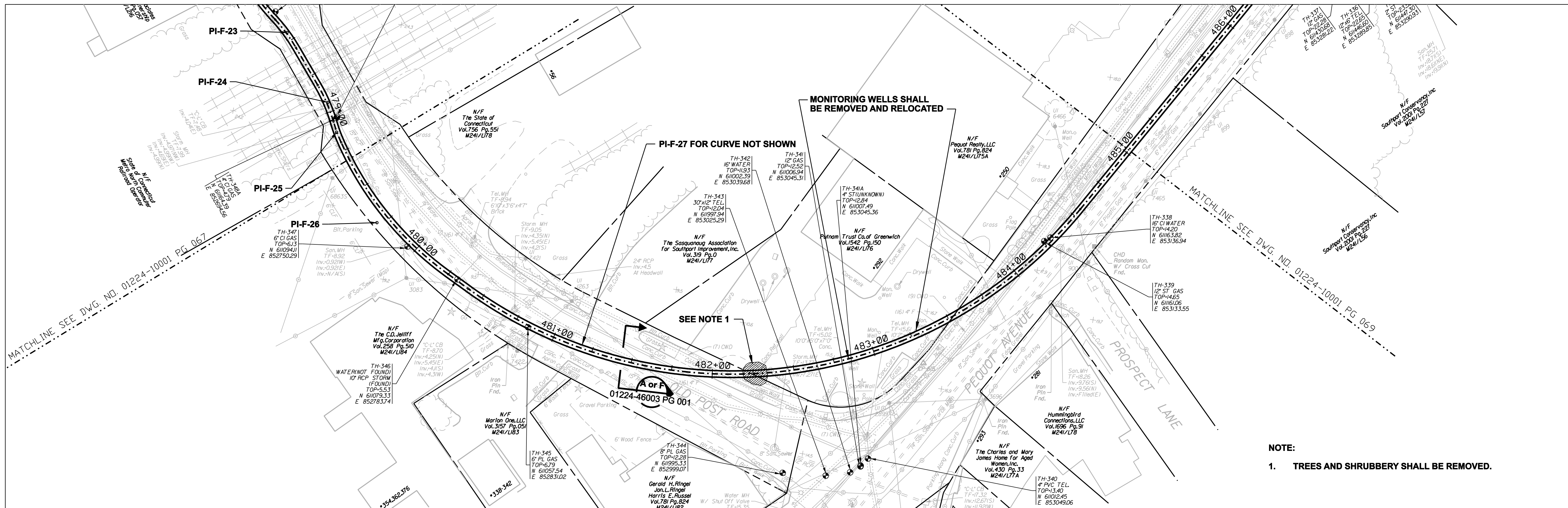
no.	date	revisions	by	chk
1	5/10/07	ISSUED CSC REVISED		CTC

MF	NO.	DATE	REVISIONS	BY	CHK	APP	APP

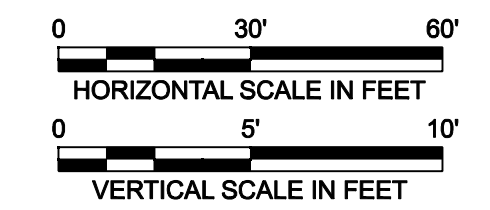
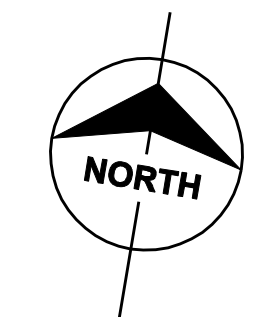
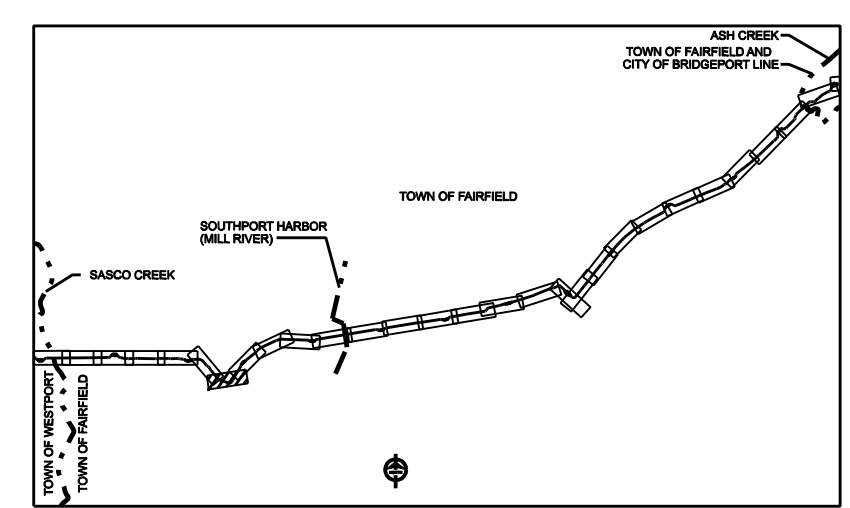
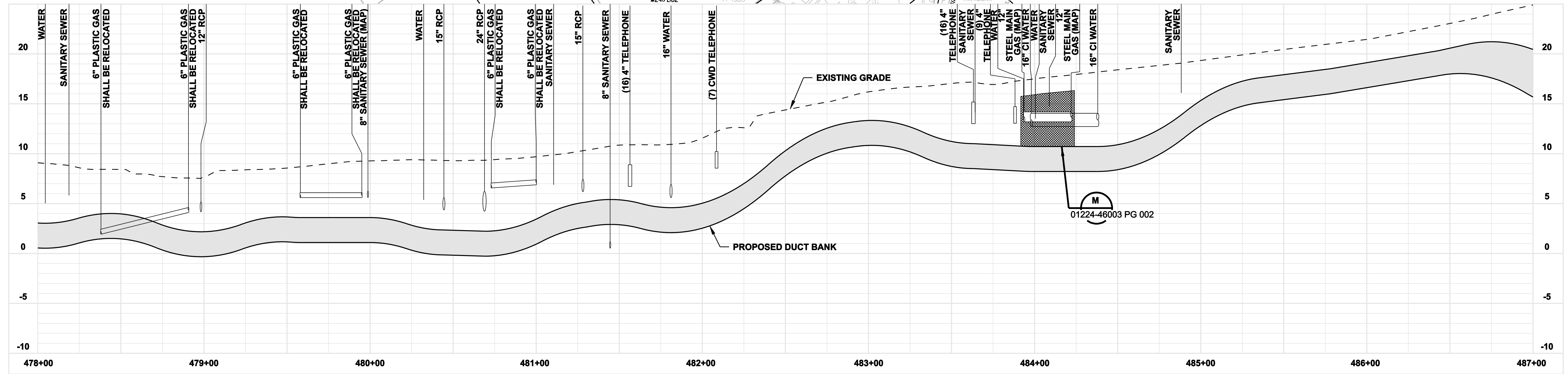
**NORTHEAST UTILITIES SERVICE CO.**

FOR THE CONNECTICUT LIGHT & POWER COMPANY  
TITLE: MIDDLETOWN-NORWALK 345KV TRANSMISSION PROJECT  
TOWN OF FAIRFIELD ROUTE  
PLAN AND PROFILE Sta. 472+00 to 480+00

BY	SEN-BMCD	CHKD	APP	APP
DATE	8-15-05	DATE	DATE	DATE
SCALE	AS NOTED	DWG. NO.	01224-10001 PG 067	



**NOTE:**  
 1. TREES AND SHRUBBERY SHALL BE REMOVED.



**ISSUED FOR CONSTRUCTION**

DOCKET No. 272

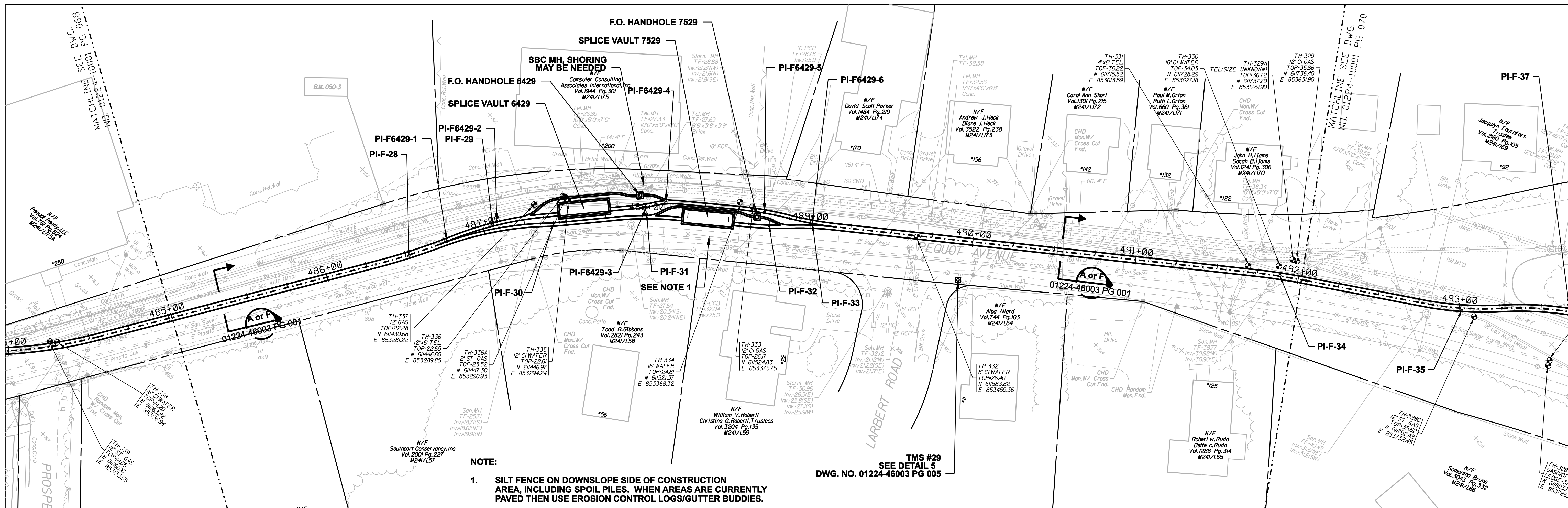


date 08/15/05  
 detailed L. ROWSE  
 designed C. COURTRIGHT  
 checked S. NEWLAND

no.	date	revisions	by	chk
1	5/10/07	ISSUED CSC REVISED	CTC	

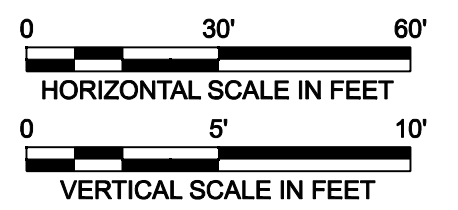
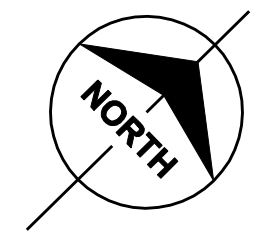
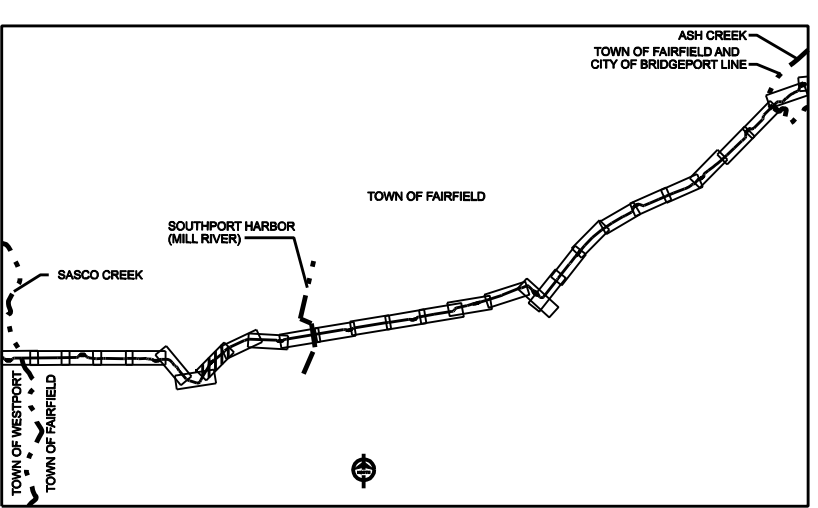
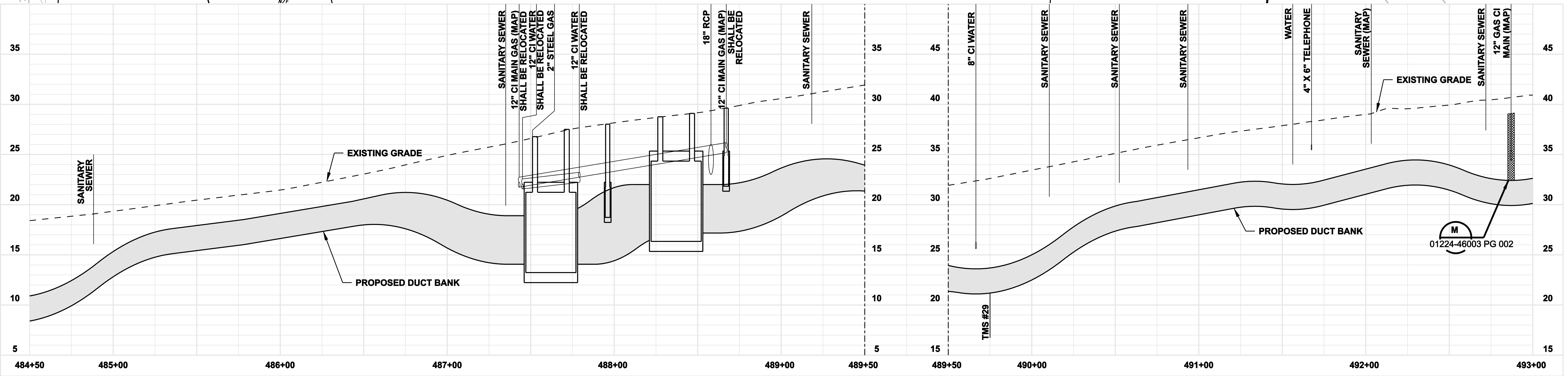
NORTHEAST UTILITIES SERVICE CO.				
FOR THE CONNECTICUT LIGHT & POWER COMPANY				
TITLE MIDDLETOWN-NORWALK 345KV TRANSMISSION PROJECT				
TOWN OF FAIRFIELD ROUTE PLAN AND PROFILE Sta. 478+00 to 487+00				
BY SEN-BMCD	CHKD	APP	APP	
DATE 8-15-05	DATE	DATE	DATE	
SCALE AS NOTED	DWG. NO.		01224-10001 PG 068	
D				
MF NO.	DATE	REVISIONS	BY	CHK APP APP

COPYRIGHT © 2007 BURNS & MCDONNELL ENGINEERING COMPANY, INC.



**NOTE:**  
 1. SILT FENCE ON DOWNSLOPE SIDE OF CONSTRUCTION AREA, INCLUDING SPOIL PILES. WHEN AREAS ARE CURRENTLY PAVED THEN USE EROSION CONTROL LOGS/GUTTER BUDDIES.

**TMS #29**  
 SEE DETAIL 5  
 DWG. NO. 01224-46003 PG 005



**ISSUED FOR CONSTRUCTION**

DOCKET No. 272



date 08/15/05  
 detailed L. ROWSE  
 designed C. COURTRIGHT  
 checked S. NEWLAND

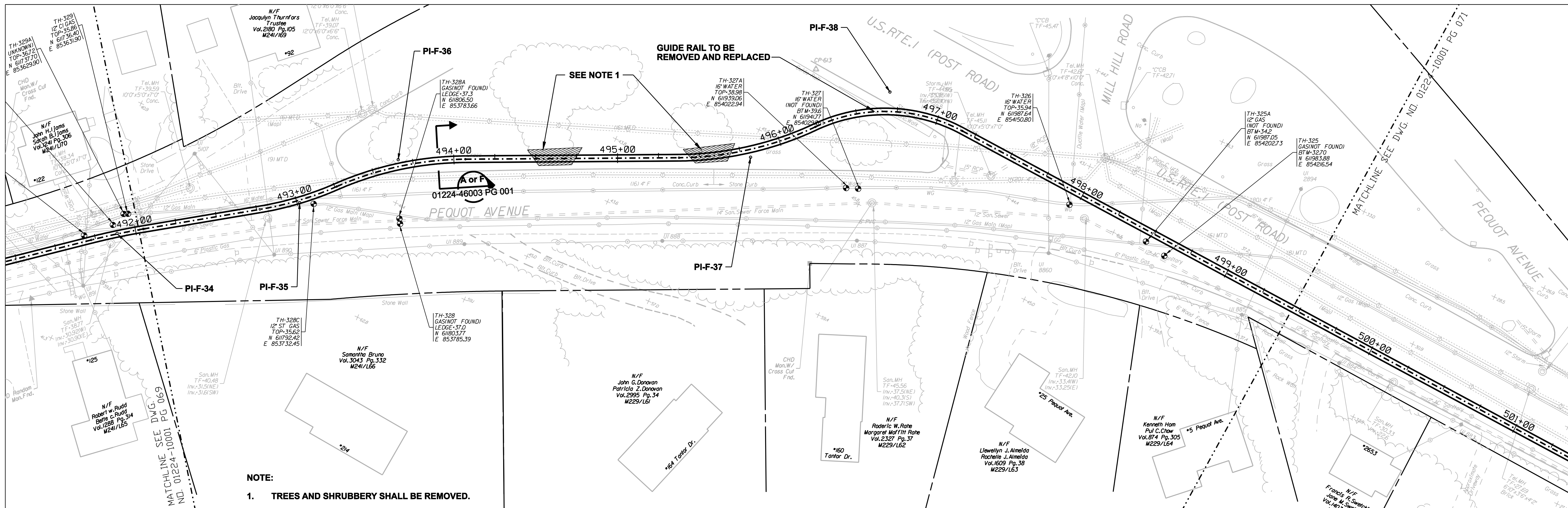
no.	date	revisions	by	chk
1	5/10/07	ISSUED CSC REVISED	CTC	

**NORTHEAST UTILITIES SERVICE CO.**

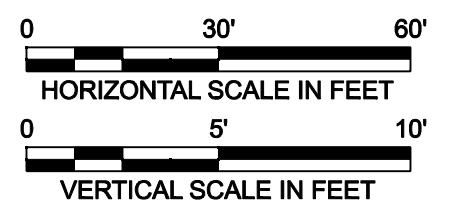
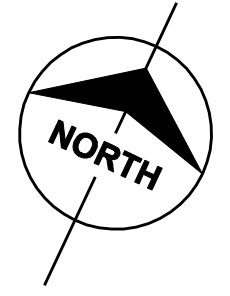
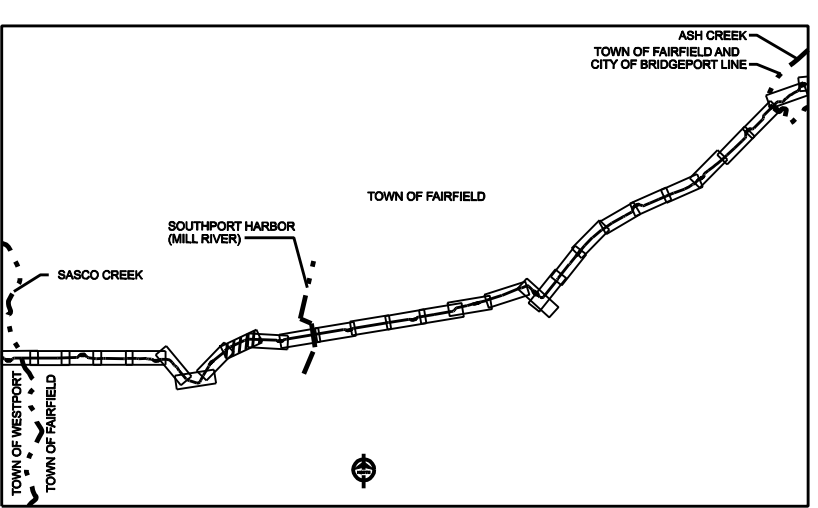
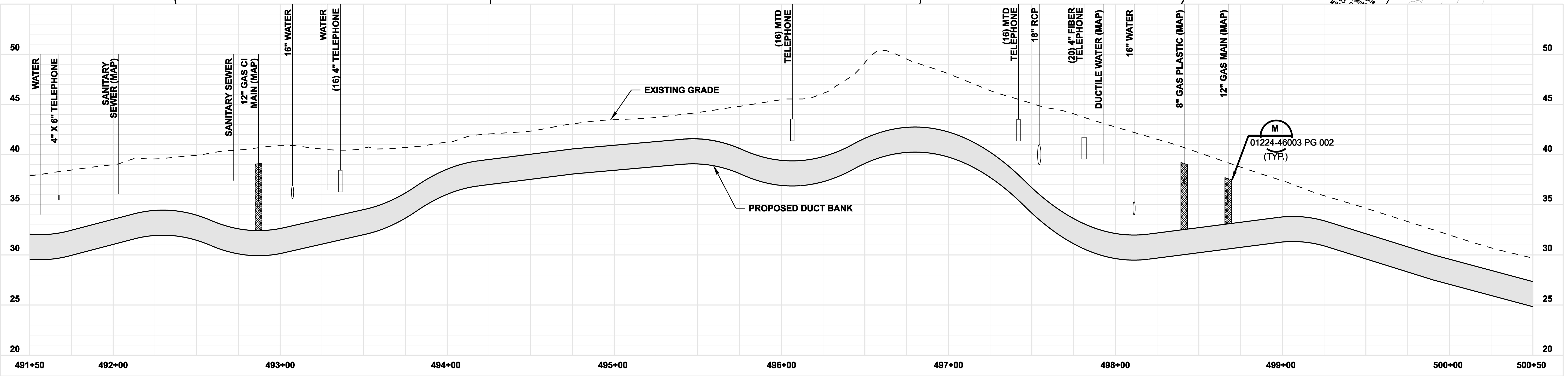
FOR	THE CONNECTICUT LIGHT & POWER COMPANY			
TITLE	MIDDLETOWN-NORWALK 345KV TRANSMISSION PROJECT			
	TOWN OF FAIRFIELD ROUTE PLAN AND PROFILE Sta. 484+50 to 493+00			
BY SEN-BMCD	CHKD	APP	APP	
DATE 8-15-05	DATE	DATE	DATE	
SCALE AS NOTED		DWG. NO.	01224-10001 PG 069	

COPYRIGHT © 2007 BURNS & MCDONNELL ENGINEERING COMPANY, INC.





**NOTE:**  
 1. TREES AND SHRUBBERY SHALL BE REMOVED.



**ISSUED FOR CONSTRUCTION**

DOCKET No. 272



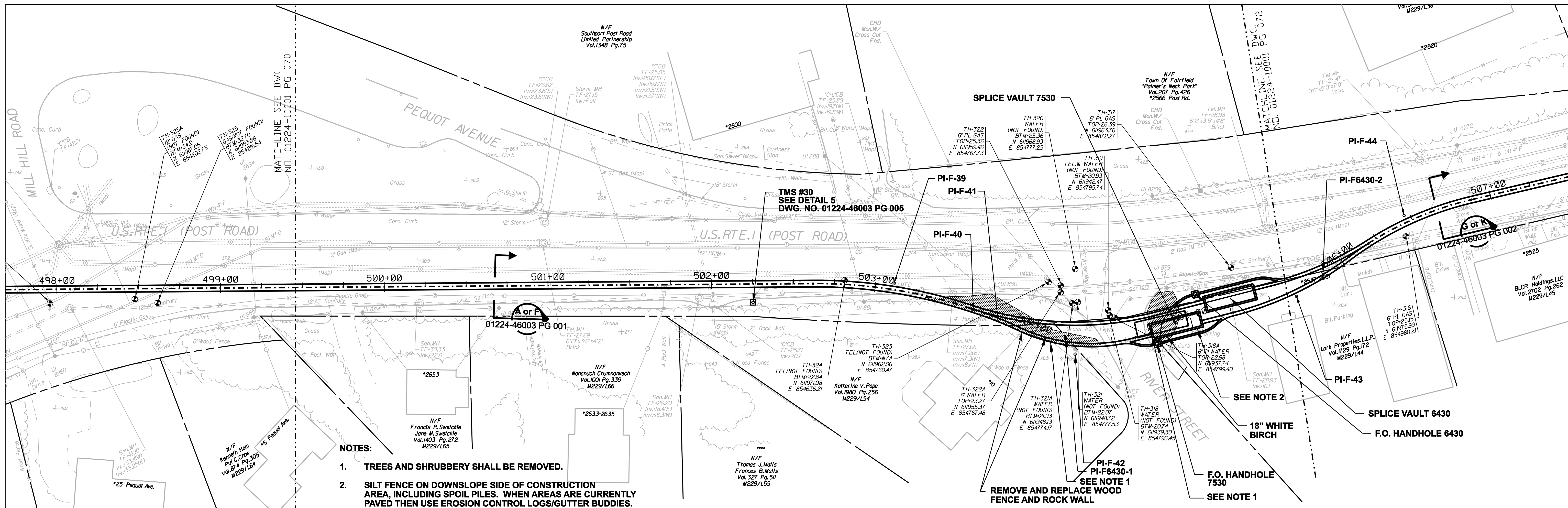
date 08/15/05  
 detailed L. ROWSE  
 designed C. COURTRIGHT  
 checked S. NEWLAND

no.	date	revisions	by	chk
1	5/10/07	ISSUED CSC REVISED	CTC	

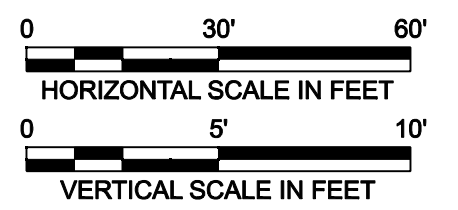
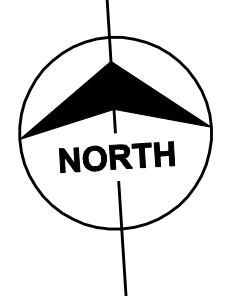
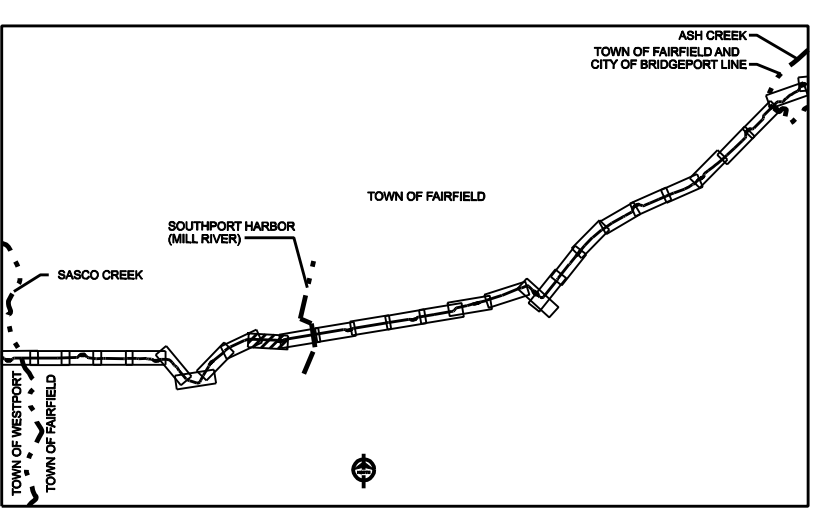
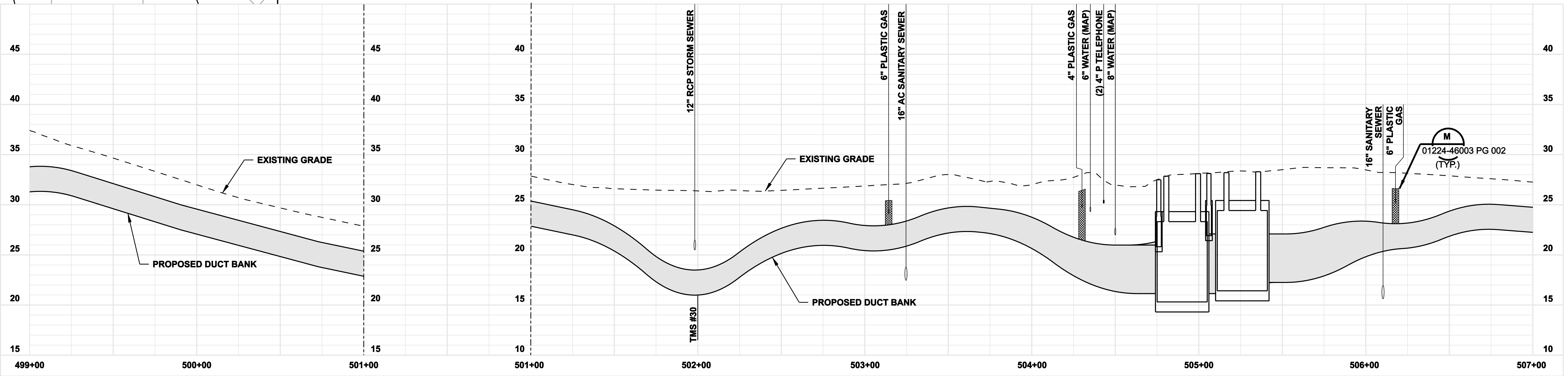
MF	NO.	DATE	REVISIONS	BY	CHK	APP	APP

NORTHEAST UTILITIES SERVICE CO.			
FOR THE CONNECTICUT LIGHT & POWER COMPANY			
TITLE MIDDLETOWN-NORWALK 345KV TRANSMISSION PROJECT			
TOWN OF FAIRFIELD ROUTE PLAN AND PROFILE Sta. 491+50 to 500+50			
BY SEN-BMCD	CHKD	APP	APP
DATE 8-15-05	DATE	DATE	DATE
SCALE AS NOTED	D	DWG. NO. 01224-10001 PG 070	

COPYRIGHT © 2007 BURNS & MCDONNELL ENGINEERING COMPANY, INC.



- NOTES:**
- TREES AND SHRUBBERY SHALL BE REMOVED.
  - SILT FENCE ON DOWNSLOPE SIDE OF CONSTRUCTION AREA, INCLUDING SPOIL PILES. WHEN AREAS ARE CURRENTLY PAVED THEN USE EROSION CONTROL LOGS/GUTTER BUDDIES.



**ISSUED FOR CONSTRUCTION**

DOCKET No. 272



date 08/15/05  
 detailed L. ROWSE  
 designed C. COURTRIGHT  
 checked S. NEWLAND

no.	date	revisions	by	chk
1	5/10/07	ISSUED CSC REVISED		CTC

MF	NO.	DATE	REVISIONS	BY	CHK	APP	APP

NORTHEAST UTILITIES SERVICE CO.			
FOR THE CONNECTICUT LIGHT & POWER COMPANY			
TITLE MIDDLETOWN-NORWALK 345KV TRANSMISSION PROJECT			
TOWN OF FAIRFIELD ROUTE PLAN AND PROFILE Sta. 499+00 to 507+00			
BY SEN-BMCD	CHKD	APP	APP
DATE 8-15-05	DATE	DATE	DATE
SCALE AS NOTED	D	DWG. NO. 01224-10001 PG 071	

COPYRIGHT © 2007 BURNS & MCDONNELL ENGINEERING COMPANY, INC.