

Mapping of the project area, produced by both KARS and CSF.



CSF map

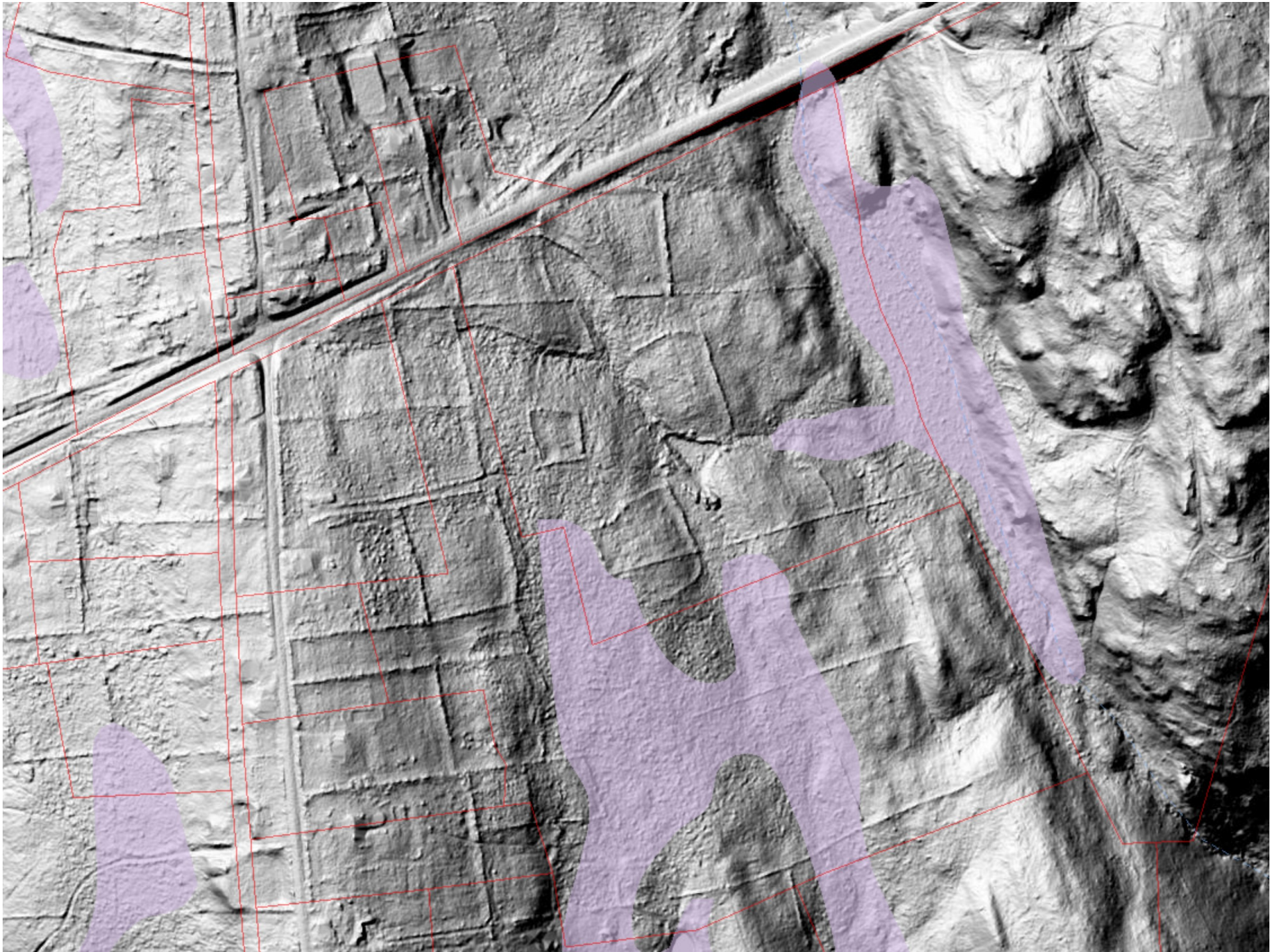
The KARS map on the following page represents an effort to reconcile three data layers:

1. The CSF site plan resulting from the A2 survey (in red). The three panel array enclosures are approximately outlined in purple.
2. The property boundaries from the Killingworth GIS (in green)
3. The state's LIDAR and parcel boundary data. Wet soils in cyan.

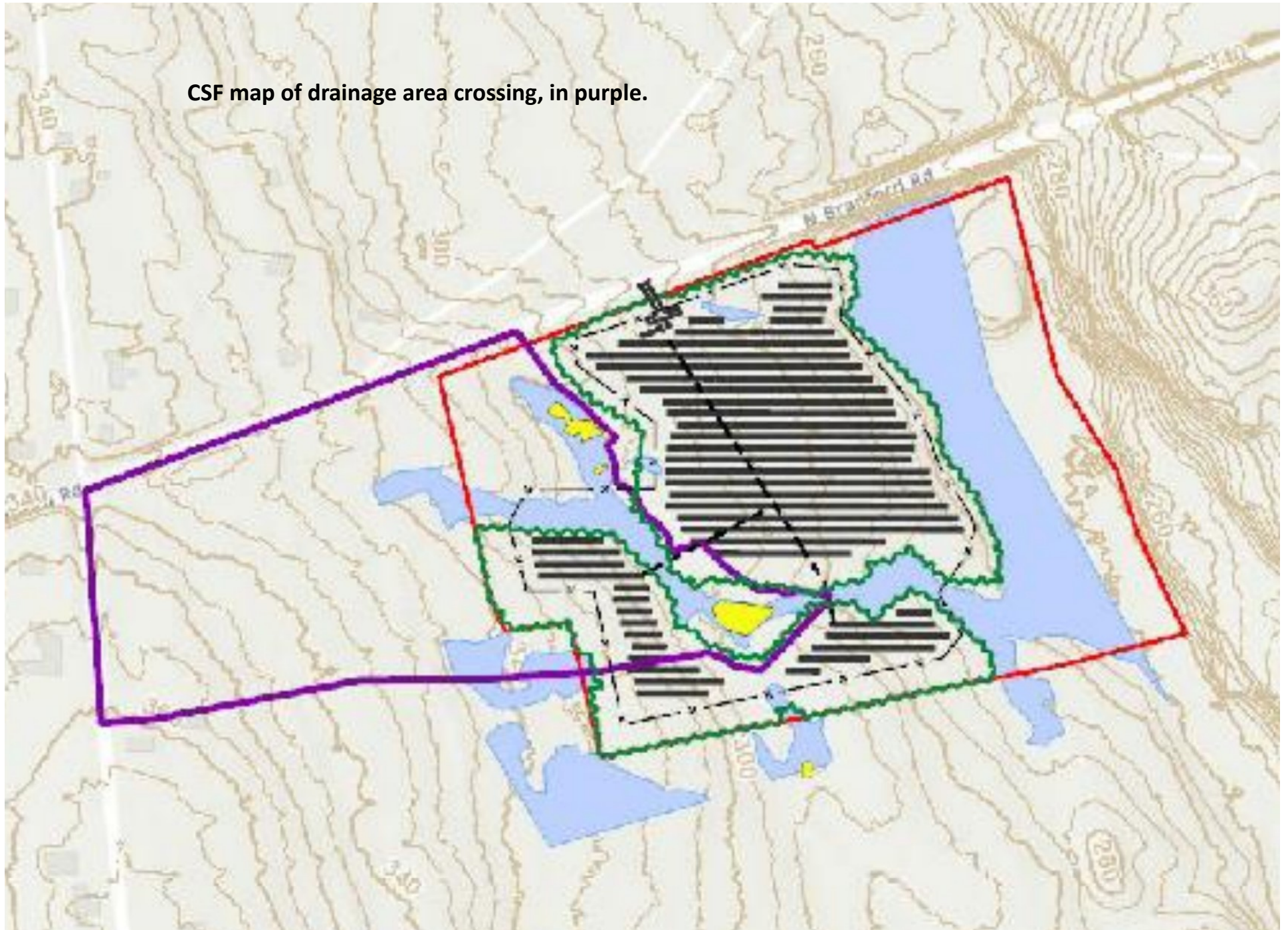
The state's parcel boundaries (derived from the town's) are off by about 130 ft too far west and 30 ft too far south. The town's parcel lines were proven incorrect by the A2 survey for this one parcel. They do not possess the offset that the state's boundaries exhibit.

The intent of this map is to provide a better sense of the location of the panel arrays atop the LIDAR depicted topography, which is accurate to 9 inches.

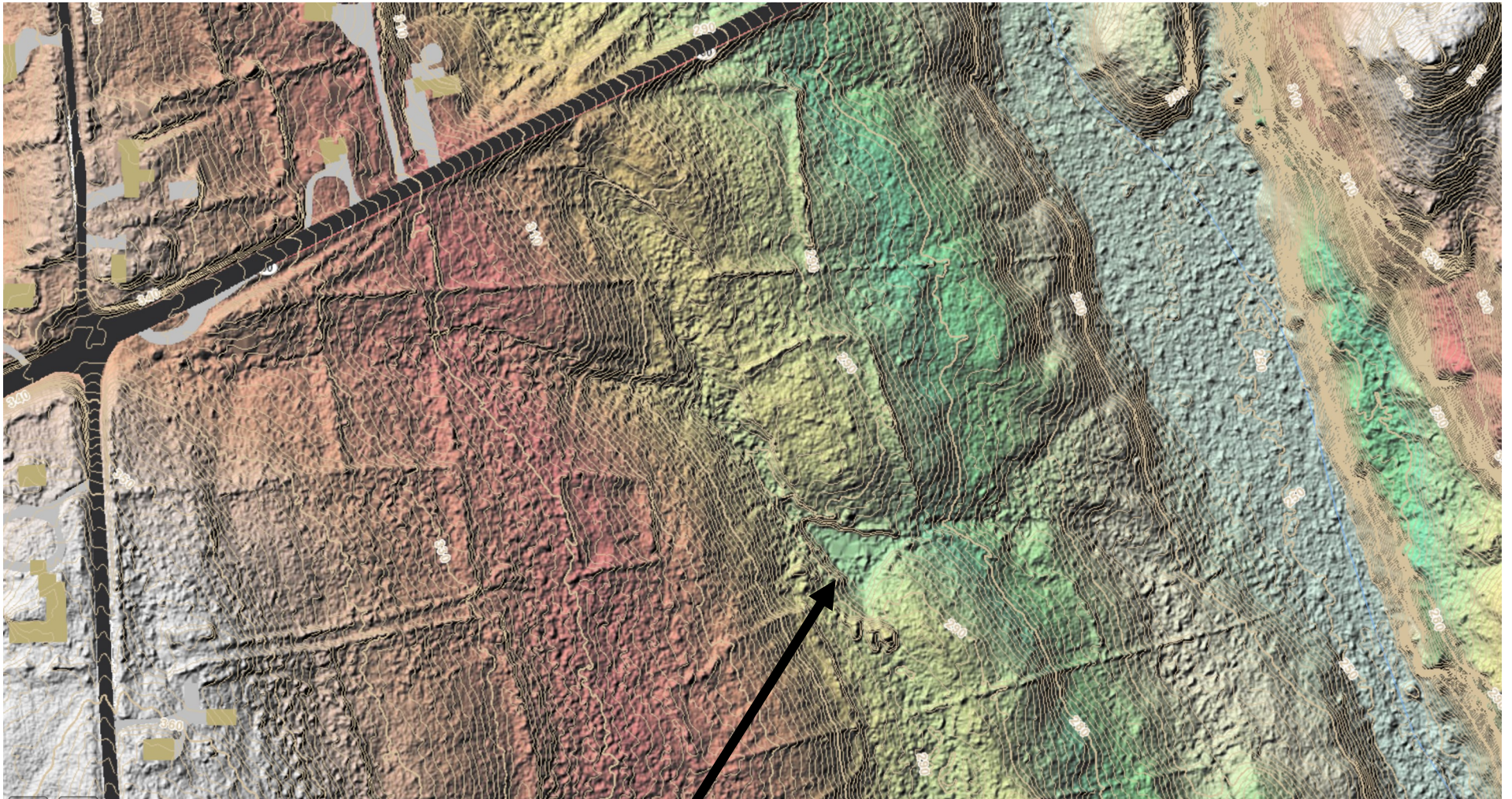




CSF map of drainage area crossing, in purple.

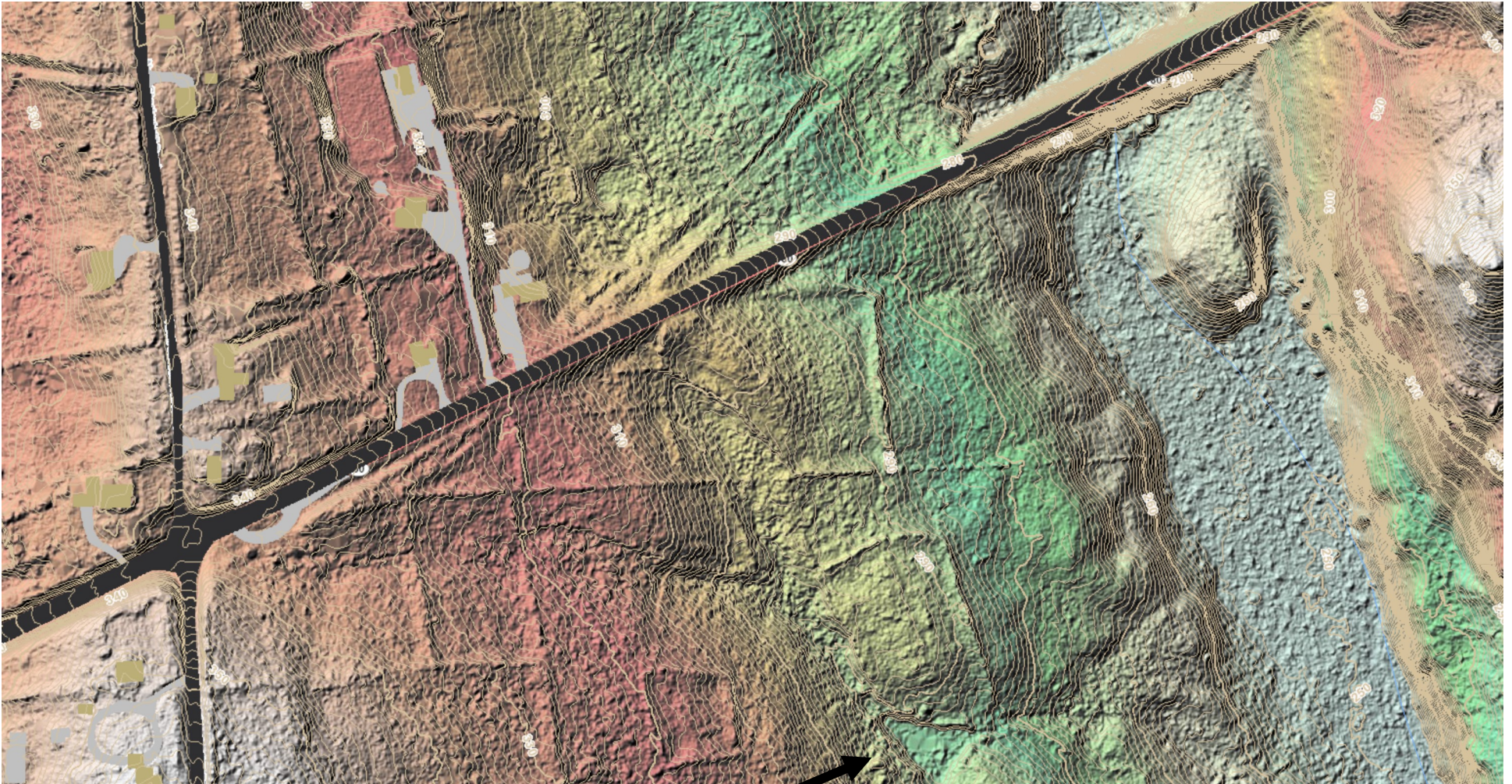


KARS map of the southern portion of the project area, with contours and LIDAR detected stone walls.



Man-made pond

KARS map of the northern portion of the project area, with contours and LIDAR detected stone walls.



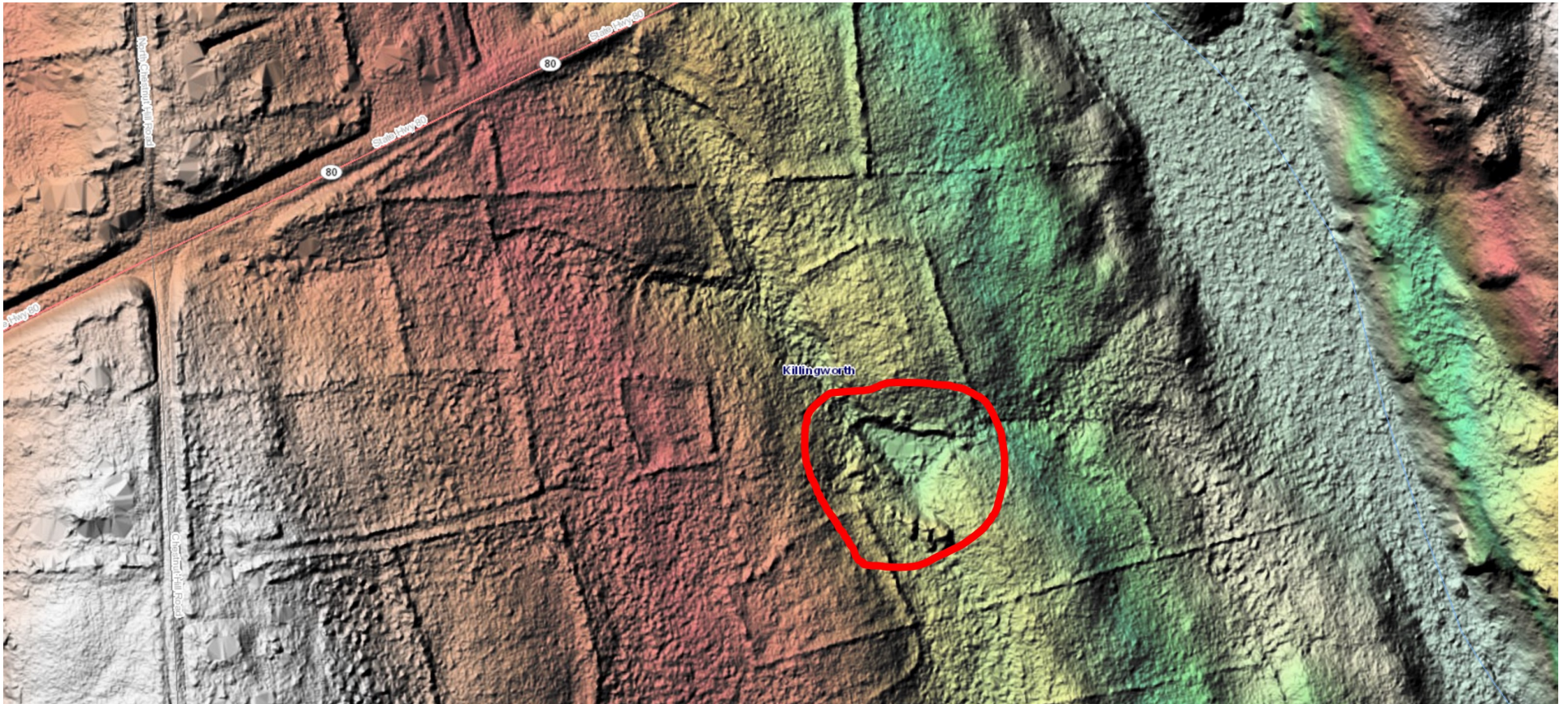
Man-made pond



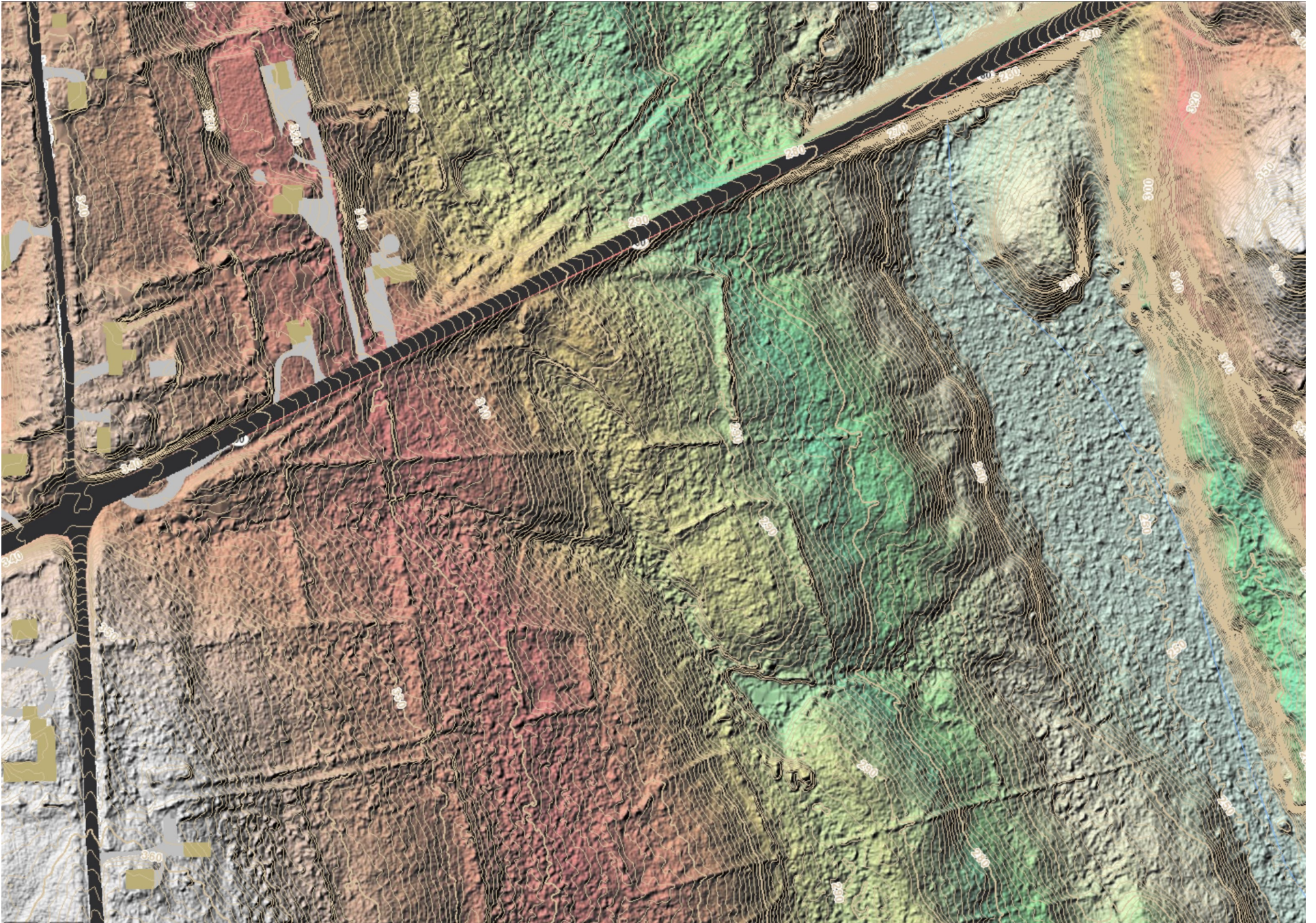
LIDAR map, with man-made pond indicated. Elevation shading scales from gray (highest) down to light green (lowest).

Stone walls clearly visible. Wet soils on the east side of map display little to no standing water

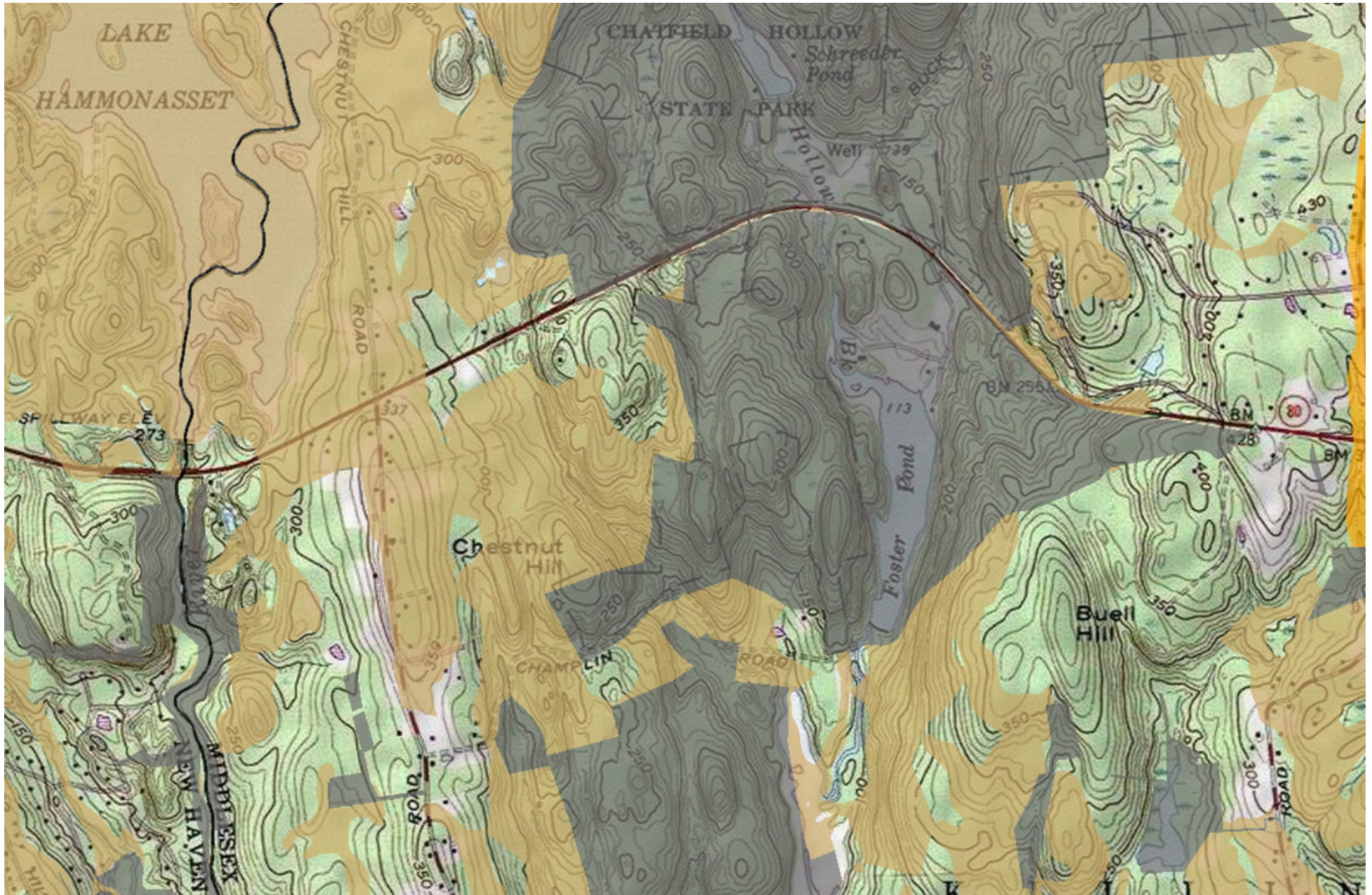
(LIDAR data collected in March/April 2016, when the water table is normally near the high end of its seasonal range.)



Two previous maps, merged together.

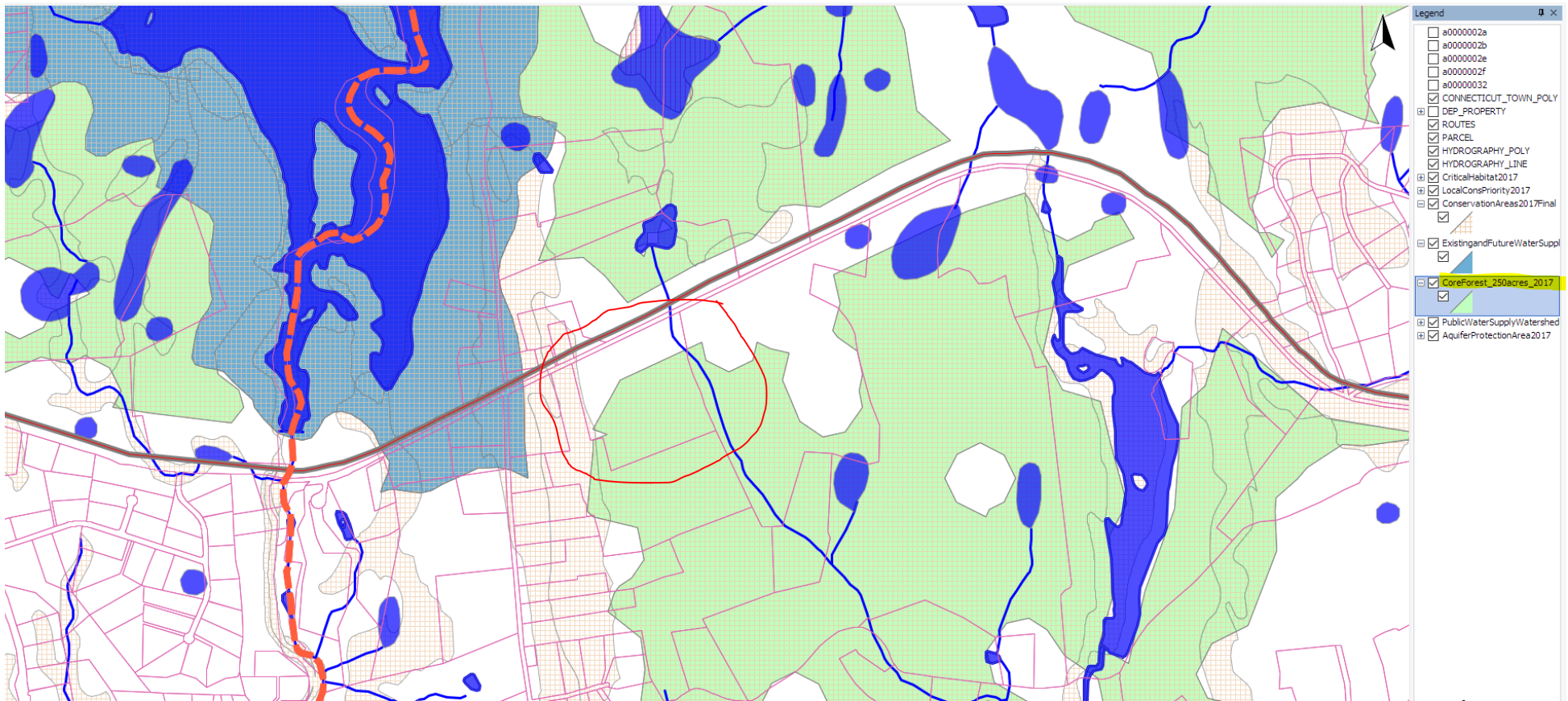


KARS overview map of state-designated core forest areas in orange. The gray shaded area is both local open space (both state and private), and core forest. The open spaces depicted here include Chatfield Hollow State Park, Forster's Pond State Park, Deer Lake Boy Scout Reservation, et al. The Hamonnasset River, forming the Madison-Killingworth border, is displayed on the west side of this map, and all this area is part of its watershed.



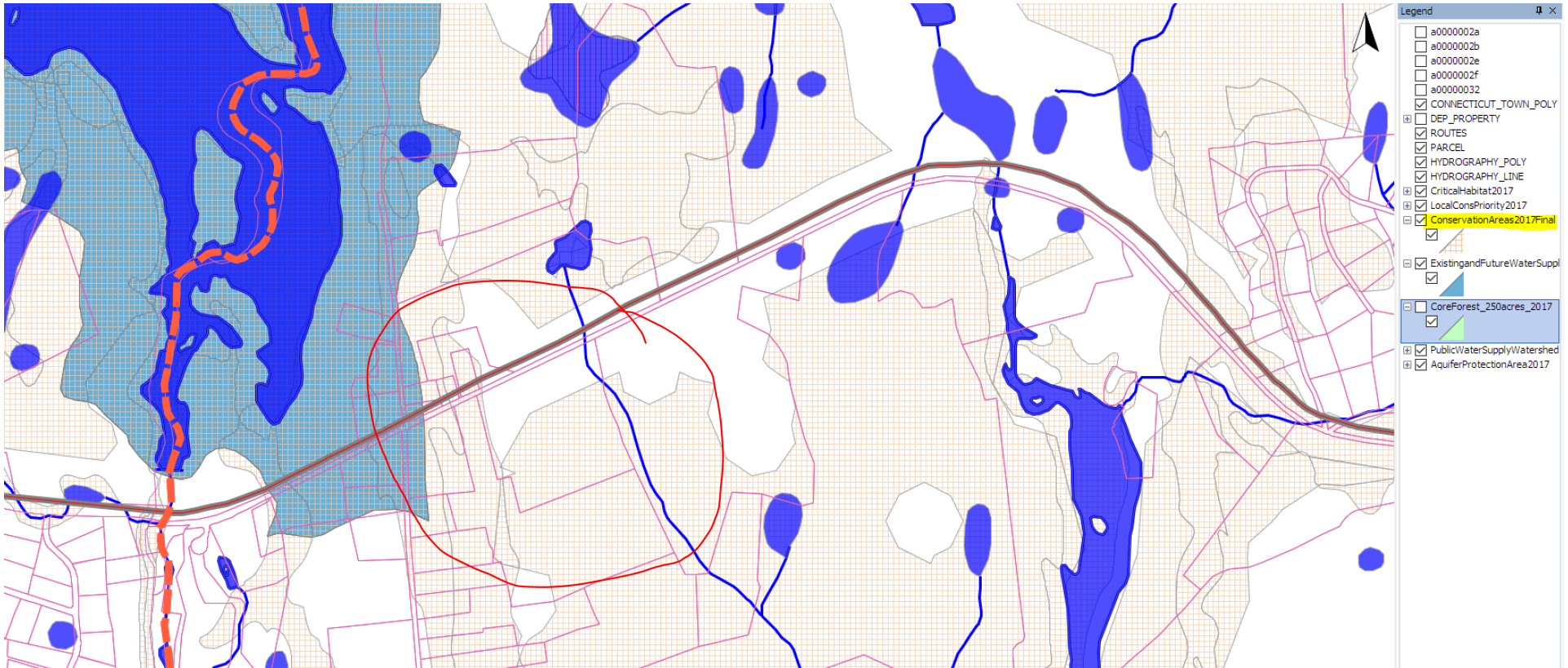
KARS map of state-designated core forest areas in green. CSF parcel circled in red. The area on the northwest side of the RT 80 and Chestnut Hill Rd. intersection, that is shaded slate blue, is both core forest and watershed. The red dashed line is the Madison border. The state has designated RT 80 as scenic on the west side of this border.

The state's parcel boundaries (derived from the town's) are off by about 130 ft too far west and 30 ft too far south. The town's parcel lines were proven incorrect by the A2 survey for this one parcel. They do not possess the offset that the state's boundaries exhibit.



KARS map of state-designated conservation areas in beige. CSF parcel circled in red. The area on the northwest side of the RT 80 and Chestnut Hill Rd. intersection, that is shaded slate blue, is both conservation and watershed. The red dashed line is the Madison border. The state has designated RT 80 as scenic on the west side of this border.

The state's parcel boundaries (derived from the town's) are off by about 130 ft too far west and 30 ft too far south. The town's parcel lines were proven incorrect by the A2 survey for this one parcel. They do not possess the offset that the state's boundaries exhibit.



On this and the preceding map, the state designates the same areas as both core forest and conservation lands.

KARS map of the state's LIDAR data. CSF parcel (inaccurate) boundaries highlighted in yellow, other parcel lines in red.

The state's parcel boundaries (derived from the town's) are off by about 130 ft too far west and 30 ft too far south.

