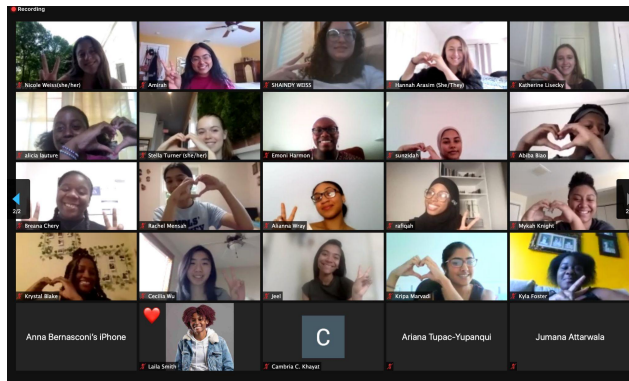
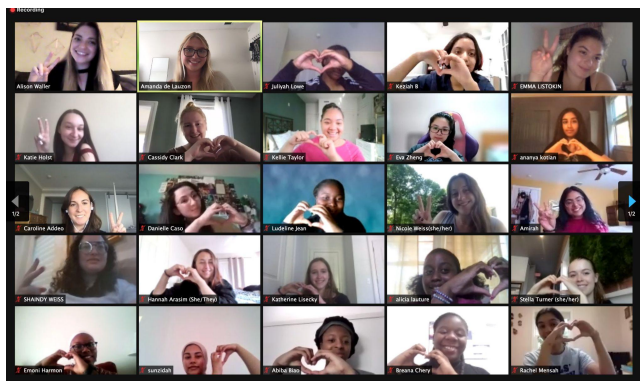




She Works 2021



COHORT DEMOGRAPHICS

68 diverse, talented young women | 72% women of color
 25% rising high school seniors | 75% college students
 61% Connecticut residents | 29% out of state

Participating employers include:

- | | |
|----------------------------------|--|
| AXA XL | London Stock Exchange Group (formerly Refinitiv) |
| Style of Success | STAR, Inc. Lighting the Way |
| 1W LLC | ACTIONNATE |
| Connecticut Women's Hall of Fame | |
| HTG Investment Advisors | Salt Cave of Darien |
| SōlHaus (SolHaus LLC) | Power Source Functional Therapy |
| Summer Theatre of NC | Grace Farms |
| Vantage Group Holdings | Janice Beetle Books LLC |
| Kids Helping Kids | Dragonfly Pond LLC |
| The Rowan Center | Opus 30 Justice |
| Her Move, LLC | Caroline Simmons for Mayor Campaign |
| RISE Brewing Co. | Thornhill Farm |
| Soft Skills Group | League of Women Voters of New Canaan |
| Silver Hill Hospital | Trevor & Jill Talk Show |