

From: dph.immunizations@ct.gov <noreply@everbridge.net>

Sent: Monday, March 3, 2025 1:48 PM

Subject: CVP Shipment and Inventory Updates



March 3, 2025

This communication is being sent to all key contacts at provider organizations enrolled in the pediatric CT Vaccine Program (CVP) – please read this message in its entirety. Please feel free to share it with others in your organization who may benefit from the update. Note that all our communications are archived on our web site [here](#).

Dear CVP providers,

The Connecticut Department of Public Health (DPH) Immunizations Program wants to make you aware that McKesson will begin using the new electronic TagAlert temperature monitors for refrigerated vaccine shipments next month. In addition, we provide RSV and flu vaccine inventory reminders.

McKesson Shipments

These TagAlert monitors are similar to the ones that are currently being used in the frozen Moderna COVID shipments, and they monitor for both warm and cold excursions during shipment. McKesson will continue to use a qualified cooler and pack out, in addition to these new monitors. The new monitors will be included in refrigerated shipments beginning on March 10, 2025.

Please see the attached flyer for more information. All shipping components, e.g., packing slips, boxes, etc. should be kept until the vaccine order has been reviewed by staff to confirm all vaccines for the shipment were included. If there are any issues with your vaccine order, please contact DPH immediately via [help desk](#) (select system: Immunizations [CT WiZ] – category: Clinic Administration – topic: CT WiZ Training and Inventory Support) or call our immunization program phone at 860-509-7929.

RSV

As a reminder, RSV doses should continue to be used until their expiration date. Doses can be stored for next RSV season if the expiration date permits. If your clinic has doses that you will not be able to administer, please submit a [help desk ticket](#) (select system: Immunizations [CT WiZ] – category: Clinic Administration – topic: CT WiZ Training and Inventory Support) to receive a list of possible transfer sites. Doses must be administered or transferred prior to expiration. Any doses wasted will be subject to the restitution policy.

Flu

State supplied flu vaccines should be kept until the expiration date. Once doses have expired, a return should then be completed in CT WiZ for you to receive a shipping label. Doses cannot be returned prior to expiration. Flu doses are an exception to the restitution policy and will not require replacement. For more information on how to complete a return in CT WiZ, please visit our CT WiZ training [website](#).

Thank you for your continued support and cooperation.

For the CT DPH Immunization Program, visit: [Contact Us](#)

If you would like to subscribe to receive these communications, please complete this form. If you would like to unsubscribe from receiving these communications, please complete this form.

Refrigerated Vaccine Inside at 2°C to 8°C



RECEIVING AND UNPACKING STEPS

- 1 IMMEDIATELY** open the cooler and follow the TagAlert receiver instructions. See below for details.
- 2 Compare** the packing list to the contents of the cooler to confirm they match. See below.
- 3 Inspect** the vaccine and report any tampering (e.g., broken seal). See back for details.
- 4 Place vaccine** in appropriate storage immediately upon receipt.
- 5 Repack** the cooler for refurbishing. See back for details.
- 6 Return** the cooler via UPS. See back for details.



INSTRUCTIONS FOR CONFIRMING PROPER SHIPPING TEMPERATURES

Receiver Instructions

- 1. Stop TagAlert® Indicator**
Press and hold the START & STOP button for 5 seconds until Stop icon ● appears.
- 2. Read Indicator Status**
✓ Accept: Left arrow ◀ points to Green check mark: Ready for Use.
✗ Reject: Right arrow ▶ points to Red X and numbers 1, 2 and/or 3 are visible—a temperature alarm has triggered. **QUARANTINE PRODUCT** and call +1-877-836-7123 or your state/local immunization program right away.

T17003135 Rev. A

TAGALERT INFORMATION

- Remove the TagAlert temperature monitor from the box. The TagAlert is located inside the inner box, next to the vaccine.
- Follow the recipient instructions on the blue card:
 - Stop TagAlert Indicator.** Press and hold the Start and Stop button until the Stop icon appears.
 - Read Indicator Status.** Determine if the appropriate temperature was maintained during transit.
 - TagAlert Monitor Concerns?** Please call **1-877-836-7123**.



Vaccine should be placed in appropriate storage immediately upon receipt.



REVIEW YOUR PACKING SLIP

McKesson Specialty Care Dist. 8745 Forest Hill Irene, Suite 105 Olive Branch, MS 38654		Packing Slip		Page 1 of 2									
		This is not an invoice											
Ship-to: McKesson Specialty Care Dist. 8745 Forest Hill Irene, Suite 105 Olive Branch, MS 38654		Awarde McKesson Specialty Care Dist. 8745 Forest Hill Irene, Suite 105 Olive Branch, MS 38654		<div> Provider PIN: WVA200066 Delivery Number: 230684533 Quality Check Date: 02/11/2025 </div>									
				<div> Internal use only </div>									
NDC	Customer P.O.	Material Description Manufacturer	MFR Lot#	Exp. Date	VFC Doses	317 Doses	State Doses	CHIP Doses	Order Qty	Ship Qty	Unit Price	Extended Price	
19515-0810-52 5017406	394261	FLU; SYR; 10-pack (TIV) PED CDC GLAXO SMITHKLINE	AE2J7	06/16/2025	10	0	0	0	10	10	\$15.22	\$152.20	
Total									10	10		\$152.20	

Verify the **MFR Lot#** and the **Ship Qty** on the packing slip with the contents of the cooler.
The **Ship Qty** is the total number of vaccine cartons.

Refrigerated Vaccine Inside at 2°C to 8°C



WHO TO CALL

Questions?

Need a UPS Pickup of your EcoFlex cooler?

CONTACT

UPS Phone Number: 1-800-377-4877

7:00AM – 9:00PM EST Monday – Friday

7:30AM – 6:00PM EST Saturday

UPS Email: Healthcaresupport@UPS.com

7:00AM – 9:00PM EST Monday – Friday

7:30AM – 6:00PM EST Saturday

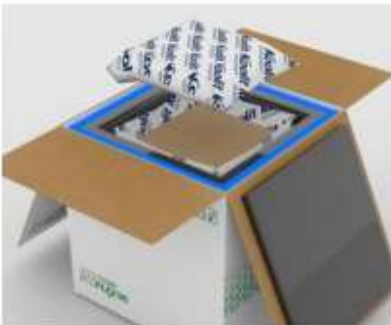
WEB: [UPS.com/healthcare](https://www.ups.com/healthcare)

Provide the McKesson Account Number: 20V8R9



RETURN YOUR COOLER

PLEASE
RETURN COOLER
DO NOT
DISPOSE



Step 1: Open shipper and remove the top PCM gel pack(s).



Step 2: Remove the product(s) from the inner corrugated box.



Step 3: Ensure the inner corrugated box is back in the EcoFlex shipping system.



Step 4: Place the top PCM gel pack(s) back on top.



Step 5: Fold in the original outer flaps. Fold in the remaining flaps with return.



Step 6: Schedule a pickup with UPS. Contact UPS either by phone or by email.



The return shipping label can be found on the inside flap of your EcoFlex box. For more information, contact info@coldchaintech.com

McKESSON