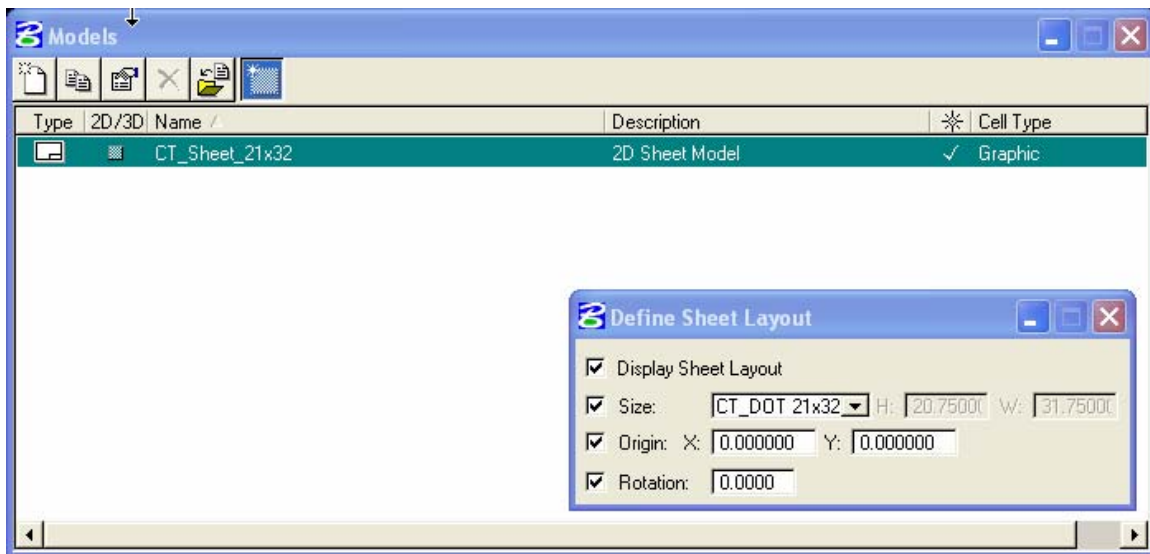


Interim Work Flow for Creating a Detailed Estimate Sheet Using MicroStation V8

1. Create a new file using the following seed file:
CTDOT_v8_workspaces\CTDOT_Standards\Standards\seed\2007\CT_Sheet_Civil.dgn
2. Place a transient Shape. Click the sheet model icon and the Models dialog box will open. Click on the Define Sheet Model Icon. Toggle on the display Sheet Layout box and click on your view window. A gray transient plotting shape will appear.



3. Place the Plan Border Cell. Find Contract Bdrs on the Highway Bar Menu and pick Plan. Tentative to the lower left hand corner of the transient shape and accept.
4. Place the Detailed Estimate Grid work. Find Contract Bdrs on the Highway Bar Menu and pick the desired Estimate sheet grid. Tentative to the lower left hand corner of the transient shape and accept.



5. Attach the Estimating Item Cell Library
Highways_workspace\Standards\cell\Estimate_Cell_Lib\Estimate.cel
Use a scale of 6.5 to have the cells come in the correct size.
6. The tags have been all ready placed in the file. To fill out your project information select the EDIT TAGS tool and click on the tag or utilize the tag manager (the workflow can be found on the CTDOT_Uilities_2007 bar menu.

