

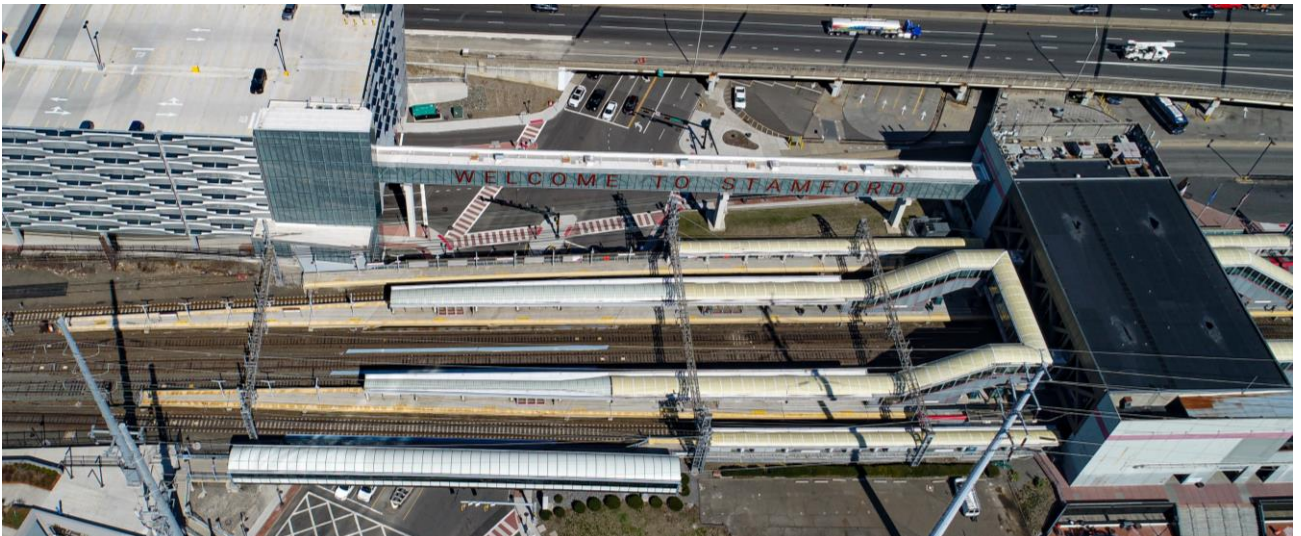
Stamford Transportation Center TOD and Joint Development Project

About



The Stamford Transportation Center (STC) is a multi-modal rail and transit hub that links Stamford, Connecticut's second largest and fastest growing city, to New York and to key points along the eastern seaboard including Boston, Philadelphia, and Washington D.C. Stamford is part of a dynamic region that includes the headquarters of several Fortune 500 companies, numerous financial firms, and a metropolitan population of over 950,000. With direct commuter rail and Amtrak service into New York City's Grand Central Terminal, and future direct service into New York's Penn Station, the STC will continue to be a key transportation hub for years to come.

The STC serves over 5 million Metro-North commuter rail, Amtrak, and CTtransit bus passengers every year. After 50 years of service, facilities within the station at the end of their useful life need to be improved or replaced. The Connecticut Department of Transportation (CTDOT) is seeking innovative approaches to improve the station while fostering transit-oriented development (TOD) on adjacent state-owned properties. Significant housing demand exists in the areas around the STC, and CTDOT has several underutilized, state-owned properties near the STC that could be incorporated into an overall development plan. Development opportunities in Stamford are likely to include multi-family residential, commercial office, and civic/institutional uses.



Stamford Transportation Center TOD and Joint Development Project

Request for Proposals (RFP)

In 2025, CTDOT launched a once-in-a-generation public-private initiative to transform the STC into a modern transportation hub supported by TOD and new public infrastructure. CTDOT issued a Request for Proposals (RFP) for a qualified private developer to lead the joint development effort. Proposals, submitted in December 2025, are now under review, with a developer expected to be selected in early 2026. The project aims to leverage \$400 million in state funding with private investment in station facilities, mixed-use development, and shared infrastructure.

The project will result in the delivery of a significant transit-oriented development (TOD) and transit facility for the state of Connecticut in one project using a progressive design build approach. Goals of the project include:

- Transform the STC into a modern, world-class facility that rivals the major transportation hubs from around the U.S. and the world
- Replace, relocate, and repurpose facilities within the station area to ensure that Stamford will continue to be a key transportation hub for years to come
- Co-develop STC facilities with transit-oriented development incorporating housing, mixed use and commercial/retail components
- Construct common infrastructure that supports the STC and TOD components of the project
- Create a consistently positive experience for the people of Connecticut that optimizes mobility, supports economic vitality, and recognizes the impact of transit-infrastructure development on the public and the environment

