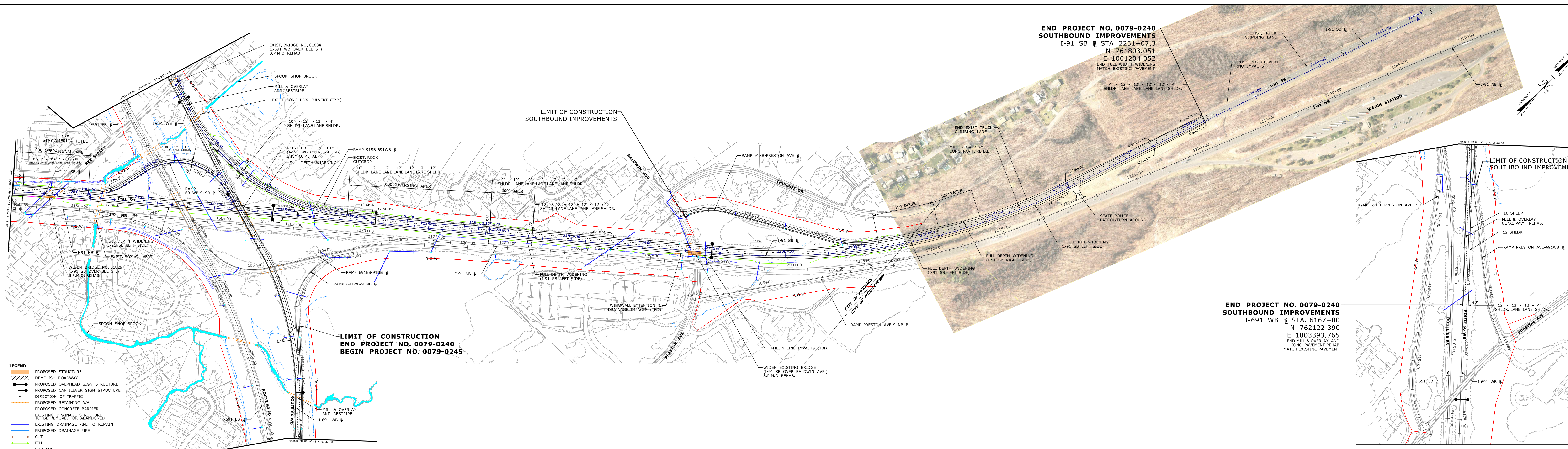


PROJECT: I-91/1-691/ROUTE 15 INTERCHANGE IMPROVEMENTS, CONTRACT SHEET, SOUTHBOUND IMPROVEMENTS, STA. 6167+00 TO STA. 6175+00
 DRAWING NO.: SB-HWY-03
 SHEET NO.: 3 OF 3
 DATE: 10/27/2020
 CHECKED BY: ALK
 DESIGNED BY: CCI
 PREPARED BY: CCI

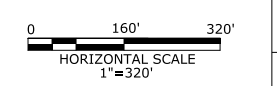


END PROJECT NO. 0079-0240
SOUTHBOUND IMPROVEMENTS
 I-91 SB @ STA. 2231+07.3
 N 761803.051
 E 1001204.052
 END FULL WIDTH WIDENING
 MATCH EXISTING PAVEMENT

END PROJECT NO. 0079-0240
SOUTHBOUND IMPROVEMENTS
 I-691 WB @ STA. 6167+00
 N 762122.390
 E 1003393.765
 END MILL & OVERLAY, AND
 CONC. PAVEMENT REHAB
 MATCH EXISTING PAVEMENT

- LEGEND**
- PROPOSED STRUCTURE
 - DEMOLISH ROADWAY
 - PROPOSED OVERHEAD SIGN STRUCTURE
 - PROPOSED CANTILEVER SIGN STRUCTURE
 - DIRECTION OF TRAFFIC
 - PROPOSED RETAINING WALL
 - PROPOSED CONCRETE BARRIER
 - EXISTING DRAINAGE STRUCTURE TO BE REMOVED OR ABANDONED
 - EXISTING DRAINAGE PIPE TO REMAIN
 - PROPOSED DRAINAGE PIPE
 - CUT
 - FILL
 - WETLANDS
 - FEMA 100 YEAR FLOODPLAIN
 - N/A HIGHWAY LINE (R.O.W.)
 - STRIP OVERLAY, PATCH CONCRETE, RE-MEMBRANE & INSTALL OVERLAY

PRELIMINARY
ENGINEERING REVIEW



PARSONS
G&M2



I-91/1-691/ROUTE 15
 INTERCHANGE IMPROVEMENTS
 CITIES OF MERIDEN AND MIDDLETOWN, CT

PROJECT NO. 0079-0240
 DRAWING TITLE:
 SOUTHBOUND IMPROVEMENTS
 HIGHWAY PLAN - 3

DRAWING NO. SB-HWY-03
 SHEET NO.

