

Welcome

Hartford Line Windsor Locks Station Public Information Meeting



HARTFORD LINE



Windsor Locks Town Hall – Thursday, September 19, 2019



INTRODUCTIONS

Connecticut Department of Transportation

- **Julianne Chatman**, Project Engineer
- **Jason Boice**, Project Coordinator
- **Bruce Olmstead**, Transportation Supervising Engineer
- **Christopher Bonsignore**, Principal Engineer
- **Richard Jankovich**, Assistant Rail Administrator

INTRODUCTIONS

PROGRAM TEAM

- **Robert Yirigian**, Program Manager – WSP USA
- **Bart Sweeney**, Track and Roadway Design – HNTB Corp.
- **David Geissert**, Structural Design – H.W. Lochner
- **David Tudryn**, Station Design – Michael Baker International
- **Robert Braren**, Station Design – Michael Baker International

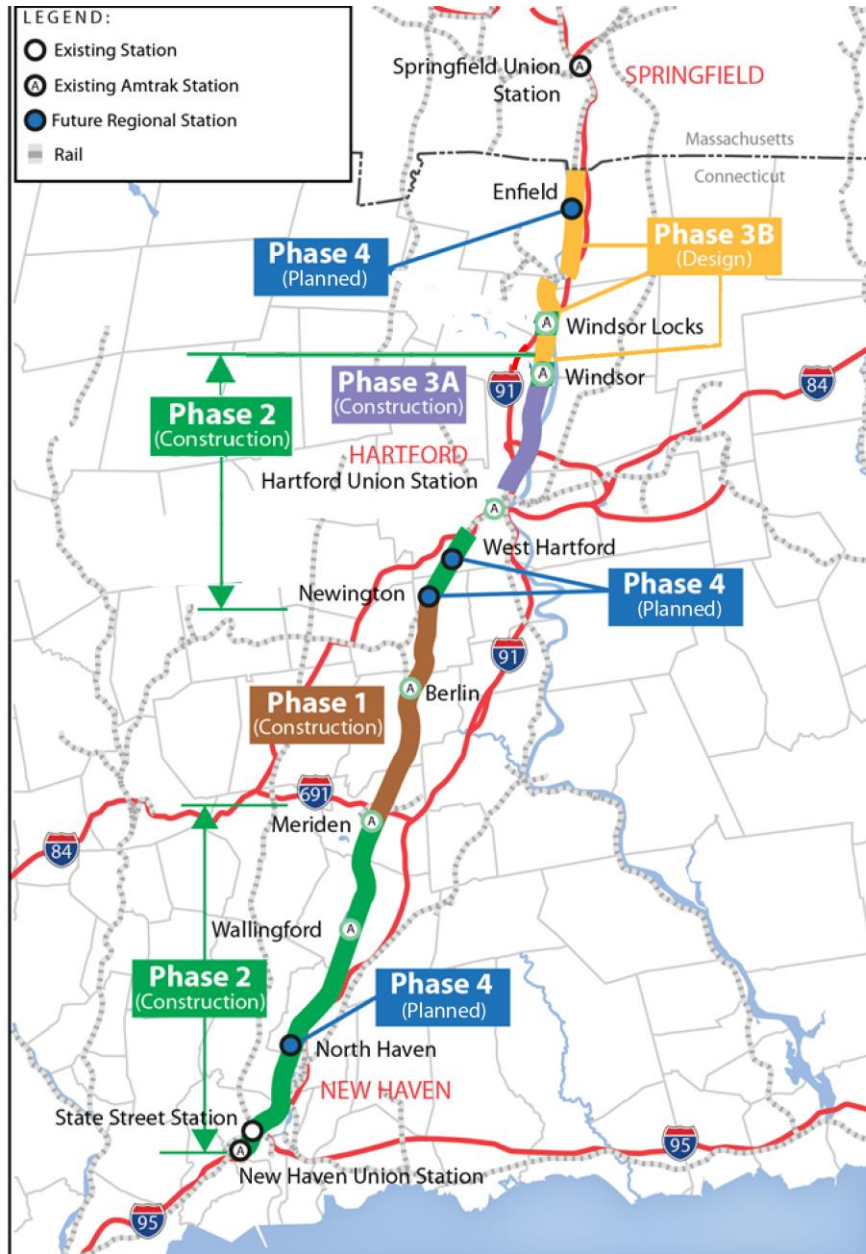
PRESENTATION

- **Robert Yirigian** **NHHS Program Overview**
- **Bart Sweeney** **Main St./Bridge St. Rdwy Improvements**
- **David Geissert** **Pedestrian Bridge at Bridge Street**
- **David Tudryn** **Windsor Locks Station Design**
- **Robert Braren** **Windsor Locks Station Design**
- **Jason Boice** **Rights-of-Way**
- **Bruce Olmstead** **Schedule and Project Cost**
- **Questions and Answers**

About the Hartford Line



Service Launched on June 16th, 2018





CTrail Windsor Locks Station Project

HARTFORD LINE

STATION LOCATION

- Downtown
- Access from Main Street (Rt. 159)

BRIDGE STREET

- Add a Pedestrian Bridge
- 4 Quadrant Gates and Pedestrian Gates

REPLACEMENT OF EXISTING STATION

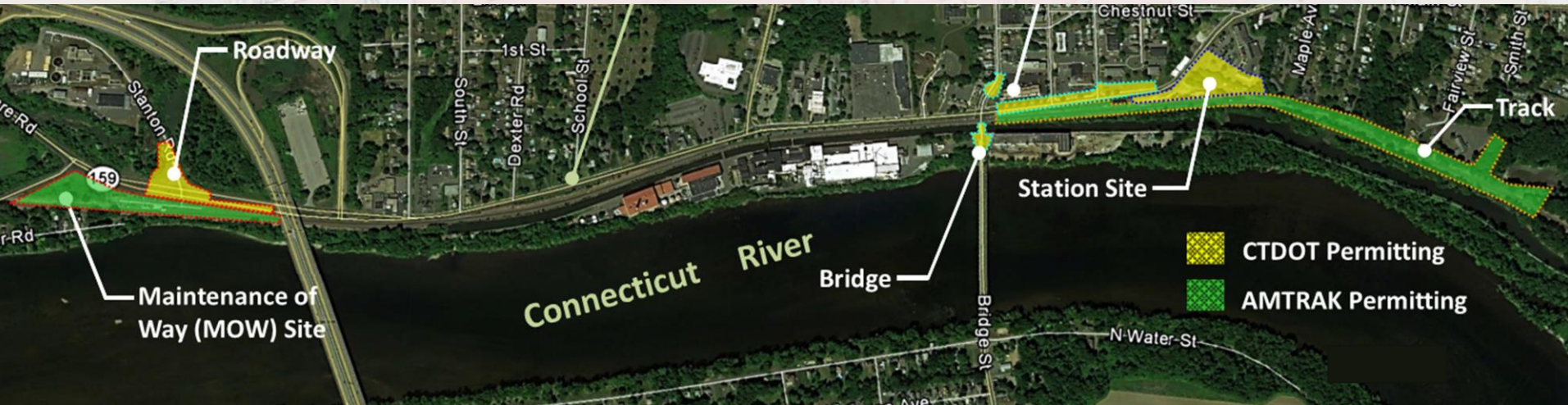
- New Maintenance of Way Site (MOW)
- Realignment of Stanton Road for DPW Access

RECONSTRUCTION OF ROUTE 159

- Main Street from Bridge St to the New Station
- Cul-de-sac Church Street
- Add a multi-use Trail from Station to the Canal Trail

TRACK WORK

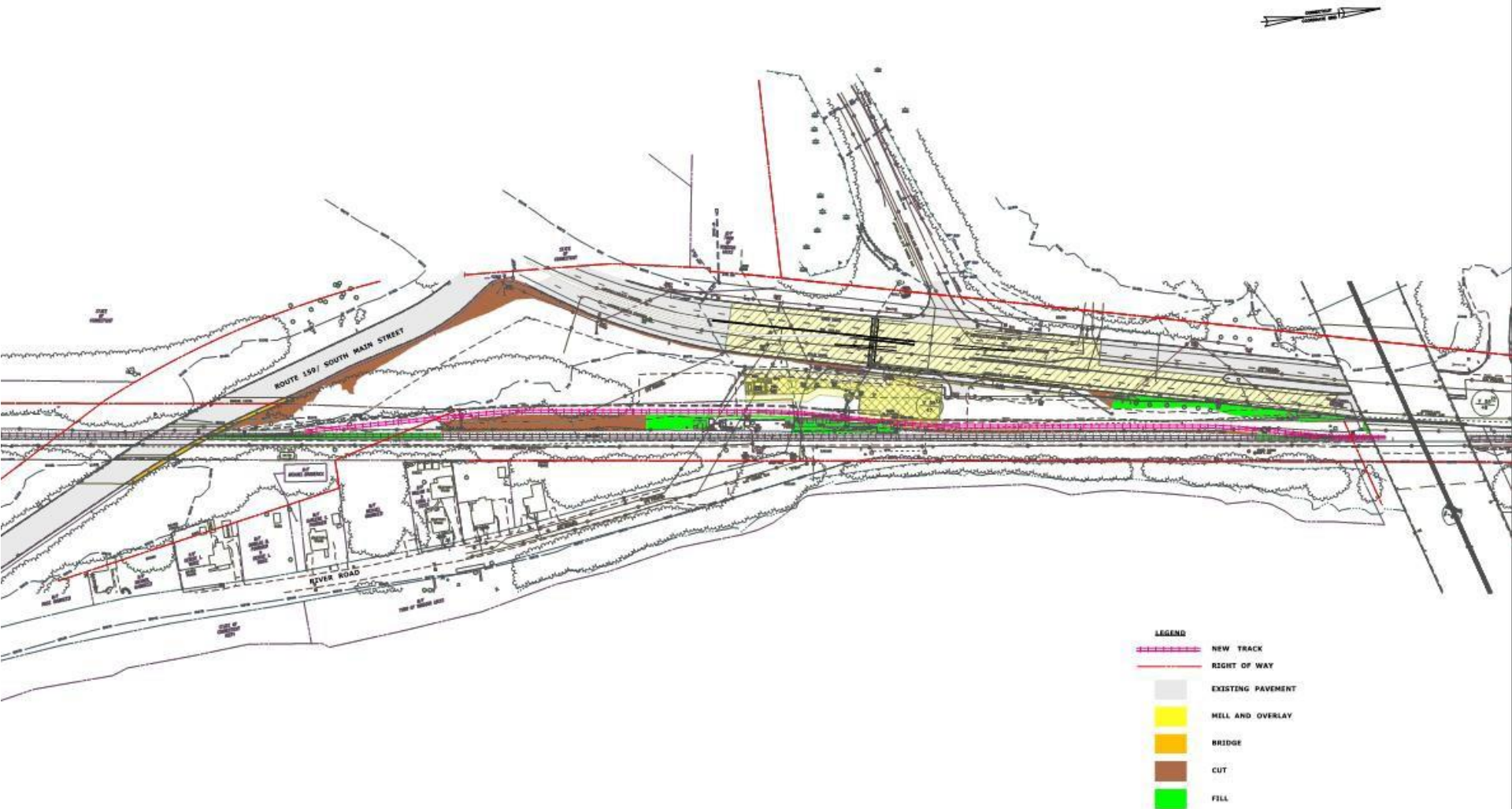
- Second Track from Bridge Street North 5000+/- ft

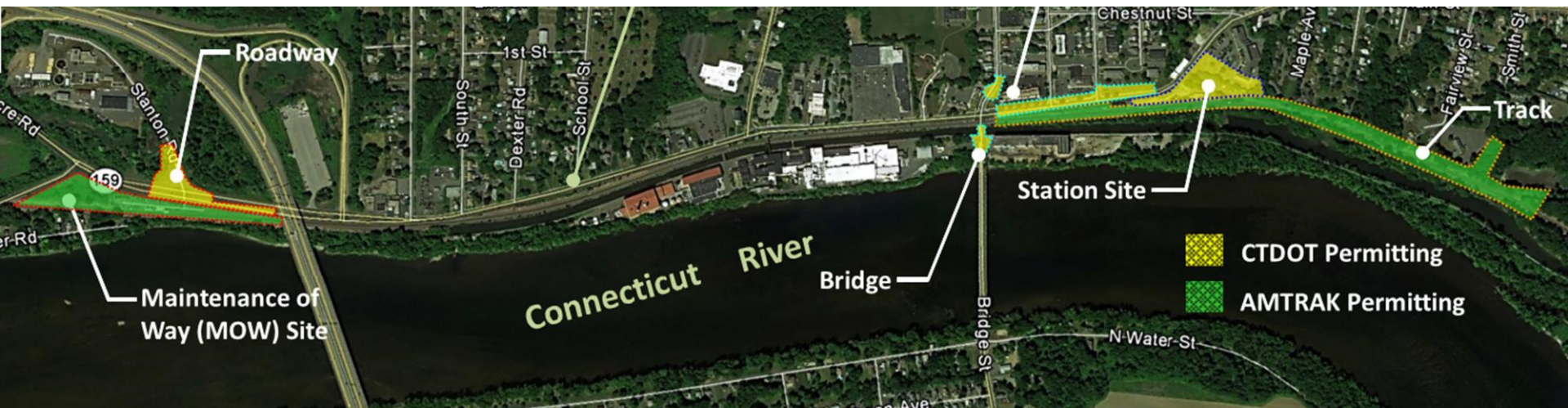


Maintenance of Way (MOW) yard



Maintenance of Way (MOW) yard

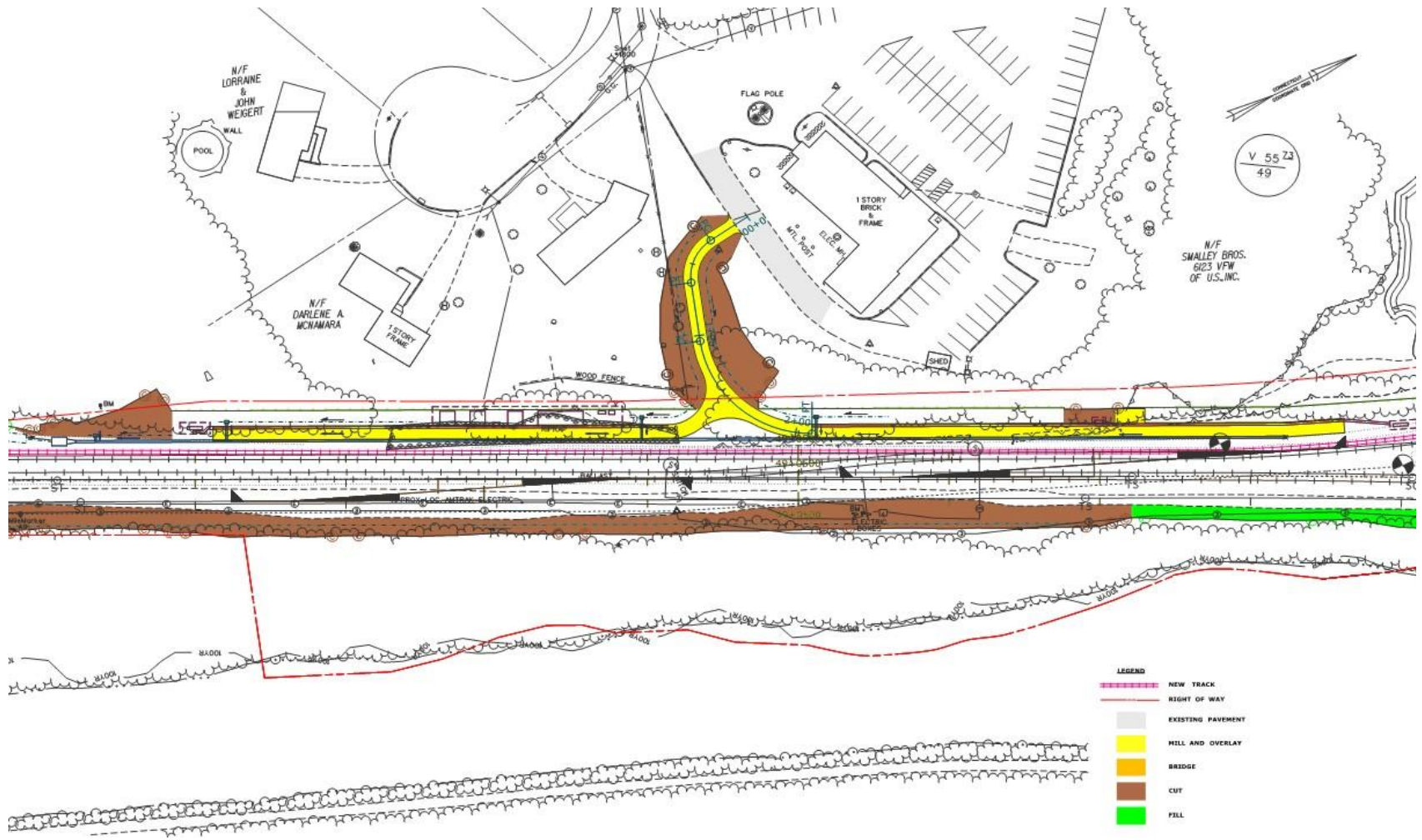


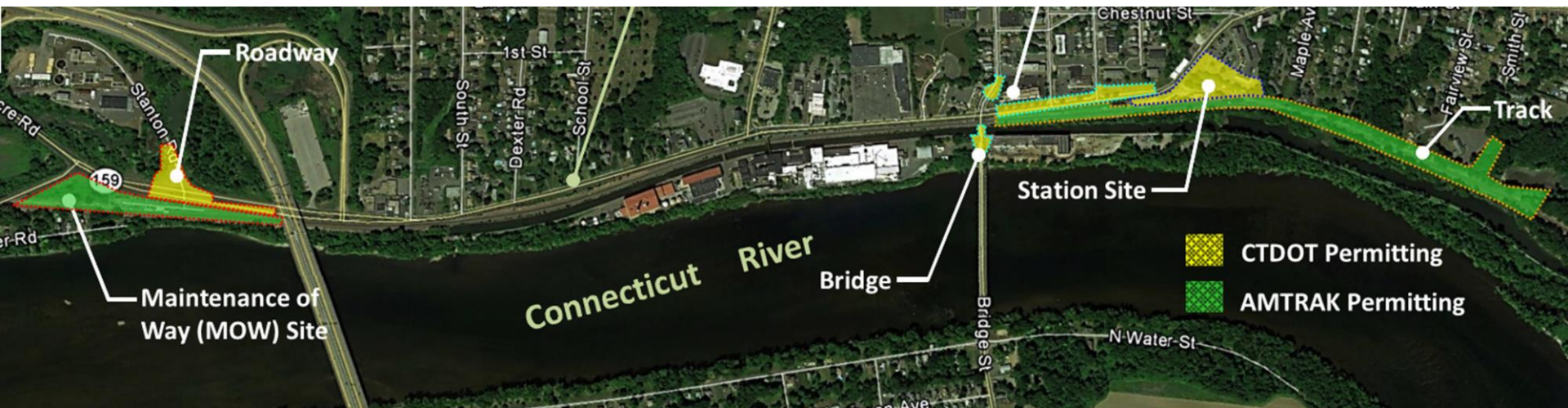


VFW Access Drive



VFW Access Drive





Bridge & Main Street Improvements



Bridge & Main Street Improvements



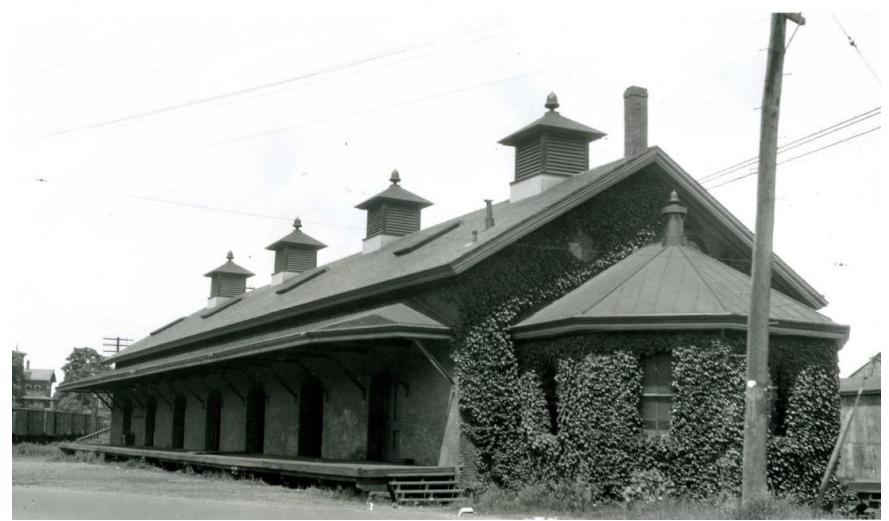
Pedestrian Bridge



- Will carry 10' wide multi-use trail over the Windsor Locks Canal
- Single Span of 63'-7"
- Precast beams with concrete deck slab for uniform walking surface
- 6" curb with open steel railing
- Precast beams will be erected utilizing a crane set up behind the East Abutment during detour of Bridge Street



Photograph of the Windsor Locks, Connecticut, railroad station, taken by Lewis Herbert Benton. (Courtesy Uconn Library)



Photograph of the Windsor Locks, Connecticut, railroad station freight building, courtesy Windsor Locks Historical Society Photo Collection Webpage



Postcard of the 1872-built Windsor Locks, Connecticut, railroad station freight building, courtesy Wikipedia



Photograph of the Windsor Locks, Connecticut, railroad station and renovated freight building, courtesy Windsor Locks Historical Society Photo Collection Webpage

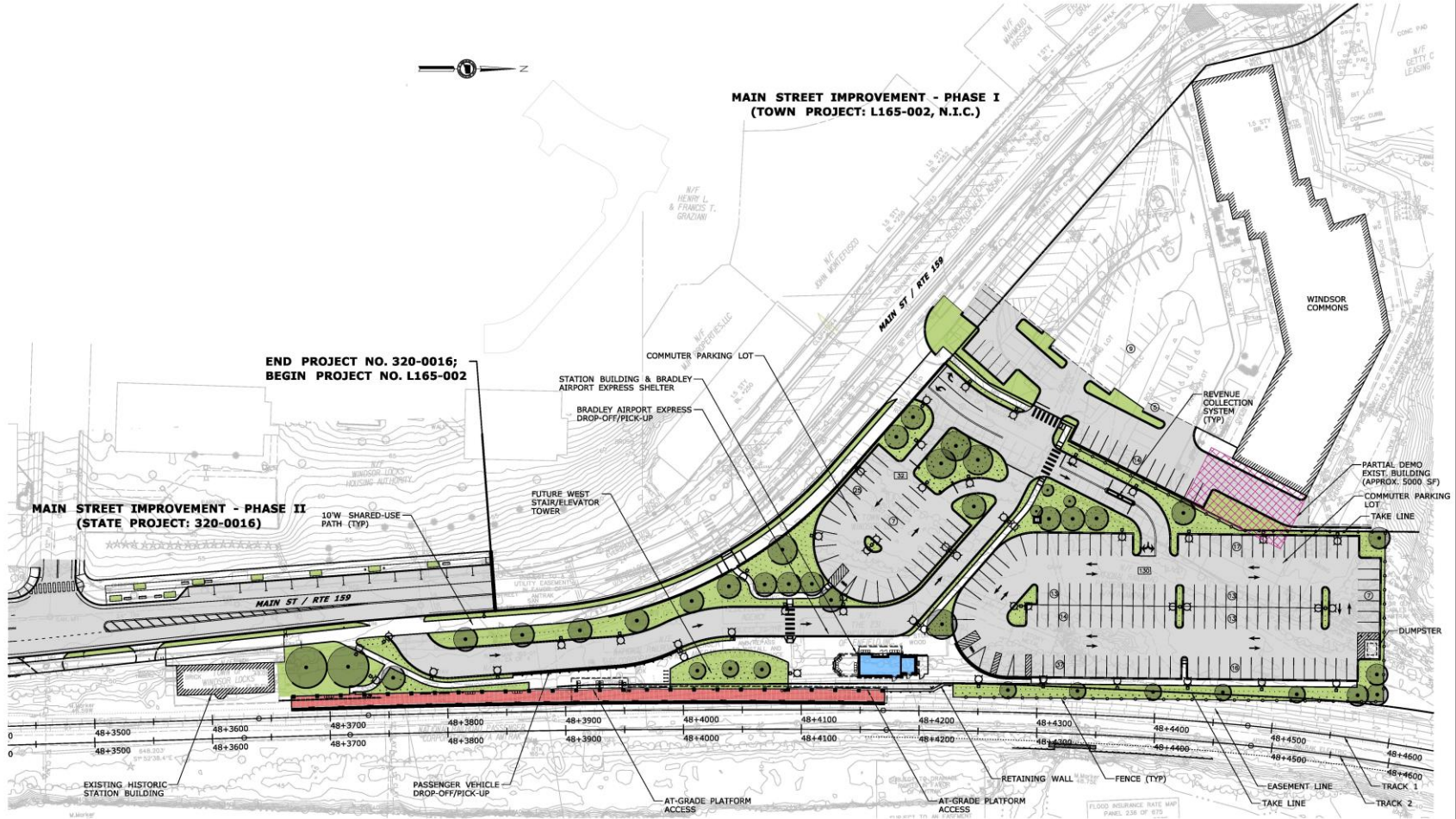




**MAIN STREET IMPROVEMENT - PHASE I
(TOWN PROJECT: L165-002, N.I.C.)**

**END PROJECT NO. 320-0016;
BEGIN PROJECT NO. L165-002**

**MAIN STREET IMPROVEMENT - PHASE II
(STATE PROJECT: 320-0016)**



CONCEPT - 09/17/2019

REV.	DATE	REVISION DESCRIPTION	SHEET NO.

THE INFORMATION, INCLUDING ESTIMATED QUANTITIES OF WORK SHOWN ON THESE SHEETS IS BASED ON LIMITED SURVEY DATA AND IS INTENDED TO BE USED AS A GENERAL GUIDE TO THE CONDITIONS OF ACTUAL QUANTITIES OF WORK WHICH WILL BE REQUIRED.

DESIGNER/DRAWER:
DRAWN BY:
SCALE IN FEET
SCALE 1"=40'



SIGNATURE/BLOCK:
Michael Baker
INTERNATIONAL
920 Enterprise Drive, Suite 201
Rocky Hill, CT 06867
Phone: (860) 563-3044 - MBK@GRINTL.COM

PROJECT TITLE:
WINDSOR LOCKS RAILROAD STATION IMPROVEMENTS

TOWN:
WINDSOR LOCKS

DRAWING TITLE:
STATION PLAN

PROJECT NO.
320-0016

DRAWING NO.
-

SHEET NO.
-







Function

- Acquire all property/property rights necessary for the project.

Statutory References

- State of Connecticut
 - C.G.S. Section 13a-73 & 13a-98e
- Federal
 - Uniform Relocation Assistance and Real Properties Acquisition Act of 1970, as amended.

Property Impacts

- Partial Acquisitions
- Easements
- Construction Easements
- Rights

* Subject to change as design progresses.

ROW Acquisition Process

- Letter of Intent to Acquire
- Valuation
- Offer of Compensation
- Negotiation
- Acquisition
 - Agreement
 - Condemnation

Construction Schedule

Anticipated Start: Late 2020

Anticipated Completion: Late 2022

Anticipated Completion: Late 2023



HARTFORD LINE



Sign Up – Stay Informed

Visit: <http://www.nhhsrail.com/>

Sign up for e-alerts

Like us on Facebook: @NHHSRail

Follow us on Twitter: @NHHSRail





Thank You!