

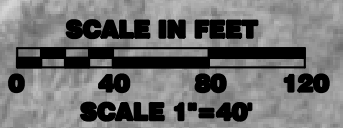
**CONCEPTUAL SITE PLAN
AS PROPOSED BY
BUSWAY WEST**

**PROPOSED PLATFORM
PROPOSED UP & OVER
PROPOSED PLATFORM**

**PROPOSED PARKING
(200 SPACES)**

NOTES:

- THIS STATION IS PROPOSED FOR CONSTRUCTION IN CONJUNCTION WITH THE HARTFORD WEST BUSWAY FROM NEW BRITAIN TO DOWNTOWN HARTFORD. DESIGN OF THE TWO STATIONS WILL HAVE TO BE UNDERTAKEN SIMULTANEOUSLY.
- TWO HIGH-LEVEL PLATFORMS 200 FEET LONG BY 10 FEET WIDE AT A LEVEL BOARDING HEIGHT WITH THE TRAIN ARE PROPOSED WITH A 100 FOOT LONG COVERED CANOPY.
- PEDESTRIAN CROSSING WOULD BE PROVIDED THROUGH AN OVERHEAD ("UP AND OVER") STRUCTURE WITH STAIRS AND ELEVATORS ON EACH PLATFORM.
- PARKING AT THIS STATION WOULD BE FACILITATED THROUGH CONSTRUCTION OF PARKING ON PRIVATELY OWNED PROPERTIES AS SHOWN.
- ISSUES AT THIS STATION:
 - PARKING WOULD REQUIRE ACQUISITION OF PRIVATELY OWNED PROPERTY.
 - PLACEMENT OF THE SOUTHBOUND PLATFORM WOULD REQUIRE CHANGES TO THE BUSWAY DESIGN.

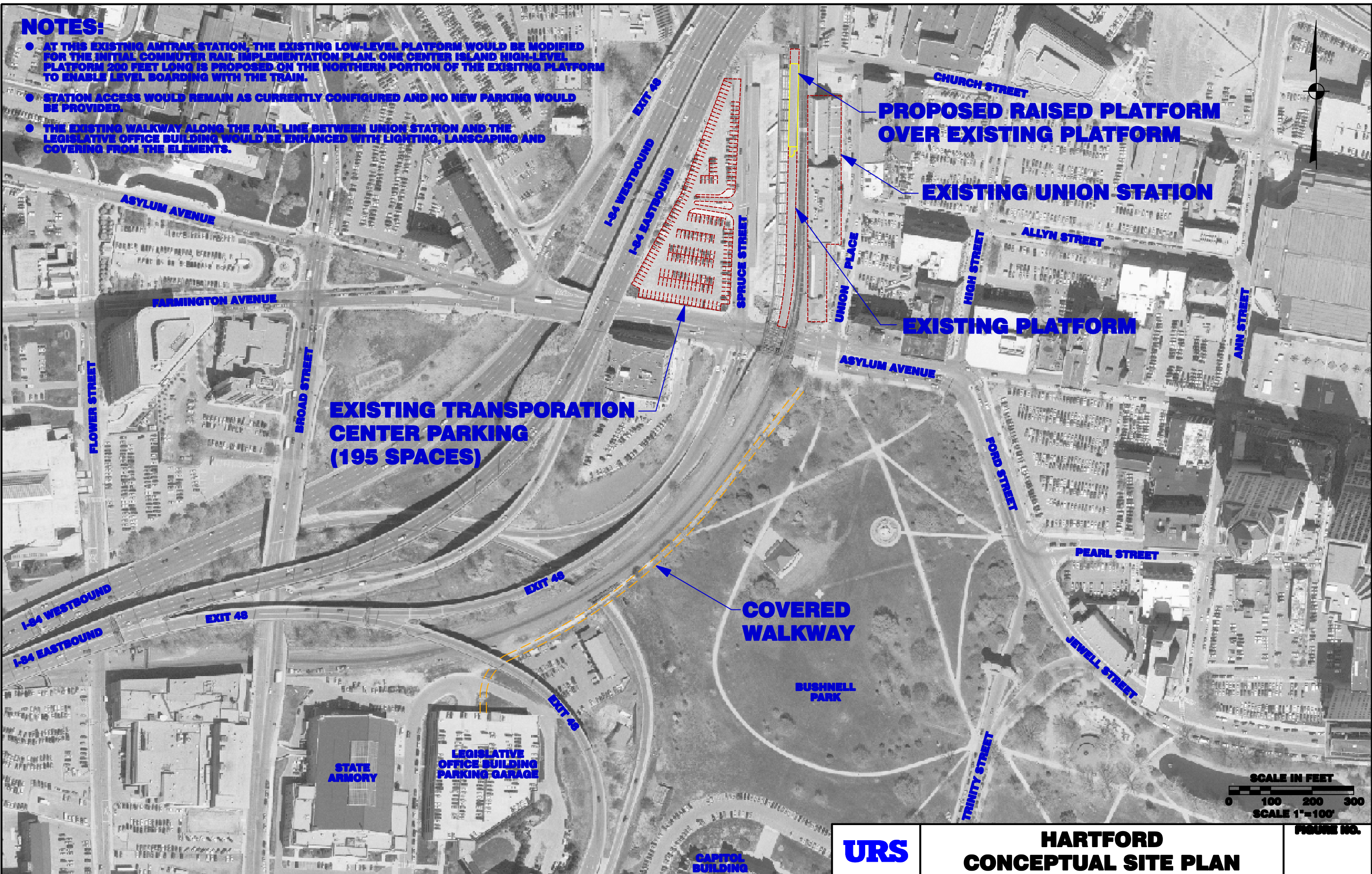


**NEWINGTON
CONCEPTUAL SITE PLAN**

FIGURE NO.

NOTES:

- AT THIS EXISTING AMTRAK STATION, THE EXISTING LOW-LEVEL PLATFORM WOULD BE MODIFIED FOR THE INITIAL COMMUTER RAIL IMPLEMENTATION PLAN. ONE CENTER ISLAND HIGH-LEVEL PLATFORM 200 FEET LONG IS PROPOSED ON THE NORTHERN PORTION OF THE EXISTING PLATFORM TO ENABLE LEVEL BOARDING WITH THE TRAIN.
- STATION ACCESS WOULD REMAIN AS CURRENTLY CONFIGURED AND NO NEW PARKING WOULD BE PROVIDED.
- THE EXISTING WALKWAY ALONG THE RAIL LINE BETWEEN UNION STATION AND THE LEGISLATIVE OFFICE BUILDING WOULD BE ENHANCED WITH LIGHTING, LANDSCAPING AND COVERING FROM THE ELEMENTS.





**EXISTING TOWN PARKING
(120 SPACES)**

PROPOSED UP & OVER

PROPOSED PLATFORM

PROPOSED PLATFORM

**PROPOSED PARKING
STRUCTURE
(266 SPACES ON
3 LEVELS)**

NOTES:

- AT THIS EXISTING AMTRAK STATION, NEW PLATFORMS WOULD BE CONSTRUCTED FOR THE INITIAL COMMUTER RAIL IMPLEMENTATION PLAN. IT IS ANTICIPATED THAT ALL TRAINS ON THE LINE, INCLUDING AMTRAK AND COMMUTER RAIL WOULD UTILIZE THE NEW PLATFORMS.
- TWO HIGH-LEVEL PLATFORMS 200 FEET LONG BY 10 FEET WIDE AT A LEVEL BOARDING HEIGHT WITH THE TRAIN ARE PROPOSED WITH A 100 FOOT LONG COVERED CANOPY.
- PEDESTRIAN CROSSING WOULD BE PROVIDED THROUGH AN OVERHEAD ("UP AND OVER") STRUCTURE WITH STAIRS AND ELEVATORS ON EACH PLATFORM.
- PARKING AT THIS STATION WOULD BE FACILITATED THROUGH THE USE OF EXISTING TOWN OWNED PARKING BEHIND TOWN HALL AND NEWLY CONSTRUCTED PARKING AS SHOWN ON TOWN OWNED PROPERTY.



**WINDSOR
CONCEPTUAL SITE PLAN**

FIGURE NO.