

DANBURY BRANCH IMPROVEMENT PROGRAM TASK 5

ENVIRONMENTAL TECHNICAL MEMORANDUM

STATE PROJECT 302-008



SECTION 15: PUBLIC RECREATIONAL/4(f)/6(f) LANDS

MARCH 2009

SECTION 15. PUBLIC RECREATIONAL/4(f)/6(f) LANDS

INTRODUCTION

This section discusses public recreational lands within the study corridor. Public recreational lands consist of locally, state, and nationally owned parks, open spaces, greenways and trails, and recreational facilities. Section 4(f) and 6(f) lands are described in this section.

Regulatory Context

The following federal laws govern public recreational lands, and are relevant to the project:

Section 4(f) Lands

In accordance with Section 4(f) of the 1966 Federal Aid and Highway Act, special efforts must be made to protect any public park, recreation area, or wildlife/waterfowl refuge from any disturbance or adverse impact as the result of a Department of Transportation project. Furthermore, approval for use of said properties is contingent on a determination that there are no possible alternatives to using the land for the project and that all possible planning has been undertaken to minimize any detrimental effect to the land as the result of the project. Section 4(f) sites are considered “potential” until they are impacted and confirmed to be eligible by the lead federal agency.

Section 6(f) Lands

According to Section 6(f) of the Land and Water Conservation Fund Act, “any lands purchased or developed with LWCFA funds cannot be ‘converted’ to another use for purposes inconsistent with the Act without being replaced with other land that is of equal value to the land proposed for conversion.” Section 6(f) lands have been identified on Sheets 1-12.

EXISTING CONDITIONS

Potential Section 4(f) Lands

Numerous municipally and state owned public recreational lands lie within the study area for this project, defined as a corridor 500 feet on either side of the railroad track centerline. The following list identifies these properties, their size, and their location. They are sequentially listed by town from south to north. Note: Privately owned recreational properties open to the public with or without a fee located within the study area (e.g. Boy Scouts, WMCA, Land Trusts, etc.) are identified on the maps but not included on this list. Refer to Sheets 1-14

Norwalk

1) State Heritage Park, 7.4 acres, waterfront on the Norwalk River east of the railroad tracks bordering Washington Street to the south and Water Street to the west. Sheet 1.

- 2) Oyster Shell Park, 10.0 acres, waterfront on the Norwalk River east of the railroad tracks, just south of I-95. Map Sheet 1.
- 3) Mathew's Park, 19.7 acres, located just south of Butler Street, west of Crescent Street. Sheet 1.
- 4) Mill Hill Park, 3.6 acres, located across the Norwalk River from railroad tracks between Smith and Wall Streets. Sheet 1.
- 5) Klondike Park, .04 acre, located across the Norwalk River from railroad tracks, south of Wall Street. Sheet 1.
- 6) Irving Freeze Park, 0.7 acre, also across the river from the tracks, south of Burnell Street. Sheet 1.
- 7) Riverside Park, 0.4 acre, located on both sides of the Norwalk River, south of Cross Street. Sheet 1.
- 8) Willie Morrer Park, 0.3 acre, on the corner of West Main Street and Holmes Street. Sheet 1.

Wilton

- 1) Schneck's Island Park, 16.0 acres, located within the study corridor between the tracks and the Norwalk River south of the intersection of River Road and Old Ridgefield Road. Sheet 3.
- 2) Merwin Meadows Park, 17.6 acres, located east of the railroad tracks, across from Wilton Station, on both sides of the Norwalk River, north of Ridgefield Road. Sheet 3.
- 3) Lover's Lane Open Space, 27.1 acres, abutting Merwin Meadows Park to the south, on the east side of the railroad tracks, south of School Road. Sheet 3.
- 4) Mather Street Open Space, 72 acres, located at mile post 11, west of railroad tracks near intersection of Old Mill Road and Mather Street. Sheet 4.

Ridgefield

- 1) Old Branchville School Site, 11.6 acres, located west of the railroad tracks at Milepost 13 between Florida Road and US Route 7. Sheet 5.
- 2) Norwalk River Flood Control Site #3, 1.5 acres, State owned property just south of milepost 15, abutting and west of railroad tracks. Sheet 5.

Redding

- 1) Topstone Park, 267.4 acres, located west of the railroad tracks off of Old Redding Road. Sheet 5.
- 2) Bogus Brook Preserve, 36.4 acres, at milepost 18, abutting and west of the tracks. Sheet 6.

3) Plymouth Realty Setaside, 4.4 acres, located between railroad tracks and Danbury Road, just south of milepost 18. Sheet 6.

Bethel, Danbury

There are no public recreational properties located within the study area in the towns of Bethel and Danbury.

Brookfield

1) Brookfield Municipal Center Park, 44.4 acres, located between Pocono Road and US Route 7 just South of Silvermine Road. Sheet 10.

New Milford

1) Harrybrook Park, 54.9 Acres, Abutting and west of railroad tracks at study milepost #35, south of Lanesville Road. Sheet 11.

2) Lover's Leap State Park, 170.4 acres, abutting and east of railroad tracks, west of Grove Street. Sheets 11 and 12.

3) Picket District Road Ball Fields, 29.5 acres, located just north of Study milepost #36, abutting and west of railroad tracks, east of Picket District Road. Sheet 12.

4) Addis Park, 2.6 acres, located between Grove Street and the Housatonic River, across the river from the tracks. Sheet 12.

5) Town Open Space aka, Hidden Treasures Park, 14.8 acres, located at the southern end of West Street between the railroad tracks and the Housatonic River. Sheet 12.

6) Young's Field, 6.5 acres, located at the corner of Bridge Street and Young's Field Road. Sheet 12.

Section 6 (f) Lands

The following three properties are Section 6(f) lands, sections of which lie within the study area.

Norwalk

1) Oyster Shell Park, 10.0 acres, waterfront on the Norwalk River east of the railroad tracks, just south of I-95. Sheet 1.

2) Mathew's Park, 19.7 acres, located just south of Butler Street, west of Crescent Street. Sheet 1.

Redding

1) Bogus Brook Preserve, 36.4 acres, at milepost 18, abutting and west of the tracks. Sheet 6.

REFERENCES

The original data source was the CT DEP GIS Data website located at <http://www.ct.gov/dep/cwp/view.asp?A=2698&Q=322898>.

The CT DEP and the CT Office of Policy and Management produced the Open Space and Recreation Property Data sets. From this website, the data sets 1) DEP Property and 2) Municipal Open Space were downloaded.

As the original data sets were created in 1994 and last updated in 1997, the current status of the data had to be verified. The following town officials were contacted for current information:

Norwalk: Michael Moccia, Director, Recreation Dept.

Wilton: Steve Pierce, Director, Recreation Dept.

Michelle Guidera, Assessor's Office and

Patrice Gillespie at the Conservation Commission

Ridgefield: Paul Roche, Director, Parks and recreation

Redding: Rob Blick, Director, Recreation Dept.

Joanne Brooks, Land Use Coordinator

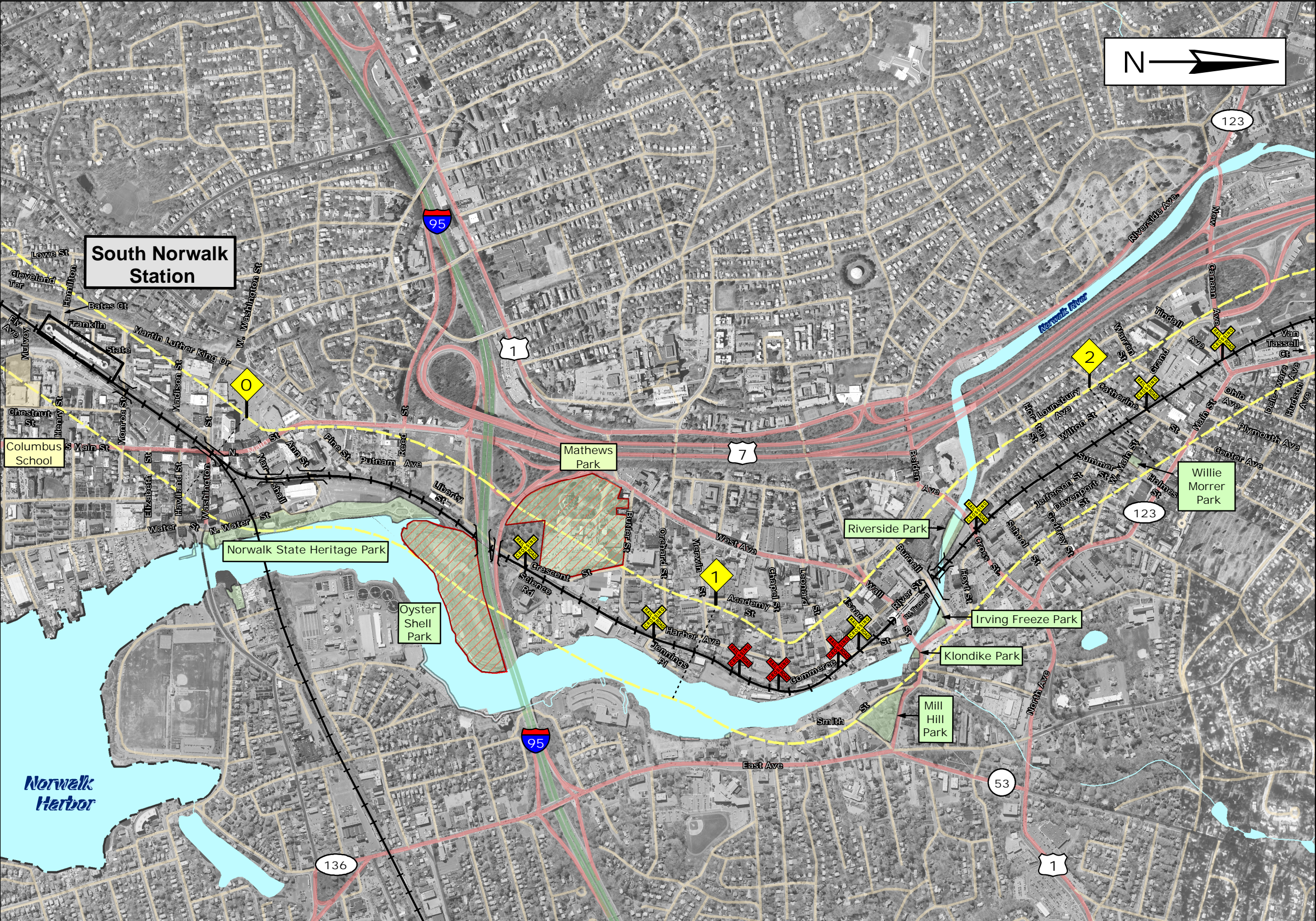
Bethel: Janet Beott, Recreation Dept.

Danbury: Nicholas Kaplanis, Director, Recreation dept.

Brookfield: Dennis Dipinto, Director, Parks and Recreation dept.

New Milford: Dan Calhoun, Director, Parks and Rec.

The towns of Redding and Bethel contracted with Planimetrix Corp. to produce online GIS maps which included Land Use and Town Open Space, including a layer for municipal recreational property. These were also used to update the data.



Legend

Railroad Track

1000 Foot Study Corridor

Town Boundary

Railroad Station

Proposed Location of New Railroad Station

Railroad Milepost Marker

Railroad Crossing

Private Railroad Crossing

Interstate Highway

US Highway

State Road

Local Road

Public Recreational Lands

Municipal

Parks

General Recreation

Conservation

Preservation

School

ConnDEP State Property

Flood Control

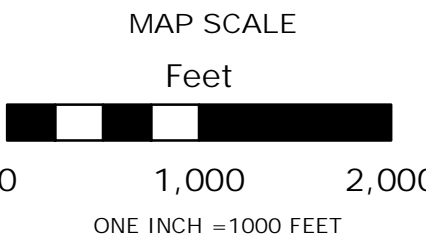
State Park Scenic Reserve

Public Fishing Access

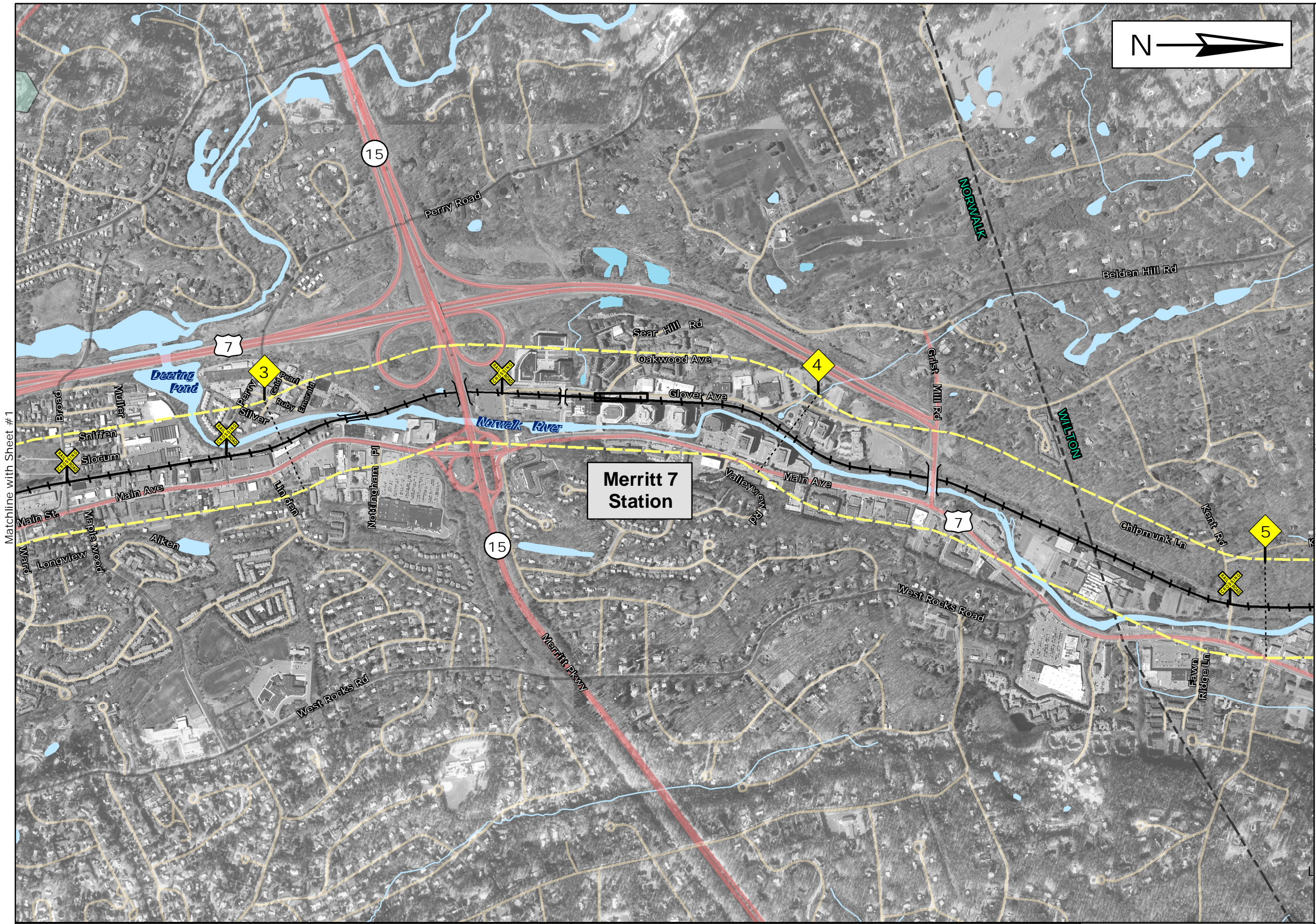
Section 6 (f) Lands

Data Sources:

Public Recreational Lands: CT DEP
Roads: CT DEP- Updated by URS
RR Track: CT DEP
Town Boundary: CT DEP
Hydrography: CT DEP, Updated by URS
RR Milepost Markers and
Grade Crossings: Metro-North
Track Charts



| | | | | |
|--|--|---|--|---------------------|
| PROJECT TITLE: DANBURY BRANCH IMPROVEMENT PROGRAM & ELECTRIFICATION ENVIRONMENTAL IMPACT STATEMENT | STATE OF CONNECTICUT DEPARTMENT OF TRANSPORTATION |  | TOWN(S): NORWALK | PROJECT NO: 302-008 |
| | | | MAP TITLE: PUBLIC RECREATIONAL/ 6(F)/POTENTIAL 4(F) PROPERTIES | MAP NO: 5.2.12 |
| GIS MAPPING BY: URS CORPORATION DATE: 02/2009 | | | SHEET NO: 1 OF 14 | |



Legend

Railroad Track

1000 Foot Study Corridor

Town Boundary

Railroad Station

Proposed Location of New Railroad Station

Railroad Milepost Marker

Railroad Crossing

Private Railroad Crossing

Interstate Highway

US Highway

State Road

Local Road

Public Recreational Lands

Municipal

Parks

General Recreation

Conservation

Preservation

School

ConnDEP State Property

Flood Control

State Park Scenic Reserve

Public Fishing Access

Section 6 (f) Lands

Data Sources:

Public Recreational Lands: CT DEP
Roads layer: CT DEP, updated by URS
RR Track: CT DEP
Town Boundary: CT DEP
Hydrography: CT DEP, updated by URS
RR Milepost Markers and
Grade Crossings: Metro-North


Track Charts

MAP SCALE

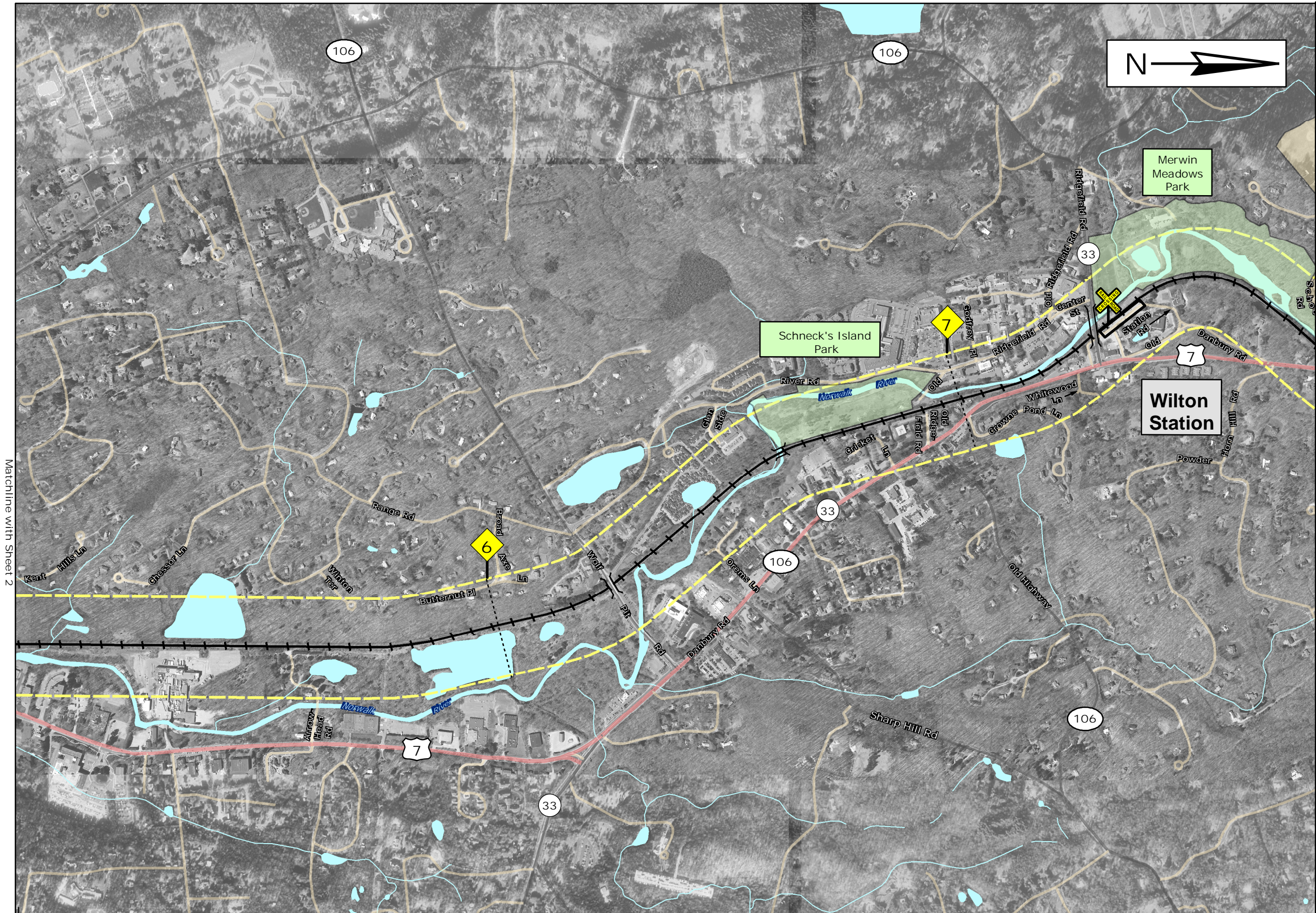
Feet

01,0002,000

ONE INCH =1000 FEET

| | | | | |
|--|--|---|--|-------------------------------|
| PROJECT TITLE: DANBURY BRANCH IMPROVEMENT PROGRAM & ELECTRIFICATION ENVIRONMENTAL IMPACT STATEMENT | STATE OF CONNECTICUT DEPARTMENT OF TRANSPORTATION |  | TOWN(S): NORWALK, WILTON | PROJECT NO: 302-008 |
| | | | MAP TITLE: PUBLIC RECREATIONAL/ 6(F)/POTENTIAL 4(F) PROPERTIES | MAP NO: 5.2.12 |
| | | | | SHEET NO: 2 OF 14 |

GIS MAPPING BY: URS CORPORATIONDATE: 10/2008



Legend

Railroad Track

1000 Foot Study Corridor

Town Boundary

Railroad Station

Proposed Location of New Railroad Station

Railroad Milepost Marker

Railroad Crossing

Private Railroad Crossing

Interstate Highway

US Highway

State Road

Local Road

Public Recreational Lands

Municipal

Parks

General Recreation

Conservation

Preservation

School

ConnDEP State Property

Flood Control

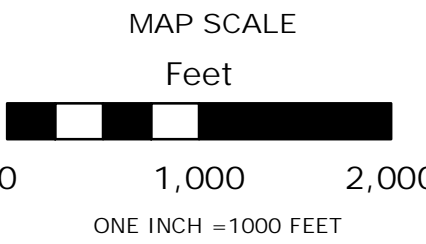
State Park Scenic Reserve

Public Fishing Access

Section 6 (f) Lands

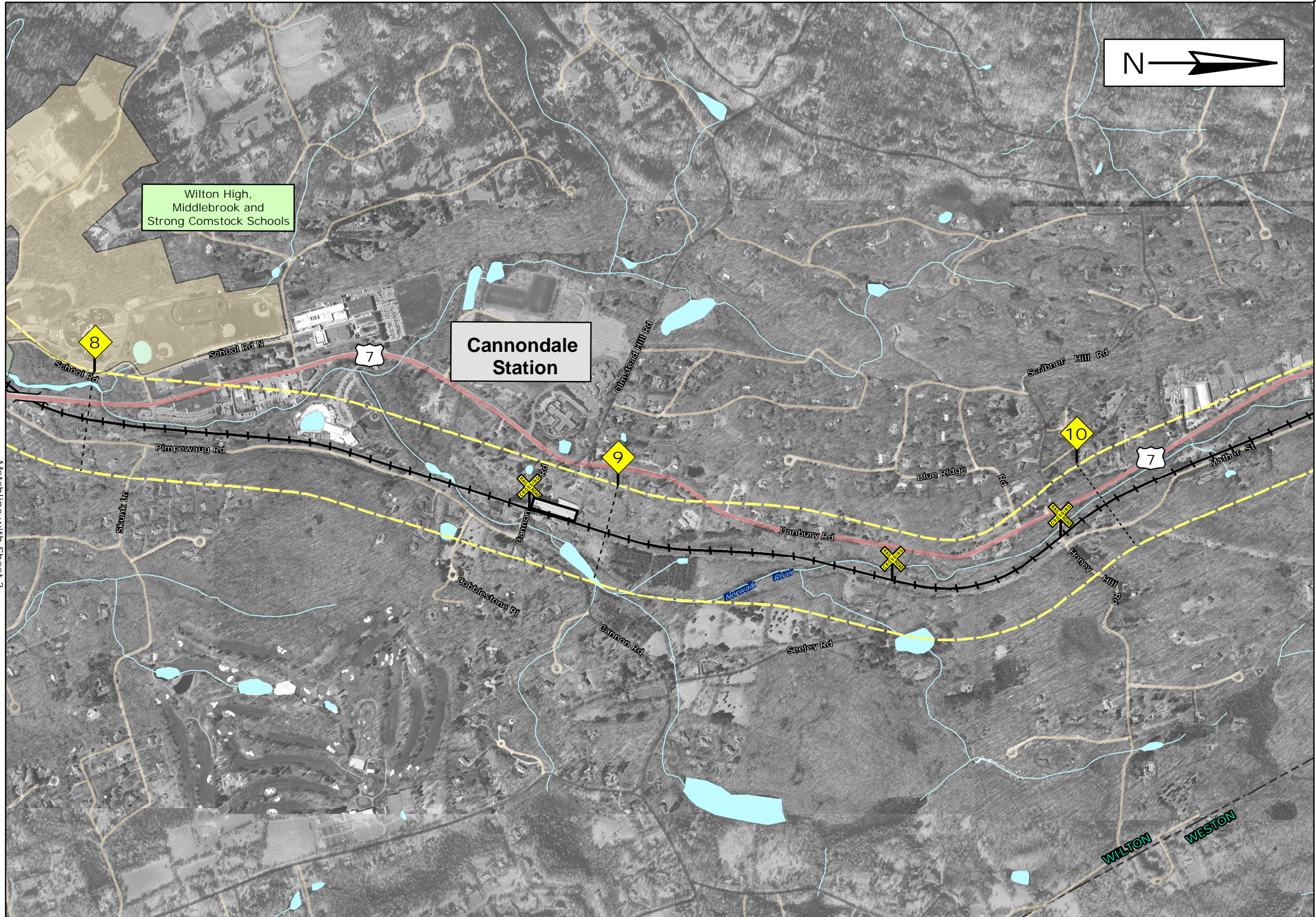
Data Sources:

Public Recreational Lands: CT DEP
Roads: CT DEP, updated by URS
RR Track: CT DEP
Town Boundary: CT DEP
Hydrography: CT DEP, updated by URS
RR Milepost Markers and
Grade Crossings: Metro-North
Track Charts



| | | | | | |
|--|--|--|---|--|---------------------|
| PROJECT TITLE: DANBURY BRANCH IMPROVEMENT PROGRAM & ELECTRIFICATION ENVIRONMENTAL IMPACT STATEMENT | | STATE OF CONNECTICUT DEPARTMENT OF TRANSPORTATION |  | TOWN(S): WILTON | PROJECT NO: 302-008 |
| GIS MAPPING BY: URS CORPORATION DATE: 02/2009 | | | | MAP TITLE: PUBLIC RECREATIONAL/ 6(F)/POTENTIAL 4(F) PROPERTIES | MAP NO: 5.2.12 |
| | | | | | SHEET NO: 3 OF 14 |





Legend

- Railroad Track
- 1000 Foot Study Corridor
- Town Boundary
- Railroad Station
- Proposed Location of New Railroad Station
- Railroad Milepost Marker
- Railroad Crossing
- Private Railroad Crossing
- Interstate Highway
- US Highway
- State Road
- Local Road

Public Recreational Lands

Municipal

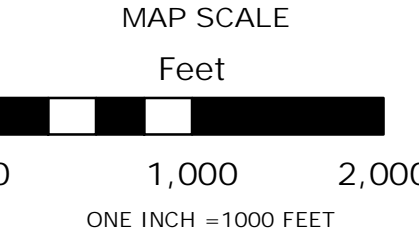
- Parks
- General Recreation
- Conservation
- Preservation
- School

ConnDEP State Property

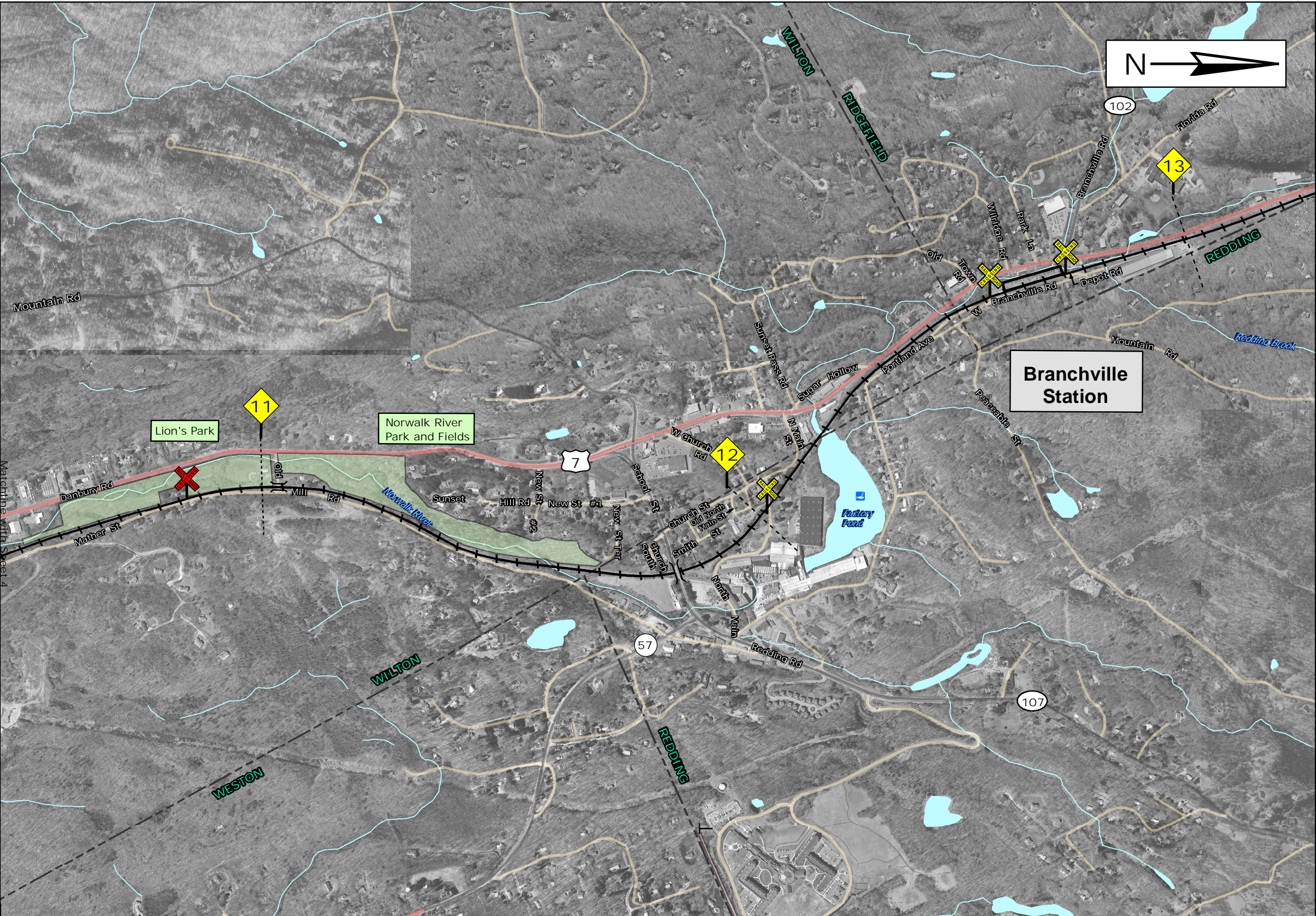
- Flood Control
- State Park Scenic Reserve
- Public Fishing Access
- Section 6 (f) Lands

Data Sources:

Public Recreational Lands: CT DEP
Roads: CT DEP, updated by URS
RR Track: CT DEP
Town Boundary: CT DEP
Hydrography: CT DEP, updated by URS
RR Milepost Markers and Grade Crossings: Metro-North Track Charts



| | | | | |
|---|--|---|--|------------------------|
| PROJECT TITLE: DANBURY BRANCH IMPROVEMENT PROGRAM & ELECTRIFICATION ENVIRONMENTAL IMPACT STATEMENT | STATE OF CONNECTICUT DEPARTMENT OF TRANSPORTATION |  | TOWN(S): WILTON, WESTON | PROJECT NO: 302-008 |
| | | | MAP TITLE: PUBLIC RECREATIONAL/ 6(F)/POTENTIAL 4(F) PROPERTIES | MAP NO: 5.2.12 |
| GIS MAPPING BY: URS CORPORATION DATE: 02/2009 | | | | SHEET NO: 4 OF 14 |



Legend

- Railroad Track
- 1000 Foot Study Corridor
- Town Boundary
- Railroad Station
- Proposed Location of New Railroad Station
- Railroad Milepost Marker
- Railroad Crossing
- Private Railroad Crossing
- Interstate Highway
- US Highway
- State Road
- Local Road

Public Recreational Lands

Municipal

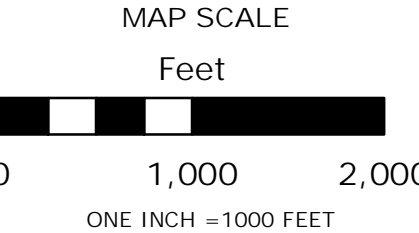
- Parks
- General Recreation
- Conservation
- Preservation
- School

ConnDEP State Property

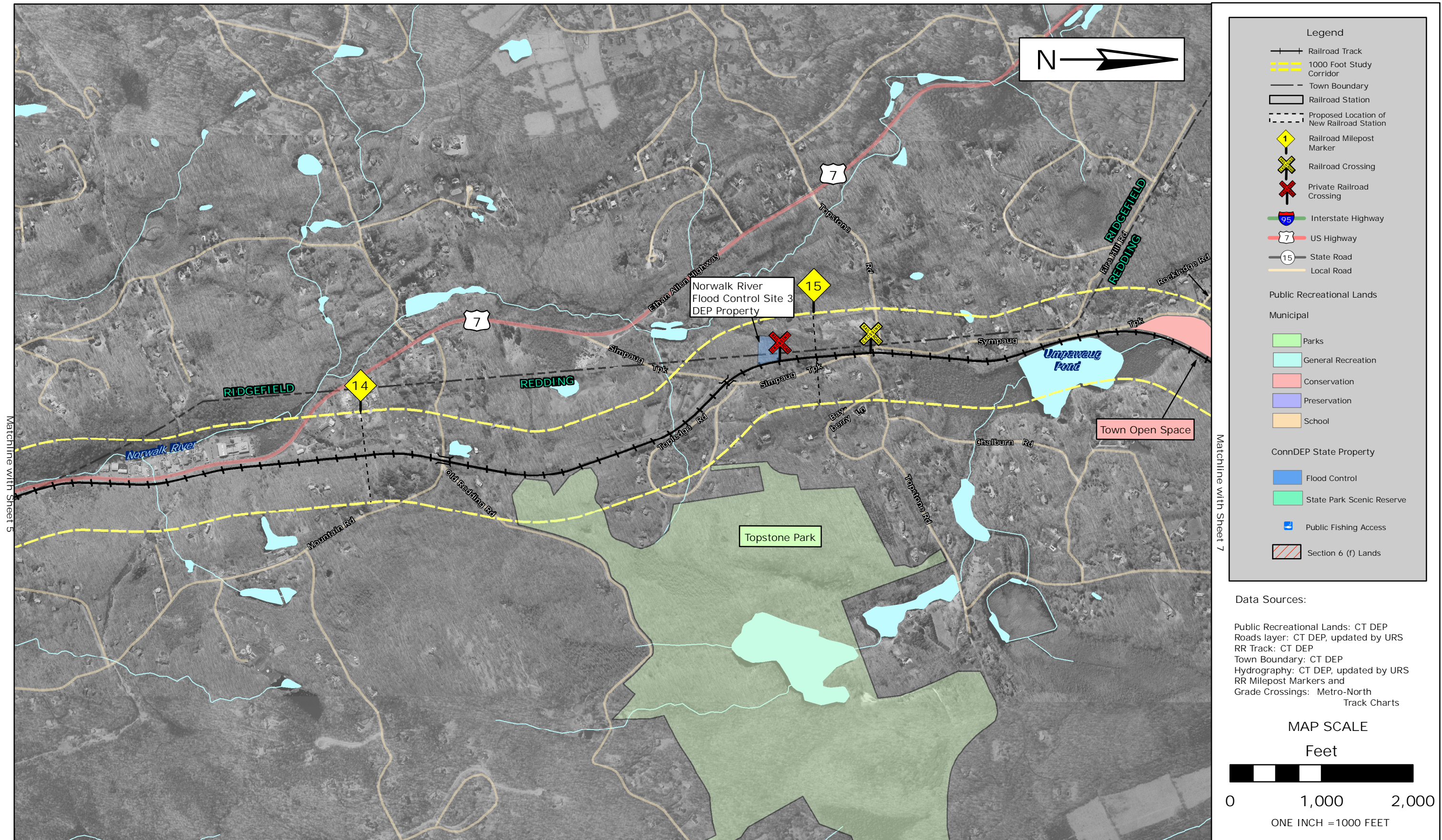
- Flood Control
- State Park Scenic Reserve
- Public Fishing Access
- Section 6 (f) Lands


Data Sources:

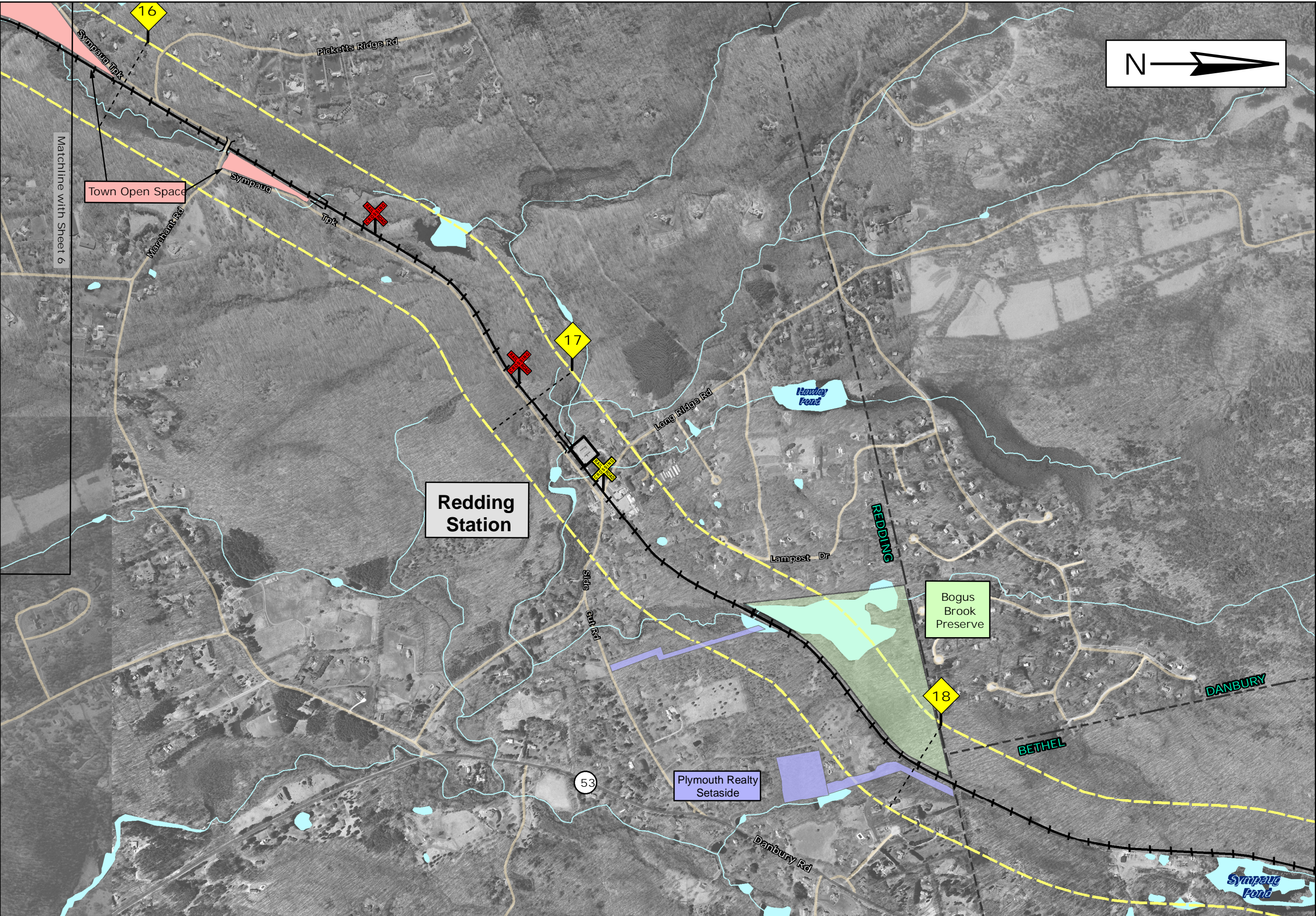
Public Recreational Lands: CT DEP
Roads layer: CT DEP, updated by URS
RR Track: CT DEP
Town Boundary: CT DEP
Hydrography: CT DEP, updated by URS
RR Milepost Markers and
Grade Crossings: Metro-North
Track Charts



| | | | |
|--|--|---|------------------------|
| PROJECT TITLE: DANBURY BRANCH IMPROVEMENT PROGRAM & ELECTRIFICATION ENVIRONMENTAL IMPACT STATEMENT | STATE OF CONNECTICUT DEPARTMENT OF TRANSPORTATION | TOWN(S): WILTON, WESTON, RIDGEFIELD, REDDING | PROJECT NO: 302-008 |
| | | | MAP NO: 5.2.12 |
| GIS MAPPING BY: URS CORPORATION DATE: 02/2009 | | MAP TITLE: PUBLIC RECREATIONAL/6(F)/POTENTIAL 4(F) PROPERTIES | SHEET NO: 5 OF 14 |
| | | | |



| | | | | | |
|--|--|--|---|--|------------------------|
| PROJECT TITLE: DANBURY BRANCH IMPROVEMENT PROGRAM & ELECTRIFICATION ENVIRONMENTAL IMPACT STATEMENT | | STATE OF CONNECTICUT DEPARTMENT OF TRANSPORTATION |  | TOWN(S): RIDGEFIELD, REDDING | PROJECT NO: 302-008 |
| GIS MAPPING BY: URS CORPORATION DATE: 02/2009 | | | | MAP TITLE: PUBLIC RECREATIONAL/ 6(F)/POTENTIAL 4(F) PROPERTIES | MAP NO: 5.2.12 |
| | | | | | SHEET NO: 6 OF 14 |



Legend

- Railroad Track
- 1000 Foot Study Corridor
- Town Boundary
- Railroad Station
- Proposed Location of New Railroad Station
- Railroad Milepost Marker
- Railroad Crossing
- Private Railroad Crossing
- Interstate Highway
- US Highway
- State Road
- Local Road

Public Recreational Lands

Municipal

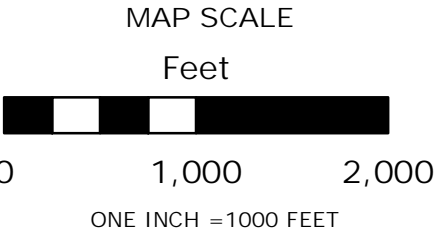
- Parks
- General Recreation
- Conservation
- Preservation
- School

ConnDEP State Property

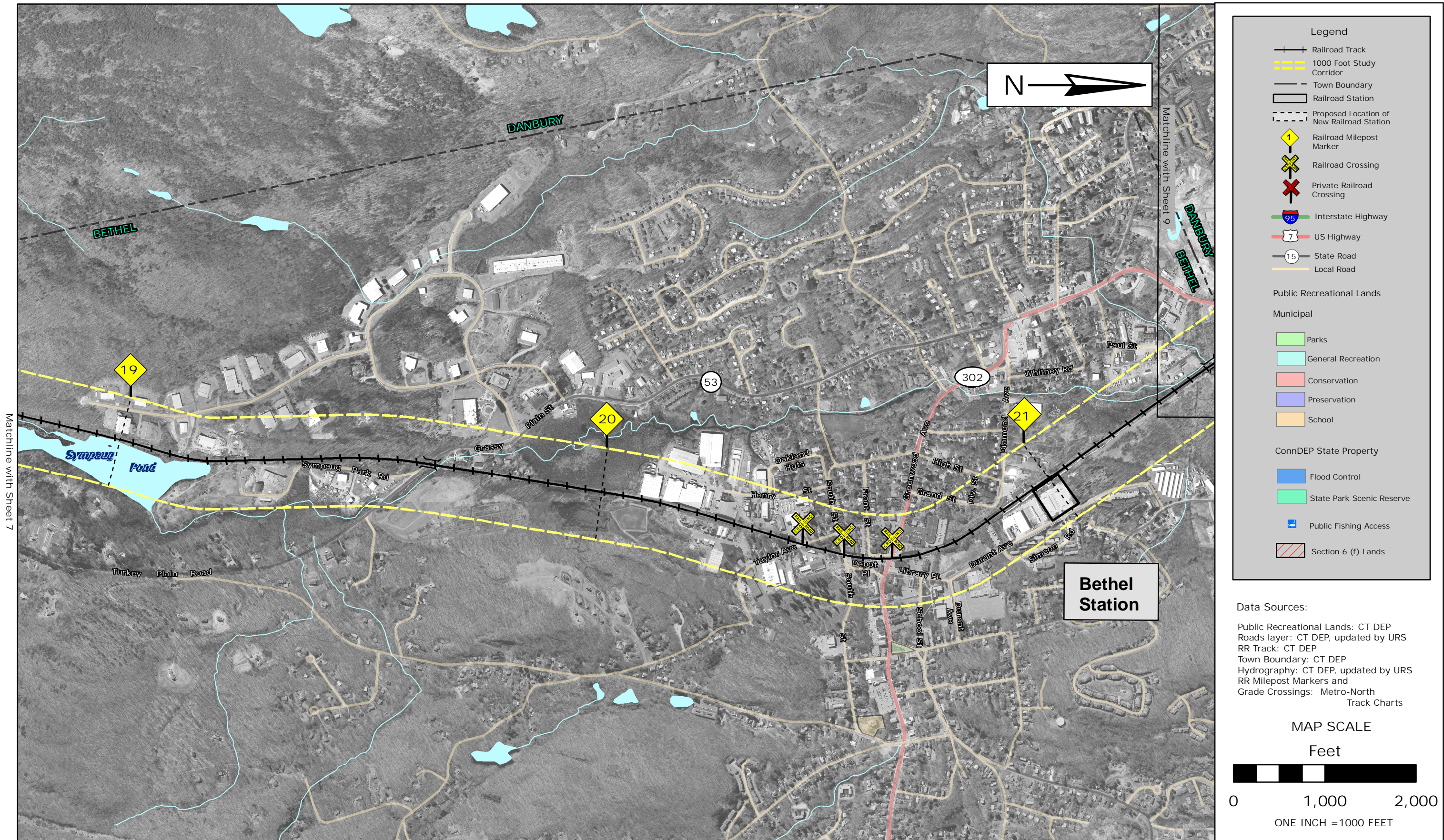
- Flood Control
- State Park Scenic Reserve
- Public Fishing Access
- Section 6 (f) Lands

Data Sources:

Public Recreational Lands: CT DEP
Roads layer: CT DEP, updated by URS
RR Track: CT DEP
Town Boundary: CT DEP
Hydrography: CT DEP, updated by URS
RR Milepost Markers and Grade Crossings: Metro-North Track Charts



| | | | | | |
|--|--|--|---|--|------------------------|
| PROJECT TITLE: DANBURY BRANCH IMPROVEMENT PROGRAM & ELECTRIFICATION ENVIRONMENTAL IMPACT STATEMENT | | STATE OF CONNECTICUT DEPARTMENT OF TRANSPORTATION |  | TOWN(S): REDDING, BETHEL, DANBURY | PROJECT NO: 302-008 |
| GIS MAPPING BY: URS CORPORATION DATE: 02/2009 | | | | MAP TITLE: PUBLIC RECREATIONAL/ 6(F)/POTENTIAL 4(F) PROPERTIES | MAP NO: 5.2.12 |
| | | | | | SHEET NO: 7 OF 14 |



Legend

- Railroad Track
- 1000 Foot Study Corridor
- Town Boundary
- Railroad Station
- Proposed Location of New Railroad Station
- Railroad Milepost Marker
- Railroad Crossing
- Private Railroad Crossing
- Interstate Highway
- US Highway
- State Road
- Local Road

Public Recreational Lands

Municipal

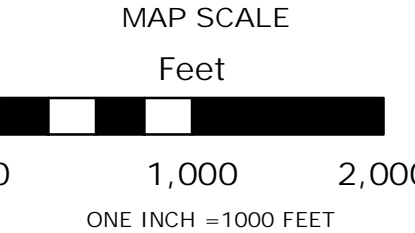
- Parks
- General Recreation
- Conservation
- Preservation
- School

ConnDEP State Property

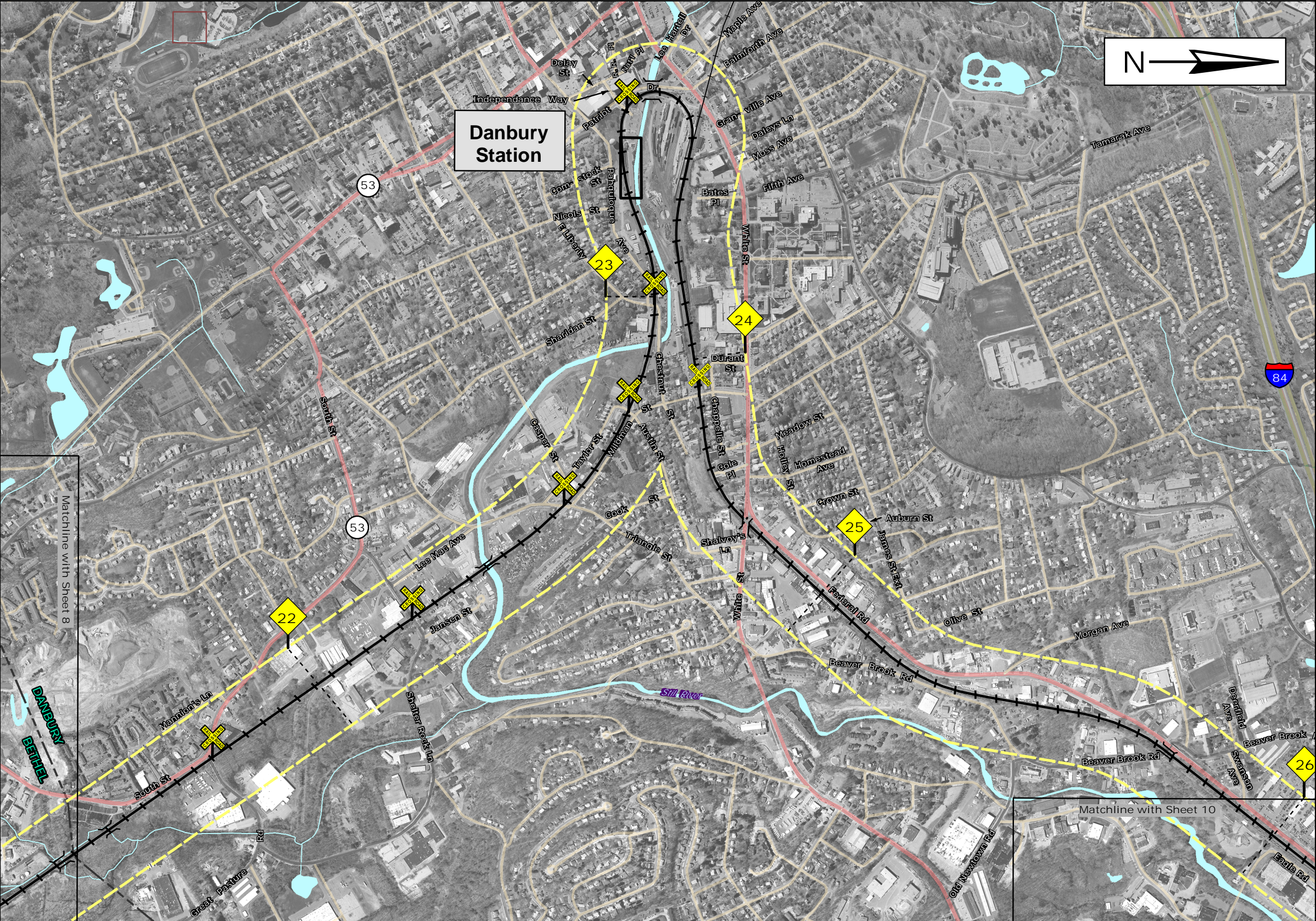
- Flood Control
- State Park Scenic Reserve
- Public Fishing Access
- Section 6 (f) Lands

Data Sources:

Public Recreational Lands: CT DEP
Roads layer: CT DEP, updated by URS
RR Track: CT DEP
Town Boundary: CT DEP
Hydrography: CT DEP, updated by URS
RR Milepost Markers and Grade Crossings: Metro-North Track Charts



| | | | |
|---|--|--|-------------------------------|
| PROJECT TITLE: DANBURY BRANCH IMPROVEMENT PROGRAM & ELECTRIFICATION ENVIRONMENTAL IMPACT STATEMENT | STATE OF CONNECTICUT DEPARTMENT OF TRANSPORTATION | TOWN(S): BETHEL, DANBURY | PROJECT NO: 302-008 |
| | | | MAP NO: 5.2.12 |
| GIS MAPPING BY: URS CORPORATION DATE: 02/2009 | | MAP TITLE: PUBLIC RECREATIONAL/ 6(F)/POTENTIAL 4(F) PROPERTIES | SHEET NO: 8 OF 14 |



Legend

Railroad Track

1000 Foot Study Corridor

Town Boundary

Railroad Station

Proposed Location of New Railroad Station

Railroad Milepost Marker

Railroad Crossing

Private Railroad Crossing

Interstate Highway

US Highway

State Road

Local Road

Public Recreational Lands

Municipal

Parks

General Recreation

Conservation

Preservation

School

ConnDEP State Property

Flood Control

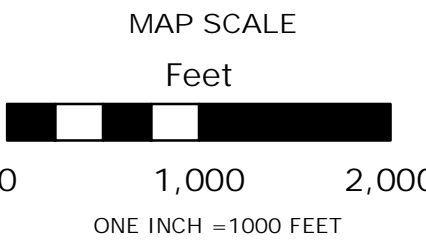
State Park Scenic Reserve

Public Fishing Access

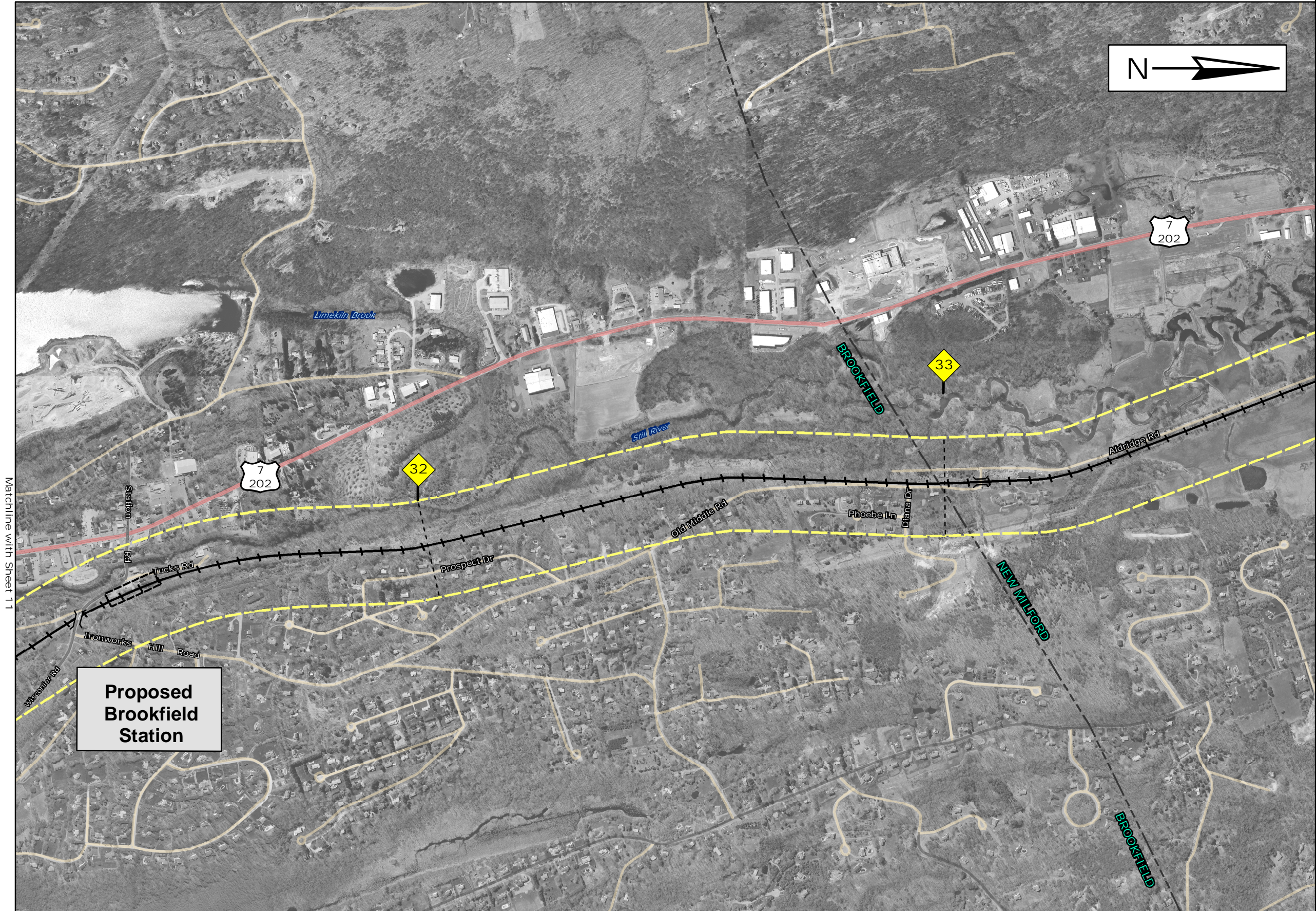
Section 6 (f) Lands

Data Sources:

Public Recreational Lands: CT DEP
Roads: CT DEP
RR Track: CT DEP
Town Boundary: CT DEP
Hydrography: CT DEP
RR Milepost Markers and
Grade Crossings: Metro-North
Track Charts



| | | | | | |
|--|--|--|---|--|---------------------|
| PROJECT TITLE: DANBURY BRANCH IMPROVEMENT PROGRAM & ELECTRIFICATION ENVIRONMENTAL IMPACT STATEMENT | | STATE OF CONNECTICUT DEPARTMENT OF TRANSPORTATION |  | TOWN(S): DANBURY, BETHEL | PROJECT NO: 302-008 |
| GIS MAPPING BY: URS CORPORATION DATE: 02/2009 | | | | MAP TITLE: PUBLIC RECREATIONAL/ 6(F)/POTENTIAL 4(F) PROPERTIES | MAP NO: 5.2.12 |
| | | | | | SHEET NO: 9 OF 14 |



Legend

- Railroad Track
- 1000 Foot Study Corridor
- Town Boundary
- Railroad Station
- Proposed Location of New Railroad Station
- Railroad Milepost Marker
- Railroad Crossing
- Private Railroad Crossing
- Interstate Highway
- US Highway
- State Road
- Local Road

Public Recreational Lands

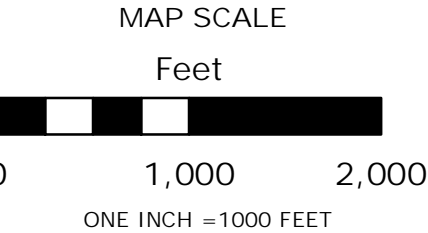
Municipal

- Parks
- General Recreation
- Conservation
- Preservation
- School

ConnDEP State Property

- Flood Control
- State Park Scenic Reserve
- Public Fishing Access
- Section 6 (f) Lands

Data Sources:
Public Recreational Lands: CT DEP
Roads: CT DEP, updated by URS
RR Track: CT DEP
Town Boundary: CT DEP
Hydrography: CT DEP, updated by URS
RR Milepost Markers and Grade Crossings: Metro-North
Track Charts



| | | | | |
|--|--|---|--|------------------------|
| PROJECT TITLE: DANBURY BRANCH IMPROVEMENT PROGRAM & ELECTRIFICATION ENVIRONMENTAL IMPACT STATEMENT | STATE OF CONNECTICUT DEPARTMENT OF TRANSPORTATION |  | TOWN(S): BROOKFIELD, NEW MILFORD | PROJECT NO: 302-008 |
| | | | MAP TITLE: PUBLIC RECREATIONAL/ 6(F)/POTENTIAL 4(F) PROPERTIES | MAP NO: 5.2.12 |
| GIS MAPPING BY: URS CORPORATION DATE: 02/2009 | | | SHEET NO: 12 OF 14 | |



Legend

- Railroad Track
- 1000 Foot Study Corridor
- Town Boundary
- Railroad Station
- Proposed Location of New Railroad Station
- Railroad Milepost Marker
- Railroad Crossing
- Private Railroad Crossing
- Interstate Highway
- US Highway
- State Road
- Local Road

Public Recreational Lands

Municipal

- Parks
- General Recreation
- Conservation
- Preservation
- School

ConnDEP State Property

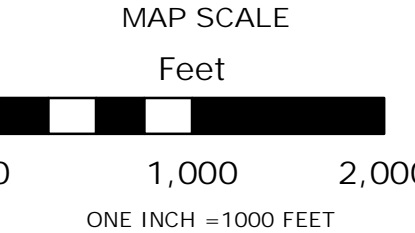
- Flood Control
- State Park Scenic Reserve

Public Fishing Access

- Section 6 (f) Lands

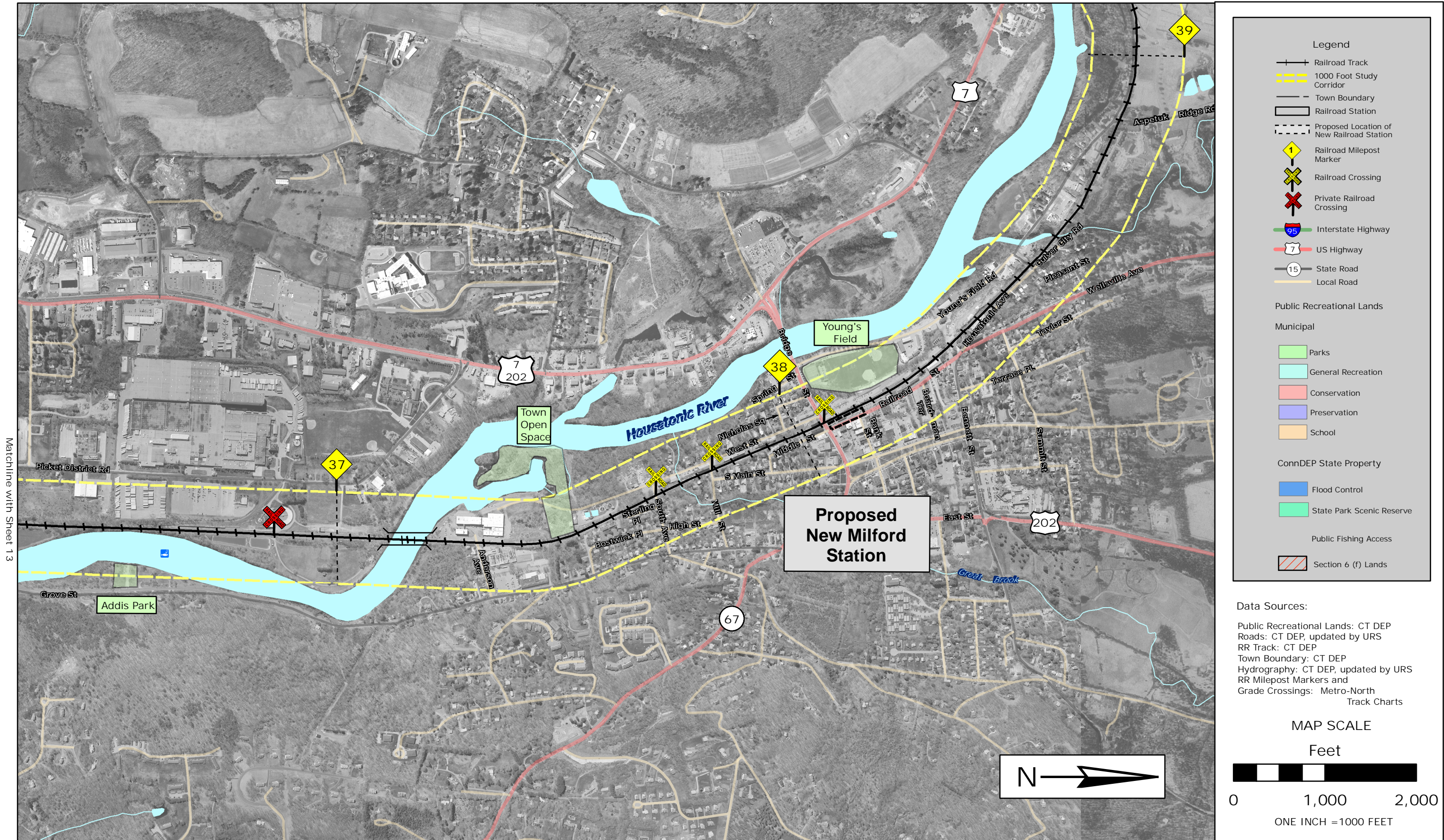
Data Sources:

Public Recreational Lands: CT DEP
Roads: CT DEP, updated by URS
RR Track: CT DEP
Town Boundary: CT DEP
Hydrography: CT DEP, updated by URS
RR Milepost Markers and Grade Crossings: Metro-North Track Charts



| | | | |
|--|--|--|------------------------|
| PROJECT TITLE: DANBURY BRANCH IMPROVEMENT PROGRAM & ELECTRIFICATION ENVIRONMENTAL IMPACT STATEMENT | STATE OF CONNECTICUT DEPARTMENT OF TRANSPORTATION | TOWN(S): NEW MILFORD | PROJECT NO: 302-008 |
| | | | MAP NO: 5.2.12 |
| GIS MAPPING BY: URS CORPORATION | DATE: 02/2009 | MAP TITLE: PUBLIC RECREATIONAL/ 6(F)/POTENTIAL 4(F) PROPERTIES | SHEET NO: 13 OF 14 |





| | | | | |
|--|--|---|--|-------------------------------|
| PROJECT TITLE: DANBURY BRANCH IMPROVEMENT PROGRAM & ELECTRIFICATION ENVIRONMENTAL IMPACT STATEMENT | STATE OF CONNECTICUT DEPARTMENT OF TRANSPORTATION |  | TOWN(S): NEW MILFORD | PROJECT NO: 302-008 |
| | | | MAP TITLE: PUBLIC RECREATIONAL/ 6(F)/POTENTIAL 4(F) PROPERTIES | MAP NO: 5.2.12 |
| GIS MAPPING BY: URS CORPORATION | DATE: 02/2009 | | | SHEET NO: 14 OF 14 |