

Putnam Bridge Multimodal Trail Connections  
**Feasibility Study**

**Public  
Meeting**

**June 18, 2013**



# Presentation Outline

- » Study Overview
- » Planning & Design Goals
- » Preliminary & *Favorable* Alternatives
- » What Happens Next?
- » What about Funding?
- » Comments & Questions



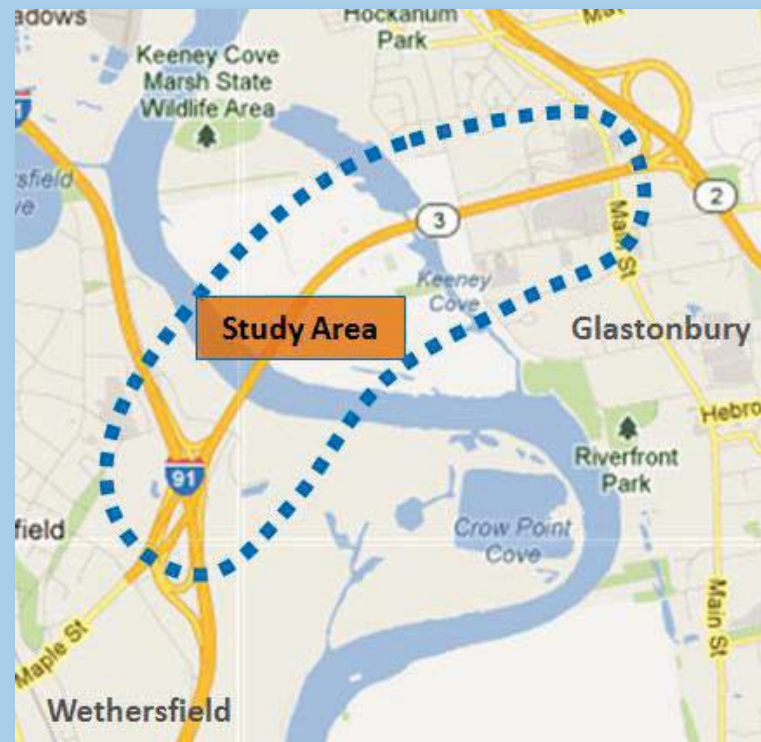
# Study Overview

## » Background

- Need & desire for multimodal travel options
- \$5 mill. Putnam Bridge walkway
- Future access provisions to be determined

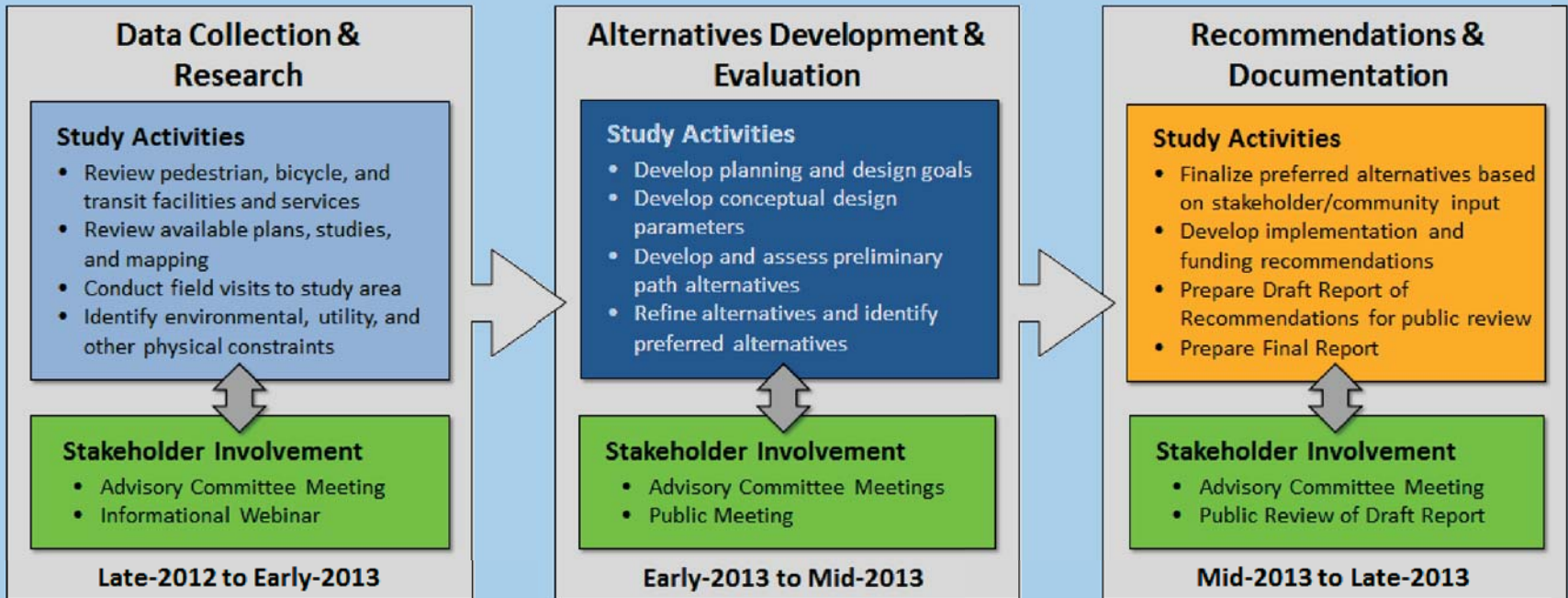
## » Purpose

- Advance planning work for access
- Evaluate potential connections to transportation network
- Provide recommendations for future projects



# Study Overview

## » Study Process

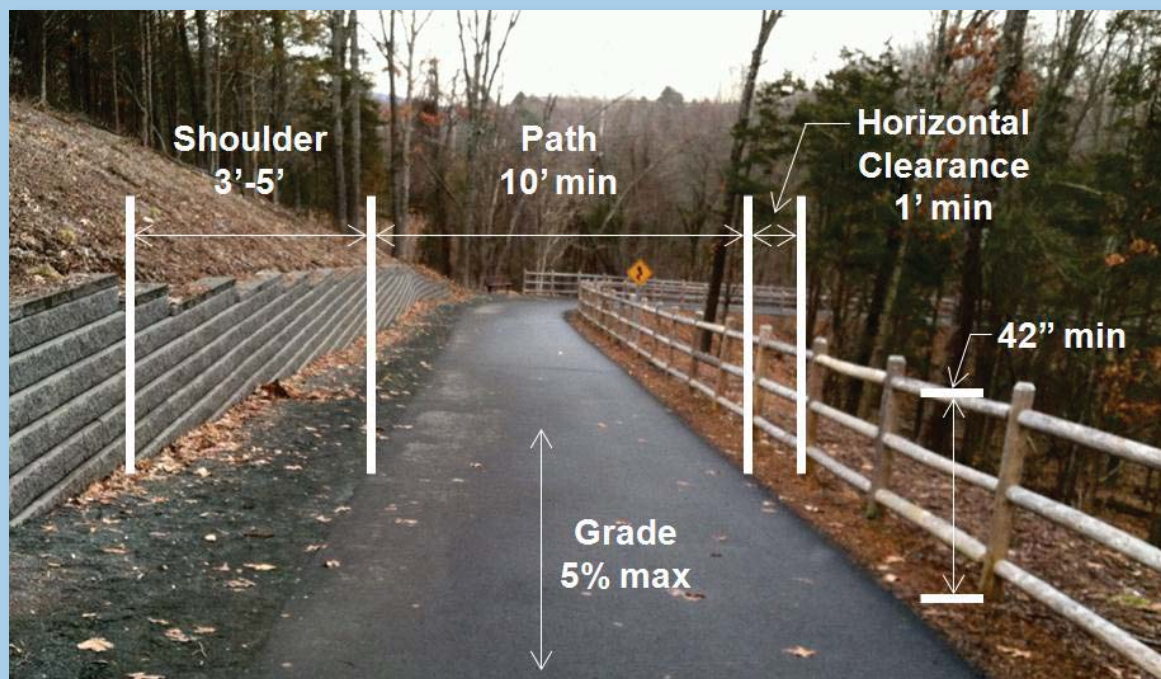


## » Stakeholder Involvement is Key

# Study Overview

## » What is a *Shared Use Path*?

- Bikeway separated from motor vehicle traffic by open space or barrier
- Used by pedestrians, bicyclists, skaters, joggers, wheelchair users, others
- Designed for two-way travel



Smith School Greenway  
Glastonbury

# Planning & Design Goals

## » Maximize Transportation & Recreational Utility

- Promote year-round use for variety of users
- Provide: Accessibility, connectivity, reliability, user comfort & security

## » Minimize Impacts

## » Facilitate Implementation

- Build community & agency support for path connections
- Address: Stakeholder needs/priorities, funding challenges



# Preliminary Alternatives Summary

## » General Characteristics

- Wethersfield Terminus: Great Meadow Road
- Glastonbury Terminus: Naubuc Avenue
- Closely follow Route 3 corridor
- Cross Keeney Cove at Route 3 crossing



# Wethersfield Alternatives

## » Preliminary Alternatives Summary

- Four alternatives considered
- All connect bridge walkway to Great Meadow Road intersection
- Main variables: Grades & potential impacts
- Other considerations: Parking
- Cost Range: \$350 k to \$600 k

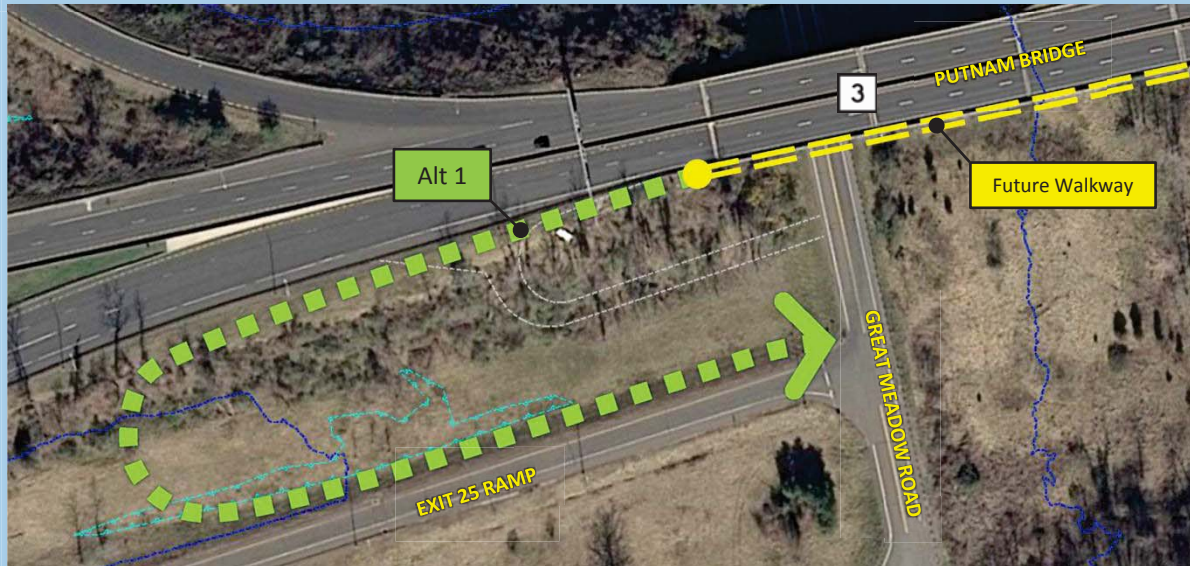




# Wethersfield Alternatives

## » Preliminary Alternatives Summary

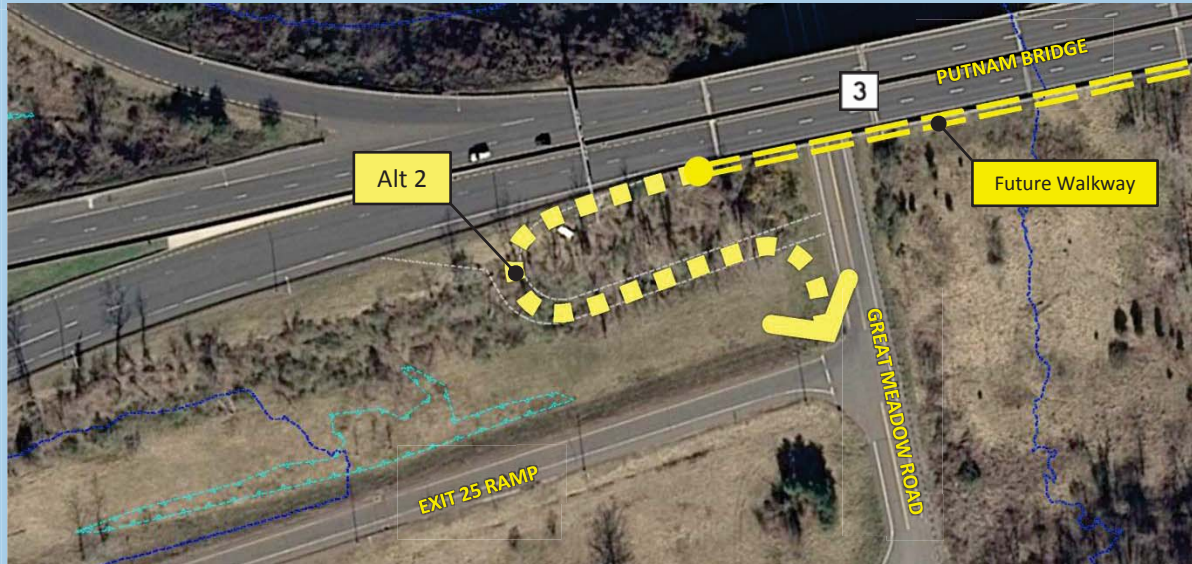
- Four alternatives considered
- All connect bridge walkway to Great Meadow Road intersection
- Main variables: Grades & potential impacts
- Other considerations: Parking
- Cost Range: \$350 k to \$600 k



# Wethersfield Alternatives

## » Preliminary Alternatives Summary

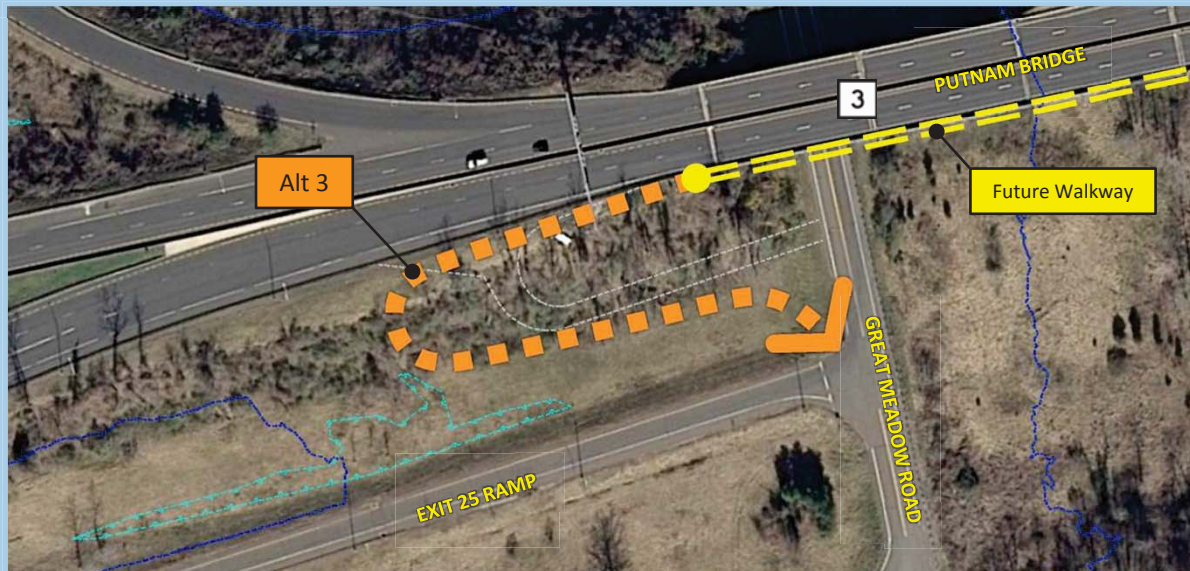
- Four alternatives considered
- All connect bridge walkway to Great Meadow Road intersection
- Main variables: Grades & potential impacts
- Other considerations: Parking
- Cost Range: \$350 k to \$600 k



# Wethersfield Alternatives

## » Preliminary Alternatives Summary

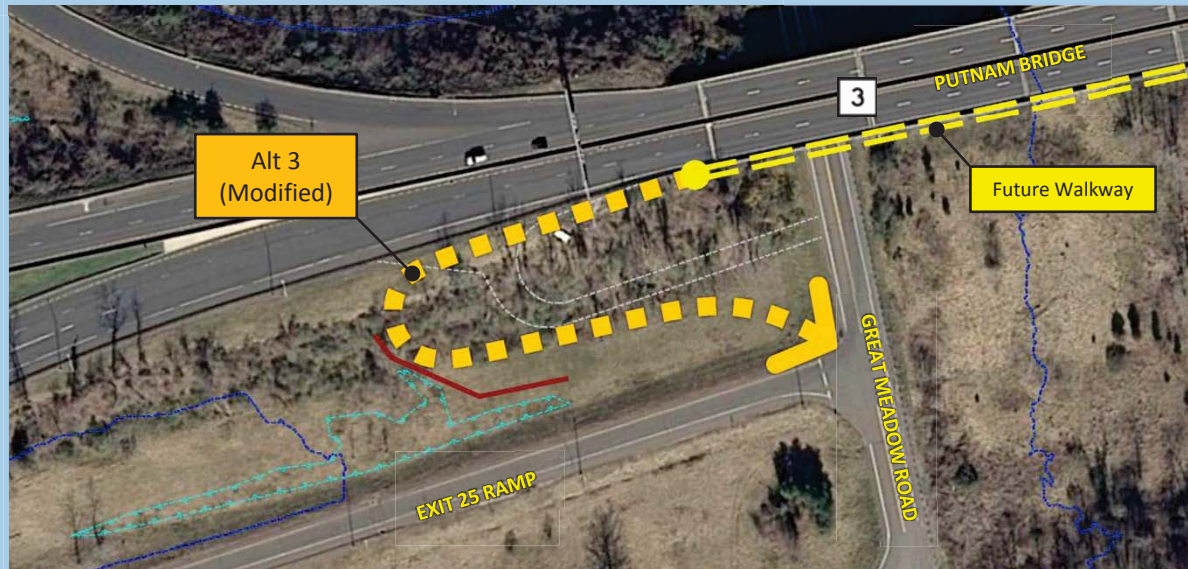
- Four alternatives considered
- All connect bridge walkway to Great Meadow Road intersection
- Main variables: Grades & potential impacts
- Other considerations: Parking
- Cost Range: \$350 k to \$600 k



# Wethersfield Alternatives

## » Favorable Alternative Summary

- Length: 650 ft
- Maximum Grade: 5%
- Environmental Impacts: None
- Estimated Cost: \$600 k



# Wethersfield Alternatives

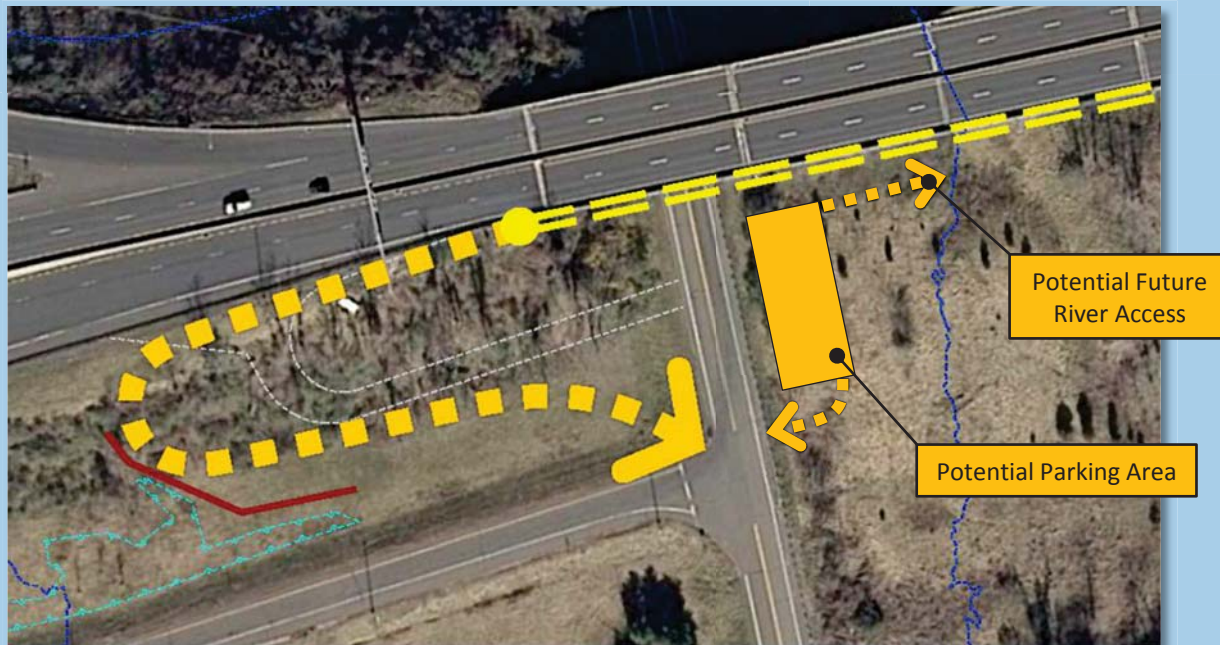
## » Favorable Alternative | Conceptual Rendering



# Wethersfield Alternatives

## » Favorable Alternative Summary

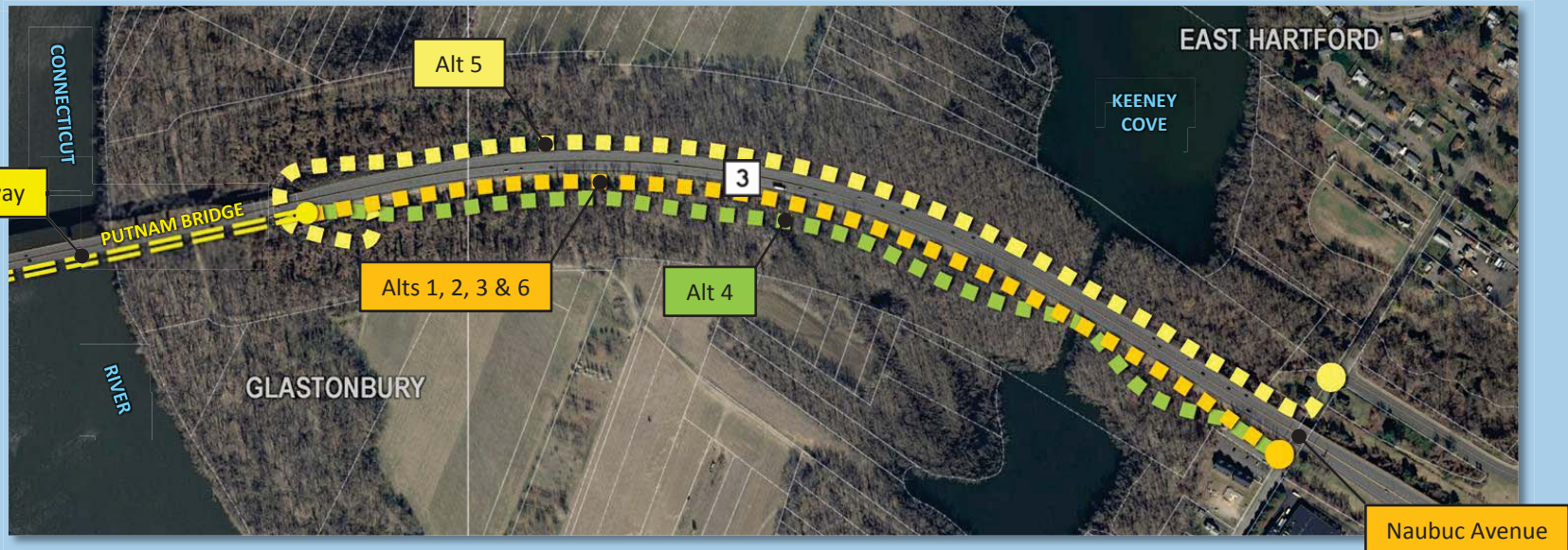
- Length: 650 ft
- Maximum Grade: 5%
- Environmental Impacts: None
- Estimated Cost: \$600 k



# Glastonbury Alternatives

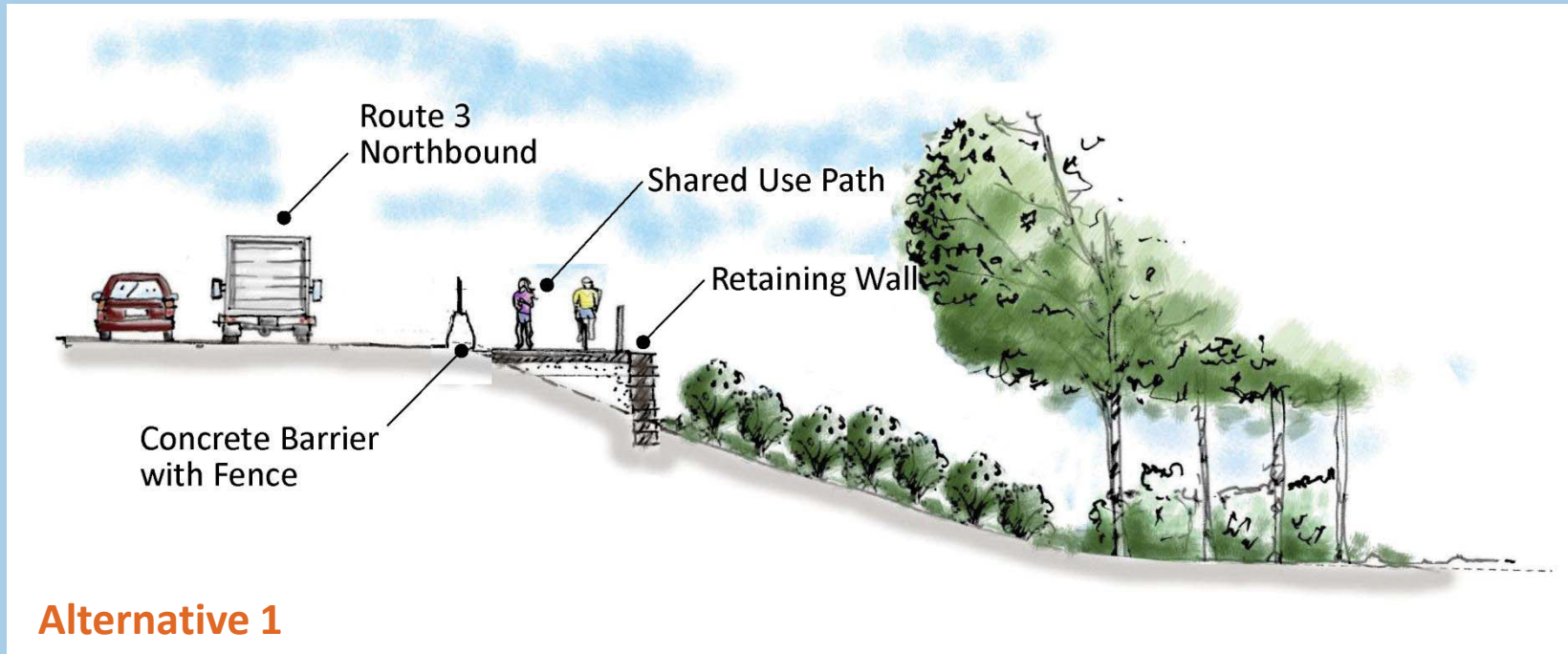
## » Preliminary Alternatives Summary

- Six alternatives considered
- All connect bridge walkway to Naubuc Avenue
- Main variables: Separation, flood potential, impacts, cost
- Other considerations: Naubuc Avenue Improvements
- Cost Range: \$2 m to \$3.9 m



# Glastonbury Alternatives

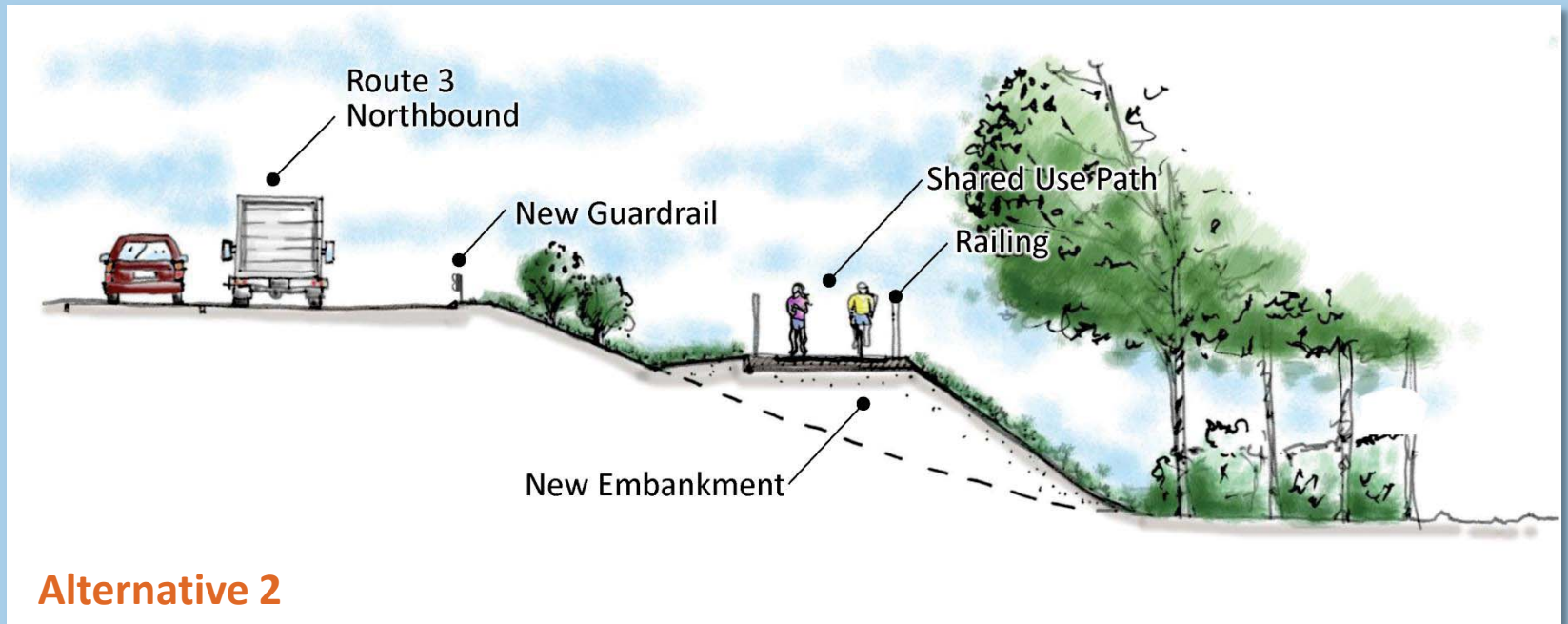
## » Preliminary Alternatives Summary





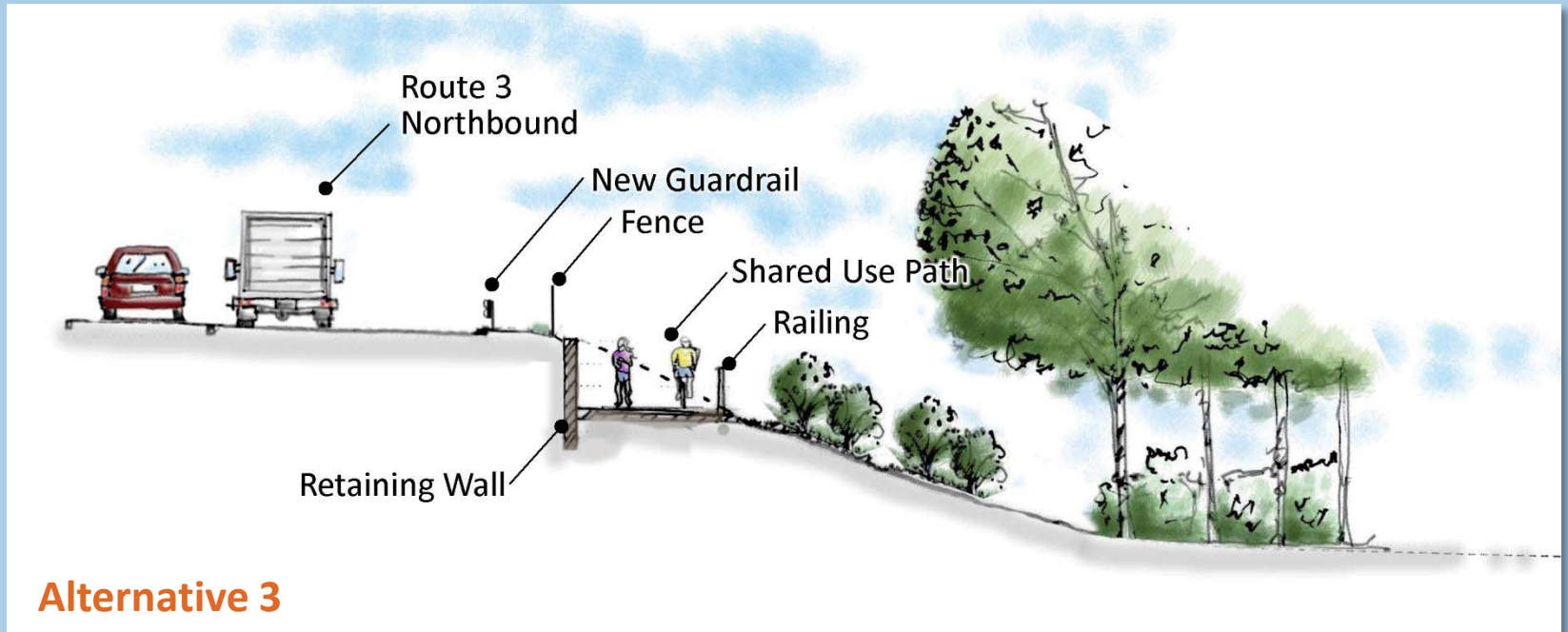
# Glastonbury Alternatives

## » Preliminary Alternatives Summary



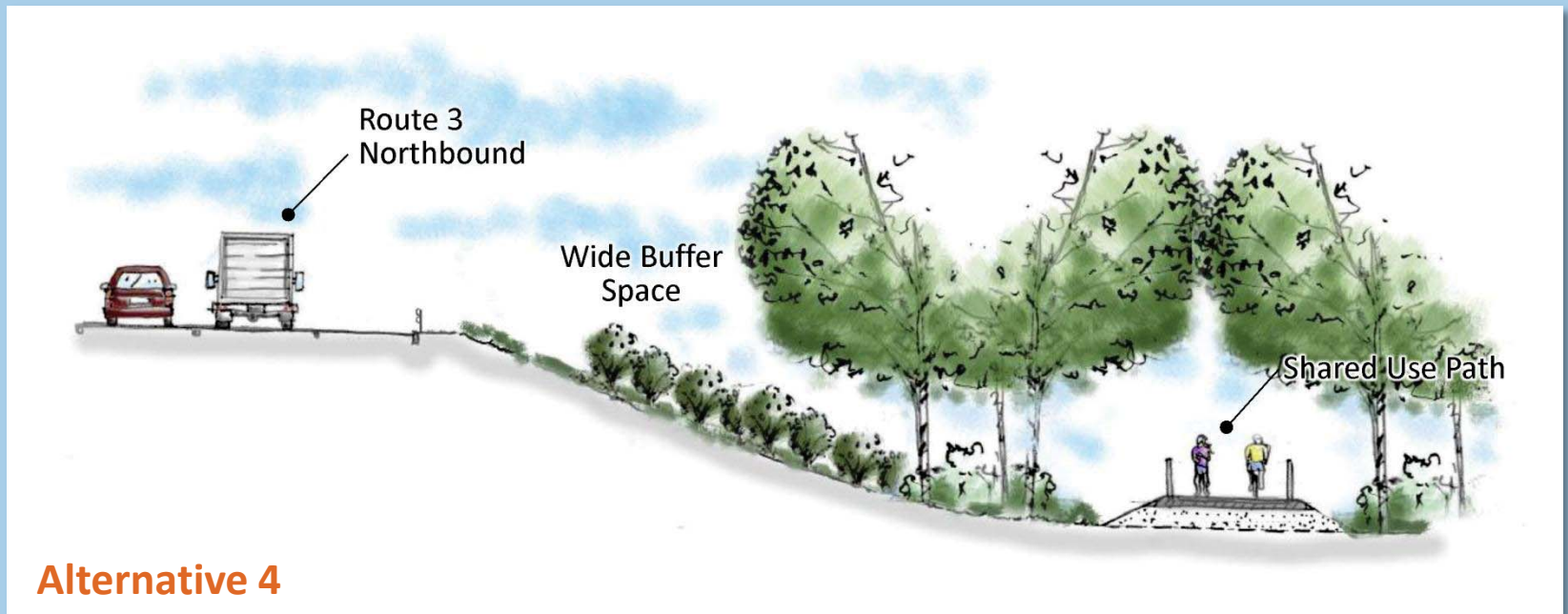
# Glastonbury Alternatives

## » Preliminary Alternatives Summary



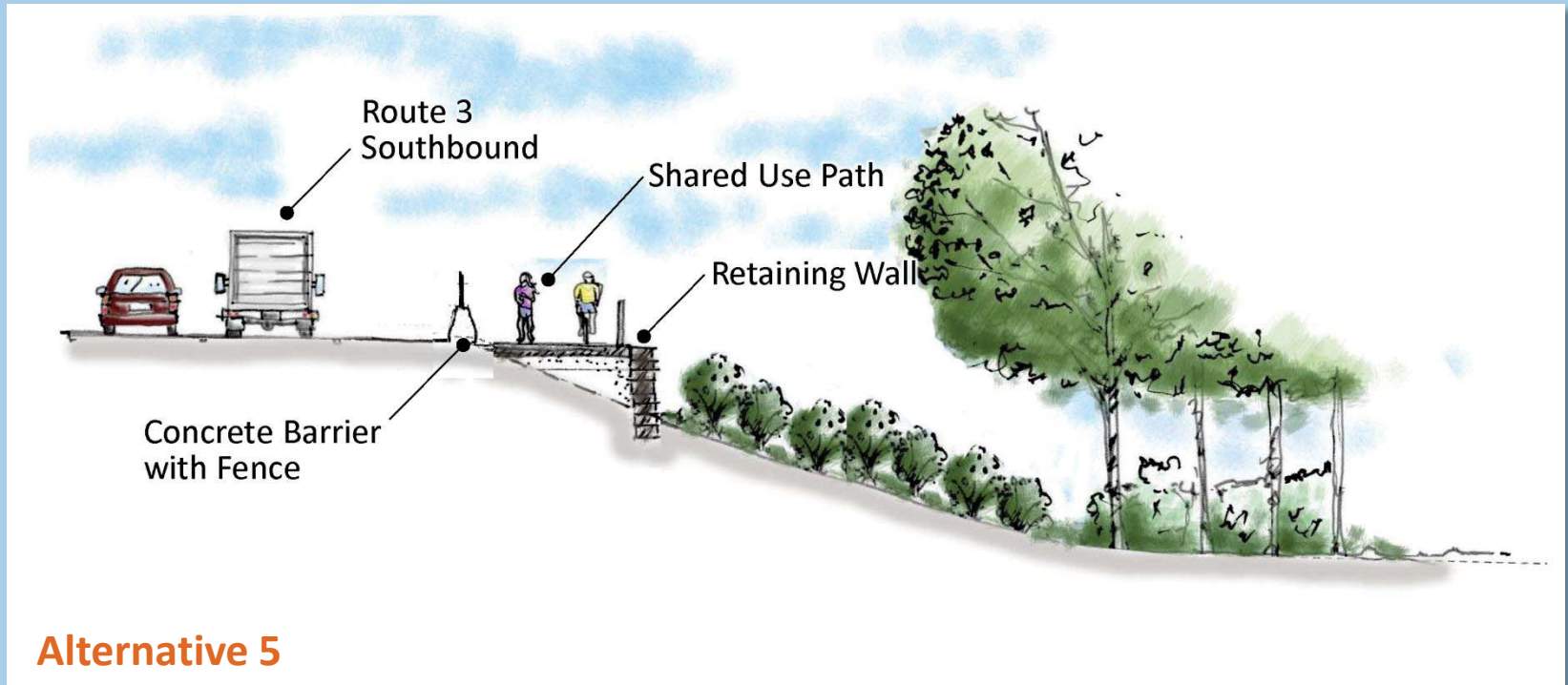
# Glastonbury Alternatives

## » Preliminary Alternatives Summary



# Glastonbury Alternatives

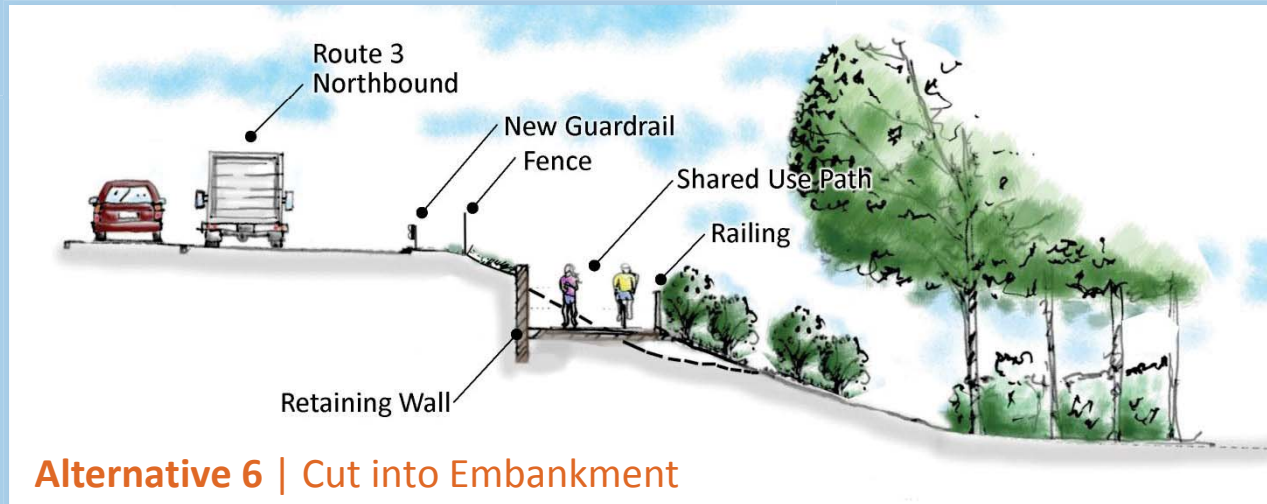
## » Preliminary Alternatives Summary



# Glastonbury Alternatives

## » *Favorable Alternative Summary*

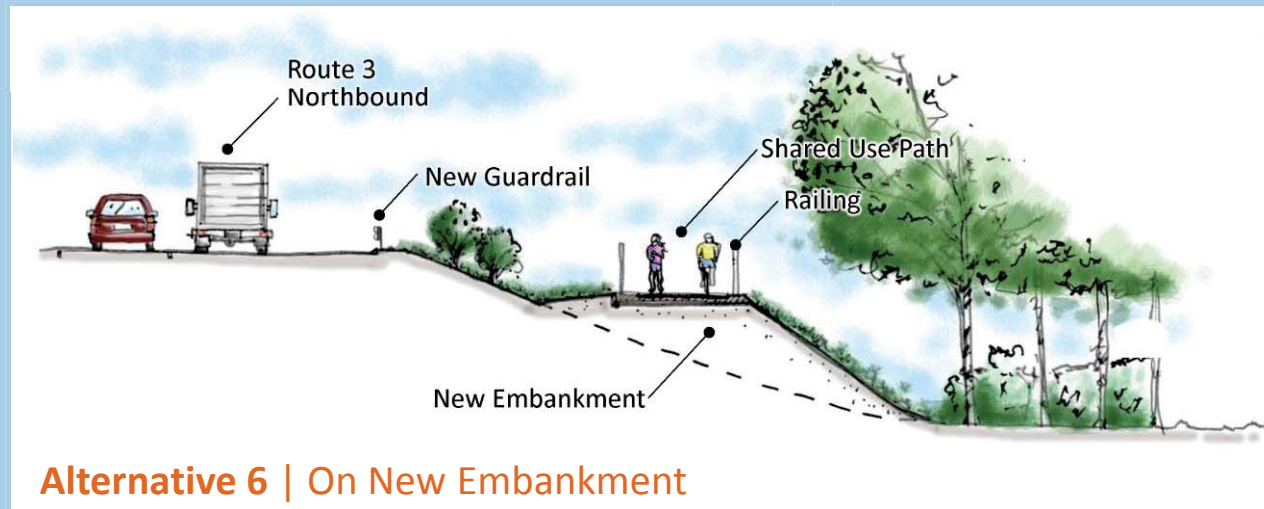
- Location: South side
- Length: 4,100 ft
- Maximum Grade: 5%
- Separation: 20 – 50 ft (29 ft average)
- Environmental Impacts: Minimized
- Estimated Cost: \$2.6 m



# Glastonbury Alternatives

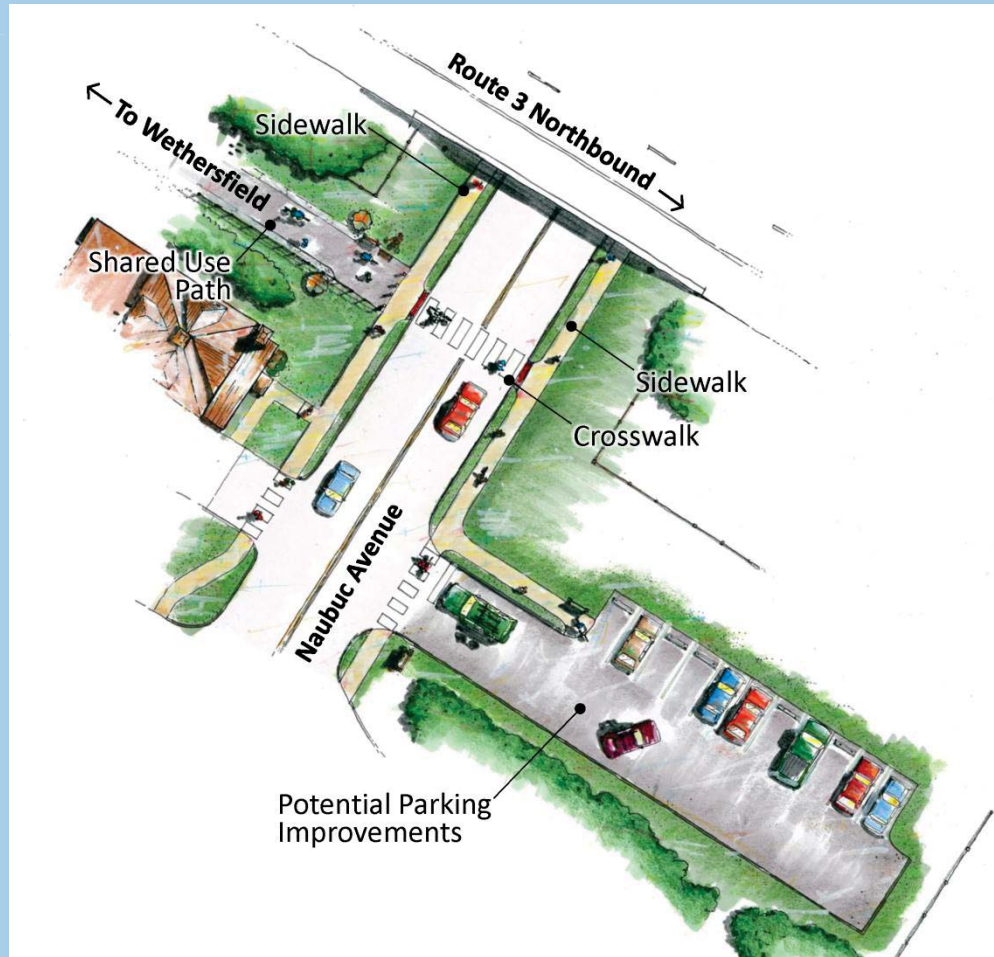
## » Favorable Alternative Summary

- Location: South side
- Length: 4,100 ft
- Maximum Grade: 5%
- Separation: 20 – 50 ft (29 ft average)
- Environmental Impacts: Minimized
- Estimated Cost: \$2.6 m



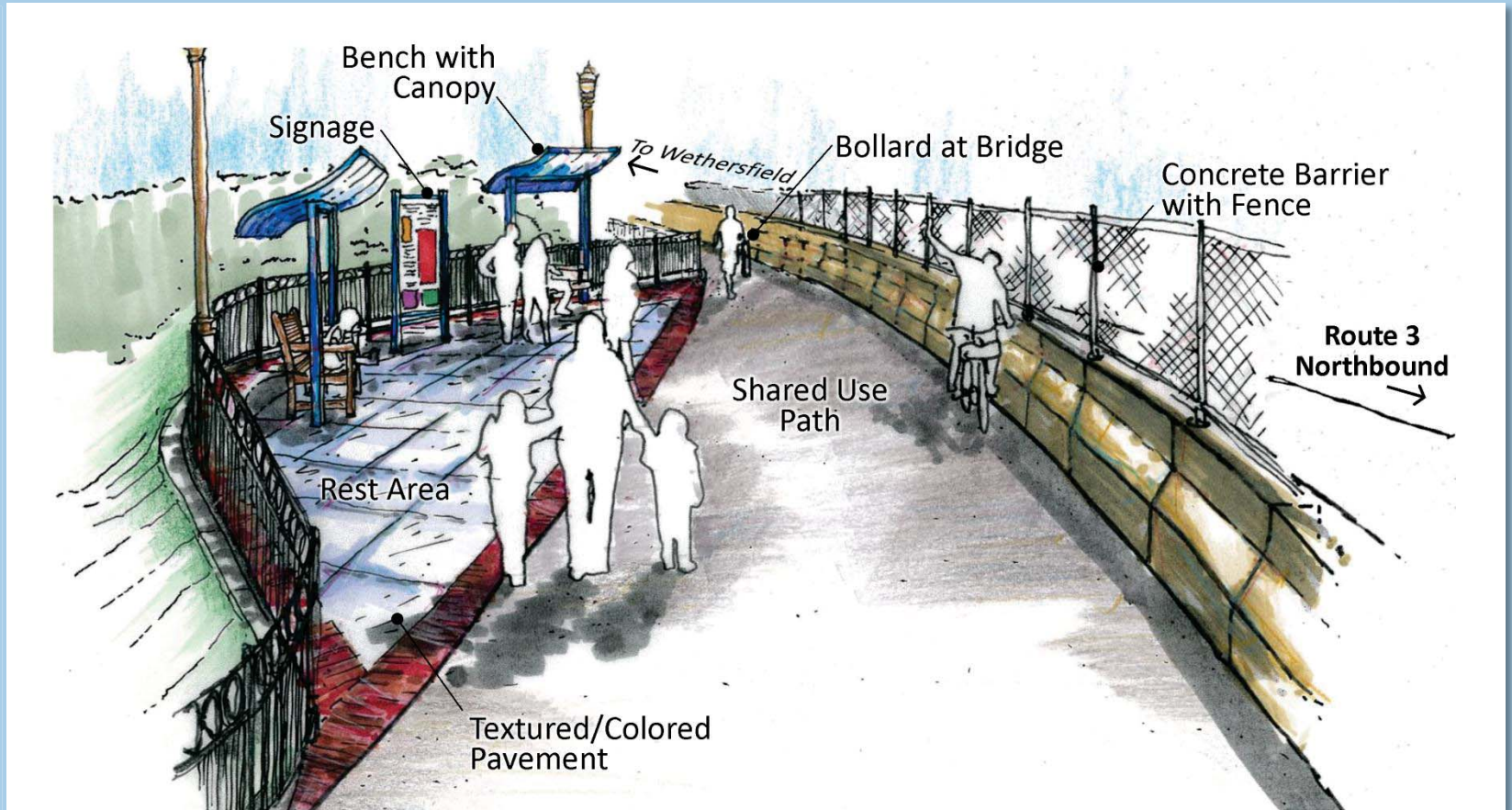
# Glastonbury Alternatives

## » Favorable Alternative | Conceptual Renderings



# Glastonbury Alternatives

## » Favorable Alternative | Conceptual Renderings





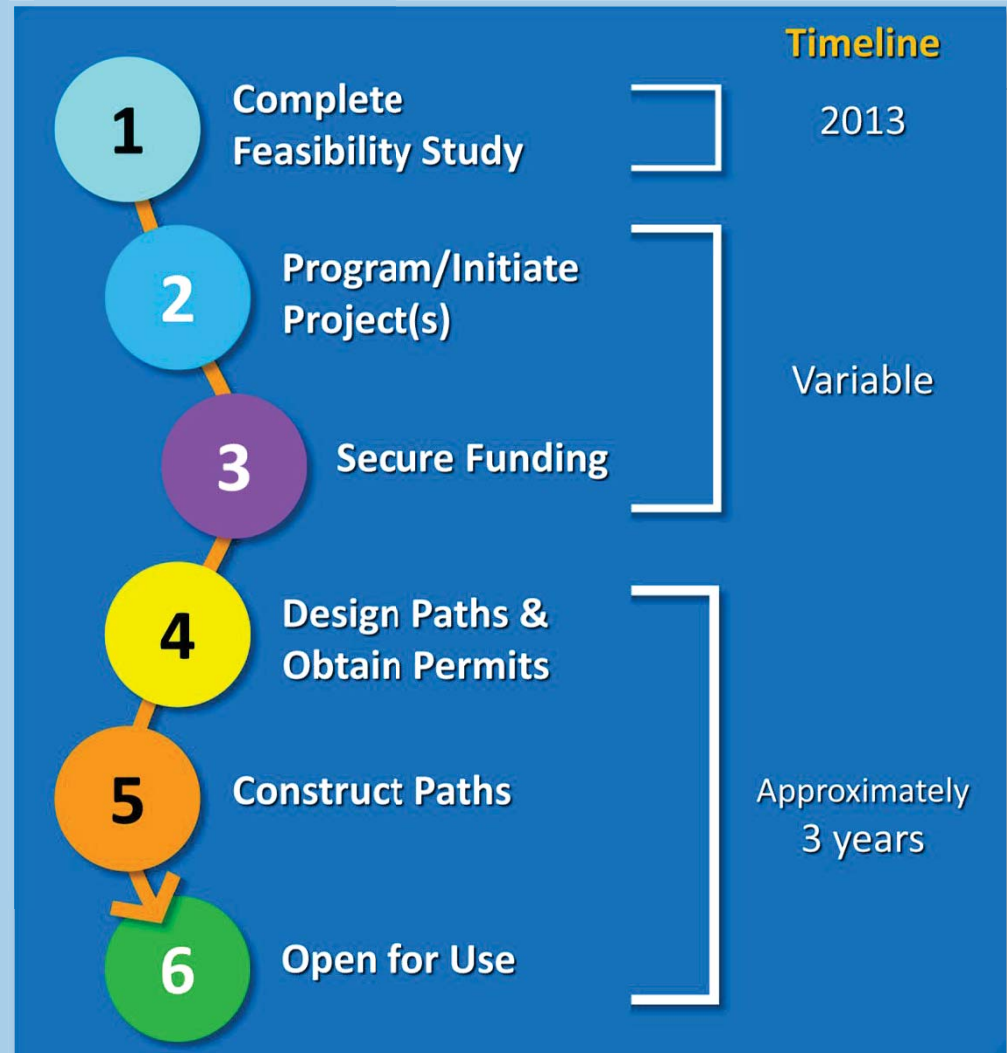
# What Happens Next?

## » Complete Study

- Draft Report for Public review – Fall 2013
- Final Report – End of 2013

## » Next Steps

- Project champions needed to move forward



# What about Funding?

## » Traditional Federal/State Funding Sources

- Federal: STP-Urban & Transportation Alternatives Programs
- State: Recreational Trails Program, STEAP Grants
- Competitive selection process
- Town participation: Typically up to 20% for construction
- Combined funding is possible

## » Alternative Funding Sources

- Private donations  
(individuals, corporations, foundations)
- Local business sponsorships (products/services)
- Local fundraisers
- Community volunteer groups for maintenance



# Comments & Questions

## » What are Your Needs, Priorities, Concerns?

**Talk to Us About Your...**

Putnam Bridge Multimodal Trail Connections Feasibility Study

**...Needs**

**...Priorities**

**...Concerns**

Putnam Bridge Multimodal Trail Connections Feasibility Study  
Websterfield and Glasborough

**Comment Form**

Date \_\_\_\_\_

The Connecticut Department of Transportation is interested in your comments on the Putnam Bridge Multimodal Trail Connections Feasibility Study.

Please complete this self-addressed form (please print clearly), and leave it with a study member this evening, or mail by July 14, 2013 (first-class postage required).

Name \_\_\_\_\_ Address \_\_\_\_\_

**I was informed about this study primarily through: (please select one)**

Newspaper Advertisement     Meeting Flyer     Friends/Neighbors/Word-of-mouth  
 Newspaper Article     Web Site     Other \_\_\_\_\_

**Comments: (please print clearly)**

\_\_\_\_\_  
 \_\_\_\_\_  
 \_\_\_\_\_  
 \_\_\_\_\_  
 \_\_\_\_\_  
 \_\_\_\_\_  
 \_\_\_\_\_  
 \_\_\_\_\_  
 \_\_\_\_\_  
 \_\_\_\_\_  
 \_\_\_\_\_

Thank you for your participation in this study.

**Comment Forms:**  
 Submit by July 12, 2013

# Thank You...

## » For Additional Information:

- **David Head, CTDOT**  
David.Head@ct.gov  
(860) 594-2149
- **Jeff Parker, CHA**  
jparker@chacompanies.com  
(860) 257-4557

## » Web Page

- [www.ct.gov/dot](http://www.ct.gov/dot)  
Search "Putnam Trail Study"

**DEPARTMENT OF TRANSPORTATION**

TRANSLATION COPYRIGHT

Home About Us Press Releases Contact Us

TRAVEL RESOURCES DOING BUSINESS WITH CONNDOT PROGRAMS AND SERVICES PUBLICATIONS

**Documents**

**Putnam Bridge Multimodal Trail Connections Feasibility Study**

**Documents:**  
[Scope of Work](#)  
[Overview](#)  
[Preliminary Planning and Design Goals](#)  
[Shared Use Path Design Standards](#)  
[Study Schedule](#)

**Meetings:**

**Public Informational Meeting (June 18, 2013)**  
**Meeting Flyer**

**Date:** June 18, 2013  
**Time:** 6:30 pm Open House  
7:00 pm Presentation  
**Place:** Riverfront Community Center  
300 Welles Street, Glastonbury, CT

**Advisory Committee Meeting #3 (May 29, 2013)**  
**Agenda**  
[Revised Alternatives](#)  
[Glastonbury](#)  
[Wethersfield](#)  
Minutes - Coming Soon

**Advisory Committee Meeting #2 (April 9, 2013)**  
**Agenda**  
[Preliminary Alternatives](#)  
[Summary of Preliminary Alternatives](#)  
[Wethersfield Preliminary Alternatives](#)  
[Glastonbury Preliminary Alternatives](#)  
[Minutes](#)

**Advisory Committee Meeting #1 (January 31, 2013)**  
**Agenda**  
[Presentation](#)  
[Exhibits](#)

**Public Meeting**

Putnam Bridge Multimodal Trail Connections Feasibility Study

**Public Meeting**

**BIKE ROUTE**

The Connecticut Department of Transportation invites you to a public information meeting for the Putnam Bridge Multimodal Trail Connections Feasibility Study.

This meeting is an opportunity for you to review and discuss preliminary plans for future bicycle and pedestrian connections to the Route 19 Putnam Bridge walkway from Wethersfield and Glastonbury.

Please join us!

**Date:** June 18, 2013  
**Time:** 6:30 pm Open House  
7:00 pm Presentation  
**Place:** Riverfront Community Center  
300 Welles St., Glastonbury, CT

For more information, visit [www.ct.gov/dot](http://www.ct.gov/dot) and search "Putnam Trail Study," or scan the code at right.

CTDOT