

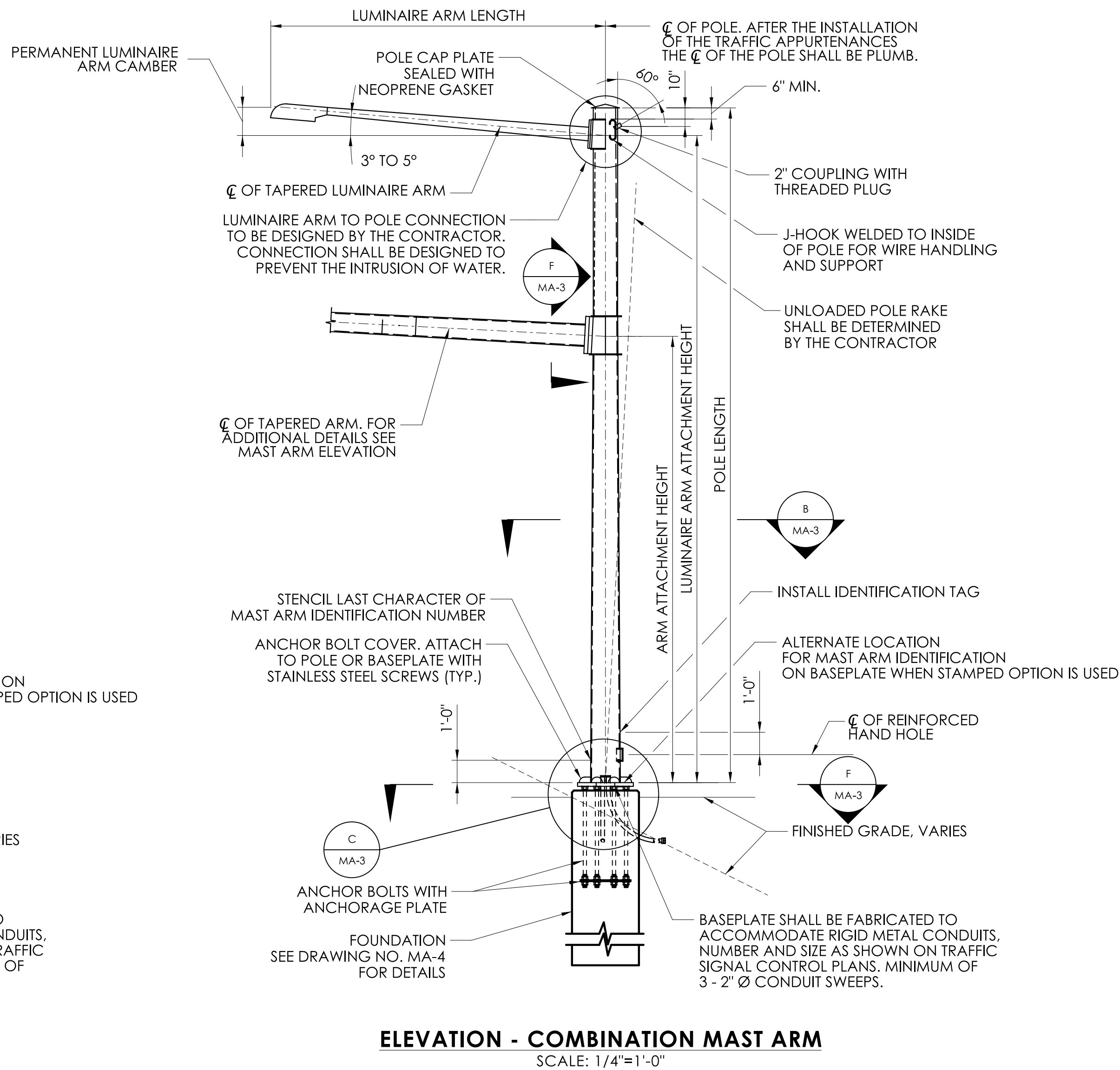
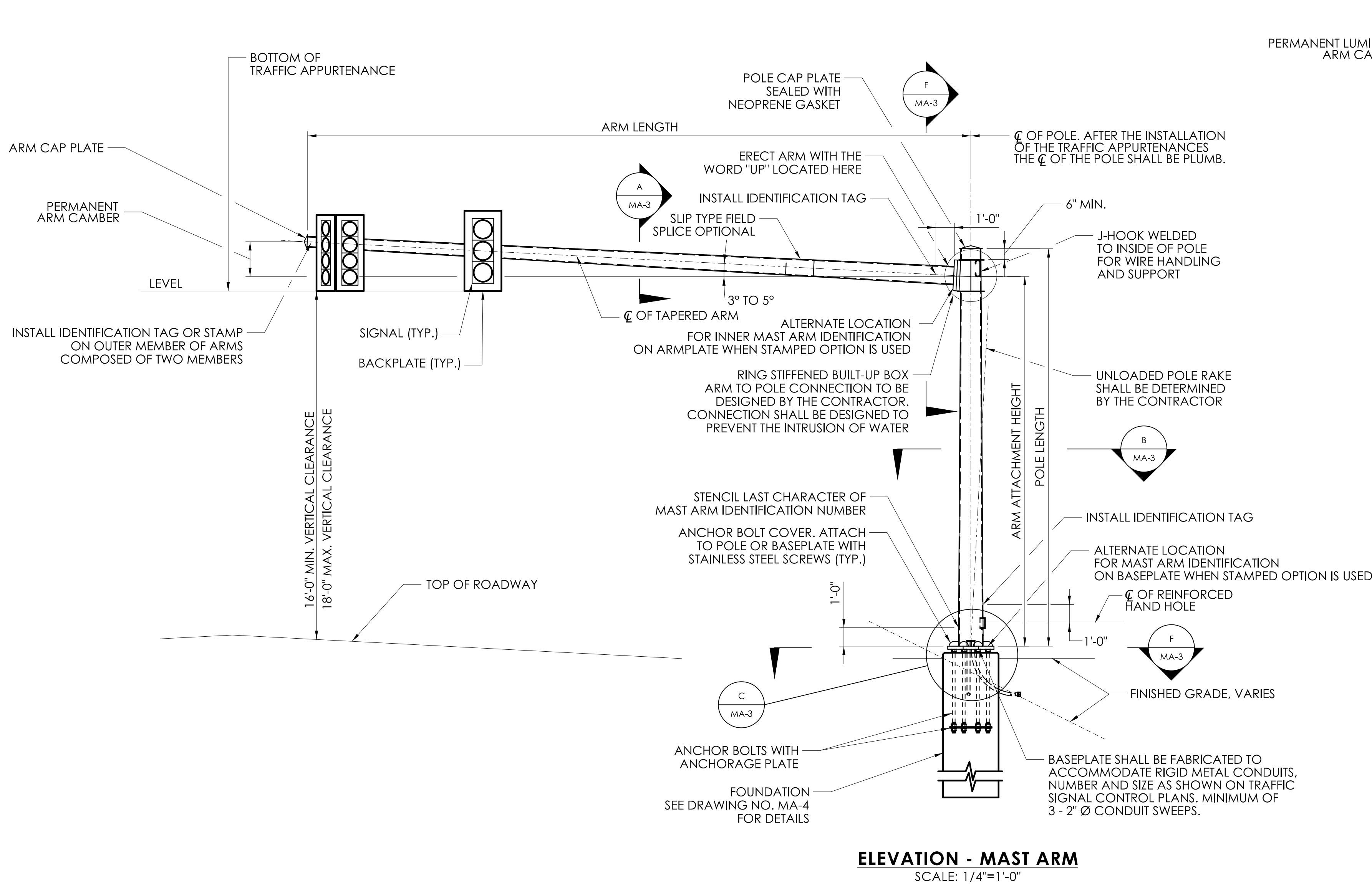
XX - STRUCTURES - MAST ARMS INDEX OF DRAWINGS			
DRAWING NUMBER	DRAWING TITLE	DRAWING NUMBER	DRAWING TITLE
MA-1	INDEX OF DRAWINGS		
MA-2	STEEL MAST ARM ASSEMBLY ELEVATION		
MA-3	STEEL MAST ARM ASSEMBLY DETAILS		
MA-4	STEEL MAST ARM ASSEMBLY FOUNDATION DETAILS		

NOTE TO DESIGNERS:

- 1 - DESIGNERS SHOULD PERFORM THE BELOW LISTED EDITS ON THE PDF FOR SUBMISSION.**
- DOUBLE CLICK ON TEXT "XX" TO EDIT SUBSET NUMBER IN THE INDEX OF DRAWING BLOCK.
 - DOUBLE CLICK ON TEXT "INSERT" AND "XXXX-XXXX" TO EDIT THE PROJECT SPECIFIC INFORMATION IN THE TITLE BLOCK. RIGHT CLICK ON THE TEXT AND "APPLY TO PAGES" TO COPY THE TITLE BLOCK INFORMATION TO ALL DRAWINGS.
- 2 - DESIGNERS SHOULD ADD PAGE LABELS, SHEET NUMBERS, WATERMARKS AND DIGITAL SIGNATURE FIELD TO THE PDF AND FLATTEN THIS DOCUMENT IN ACCORDANCE WITH THE LATEST VERSION OF CTDOT DIGITAL PROJECT DEVELOPMENT MANUAL.**
- 3 - DELETE THIS TEXT BOX BEFORE SUBMITTING.**

THE DESIGN APPEARS TO CONFORM TO APPLICABLE CRITERIA. APPROVAL IS NOT TO BE CONSTRUED TO MEAN THAT ALL ASPECTS OF THE DESIGN HAVE BEEN PERSONALLY CHECKED BY THE UNDERSIGNED.

TRANSPORTATION PRINCIPAL ENGINEER



MAST ARM ASSEMBLY NOTES

THE MAST ARM ASSEMBLY, INCLUDING THE ANCHORAGE TO THE FOUNDATION, SHALL BE DESIGNED, FABRICATED AND INSTALLED BY THE CONTRACTOR IN ACCORDANCE WITH THE SPECIAL PROVISION "XX STEEL MAST ARM ASSEMBLY" OR "XX STEEL COMBINATION MAST ARM ASSEMBLY".

THE MAST ARM ASSEMBLY, INCLUDING THE ARM SPAN, ARM ORIENTATION, AND THE LOCATIONS OF THE TRAFFIC APPURTENANCES SUPPORTED BY THE STRUCTURE ARE SHOWN ON THE TRAFFIC CONTROL SIGNAL PLAN. PRIOR TO DESIGN OF EACH MAST ARM ASSEMBLY, THE CONTRACTOR SHALL PREPARE A LAYOUT DRAWING BASED ON A FIELD SURVEY AND THE CONTRACT DOCUMENTS TO VERIFY THE MAST ARM ASSEMBLY WHEN INSTALLED WILL MEET THE GEOMETRIC AND CLEARANCE REQUIREMENTS IN THE CONTRACT DOCUMENTS. IF THE REQUIREMENTS CANNOT BE MET, THE CONTRACTOR SHALL NOTIFY THE ENGINEER.

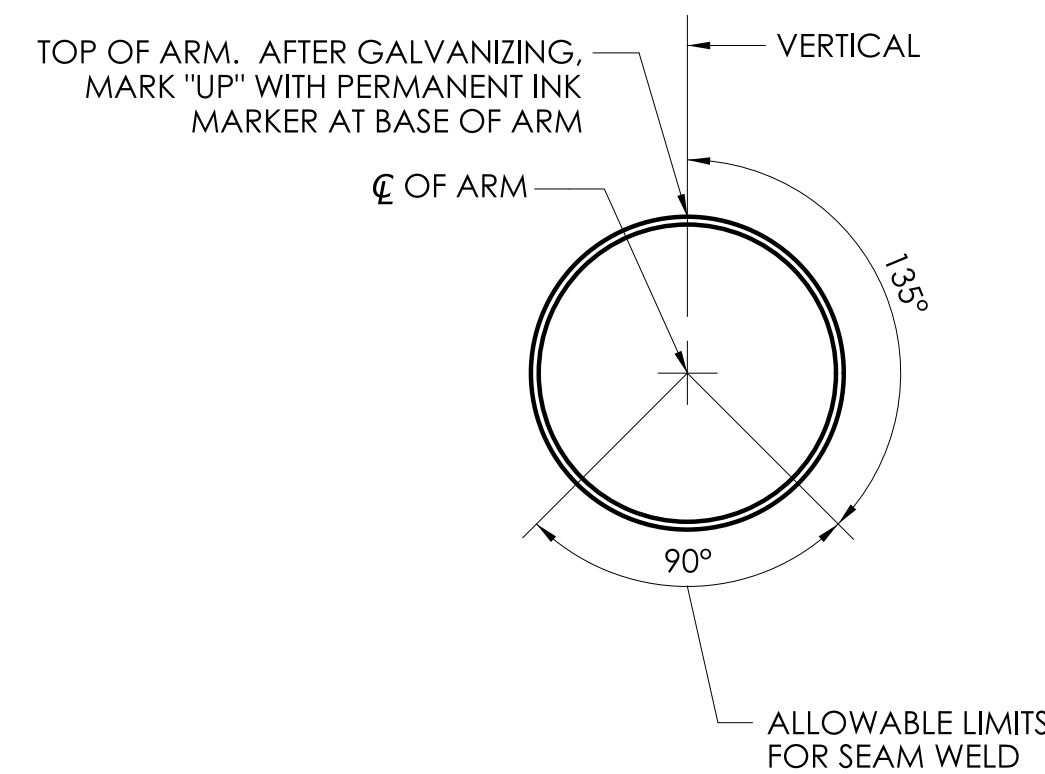
THE MAST ARM ASSEMBLIES SHALL BE DESIGNED IN ACCORDANCE WITH THE LATEST EDITION OF THE AASHTO LRFD SPECIFICATIONS FOR STRUCTURAL SUPPORTS FOR HIGHWAY SIGNS, LUMINAIRES AND TRAFFIC SIGNALS. INCLUDING THE LATEST INTERIM SPECIFICATIONS, AS AMENDED BY THE SPECIAL PROVISION "XX STEEL MAST ARM ASSEMBLY" OR "XX STEEL COMBINATION MAST ARM ASSEMBLY".

THE MAST ARM ASSEMBLIES SHALL BE DESIGNED TO SUPPORT TRAFFIC APPURTENANCES WITH PROPERTIES NO LESS THAN THOSE SHOWN ON THE TRAFFIC PLANS.

REV.	DATE	REVISION DESCRIPTION

SIGNATURE BLOCK:		SCALE AS NOTED	CONNECTICUT DEPARTMENT OF TRANSPORTATION	PROJECT TITLE:	TOWN(S):	DRAWING TITLE: STEEL MAST ARM ASSEMBLY ELEVATION	PROJECT NO.:	DRAWING NO.: MA-2
DESIGNER/DRAFTER:	CHECKED BY:							

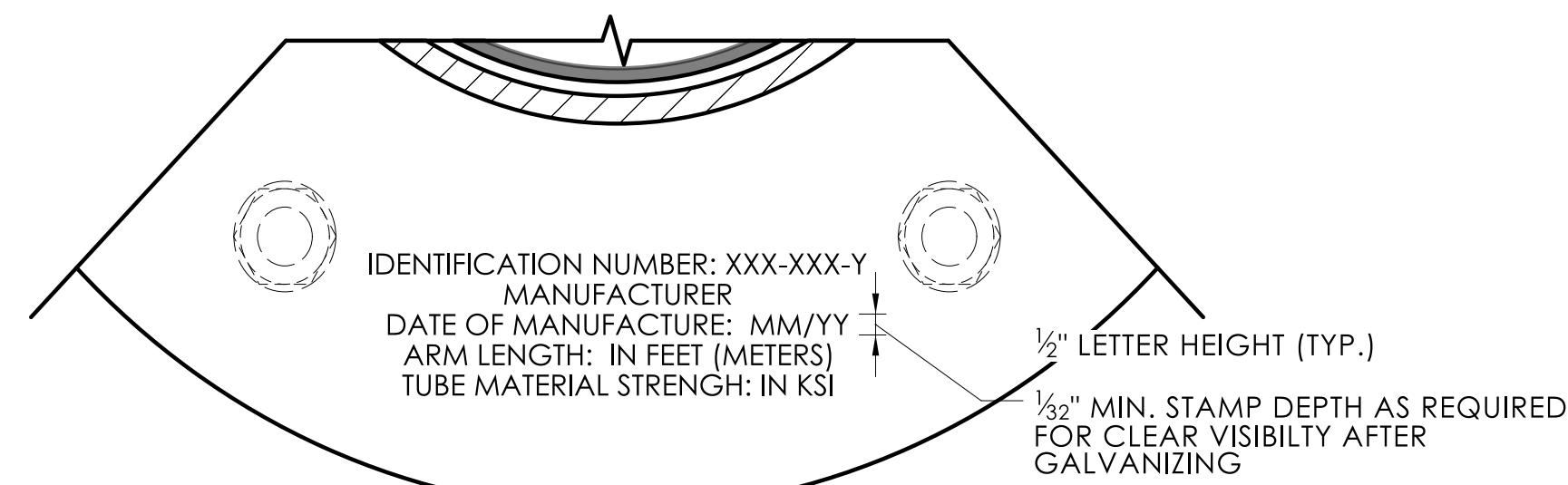
LASTED SAVED BY: FILE NAME:
PLOTTED DATE: 11/18/2025



SECTION
SCALE: 1 1/2" = 1'-0" MA-2

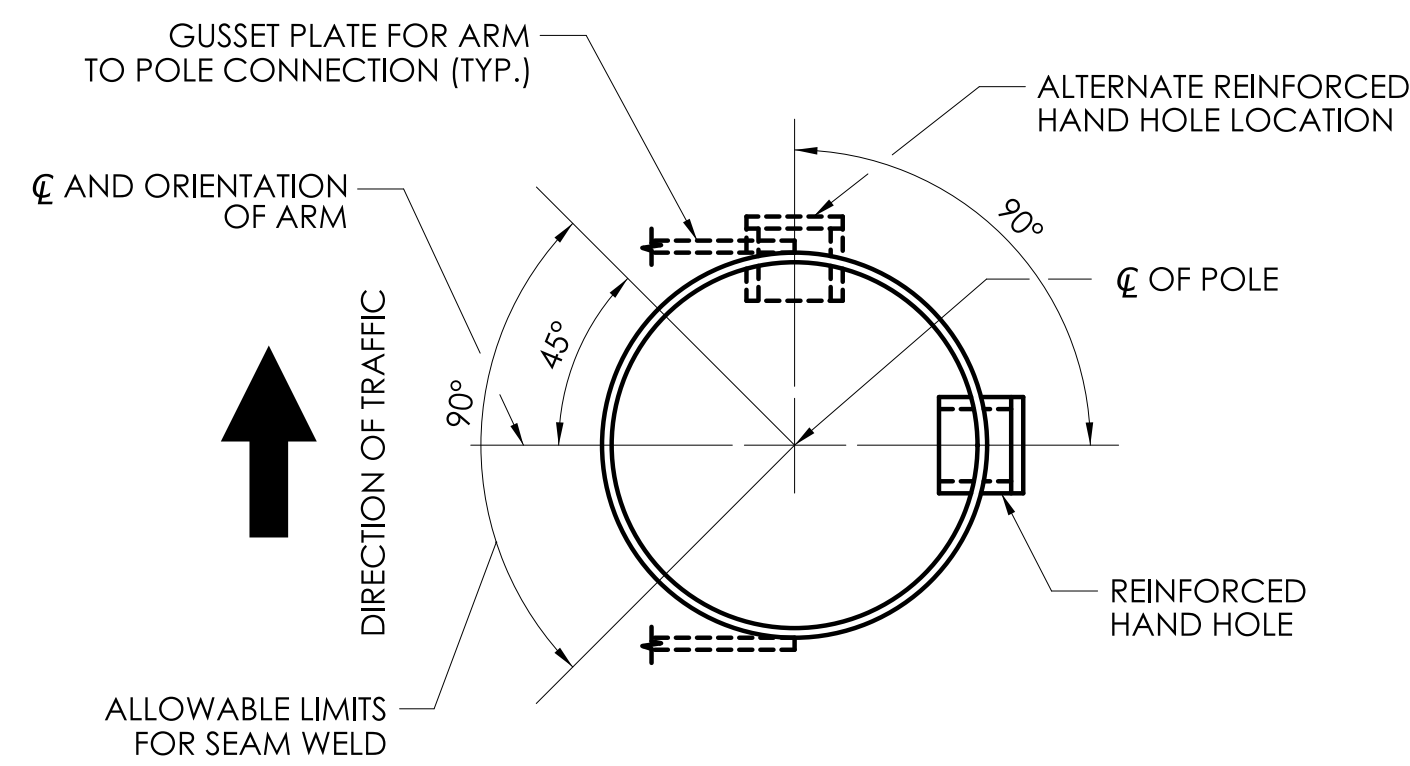
- ATTACH TAG TO POLE AND ARM WITH SELF-TAPPING TAMPER RESISTANT STAINLESS STEEL SCREWS (TYP.)
- WELDING STRICTLY PROHIBITED
- IDENTIFICATION NUMBER: XXX-XXX-Y
 - MANUFACTURER:
 - DATE OF MANUFACTURE: MM/YY
 - ARM LENGTH: IN FEET (METERS)
 - TUBE MATERIAL STRENGTH: IN KSI

TAG OPTION

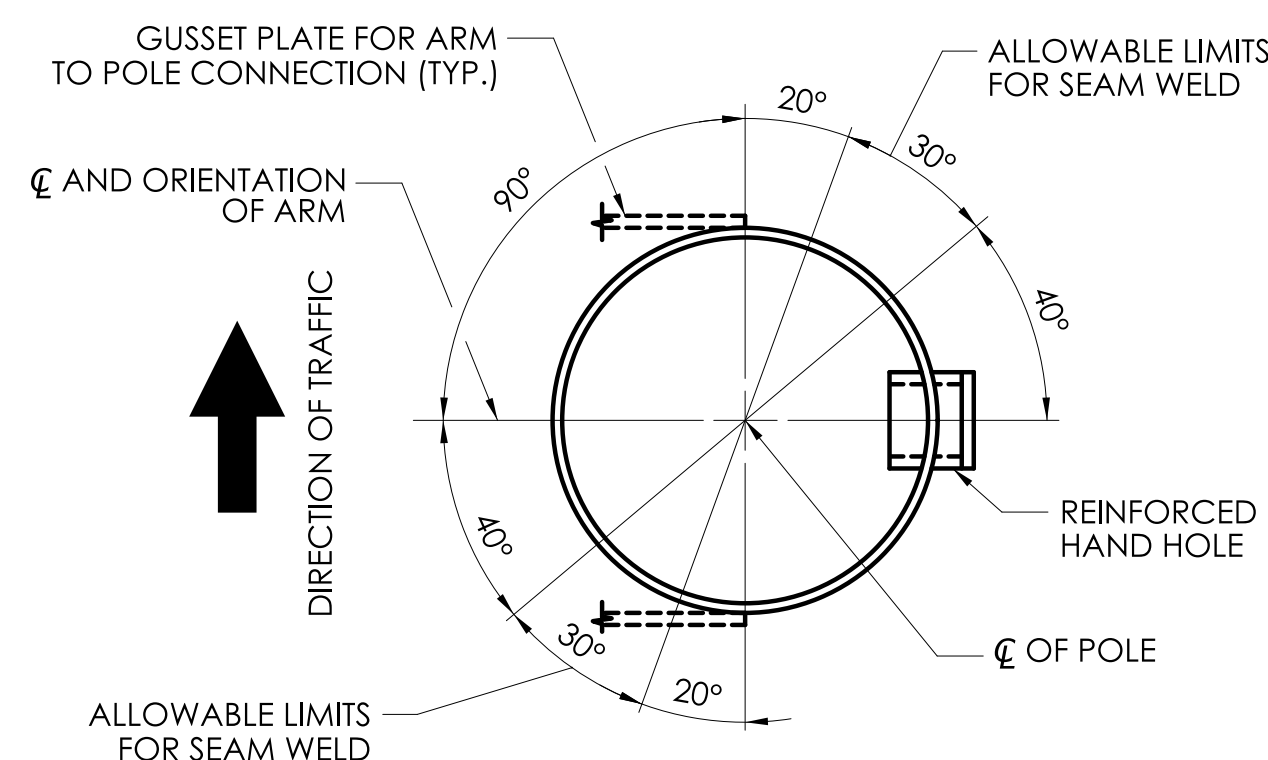


STAMPED OPTION

STRUCTURE IDENTIFICATION - N.T.S



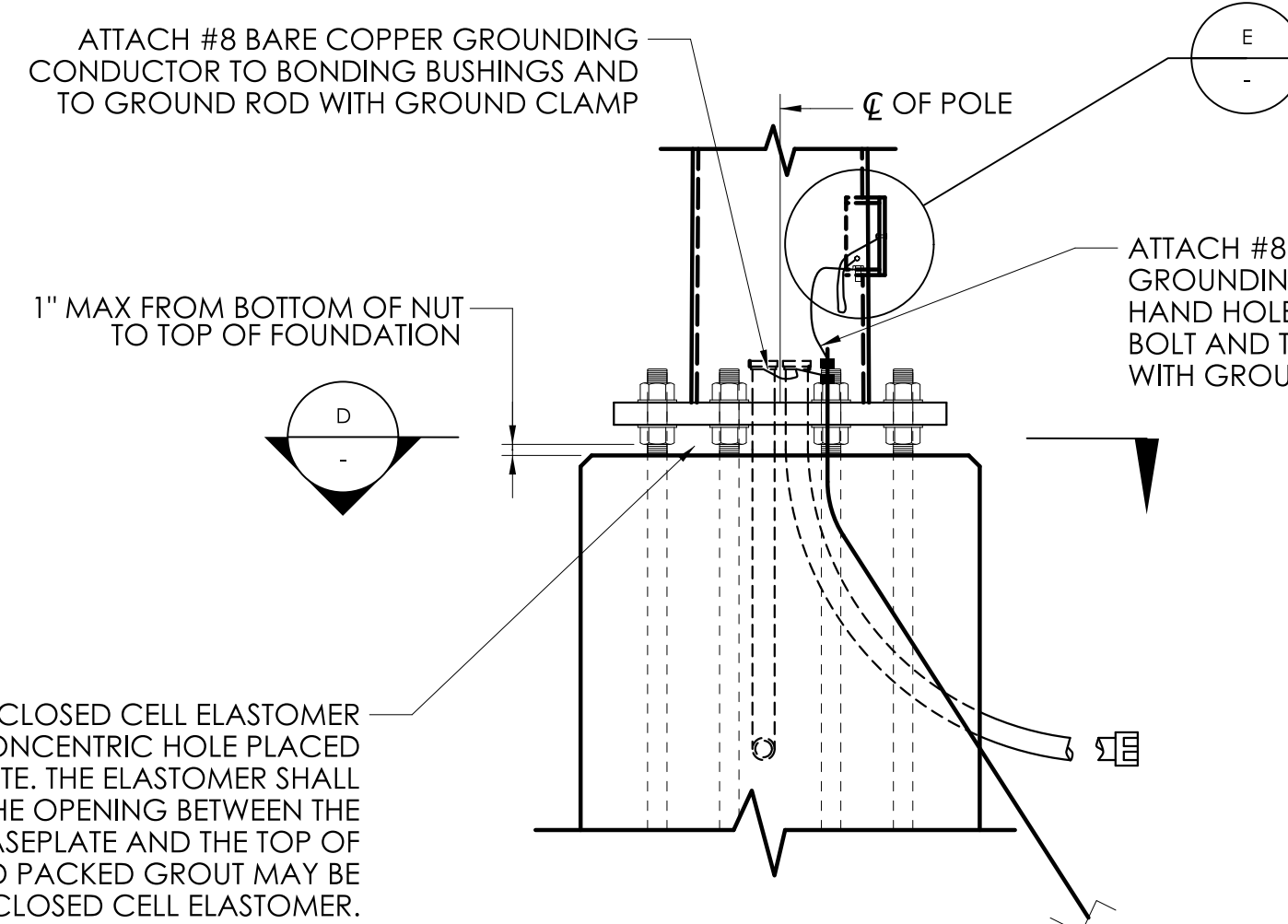
POLE WITH 1 SEAM WELD



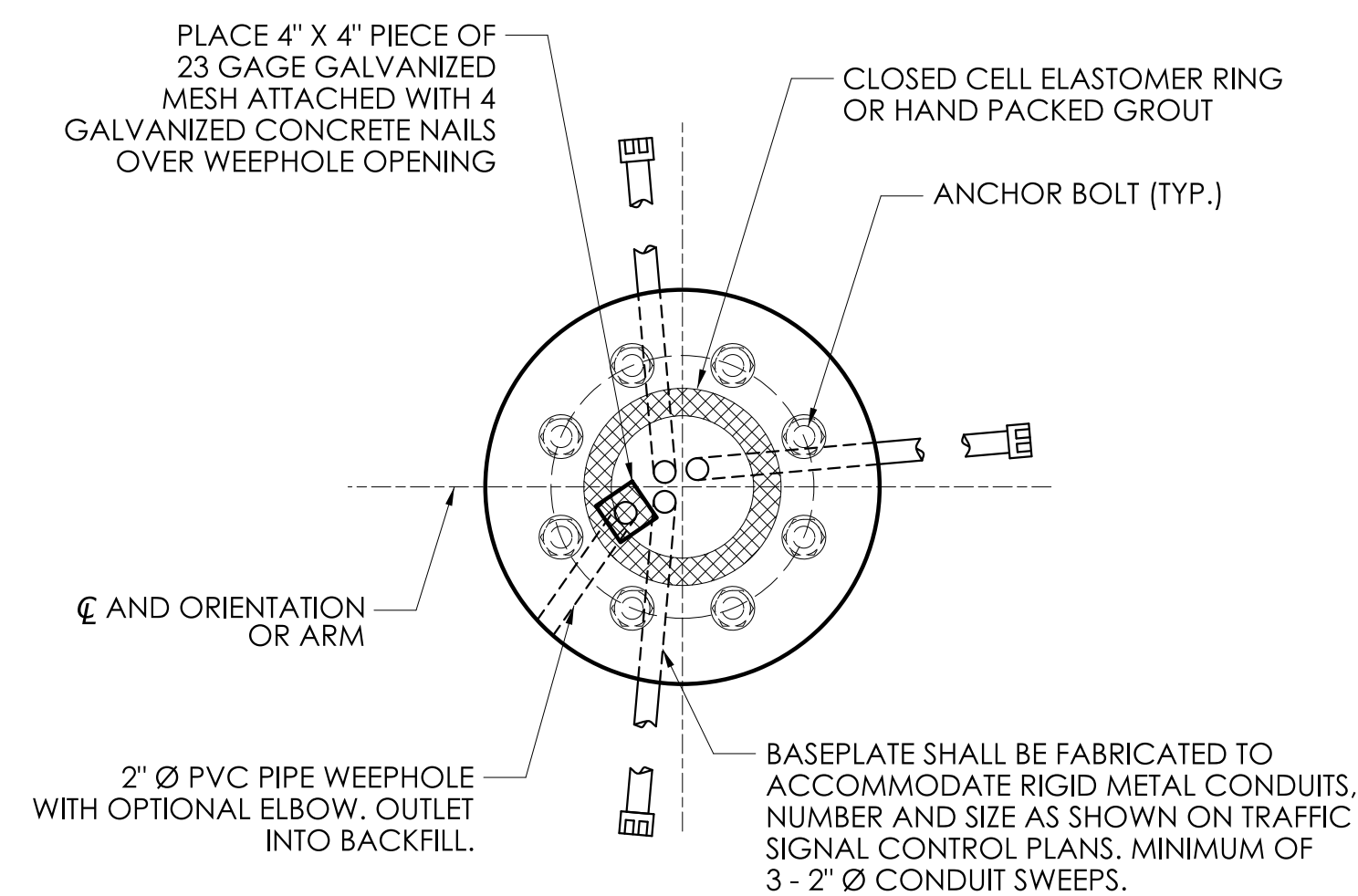
POLE WITH 2 SEAM WELD

SECTION
SCALE: 1 1/2" = 1'-0" MA-2

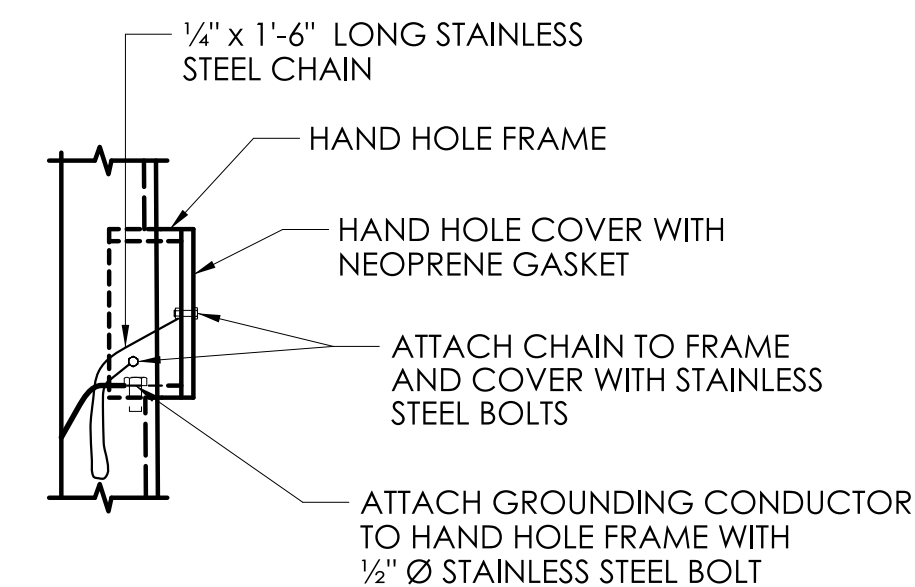
4 1/2" THK. X 1'-6" Ø CLOSED CELL ELASTOMER SEAL WITH 1'-1" Ø CONCENTRIC HOLE PLACED BELOW BASEPLATE. THE ELASTOMER SHALL COMPLETELY FILL THE OPENING BETWEEN THE BOTTOM OF THE BASEPLATE AND THE TOP OF THE FOUNDATION. HAND PACKED GROUT MAY BE USED IN LIEU OF THE CLOSED CELL ELASTOMER.



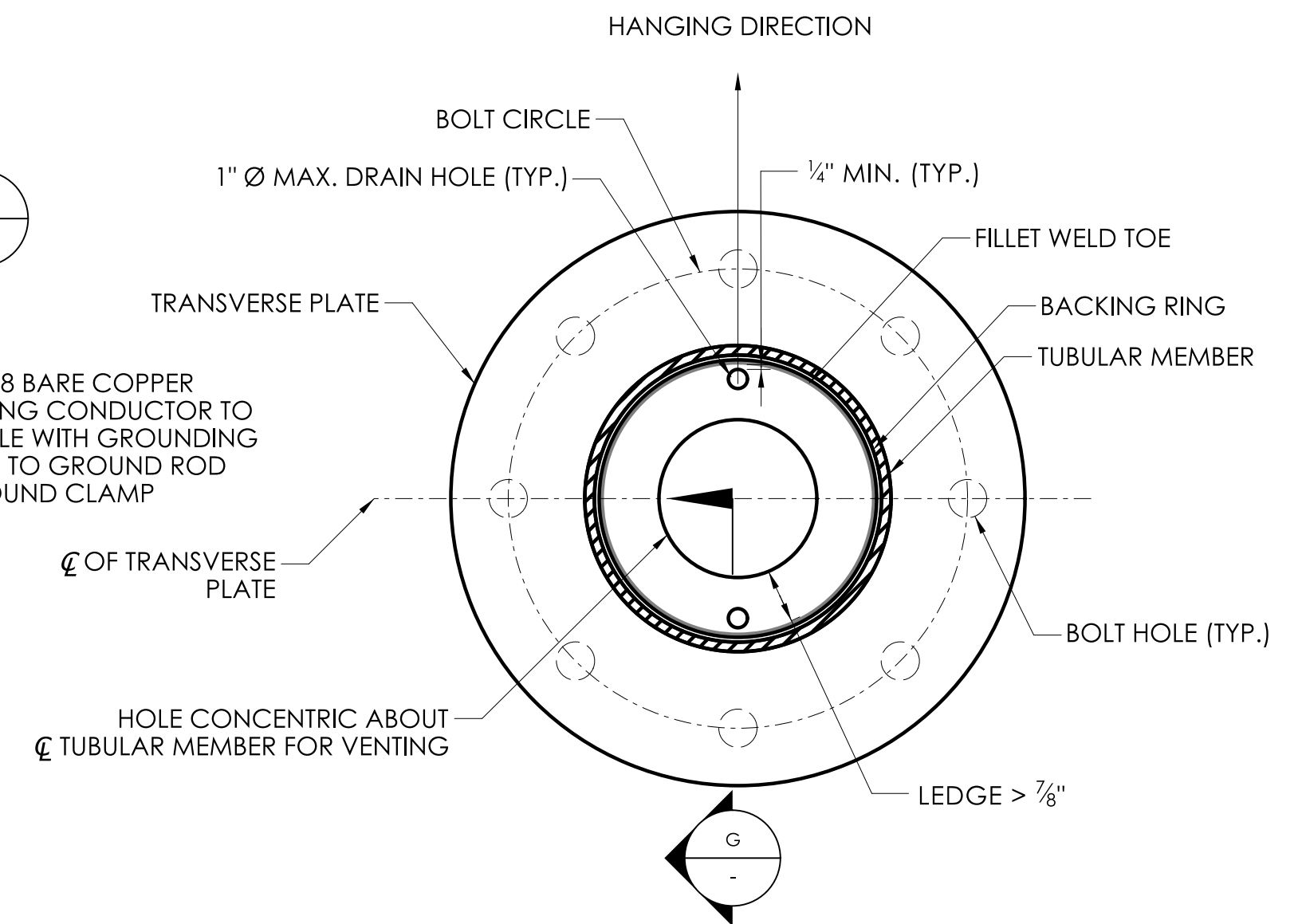
DETAIL
SCALE: 3/4" = 1'-0" MA-2



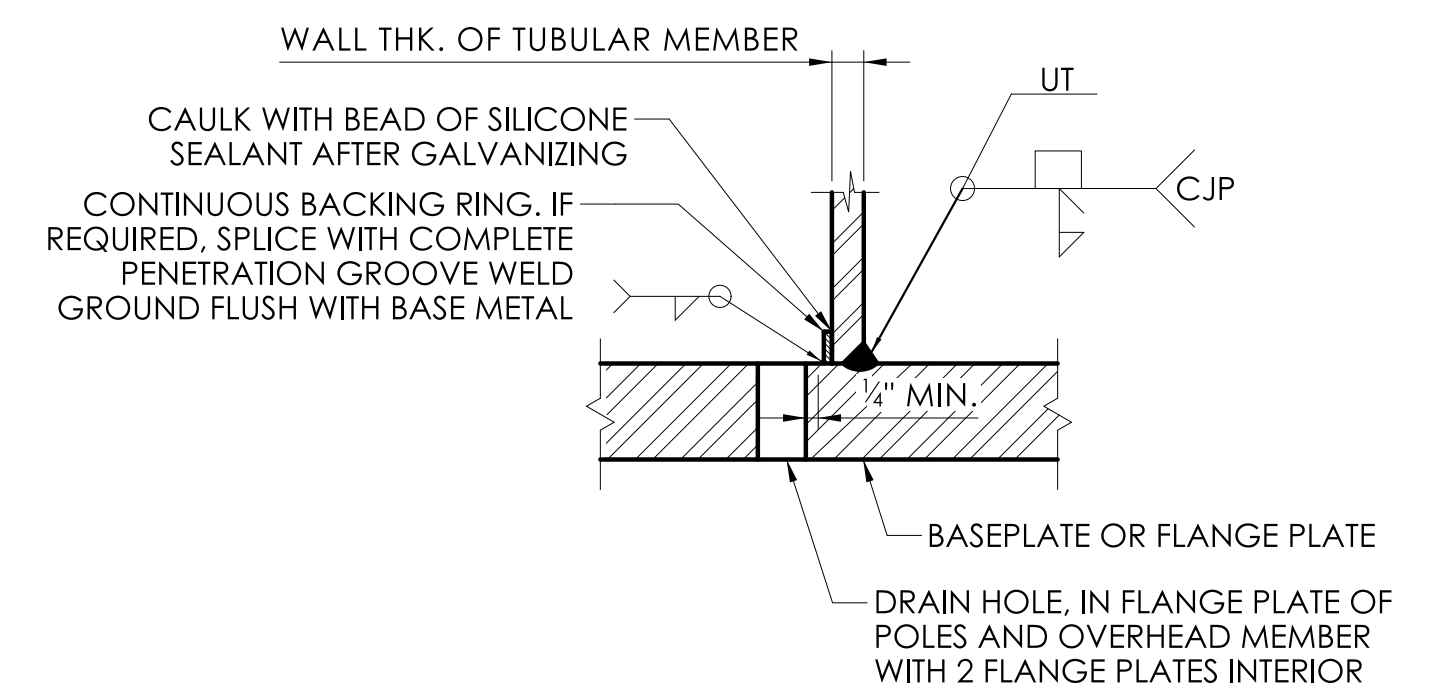
SECTION
SCALE: 3/4" = 1'-0" MA-2



DETAIL
SCALE: 1 1/2" = 1'-0" MA-2



TRANSVERSE PLATE DETAIL
SCALE: 1 1/2" = 1'-0" MA-2

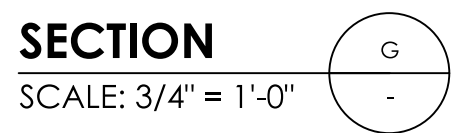
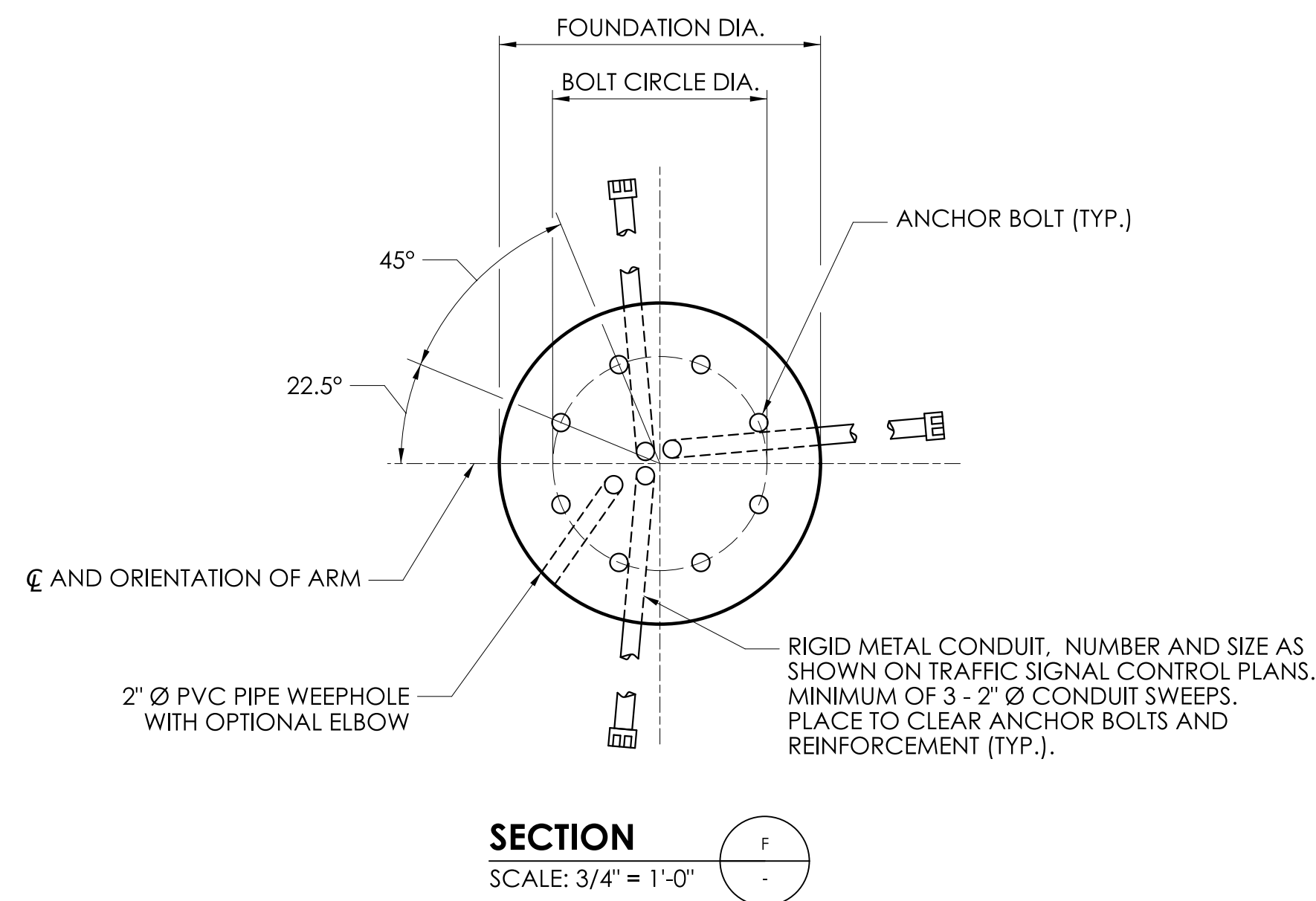


SECTION
SCALE: 3" = 1'-0" MA-2

REV.	DATE	REVISION DESCRIPTION

SIGNATURE BLOCK:	SCALE AS NOTED	 CONNECTICUT DEPARTMENT OF TRANSPORTATION	PROJECT TITLE:	TOWN(S):	DRAWING TITLE: STEEL MAST ARM ASSEMBLY DETAILS	PROJECT NO.:	DRAWING NO.: MA-3
DESIGNER/DRAFTER:	CHECKED BY:						SHEET NO.:

LASTED SAVED BY: FILE NAME:
PLOTTED DATE: 11/18/2025

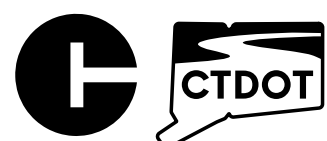


THE COST OF PREFORMED EXPANSION JOINT FILLER AND JOINT SEALANT SHALL BE INCLUDED FOR PAYMENT UNDER THE ITEM "CONCRETE SIDEWALK".

[illegible]

SIGNATURE BLOCK:	
DESIGNER/DRAFTER:	CHECKED BY:

SCALE AS NOTED



CONNECTICUT
DEPARTMENT OF
TRANSPORTATION

PROJECT TITLE:

TOWN(S):

DRAWING TITLE:

STEEL MAST ARM ASSEMBLY FOUNDATION DETAILS

PROJECT NO.:

DRAWING NO.:

MA-4

SHEET NO.: