

# AEC Applications

**William Pratt, P.E.**

Transportation Principal Engineer

[william.pratt@ct.gov](mailto:william.pratt@ct.gov)

## CAD/BIM Administration

**Mathew Calkins P.E.**  
[mathew.calkins@ct.gov](mailto:mathew.calkins@ct.gov)

**John Rinaldi**  
[john.rinaldi@ct.gov](mailto:john.rinaldi@ct.gov)

**Elaine Richard**  
[elaine.richard@ct.gov](mailto:elaine.richard@ct.gov)

**Yash Manandhar**  
[yash.manandhar@ct.gov](mailto:yash.manandhar@ct.gov)

**Tushar Gaddi**  
[Tushar.Gaddi@ct.gov](mailto:Tushar.Gaddi@ct.gov)

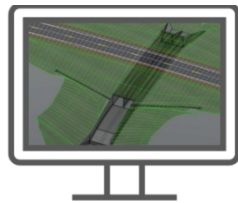
**Alvie Griffith**  
[alvie.griffith@ct.gov](mailto:alvie.griffith@ct.gov)

**Michael H. Antonio**  
[Michael.Antonio@ct.gov](mailto:Michael.Antonio@ct.gov)

**Gregory Sardinkas**  
[greg.sardinkas@ct.gov](mailto:greg.sardinkas@ct.gov)

**Mateusz Fortuna**  
[Mateusz.Fortuna@ct.gov](mailto:Mateusz.Fortuna@ct.gov)

CAD/BIM



Mobile Inspection



## Engineering and Construction GIS

**Henok Abdissa, P.E.**  
[henok.abdissa@ct.gov](mailto:henok.abdissa@ct.gov)

**Antonio Matta, P.E.**  
[antonio.matta@ct.gov](mailto:antonio.matta@ct.gov)

**Theodore Randich**  
[theodore.randich@ct.gov](mailto:theodore.randich@ct.gov)

**Saroeun E**  
[Saroeun.E@ct.gov](mailto:Saroeun.E@ct.gov)

**Huiya Yan**  
[huiya.yan@ct.gov](mailto:huiya.yan@ct.gov)



## Collaboration Systems Design Submissions

**Bruce Bourgoin P.E.**  
[bruce.bourgoin@ct.gov](mailto:bruce.bourgoin@ct.gov)

**John Dudzinski**  
[john.dudzinski@ct.gov](mailto:john.dudzinski@ct.gov)

**Julie Annino**  
[julie.annino@ct.gov](mailto:julie.annino@ct.gov)

**Justin Paprota**  
[Justin.Paprota@ct.gov](mailto:Justin.Paprota@ct.gov)

**Binita Shakya**  
[Binita.Shakya@ct.gov](mailto:Binita.Shakya@ct.gov)

