

Curb Ramp Resources & Activities

What is a curb ramp?

"A sloped connection that is cut through or built up to a curb. Curb ramps may be perpendicular or parallel to the curb or to the street they serve or be a combination thereof."

– US Access Board, PROWAG

What is formwork?

Concrete formwork is a frame or mold that holds wet concrete in place while it sets. Once concrete has set it cannot be adjusted.

Construction Formwork Activity

This interactive activity replicates what is constructed in the field for concrete curb ramp formwork. When setting up the formwork for a curb ramp and landing the frames can be adjusted for different elevations to achieve the necessary slopes required by ADA. This sample formwork has different ranges that can be checked with a digital level and adjusted as needed.

Materials Needed *"1/2 inch can make a huge impact on someone's life. The ADA requirements are in place for a reason."*

4 pieces of wood
4 foam blocks
Digital Level



Public Outreach

Partnerships & ADA Anniversary Event

CTDOT partners with many organizations for trainings and events, including the ADA Coalition of CT, CT ITE, UConn T2 Center, and WTS CT. The signature outdoor anniversary celebration and classroom event offers participants an opportunity to learn how individuals are improving accessibility and what resources are available, through speakers and exhibits.



ADA Transition Plan

ADA Transition Plans are required by law and provide a plan for the removal of physical barriers limiting accessibility in transportation systems and facilities. In 2024, CTDOT conducted eight public outreach events (in-person and virtual) to educate and encourage public feedback in CTDOT's Transition Plan Update. Featured activity from outreach included stickers for priority ranking.



Materials Needed

Sticker dots
ADA element sheets

CTDOT Sticker Voting – Priority Ranking Activity

How to Participate:

- We'll give you 4 stickers. These are your votes.
- There are different print outs labeled with respective elements included in the Transition Plan like "Sidewalks," "Bus Stops,"
- Place your stickers on the element/s that match what's most important to you for what should be the highest priority for CTDOT to improve accessibility?

Helpful Tip: Use all your stickers on one if it's a big priority or spread them across different areas.

CTDOT's Approach To ADA Trainings & Public Outreach



Goals for our exhibit are to shift perspective, build empathy and have some fun! Attendees will experience a set of situations that challenge their thinking and expand their understanding of the users of the transportation system. Our hope is that these experiences spark a conversation about the role empathy plays in transportation and that you bring back these experiences to your organization to enhance trainings and public outreach. Included in this brochure is a general overview of CTDOT's approach to:

- **ADA Training Exercises for Planning, Design, Construction & Maintenance**
- **Mobility Device Experience**
- **Partnerships & ADA Anniversary and Outdoor Classroom Event**
- **ADA Transition Plan**

For additional information and resources regarding the Americans with Disabilities Act (ADA), please visit CTDOT's website at:

<https://tinyurl.com/CTDOTADA-504>



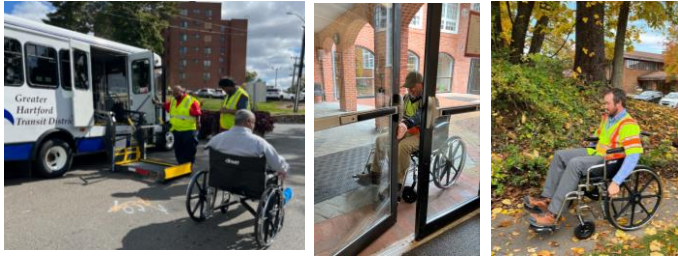
Questions? Email us:

DOT.ADATransitionPlan@ct.gov

Improving Lives Through Transportation

Mobility Device Experience

Wheelchairs can offer a person with a mobility, circulatory, respiratory, or neurological disability improved movement.



Specs
18-Inch
Seat
250-lbs



Specs
24-Inch
Seat
500-lbs

Where to find wheelchairs:

<https://tinyurl.com/ctdotsmallwheelchair>

<https://tinyurl.com/ctdotlargewheelchair>

Walking cane allows a person with visual impairments to probe the path of travel in front of them, identifying obstacles.

Where to find walking cane:

<https://tinyurl.com/ctdotwalkingcane>



Visual Impairment Simulation Goggles

Participants can try on various goggles which simulate different visual impairments to complete simple tasks, such as navigating a small space or identifying objects.

Impaired acuity

vision is not as sharp or clear as normal. A visual acuity of 20/20 is considered normal vision.

20/80, 20/200, 20/400, 20/800

Tunnel Vision

Simulates a constricted visual field similar to that caused by glaucoma or retinitis pigmentosa.



Hemianopia (Left or Right)

Simulates the loss of vision in the opposite side of both eyes due to damage to one side of the brain.



Scotoma

Simulates blind spots in the middle of a person's vision cause by various diseases such as age-related muscular degeneration.



Diabetic Retinopathy

Simulates damage to retina the part of eye that detects light and sends signals to brain through optic nerve caused by high blood sugar due to diabetes.

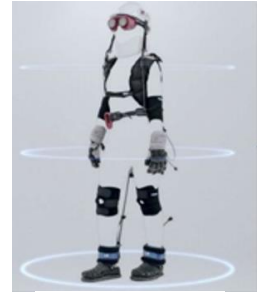


Featured goggles from Fork in the Road:

www.lowvisionsimulators.com

Simulator for Awareness and Mobility (S.A.M.)

S.A.M. was inspired by the Age Lab at MIT and its wearable suit, known as AGNES (Age Gain Now Empathy System), which simulates difficulty in movement through joint stiffness and muscle loss in the body.



AGNES Suit

Example S.A.M inspired by

AGNES of MIT:

www.age-simulation-suit.com

Materials to build your own pieces to build S.A.M

- Wheelchair
- Walking cane
- Vision goggles/blindfold
- Neck brace
- Elbow brace
- Wrist brace
- Knee brace
- Ankle weights



These activities are not meant to diminish the daily challenges faced by people with disabilities. To make the most effective impact, include members of the disability community in trainings and events to share their experiences.