



Office of Education and Data Management
Fall 2018 Career Development Seminar

October 2018

The Many Facets and Special Topics of the CSP FEIU

*Presented by
Richard Gregory, Detective
Connecticut State Police, Fire and Explosion Investigation Unit*



Connecticut State Police Fire & Explosion Investigation Unit

- Fire and Explosion Investigations (Fatal, arson and accidental)
- Accelerant Detection Canines
- Fireworks & Special effects
- Carnival and Amusement Park regulation, inspection & accidents
- Circus (Tent) inspections
- Crane accident investigations
- Directive 10 (Hoarding and code violations)
- Training of fire and police personnel





Transition From ...

**Office of State Fire Marshal “Bureau of
Investigations & Enforcement”**

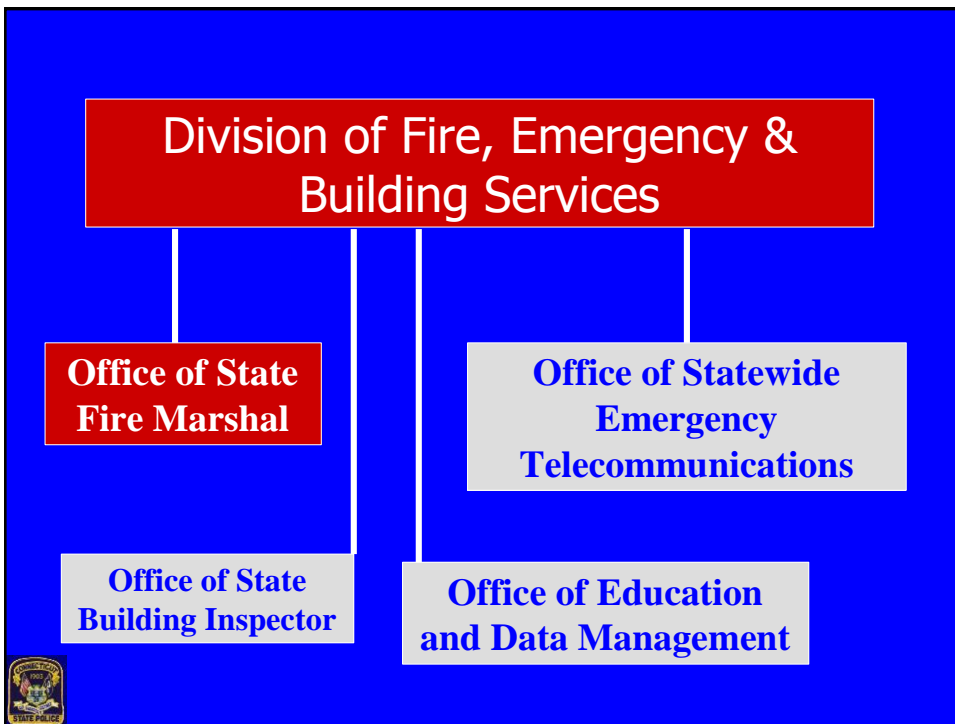
... to

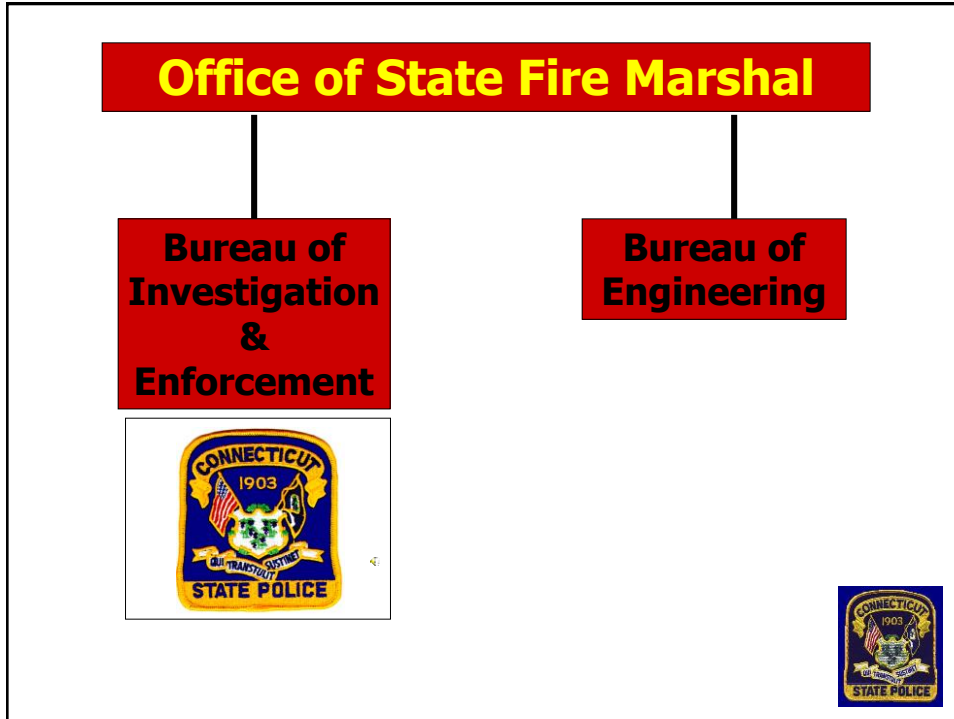
**Connecticut State Police
“Fire & Explosion
Investigation Unit”
(FEIU)**

Relevant History

- 1901 – CT Legislature Establishes Position of “State Fire Marshal”
 - Early emphasis on Fire Investigation
- 1903 – The Superintendent of State Police became the State Fire Marshal
- 1977 – The State Police Department is reorganized into the Department of Public Safety
 - The Commissioner of DPS is the State Fire Marshal
- 2011 – State Government Reorganized – “Consolidation of State Agencies”
 - Splits the former DPS and OSFM







**FIRE & EXPLOSION
INVESTIGATION UNIT**

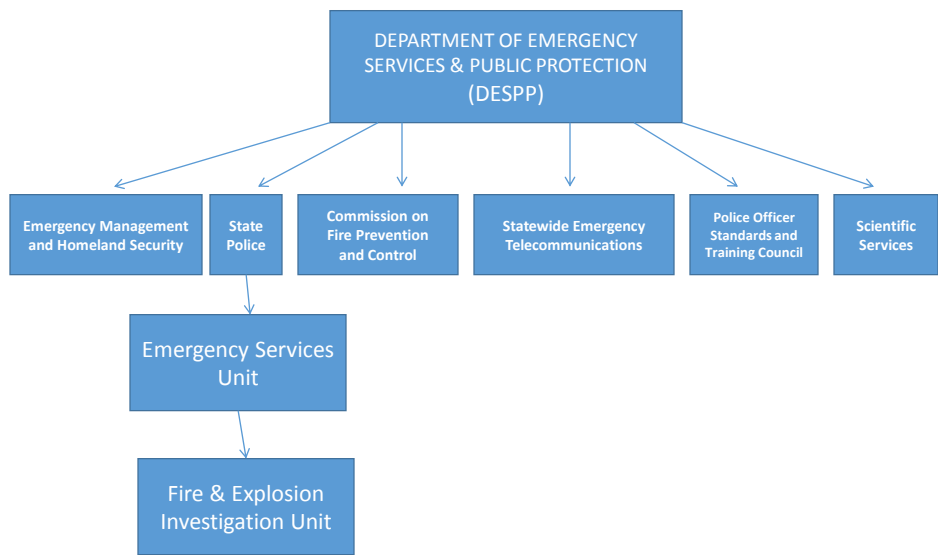
On July 1, 2011 the former
Bureau of Investigations & Enforcement
of the Office of State Fire Marshal became the
Fire & Explosion Investigation Unit
of the Connecticut State Police
under the
Department of Emergency Services
and Public Protection

OFFICE OF STATE FIRE MARSHAL

On July 1, 2011 the Department of Construction Services was created and as of July 1, 2013 has merged as a Division with the Department of Administrative Services

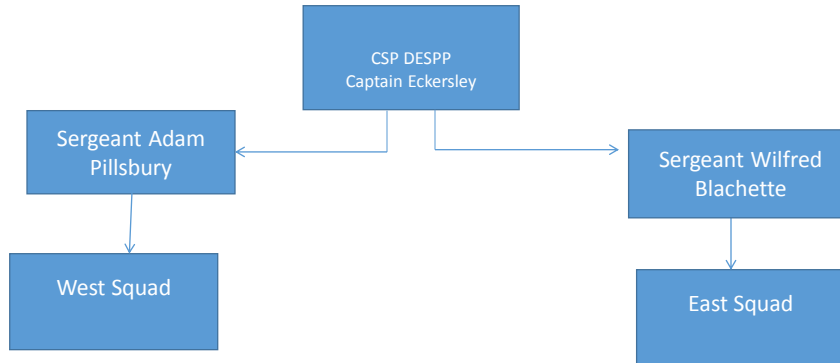
- the title of **State Fire Marshal** was transferred from the Commissioner of the Department of Public Safety
- to an appointed position under Commissioner of the Department of Administrative Services, Division of Construction Services

ORGANIZATIONAL STRUCTURE



FIRE & EXPLOSION INVESTIGATION UNIT

269 Maxim Road, Brainard Airport
 Hartford, Connecticut
 Office: (860) 706-5600 Fax: (860) 706-5619
 24 hours: (800) 842-0200 or (860) 685 8190
 email: despp.feiu@ct.gov



I. & E. AGENCY RESPONSIBILITIES

Prior to July 1, 2011

- Fire Origin & Cause Investigations
- Accelerant Detection Canines
- Post Blast Investigations
- Explosive Detection Canines
- L. P./Natural Gas Explosions
- Explosives and Blasting Regulations



I. & E. AGENCY RESPONSIBILITIES

Prior to July 1, 2011 (Continued)

- Fireworks and Special Effects Inspections - Enforcement and Accident Investigations
- Carnival Inspections/Accident Investigations
- Circus Inspections
- Crane/Hoisting/Demo Investigations/Violations
- Training of fire and police personnel



FEIU RESPONSIBILITIES

July 1, 2011 to Present

- Fire Origin & Cause Investigations (29-302/29-310)
- Accelerant Detection Canines (29-302/29-310)
- Post Blast Investigations (29-302/29-310)
- Explosive Detection Canines (29-302/29-310)
- L. P./Natural Gas Explosions (29-302/29-310)
- Explosives and Blasting Regulations (SB 929)



FEIU RESPONSIBILITIES

July 1, 2011 to Present (Continued)

- Fireworks and Special Effects Inspections -Enforcement and Accident Investigations (SB 929)
- Carnival Inspections/Accident Investigations (MOU)
- Circus Inspections (MOU)
- Crane/Hoisting/Demo Investigations/Violations (MOU)
- Training of fire and police personnel (MOU)



FEIU RESPONSIBILITIES

▪ THEN

- Fire Origin & Cause Investigations
- Accelerant Detection Canines
- Post Blast Investigations
- Explosive Detection Canines
- L. P./Natural Gas Explosions
- Explosives and Blasting Regulations
- Fireworks and Special Effects Inspections -Enforcement and Accident Investigations

▪ NOW

- Fire Origin & Cause Investigations
- Accelerant Detection Canines
- Post Blast Investigations
- Explosive Detection Canines
- L. P./Natural Gas Explosions
- Explosives and Blasting Regulations
- Fireworks and Special Effects Inspections-Enforcement and Accident Investigations



FEIU RESPONSIBILITIES

▪ THEN

- Carnival Inspections/Accident Investigations
- Circus Inspections
- Crane/Hoisting/Demo Investigations/Violations
- Training of fire and police personnel

▪ NOW

- Carnival Inspections/Accident Investigations
- Circus Inspections
- Crane/Hoisting/Demo Investigations/Violations
- Training of fire and police personnel
- Directive 10 (New)



OFFICE OF THE STATE FIRE MARSHAL TODAY

• **Mission Statement:**

“The Office of State Fire Marshal is part of the Department of Administrative Services This office is responsible to promulgate and enforce codes, standards and regulations to reduce the harm associated with fires, explosions, and mechanical failures. Connecticut General Statutes Chapter 541, Section 29-291 gives the statutory authority to the Office of State Fire Marshal”



FEIU / OSFM RELATIONSHIP

- Everything that was, remains intact through an MOU between the 2 agencies:
 - OSFM supports FEIU with investigations by providing technical experts
 - Gas
 - Electrical
 - Code



FEIU / OSFM RELATIONSHIP

- Everything that was, remains intact through an MOU between the 2 agencies:
 - FEIU supports OSFM with investigative and enforcement support as well as instruction
 - 29-224 - Cranes
 - 29-262 – Complaints against B.O.'s
 - 29-298b – Complaints against F.M.'s
 - 29-402 – Demolition
 - Enforcement relative to codes including Administrative Warrants
 - Cert Class, Re-cert, In-Service, & Advanced Fire Investigation Training





RELEVANT STATE STATUTES

29-302

29-310

Section 29-302 of C.G.S.

Sec. 29-302. (Formerly Sec. 29-49). Investigations.

The local fire marshal **shall**, in accordance with the provisions of section 29-311, investigate the cause, origin and circumstances of any fire or explosion within his jurisdiction, by reason of which property has been destroyed or damaged, or any person injured or killed, or any incidents which threatened any property with destruction or damage or any person with injury or death by reason of fire or explosion, and shall especially investigate whether such fire was the result of an incendiary device or the result of carelessness, design or any criminal act; and the State Fire Marshal, or the deputy fire marshal under his direction, may supervise and direct such investigation.



OCTOBER 2013

“...and the State Fire Marshal, or the deputy fire marshal under his direction, may supervise and direct such investigation.”

A concern is voiced by some in the local fire marshal community that this language brings into question the legal authority of state troopers assigned to FEIU to conduct origin and cause investigations under this statute



DESPP – LEGAL AFFAIRS

- Conducts a legal review and renders opinion and suggested course of action:
 - As written DESPP (State Troopers) no longer have statutory authority under 29-302 to conduct O & C investigations
 - This statute, along with MANY others, was overlooked and not changed to keep up with the changes in state government
 - Propose statutory change to reflect original intent of SFM's responsibilities for fire investigations



C.G.S. 29-310

THE COMMISSIONER OF EMERGENCY SERVICES AND
PUBLIC PROTECTION **SHALL** INVESTIGATE THE
CAUSE AND ORIGIN OF ALL FIRES AND EXPLOSIONS
BROUGHT TO HIS ATTENTION

(They remembered to change this one!)



C.G.S. 29-310

- DESPP has had this authority since 1949
- FEIU
 - 2 Sergeants
 - 8 Detectives
 - 2 Investigative Vans
 - FEIU doesn't have the resources, the manpower, or THE DESIRE to take original jurisdiction over all fire investigations.
- NEVER the intent of the proposed language change to 29-302





SUMMARY

- Proposed language change to 29-302 was DESPP’s legal staff’s reaction to a concern voiced by LFM community
- Proposed change was in accordance with the historical intent of the State Fire Marshal’s legal authority under 29-302 as the Commissioner of Public Safety
- FEIU’s role as an “Assisting” resource to Local Fire Marshals has not changed



New to the FEIU



Directive 10 (Order to vacate)

C.G.S. 29-306 (c)



C.G.S 29-306 (c)

- Local Fire Marshal or Police Officer determines risk of death or injury from:
- Blocked egress (Hoarding)
- Failure to maintain fire alarm / sprinkler system
- Storage of flammable or explosive material in excess of permitted allowance
- Use of pyrotechnics or fireworks w/o permit
- Exceeding the occupancy level



C.G.S 29-306 (c)

Local Authority may issue a written or verbal order to vacate if the above mentioned conditions cannot be abated within **4 hours**

Notification to me made to the State Fire Marshal
(FEIU)



C.G.S 29-306 (c)

Upon notification, the State Fire Marshal **(FEIU)** shall review such order to vacate

After consultation with the local authority, **FEIU** will determine whether to uphold, modify or reverse such order



REMEMBER:

- Legal entry (hoarding cases are usually exposed during EMS / Fire Department notification or required inspections by the local FMO)
- Once an order to vacate is issued, the Town is obligated to find temporary housing for the occupant(s)



Amusements

**Fixed
&
Traveling**



Amusement Inspections

- C.G.S. 29-129 – Licenses issued by the Commissioner of the Department of Consumer Protection (DCP)
- C.G.S. 29-132 – Inspections and Certification of Amusement Rides and Devices
 - Commissioner of DCP *shall* approve one or more qualified inspectors / engineers to perform annual inspections



Amusement Inspections

C.G.S 29-136(a) –Investigation and Inspections,
Reporting of Serious Injury or Death



C.G.S. 29-136

- Commissioner of DCP *or* designee (FEIU) *shall* investigate and cause to be inspected all equipment, paraphernalia, mechanical rides and devices in it's full location
- *Shall* determine whether or not such amusement will be ***reasonably safe*** for public attendance
- *May* make reasonable orders concerning alterations, additions or betterments



NOTE:

It is not advisable to go against the ride manufacturers' specifications or recommendations

Any dispute between the inspector and ride owner / foreman are usually settled with a phone call to the manufacturer at the time of the inspection



C.G.S. 29-136(b) Serious physical injury or death

- Owner of amusement ***shall*** (within **4 hours** of it's occurrence) report the occurrence to the Commissioner or the Commissioner's designee (FEIU)

Note: notification will normally occur at the time of the incident or shortly thereafter via

- call to the message center
- Direct call from the owner
- Local Police and / or FD



C.G.S. 29-136(b) Serious physical injury or death

The Commissioner of the DCP or designee (FEIU) ***shall*** cause an investigation of the occurrence and an inspection of such ride or device to determine cause of such injury or death

Unless authorized by DCP or FEIU, no ride or device shall be **operated** or **removed** from the location of the occurrence for **72 hours**.

AMUSEMENT INSPECTION PRESENTATION

41

CASE STUDY

42



Use of OEDM Training Materials

Use of Office of Education and Data Management (OEDM) training materials must be approved in writing by the State of Connecticut, Department of Administrative Services' Office of Communications. In approving of such use, the State of Connecticut assumes no liability associated with such use, including, but not limited to, the user's dissemination of any inaccurate information or interpretation in connection with its use of these training materials. Use of the training materials is at the sole risk of the user, and the State's approval of the use does not constitute an endorsement of the user or its intended use.

43

THANK YOU

Detective Richard Gregory #1380
Connecticut State Police
Fire & Explosion Investigation Unit

269 Maxim Road
Hartford, CT 06114

Office: (860)706-5600
Cell: (860)625-5691

Message Center: (860)685-8190
24 hours

44

