

# **National Data Show High Teen Crash Rates**

Crash Rates are Very High:

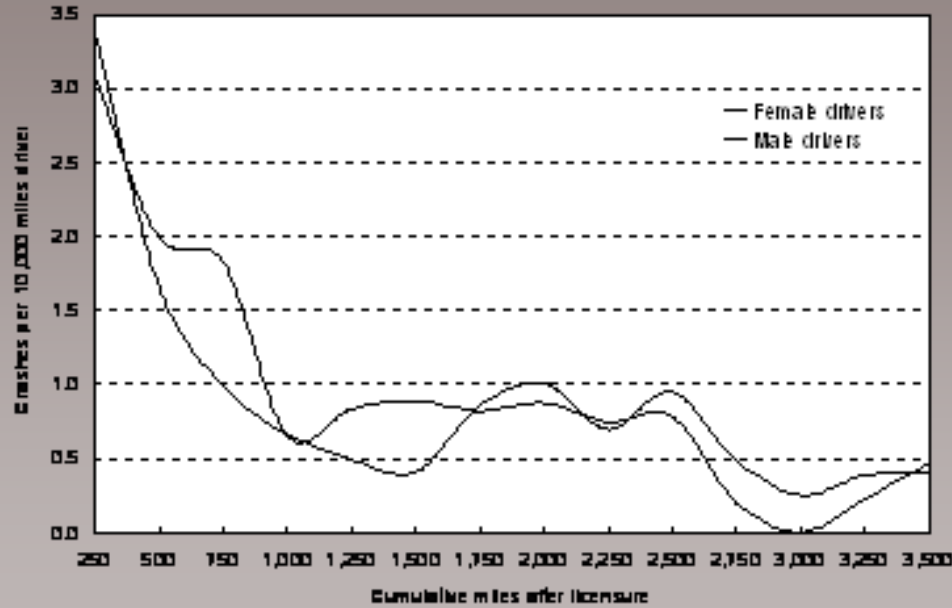
During first few months/miles of driving

At night

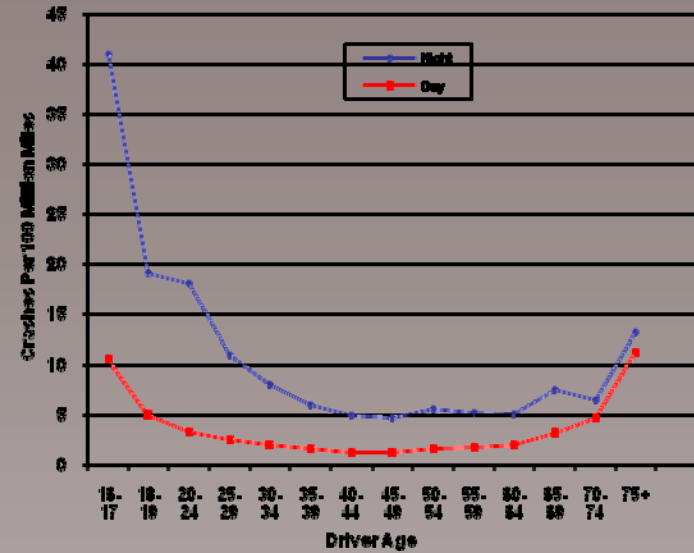
With teenage passenger

With alcohol

## Crash Rates First Few Miles of Driving after Licensure



## Fatal Crash Rates Day VS. Night (9pm-5am)



## Crash Risk and Passengers

Driver Age	Alone	Passenger(s)
16	2.28	4.72
17	1.77	3.52
18	1.77	3.66
19	1.61	3.23
20-24	1.50	2.54
25-29	1.28	1.69
30-59	1.00	1.00

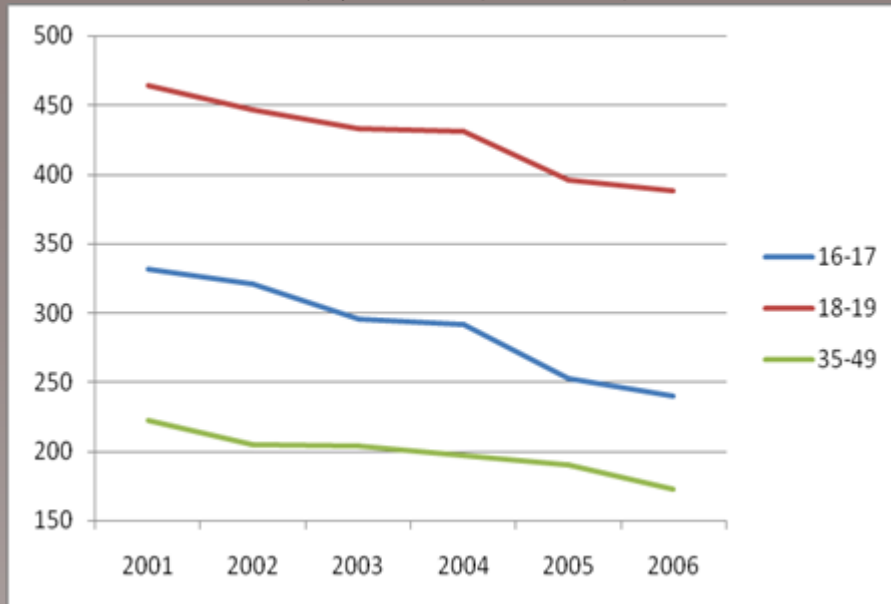
## Crash Risk by Age and BAC

AGE	Blood Alcohol Concentration								
	00	01	02-03	04-05	06-07	08-09	10-14	15-19	20+
16-20	3.31	4.37	4.12	5.44	8.17	10.10	15.77	25.30	28.19
21-24	1.79	2.18	2.59	4.42	6.11	8.13	10.73	16.43	26.00
25-34	1.25	1.38	1.89	2.32	2.94	4.37	7.27	11.61	16.08
35-49	1.00	1.09	1.49	1.78	2.62	3.56	5.64	10.44	16.99
50-64	1.02	0.93	1.17	1.24	2.03	2.23	4.71	8.48	13.24
65 +	2.04	1.97	2.49	2.50	2.50	3.55	4.83	7.48	9.48

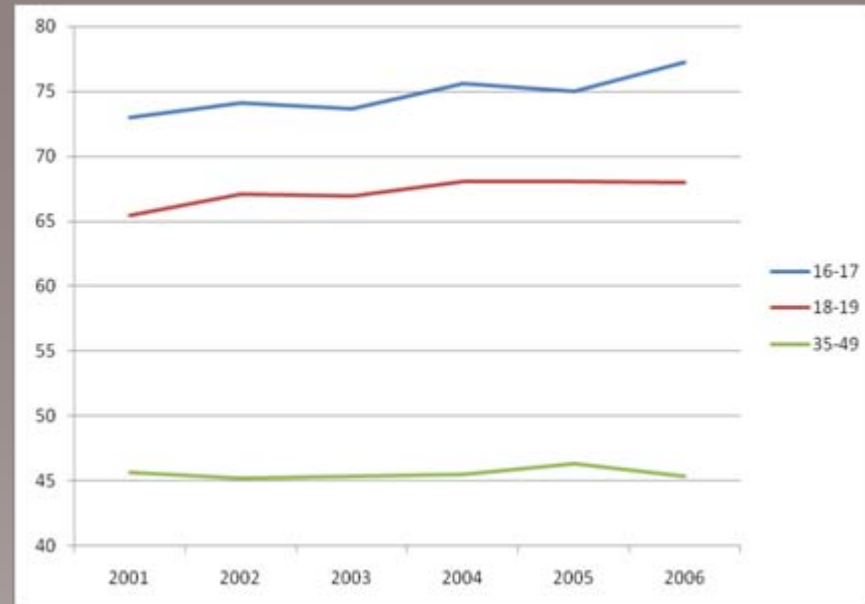
# Connecticut Crash Data 2001-2006\*

- Crash rate per 10k population for 16-17 year-olds is fifty percent higher than the crash rate for 35-49 year-olds (despite the fact that many in this age group are not yet licensed).
- Crash rate per 10k population for 18-19 year-olds is one hundred percent higher than the crash rate for 35-49 year-olds.
- Approximately 75% of 16-17 year-olds were judged at fault in crashes; 68% of 18-19 year-olds; as compared with only 45% of 35-49 year-olds.
- When a teen is at fault, the most common reasons are following too closely and speed.
- Many teen crashes occur between the hours of 9pm and midnight.

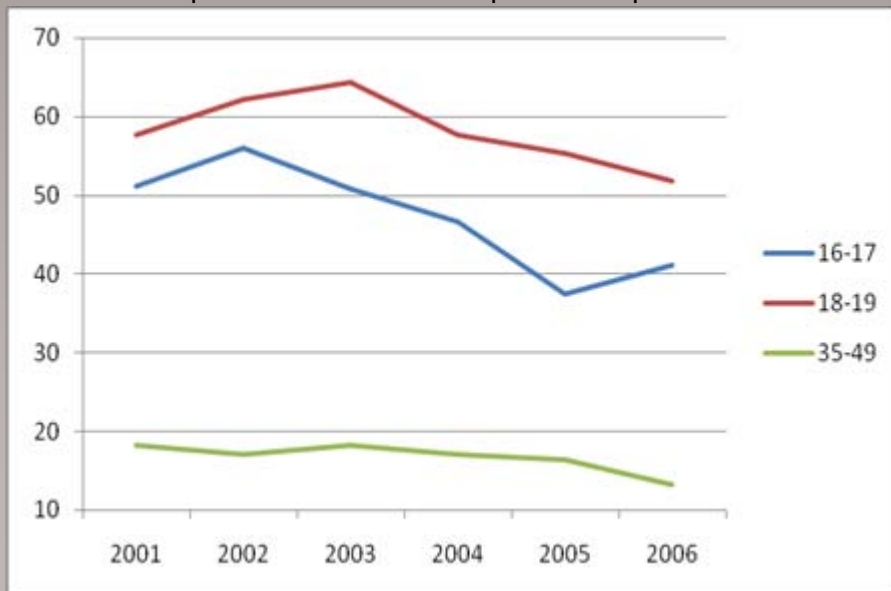
Overall Injury Crashes per 10k Population



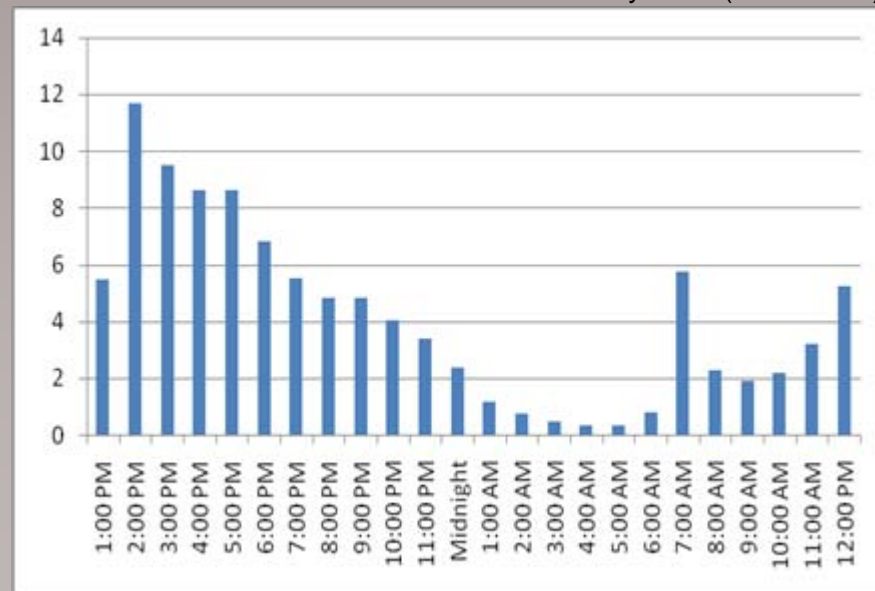
Percent of Drivers Considered "At-Fault"



Speed Related Crashes per 10k Population



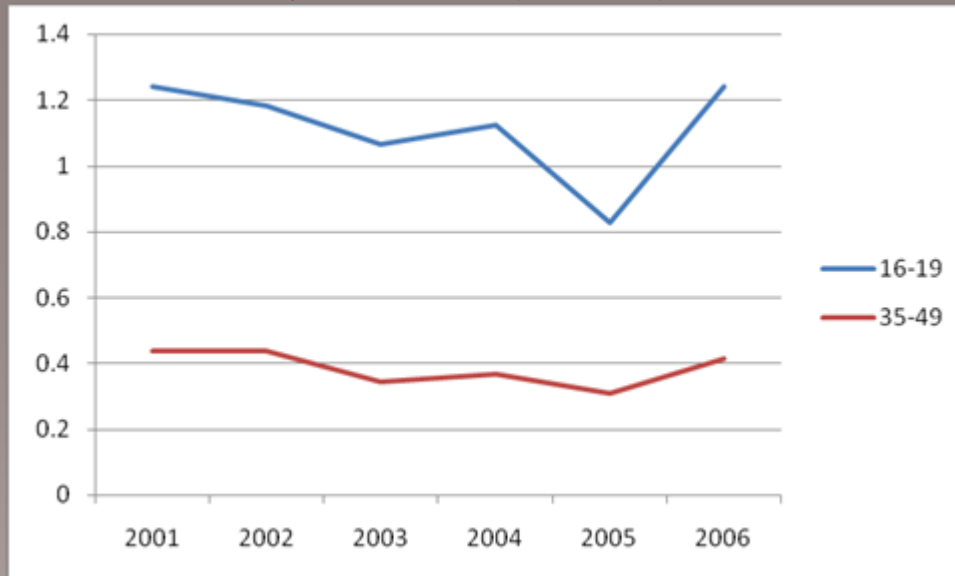
Percent of 16 and 17 Year Old Driver Crashes by Hour (2001-2006)



# Fatal Crashes in Connecticut

- Teen drivers (ages 16-19) die in fatal motor vehicle crashes at a rate which is three times the rate for drivers ages 35-49
- Teen drivers are involved in fatal crashes at a rate which is two to three times the rate for drivers ages 35-49.

Fatality Rate of Drivers per 10k Population



Drivers Involved in Fatal Crashes per 10k Population

