



CT DOT MS4 Program and MS4 Mapping

SERC

January 19, 2023

“MS4”



- Municipal Separate Storm Sewer System (MS4)
- EPA Clean Water Act (1972)
- EPA Regulates MS4 Phase I (1990)
 - Population > 100,000
- EPA Regulates MS4 Phase II Rules (1999)
 - Population <100,00 (Small MS4s)
- CTDEEP Issues Phase II Permits (2004)



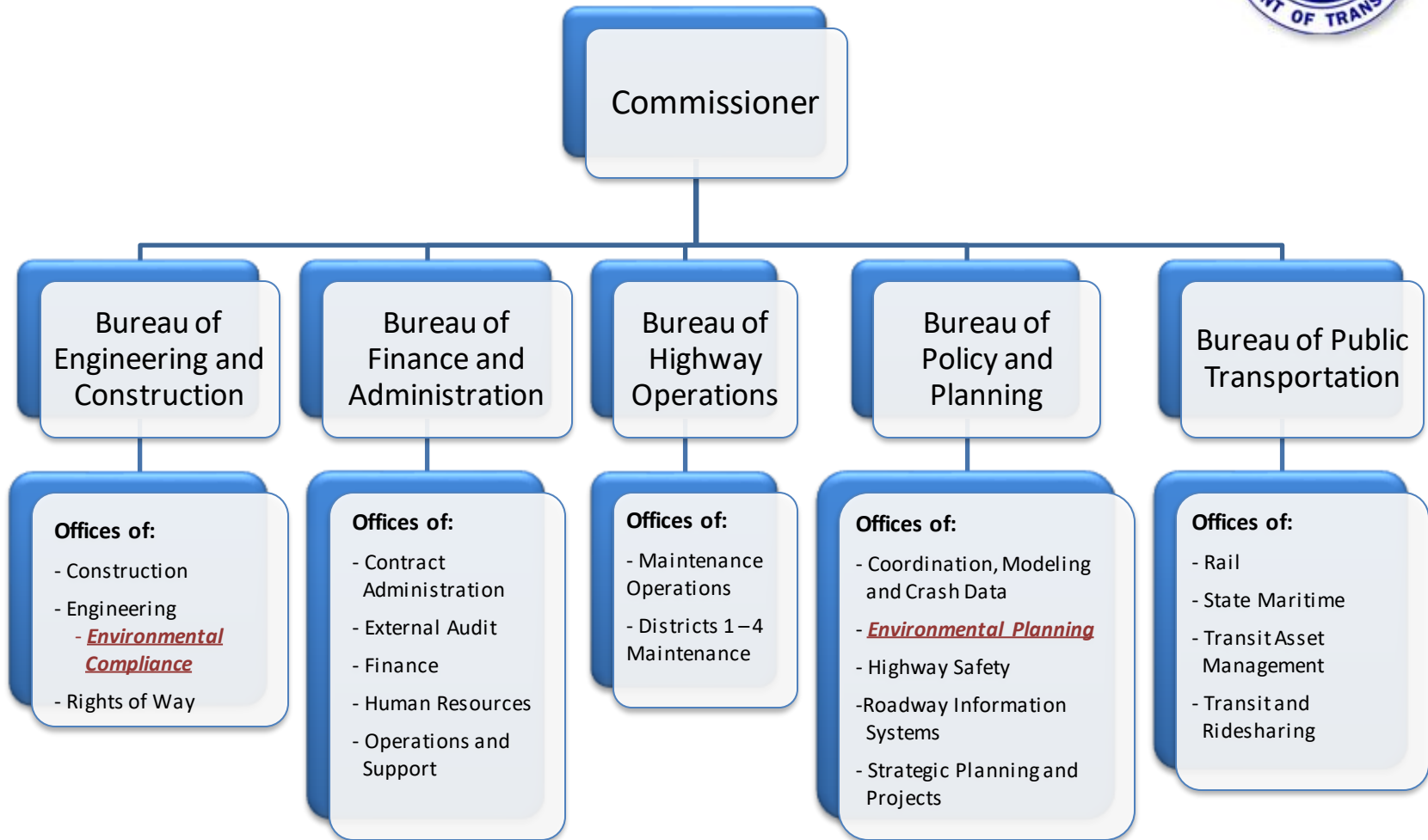
“MS4”



- 121 Municipalities in Connecticut qualify and are regulated under DEEP’s Small MS4 general permit
 - 48 towns do not have the population density to qualify
 - Other government Institutions above a certain size
- CT DOT considered a “Non-Traditional” municipality under MS4
 - DEEP issued “General Permit for the Discharge of Stormwater from Department of Transportation Separate Storm Sewer Systems ” in 2018, effective June 2019



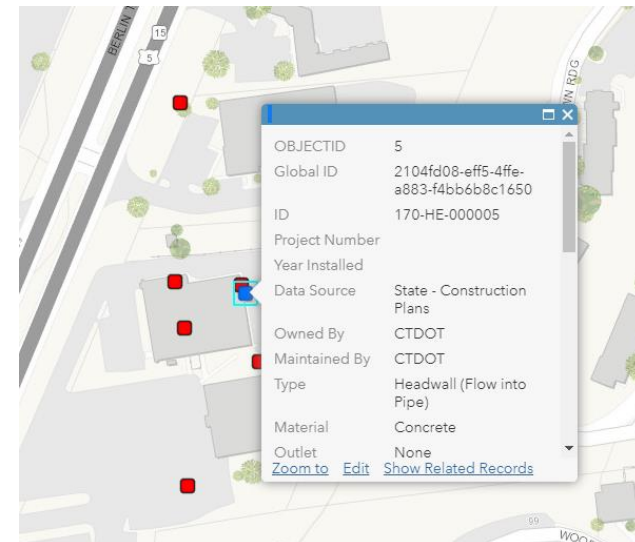
CTDOT MS4 Team



Stormwater System Mapping



- All regulated MS4's are required to map their storm sewer system
 - Pipes and Swales
 - Catch Basins and Manholes
 - Detention/Retention Ponds
 - Other Storage and Treatment
 - Discharge Outfalls
- Regardless of regulatory requirements, still a good idea
 - “Asset Management”
 - “State of Good Repair”
 - Upkeep and Maintenance
 - Lifecycle and Replacements
 - And....



Stormwater System Mapping



- Spill Response!
 - Control the hazard
 - Limit the environmental harm/clean-up
 - Where's the outfall to the waterbody? → boom deployment
 - Are there other structures along the way? → intercept at a manhole

Stormwater System Mapping



Mapping DOT's Stormwater System

- Started from scratch
- Mapping Standardization
 - COG's GIS Standards Committee
- Mapping format available for public use

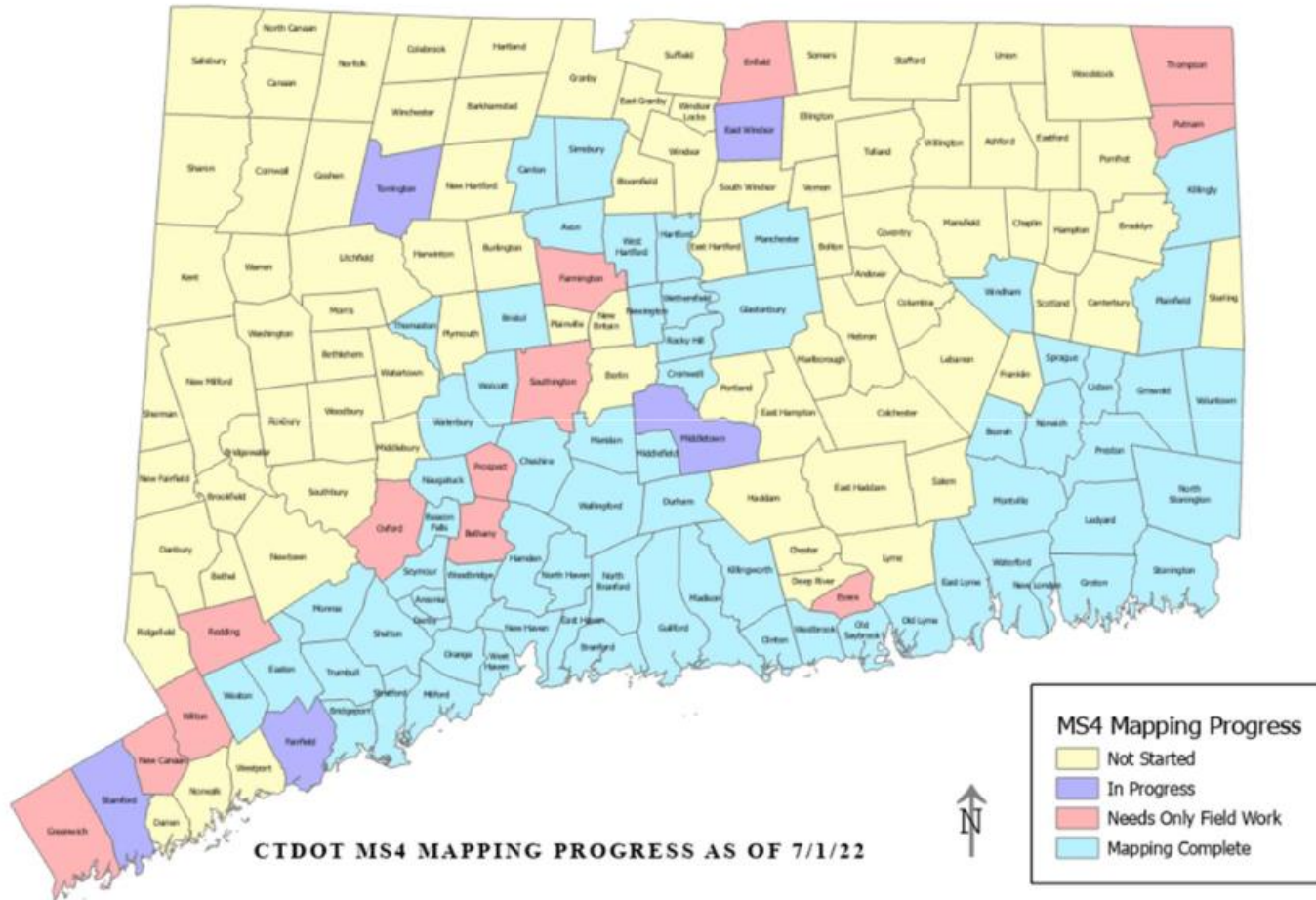


Stormwater System Mapping



- CTDOT storm sewer mapping
 - Town-by-Town approach
 - Conversion/digitization of best available construction plans
 - Field verified to the maximum extent practical
 - 63 out of 121 towns completed and published to date
 - ~half done
 - Remainder at least by 2029

Stormwater System Mapping



Stormwater System Mapping



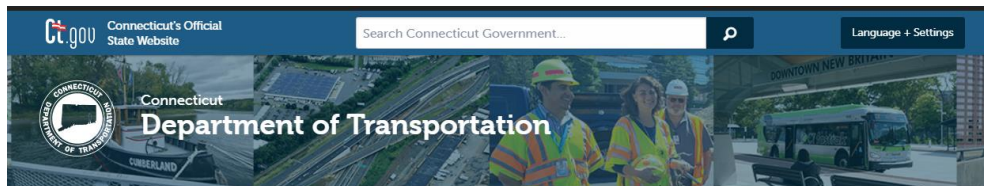
- What do we map?
 - CTDOT pipes, outfalls, manholes, catch basins, etc.
- What haven't we mapped?
 - Municipally-owned pipes, outfalls, structures, etc.
 - Privately-owned pipes, outfalls, structures, etc.

Stormwater GIS Map



Mapping DOT's Stormwater System

- Progress to Date
 - Apprx. 50% of State is mapped
 - 50% required by June 2024
- Reference Guide available on [CTDOT MS4 Webpage](#)



CT.gov Home / Department of Transportation / CTDOT MS4

- A to Z Index >
- About CTDOT >
- CTDOT FAQs >
- CTDOT Fast Facts >
- Highways and Bridges >
- Transit - Bus, Train, Ferry >
- Bicycles and Pedestrians >
- Road Signs, Pavement Markings, Signals >
- Environmental Planning >
- Major Projects >
- Traffic Count Data >
- Traveling in Connecticut >

CTDOT MS4 (CTDOT's Stormwater Quality Management Program)



As of July 1, 2019, the Connecticut Department of Transportation (Department) is subject to the goals and requirements of a stormwater discharge permit that aims to reduce the amount of pollution discharged to the state's surface waters and wetlands.

DOT Related Links

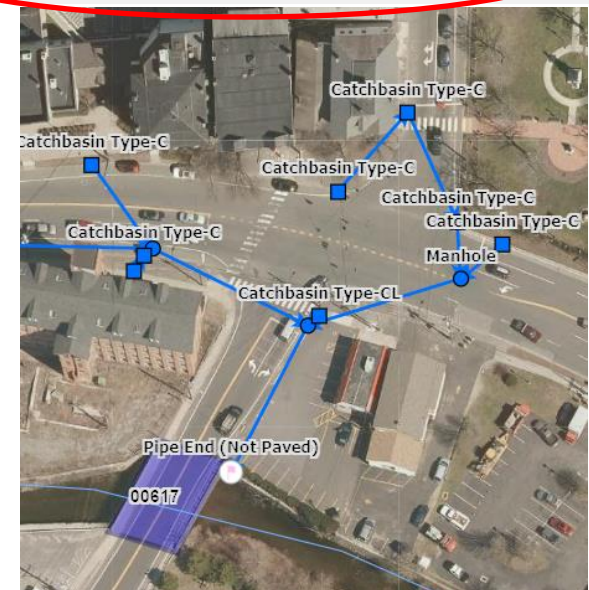
[Water & Noise Compliance Webpage](#)

[Hydraulics and Drainage Webpage](#)

[Environmental Compliance Webpage](#)

[CTDOT MS4 GIS Database Maintenance Guide](#)

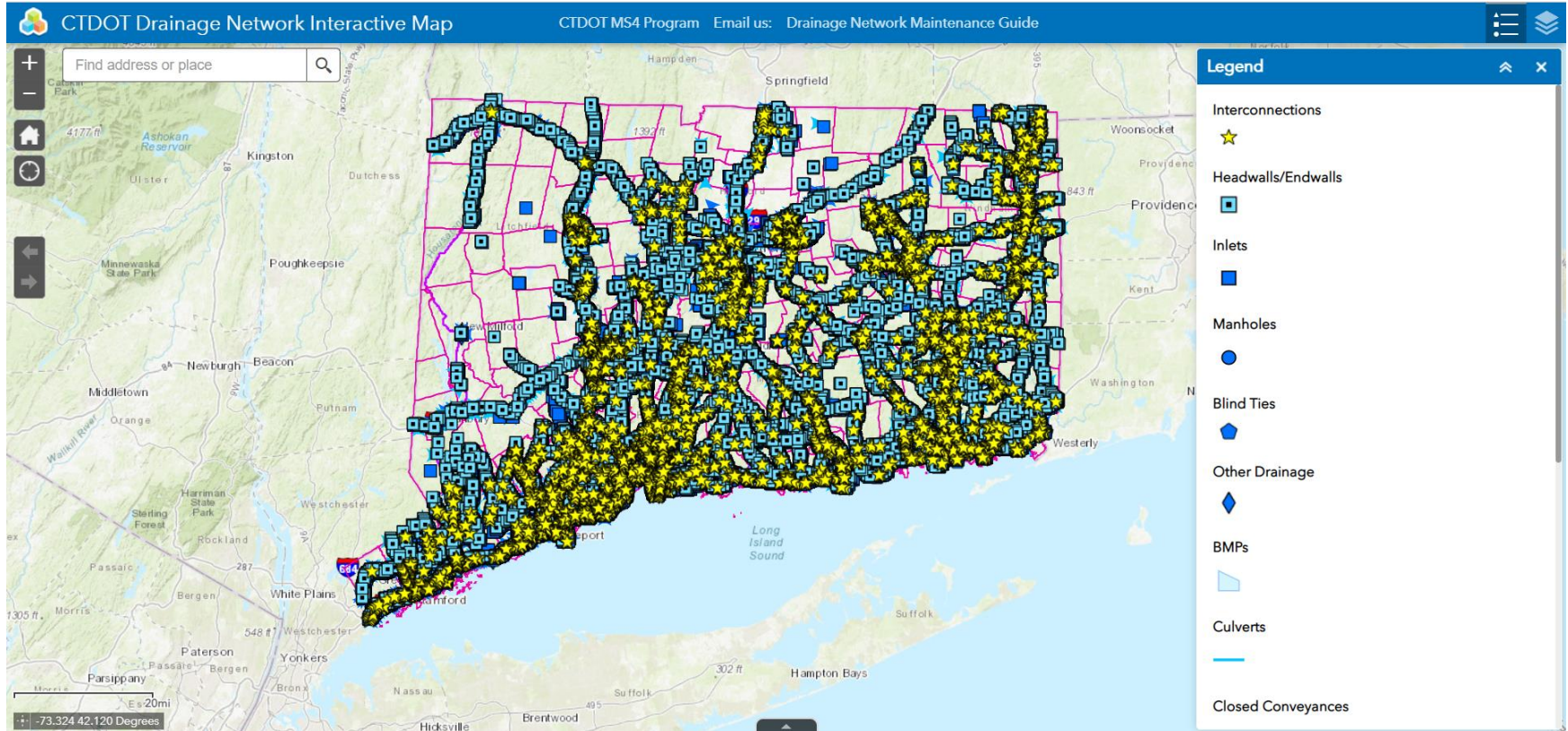
[CTDOT MS4 Drainage GIS Map](#)



Catchment Area



Live walk through



Drawbacks and Caveats



Limitations

- Information from construction plans may not be 100% accurate
- New construction, mapping lags
- Private property → CT DOT system
- Municipal system → CT DOT system
- Data disclaimers

Wish list/Next Steps?



- Integrate with Town mapping data
- Challenges – no set standard
 - Paper map? Perfectly acceptable...
 - Perfect integration means using the same schema
 - Imperfect integration means....
 - Links to municipal maps



Questions ?

DOT.MS4@ct.gov

Jason.Coite@ct.gov

Daniel.Imig@ct.gov