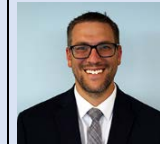


# The Talent Office

860-713-6820



**Dr. Shuana Tucker**  
860-713-6848  
[shuana.tucker@ct.gov](mailto:shuana.tucker@ct.gov)  
Chief Talent Officer



**Christopher Todd**  
860-713-6816  
[christopher.todd@ct.gov](mailto:christopher.todd@ct.gov)  
Bureau Chief



**Kimberly Audet**  
[kimberly.audet@ct.gov](mailto:kimberly.audet@ct.gov)  
860-713-6829  
Education Consultant  
Professional Learning  
MTR



**Katie Moirs**  
[katie.moirs@ct.gov](mailto:katie.moirs@ct.gov)  
860-713-6733  
Education Consultant  
Educator Preparation



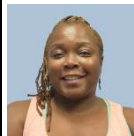
**Kaylan Ricciardi**  
[kaylan.ricciardi@ct.gov](mailto:kaylan.ricciardi@ct.gov)  
860-713-6864  
Education Consultant  
Certification



**Patricia Wilson**  
860-713-6735  
[patricia.wilson@ct.gov](mailto:patricia.wilson@ct.gov)  
Education Consultant  
Certification



**Julianne Frost**  
[Julianne.Frost@ct.gov](mailto:Julianne.Frost@ct.gov)  
860-713-6727  
Education Consultant  
Certification



**Janet Montague**  
[janet.montague@ct.gov](mailto:janet.montague@ct.gov)  
860-713-6824  
Support Staff  
Bureau of Educator  
Effectiveness



**LaShawn Smith**  
[lashawn.smith@ct.gov](mailto:lashawn.smith@ct.gov)  
860-713-6718  
Support Staff  
Certification



**Sharon Fuller**  
[sharon.fuller@ct.gov](mailto:sharon.fuller@ct.gov)  
860-713-6814  
Education Consultant  
Educator Evaluation and  
Support



**Arlene Morrissey**  
[arlene.morrissey@ct.gov](mailto:arlene.morrissey@ct.gov)  
860-713-6726  
Associate Education  
Consultant  
Certification



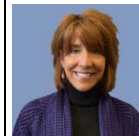
**Nancy Velez**  
[nancy.velez@ct.gov](mailto:nancy.velez@ct.gov)  
860-713-6721  
Administrative Assistant  
Certification



**Charles Hart**  
[charles.hart@ct.gov](mailto:charles.hart@ct.gov)  
860-713-6730  
Education Consultant  
Certification



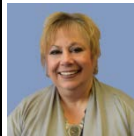
**Mirta Ortega**  
[mirta.ortega@ct.gov](mailto:mirta.ortega@ct.gov)  
860-713-6720  
Support Staff  
Certification



**Kim Wachtelhausen**  
[kim.wachtelhausen@ct.gov](mailto:kim.wachtelhausen@ct.gov)  
860-713-6841  
Education Consultant  
Equity Plan  
Recognition Programs



**Wendy Harwin**  
[wendy.harwin@ct.gov](mailto:wendy.harwin@ct.gov)  
860-713-6734  
Education Consultant  
Certification



**Claudine Primack**  
[claudine.primack@ct.gov](mailto:claudine.primack@ct.gov)  
860-713-6826  
Education Consultant  
TEAM  
Communications



**Gady Weiner**  
860-713-6836  
[gady.weiner@ct.gov](mailto:gady.weiner@ct.gov)  
Associate Education  
Consultant  
TEAM Data Manager



**Lystra Julien**  
[lystra.julien@ct.gov](mailto:lystra.julien@ct.gov)  
860-713-6552  
Education Service Specialist  
Certification



**Jayne Smalls-Brooks**  
[jayne.brooks@ct.gov](mailto:jayne.brooks@ct.gov)  
860-713-6808  
Support Staff  
Certification



**Margaret Wilson**  
[margaret.wilson@ct.gov](mailto:margaret.wilson@ct.gov)  
860-713-6712  
Support Staff  
Certification

