



# Student Assessment News

Connecticut State Department of Education • Performance Office

July 29, 2020

[Archived Student Assessment News](#)  
[CTStudentAssessment@ct.gov](mailto:CTStudentAssessment@ct.gov)

## Interim Assessment Updates

Use the quick links below to access articles and/or sections included in this newsletter.

Page 2

[LAS Results Available on EdSight](#)

[Centralized Reporting System](#)

[Sensible Assessment Practices and the Smarter Balanced Back to School Assessment Playbook](#)

Page 3

[2020-21 Assessment Calendar](#)

The Smarter Balanced Interim Assessments and Next Generation Science Standards (NGSS) Interim Assessments will be opening on September 1, 2020, for the 2020-21 school year. The interims are optional resources that local school districts may choose to use to assess their students' learning throughout the school year, during both remote or in-person learning. In support of the [Sensible Assessment Practices](#) guidance distributed to districts in July 2020, the interim assessments may be particularly helpful with re-opening plans this school year. Please note some of the important new aspects of the system this year.

- Much like with the remote administration this past spring, the 2020-21 interim assessments will not require a secure browser, whether administered in school or in students' residences. The state summative assessments will still require a secure browser that is downloaded to the local device. The updated browsers required for the summative assessments will be released on August 15, 2020.
- In the past, students were assigned their grade based on their grade status in the Test Information Distribution Engine (TIDE) and the grade could be manually adjusted for the use of off-grade interim assessments if necessary. However, this year Test Administrators will be able to select any grade-level interim assessment to deliver to a student without any manual changes in TIDE. For example, if a Grade 6 student in TIDE would like to take a Grade 4 test, then once a Test Administrator assigns the test, the student will be able to log in. The state summative assessments will still be assigned based on the grade in PSIS.

To support the administration, Cambium Assessment Inc. and the Connecticut State Department of Education (CSDE) are updating the Interim Assessment Users Guide which will be available at the end of August.

## Testing of Students on the Connecticut Physical Fitness Assessment in 2020-21

The CSDE Performance Office has received some inquiries about the *Connecticut Physical Fitness Assessment* (CPFA) for 2020-21. As it stands, the CSDE expects that this assessment will be administered in 2020-21. Please remember that districts have the whole school year to administer the CPFA, so testing can be delayed until later in the year if necessary. When administering the assessment, please ensure that all COVID-19 safety protocols are thoroughly followed. The CSDE will be closely monitoring the situation and will provide additional guidance in the coming months.



Connecticut Alternate Assessment



Connecticut  
Alternate  
Science  
Assessment



Connecticut SAT School Day



## Student Assessment News: July 29, 2020

### LAS Results Available on EdSight

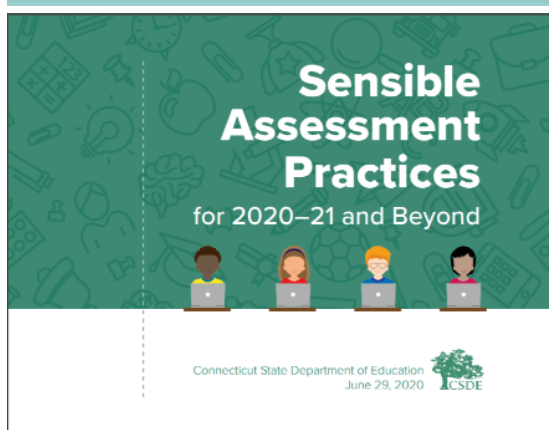
Results from the 2019-20 English Language Proficiency Assessment (LAS Links) are posted on [EdSight Public](#). Authorized users can also access the student-level results through EdSight Secure. While results are publicly reported, there are no formal accountability implications given the federal waiver of 2019-20 accountability requirements due to the COVID-19 pandemic.

There are three reports available: [achievement](#), [mastery](#), and [growth](#). The achievement report describes how English learners performed on the LAS Links in a given year on all domains (the listening, speaking, reading and writing subtests and the composites of oral, literacy, comprehension, productive and overall). The mastery report shows the number and percentage of students who met the CSDE's English mastery standard. The growth report shows the number/percentage of students of matched students achieving academic growth from one grade to the next based on the [LAS Links growth model](#). For questions regarding the reports, please email [EDSight.SDE@ct.gov](mailto:EDSight.SDE@ct.gov).

### Centralized Reporting System

Beginning September 8, 2020, Smarter Balanced and NGSS interim and summative assessment data, as well as Alternate Assessment System data (CTAA and CTAS) will be accessible in a single system called the Centralized Reporting System (CRS) from Cambium Assessment, Inc. Centralized Reporting System (CRS) was formerly known as the AIRWays Reporting system and will now be the single reporting system used to support both the summative and interim assessments results. Smarter Balanced, NGSS, CTAA, and CTAS summative data from 2014-15, 2015-16, 2016-17, 2017-18, and 2018-19 will be migrated to CRS on September 8, 2020. As a reminder, interim data continues to be available in CRS. The Smarter Balanced and NGSS interims will open on September 1, 2020. The CRS will be down for maintenance from July 25-August 2, 2020.

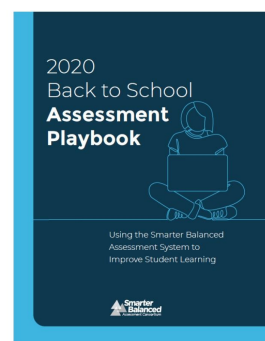
### Sensible Assessment Practices and the Smarter Balanced Back to School Assessment Playbook



The CSDE released its guidance on [Sensible Assessment Practices for 2020-21 and beyond](#), along with its school reopening guidance at the end of June. It calls for prioritizing small-scale, fine-grain assessments over large-scale, survey assessments to help teachers support students move to grade-level content as quickly as possible and support the district's approach to curriculum and instruction. CSDE's guidance makes heavy reference to the use of the Smarter Balanced Interim Assessment Blocks as a tool for such targeted assessment that informs instruction.

Smarter Balanced has now released its own [Back to School Assessment Playbook](#), which offers educators guidance and recommendations regarding

how they can use the new [Tools for Teachers](#) website, as well as nearly [150 interim assessment blocks](#), to accelerate learning this coming school year. The Playbook, developed in collaboration with Smarter Balanced member states, includes guidance on choosing and using the right instructional resources and strategies and recommendations on teaching and assessing the highest priority content in each subject.



## Student Assessment News: July 29, 2020

### Summative Assessment Calendar for 2020-21

Assessment	Dates
The AIR secure browsers for the 2020-21 school year must be downloaded for all 2020-21 online tests	Available on August 15, 2020
LAS Links	January 4, 2021–March 5, 2021
Connecticut Alternate Assessment Eligibility Form Deadline	January 15, 2021—students in Grade 11 and Dually Identified students in Grades 3-8 and 11; and February 15, 2021—students in Grades 3-8 and newly identified Grade 11 students
NGSS Assessment	February 1–June 4, 2021 (Grade 11) March 29–June 4, 2021 (Grades 5 and 8)
Connecticut Alternate Assessment - CTAA	March 29–June 4, 2021
Connecticut Alternate Science Assessment - CTAS	(Upload Window for Submission through the DEI) March 29–June 4, 2021 (Grades 5, 8, and 11)
Connecticut Smarter Balanced	March 29–June 4, 2021
Connecticut SAT School Day	Primary Test Dates: March 24, 2021, <b>OR</b> April 13, 2021 (Based on school selection)  Makeup Dates: April 27 and/or 28, 2021

Register for email updates

To automatically receive the *Student Assessment News* and/or other announcements, [register for e-mail updates](#) on the Comprehensive Assessment Program Portal.



Connecticut Alternate Assessment



Connecticut  
Alternate  
Science  
Assessment

