



Student Assessment News

Connecticut State Department of Education • Performance Office

September 3, 2020

[Archived Student Assessment News](#)
CTStudentAssessment@ct.gov

Sensible Assessment Practices and Webinar Series

Use the quick links below to access articles and/or sections included in this newsletter.

Page 2
[Fall 2020 SAT Updates](#)

[Special Population Updates](#)

Page 5
[High School English Learners Paper](#)

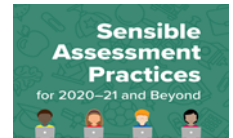
[NGSS Practice Test](#)

[Quick Guide for Setting Up Technology](#)

[Interim Assessment Update](#)

Page 6
[2020-21 Assessment Calendar](#)

The [Sensible Assessment Practices for 2020-21 and Beyond](#) document was created to support the return to school this fall, for both in-person and remote instruction. It offers guidance to educators, including general and special education teachers, interventionists, instructional specialists, and related service providers on how they can “assess” their incoming students without necessarily having to “test” them using formal assessments.



To conceptualize what this would look like in the classroom, the CSDE developed the [Sensible Assessment Practices webinar series](#), which are short, focused webinars that provide examples, considerations, and resources specific to each phase of the school year referenced in the document. Topics designed for teachers include **Start of the School Year**, **Building Community**, and **Beginning with a Unit Designed for Success**. Additional webinars are coming soon and focus on using EdSight Secure Longitudinal Data, the Instruction and Assessment Cycle, and Focusing on Sensible Assessment Practices Year Round.

Connecticut Assessment Systems Password Reset for 2020-21

All TIDE users should have received a system generated password reset email on August 27, 2020. This password reset is necessary in order to access TIDE for the 2020-21 school year. If you are a TIDE user and did not receive this email, please contact the Connecticut Comprehensive Assessment Program Help Desk at (844) 202-7583 or cthelpdesk@cambiumassessment.com with any questions.

Smarter Balanced Remote Teaching and Learning Web Site

Smarter Balanced assessment resources are designed to support teaching and learning in flexible ways. Teachers are encouraged to use the interim assessments and formative resources as tools to plan their instruction and determine how to help their students learn more. Teachers now need access to high-quality, accessible, and flexible resources to support their students while teaching remotely and while their students are learning outside of the traditional classroom. The [Smarter Balanced Remote Teaching and Learning](#) site provides suggestions regarding how teachers may use Smarter Balanced resources during this unprecedented time.



Connecticut Alternate Assessment



Connecticut
Alternate
Science
Assessment



Student Assessment News: September 3, 2020

Fall 2020 SAT Updates

The Connecticut State Department of Education (CSDE) has made arrangements with the College Board so Grade 12 students can take the SAT in fall 2020, either during a weekend or a school day administration at no cost to the student. The fall 2020 SAT weekend or school day would be an *optional* test for students. There are no state requirements for having students take this test and this is not a rescheduling of the Connecticut SAT School Day.

On July 30, 2020, the College Board sent an email with updates regarding to fall 2020 testing. Please review the following document: <https://collegereadiness.collegeboard.org/pdf/fall-2020-flexible-testing-options-guide-sat-suite.pdf>.

Test Coordinators for Connecticut schools that plan to use the SAT Weekend testing option should contact [Michelle Rosado](#) for student codes. Please provide the number of codes you require for your students. Students should not register for the SAT until they receive the code from their school. If they register for the SAT before receiving a code, they will be asked for payment information.

Schools that want to participate in the SAT School Day fall administration must order materials through the College Board's Test Ordering System (TOS). The CSDE is not ordering materials for schools. The CSDE will be directly billed for the cost of these tests. More information can be found on the College Board's web site: <https://professionals.collegeboard.org/test-ordering-services>.

Special Population Updates

In an effort to get a head start on providing all students with the most appropriate tools and supports when participating on the optional Smarter Balanced Interim Assessments and spring summative assessments, refer to the updated [2020-21 Accessibility Chart](#) and [Test Supports/Accommodations Form](#) available on the Connecticut Comprehensive Assessment Program Portal. The Performance Office encourages teachers and test coordinators to plan early when determining the types of supports and accommodations their students may need. Refer to recent 504 Plans and Page 8 of the Individualized Education Program (IEP) to ensure that appropriate supports and accommodations are identified and submitted through the Test Information Distribution Engine (TIDE) system this November. For students who need additional accessibility to assessments such as the use of a Read Aloud of the Smarter Balanced English language arts (ELA) Reading Passages or use of a Scribe, please contact the Performance Office as early as possible to apply for Special Documented Accommodations. More information on this process will be provided in the months ahead.

Universal Tools	Designated Supports	Accommodations	Available to students with an IEP or 504 Plan
Large Print	Read Aloud	Extended Time	Yes
Text-to-Speech	Speech-to-Text	Calculator	Yes
Screen Magnification	Calculator	Calculator	Yes
Braille	Calculator	Calculator	Yes
Large Print	Read Aloud	Extended Time	Yes
Text-to-Speech	Speech-to-Text	Calculator	Yes
Screen Magnification	Calculator	Calculator	Yes
Braille	Calculator	Calculator	Yes

[Accessibility Chart](#): The Accessibility Chart identifies the universal tools, designated supports, and accommodations available to students when accessing the Smarter Balanced and Next Generation Science Standards (NGSS) interim and summative assessments. New this year- the embedded **Speech-to-Text** accommodation and combined language options for the math **Translation Glossary** designated support! Also note that the [100s Number Table](#) and [Multiplication Table](#) (both non-embedded accommodations) can now be provided to students in Grade 3.

Special Populations Updates

[Test Supports/Accommodation Form](#): This optional form can be used to record designated supports/accommodations needed for students with an IEP, Section 504 Plan, or English learners. Information from this form must be submitted/ uploaded to the TIDE Test Settings prior to testing.

Language	Language	Language
Arabic	Chinese	English
Burmese	French	Spanish
English	German	Tamil
French	Haitian Creole	Vietnamese
German	Hebrew	Yiddish
Haitian Creole	Hindi	Yoruba
Hebrew	Indonesian	
Hindi	Italian	
Indonesian	Japanese	
Italian	Korean	
Japanese	Portuguese	
Korean	Russian	
Portuguese	Slovak	
Russian	Spanish	
Slovak	Tamil	
Spanish	Tamil	
Tamil	Urdu	
Urdu	Vietnamese	
Vietnamese	Yiddish	
Yiddish	Yoruba	

[Translation Glossary](#) (Embedded Designated Support): Students who are English Language Learners may benefit from using a Translation Glossary for the Smarter Balanced mathematics interim or summative assessments. New this year, students can use a **combination of language supports** depending on their specific language needs and how those needs are supported in the classroom. On the Smarter Balanced math assessments, a student can use a **single** language support (e.g. Burmese), **dual** (e.g. Burmese and English), which allows for use of English combined with the student’s native language, or **dual combined with Illustration Glossary** (e.g. Burmese, English, and Illustration Glossary).

Other updated resources include:

- [Process for Requesting Special Documented Accommodations](#)
- [Embedded and Non-Embedded Designated Supports for English Learners](#)
 - [Smarter Balanced Braille Options](#)
 - [Smarter Balanced Braille Adaptive Test](#) (HAT)
 - [Connecticut Assistive Technology Manual](#)
- [Testing Students in PSIS Who Attend Out-of-State Facilities or In-State Non-Approved Facilities](#)

The [2020-21 Connecticut Alternate Assessment Eligibility Form](#) is available on the Connecticut Comprehensive Assessment Program Portal and can be downloaded and completed at upcoming Planning and Placement Team (PPT) meetings for the 2020-21 school year to determine eligibility for Connecticut Alternate Assessments in math, English language arts, and Science. The Data Entry Interface (DEI) will open on November 12, to allow trained Teachers Administering the Alternate Assessments (TEAs) to submit eligibility forms for test registration. The [Connecticut Alternate Assessment System Participation Guidance for Planning and Placement Teams](#) flowchart and [Frequently Asked Questions and Answers about the Connecticut Alternate Assessment System](#) is also available on the portal.

Student Assessment News: September 3, 2020

Special Populations Updates

Required training for TEAs opens on September 24, 2020, and will remain open for completion through the spring testing window. While TEAs are encouraged to complete this training early in the year, it must be completed prior to the test administration along with a score of 80% or better on the corresponding quiz. Only TEAs with a trained TEA status in TIDE will have access to the secure alternate assessment systems and required materials necessary for test administration. The following brochures are updated and available on the portal: [Connecticut Alternate Assessment Training Required for Teachers Administering the Alternate: Overview for Teachers Administering the Alternate](#) and the [Connecticut Alternate Assessment System Training Required for Teachers Administering the Alternate: Overview for District Administrators](#).

The CSDE is currently seeking educators to serve as panelists to review **LAS Links Form F items**. The LAS Links Assessment is used in Connecticut as the federally required English Language Proficiency Assessment. Newly aligned forms are developed periodically to ensure appropriate content, validity, and sensitivity of items. This assessment is administered to all students identified as English learners in Grades K-12. Additional information is available in this [memo](#). Please circulate this invite with staff that maybe interested in participating. **The deadline to apply is September 8, 2020.**

Connecticut Alternate Assessment Eligibility Form Deadlines

Connecticut Alternate Assessment Eligibility Form Submission Deadlines through the Data Entry Interface (DEI)	Connecticut Alternate Assessment Eligibility Form Student Subgroup
November 12- January 15, 2021	Eligible students in Grade 11; and Dually identified (English learner and Special Education) students Grades 3-8 and 11
November 12-February 15, 2021	Eligible students in Grades 3-8; and Extended deadline for newly eligible Grade 11 students

A [Photo Directory of the Performance Office](#) is available.

The directory is organized by unit. Feel free to reach out to staff members directly by email for any technical assistance.

High School English Learners Paper

English learners (ELs) are a subgroup of Connecticut's high school students unique from their non-EL peers in the challenge they face to access and master secondary-level academic content while concurrently trying to develop English language proficiency. [A Closer Look at Connecticut's High School English Learners \(SY 2018-19\)](#) presents a statewide picture of high school ELs in SY 2018-19, including their demographics, assessment results, and trends in these areas.

NGSS Practice Tests

The 2020-21 NGSS Practice Tests will be available starting on September 14, 2020. These practice tests are available at Grades 5, 8 and 11, and include a mix of stand-alone and item clusters from Life, Physical and Earth/Space Sciences. Some new items will be included for each grade. Text-to-speech and Spanish translation will be available. Please contact Jeff Greig at jeff.greig@ct.gov if you have any questions about the NGSS Assessments.

Quick Guide for Setting Up Technology

The [Quick Guide for Setting Up Technology manual](#) is available and contains technology requirements and instructions that will assist technology coordinators in preparing computers and devices for online testing. It is organized by operating system (Windows, Mac, iPad, Linux, ChromeOS).

Interim Assessment Update

As a reminder, the Smarter Balanced Interim Assessments and NGSS Interim Assessments will be opening on September 1, 2020, for the 2020-21 school year. The interims are optional resources that local school districts may choose to use to assess their students' learning throughout the school year, during both remote and in-person learning. In support of the Sensible Assessment Practices guidance distributed to districts in July 2020, the interim assessments may be particularly helpful with reopening plans this school year. Please note some of the important new aspects of the system this year.

Below is a list of resources to support your use of the interims and formative assessment processes this fall. Please contact [Cristi Alberino](#) if you have any questions.

- [How to Activate a Test Session: Smarter Balanced Interim Assessments](#)
- [Manually Entering Designated Supports and Accommodations](#)
- [Quick Guide to Administering Smarter Balanced and NGSS Interim Assessments Remotely](#)
- [Using Smarter Balanced and Next Generation Science Standards \(NGSS\) Interim Assessments Remotely Considerations for Non-Embedded Universal Tools, Designated Supports, and Accommodations](#)
- [Tools for Teachers](#): Educator-created lessons, activities, strategies, and professional development to help tailor instruction and boost learning.

Student Assessment News: September 3, 2020

Summative Assessment Calendar for 2020-21

Assessment	Dates
The AIR secure browsers for the 2020-21 school year must be downloaded for all 2020-21 online tests.	Available for download https://ct.portal.cambiumast.com/secure-browsers.stml
LAS Links	January 4, 2021–March 5, 2021
Connecticut Alternate Assessment Eligibility Form Deadlines	January 15, 2021—students in Grade 11 and dually identified students in Grades 3-8 and 11; and February 15, 2021—students in Grades 3-8 and newly identified Grade 11 students
NGSS Assessment	February 1–June 4, 2021 (Grade 11) March 29–June 4, 2021 (Grades 5 and 8)
Connecticut Alternate Assessment - CTAA	March 29–June 4, 2021
Connecticut Alternate Science Assessment - CTAS (Administered throughout the year)	(Upload Window for Submission through the DEI) March 29–June 4, 2021 (Grades 5, 8, and 11)
Connecticut Smarter Balanced	March 29–June 4, 2021
Connecticut SAT School Day	Primary Test Dates: March 24, 2021, OR April 13, 2021 (Based on school selection) Makeup Dates: April 27 and/or 28, 2021

Register for email updates

To automatically receive the *Student Assessment News* and/or other announcements, [register for e-mail updates](#) on the Comprehensive Assessment Program Portal.

