

# Connecticut Statewide Assessment Participation Guidance for Planning and Placement Teams

This resource should be used prior to the Planning and Placement Team (PPT)/Section 504 Meeting to prepare for statewide assessment participation discussions and for the selection of accommodations applicable for each assessment system.

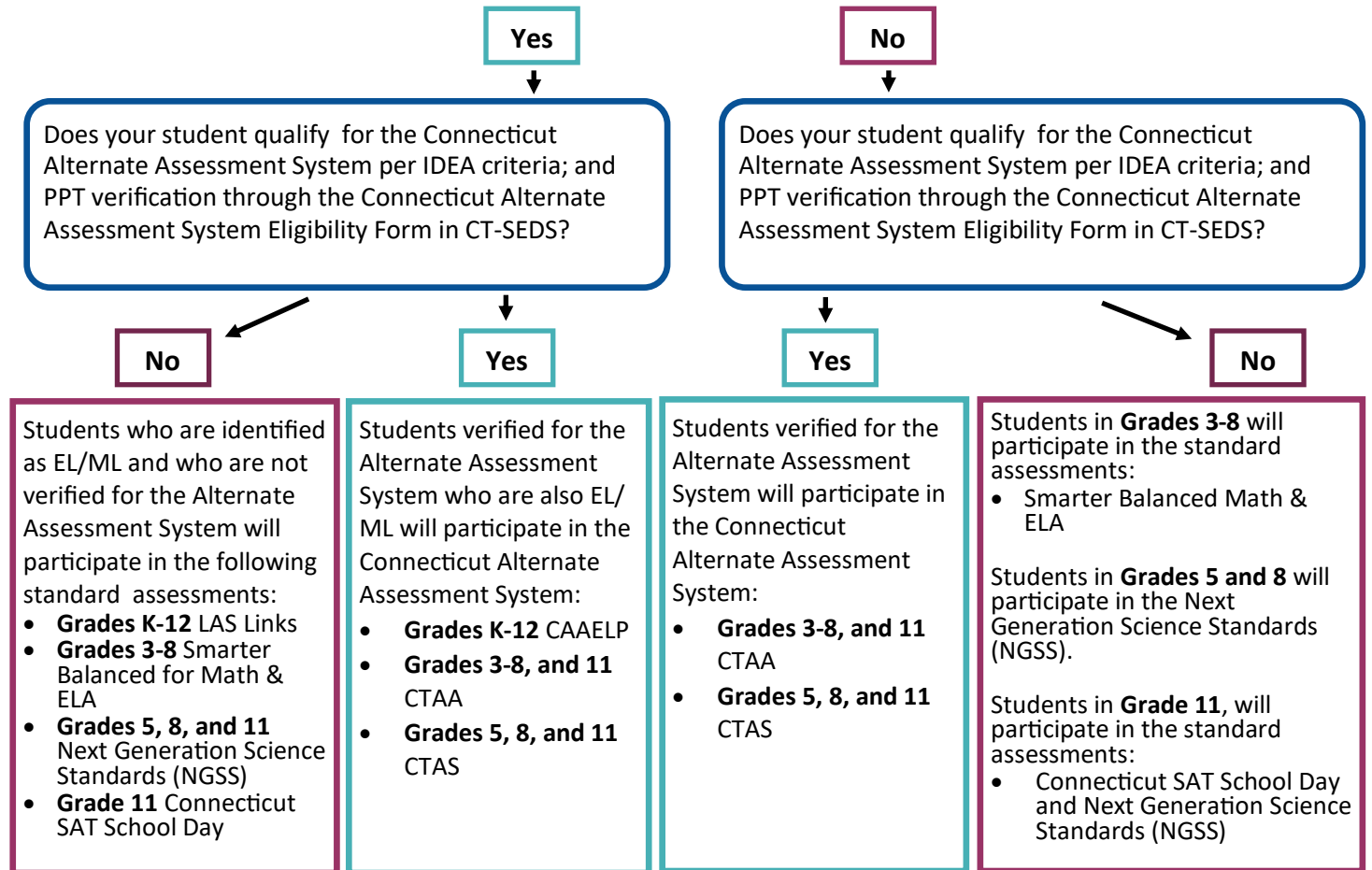
## Considerations

District Administrators/Special Education Administrators should coordinate with their district PSIS Coordinator to generate a report of students by grade (K-12) to confirm the following student groups:

Student Groups:	Yes	No
EL/ML	<input type="checkbox"/>	<input type="checkbox"/>
IDEA	<input type="checkbox"/>	<input type="checkbox"/>
Section 504	<input type="checkbox"/>	<input type="checkbox"/>
EL/ML and IDEA	<input type="checkbox"/>	<input type="checkbox"/>
EL/ML and Section 504	<input type="checkbox"/>	<input type="checkbox"/>

The information on these reports should be disseminated to PPT/Section 504 Case Managers.

## Is Your Student Identified in PSIS as EL/ML?



## Resources

Standard Statewide Assessments: [CSDE LAS LINKS](#) [Smarter Balanced](#) [NGSS](#)

Statewide Alternate Assessments: [Connecticut Alternate Assessment System Eligibility Form](#) [CTAS](#) [CAAELP Resources](#)

Resources for PPT/Section 504 Teams: [Assessment Resources for Planning and Placement and Section 504 Teams Quick Guide](#)