




Collaborative for the Alternate Assessment of English Language Proficiency (CAAELP)

December 2022

Overview

This PowerPoint provides current Connecticut specific information available to help facilitate preparation for the Collaborative for the Alternate Assessment of English Language Proficiency (CAAELP) also referred to as Alt ELPA.

More information will be shared as it becomes available. Consider registering for the [Student Assessment Newsletter](#).

Within this presentation you will see this symbol  indicating the information outlined in blue has been hyperlinked.

English Language Proficiency (ELP) Assessment Dates

LAS Links

- January 3 – March 3, 2023

Collaborative for the
Alternate Assessment of
English Language
Proficiency (CAAELP)

- February 1–March 31, 2023

Resources

- Also referred to as the Alt ELPA
- Incorporated into Connecticut's Alternate Assessment System
- Information is located on the CSDE Student Assessment main webpage/[CAAELP Resources](#), or on the Alternate Assessment page of the Connecticut Comprehensive Assessment Program Portal ([CT Portal](#)).
- Additional information on the Collaborative can be viewed at [altelpa.org](#).

Student Eligibility

Students must:

- Be identified as EL/ML in Grades K-12 in PSIS
- Have an active IEP reflecting significant cognitive disabilities
- Have the PPT confirm eligibility for the Alternate Assessment System using the [Alternate Assessment System Eligibility Form](#)

Refer to the [Collaborative for the Alternate Assessment for English Language Proficiency \(CAAELP\) Participation Guidelines](#) for more details.

Registering Students for the CAAELP

- A Trained Teacher (TEA) should submit a Connecticut Alternate Assessment System Eligibility Form for EL/ML students with significant cognitive disabilities in Grades K-12 through the Data Entry Interface (DEI) between November 14, 2022 – December 23, 2022.
- The ELAC should add information for students from Grades K, 1, 2, 9, 10, and 12 to the [DRC Google Sheet](#) who are eligible for the CAAELP.
- If the December 23, 2022, deadline is not met submit the Alternate Assessment System Eligibility Form as soon as possible prior to testing the student and ensure all test proctors understand the student will not participate in any standard assessments (Smarter Balanced, NGSS, CT SAT School Day or LAS Links).

CAAELP Training

The [CAAELP Module Alt ELPA Test Administrator Training \(2022-2023\)](#) is available for educators responsible for administering the CAAELP.

CAAELP MODULE: ALT ELPA TEST ADMINISTRATOR TRAINING (2022-2023)

toc next page

Section 1: Welcome PAGE 1

Welcome to the module, *Test Administrator Training*. This module was developed for those educators assigned to administer the Alt ELPA Operational Field Test. The district and building Test Coordinators would also be expected to complete this module. If there is any likelihood they might need to administer the assessment. Once Test Administrators have completed this comprehensive training module, they will only need to complete a short refresher module each year they administer the Alt ELPA.

This module may take approximately 1.5 hours, but may be started and stopped. Use the table of contents to begin again where you left off.

View the following video, *How to Administer an Alt ELPA Item* (14:09) which provides a general overview of Alt ELPA test administration. The module will provide more detailed information.

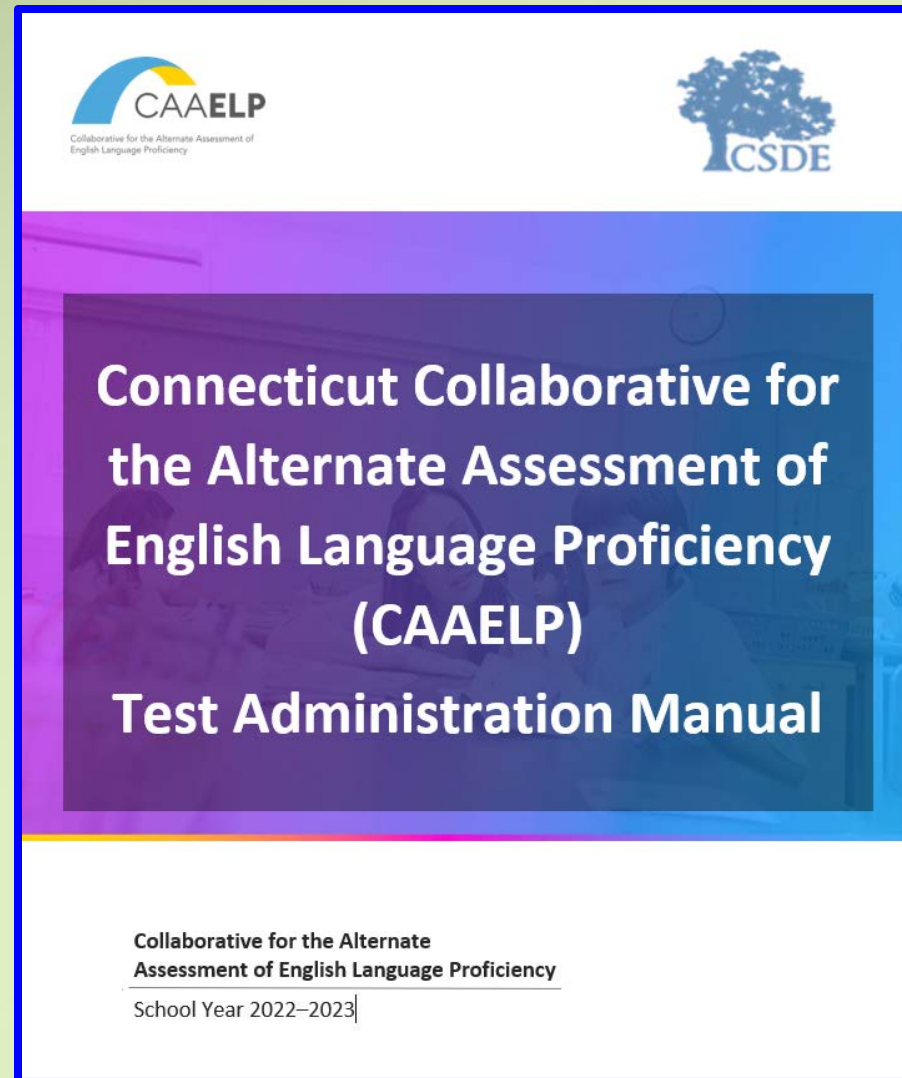
How to Administer an Alt ELPA Item
ELPA21

CAAELP

14:12 vimeo

Refer to the [CAAELP memo](#) sent on November 21, 2022, for details about creating an account to access training.

Connecticut CAAELP Test Administration Manual (TAM)



Connecticut CAAELP Test Delivery System (TDS)

- District administrators for Testing (DA) must create a user role in TIDE for each educator administering the CAAELP (and/or the CTAA and CTAS)
- Trained teachers administer the CAAELP in a one-to-one test setting using the Cambium test platform (the same test system used for CTAA, Smarter Balanced, and NGSS)
- Testing requires two separate devices:
 - The Student Interface via the Secure Browser;
 - The Test Administration Interface
- All passages, items, and response options are designed to be read to the student by the TEA. The teacher will provide accommodations based on those documented in the student's IEP.

Connecticut CAAELP Directions for Administration

Refer to the [Test Administrator User Guide: The CT Test Delivery System](#)

Directions for Administration (DFA) Secure

All CAAELP items have grade band, item and test form specific Test Administrator Directions that must be securely downloaded from the Test Information Distribution Engine (TIDE) system Secure Testing Materials at the start of **each** live test session. These directions must match the test form provided to the student. The test administrator must display them on an electronic (secure) device (e.g., iPad or tablet) and follow along with the student's assessment. These booklets accompany each item and instructions are in parentheses and italicized. These booklets also contain the required scoring rubrics for the constructed response items.

Connecticut CAAELP Accessibility and Accommodations Manual



Important! The Trained Test Administrator reads all items, passages and response options to each individual student in all domains.

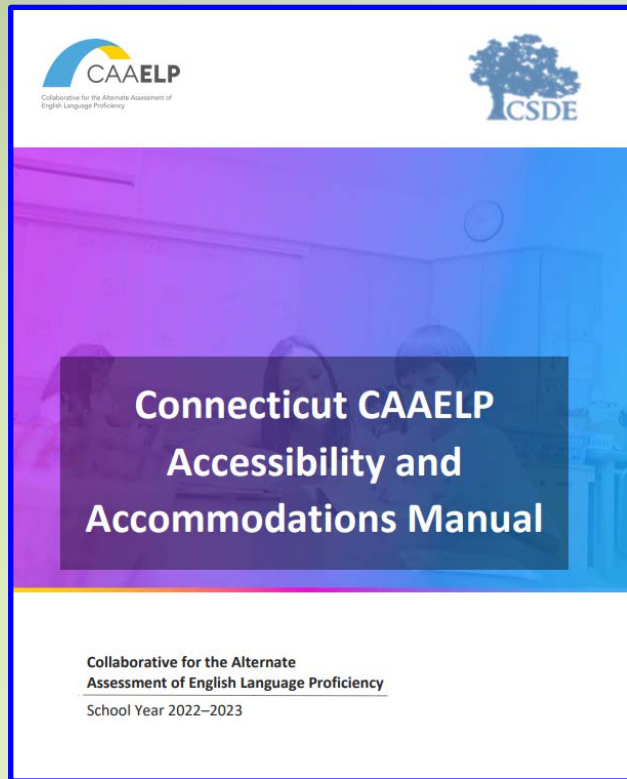


Table of Contents	
Table of Contents.....	4
Structure of this Document.....	5
Section 1: Introduction.....	6
Intended Audience.....	7
Recommended Use.....	7
Purposes of the CAAELP.....	7
Section 2: Connecticut CAAELP Participation Guidelines.....	8
Factors that Should NOT Determine Participation in CAAELP.....	8
Potential Unintended Consequences of CAAELP Participation.....	9
Section 3: Applying the Accessibility Model.....	10
Instructional and Assessment Accessibility Decisions.....	10
CAAELP Accessibility Model.....	12
Section 4: CAAELP Embedded Accessibility Features.....	16
Universal Features (Embedded).....	16
Designated Supports (Embedded).....	18
Accommodations (Embedded).....	19
Section 5: CAAELP Non-Embedded Accessibility Features.....	22
Optimal Testing Conditions.....	22
Designated Supports (Non-Embedded).....	23
Accommodations (Non-Embedded).....	25
Resources.....	27
Appendix A Application of the Accessibility Model, Student Samples.....	29
Appendix B CAAELP Tool 1: Template for Applying Accessibility Considerations.....	37

CAAELP Guidance Regarding Documentation in CT-SEDS

In CT-SEDS, CAAELP is documented in the *Special Considerations* section and *the District and State Testing* section. Please note the following:

- Annual reviews, re-evaluations, and initial referrals are now processed in CT-SEDS;
- Students with a Section 504 Plan rather than an IEP are **not** eligible for the Alternate Assessment System (CTAA, CTAS, and CAAELP);
- If making a new recommendation for a student, an amendment or new PPT should be conducted;
- Students in Grades K-12 are included in the IEP process;
- Supporting materials are in [CAAELP Resources](#).

Alternate Assessment System Early Stopping Rule



2022-23 Connecticut Alternate Assessment System Early Stopping Rule

[Updated December 2022 to include CAAELP]

Connecticut Alternate Assessments measure the knowledge and skills of students with significant cognitive disabilities as required by the Individuals with Disabilities Education Act (IDEA) and Every Student Succeeds Act (ESSA). They are designed to support student independence to the greatest extent possible by making academic and language content accessible and the expected achievement levels appropriate. The Connecticut Alternate Assessment System is comprised of the following assessments:

- The Connecticut Alternate Assessment (CTAA)—aligned to the same Connecticut Core Standards (CCS) used to instruct and assess all of Connecticut’s public-school students in Grades 3-8 and 11 in the subject areas of mathematics and English language arts.
- The Connecticut Alternate Science (CTAS) Assessment—aligned to the Next Generation Science Standards (NGSS) and administered to students in Grades 5, 8, and 11.
- The Collaborative for the Alternate Assessment of English Language Proficiency (CAAELP)—designed for students with significant cognitive disabilities in Grades K-12 who are dually identified as English learners/multilingual learners (ELs/MLs) receiving services under IDEA. Content aligned to and derived from the Connecticut English Language Proficiency (CELP) standards define the tested domains of listening, speaking, reading, and writing.

CAAELP Domain Exemption

Domain Exemptions are available on the Listening and/or Speaking subtests for the following students:

- If a student is identified as D(d)eaf or hard of hearing, they may not be able to participate in the Listening subtest due to this disability.
- ELs/MLs with an IEP may be non-verbal and, even when provided assistive technology or augmentative and alternate communication supports, may not be able to participate in the Speaking subtest.

The following user roles in TIDE will be able to submit this CAAELP Domain Exemption Form: DA, DC and SC.

The Form is located under Preparing for Testing in TIDE. Please ensure this form is submitted prior to testing the student and communicate this information and expectations clearly to all test administrators.

Critical Task Dates

[Alternate Assessment System Eligibility Form](#) submitted by Trained TEA

- November 14, 2022- December 23, 2022

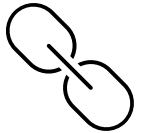
[ESR Student Response Check](#) conducted by Trained TEA (complete SRC and submit attestation form to DA)

- February 1, 2023

[Early Stopping Rule Request and Attestation Form](#) submitted by DA in TIDE

- March 1, 2023

CAAELP Resources on the CT Portal



Connecticut Collaborative for the Alternate Assessment of English Language Proficiency (CAAELP)

Use this page to access resources related to the CAAELP Practice and Operational Tests (also referred to as Alt ELPA). Materials are grouped by test type and/or grade in the tables below. For additional information, please see the Connecticut Collaborative for the Alternate Assessment of English Language Proficiency (CAAELP): Test Administration Manual.

CAAELP Practice Tests	
Material Type	Material Description
Practice Test Administrator Directions and Scoring Rubrics Booklets: <ul style="list-style-type: none"> • Kindergarten • Grade 1 • Grades 2-3 • Grades 4-5 • Grades 6-8 • Grades 9-12 	Required for all CAAELP (Alt ELPA) Practice Test Administration
COMING SOON! CAAELP Practice Tests Training Module	COMING SOON! This optional training is recommended.
COMING SOON! Connecticut CAAELP Accessibility and Accommodations Manual	COMING SOON! This manual provides guidance on the provision of optimal testing conditions and the selection and administration of appropriate universal features, designated supports, and accommodations for eligible ELs/MLs with significant cognitive disabilities.
COMING SOON! Connecticut Collaborative for the Alternate Assessment of English Language Proficiency (CAAELP): Test Administration Manual	COMING SOON! This manual contains the directions to guide the test administrator in logging-in, administering the practice test, and general test administration activities.

CAAELP Operational Tests	
Material Type	Material Description
CAAELP Test Administration Training CAAELP Module Alt ELPA Test Administrator Training (2022-2023) CAAELP Training for the 2022-23 School Year memo.11/21/22	CAAELP Module Alt ELPA Test Administrator Training (2022-2023) is required for educators with responsibility for administering the CAAELP to eligible students in Grades K-12.
COMING SOON! Connecticut Collaborative for the Alternate Assessment of English Language Proficiency (CAAELP): Test Administration Manual	COMING SOON! This manual contains the directions to guide the test administrator in logging-in, administering the practice test, and general test administration activities.
COMING SOON! Connecticut CAAELP Accessibility and Accommodations Manual	COMING SOON! This manual provides guidance on the provision of optimal testing conditions and the selection and administration of appropriate universal features, designated supports, and accommodations for eligible ELs/MLs with significant cognitive disabilities.
2022-23 Connecticut CAAELP Participation Guidelines	These guidelines describe the purpose, participation criteria and procedures to determine and document eligibility for the CAAELP.

Resources



[CT.gov Home](#) / [Department of Education](#) / [K-12 Education](#) / [Accountability-Assessment-Data](#) / [Student Assessment](#) / [English Language Proficiency Assessment - LAS Links](#) / Documents/Forms

English Language Proficiency Assessment - LAS Links

[Overview](#)

[Documents/Forms](#)







[Contact](#)

Provided by:

Department of Education

Documents/Forms

English Learner Resources

- [CSDE English Learners Web Page](#)
- [Connecticut DRC LAS Links Website](#)
- [DRC Insight Portal](#) - This portal is available to individuals registered with a username and password. The English Learner Assessment Coordinator assigns permissions for various secure functions. The LAS Links Test Administration is one of the applications within this portal. Other applications in the INSIGHT Portal include, Test Management, Student Groups, Student Management, User Management, General Information, Interactive Reporting, On-Demand Reports, and Testing Status.
- English Learner Identification
 - [CSDE English Learner/Multilingual Learner Identification Process](#) 
 - [English Learner Identification Process Flowchart K-12](#) 
 - [Optional English Learner Identification Process Flowchart PK-4](#) 
 - [Home Language Survey](#) 
 - [Home Language Survey Guidance](#) 
 - [Exit Criteria](#) 

Resources



Connecticut DRC LAS Links Website

ANNOUNCEMENTS

The [Connecticut State Department of Education \(CSDE\)](#) will be using the LAS Links Assessment for the ELP Assessments for all students in Grades K-12 for the 2021, 2022 and 2023 test administration. The CSDE believes that high-quality, comprehensive and effective English as a Second Language (ESL) and bilingual education programs are essential to acquire English language proficiency and academic proficiency for students who are English Learners (ELs). The CSDE believes that research-based instructional practices that support ELs in general education classrooms are essential while they are acquiring English and well after they have exited the intensive programs.

2022-23 LAS Links Testing Window January 3, 2023- March 3, 2023

[LAS Links DRC INSIGHT Portal Access](#)

LAS Links Help Desk

866-282-2250 Option 2

LASLinksHelpDesk@DataRecognitionCorp.com

Communication Updates

EL-ML Identification Screening Materials for 2022-23 (9/01/22)

English Learner Identification Process (4/21/22)



Contacts

For questions about LAS Links, EL/ML Identification, EdSight:

- Michael Sabados Michael.Sabados@ct.gov
- Cristi Alberino Cristi.Alberino@ct.gov

For questions about the CAAELP:

- Janet Stuck Janet.Stuck@ct.gov
- Deirdre Ducharme Deirdre.Ducharme@ct.gov
- Ada Kovaci-Kume Ada.Kovaci-Kume@ct.gov