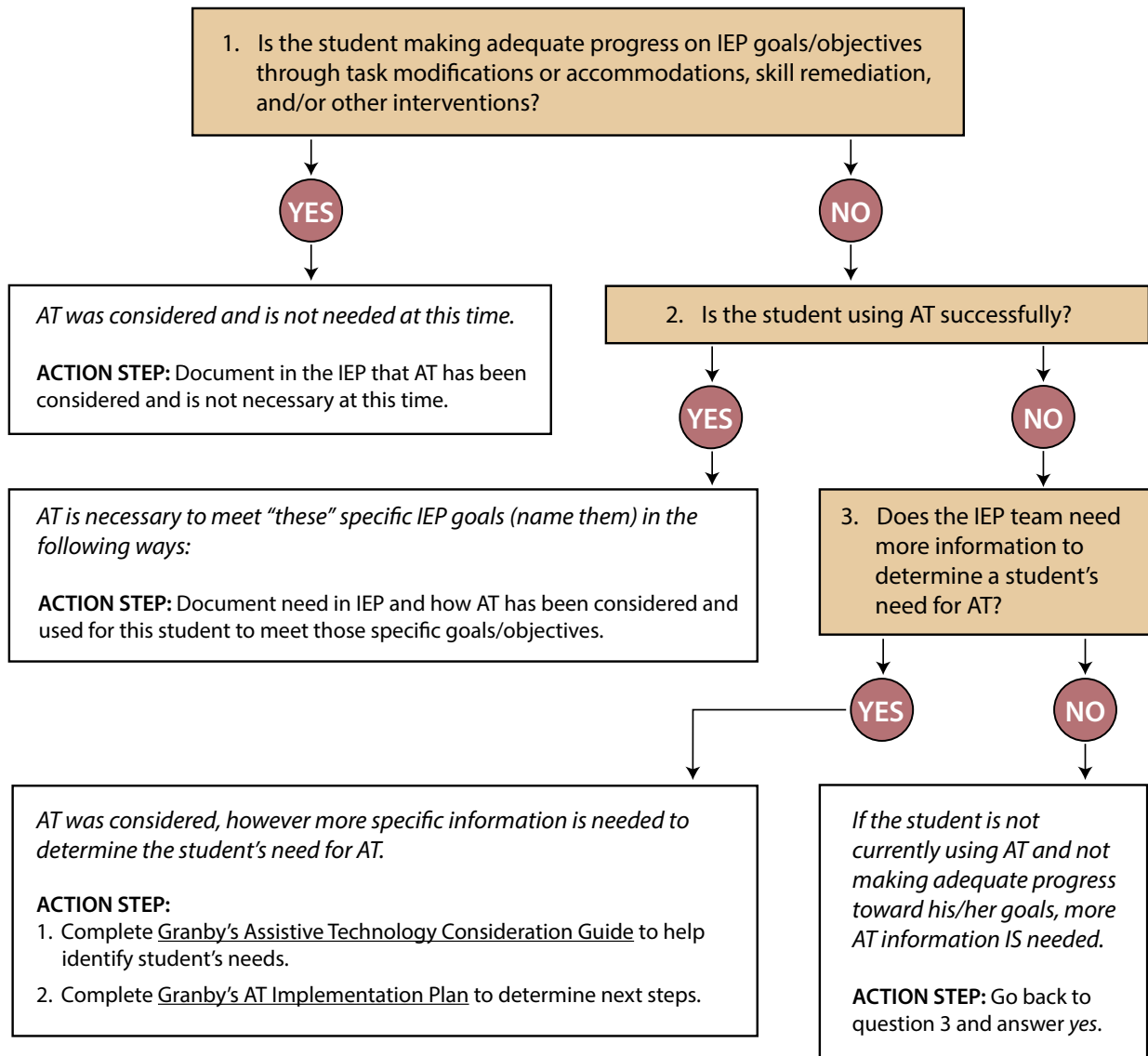


Figure 1. Consideration of AT within the IEP Process Flow Chart

## Considerations of Assistive Technology (AT) within the IEP Process



Adapted from:

Zabala, J.S. (1994). The SETT framework: Critical questions to ask when making informed decisions about AT (online). Available at <http://www.joyzabala.com/Documents.html>.

Bowser, G. & Reed, P. (1988) Education tech points: A framework for AT planning: Roseburg, OR: Oregon Assistive Technology project.