

CPFA Lessons Learned

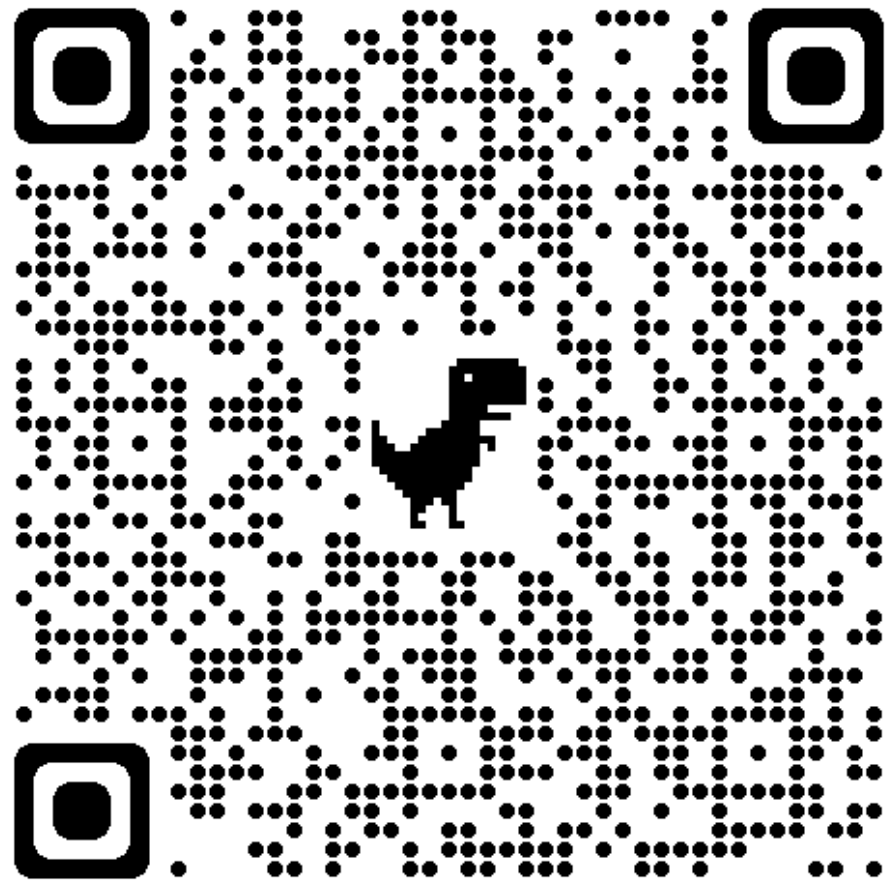


Performance Matters Forum – October 12, 2023

Connecticut State Department of Education

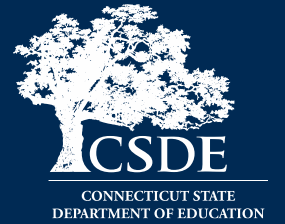


QR Code For Presentation





Purpose



Last winter, the CSDE launched the Connecticut Physical Fitness Assessment Individual Student Collection. In this session, Performance Office team members will review data from the 2022-23 administration of the Connecticut Physical Fitness Assessment and share some thoughts and lessons learned from this first year of collecting individual student data for this assessment. To provide additional context and insight, several districts will share their lessons learned as well as experiences from this new effort.



Presenters



- **Karen Veilleux**, Wallingford
- **Christine Wanner**, Westport
- **Lisa Daly**, West Hartford
- **Chris Innaco**, Westport
- **Ray Martin**, CSDE
- **Abe Krisst**, CSDE



Agenda



- CSDE Team
 - Overview of new EdSight Reports
 - Lessons Learned
- District Panel Discussion
 - Lessons Learned
 - Session Discussion
- Adjourn



CPFA EdSight Reports



- Can be found here:
<https://public-edsight.ct.gov/>
- New '23 reports were released in late August.
- There is no data yet on EdSight Secure.

The screenshot shows the EdSight Physical Fitness Assessment report dashboard. At the top, there is a navigation bar with 'Ct.gov | EDSIGHT' and a 'Language' dropdown. Below the navigation bar, the title 'Physical Fitness Assessment' is displayed, followed by links for 'Additional Reports: CPFA Data Prior to 2022-23 | Next Generation Accountability Dashboard' and 'See related links.' A paragraph of text explains that the report presents student performance on the Connecticut Physical Fitness Assessment (CPFA) and lists the four components: aerobic endurance, flexibility, upper body strength and endurance, and abdominal muscle strength and endurance. Below the text, there are three tabs: 'State Dashboard', 'District/School Dashboard', and 'Data Tables'. The 'State Dashboard' is selected and displays several key metrics and charts. The 'Percent of All Students Participating¹ in All Four Assessments' is 93%. The 'Percent of All Students Reaching Fitness Zone Standard²' is 45%. A bar chart shows the 'Percent of All Students Reaching Fitness Zone Standard by Assessment' for All Four Assessments (45.5%), Aerobic (63.2%), Curl Ups (83.9%), Push Ups (70.6%), and Sit and Reach (81.0%). Another bar chart shows the 'Percent Reaching Fitness Zone Standard by Student Group and Assessment' for All Four Assessments by Grade: Grade 4 (51.5%), Grade 6 (46.0%), Grade 8 (44.1%), and High School (41.1%). A dropdown menu for 'Select Student Group' is set to 'Grade' and 'Select Assessment' is set to 'All Four Assessments (AE, C...'. At the bottom, a footnote explains that the participation rate is calculated based on June Grade 4, 6, 8, and 10 enrollment, and that high schools have the flexibility to administer the CPFA at any point in a student's high school career.

¹ Participation rate is the number of students taking all four assessments divided by the June Grade 4, 6, 8, and 10 enrollment. The CSDE provides high schools the flexibility to administer the CPFA at any point in a student's high school career; however, June Grade 10 enrollment is used as the denominator when calculating participation rate. This can result in schools/districts with participation rates over 100% (i.e., June Grade 10 enrollment is less than the number of students tested). In these cases, the percentage presented is capped at 100% but the reported numerator and denominator are still shown in the data.



CPFA Edsight Report Prior to 2022-23



Select Grade: All Grades Combined All Grades 4 6 8 High School (HS)

Year: District: Schools: Tests:

Physical Fitness Tests: Students Reaching Health Standard, Trend

Westport School District

[Export .csv file](#)

Notes:

- The Connecticut Physical Fitness Assessment (CPFA) is administered to all students in Grades 4, 6, 8 and High School (HS).
- Only students assessed in all four areas are included in this calculation.

District	Grade	Test	Students Reaching Health Standard (%)				
			2015-16	2016-17	2017-18	2018-19	2021-22
Westport School District	All Grades	All Tests - District	54.6	38.6	50.0	50.8	45.8
		Curl Up	86.4	83.8	86.3	84.6	82.9
		Mile Run	80.7	80.1	81.5	76.9	75.0
		Push Up	76.7	73.4	77.5	76.0	74.6
		Sit and Reach	76.1	80.0	71.9	72.8	71.1



CPFA EdSight Reports – State Dashboard



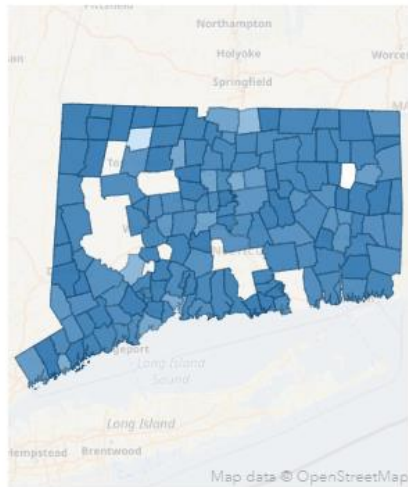
State Dashboard*

Percent of All Students **Participating**¹ in All Four Assessments

93%

Participation in All Four Assessments

< Local Districts Regional Di >

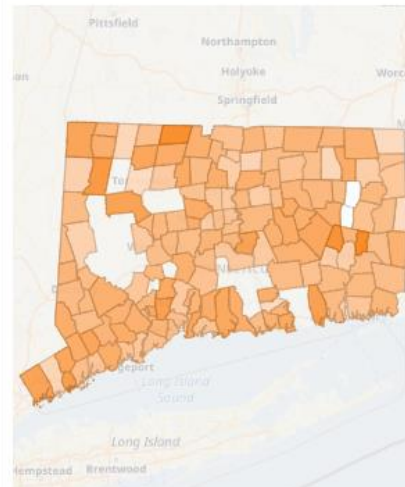


Percent of All Students **Reaching Fitness Zone Standard**²

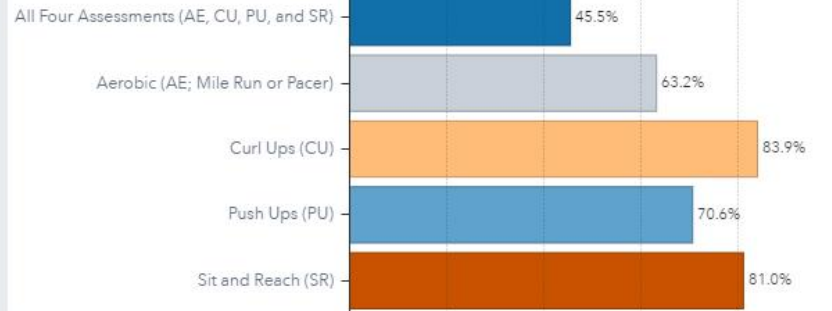
45%

Reaching Fitness Zone Standard

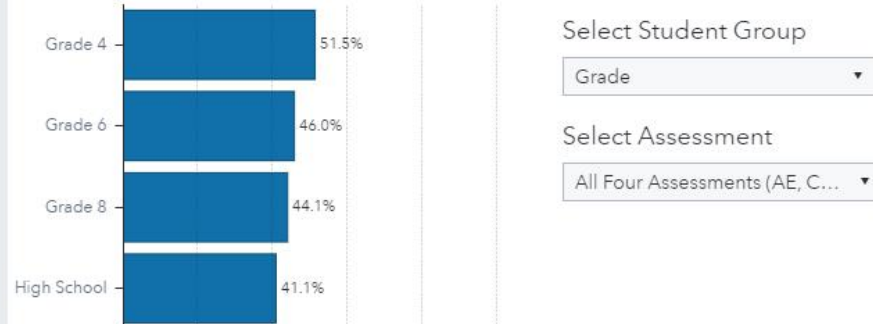
< Local Districts Regional Di >



Percent of All Students Reaching Fitness Zone Standard by Assessment



Percent Reaching Fitness Zone Standard by Student Group and Assessment - All Four Assessments (AE, CU, PU, and SR) by Grade





CPFA EdSight Reports – District Dashboard



District/School Dashboard*

Select District

Westport School District

Select School

School Name

Select Student Group

Grade

Percent of All Students **Participating**¹ in All Four Assessments

96%

Percent of All Students **Reaching Fitness Zone Standard**²

38%

Percent of All Students Reaching Fitness Zone Standard by Assessment

Assessment	Percentage
All Four Assessments (AE, CU, PU, and SR)	38.5%
Aerobic (AE; Mile Run or Pacer)	74.3%
Curl Ups (CU)	83.1%
Push Ups (PU)	72.7%
Sit and Reach (SR)	68.2%

Percent Participating in All Four Assessments by Student

Student Group	Percentage
Grade 4	96.3%
Grade 6	98.4%
Grade 8	97.1%
High School	93.5%

Percent Reaching Fitness Zone Standard by Student Group

Student Group	Percentage
Grade 4	40.7%
Grade 6	34.4%
Grade 8	31.7%
High School	46.7%

Percent Reaching Fitness Zone Standard by Student Group and Assessment - Aerobic (AE; Mile Run or Pacer) by Grade

Student Group	Percentage
Grade 4	87.8%
Grade 6	78.2%
Grade 8	65.3%
High School	65.2%

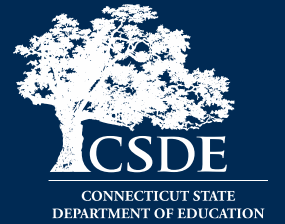
¹ **Participation rate** is the number of students taking all four assessments divided by the June Grade 4, 6, 8, and 10 enrollment. The CSDE provides high schools the flexibility to administer the CPFA at any point in a student's high school career; however, June Grade 10 enrollment is used as the denominator when calculating participation rate. This can result in schools/districts with participation rates over 100% (i.e., June Grade 10 enrollment is less than the number of students tested). In these cases, the percentage presented is capped at 100% but the reported numerator and denominator are still shown in the data.

² The CPFA uses a "Health-Related Fitness Zone" to designate the range of fitness scores associated with good health. Scores meeting or exceeding that standard are considered **Reaching Fitness Zone Standard**. Unless a specific assessment is referenced, this metric refers to students reaching the fitness zone standard on all four assessments.

* Where required, data have been suppressed to protect student privacy. Counts less than six are suppressed and complementary suppression is applied. Percentages are suppressed if either the numerator or denominator is suppressed or if the denominator is less than 20. In charts, such suppression results in a bar or bars not appearing. See our [suppression guidelines](#) for additional information.



CPFA EdSight Reports – Data Tables



Data Tables*

The tables below show CPFA participation and meeting health standard data by state, district, and school. Use the dropdowns to filter the data before exporting. Toggle between state-, district- and school-level using the *State*, *District* and *School* buttons. If no data appear in the school-level results, narrow your search parameters using district, school, or assessment filters to reduce the volume of data returned.

Select District(s) filters only district/school tabs
 Select School(s) filters only school tab
 Select Assessment(s)
 Select Student Group

Districts ▼ Schools ▼ Assessments ▼ --- ▼

< State **District** School >

Student Group ▲		All Students					
DistrictName ▲	Assessment ▲	Participation Numerator*	Participation Denominator*	Participation* (%)	Reaching Fitness Zone Standard Numerator*	Reaching Fitness Zone Standard Denominator*	Reaching Fitness Zone Standard**
Westport School District	All Four Assessments (AE, CU, PU, and SR)	1,528	1,587	96.3%	575	1,494	3i
	Aerobic (AE; Mile Run or Pacer)	-	-	.	1,131	1,523	7.
	Curl Ups (CU)	-	-	.	1,271	1,530	8.
	Push Ups (PU)	-	-	.	1,112	1,530	7.
	Sit and Reach (SR)	-	-	.	1,051	1,540	6i

EXPORT TO EXCEL

¹ **Participation rate** is the number of students taking all four assessments divided by the June Grade 4, 6, 8, and 10 enrollment. The CSDE provides high schools the flexibility to administer the CPFA at any point in a student's high school career; however, June Grade 10 enrollment is used as the denominator when calculating participation rate. This can result in schools/districts with participation rates over 100% (i.e., June Grade 10 enrollment is less than the number of students tested). In these cases, the percentage presented is capped at 100% but the reported numerator and denominator are still shown in the data.

² The CPFA uses a "Health-Related Fitness Zone" to designate the range of fitness scores associated with good health. Scores meeting or exceeding that standard are considered **Reaching Fitness Zone Standard**.

* Where required, data have been suppressed to protect student privacy. Counts less than six are suppressed and complementary suppression is applied. Percentages are suppressed if either the numerator or denominator is suppressed or if the denominator is less than 20. See our [suppression guidelines](#) for additional information.



Lessons Learned – CSDE

File Upload System Enhancements



Year 1 of any data system is a learning experience. Some items we will be working on include:

Year 1 Issue	Proposed Solution
Large numbers of test results makes it hard for districts to determine where gaps exist.	Create a report for districts that summarizes the processed assessments by tests as well as those records that could count as participants.
Lags between validating files and the file being processed can present an opportunity for duplicates to be loaded.	Require files validated without errors but not processed for more than a set period (an hour or day) be validated again before being processed.
Manual Entry is cumbersome.	Try to make the manual entry page more intuitive and user friendly.
It wasn't easy for a district to know if a new student had been tested in prior district.	Look to create a look up feature for processed tests.
Not all SIS vendors were responsive to CSDE suggestions and queries.	Communicate with SIS Users Groups to make any suggested system changes.



Lessons Learned – CSDE

General Clarifications



Issue	Proposed Solution
Questionable use of Medically Exempt result code	Continue outreach to field to further explain the proper use of the medically exempt code (i.e., student unable attend school during the testing window). Reiterate the need to review the Testing Manual Annually.
Stories of staff testing student repeatedly to get better results	Improved messaging around the use of a single, designating an official administration of record.
Late freeze date led to staff leaving for summer break before all data entered and therefore unable to answer questions	Close the testing window earlier (early June) and encourage districts to enter data as soon as practicable to provide as much time as possible to address any problems.
General problems with the administration of the CPFA	Reiterate the expectation that the Test Administrator’s Manual (TAM) will be reviewed annually.
SIS Challenges	Communicate with SIS Users Groups to make any suggested system changes.



Lessons Learned – Wallingford, Westport and West Hartford



- **Karen Veilleux, Wallingford**
- **Christine Wanner, Westport**
- **Lisa Daly, West Hartford**
- **Chris Innaco, Westport**



Lessons Learned – Wallingford



Karen Veilleux, Wallingford



Lessons Learned –Westport



- **Christine Wanner, Westport**
- **Chris Innaco, Westport**



Westport Public Schools



Fitness Test Data and PowerSchool

Benefits

- PowerSchool automatically determines the passing level of each student based on their age when they took the test.
- It is easy to use.
- Creating the file and uploading it to the state site is efficient.

Challenges/Disappointments

- Teachers can't view whole class data that would show all the tests
- If a student is in more than one class and two sets of data are entered for the students, there is no notification from PowerSchool and you can't "see it" in PowerSchool either
- If students took a test on a different date than their classmates, teachers need to look up the date of the test in order to see that test
- Important to put the date that students actually took the test. This ensures that the correct age is used.
- Lots of tests to choose from—make sure to clarify the tests that teachers must use.
- Students/parents can't see their scores on PowerSchool

Tips

- Start planning now!
- Train staff on how to input the data
- Provide a “how-to” document after the training
- Work with a teacher ahead of training staff to work out any glitches
- Clarify when “medically exempt” applies
- As an administrator, print the full data from PowerSchool before creating the file to be uploaded to the state. Look for:
 - Missing data
 - Extra data points
 - Excessive medical exemptions



Lessons Learned – West Hartford



Lisa Daly, West Hartford



Lessons Learned: Year One

West Hartford Public Schools

					Test Date	Test Date	Test Date	Test Date								
CT Fitness Test																
Girls				Medical Excuse	Pacer 15m	Push-ups Score	Curl-ups Score	Sit & Reach Score	Sit & Reach Score	Pacer Fitness Level	Pacer High Fitness Level	Push-ups Fitness Level	Push-ups High Fitness Level	Curl-ups Fitness Level	Curl-ups High Fitness Level	Sit & Reach Fitness Level
Student Name	Student ID	Birthday	Teacher/Teacher					Left	Right							
																No

We started the school year, continuing our historical method of excel spreadsheets with the plan of uploading the CPFA to the PSIS program.

Mistake Number 1



**WHEN THE
SDE ASKS TO
YOU
“VOLUNTEER”
TO BE A TEST
DISTRICT -
YOU SAY YES!**



Mistake Number 2





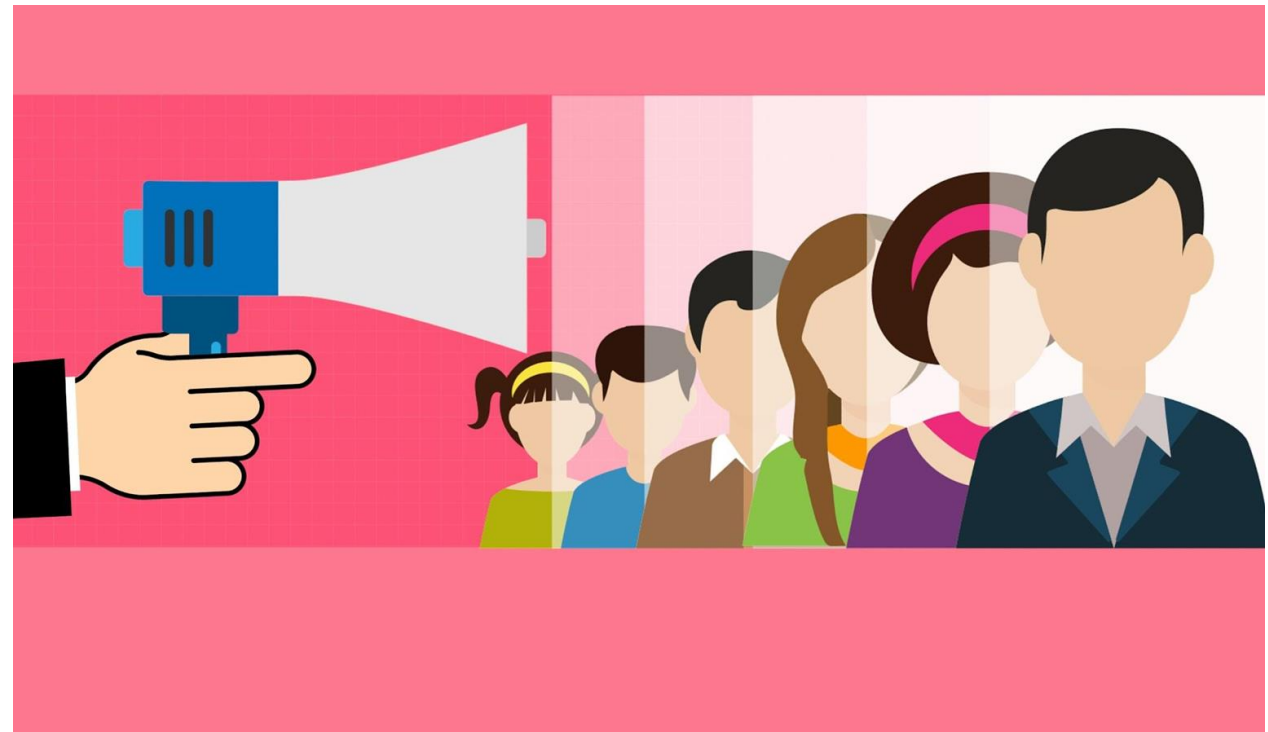
“PLAY NICE IN THE SANDBOX”

DON'T WORRY...



**...EVERYONE
MAKES
MISTAKES.**

**Mistake
Number 3**



Mistake Number 4





We stopped doing our spreadsheets and switched over to PowerSchool solely

MY BIGGEST

MISTAKE

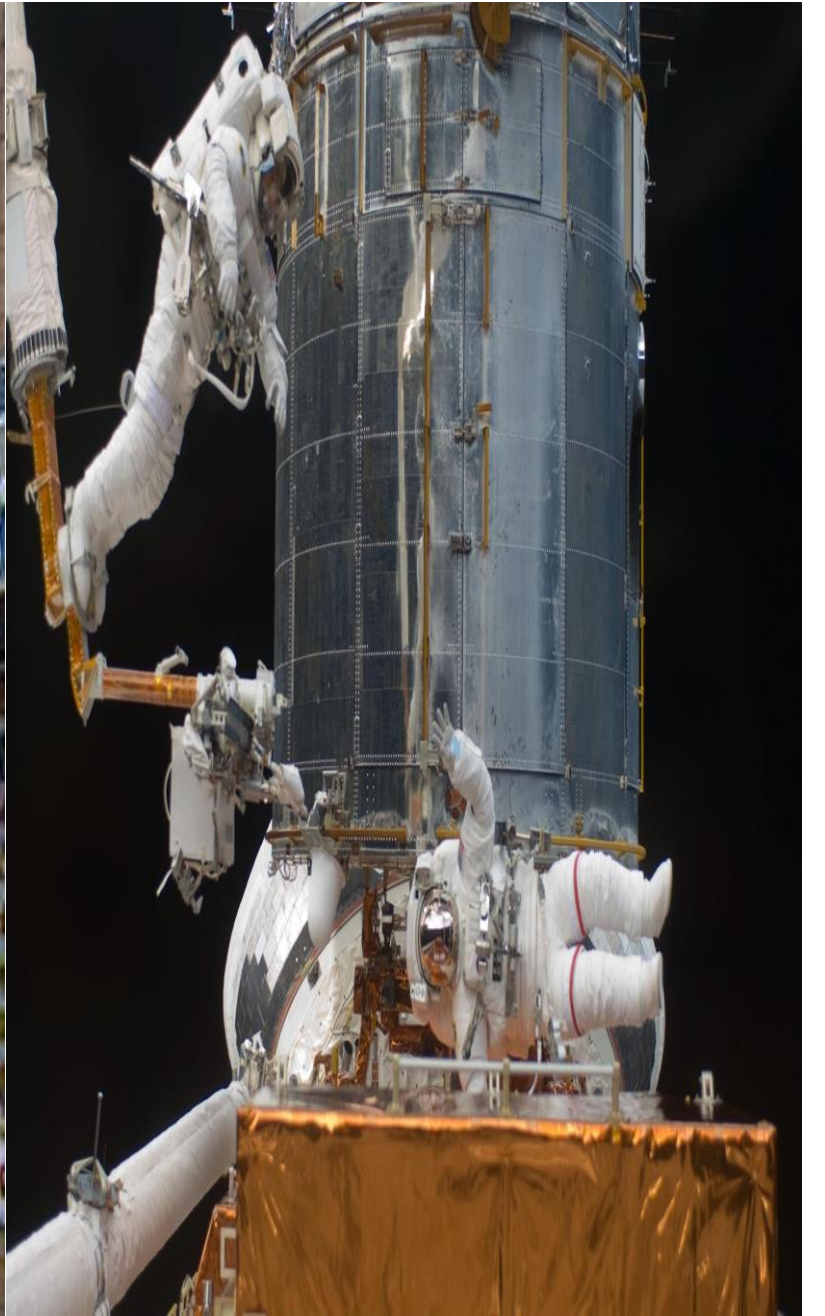
**Mistake
Number**

5



FOLLOW UP

Learn more about our services and solutions. Contact us today for a free consultation. We are here to help you achieve your goals. Our team of experts will work with you to develop a custom strategy that fits your needs. We offer a wide range of services, including marketing, sales, and customer support. Our goal is to help you grow your business and increase your revenue. Contact us today to learn more.



**Even if you
fall on your
face, you're
still moving
forward.**





CSDE Contacts



Ray Martin – Raymond.Martin@ct.gov

Abe Krisst – Abe.Krisst@ct.gov

860-713-6860

