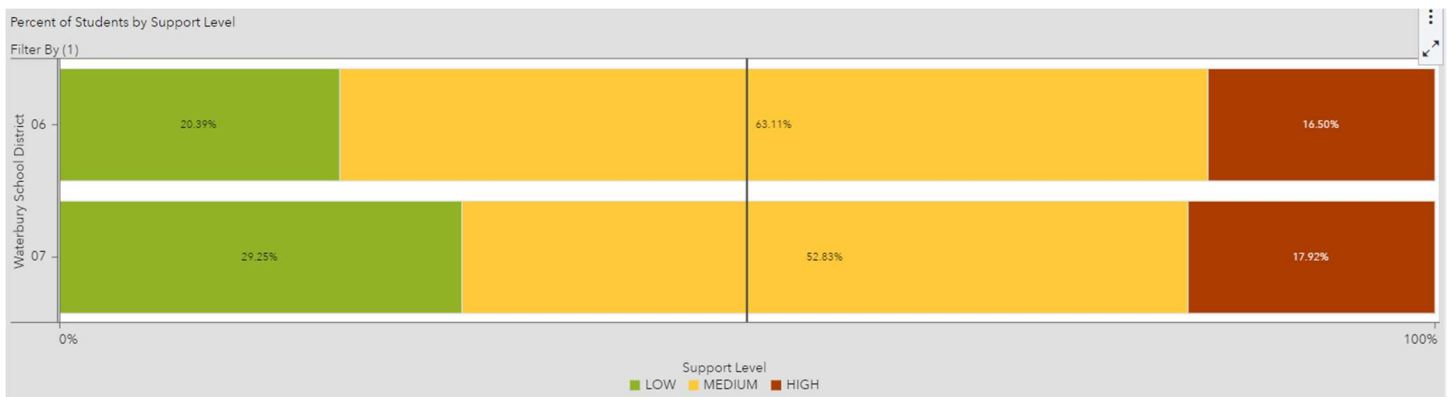


EdSight Secure – EIT/Student Summary

Waterbury Public Schools

- Early Indication Tool (EIT)
 - Early warning system
 - Current students are classified into levels of support based on multiple years of data – low, medium, high
 - Allows for timely student interventions by district/school staff with the ultimate goal of improving student engagement and outcomes; uses statistical methods to identify clusters of students who may be at-risk of missing milestones and/or dropping out
 - Grade 3 – Smarter Balanced ELA proficient
 - Grade 6 – Smarter Balanced ELA AND Math proficient
 - Grade 9 – On track (earned 6 credits)
 - College and Career Ready – SAT ELA AND Math proficient AND passed TWO AP, IB, dual enrollment, CTE, or workplace experience courses

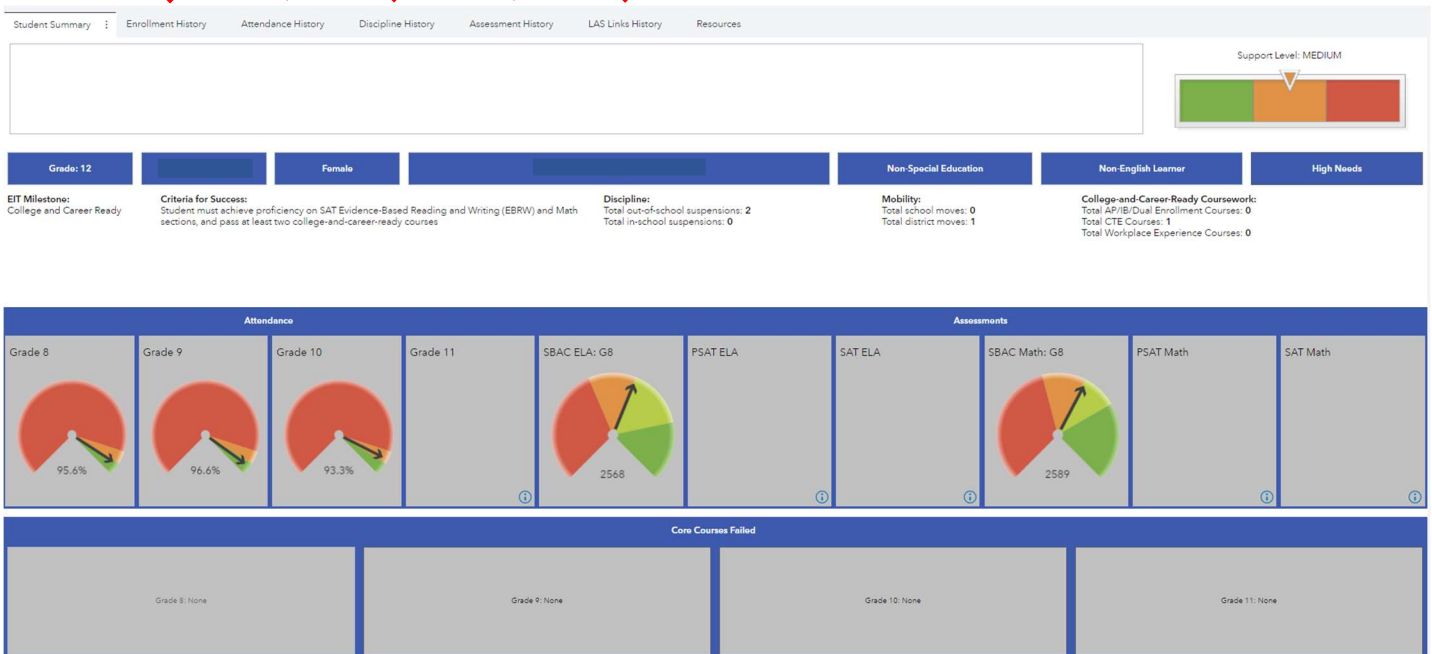


- Can export data, share with appropriate staff
- Chronic Absenteeism, mobility, and suspension data by student
 - Impact on assessments – Smarter Balanced, SAT, LAS Links, NGSS
 - Chronically absent students lose points compared to students that are NOT chronically absent, especially at certain grades
 - There is a significant negative relationship between student mobility and Smarter Balanced results. Students that have unplanned moves typically have lower scale scores than students that do not

- There is a significant negative relationship between suspensions and Smarter Balanced results. Students that have in or out-of-school suspensions typically have lower scale scores than students that do not

- Student Summary

- Helpful for new students or students in need of a data review
- Joins multiple data sources within the state data warehouse, including the Early Indication Tool (EIT), in order to provide a cross-domain, longitudinal student-level report that is printable and exportable
- Detailed data history tabs
 - Enrollment, attendance, discipline, assessments
- Can also access through EIT by double-clicking a student name



Tara Battistoni, M.S.
 Supervisor of Research, Development, and Student Testing
 National Smarter Balanced Performance and Practice Committee Member
 Waterbury Public Schools