

Building Systems Coherence to Strengthen Social-Emotional Behavioral Learning and Supports to Maximize Student Engagement and Success

Windsor Public Schools (WPS) has committed to systemically embedding Social Emotional Learning. Our priority is to support all children and adults in the development of the skills, attitudes, and values to manage life tasks.

WPS High Quality (SEL) FAST FACTS

Superintendent Initiative

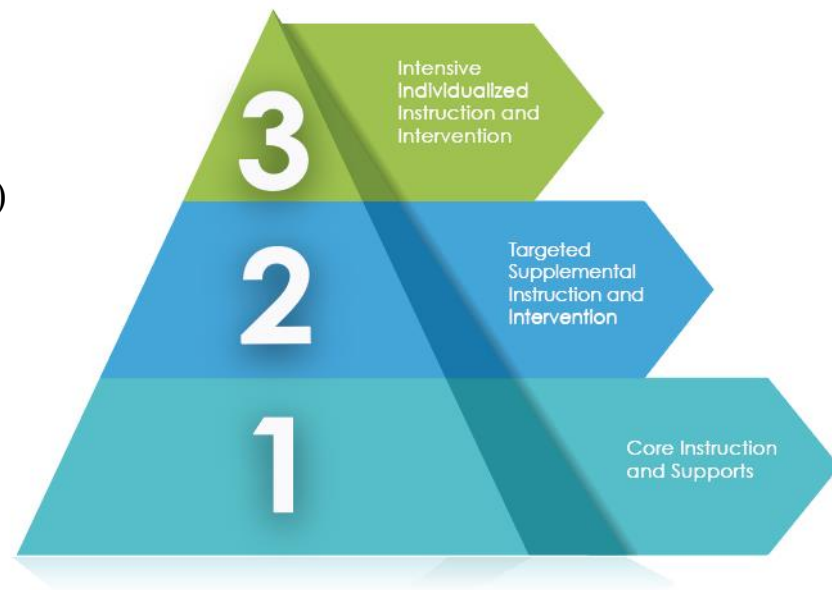
- 1- District SEL Lead
- 11- SEL Specialists
- 6- SEL Committees (Individual Schools)

Data Collection Methods

- Aperture Education (DESSA-MINI)
- (High School SSR)
- Over 90% Student Data Captured

Internal Data Collection

- MTSS - Tier 1,2,3
- Over 1000 Data Points Collected



Social Emotional Learning District Priorities

Priority 1: Road Map to High Quality SEL is developed. SEL audit is conducted to support the phased implementation, integration, and sustainability of high quality SEL programming.

Priority 2: Teacher Commitment and School Climate - SEL is infused throughout academic instruction and classroom routines.

Priority 3: SEL Family and Community Partnerships

Success Toolkit

- ✓ SEL Specific Clusters
- ✓ Digital Engagement
- ✓ Teacher Support PLC's
- ✓ SEL Lunch Bunches
- ✓ Student Led Conferences
- ✓ District-Wide SEL Newsletter



#weareWINDsor

