



CONNECTICUT STATE DEPARTMENT OF EDUCATION

Performance Matters Webinar Series:
EdSight Postsecondary Deep Dive
Including
College and Career Readiness
(CCR) Data

November 3, 2020

Welcome!

Meet the Facilitators



Charles W. Martie, Ph.D.
CT State Department of Education
Performance Office
SAT/PSAT/AP/ACT/IB, P20WIN,
Early Indication Tool



David Alexandro, Ph.D.
CT State Department of Education
Performance Office
Early Indication Tool, Shortage
Areas, FAFSA Completion



Three Takeaways from Today's Session

- EdSight *displays* a wealth of CCR and Postsecondary Data
 - EdSight Public
 - Enrollment and Persistence
 - CCR Course-taking
 - NSC High school reports
 - EdSight Secure
 - FAFSA Completion
 - EIT
 - Student Summary



- SDE *employs* CCR and Postsecondary Data
 - Next Gen Indicators 5,6, and 10
 - P20WIN Reports
 - NESSC Annual Common Data Report
 - LRC Report Card
 - EIT



- K12 preparation *matters* to students':
 - future learning
 - careers and livelihood
 - well-being



What's the difference between the *EdSight* portals?



- Often called *EdSight Public*
- Accessible to all
- Provides detailed information about schools and districts
 - Some suppression for small n sizes
- Offers information on key performance measures that make up Connecticut's Next Generation Accountability System
- Contains a variety of reports, including the Connecticut Report Cards

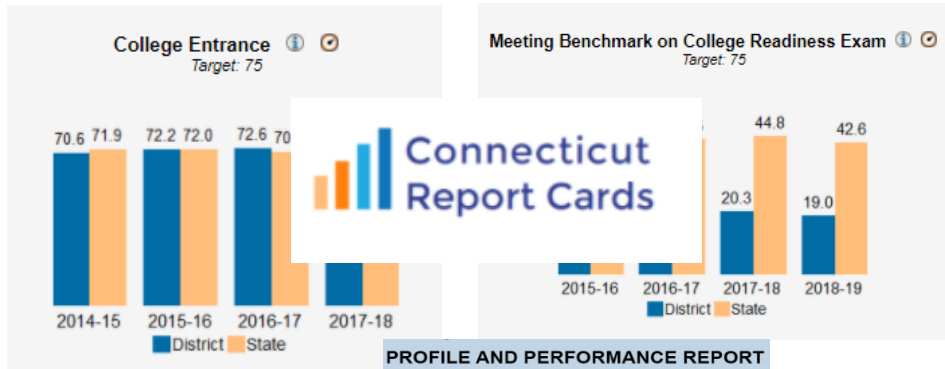
<http://edsight.ct.gov/>



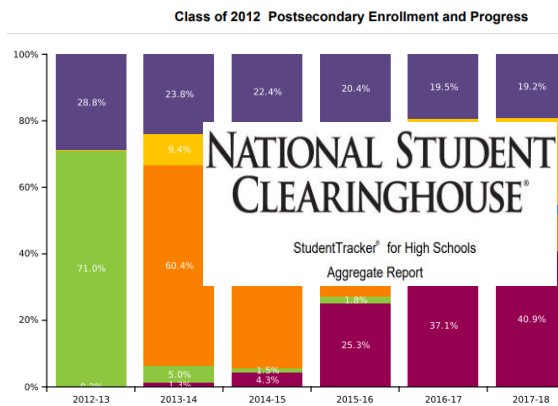
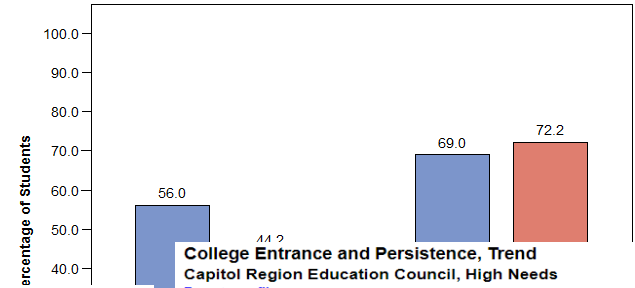
- Accessible to designated school and district users via a secure log-in
- Provides unsuppressed, longitudinal student-level data
- Offers views to detailed, unsuppressed information about schools and districts
- Contains a variety of reports, including the Early Indication Tool, FAFSA Completion Report, and Connecticut SAT School Day results

<https://secure-edsight.ct.gov/>

EdSight Public offers a wealth of CCR and Postsecondary Data



College-and-Career-Readiness Course-Taking
New Britain School District
2018-19



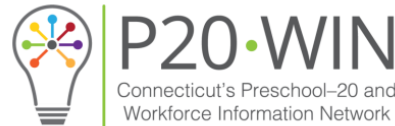
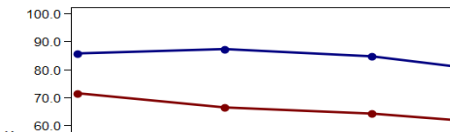
Next Generation Accountability Results

5. Preparation for CCR - Percent Taking Courses	80.0%	75%
6. Preparation for CCR - Percent Passing Exams	42.6%	75%
7. On-track to High School Graduation	88.0%	94%
8. 4-year Graduation: All Students (2018 Cohort)	88.3%	94%
9. 6-year Graduation: High Needs Students (2016 Cohort)	83.3%	94%
10. Postsecondary Entrance (Graduating Class 2018)	70.9%	75%

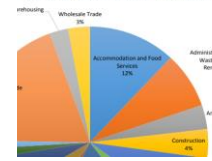
- Notes:
- In this report, year means graduating class of that school year.
 - College entrance refers to the percent of high school graduates from the year.
 - College persistence refers to the percent of students who enrolled in college 1.

District	High Needs	2013-14	
		Entrance (%)	Persistence (%)
Capitol Region Education Council	High Needs	71.6	75.0
	Not High Needs	85.8	89.7

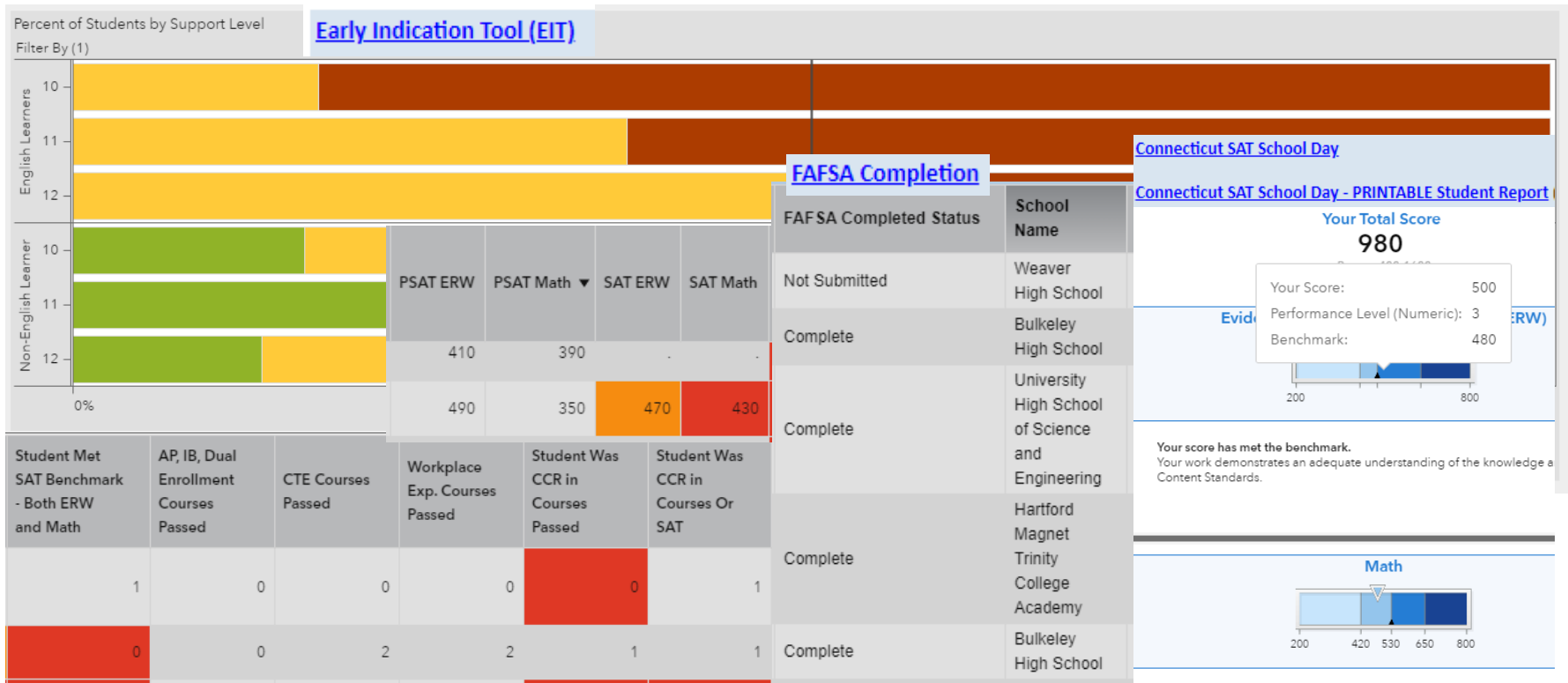
College Entrance
Capitol Region Education Council
Trend



1 Year Employment by NAICS Industry: All W



EdSight Secure does, too



Edsight reports on Enrollment and Persistence

EdSight INSIGHT INTO EDUCATION Connecticut State Department of Education CSDE

Overview Students Educators Instruction **Performance**



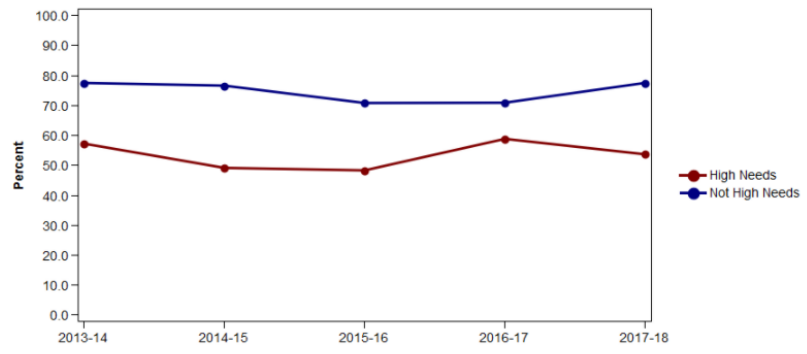
Performance > College/Postsecondary > College Entrance and Persistence

College Entrance and Persistence

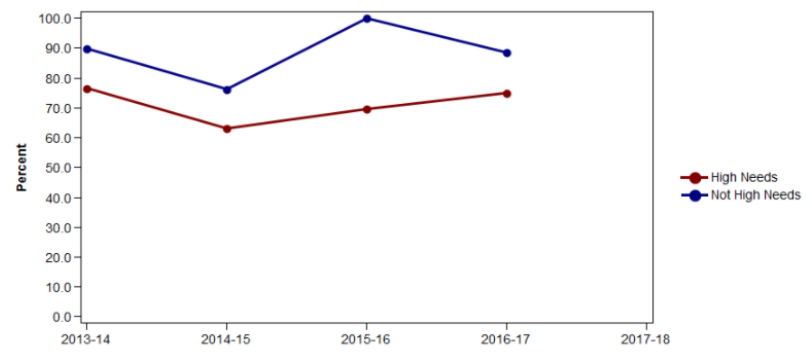
Year: Trend District: New Britain School District Schools: New Britain High School Filter By: High Needs

School	High Needs	2013-14		2014-15		2015-16		2016-17		2017-18	
		Entrance (%)	Persistence (%)	Entrance (%)	Persistence (%)	Entrance (%)	Persistence (%)	Entrance (%)	Persistence (%)	Entrance (%)	Persistence (%)
New Britain High School	High Needs	57.3	76.6	49.2	63.1	48.3	69.6	58.9	75.0	53.7	N/A
	Not High Needs	77.5	89.9	76.6	76.3	70.8	100.0	70.9	88.5	77.6	N/A

College Entrance
New Britain School District, New Britain High School
Trend

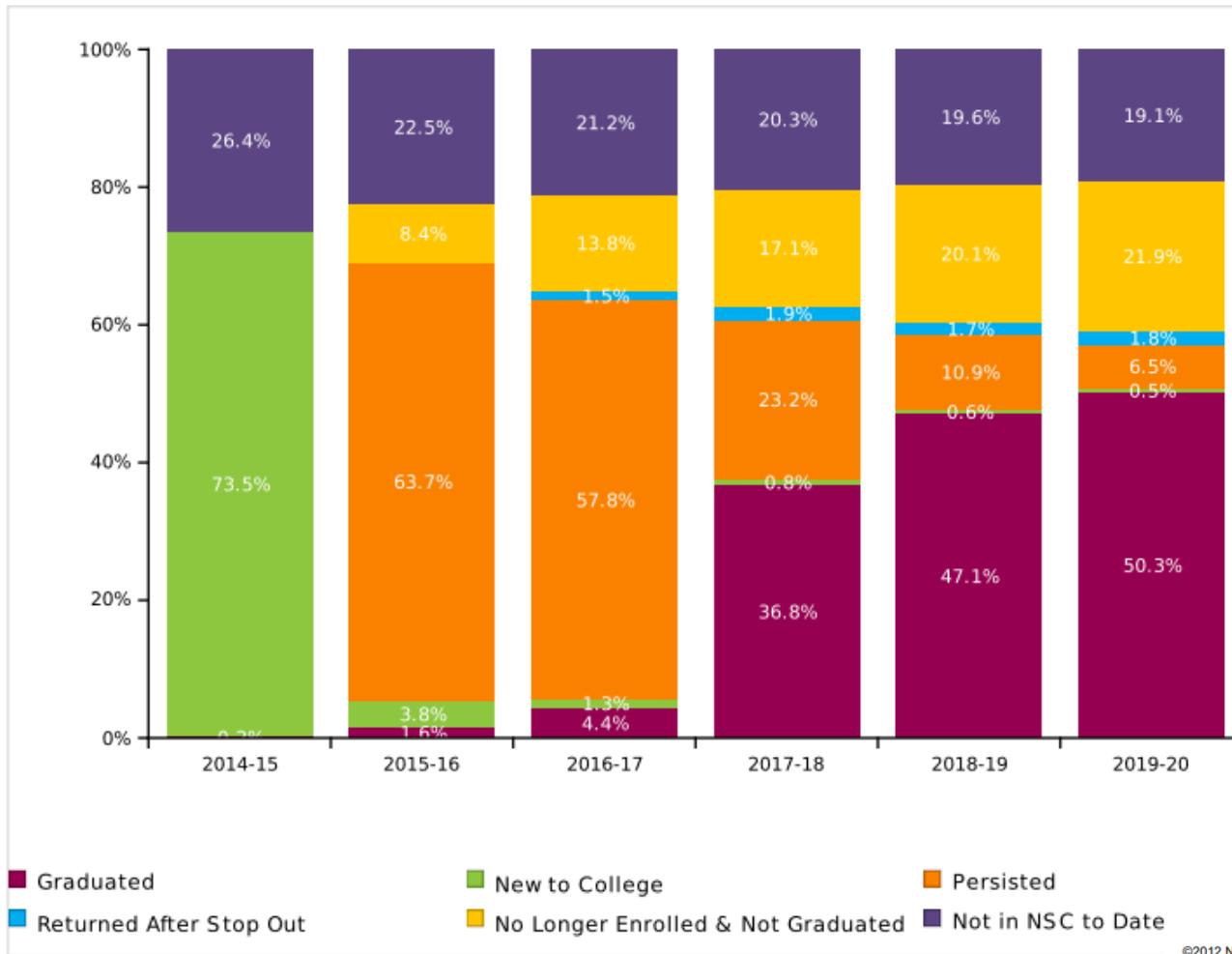


College Persistence
New Britain School District, New Britain High School
Trend



Source: http://edsight.ct.gov/SASStoredProcess/guest?_year=Trend&_district=New+Britain+School+District&_school=New+Britain+High+School&_subgroup=High+Needs+&_program=%2FCTDOE%2FEdSight%2FRelease%2FReporting%2FPublic%2FReports%2FStoredProcesses%2FCollegeEntranceandPersistenceReport&_select=Submit

NSC reports on Postsecondary Enrollment and Progress



Source: http://edsight.ct.gov/NSC%20Reports/9999970hs_10001735_10001735_120829_BASIC_EFFDT_20200815_RUNDT_20200821080325093.pdf, p. 33.



For every 100 CT public HS graduates:

- 73 enroll in college in the first year

- 42 enroll in-state; 31 out-of-state

- 47 attend public colleges;

- 26, private

- 56 enroll in 4-year colleges;

- 17 in 2-year



- 63 will persist into sophomore year

Source:

http://edsight.ct.gov/NSC%20Reports/9999970hs_10001735_10001735_120829_BASIC_EFFDT_20200815_RUNDT_20200821080325093.pdf, p. 33.



For every 100 CT public HS graduates:

- 37 earn a college degree in 4 years
- 50 earn a degree within 6 years
- 22 will enroll and drop out
- 19 won't enroll within 6 years
- 9 are still enrolled



Source:

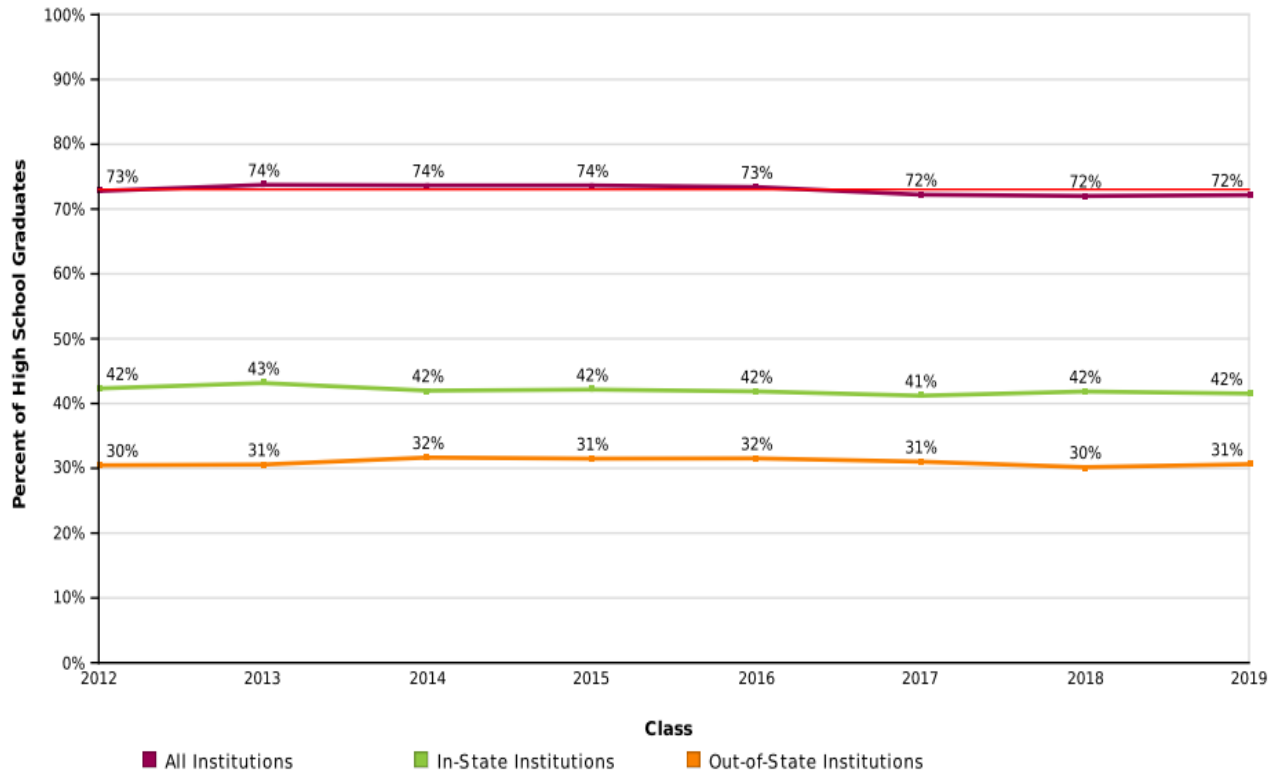
http://edsight.ct.gov/NSC%20Reports/9999970hs_10001735_10001735_120829_BASIC_EFFDT_20200815_RUNDT_20200821080325093.pdf, p. 33.



Not much change in the State-level data over time

Percent of Students Enrolled in College at Any Time During the First Year After High School by Institutional Location

Effective Date = August 15, 2020

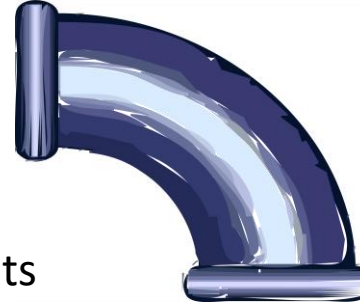


©2012 National Student Clearinghouse. All rights reserved.

Inequities in the PS Pipeline

Gaps in College Enrollment:

- 59% of FRL-eligible vs 82% Non-FRL
- 47% of SWD vs 77% Non-SWD
- 49% of EL vs 75% Non-EL
- 58% of Hispanic/Latino students
- 65% of Black or African American students
- 78% of White students
- 79% of Females vs 67% of Males

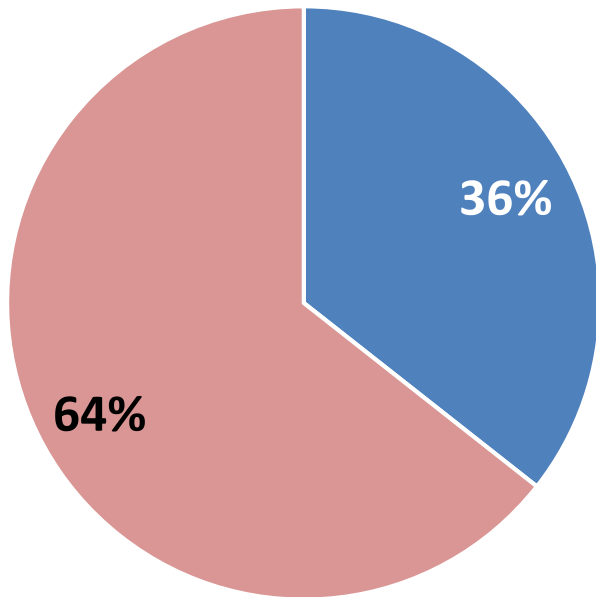


Gaps in 6-year degree completion:

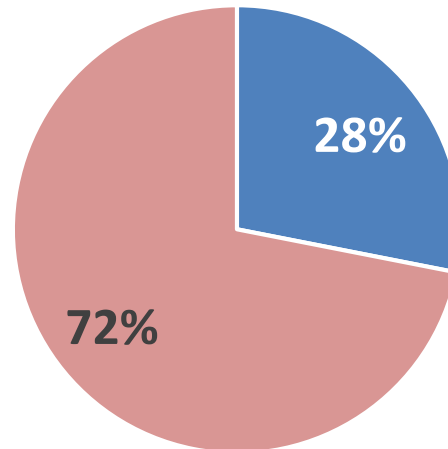
- 25% FRL vs 64% Non-FRL
- 21% SWD vs 54% Non-SWD
- 17% EL vs 52% Non-EL
- 27% of Hispanic/Latino students
- 27% of Black or African American students
- 59% of White students
- 58% of Females vs 43% of Males

As a result, the gaps get worse

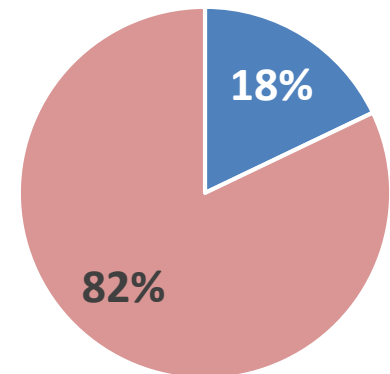
Class of 2014 HS Grads



Class of 2014 Freshmen



Class of 2014 College Grads



- Economically Disadvantaged
- Not Economically Disadvantaged

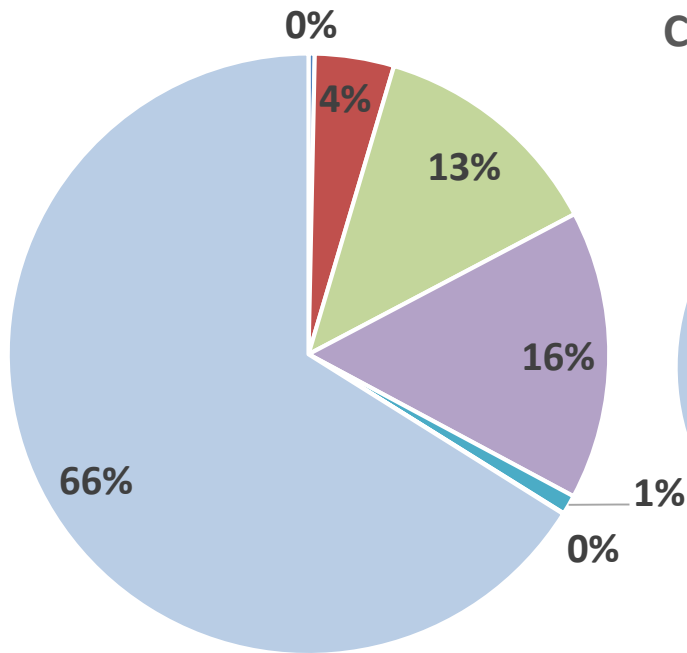


NATIONAL STUDENT
CLEARINGHOUSE

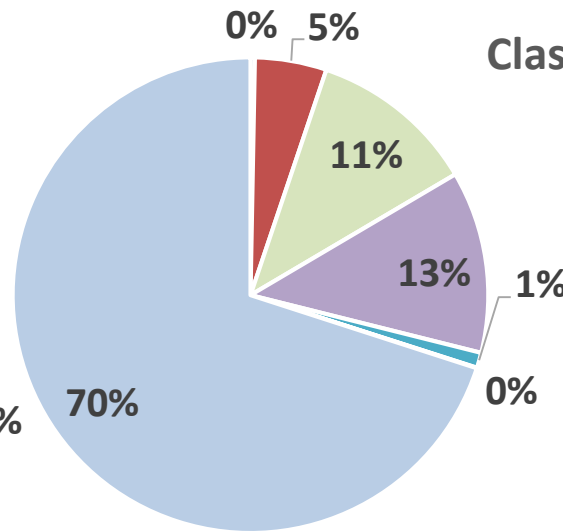
©2012 National Student Clearinghouse. All rights reserved

Fewer students of color enter postsecondary and fewer graduate

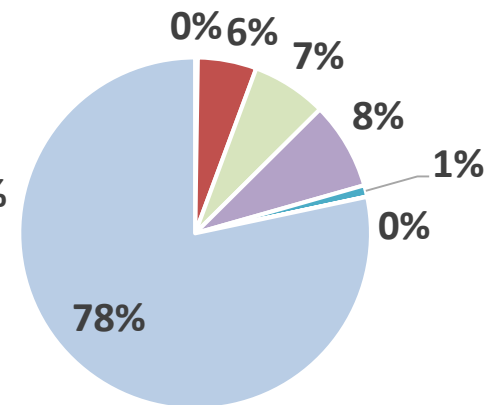
Class of 2014 HS Grads



Class of 2014 Freshmen



Class of 2014 College Grads



- American Indian or Native Alaskan
- Black or African American
- Two or more races
- White

- Asian
- Hispanic/Latino
- Native Hawaiian or Pacific Islander

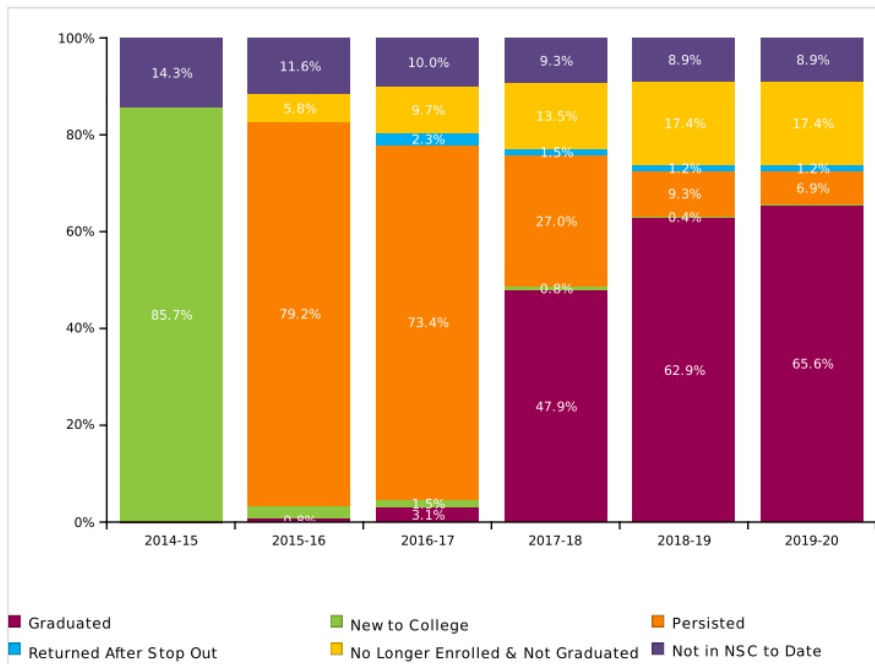
NATIONAL STUDENT CLEARINGHOUSE

© National Student Clearinghouse. All rights reserved.

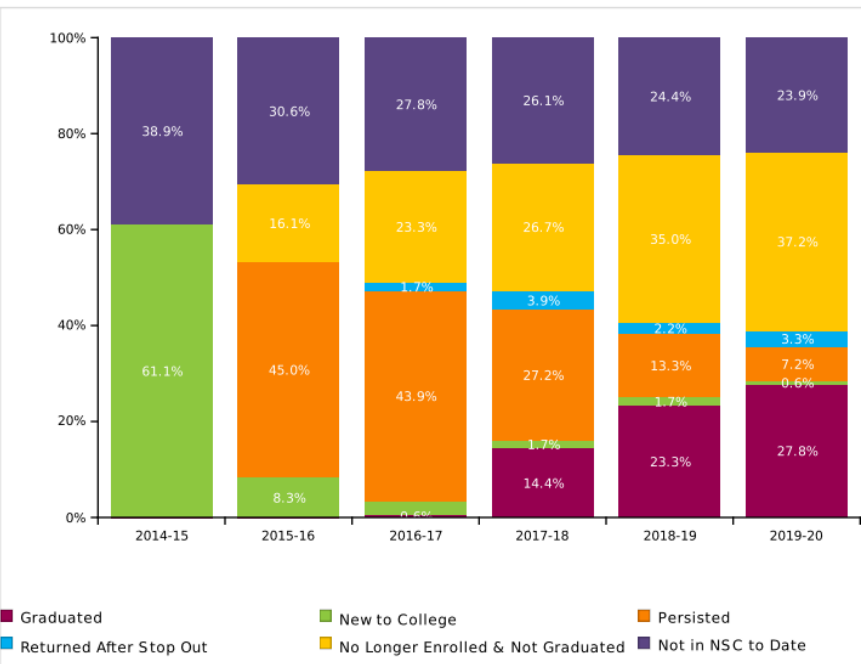


The Gaps between East Lyme HS and New London HS: A Story of School Colors

East Lyme HS



New London HS



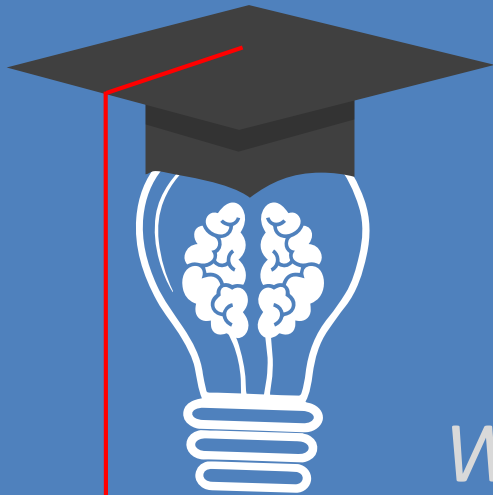
NATIONAL STUDENT CLEARINGHOUSE

©2012 National Student Clearinghouse. All rights reserved

Source:

http://edsight.ct.gov/NSC%20Reports/9999970hs_11111111_HS070177_120829_BASIC_EFFDT_20200815_RUNDT_20200821081700789.pdf, p 33, and
http://edsight.ct.gov/NSC%20Reports/9999970hs_10061326_HS070530_120829_BASIC_EFFDT_20200815_RUNDT_20200821083000502.pdf, p. 33



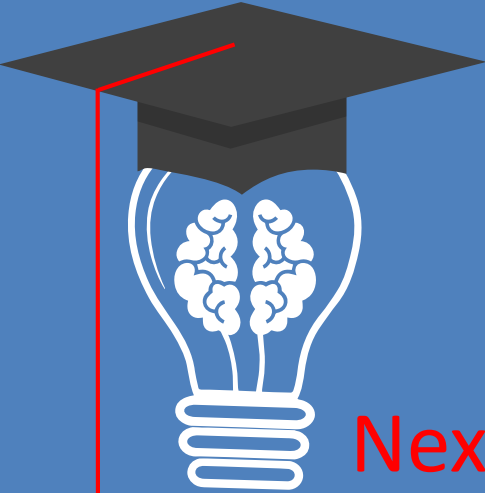


*What is
Connecticut's
Next Generation
Accountability
System?*

A broad set of 12 indicators that help tell the story of how well a school or district is preparing its students for success in college, careers and life.

The system **moves beyond test scores and graduation rates** and instead **provides a more holistic, multifactor perspective** of district and school performance and **incorporates student growth over time.**





Next Gen Accountability



CCR Preparation: Coursework

Preparation for postsecondary and career readiness.

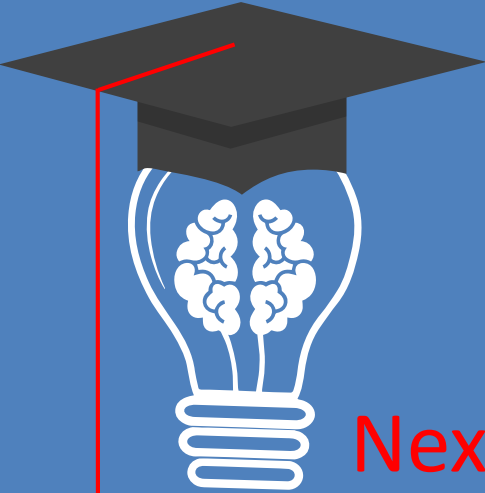
Percentage of students in grades 11 & 12 participating in at least one of the following during high school:

- ✓ Two courses in AP/IB/dual enrollment; or
- ✓ Two courses in one of seventeen CTE categories; or
- or
- ✓ Two workplace experience “courses” in any area.

Gaps in the CCR Results for Indicator 5

80% of students meet CCR statewide

- 74% of FRL-eligible vs 84% Non-FRL
- 68% of SWD vs 82% Non-SWD
- 55% of EL vs 81% Non-EL
- 72% of Hispanic/Latino students
- 70% of Black or African American students
- 84% of White students
- 80% of Females vs 80% of Males



Next Gen Accountability



CCR Preparation: Exams

Preparation for postsecondary and career readiness.

Percentage of students in grades 11 & 12 achieving CCR benchmark on at least one of the following:

- ✓ SAT; or
- ✓ ACT; or
- ✓ AP; or
- ✓ IB.

Gaps in the CCR Results for Indicator 6

43% of students meet CCR statewide

- 20% FRL vs 56% Non-FRL
- 6% SWD vs 49% Non-SWD
- 7% EL vs 44% Non-EL
- 20% of Hispanic/Latino students
- 15% of Black or African American students
- 55% of White students
- 45% of Females vs 41% of Males



Next Gen Accountability



College Enrollment

Postsecondary entrance rate – all students.

Percentage of graduating class who enrolled in a 2- or 4-year postsecondary institution any time during the first year after high school graduation.

Next Generation Accountability

ESSA Milestones

+/- Next Generation Indicators

Archives

Related Links

 +/- School Categories, Support
Schools, and Schools of Distinction

 Video Introduction to CT's Next
Generation Accountability System

 Using Accountability Results
to Guide Improvement

Two-page FAQ

 Sample district communication
presentation

Detailed presentation

Accountability Calculator Tool

 +/- Commissioner's Network Schools
Annual Performance Report

Overview > Next Generation Accountability

Next Generation Accountability Results

 Year:

 District:

 Schools:

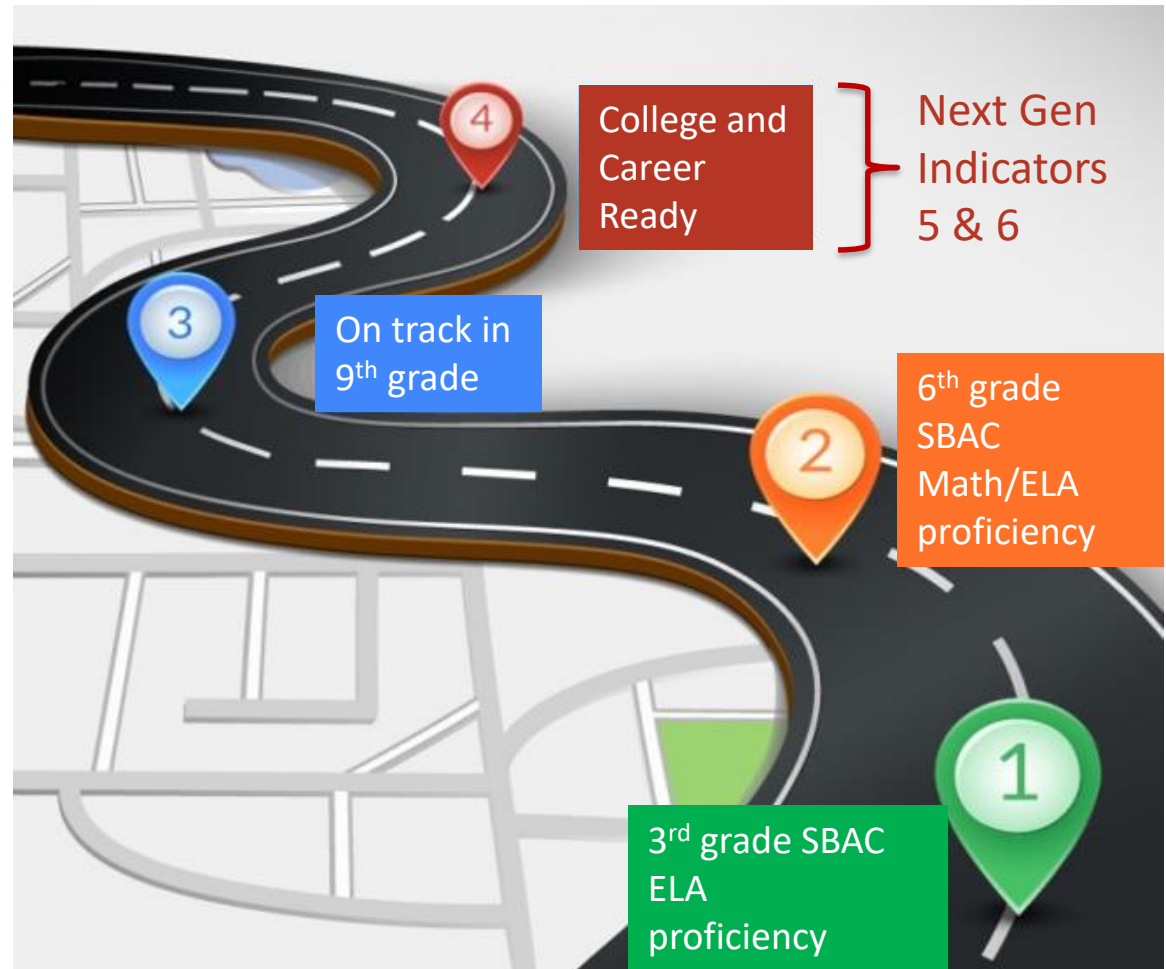
Next Generation Accountability, 2018-19 State of Connecticut

[Export State of Connecticut unformatted .csv file](#)
[Export State of Connecticut formatted .csv file](#)
[Export All Schools and Districts .csv file](#)

Indicator	Index/Rate	Target	Points Earned	Max Points	% Points Earned
1a. ELA Performance Index - All Students	67.7	75	45.1	50	90.2
1b. ELA Performance Index - High Needs Students	58.1	75	38.8	50	77.5
1c. Math Performance Index - All Students	63.1	75	42.0	50	84.1
1d. Math Performance Index - High Needs Students	52.7	75	35.1	50	70.2
1e. Science Performance Index - All Students	63.8	75	42.5	50	85.0
1f. Science Performance Index - High Needs Students	54.2	75	36.1	50	72.2
2a. ELA Academic Growth - All Students	59.9%	100%	59.9	100	59.9
2b. ELA Academic Growth - High Needs Students	55.1%	100%	55.1	100	55.1
2c. Math Academic Growth - All Students	62.5%	100%	62.5	100	62.5
2d. Math Academic Growth - High Needs Students	55.2%	100%	55.2	100	55.2
2e. Progress Toward English Proficiency - Literacy	60.0%	100%	30.0	50	60.0
2f. Progress Toward English Proficiency - Oral	52.1%	100%	26.1	50	52.1
4a. Chronic Absenteeism - All Students	10.4%	<=5%	39.2	50	78.3
4b. Chronic Absenteeism - High Needs Students	16.1%	<=5%	27.8	50	55.7
5. Preparation for CCR - Percent Taking Courses	80.0%	75%	50.0	50	100.0

MILE MARKER APPROACH

Markers serve as **targets** for students, and as **dependent variables** in the EIT model





EARLY INDICATION TOOL (EIT)

OVERVIEW

The EIT is a K-12 system that uses statistical methods to identify clusters of students who are at-risk of missing milestones and/or dropping out, and *ultimately facilitates more timely interventions by assigning targeted student support levels.*

INFORMATION & ACCESS

The EIT provides **color-coded longitudinal data** and **visualizations** to school and district users in a secure fashion via EdSight Secure.

THE DASHBOARD

Early Indication Tool

School/Program | Current Grade | Support Level | Gender | Race/Ethnicity | High Needs | Special Education | English Learner

Filter = Special Education Status = 'Special Education'; Current Grade = '06'; Support Level = 'High'

SASID Search: Enter SASID... | Attendance (Last yr) | Perf. Level ELA (Last yr) | Perf. Level Math (Last yr) | Total School Moves | Total ISS (2 yrs) | Total OSS (2 yrs)

Current Grade	Special Education Status	English Learner Status	Race/Ethnicity	Gender	High Needs Status	Support Level	Attendance Rate (Last yr)	Attendance Rate (2yrs ago)	SB ELA Score (Last yr)	Perf. Level ELA (Last yr)	SB Math Score (Last yr)	Perf. Level Math (Last yr)	SB ELA Score (2 yrs ago)	SB Math Score (2 yrs ago)	Total School Moves	Total ISS (2 yrs)	Total OSS (2 yrs)
06	Special Education	Non-English Learner	Hispanic/Latino of any race	Male	High Needs	High	88.5%	90.1%	2340	1	2429	1	2359	2456	0	0	0
06	Special Education	Non-English Learner	Asian	Male	High Needs	High	88.5%	98.3%	2430	1	2471	2	2355	2412	0	0	0
06	Special Education	Non-English Learner	Hispanic/Latino of any race	Male	High Needs	High	89.0%	90.7%	2534	3	2505	2	2382	2442	0	0	0
06	Special Education	Non-English Learner	Two or More Races	Female	High Needs	High	89.6%	94.5%	2475	2	2470	2	2499	2437	0	0	0
							Average:	Average:	Average:	Average:	Average:	Average:	Average:	Average:	Maximum:	Maximum:	Maximum:
							94.1%	95.0%	2398	1	2413	1	2366	2393	2	7	4

Filters

One row per student (*)

Options to maximize, save, and export

Summary data by column

Demographics and special populations status fields

Two years of attendance, achievement, mobility, discipline, and retention

Targeted Student Support Level
(as determined by the EIT model)

* Additional fields, including student ID, name, and date of birth, are displayed in the EIT

FAFSA COMPLETION REPORT

OVERVIEW

This report provides authorized users in districts that have executed a data use agreement with **secure access to the FAFSA Completion Status for currently enrolled Grade 12 students.**

THE DATA TAB

The screenshot shows the 'FAFSA Completion' report interface. At the top, there are tabs for 'FAFSA Completion Data' and 'Resources'. Below this, the header indicates 'Sample School District'. A 'Filters' section contains 'School/Program' and 'FAFSA Completion Status' dropdowns. A 'Student Search' section includes 'SASID Search' and 'Name Search' input fields. A table displays student data with columns for SASID, First Name, Middle Initial, Last Name, FAFSA Completed Status, and School Name. Annotations with boxes and lines point to the filters, search fields, and the 'FAFSA Completed Status' column. A separate box on the right points to table control icons (maximize, save, export, refresh).

SASID	First Name	Middle Initial	Last Name	FAFSA Completed Status	School Name
0123456789	SEAN	J	BAM	Not Submitted	Sample High School
0123456789	MAYA	L	GILLIS	Not Submitted	Sample High School
0123456789	ELISABETH	W	HENDERSON	Incomplete	Sample High School
0123456789	ROCCO	L	KING	Not Submitted	Sample High School
0123456789	ISABEL	E	LEWIS	Not Submitted	Sample High School
0123456789	CELIA	P	MOODY	Complete	Sample High School
0123456789	ROBERT	D	NICHOLS	Complete	Sample High School
0123456789	YANA	C	VELEZ	Complete	Sample High School
0123456789	CHRIS	R	WILKERSON	Not Submitted	Sample High School



FAFSA Completion Status

Improvement in FAFSA Completion Numbers

- **Increased buy-in** from districts, schools, and families
 - 96% of high school seniors in Connecticut public schools were included in the FAFSA Completion report
 - More than 60% of Connecticut's high school seniors completed FAFSA before May 1
 - At the end of June, Connecticut's FAFSA Completion Rate was 69.4% -- 4th in the U.S.

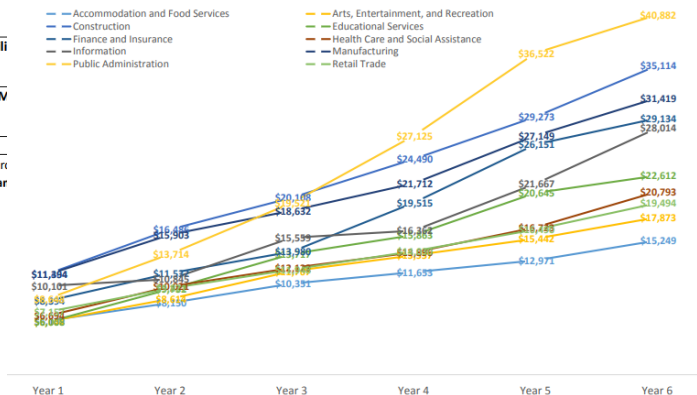


While you're on EdSight, check out these gems

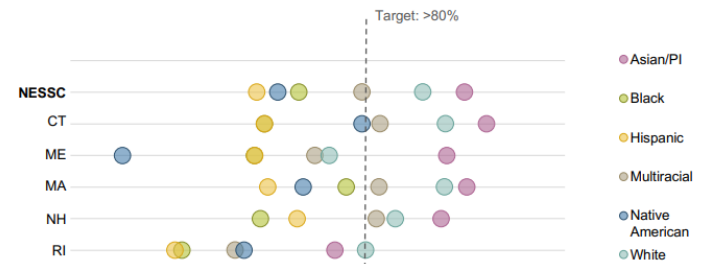


Student Group	Graduating Class of 2010		Graduating Class of 2011		Graduating Class of 2012		Graduating Class of 2013		Graduating Class of 2014	
	Percent Enrolled in 16 Months	Percent Earning 24 Credits	Percent Enrolled in 16 Months	Percent Earning 24 Credits	Percent Enrolled in 16 Months	Percent Earning 24 Credits	Percent Enrolled in 16 Months	Percent Earning 24 Credits	Percent Enrolled in 16 Months	Percent Earning 24 Credits
Gender										
Female	39.6%	66.7%	42.2%	68.5%	42.1%	69.6%	43.6%	70.1%	42.2%	69.0%
Male	39.0%	62.0%	39.4%	62.1%	40.2%	63.8%	40.3%	63.7%	39.6%	62.7%
Race/Ethnicity										
American Indian	47.5%	58.6%	41.1%	63.8%	44.3%	61.7%	42.0%	66.7%	43.0%	48.1%
Asian	49.9%	79.8%	50.7%	79.7%	50.5%	80.2%	50.9%	80.9%	51.8%	80.5%
Black/African American	38.4%	49.8%	43.0%	51.1%	43.3%	52.3%	45.3%	50.1%	45.6%	51.1%
Hispanic/Latino										
Native Hawaiian										
Two or More Races										
White										

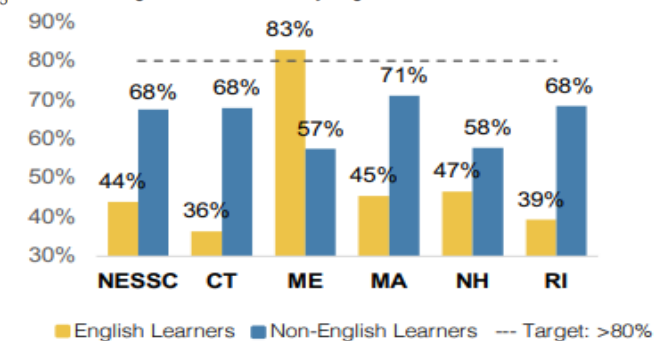
AVERAGE EARNINGS OF CT WORKERS FROM THE CLASS OF 2010 BY YEAR SINCE HS GRADUATION AND FINAL OCCUPATION: NO COLLEGE



College Persistence Rates by State College Entry Year 2017



College Enrollment Rates by English Learner Status



All P20WIN reports are available at: <https://www.ct.edu/p20win/requests>. NESSC Reports are available at: <https://www.newenglandssc.org/wp-content/uploads/2019/11/2019-NESSC-Common-Data-Report-Final.pdf>

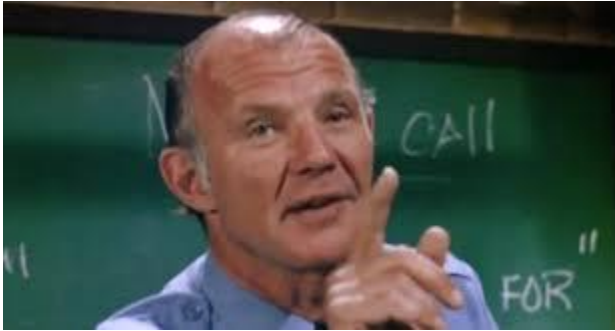


Those Three Takeaways?

- EdSight *displays* a wealth of CCR and Postsecondary Data
- SDE *employs* CCR and Postsecondary Data
- K12 preparation *matters*



And hey! Hey!



Let's be careful out there

and

don't forget to **Vote!**



Questions and Answers



THANK YOU!

If you have additional questions, please contact:

Charles Martie, Ph.D., Education Consultant

charles.martie@ct.gov

David Alexandro, Ph.D., Education Consultant

david.alexandro@ct.gov

