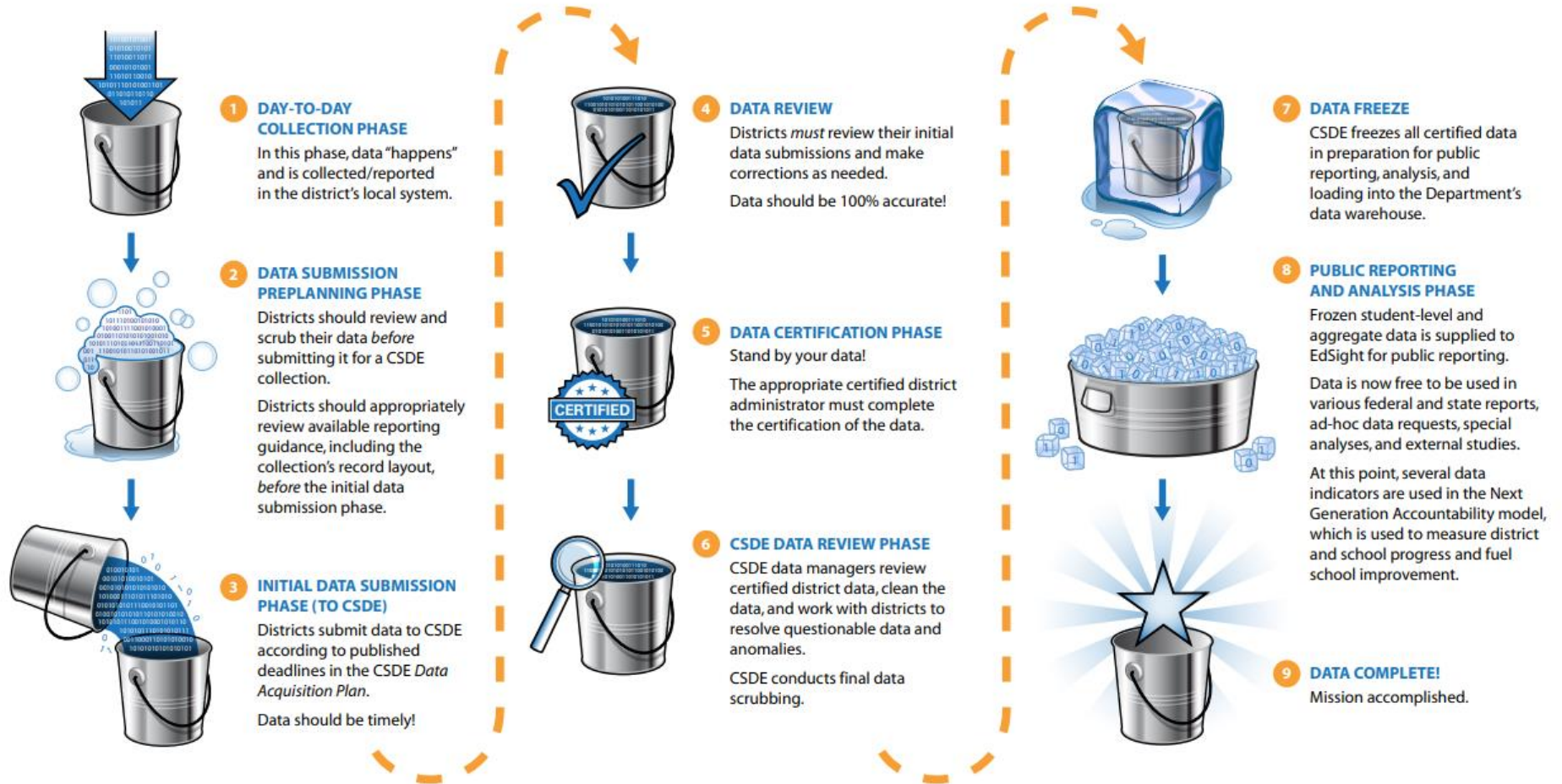


## DATA LIFE CYCLE

The Connecticut State Department of Education (CSDE) collects vast amounts of data about students, schools, and educators. This information undergoes a rigorous procedure of collection, review, and validation before it is reported to the public. Here's how that process works.



Data Collections	Data Year	Open Date	Submission Due Date (TIMELY)	Final Revision Date (ACCURATE)	FREEZE DATES
Public School Information System (PSIS) <i>Registration</i>	2024-25	Always Open	Cases Resolved within 10 school days.	No Open Cases more than 20 school days old.	N/A
<i>2024-25 Summer Roll Up</i>		Always Open	N/A	August 1, 2024	N/A
<i>Monthly Student Attendance</i>		1 <sup>st</sup> of Every month	10 <sup>th</sup> of the month	N/A	
<i>October</i>		October 1, 2024	October 30, 2024	January 8, 2025	F0 Nov 1, 2024 F1 Jan 31, 2025 F2 Jan 31, 2026
<i>June</i>		1 <sup>st</sup> week of June 2025	July 1, 2025	July 19, 2025	July 29, 2025
<i>Student Address Collection</i>	2024-25	Fall-November 1 <sup>st</sup>	November 15, 2024		
		Spring-May 1 <sup>st</sup>	May 20, 2025		
Teacher - Course - Student (TCS)	2024-25	January 2025	July 9, 2025	August 20, 2025	September 3, 2025
Student Achievement Module (SAM, <i>housed within TCS</i> )	2024-25	May 2025	N/A	August 20, 2025	September 3, 2025
ED166: Student Disciplinary Offense Collection	2024-25	October 2024	July 9, 2025	August 20, 2025	September 3, 2025
Due Process Hearing Requests - Resolution Meetings	2024-25	Always Open	15 business day reporting rule	N/A	August 1, 2025
CT-SEDS Evaluation Timelines (APR Ind. 11)	2024-25	Always Open			November 15, 2025
CT-SEDS Oct 1 Child Count (previously SEDAC)	2024-25	Always Open			December 1, 2024
CT-SEDS Restraint & Seclusion	2024-25	Always Open	2 business day reporting rule	2-week revision rule	August 1, 2025
Early Childhood Outcomes (ECO)	2024-25	Always Open	Pretest October 1, 2024 Posttest June 30, 2025	October 15, 2025	November 1, 2025
Kindergarten Inventory	2024-25	October 17, 2024	December 13, 2024	January 10, 2025	February 28, 2025
Directory Manager: Verification of Facilities	2024-25	Always Open	May 1, 2024	June 15, 2024	N/A
Directory Manager: Verification of Users/Roles	2024-25	Always Open	N/A	N/A	N/A
ED159: Nonpublic School Report	2024-25	October 1, 2024	N/A	November 1, 2024	N/A
ED165: Connecticut School Data Report	2024-25	May 15, 2025	June 20, 2025	July 21, 2025	August 20, 2025
Noncertified Staff Collection	2024-25	November 5, 2024	December 17, 2024	January 7, 2025	January 31, 2025
Educator Data System <i>Beginning of year</i>	2024-25	Always Open	September 16, 2024	October 31, 2024	February 1, 2025 <i>10/1 Reporting Extract</i>
<i>End of Year Certification</i>		June 1, 2025	June 30, 2025	July 18, 2025	July 25, 2025
ED204: Title I Part D Neglected and Delinquent Evaluation	2024-25	September 18, 2024	October 16, 2024	October 21, 2024	N/A
ED205: Title I Evaluation Report	2024-25	September 11, 2024	October 16, 2024	October 21, 2024	N/A
Profile and Performance Report (PPR) Narratives	2024-25	May 1, 2025	May 30, 2025	June 27, 2025	July 9, 2025
Educator Vacancy Survey <i>Collection 1</i>	2024-25	August 12, 2024		August 26, 2024	
<i>Collection 2</i>	2024-25	February 10, 2025		February 24, 2025	

Testing Windows and Related Dates	Window/Dates		
English Language Proficiency - LAS Links	January 2 - March 7, 2025		
Connecticut Alternate Assessment English Language Proficiency (CAAELP)	January 13 - March 7, 2025		
Connecticut Smarter Balanced Summative Assessments	March 24 - May 30, 2025		
Connecticut SAT School Day	March 3-April 23, 2025		
Connecticut Alternate Assessment (CTAA)	March 24 - May 30, 2025		
Next Generation Science Standards (NGSS) Summative Assessments	March 24 - May 30, 2025 (Grade 11 begins on February 3, 2025)		
Connecticut Alternate Science (CTAS) Assessment (Upload Window through the Data Entry Interface)	Upload Dates: March 24 - May 30, 2025 (The CTAS can be administered all year).		
Secure Browser Go Live	June 21, 2024		
Test Information Delivery Engine (TIDE) Go Live	August 22, 2024		
Centralized Reporting System (CRS)	August 27 2024		
Assessment Viewing Application (AVA)	August 27, 2024		
Smarter Balanced Interim Assessments Go Live	August 27,2024		
NGSS Interims	August 27, 2024		
Data Entry Interface (DEI)	March 24-May 30, 2025		
Data Recognition Corporation 2023-24 INSIGHT opening	December 2024		
Assessment Related Collections	Open Date	Submission Due Date (TIMELY)	Final Revision Date (ACCURATE)
<b>Assessment Accommodations/Alternate Assessments</b>			
Connecticut SAT School Day Accommodations Entry through College Board's SSD	November 2024	NA	January 2025
Accommodations/Designated Supports Collections via TIDE – Smarter Balanced, NGSS	Fall 2024	Must be submitted prior to testing	May 30, 2025
LAS Links Accommodation Entry Window	December 2024	March 2025	March 2025
Connecticut Physical Fitness Assessment (CPFA) Individual Student Collection	March 2025	June 13, 2025	July 18, 2025

**Important Miscellaneous Testing Collections/Dates**

LAS Links Domain Exemptions	November 2024	December 2024	March 7, 2025
CAAELP Domain Exemptions	December 2, 2024	February 28, 2025	February 28, 2025
Medical Exemptions (LAS Links/CAAELP)	NA	As requested, until 1 week after test window closes	March 14, 2025
Medical Exemptions (Smarter Balanced, NGSS, CT SAT School Day, CTAA, CTAS)	Processed at the end of testing window	As requested, until 1 week after test window closes	CT SAT School Day: May 2, 2025 CAAELP June 6, 2025 NGSS, Smarter Balanced, CTAA, CTAS: June 6, 2025
Appeals Entry – LAS Links	January 2, 2025		March 7, 2025
Appeals Entry - CAAELP	Processed throughout testing window		January 13,-March 7, 2025
Appeals Entry – Smarter Balanced, NGSS, CTAS, and CTAA	Processed throughout testing window		May 30, 2025
Alternate Assessment Eligibility (Eligibility form within CT-SEDS for accurate rostering)	NA	ELP Assessments (CAAELP) and Grade 11 December 20, 2024 CTAA/CTAS Grades 3-8 February 1, 2025	CAAELP and Grade 11 February 28, 2025, and CTAA/CTAS Grades 3-8 May 30, 2025
Early Stopping Rule	December 2, 2024		DA Submission of ESR Requests: CAAELP- January 13, 2025; CTAA/CTAS- March 1, 2025
PSIS Freeze Zero Populated to TIDE	November 2024		
Current PSIS Registration Populated to College Board	TBD		
Smarter Balanced Interim Assessment Reporting Portal (CRS) - Go Live	August 27, 2024		