



A UNIVERSE OF OPPORTUNITIES



CONNECTICUT
Education

2024-2025

Using EdSight Secure with TCS Data

March 25, 2025

Connecticut State
Department of Education

What's the **difference** between the *EdSight* portals?



- Often called *EdSight Public*
- Accessible to all
- Provides detailed information about schools and districts
 - Some suppression for small n sizes
- Offers information on key performance measures that make up Connecticut's Next Generation Accountability System
- Contains a variety of reports, including the Connecticut Report Cards

<http://edsight.ct.gov/>



- *EdSight Secure* is accessible to designated school and district users via a secure log-in
- Provides unsuppressed, longitudinal student-level data
- Offers views to detailed, unsuppressed information about schools and districts
- Contains a variety of reports, including the Early Indication Tool and Student Summary

<https://secure-edsight.ct.gov/>

How do I gain access to *EdSight Secure*?



Find your LEA Security Manager at: <https://public-edsight.ct.gov/overview/find-contacts>

EdSight Secure Resource Library

Welcome to EdSight Secure!

Dashboard

EdSight INSIGHT INTO EDUCATION
SECURE

Connecticut State Department of Education | CSDE

Educator Preparation Providers (EPPs) - Click here to access the EPP Quality Measures Report!

Students	Educators	Instruction	Performance
<p>Attendance Reports Monthly Attendance (Updated 2/25/25) Yearly Attendance (Updated 8/22/24)</p> <p>Early Indication Tool (EIT) (Updated every Friday)</p> <p>EIT for Teachers (Updated every Friday) Provides data from EIT and other sources in one exportable file. Data can be integrated with your existing district data management system or used with the provided Data Lookup Tool (instructions). Data from this tool can be shared with teachers in order to decrease the amount of time spent on formal assessment upon return to school.</p> <p>English Learner (EL) Status Report</p> <p>Enumeration Report (Updated 4/8/24) Available for local and regional district-level users only. Provides grade-level counts of PK-12 student enrollment for students who reside in the district's jurisdiction.</p> <p>FAFSA Completion (Updated daily)</p> <p>Student Summary</p>	<p>Educator Diversity Dashboard</p> <p>Educators With Active Endorsements</p>	<p>Teacher Course Student (TCS) Accountability Indicators Report (New! 10/10/24)</p> <p>Indicator 7 - On-track to High School Graduation (Updated 10/10/24)</p> <p>Resource Allocation Review (RAR)</p> <p>Students Receiving Rigorous Coursework Letters (Updated 12/20/24)</p>	<p>Adjusted Cohort Graduation Rates (Updated 6/6/24)</p> <p>CMT/CAPT Science</p> <p>College Enrollment and Graduation (New! 12/27/24)</p> <p>Connecticut Alternate Assessment (CTAA) (Updated 7/10/24)</p> <p>Connecticut SAT School Day (Updated 6/22/24)</p> <p>Connecticut SAT School Day - PRINTABLE Student Report (for current students only) (Updated 6/22/24)</p> <p>Effect of SASID Changes on Secure Student Growth Reports</p> <p>LAS Links Achievement/Mastery (Updated 5/18/24)</p> <p>LAS Links Growth (Updated 5/18/24)</p> <p>Next Generation Science Standards(NGSS) Assessment (Updated 8/2/24)</p> <p>Seal of Biliteracy (Updated 3/12/25)</p> <p>Seal of Biliteracy-Eligible Graduates (New! 3/20/25)</p> <p>Smarter Balanced Achievement (Updated 8/8/24)</p> <p>Smarter Balanced Growth (Updated 8/13/24)</p>

EdSight Secure Resource Library

Need Help? Contact Us

Accessibility Information

EdSight Public

Click the link on the EdSight Secure welcome page to access the **Resource Library**. Additional videos are available on the [CSDE YouTube channel](#).

An illustration of a classroom door on the left, slightly ajar, revealing a glimpse of a classroom with a desk, chair, and a small blue ring floating in the air. The door is set against a dark blue background filled with white stars and a few larger, brighter stars, suggesting a cosmic or 'universe' theme.

A UNIVERSE OF OPPORTUNITIES

EdSight Secure Enhancements



Student Summary Course History Page

- The **Course History page** has been added and includes a listing of all prior year courses for students currently enrolled in grades 7-12 that were reported to the CSDE by all public schools that the student attended within the State of Connecticut.
- Course data include the NCES Course name, course grade earned, credits earned, course dates, and the school where the course was taken.

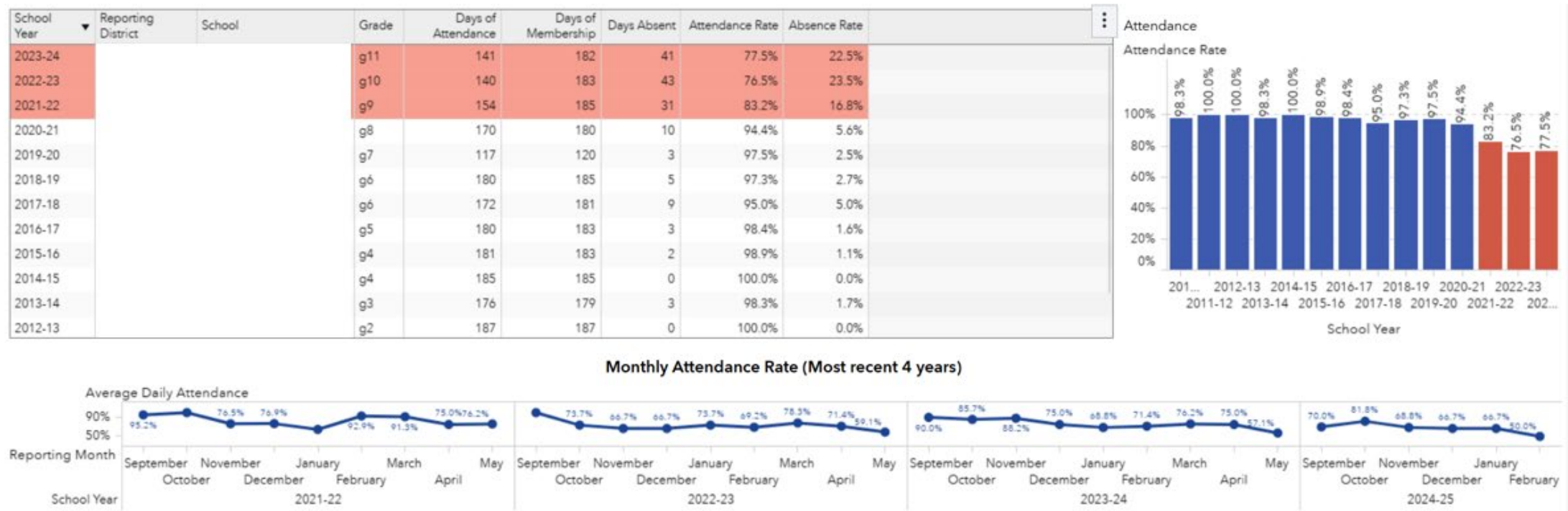
Fall Of Year ▼	Course Name ▲	NCES Course Code	Grade	Grade Status Code	Credits Earned	Available Credit	Session Start Date	Session End Date
2023	Biology	03051G1.0011	B-	P	1.00	1.00	04/01/2024	06/21/2024
2023	Engineering and Technology - Other	21999G0.5011	B+	P	0.50	0.50	10/30/2023	01/28/2024
2023	English/Language Arts III (11th grade)	01003G1.0011	C+	P	1.00	1.00	04/01/2024	06/21/2024
2023	Geometry	02072G1.0011	C-	P	1.00	1.00	04/01/2024	06/21/2024



Student Summary

Attendance History Page

- The **Attendance History page** now includes the monthly attendance pattern for the student for the four most recent years including the current year.





Student Summary Assessment History Page

- The **Assessment History page** now indicates whether students currently enrolled in grades 8 to 10 have demonstrated the potential to succeed in rigorous courses in high school.

Smarter Balanced Achievement

School Year ▼	Subject ▲	Grade	Performance Level Description	Vertical Scale Score
2022-23	ELA	08	Met (Level 3)	2587
2022-23	Math	08	Exceeded (Level 4)	2696
2021-22	ELA	07	Met (Level 3)	2599

Smarter Balanced Growth

School Year ▼	Subject ▲	Grade	Growth Achieved	Growth Rate	Percent of Target Achieved	Category Year 1	Category Year 2
2022-23	ELA	08	0	0	0.0%	5 (Level 3: Low)	5 (Level 3: Low)
2022-23	Math	08	0	1	100.0%	8 (Level 4: High)	8 (Level 4: High)
2021-22	ELA	07	0	0	0.0%	6 (Level 3: High)	5 (Level 3: Low)

Next Generation Science Standards (NGSS) Assessment

School Year ▼	Grade	Performance Level Description	Vertical Scale Score
2022-23	08	Met (Level 3)	821

Connecticut Alternate Assessment (CTAA)

School Year ▼	Subject ▲	Grade	Performance Level Description

Rigorous Coursework Potential

Met NGSS Criteria	Met SB ELA Criteria	Met SB Math Criteria ▲
No	Yes	Yes

Values will appear in the table above for students currently enrolled in grade 8, 9, or 10 who have demonstrated potential for taking rigorous coursework in high school. See the [Students Receiving Rigorous Coursework Letters report](#) for more information.



Early Indication Tool (EIT)

OVERVIEW

The EIT is a K-12 system that uses statistical methods to identify clusters of students who are at-risk of missing milestones and/or dropping out, and ***ultimately facilitates more timely interventions by assigning targeted student support levels.***

INFORMATION & ACCESS

The EIT provides **color-coded longitudinal data** and **visualizations** to school and district users in a secure fashion via EdSight Secure.

THE DASHBOARD

Early Indication Tool

School/Program Current Grade Support Level Gender Race/Ethnicity High Needs Special Education English Learner

Filter = Special Education Status = 'Special Education'; Current Grade = '06'; Support Level = 'High'

SASID Search
Enter SASID...

Attendance (Last yr) Perf. Level ELA (Last yr) Perf. Level Math (Last yr) Total School Moves Total ISS (2 yrs) Total OSS (2 yrs)

Current Grade	Special Education Status	English Learner Status	Race/Ethnicity	Gender	High Needs Status	Support Level	Attendance Rate (Last yr)	Attendance Rate (2yrs ago)	SB ELA Score (Last yr)	Perf. Level ELA (Last yr)	SB Math Score (Last yr)	Perf. Level Math (Last yr)	SB ELA Score (2 yrs ago)	SB Math Score (2 yrs ago)	Total School Moves	Total ISS (2 yrs)	Total OSS (2 yrs)
06	Special Education	Non-English Learner	Hispanic/Latino of any race	Male	High Needs	High	88.5%	90.1%	2340	1	2429	1	2359	2456	0	0	0
06	Special Education	Non-English Learner	Asian	Male	High Needs	High	88.5%	98.3%	2430	1	2471	2	2355	2412	0	0	0
06	Special Education	Non-English Learner	Hispanic/Latino of any race	Male	High Needs	High	89.0%	90.7%	2534	3	2505	2	2382	2442	0	0	0
06	Special Education	Non-English Learner	Two or More Races	Female	High Needs	High	89.6%	94.5%	2475	2	2470	2	2499	2437	0	0	0
Average:							94.1%	95.0%	2398	1	2413	1	2366	2393	Maximum: 2	Maximum: 7	Maximum: 4

Demographics and special populations status fields

Two years of attendance, achievement, mobility, discipline, and retention

Options to maximize, save, and export

Summary data by column

One row per student (*)

Filters

* Additional fields, including student ID, name, and date of birth, are displayed in the EIT

Targeted Student Support Level
(as determined by the EIT model)

Please email questions and comments to the EdSight Help Desk at EdSight.SDE@ct.gov



Early Indication Tool (EIT)

Now Updated Weekly

- The **Early Indication Tool (EIT)** is now updated every Friday to include students who were not enrolled at the time EIT was last run.
- Support level designations do not change as part of this weekly update, but all available data will be populated for all students.
- TCS tie-in: For students in grades 8 to 12, the longitudinal view includes a list of any core courses failed.
- Users can double-click a student record to access the Student Summary for additional information.



FAFSA Completion Report

Updated Nightly

- The CSDE receives FAFSA completion status for high school seniors from the Connecticut Office of Higher Education (OHE).
- The [public FAFSA completion report](#) is updated weekly and the student-level FAFSA Completion Status is updated nightly in EdSight Secure.
- Please see [FAFSA Completion Resources](#) for additional information to support students and families completing the FAFSA.



College Enrollment and Graduation *New Report*

- CSDE tracks college enrollment, persistence, and graduation via data from National Student Clearinghouse.
- These data are shared with districts, without suppression, in the **new College Enrollment and Graduation Report** for the students who graduated from your district.
- Users can view data for individual students on the Student-level Data Table page.
- These data are similar to those presented in the public [College Enrollment, Persistence, and Graduation Dashboard](#).



Attendance Reports

- The **Yearly Attendance Report** shows attendance data collected during June PSIS.
- The **Monthly Attendance Report** shows data collected during the monthly attendance collections.
- These dashboards mirror the graphs available on the [Attendance report on EdSight public](#).



Seal of Biliteracy Report Updated *New Graduate Report Available*

- Starting in 2021-22, the CSDE began collecting student-level results for the students who took assessments in Grades 10, 11, or 12 in a language other than English to demonstrate their proficiency in those languages.
- The data for 2023-24 have been processed and are now visible in the Seal of Biliteracy report.
- In addition, a new graduate report is available which shows Seal of Biliteracy eligibility for graduates from Connecticut public schools.
- Authorized users in EdSight Secure can view the counts and percentages of Seal-Eligible Graduates starting with the graduation class of 2024.

An illustration of a classroom door on the left, slightly ajar, revealing a glimpse of a classroom with a desk, a red chair, and a blue planet floating in the air. The door is set against a dark blue background filled with white stars and a few larger, brighter stars, suggesting a vast universe.

A UNIVERSE OF OPPORTUNITIES

**Next Generation Accountability
TCS Reports Available in Secure**



Next Generation Accountability

Three Next Generation Indicators relate to TCS:

- Indicator 5: Postsecondary Preparation
 - also known as: College and Career Readiness Course Taking
- Indicator 7: On-Track to High School Graduation
- Indicator 12: Arts Access

EdSight Secure uses three reports to help schools/districts understand these indicators.



Indicator 5: Postsecondary Preparation

Percentage of students in grades 11 and 12 participating in at least one of the following during high school:

- Two courses in AP/IB/dual credit; or
- Two CTE courses in one of 17 career clusters; or
- Two workplace experience “courses” in any area.

Note: CT uses a [modified list of CTE courses](#). Be sure you are checking the CT spreadsheet and not the one from NCES/SCED.



Indicator 5: Postsecondary Preparation

Quick reminders on Indicator 5:

- A student must take two courses of the same type. For CTE courses, they must be taken in the same cluster.
- Courses may count toward multiple course types and/or clusters.
- Courses from grades 9-12 are included.
- Be sure AP and IB courses are coded using the correct codes.
- Two courses taken in the same school year with the same SCED code will count as only one course.



Indicator 7: On-Track to High School Graduation

Percentage of 9th graders earning at least six full-year credits in the year.

New this year: Streamlined approach to summing credits for students.

- Allows credit counts to match between TCS and Next Gen.
- Two new checks in TCS:
 - Students earning over 12 credits will be flagged.
 - Courses with both year-long and semester records will be flagged.



Indicator 7: On-Track to High School Graduation

Which students are included in Indicator 7?

- On-track status is applied to the school/district the student attended in 9th grade as well as the school/district the student attended for 8th grade **the prior year**.
- For schools/districts that have both 8th and 9th grade, those students will count twice toward Indicator 7.
- For more detailed examples:
 - Get a [graphical explanation of Indicator 7](#) on the TCS Help Site.
 - Get a graphical example in the [Indicator 7 Preview Notes](#).
 - View the [Behind the Numbers webinar](#) on TCS (beginning at 11:25).



Indicator 12: Arts Access

Percentage of students in grades 9 through 12 participating in at least one dance, theater, music, visual arts, or media arts course in the school year

To be considered an arts course, the SCED subject code (the first two digits of the SCED code) must be **05**. For example:

- Web Design (**05**254) = Arts Course
- Web Page Design (**10**201) = **Not** an Arts Course



Next Gen TCS Reports in Secure

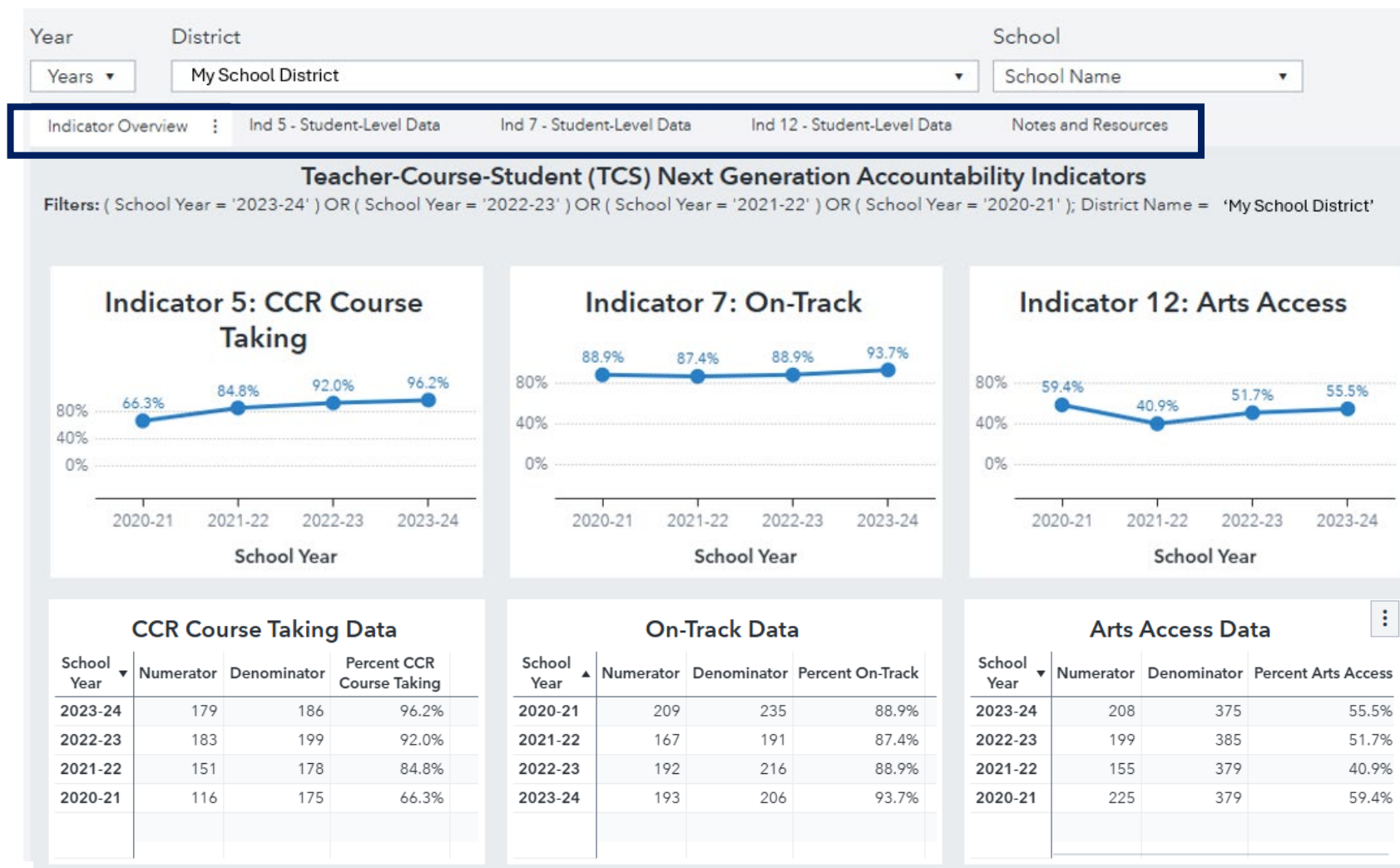
- Teacher Course Student (TCS) Accountability Indicators Report
- Indicator 7 – On-track to High School Graduation
 - Available all year in the “Instruction” section
 - Updated after TCS is frozen
 - Use to check prior accountability years
- TCS Accountability Indicators **Preview**
 - Only available in early September
 - Updated every few days before TCS is frozen
 - Use to check the accuracy of the current TCS load

Instruction
Teacher Course Student (TCS) Accountability Indicators Report (New! 10/10/24)
Indicator 7 - On-track to High School Graduation (Updated 10/10/24)
Resource Allocation Review (RAR)
Students Receiving Rigorous Coursework Letters (Updated 12/20/24)



TCS Accountability Indicators Report

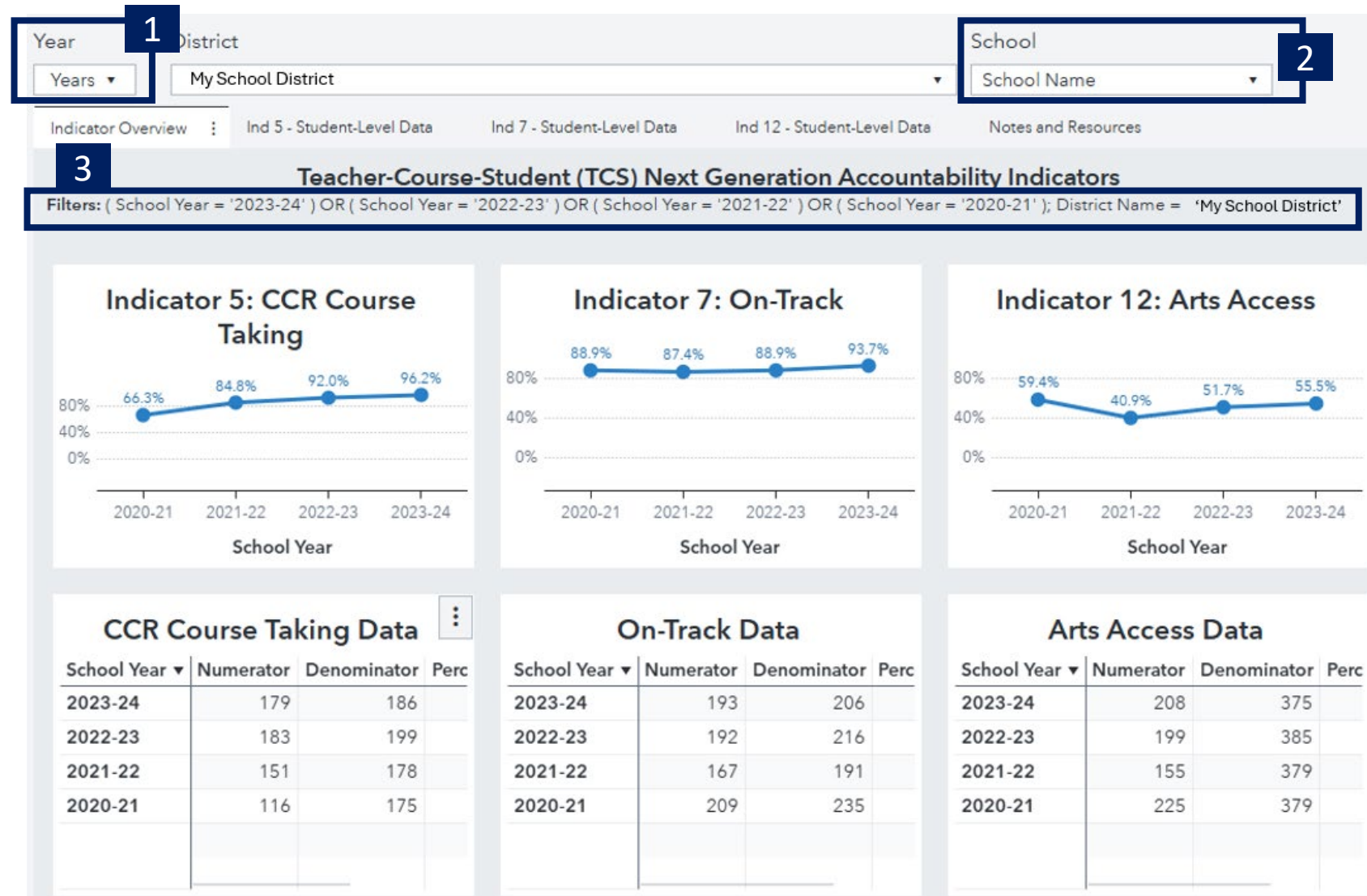
- Use the TCS Accountability Indicators Report to view trends and see student-level data for each indicator.
- Use the tabs to select either the Indicator Overview or the Student-Level Data for one of the indicators.





TCS Accountability Indicators Report

1. Use the Year filter to select the school year(s) you want to view.
2. Use the school filter to select the school you want to view (district users only). Leave blank to see the district view.
3. View your selected filters in the center of the page.

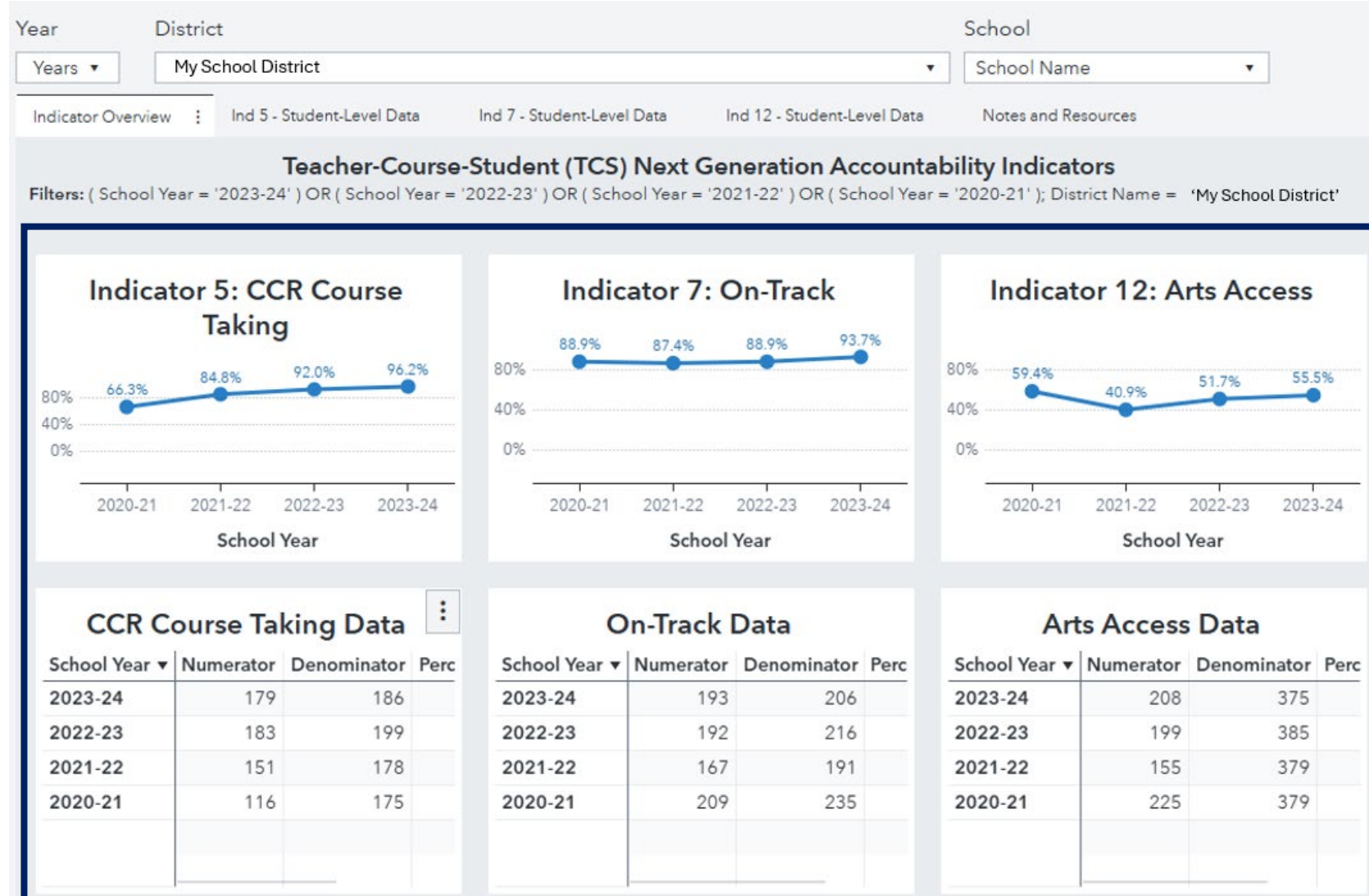




TCS Accountability Indicators Report

Indicator Overview:

Use this tab to view school/district trends on each indicator across time.





TCS Accountability Indicators Report



Indicator 5 – Student-Level Data Tab

1 = Met criteria
0 = Did not meet criteria

Filter by whether or not students met the criteria for Indicator 5 and by which category.

Select a specific student by Last Name or SASID.

Indicator Overview									
Ind 5 - Student-Level Data									
Ind 7 - Student-Level Data									
Ind 12 - Student-Level Data									
Notes and Resources									
Indicator 5: CCR Course Taking									
Filters: School Year = '2023-24'; District Name = 'My School District'									
Enter Last Name...					Enter SASID...				
Ind 5 Met/Not Met		AP/IB/Dual Enrollment M...		CTE Met/Not Met		Workplace Experience M...			
School Year	School Name	SASID	First Name	Last Name	Indicator 5 - Met Criteria	AP/IB/Dual Enrollment - Met Criteria	CTE - Met Criteria	Workplace Experience - Met Criteria	
					Sum: 179	Sum: 101	Sum: 168	Sum: 4	
2023-24					1	1	1	0	
2023-24					1	1	1	0	
2023-24					1	0	1	0	
2023-24					1	1	1	0	
2023-24					1	1	1	0	
2023-24					1	0	1	0	
2023-24					1	1	1	0	



TCS Accountability Indicators Report



Indicator 7 – Student-Level Data Tab

- 2 = Student attended your school/ district for both 8th and 9th grade
- 1 = Student attended your school/ district for 9th grade only

Students who attended your school/ district for 8th grade only will not appear in the data table.

Filter by On-Track status, Last Name, or SASID.

Indicator OverviewInd 5 - Student-Level DataInd 7 - Student-Level DataInd 12 - Student-Level DataNotes and Resources

Indicator 7: On-Track

Filters: School Year = '2023-24'; District Name = 'My School District'

The student-level data below show the on-track status for all students who attended your school/district in 9th grade.

- Students who attended your school/district for both 8th and 9th grade will appear with a count of 2.
- Students who attended your school/district for only 9th grade will appear with a count of 1.
- Students who attended your school/district for only 8th grade are not included in the student-level data below; however, are included in the calculation for this indicator.

IMPORTANT NOTE: You cannot match the calculation for Indicator 7 using the data in the below table.

Student-Level Data*

* Students who were enrolled in the school/district for 8th grade only are not included in this table.

On-Track StatusEnter Last Name...Enter SASID...

School Year ▲			2023-24		On-Track Status ▼
			On-Track	Not On-Track	
SASID ▲	First Name ▲	Last Name ▲			
			2	—	
			1	—	
			2	—	
			—	2	
			2	—	
			2	—	
			2	—	



TCS Accountability Indicators Report

Indicator 12 – Student-Level Data Tab

Filter on Grade Level, Last Name, SASID, and whether or not the student met the criteria for Indicator 12.

Indicator OverviewInd 5 - Student-Level DataInd 7 - Student-Level DataInd 12 - Student-Level DataNotes and Resources

Indicator 12: Arts Access

Filters: School Year = '2023-24'; District Name = 'My School District'

Grade LevelMet CriteriaEnter Last Name...Enter SASID...

Student-Level Data

School Year	School Name	SASID	First Name	Last Name	Grade Level	Met Criteria
2023-24					Grade 11	Y
2023-24					Grade 12	Y
2023-24					Grade 12	N
2023-24					Grade 10	Y
2023-24					Grade 9	N
2023-24					Grade 11	N
2023-24					Grade 9	Y



Indicator 7 Report

Example:

Double-click for a list of students included in the cell.*

On-Track Status ▼	Not On-Track			Subtotal: Not On-Track	On-Track			Subtotal: On-Track	Total
8th or 9th ▲	Both Gr 8 and 9	Gr 8 Only	Gr 9 Only		Both Gr 8 and 9	Gr 8 Only	Gr 9 Only		
Year and Grade ▲	Frequency	Frequency	Frequency	Frequency	Frequency	Frequency	Frequency	Frequency	Frequency
2022-23: 8th Graders	57	6	—	63	444	55	—	499	562
2023-24: 9th Graders	57	—	41	98	444	—	74	518	616
Total	114	6	41	161	888	55	74	1,017	1,178

First Row: Students in your school/district for 8th grade during the previous school year (2022-23) and were in any CT school/district for 9th grade during the current school year (2023-24).

Second Row: Students in your school/district for 9th grade during the current school year (2023-24).

Students who were in your district for both 8th grade during the previous year and 9th grade during the current year appear in both rows. These students count twice in the totals.



Indicator 7 Report

Example:

Double-click for a list of students included in the cell*.

On-Track Status ▼	Not On-Track				On-Track				
8th or 9th ▲	Both Gr 8 and 9	Gr 8 Only	Gr 9 Only	Subtotal: Not On-Track	Both Gr 8 and 9	Gr 8 Only	Gr 9 Only	Subtotal: On-Track	Total
Year and Grade ▲	Frequency	Frequency	Frequency	Frequency	Frequency	Frequency	Frequency	Frequency	Frequency
2022-23: 8th Graders	57	6	—	63	444	55	—	499	562
2023-24: 9th Graders	57	—	41	98	444	—	74	518	616
Total	114	6	41	161	888	55	74	1,017	1,178

First Group: Students who did not earn at least 6 credits (**not on-track**) in 9th grade during the current year. These students are counted in the **denominator, but not the numerator**.

Second Group: Students who did earn at least 6 credits (**on-track**) in 9th grade during the current year. These students are counted in **both the numerator and denominator**.

The On-Track Percentage is calculated by dividing the On-Track Subtotal by the Total.



Indicator 7 Report

Example:

Double-click for a list of students included in the cell*.

On-Track Status ▼	Not On-Track			Subtotal: Not On-Track	On-Track			Subtotal: On-Track	Total
8th or 9th ▲	Both Gr 8 and 9	Gr 8 Only	Gr 9 Only		Both Gr 8 and 9	Gr 8 Only	Gr 9 Only		
Year and Grade ▲	Frequency	Frequency	Frequency	Frequency	Frequency	Frequency	Frequency	Frequency	Frequency
2022-23: 8th Graders	57	6	—	63	444	55	—	499	562
2023-24: 9th Graders	57	—	41	98	444	—	74	518	616
Total	114	6	41	161	888	55	74	1,017	1,178

Double click any cell in this table to open a student-level table of the students included in that cell.

Note: Students that were in your school/district for **Grade 8 during the prior school year only** (i.e., they were not in your school district for Grade 9 during the current school year) **will not appear in the student-level tables** due to FERPA regulations.



Preview Report

School Year Comparison (top of each tab)

- Chart compares current results to the previous year.
- If the difference is $>10\%$ (in either direction), the cell will turn red.

Other components in the preview report resemble those from the Accountability Indicator and Indicator 7 reports.

Fall of Year ▲	Numerator	Denominator	Percent On-Track	Difference	
2022	17	25	68.0%	.	
2023	28	31	90.3%	22.3%	



Preview Report

Indicator 5:

Percent CCR Course Taking

92.3%

School Year Comparison

School Year	Percent CCR Course Taking	Numerator	Denominator
2021-22	100.0%	127	127
2022-23	92.3%	120	130

Student-Level Data

Enter Last Name...					Enter SASID...			
School Year	School Name	SASID	First Name	Last Name	Indicator 5 - Met Criteria	AP/IB/Dual Enrollment - Met Criteria	CTE - Met Criteria	Workplace Experience - Met Criteria
					Sum: 7	Sum: 4	Sum: 4	Sum: 2
2022-23	School A	1111111111	ALICE	ANDERSON	1	0	1	1
2022-23	School A	2222222222	BEAU	BROWN	0	0	0	0
2022-23	School A	3333333333	CAREY	COLEMAN	1	1	1	0
2022-23	School A	4444444444	DEBORA	DELGADO	1	1	0	0
2022-23	School A	5555555555	EMMA	ESPINOZA	1	0	1	0
2022-23	School A	6666666666	FINN	FREEMAN	1	1	0	0
2022-23	School A	7777777777	GRACE	GREEN	1	0	0	1
2022-23	School A	8888888888	HALEY	HILL	1	1	1	0



Preview Report



Indicator 7:

Ind 5 - CCR Course Taking

Ind 7 - On Track :

Ind 12 - Arts Access

Resources

Percent On-Track

64.3%

School Year: 2022-23

Note: All data included in this report are preliminary and may not match final next generation accountability results.

On-Track School Year Comparison

Fall of Year ▲	Numerator	Denominator	Percent On-Track	Difference
2021	8	17	47.1%	
2022	9	14	64.3%	17.2%

See our [Indicator 7 report guide](#) for information and examples.

Click a cell in this cross-tab to filter the student-level data table*.

On-Track Status ▾	Total	Subtotal: On-Track	On-Track			Subtotal: Not On-Track	Not On-Track		
8th or 9th ▲			Both Gr 8 and 9	Gr 8 Only*	Gr 9 Only		Both Gr 8 and 9	Gr 8 Only*	Gr 9 Only
Year and Grade ▲									
Total	14	9	6	1	2	5	2	1	2
2021-22: 8th Graders	6	4	3	1	—	2	1	1	—
2022-23: 9th Graders	8	5	3	—	2	3	1	—	2

* Students who were enrolled in the school/district for 8th grade only will not be included in the student-level data.

Student-Level Data*

On-Track Status Year and Grade Enter Last Name... Enter SASID...

On-Track Status ▼			On-Track		Not On-Track		
Year and Grade ▲			2021-22: 8th Graders	2022-23: 9th Graders	2021-22: 8th Graders	2022-23: 9th Graders	
SASID ▲	First Name ▲	Last Name ▲					
1111111111	ALICE	ANDERSON	1	1	-----	-----	1
2222222222	BEAU	BROWN	-----	-----	1	1	
3333333333	CAREY	COLEMAN	1	1	-----	-----	
4444444444	DEBORA	DELGADO	1	1	-----	-----	
5555555555	HALEY	HILL	-----	1	-----	-----	
6666666666	JESSICA	JAMESON	-----	1	-----	-----	
7777777777	KEVIN	KRAMER	-----	-----	-----	1	
8888888888	LARRY	LOPEZ	-----	-----	-----	1	



Preview Report

Indicator 12:

Ind 5 - CCR Course Taking

Ind 7 - On Track (Overview)

Ind 7 - On Track (Student)

Ind 12 - Arts Access

Resources

Percent Arts Access

41.3%

School Year	Percent Arts Access	Numerator	Denominator
2021-22	46.9%	45	96
2022-23	41.3%	38	92

School Year	School Name	SASID	First Name	Last Name	Grade Level	Met Criteria
2022-23	School A	1111111111	CAREY	COLEMAN	Grade 9	Y
2022-23	School A	2222222222	DEBORA	DELGADO	Grade 10	N
2022-23	School B	3333333333	EMMA	ESPINOZA	Grade 11	Y
2022-23	School B	4444444444	FINN	FREEMAN	Grade 12	N

An illustration of an open door on the left side of the slide. Through the door, a classroom is visible with a desk, a chair, and a small figure of a person. The door is set against a dark blue background filled with white stars, suggesting a cosmic or expansive theme.

A UNIVERSE OF OPPORTUNITIES

Additional Slides



Indicator 5: Postsecondary Preparation

To count toward Indicator 5, a student must take two courses within the same course type.

- AP course + IB course = YES
- AP course + Workplace Experience = NO

Many courses count toward more than one course type.

- AP Computer Science Principles (AP and CTE-Information Technology cluster)
- Business Law course taken for college credit (Dual Enrollment course, CTE-Business Management course, CTE-Law/Public Safety course)



Indicator 5: Postsecondary Preparation

Indicator 5 is a cumulative lookback across all courses taken in grades 9-12, however only 11th and 12th graders are included.

- For example, a student who takes two AP courses in 9th grade
 - Will not be counted toward (or against) Indicator 5 in either 9th or 10th grade
 - Will be counted toward Indicator 5 in both 11th and 12th grade, even if they didn't take any other AP/IB/DE classes after 9th grade.
- When a student repeats a grade, courses taken in both school years will count toward indicator 5.



Indicator 5: Postsecondary Preparation

AP, IB, CTE, and Workplace Experience are all **course-level properties**. Dual Enrollment is a **student-course record property**.

- A student-course record should only be indicated as dual enrollment if the student is registered to receive college credit.
- Ensure that the dual enrollment field is completed for all dual enrollment records.



Indicator 5: Postsecondary Preparation

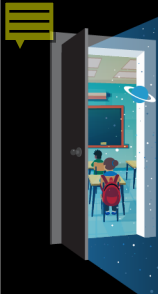
Be sure that you are using the correct course codes for AP or IB courses. For example, the courses below have very similar course titles and descriptions, but only 02203 will be counted as an AP course.

SCED Code	Course Title	Description
02203	AP Statistics	Following the College Board's suggested curriculum designed to parallel college-level statistics courses, AP Statistics courses introduce students to the major concepts and tools for collecting, analyzing, and drawing conclusions from data. Students are exposed to four broad conceptual themes: exploring data, sampling and experimentation, anticipating patterns, and statistical inference.
02205	Statistics	Statistics courses involve the major concepts and methods used to collect, analyze, and draw conclusions from data. Topics typically include populations and samples, measures of central tendency and variability, hypothesis testing, presentation, and making statistical inferences.

To count toward Indicator 5, both CTE courses must be taken in the same cluster. In the example below, Mechatronics + Refrigeration would not count toward Indicator 5, but Mechatronics + Marine Mechanics or Mechatronics + Industrial Art would (see quick links for CTE Course Mapping).

Course	Architecture/Construction	Manufacturing	Transportation
Mechatronics		YES	YES
Refrigeration	YES		
Marine Mechanics			YES
Industrial Art		YES	

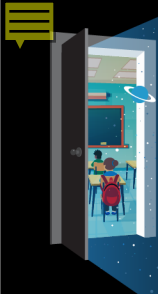
For the purpose of Indicator 5, two courses taken in the **same school year** with the **same SCED code** will count as only **one course**.



Indicator 7: Schools/Districts with Grade 9 (not Grade 8)

Denominator: Number of students enrolled in your school/district for **Grade 9 during the current accountability year**

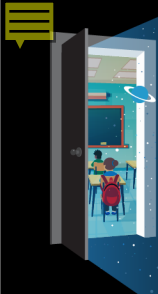
Numerator: Of the students in the denominator, those who earned at least 6 credits in Grade 9.



Indicator 7: Schools/Districts with Grade 8 (not Grade 9)

Denominator: Number of students enrolled in your school/district for **Grade 8 during the previous accountability year** who were also enrolled in any CT public school for Grade 9 during the current accountability year

Numerator: Of the students in the denominator, those who earned at least 6 credits **in Grade 9.**



Indicator 7: Schools/Districts with BOTH Grades 8 and 9

Denominator: Number of students enrolled in your school/district for **Grade 9 during the current accountability year PLUS** the number of students enrolled in your school/district for **Grade 8 during the previous accountability year** who were also enrolled in any CT public school for Grade 9 during the current accountability year.

Students who were enrolled in your school/district during **both 8th and 9th grade will count twice toward Indicator 7.**



Indicator 7: Example

	On-Track?	8 th Grade (2023-24)	9 th Grade (2024-25)
Student A	Yes	My District	My District
Student B	No	My District	My District
Student C	Yes	My District	Other District
Student D	No	My District	My District
Student E	Yes	My District	My District
Student F		My District	Out of State
Student G	Yes	Other District	My District
Student H	Yes	Other District	My District
Student I	No	Other District	My District
Denominator		5 – (A, B, C, D, E)	7 – (A, B, D, E, G, H, I)
Numerator		3 – (A, C, E)	4 – (A, E, G, H)

$$\text{District \% On-Track} = (3+4)/(5+7) = 7/12 = 58.3\%$$



Indicator 7: On-Track to High School Graduation

Students who Repeat Ninth Grade:

- Credits will only count toward Indicator 7 if they were earned in the current accountability school year.
- Since they were not in Grade 8 during the previous accountability year, they will not count towards either the school they attended for Grade 8 nor the school they attended for their initial Grade 9 year.