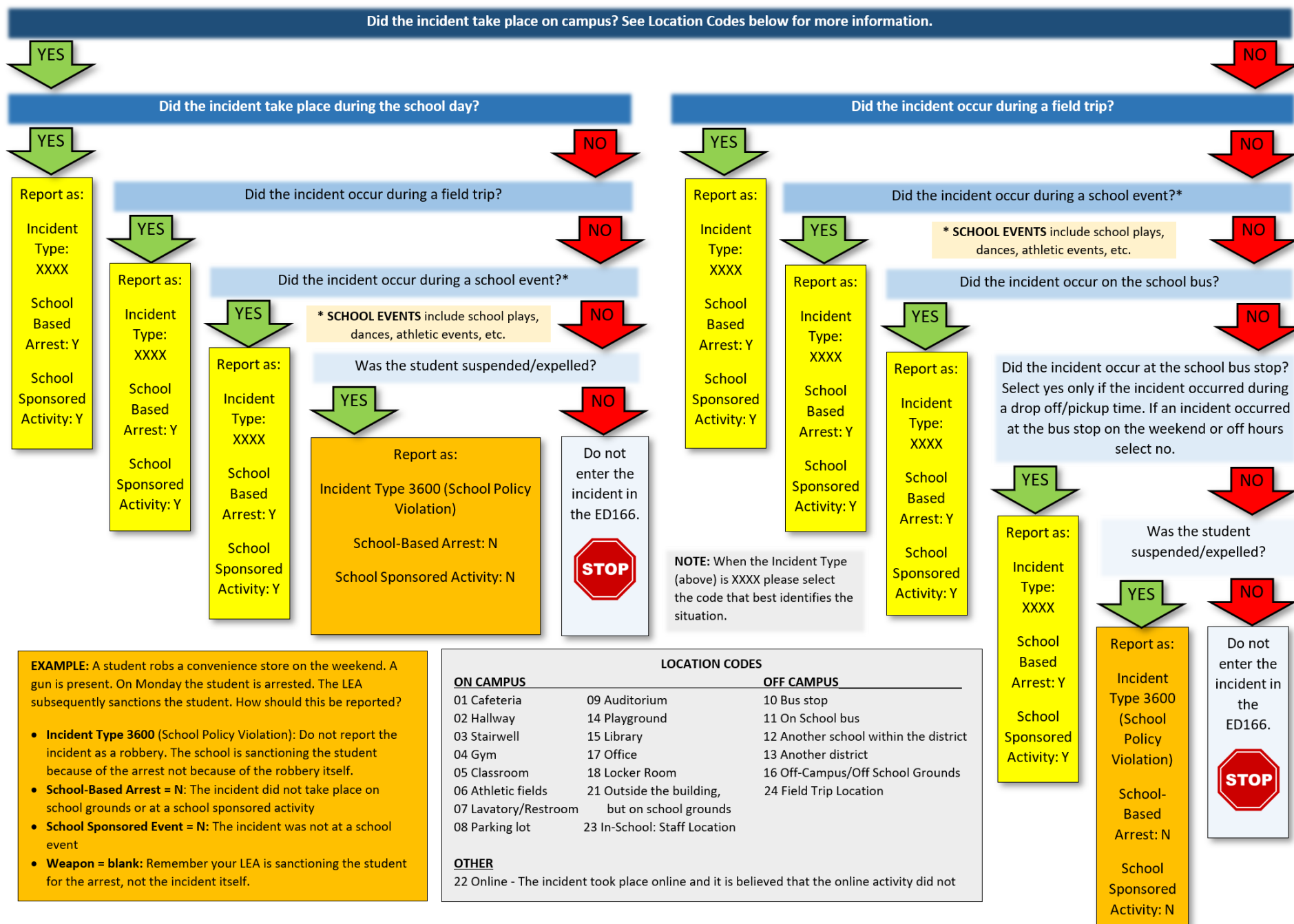


## School-Based Arrest Flow Chart

If a student is arrested use the flow chart below to determine ① if the arrest is school-based, and ② how to report the incident in the ED166.



## Description of Graphic

Did the incident take place on campus? See Location Codes below for more information.

Yes- Did the incident take place during the school day?

*Yes - Report as: Incident Type: XXXX<sup>1</sup>, School Based Arrest: Y, School Sponsored Activity: Y*

*No - Did the incident occur during a field trip?*

*Yes – Report as: Incident Type: XXXX, School Based Arrest: Y, School Sponsored Activity: Y*

*No – Did the incident occur during a school event?<sup>2</sup>*

*Yes – Report as: Incident Type: XXXX, School Based Arrest: Y, School Sponsored Activity: Y*

*No – Was the student suspended/expelled?*

*Yes – Report as: Incident Type 3600 (School Policy Violation), School-Based Arrest: N, School Sponsored Activity: N*

*No – Do not enter the incident in the ED166.*

No - Did the incident occur during a field trip?

*Yes - Report as: Incident Type: XXXX, School Based Arrest: Y, School Sponsored Activity: Y*

*No – Did the incident occur during a school event?*

*Yes – Report as: Incident Type: XXXX, School Based Arrest: Y, School Sponsored Activity: Y*

*No – Did the incident occur at the school bus stop? Select yes only if the incident occurred during a drop off/pickup time. If an incident occurred at the bus stop on the weekend or off hours select no.*

*Yes – Report as: Incident Type: XXXX, School Based Arrest: Y, School Sponsored Activity: Y*

*No – Was the student suspended/expelled?*

*Yes – Report as: Incident Type 3600 (School Policy Violation), School-Based Arrest: N, School Sponsored Activity: N*

*No – Do not enter the incident in the ED166.*

## Location Codes:

**On Campus** - 01 Cafeteria, 02 Hallway, 03 Stairwell, 04 Gym, 05 Classroom, 06 Athletic fields, 07 Lavatory/Restroom, 08 Parking lot, 09 Auditorium, 14 Playground, 15 Library, 17 Office, 18 Locker Room, 21 Outside the building, but on school grounds, 23 In-School: Staff Location

**Off Campus** - 10 Bus stop, 11 On School bus, 12 Another school within the district, 13 Another district, 16 Off-Campus/Off School Grounds, 24 Field Trip Location

**Other** - 22 Online - The incident took place online and it is believed that the online activity did not occur on school grounds

<sup>1</sup> XXXX = Incident Type Code – select the code that best identifies the situation

<sup>2</sup> School events include school plays, dances, athletic events, etc.