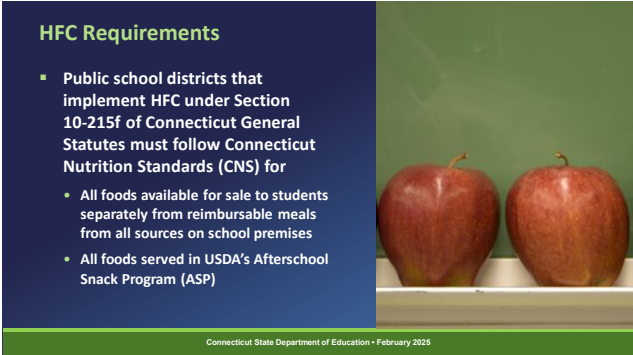
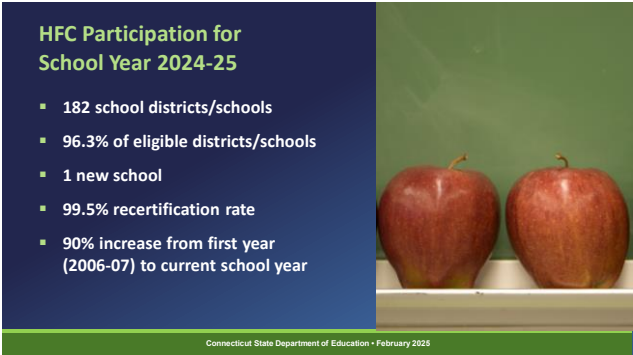


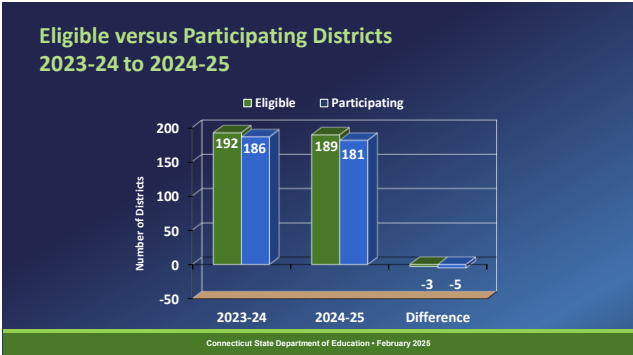
1



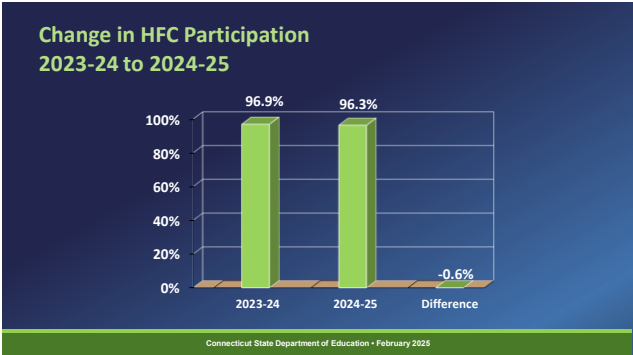
2



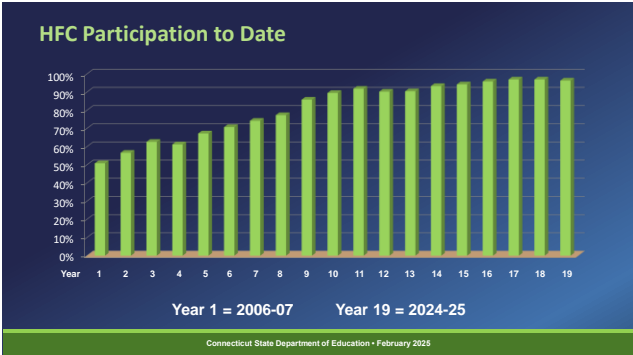
3



4




5



6

CSDE Resource

List of HFC Districts for School Year 2024-25



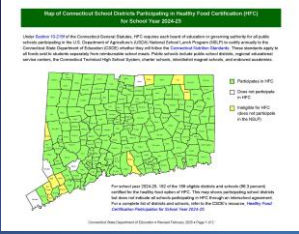
https://portal.ct.gov/-/media/sde/nutrition/hfc/data/hfc_schools.pdf

Connecticut State Department of Education • February 2025

7

CSDE Resource

Map of HFC Districts for School Year 2024-25



https://portal.ct.gov/-/media/sde/nutrition/hfc/data/hfc_map.pdf


Connecticut State Department of Education • February 2025

8

CSDE Resource

Healthy Food Certification Webpage

- HFC participation (list of schools and state HFC map)
- HFC application
- HFC documentation
- HFC forms
- HFC resources



<https://portal.ct.gov/sde/nutrition/healthy-food-certification>

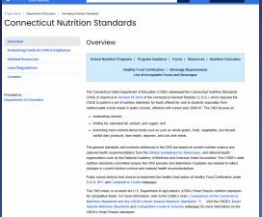
Connecticut State Department of Education • February 2025

9

CSDE Webpage

Connecticut Nutrition Standards Webpage

- CNS summary
- Full CNS document
- Guidance on how to evaluate foods for CNS compliance
- CNS worksheet



<https://portal.ct.gov/sde/nutrition/healthy-food-certification>

Connecticut State Department of Education • February 2025

10

CSDE Webpage

Beverage Requirements



<http://portal.ct.gov/sde/nutrition/beverage-requirements>

Connecticut State Department of Education • February 2025

11

CSDE Webpage

List of Acceptable Foods and Beverages




<https://portal.ct.gov/sde/nutrition/list-of-acceptable-foods-and-beverages>

Connecticut State Department of Education • February 2025

12

Questions?

- Contact the state HFC coordinator or CSDE's school nutrition programs staff



<https://portal.ct.gov/sde/nutrition/healthy-food-certification/contact>
<https://portal.ct.gov/sde/nutrition/contact-information-for-school-nutrition-programs>

Connecticut State Department of Education • February 2025

13

CSDE Nondiscrimination Statement

The Connecticut State Department of Education is committed to a policy of equal opportunity/affirmative action for all qualified persons. The Connecticut Department of Education does not discriminate in any employment practice, education program, or educational activity on the basis of race; color; religious creed; age; sex; pregnancy; sexual orientation; workplace hazards to reproductive systems; gender identity or expression; marital status; national origin; ancestry; retaliation for previously opposed discrimination or coercion; intellectual disability; genetic information; learning disability; physical disability (including, but not limited to, blindness); mental disability (past/present history thereof); military or veteran status; status as a victim of domestic violence; or criminal record in state employment, unless there is a bona fide occupational qualification excluding persons in any of the aforementioned protected classes. Inquiries regarding the Connecticut State Department of Education's nondiscrimination policies should be directed to: Attorney Louis Todisco, Connecticut State Department of Education, by mail 450 Columbus Boulevard, Hartford, CT 06103-1841; or by telephone 860-713-6594; or by email louis.todisco@ct.gov.

Connecticut State Department of Education • February 2025

14