



CONNECTICUT STATE DEPARTMENT OF EDUCATION

Connecticut SAT School Day & CMT/CAPT Science

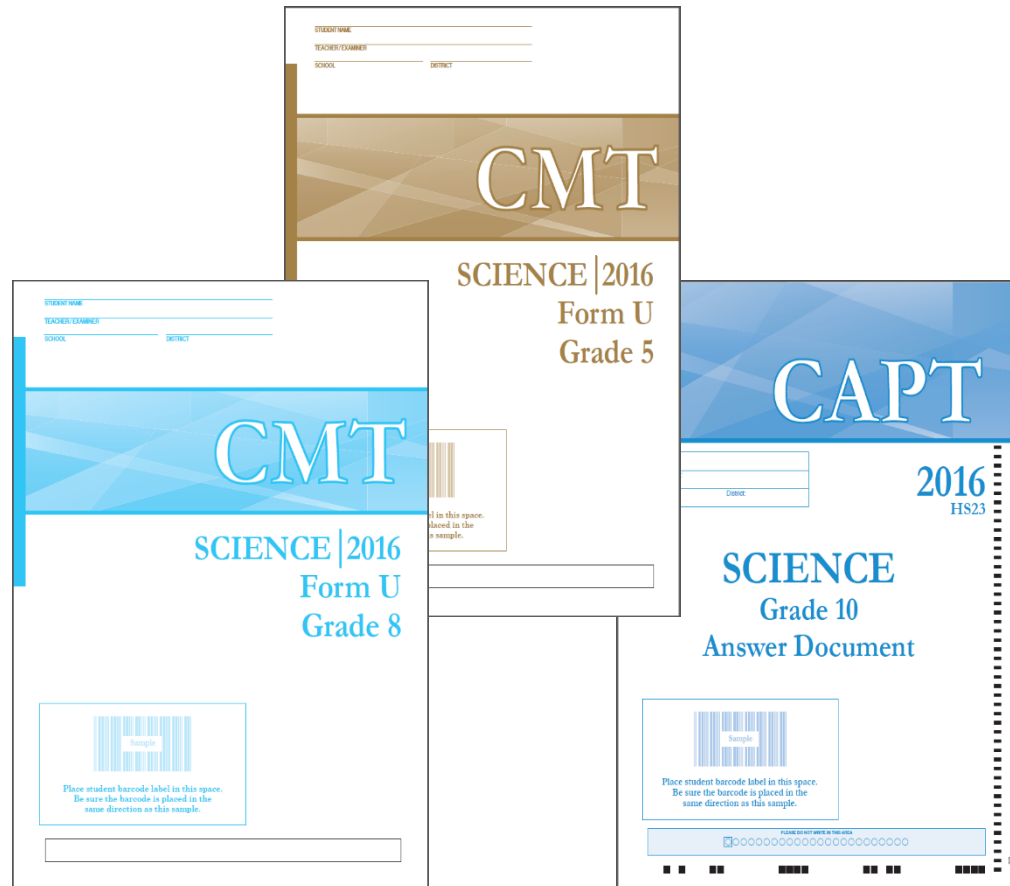
Accommodations Options for Special Populations

Mastery Examination Committee
June 8, 2016

CMT/CAPT Science

The majority of students take the test in a booklet.

- Test booklets
- Answer booklets
- Online test items




CMT/CAPT Science

MATH	ELA	ELPT	SC	PRESENTATION SUPPORTS/ACCOMMODATIONS ALL ▲ SPED/504 ■ EL ♦
	<input type="radio"/>	<input type="radio"/>		Embedded: Refreshable Braille (<input type="radio"/> Contracted ; <input type="radio"/> Non-contracted) ■
<input type="radio"/>	<input type="radio"/>	<input type="radio"/>		Embedded: Braille Embosser (<input type="radio"/> Contracted; <input type="radio"/> Non-contracted) ■
<input type="radio"/>	<input type="radio"/>	<input type="radio"/>	<input type="radio"/>	Embedded: American Sign Language (ASL) - Video *(ELA-Listening only) Non-Embedded: ^Sign Language for Test Items Including Directions by a Qualified Staff ■
	<input type="radio"/>			Embedded: Text-to-Speech for ELA Reading Passages- (Grades 3-8) ■
<input type="radio"/>	<input type="radio"/>	<input type="radio"/>	<input type="radio"/>	Embedded: Text-to-Speech (*Does NOT include ELA Reading Passages)▲ ^Science ■ ♦
<input type="radio"/>	<input type="radio"/>	<input type="radio"/>	<input type="radio"/>	Embedded: Print Size Online- <input type="radio"/> 21 point (Level 1); <input type="radio"/> 24.5 point (Level 2); <input type="radio"/> 35 point (Level 3); <input type="radio"/> 42 point (Level 4) ▲ ^Science ■ ♦
<input type="radio"/>	<input type="radio"/>	<input type="radio"/>	<input type="radio"/>	Embedded: Streamline ■ ^Science ■ ♦
	<input type="radio"/>			Embedded: Closed Captioning - *(ELA-Listening only) ■
<input type="radio"/>	<input type="radio"/>	<input type="radio"/>	<input type="radio"/>	Embedded: Color Contrast -(<input type="radio"/> Black on White <input type="radio"/> Yellow on Blue <input type="radio"/> Medium Gray on Light Gray <input type="radio"/> Reverse Contrast <input type="radio"/> Black on Rose) ▲ ^Science ■ ♦
<input type="radio"/>	<input type="radio"/>	<input type="radio"/>	<input type="radio"/>	Embedded: Permissive Mode- Permits accessibility software such as screen readers or magnifiers. ■ ^Science ■ ♦
<input type="radio"/>	<input type="radio"/>	<input type="radio"/>	<input type="radio"/>	Embedded: Masking ▲ ^Science ■ ♦
<input type="radio"/>	<input type="radio"/>	<input type="radio"/>	<input type="radio"/>	Non-Embedded: Braille Booklet (<input type="radio"/> Contracted; <input type="radio"/> Non-contracted) ■
<input type="radio"/>	<input type="radio"/>	<input type="radio"/>	<input type="radio"/>	Non-Embedded: Large Print Booklet ■
<input type="radio"/>	<input type="radio"/>	<input type="radio"/>	<input type="radio"/>	Non-Embedded: Read-Aloud by a qualified person : *NOT ELA Reading Passages ▲ ^Science ■ ♦
	<input type="radio"/>			Non-Embedded: Read-Aloud by a qualified person : ELA Reading Passages- Grades 3-8 ■
<input type="radio"/>	<input type="radio"/>	<input type="radio"/>		Non-Embedded: Color Contrast ▲
<input type="radio"/>	<input type="radio"/>	<input type="radio"/>	<input type="radio"/>	Non-Embedded: Color Overlay ▲
<input type="radio"/>	<input type="radio"/>	<input type="radio"/>	<input type="radio"/>	Non-Embedded: Noise Buffering ▲
<input type="radio"/>	<input type="radio"/>	<input type="radio"/>	<input type="radio"/>	Non-Embedded: Magnification Device ▲
MATH	ELA	ELPT	SC	RESPONSE ACCOMMODATIONS SPED/504 ■
			<input type="radio"/>	Embedded: Test Mode: Computer Response ■ ^Science ■ ♦ (This requires separate entry in TIDE)
			<input type="radio"/>	Non-Embedded: Circle Answers in Test Booklet (Multiple Choice Items Only) ■
			<input type="radio"/>	Non-Embedded: Bubbler-Test Booklet Only ■
<input type="radio"/>	<input type="radio"/>	<input type="radio"/>	<input type="radio"/>	Non-Embedded: Speech-to-Text (Voice Recognition Software) Permissive mode required ■
<input type="radio"/>	<input type="radio"/>	<input type="radio"/>	<input type="radio"/>	Non-Embedded: Alternate Response Options (Includes adapted keyboard/mouse, touchscreen, headwand , etc.) Permissive mode required ■ ^Science ■ ♦
MATH	ELA	ELPT	SC	OTHER SUPPORTS/ACCOMMODATIONS ALL ▲ SPED/504 ■ EL ♦
<input type="radio"/>				Non-Embedded: Specialized Calculator (Non-Embedded - Only for grade 6-8) ■
<input type="radio"/>				Non-Embedded: Abacus - used in place of scratch paper ■
<input type="radio"/>				Non-Embedded: Multiplication Table - (Non-Embedded - Only for grade 4-8) ■
			<input type="radio"/>	Non-Embedded: Time Extension ■ ♦
<input type="radio"/>	<input type="radio"/>	<input type="radio"/>	<input type="radio"/>	Non-Embedded: Separate Setting ▲
MATH	ELA	ELPT	SC	DESIGNATED SUPPORTS EL ♦
<input type="radio"/>				Embedded: Translation Glossary (Includes Audio): <input type="radio"/> Arabic; <input type="radio"/> Cantonese; <input type="radio"/> Filipino (Tagalog & Ilokano); <input type="radio"/> Korean; <input type="radio"/> Mandarin; <input type="radio"/> Punjabi; <input type="radio"/> Russian; <input type="radio"/> Spanish; <input type="radio"/> Ukrainian; <input type="radio"/> Vietnamese; Include <input type="radio"/> English ♦
<input type="radio"/>				Embedded: Translation (Stacked - Spanish Only) ♦
			<input type="radio"/>	Non-Embedded: Native Language Reader Directions Only (Certified Staff or Non Certified Staff) ♦
		<input type="radio"/>	<input type="radio"/>	Non-Embedded: Bilingual Dictionary - Word-to-Word ^*(ELA-performance task full write) ♦

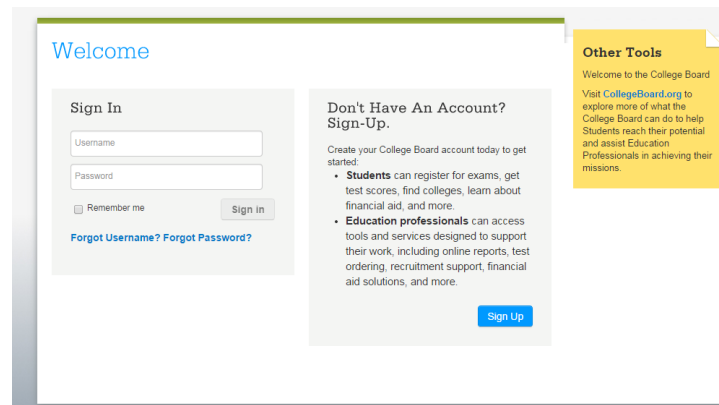


Connecticut SAT School Day Accommodations Options

Option 1:  **CollegeBoard**
**College Reportable
Accommodations**

Option 2: 
**CT State-Allowed
Accommodations (SAA)**

Both options requires entry on the same website



The screenshot shows the CollegeBoard website interface. On the left, there is a 'Sign In' section with fields for 'Username' and 'Password', a 'Remember me' checkbox, and a 'Sign In' button. Below these fields are links for 'Forgot Username?' and 'Forgot Password?'. In the center, there is a 'Don't Have An Account? Sign-Up.' section with a 'Sign Up' button. On the right, there is an 'Other Tools' section with a yellow background, containing text about the College Board's resources and a link to 'CollegeBoard.org'.



Who is Eligible for Accommodations?



SECTION 504



Roles and Responsibilities at Participating Schools

- **SSD Coordinator** is responsible for:
 - Being the school's liaison with the College Board's Services and CSDE for Students with Disabilities.
 - Submitting accommodation requests for all students who request them at his/her school.
 - Coordinating efforts to test students who have a non-standard administration of the test and appear on the Non-standard Administration Roster (NAR).

SSD Online Website

[Current SAT](#)[New SAT](#)[PSAT/NMSQT](#)[AP](#)[College Search](#)[Professional Development](#)[More ▾](#)**SSD**[Who Is Eligible?](#)[Submitting a Request](#)[Providing Documentation](#)[After Approval](#)[Administering Exams](#)[Calendar](#)[Forms](#)**SSD Online**[Getting Access to SSD Online](#)[Submitting Requests Online](#)[Managing Accommodations Online](#)[Tips & FAQs](#)

SSD Online

The College Board's SSD Online is the fastest and most accurate way to request and manage accommodations for students with disabilities.

Already Have an SSD Online Account?

[Sign in to SSD Online](#) to access your account.

Get Access to SSD Online

To submit and manage requests for accommodations, schools designate one or more SSD Coordinators. [Educators: Find out how to request access.](#)

How to Use SSD Online

Get step-by-step instructions on:

- [Submitting Requests Online](#)
- [Managing Accommodations Online](#) (Covers checking request status, changing accommodations, submitting additional information, and more)

Parents and Students

Benefit from SSD Online by working with your school to request accommodations. [Get an overview of the request process.](#)

Contact Us

Email

Phone: 212-713-8333

Fax: 866-360-0114

TTY: 609-882-4118

College Board SSD Program

P.O. Box 7504

London, KY

40742-7504

Important Dates

November SAT and SAT Subject Tests

SSD request deadline:

Sept. 18, 2015

December SAT and SAT Subject Tests

SSD request deadline:

Oct. 16, 2015

January SAT and SAT Subject Tests

SSD request deadline:

Dec. 4, 2015

[View SSD Calendar for more details >](#)

Connecticut SAT Accommodations

	College Reportable Accommodations	Connecticut State-Allowed Accommodations for State Accountability
Students with Disabilities	Used for accountability and college admission	Used for accountability purposes only
	<ul style="list-style-type: none"> • Braille Booklets • Text-to-Speech for all test content (CB MP3 audio) • Large Print Booklet • Color Overlay • Noise Buffering • Magnification Device • Computer Response • Scribe • Speech-to-Text (CB Assistive Technology) • Specialized Calculator • Abacus • Multiplication table • Time Extension • Separate Setting • American Sign Language (ASL)- test directions only • Signed Exact English -test directions and test content 	<ul style="list-style-type: none"> • Sign Language - test content • Sign Language – student responses
English Learners	Used for accountability and college admission	Used for accountability purposes only
	<ul style="list-style-type: none"> • Written Directions in Spanish, Arabic, Portuguese, Polish, Mandarin and Haitian-Creole • Native Language Reader – test directions only 	<ul style="list-style-type: none"> • Time Extension • Bilingual Dictionary Word-to-Word Translation