

# Connecticut State Department of Education



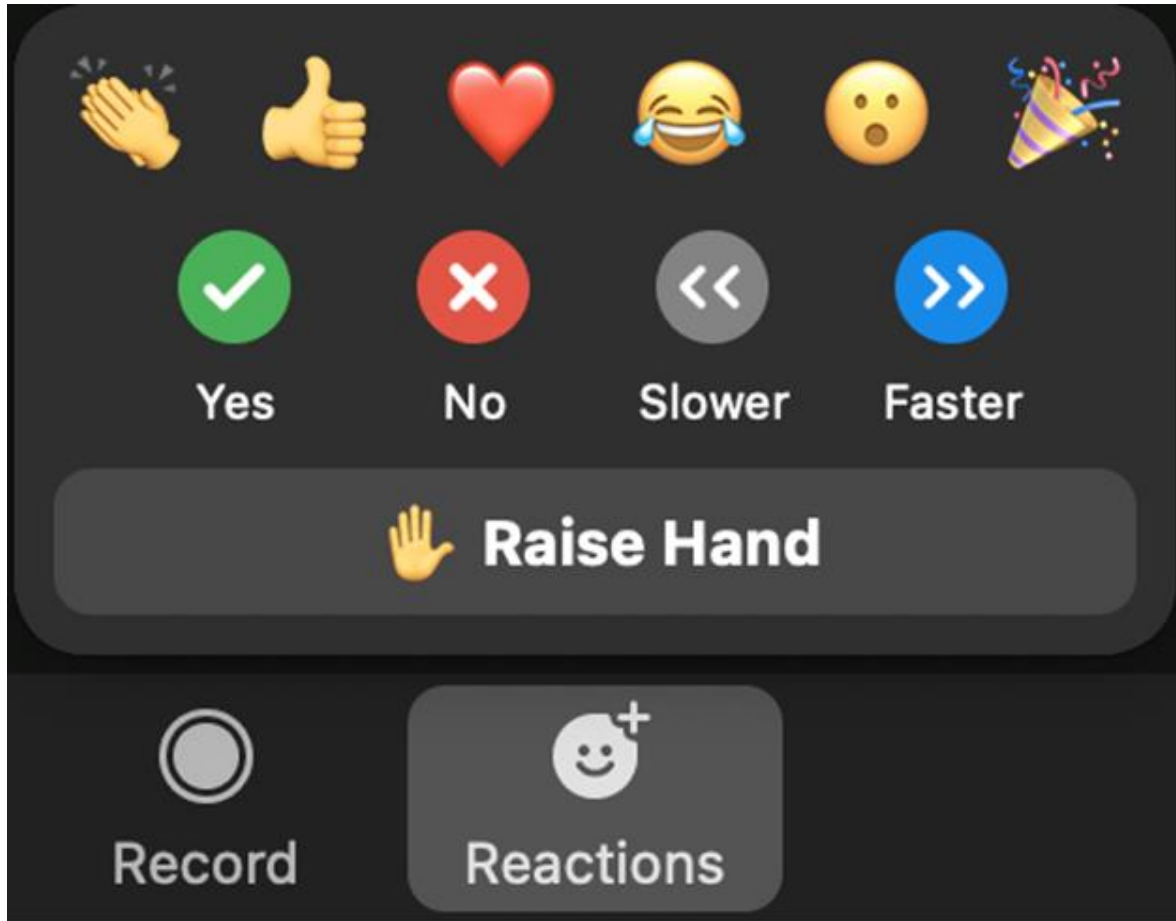
**Charlene Russell-Tucker, Commissioner**

**Commissioner's Roundtable on Family and Community  
Engagement**

**October 19, 2022 – 1:00 PM**



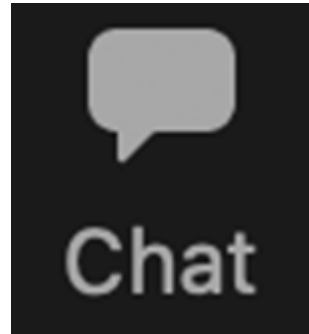
# Interacting With Our Zoom Meeting



Use **reactions** to share your feelings with the speaker and other audience members.

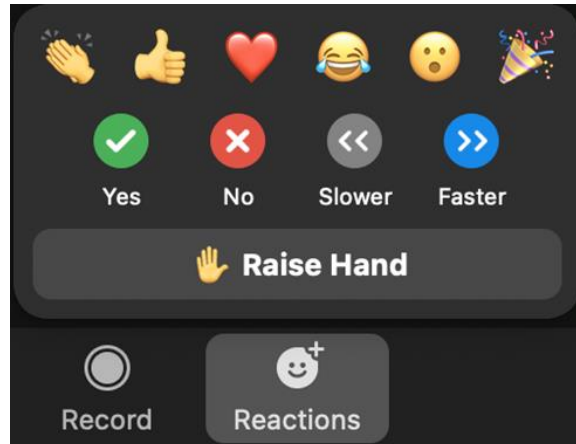


# Interacting With Our Zoom Meeting



To ask a question of our panelists:

Open the Chat panel and type in your question.



If you'd like a chance to unmute your microphone and ask a question:

1. Click the **Reactions** icon, and then
2. Click the **Raise Hand** button.

When you're called on by the facilitator, you'll be able to unmute your microphone.



# Purpose



The Roundtable's purpose is to [advise the Commissioner of Education](#) regarding policy and programmatic priorities to improve outcomes for all students and advance the State Board of Education's comprehensive plan for equity and excellence in Connecticut schools.



# Meeting Ground Rules



## **As members of the Commissioner’s Roundtable for Family and Community Engagement in Education, we have agreed to:**

- Be willing to speak our truth (even the hard truth) while respectfully acknowledging and embracing other views
- W.A.I.T. (Why Am I Talking?)
- Be open to honest and real conversation that is fearless (“Say what you want, not what you think others want to hear”)
- Be active listeners
- Listen respectfully to understand others’ opinions
- Ensure that all voices are valid and respected, making it critical that we hear from everyone in the room
- E.L.M.O (Enough Let’s Move On)



# Agenda



## **Welcome and Introductions**

- Judy Carson, Education Consultant
- Chlo-Anne Bobrowski, Education Manager

## **Emergent Critical Issues in Education**

- Charlene Russell-Tucker, Commissioner

## **The New EdSight: Data, Transparency, and Accountability**

- Ajit Gopalakrishnan, Chief Performance Officer

## **Listening to Roundtable Members: Strategies for Sharing Information with Families and Community Members**

## **Discussion Wrap-up and Charge to the Roundtable from Commissioner Russell-Tucker**



# Emergent Issues in Education



# The Sky is NOT the Limit

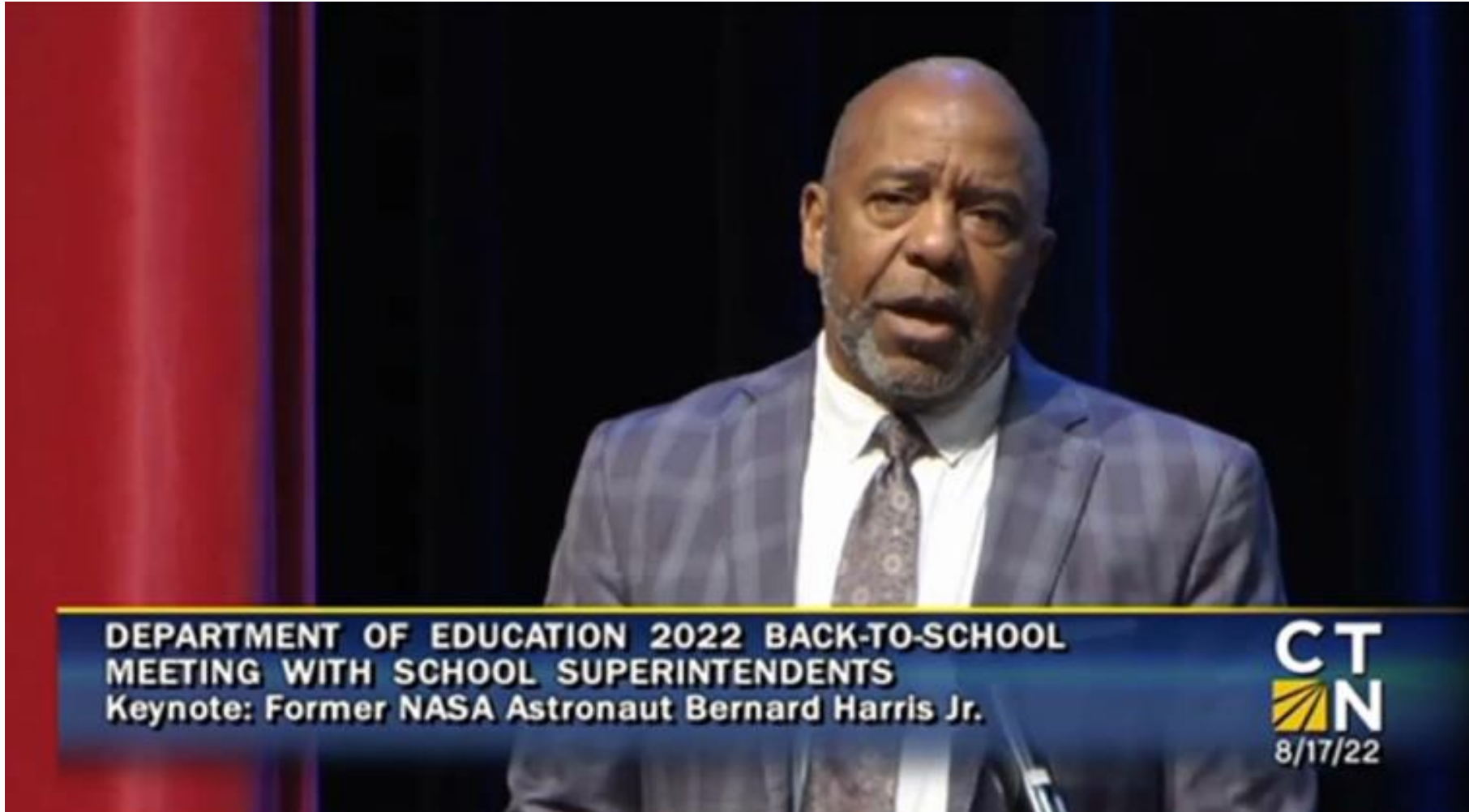


With the Connecticut State Department of Education, our State Board of Education, Superintendents and school leaders, local school boards, policymakers, educational partners, parents/guardians (families), community members, and Connecticut's talented educator workforce working together on student's behalf, The Sky Is NOT The Limit!





# The Sky is NOT the Limit - Dr. Bernard Harris Video





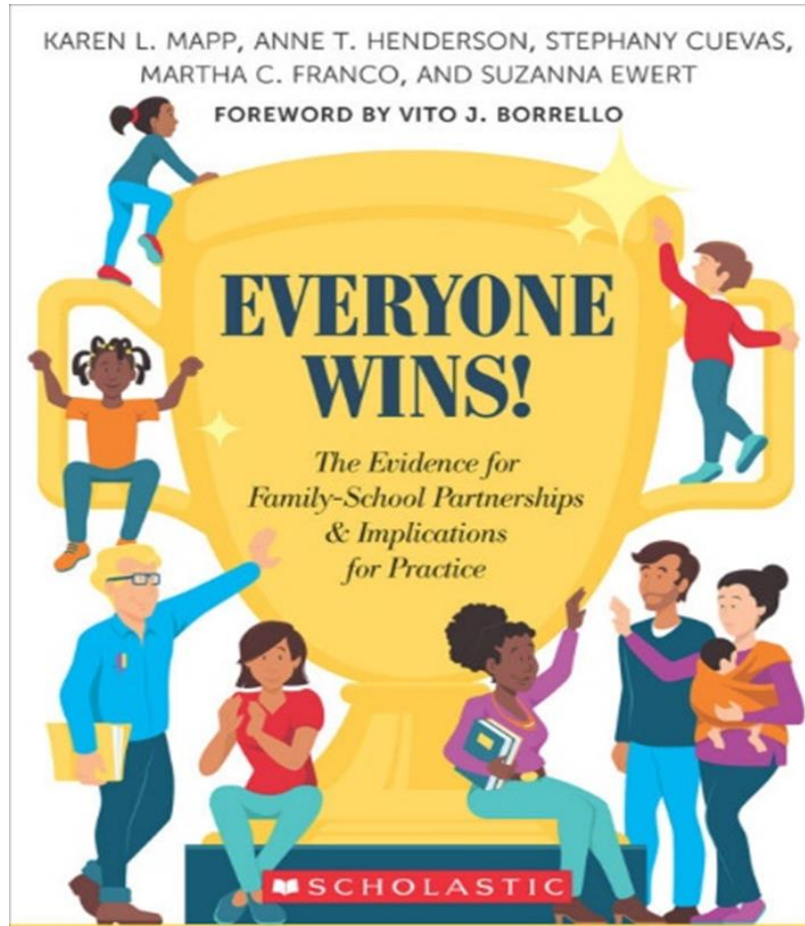
# 2022-23 CSDE's Focused Initiatives



- Promoting What's Right in Education in Connecticut
- Supporting the Social, Emotional, Physical and Mental Health of Students and Staff
- Launching into Healthy Learning
- Providing Access to High Quality Curricula
- Supporting our Educators
- Supporting our Students
- Enhanced Commitment to Literacy



# New Publication Recognizes CT Family Engagement Definition



## How Do We Define “Family Engagement”?

There are many definitions of family engagement, but little consistency in the field about what it means. We use this definition:

**A full, equal, and equitable partnership among families, educators, and community partners to promote children’s learning and development, from birth through college and career.**

Co-developed with the Commissioner’s Roundtable on Family and Community Engagement – made up of parent leaders, educators, policymakers, and community members...(p.16)



# FAFSA Challenge



The Connecticut FAFSA Challenge is designed to **spark and support local innovations** to:



Increase FAFSA completion rates

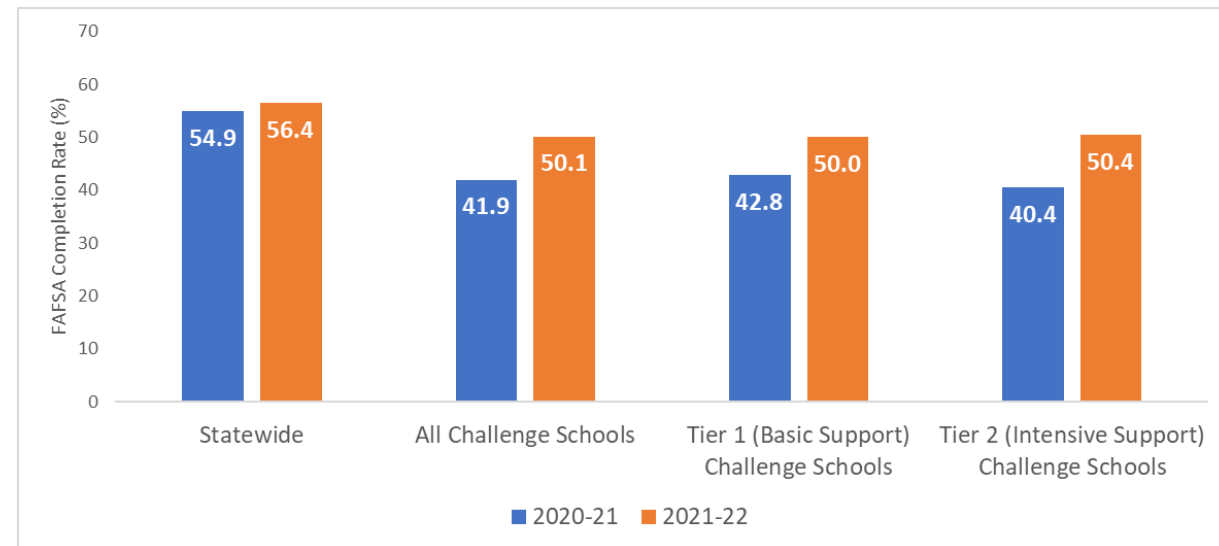


Improve postsecondary access



Close opportunity gaps

## 2021-2022 Results





# FAFSA Challenge



## 2021-22 Connecticut FAFSA Challenge Winners



### Governor's Award for Growth:

- Bridgeport Military Academy, Bridgeport
- Bassick High School, Bridgeport
- Bristol Eastern High School, Bristol

### Commissioner's Award for Overall FAFSA Completion:

- Ansonia High School, Ansonia
- Torrington High School, Torrington
- Enfield High School, Enfield





# Student Assessment Results



- Performance has not returned to pre-pandemic levels, academic growth results offer some encouraging signs of learning acceleration
- Grades 4 and 5 may be 2-3 months behind their expected performance.
- In the middle school grades students may be 5-7 months behind in ELA, and a year or more behind in math.



# Blue Ribbon Schools



- Booth Hill School in Trumbull
- E.O. Smith High School in Regional School District 19 (Ashford, Columbia, Coventry Eastford, Mansfield, Willington, and Windham);
- Great Plain School in Danbury
- Whiting Lane School in West Hartford



# Special Education Employment System



- The CSEES is an easy-to-use resource with the goal of developing short term staffing solutions while building long-term pipelines of qualified talent available for employment within Connecticut.
- Schools and districts will populate the system by posting job vacancies based upon their current individualized needs.





# Teacher and Paraeducator of the Year



**Teacher of the Year**  
**Carolyn Kielma**  
**Science Teacher**  
**Bristol Eastern High School**  
**Bristol, Connecticut**



**Paraeducator of the Year**  
**Don Askew**  
**Maloney High School**  
**Meriden, Connecticut**





# The New EdSight

Data, Transparency, and  
Accountability

Chief Performance Officer  
Ajit Gopalakrishnan



# EdSight Reports

