




CONNECTICUT STATE
DEPARTMENT OF EDUCATION

CONNECTICUT STATE DEPARTMENT OF EDUCATION

Talk Tuesdays

Student Attendance, Engagement, and Support Series

 Please sign-in using the chat - include your name, title, district/school or agency. 

Connecticut State Department of Education
January 26, 2021

Agenda

1. Welcome

Kari Sullivan Custer, Attendance & Engagement Consultant, CSDE

2. What's New at CSDE

3. School Climate: Impact on Attendance 

Amanda Pickett, Education Consultant

Connecticut State Department of Education

4. Participant Input & Feedback

5. Upcoming Attendance & Engagement Meetings



LATEST RESOURCES



What's New at CSDE

January 25, 2021

- [Coronavirus Relief Funds Timeline](#) ★
- [CT's Colleges and Universities Teaming to Help Students Navigate FAFSA Process, Applications](#)

January 21, 2021

- ★ [6 Ways the CSDE is Working to Keep Schools Open Safely](#)
- [CSDE podcast: The Borrowed Classroom - Episode 1: Teaching Concurrent Learners](#)
- [Companion document: Teaching Concurrent Learners Checklist](#)

January 19, 2021

- [DPH vaccination update](#)
- [Pandemic-Related Transitions: P-3 Contexts](#)
- ★ [Information for Parents and Guardians of English Learners](#) (flyers in multiple languages)
- [CT Learning Hub - High quality resources for ALL learners and families available anytime, anywhere](#) (flyer available in Spanish)
- [SDE-DPH vaccine communication letter](#)





Announcing New Attendance & Engagement Supports


Attendance and Engagement 2nd Community of Practice

Date: Wednesday, **February 17, 2021**
10 to 11:30 a.m.

Topic: **Data-informed Strategies for Multi-lingual Learners**
Gladys Labas, CSDE Equity Director
Megan Alubicki Flick, Education Consultant
Amanda Pickett, Education Consultant


Schedule: January 20, 2021; February 17, 2021; March 17, 2021, and May 5, 2021


Audience: All districts

Registration: Invitations will be sent through the new Attendance and Engagement Contact list in Contacts Manager. 

Attendance and Engagement Contact List

WHAT: Newest list of contacts in the [CSDE Contacts Manager](#). Each district has a “Contacts Manager Writer.”

WHO: District-level person responsible for addressing issues related to chronic absence, attendance, and engagement. 

PURPOSE: To inform districts on new guidance, research, promising practices, and events targeted specifically for district attendance leads. 

HOW: Contacts Manager Writer should:

- Log in at <http://csde.ct.gov>
- Select Contacts Manager
- Navigate to the Attendance and Engagement Contact section





Friday CAFÉ

Professional Network for Community & Family Engagement

Do you work at the intersection of families and learning?
Would you like to network and learn from others in the field?



Friday CAFÉ

Professional Network for Community and Family Engagement

Register Now for January 29

Time to Start Planning for Transition to Kindergarten How Can We Help Every Child Get A Strong Start?

Going into kindergarten is an important and exciting milestone that young children and families will face in September. Along with the excitement, there are often questions about starting school and being ready. COVID presents even more questions for families. It is the partnerships among families, schools, and the community that create the bridges for a smooth transition. It is not too early to start talking with families and building those relationships.



Please join the Friday CAFÉ community to discuss strategies for partnering with families during the transition to kindergarten and get your questions answered. You'll also learn about new, FREE resources in CT to help families support young children's development at home.

Conversation Catalysts:

Andrea Brinnel, CT State Department of Education
Abby Alter, [Child Health and Development Institute](#)
Amanda Heath, [211 Child Development, United Way of Connecticut](#)
Julia Levy, [Sparkler](#)

Date: January 29, 10:00-11:30

Location: Virtual via Zoom

[**//REGISTER HERE//**](#)

Save These Dates for Upcoming Friday CAFÉ Mornings

Friday CAFE Morning Sessions 2021

March 26, April 23, May 21, 2021

All sessions are from 10:00-11:30 a.m. online





CONNECTICUT STATE
DEPARTMENT OF EDUCATION

CONNECTICUT STATE DEPARTMENT OF EDUCATION

School Climate: Impact on Attendance



Routines

Stop & Jot

Confirmations	Areas for Exploration



Routines

Kahoot

A dark blue horizontal banner containing white text and a game PIN input field. The text on the left says "Join at **www.kahoot.it** or with the **Kahoot! app**". To the right is a white rectangular box with a small tab on top that says "Game PIN:".

Join at **www.kahoot.it**
or with the **Kahoot! app**

Game PIN:



Content Acknowledgments

- System Change
 - National Implementation Research Network - The Hexagon Tool:
<https://nirn.fpg.unc.edu/resources/hexagon-exploration-tool>
- School Climate
 - National Center on Safe Supportive Learning Environments: <https://safesupportivelearning.ed.gov>
 - Futures Without Violence:
<https://www.futureswithoutviolence.org/the-whole-school-approach/>

Learning Targets

- Understand the connection of School Climate and Attendance
- Become familiar with a comprehensive approach to positive school climate
- Evaluate Tier 1 Practices, and Alignment with Attendance Goals
- Share resource to support the work



What is School Climate?

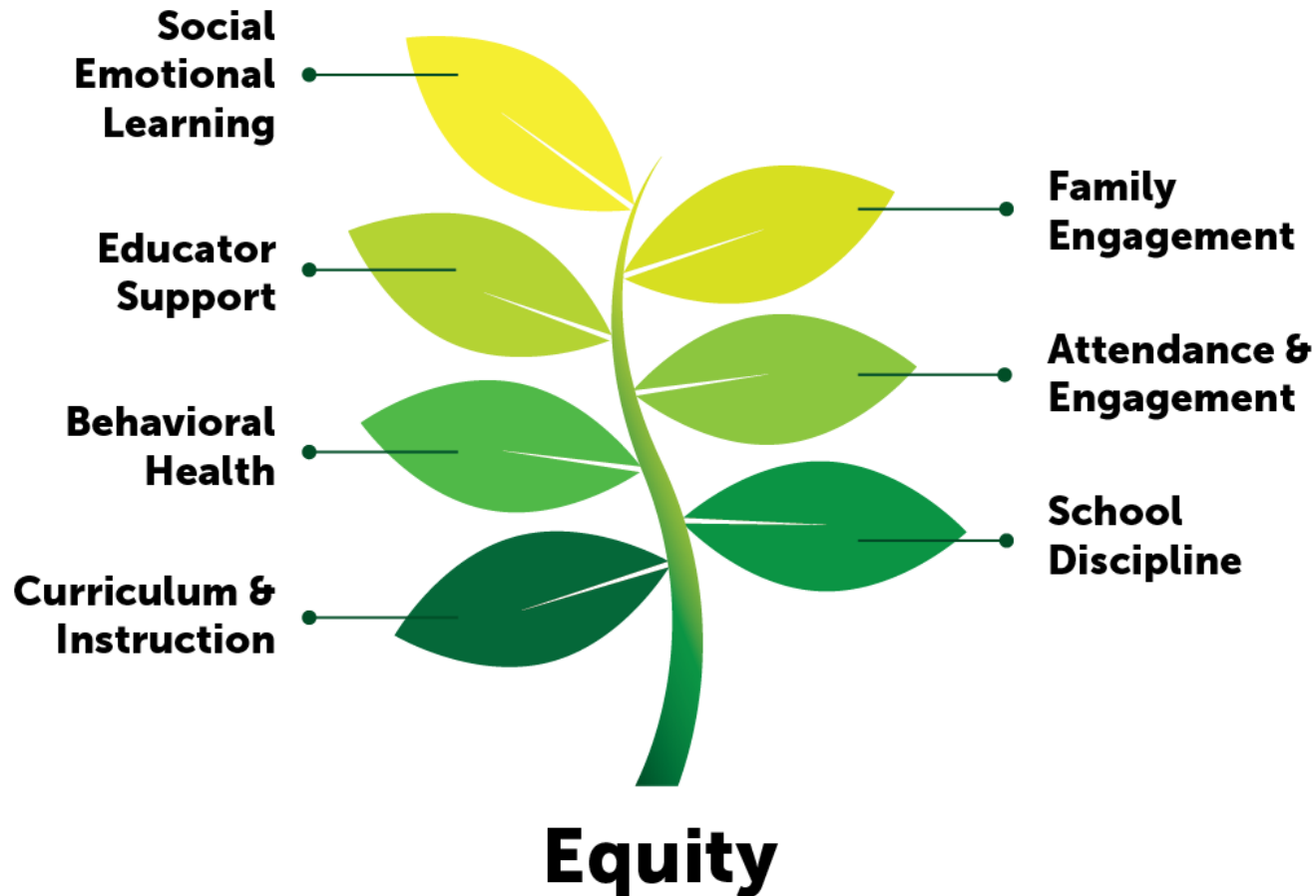
- The quality and character of school life with a particular focus on the quality of the relationships within the school community between and among students and adults.



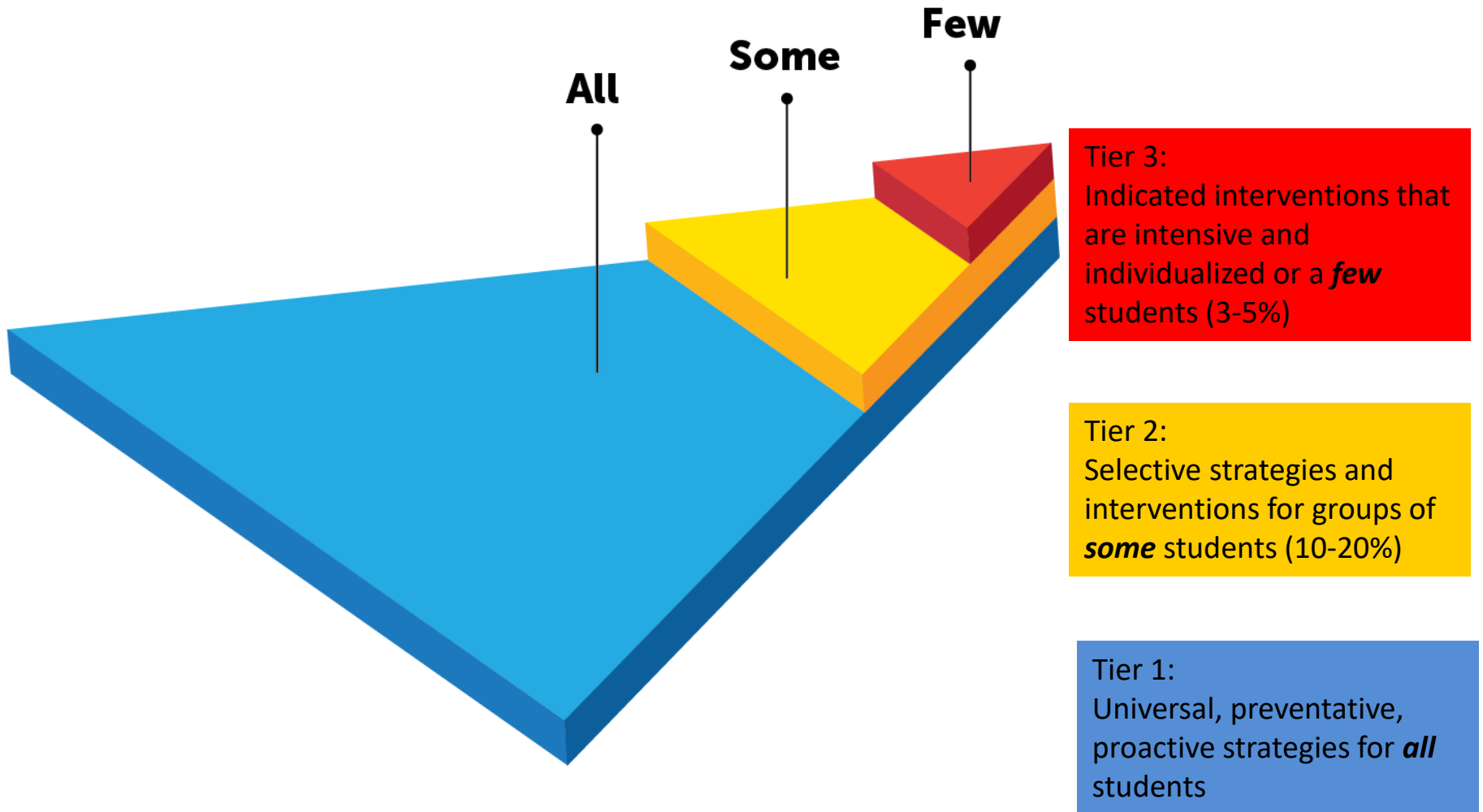
Effects of a Positive Climate

- Student academic success
- Better attendance and graduation rates
- Increased self esteem
- School connectedness and relationships
- Decrease in bullying, problem and risky behaviors

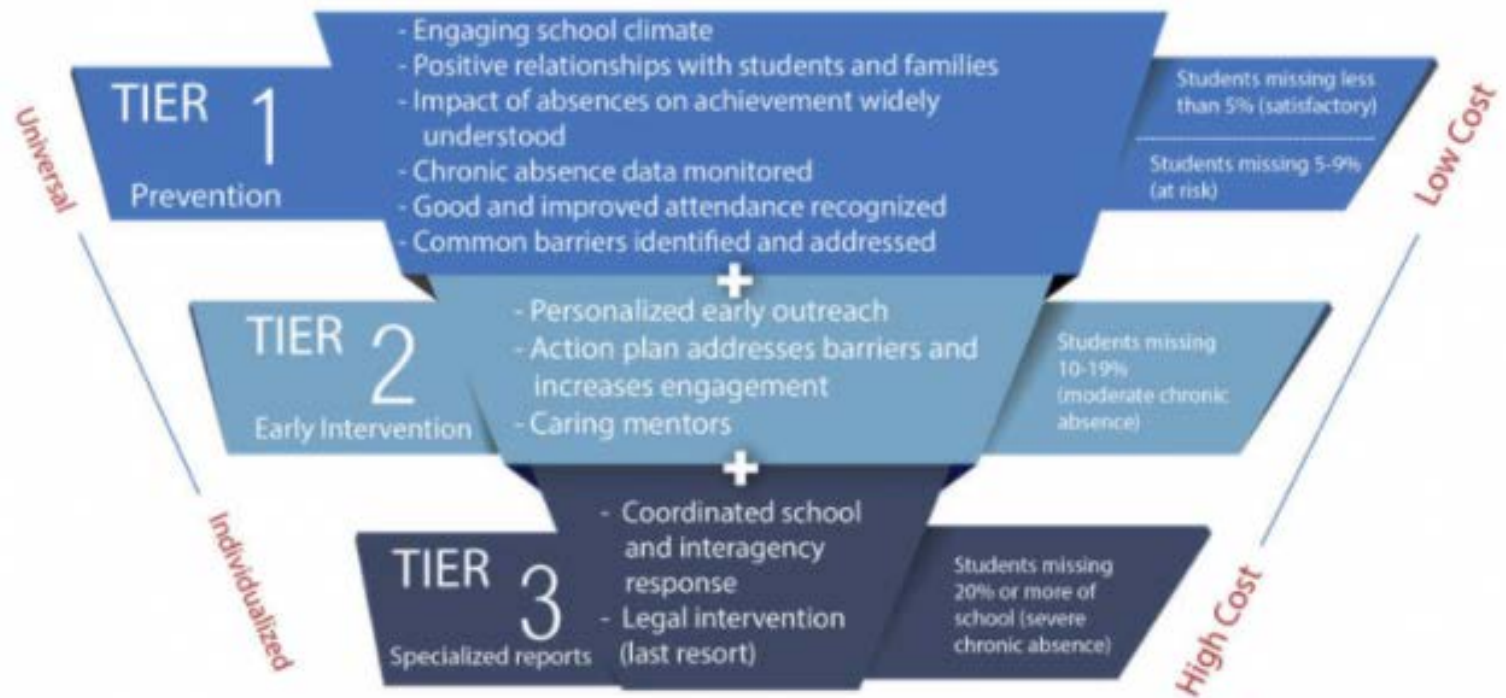
Positive School Climate: Integrated Approach for Wellness



Continuum of Support

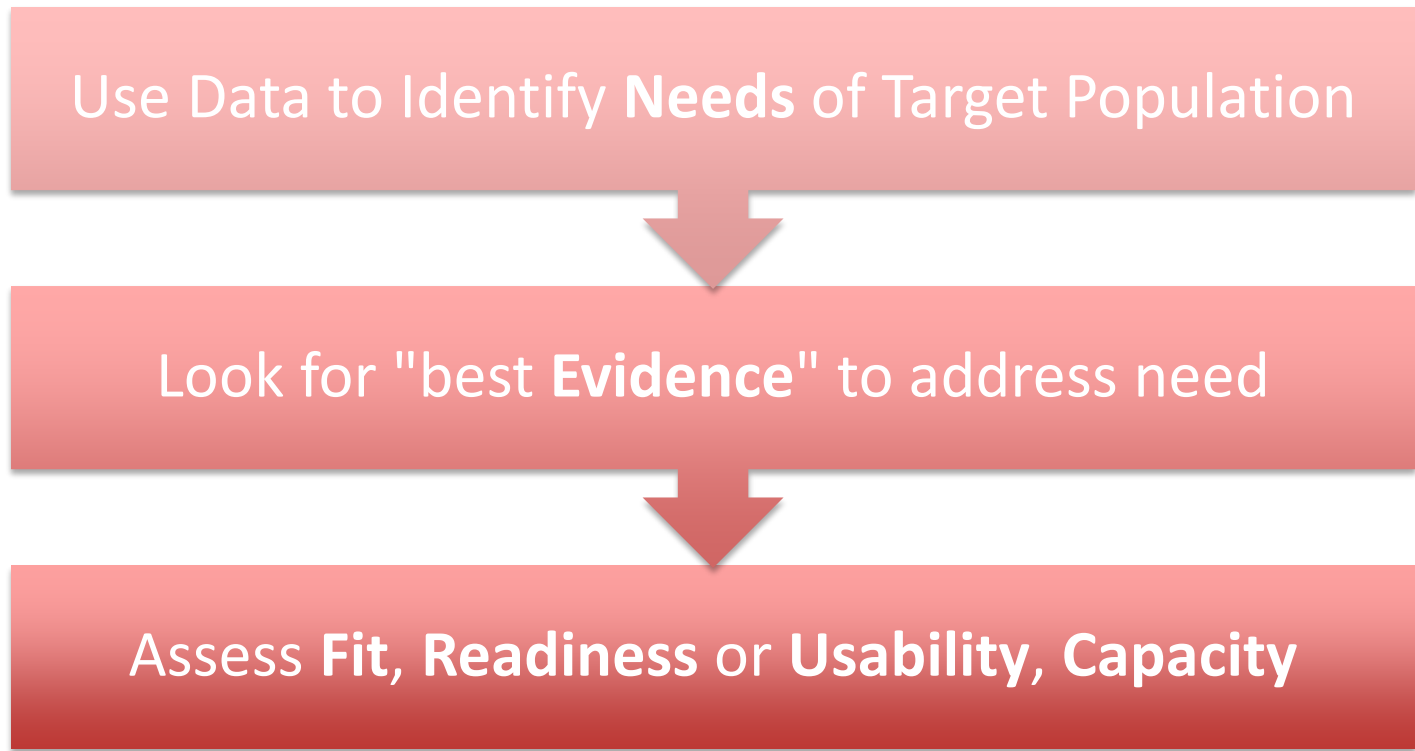


Attendance Works Tiered Model



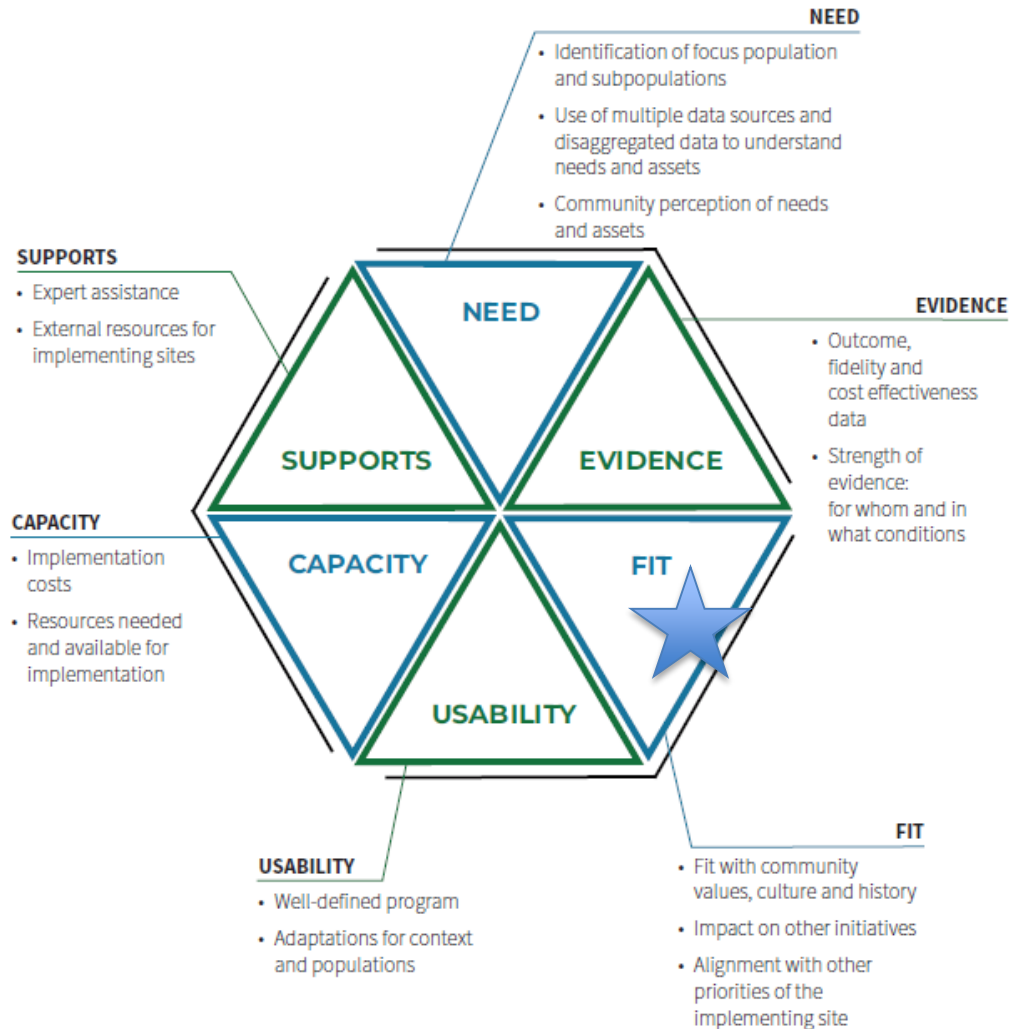


Innovation or EBP Selection: Ideal Situation



The Hexagon: An Exploration Tool

The Hexagon can be used as a planning tool to guide selection and assess the fit and feasibility of potential programs and practices for use. It includes three **program indicators** and three **implementing site** indicators.





Initiative Inventory

Initiative Inventory
Understanding the Implementation Landscape

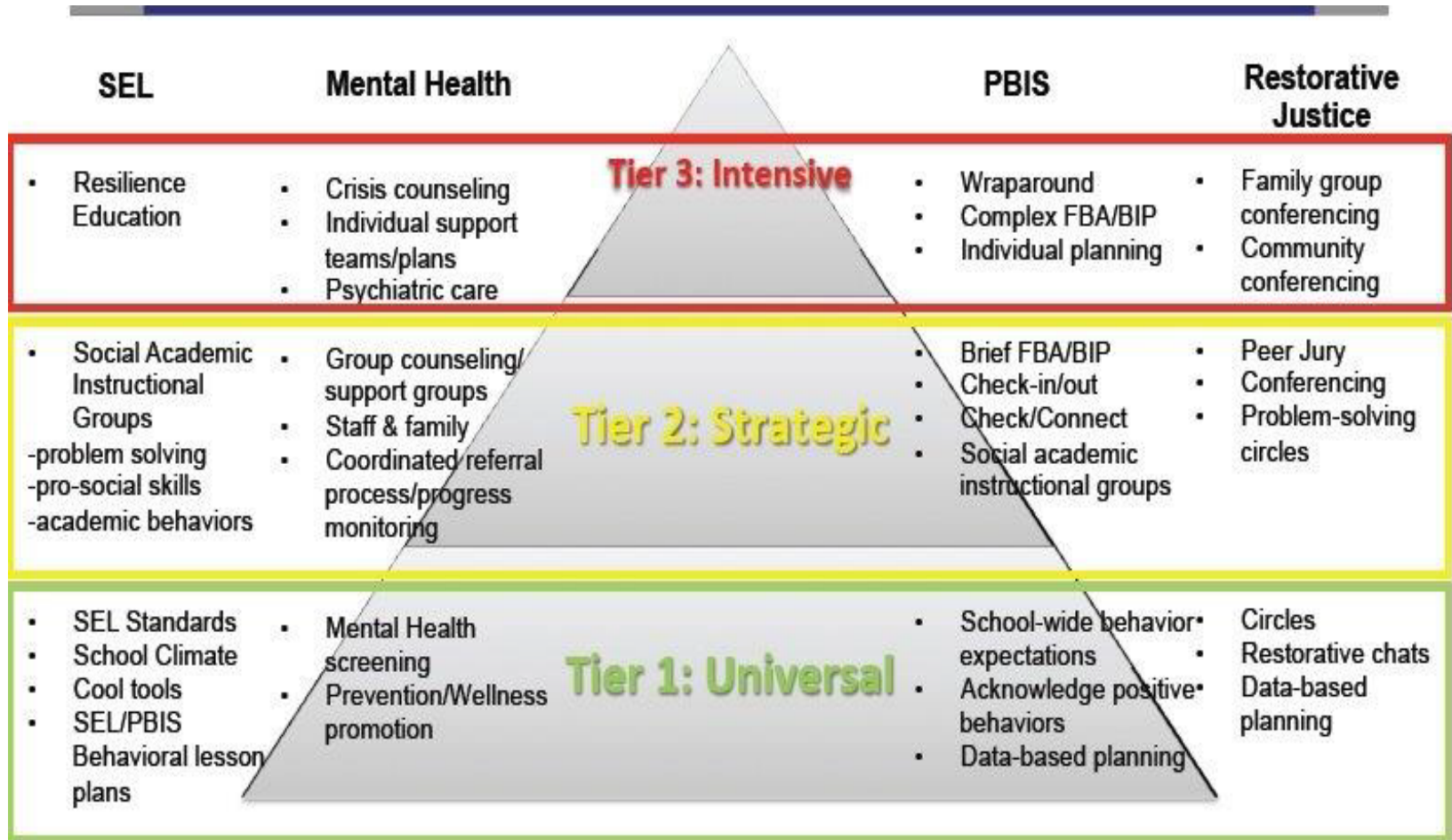


Relation to Attendance Goals/priorities

Team Members: _____

Date: _____

Name of Initiative	Leadership of Initiative (Team and/or Coordinator Name(s) and Department)	Expected Outcome	Target population	Start and End Date	Financial Commitment and Source of Funding (federal, state, grant, or other)	Relation to Organization Priorities & Strategic Plan	Evidence of Outcomes What has happened thus far?





Stop & Jot

Confirmations	Areas for Exploration

School Climate Resources

- [Connecticut State Department of Education Evidence-Based Practice Guide: Climate and Culture](#)
- [CT State Board of Education Position Statement on Creating a Healthy Learning Environment that is Physically, Emotionally and Intellectually Safe](#)
- [School Climate Strategy Resource Guide](#)

Contact

Amanda Pickett, MSW

Associate Education Consultant

Connecticut State Department of Education

Office of Student Supports and Organizational
Effectiveness

amanda.pickett@ct.gov

PARTICIPANT INPUT



Upcoming Attendance & Engagement Meetings

Talk Tuesday

Tuesday, **February 9**, 2021

Attendance & Multi-lingual Learners

Gladys Labas

CSDE Equity Director

Megan Alubicki Flick

CSDE English Learner Consultant

Community of Practice

Wednesday, **February 17**, 2021

Data-informed Strategies for Multi-lingual Learners

Gladys Labas

CSDE Equity Director

Megan Alubicki Flick

CSDE English Learner Consultant

Amanda Pickett

CSDE Education Consultant

Save the Dates (CoP):

- Wednesday, March 17, 2021
- Wednesday, May 5, 2021



Keep in touch!



**Kari
Sullivan Custer**

Kari.Sullivan@ct.gov

860-807-2041

Connect with CSDE for more information
on student attendance and engagement:



[Facebook.com/ctdepartmentofeducation](https://www.facebook.com/ctdepartmentofeducation)



<http://www.ct.gov/sde>



[@EducateCT](https://twitter.com/EducateCT)

